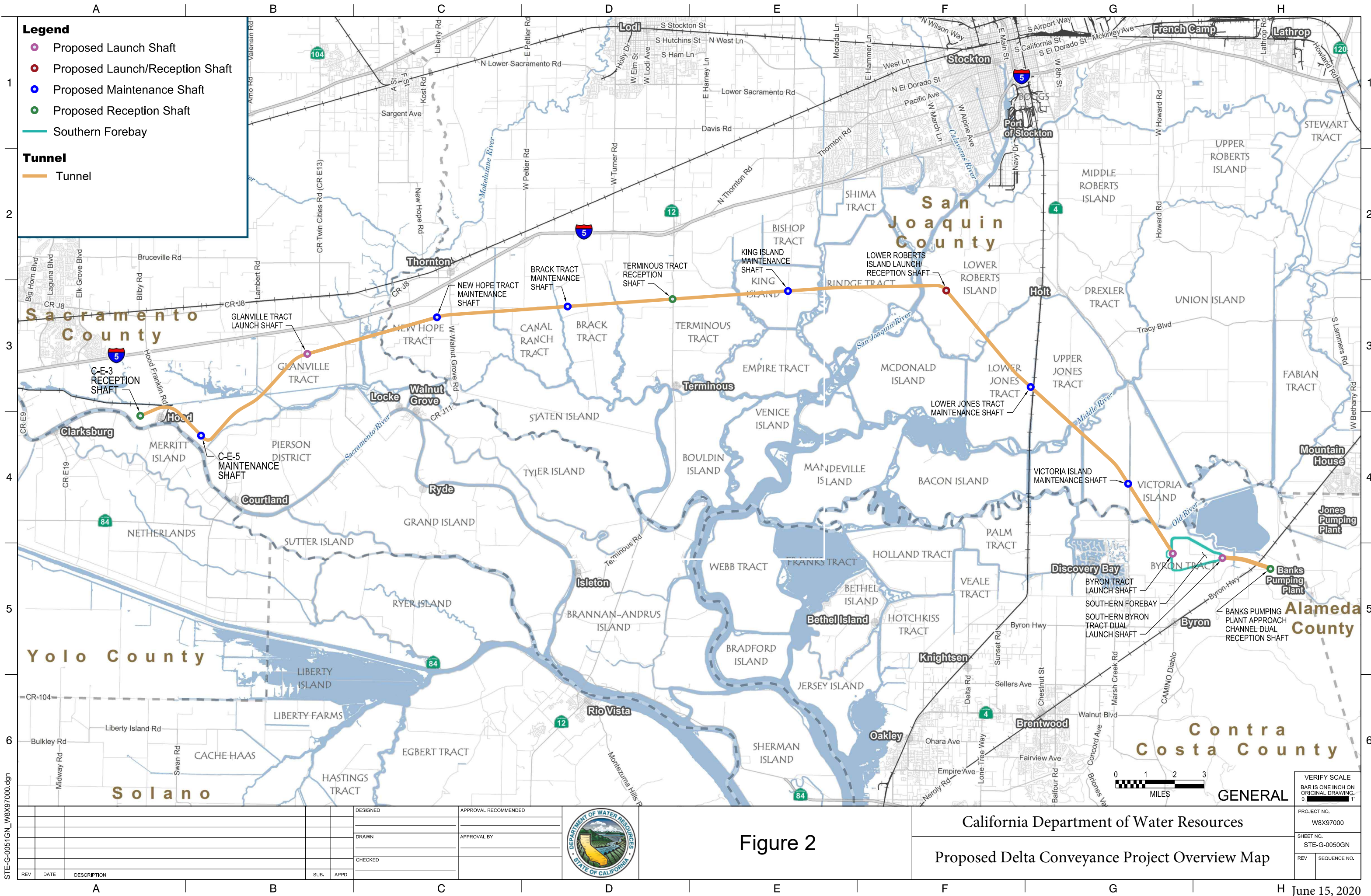


**Figure 1. Proposed Project Facility Corridor Options**





STE-G-0051GN\_W8X97000.dgn

REV	DATE	DESCRIPTION	SUB.	APPD

DESIGNED	APPROVAL RECOMMENDED
DRAWN	APPROVAL BY
CHECKED	

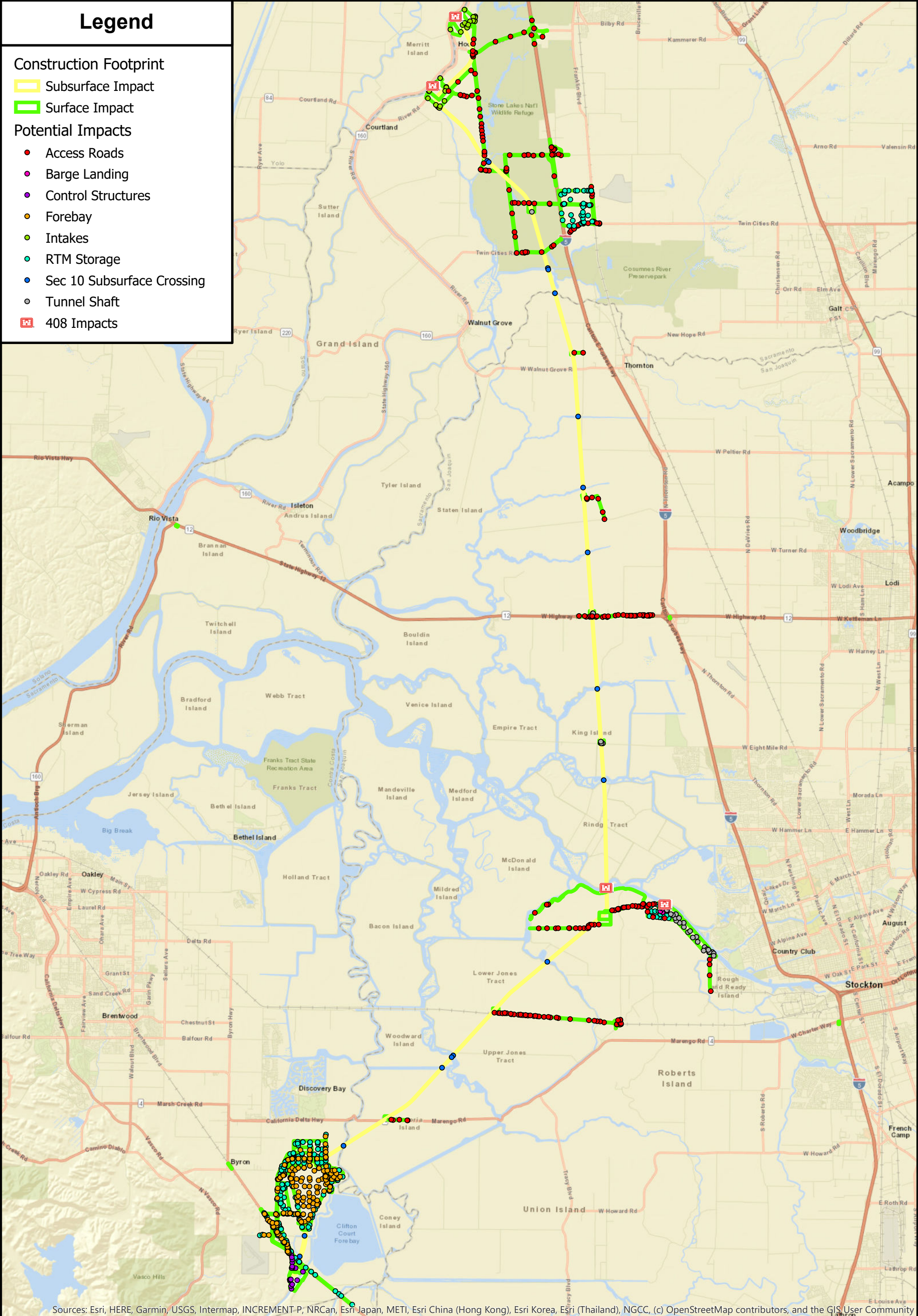


Figure 2

California Department of Water Resources		PROJECT NO. W8X97000
Proposed Delta Conveyance Project Overview Map		SHEET NO. STE-G-0050GN
REV	SEQUENCE NO.	

VERIFICATION SCALE BAR IS ONE INCH ON ORIGINAL DRAWING. 0 1 2 3 MILES	
GENERAL	
June 15, 2020	





Sources: Esri, HERE, Garmin, USGS, Intermap, INCREMENT P, NRCan, Esri Japan, METI, Esri China (Hong Kong), Esri Korea, Esri (Thailand), NGCC, (c) OpenStreetMap contributors, and the GIS User Community



Delta Conveyance Project  
SPK-2019-00899

Figure 3. Potential impacts within the jurisdiction of the U.S. Army Corps of Engineers along the proposed Delta Conveyance project

Map produced on June 26, 2020 by  
USACE, Sacramento District  
East Alignment as of May 13, 2020  
Spatial Reference: WGS 1984

0123

Miles

N

W

E

S