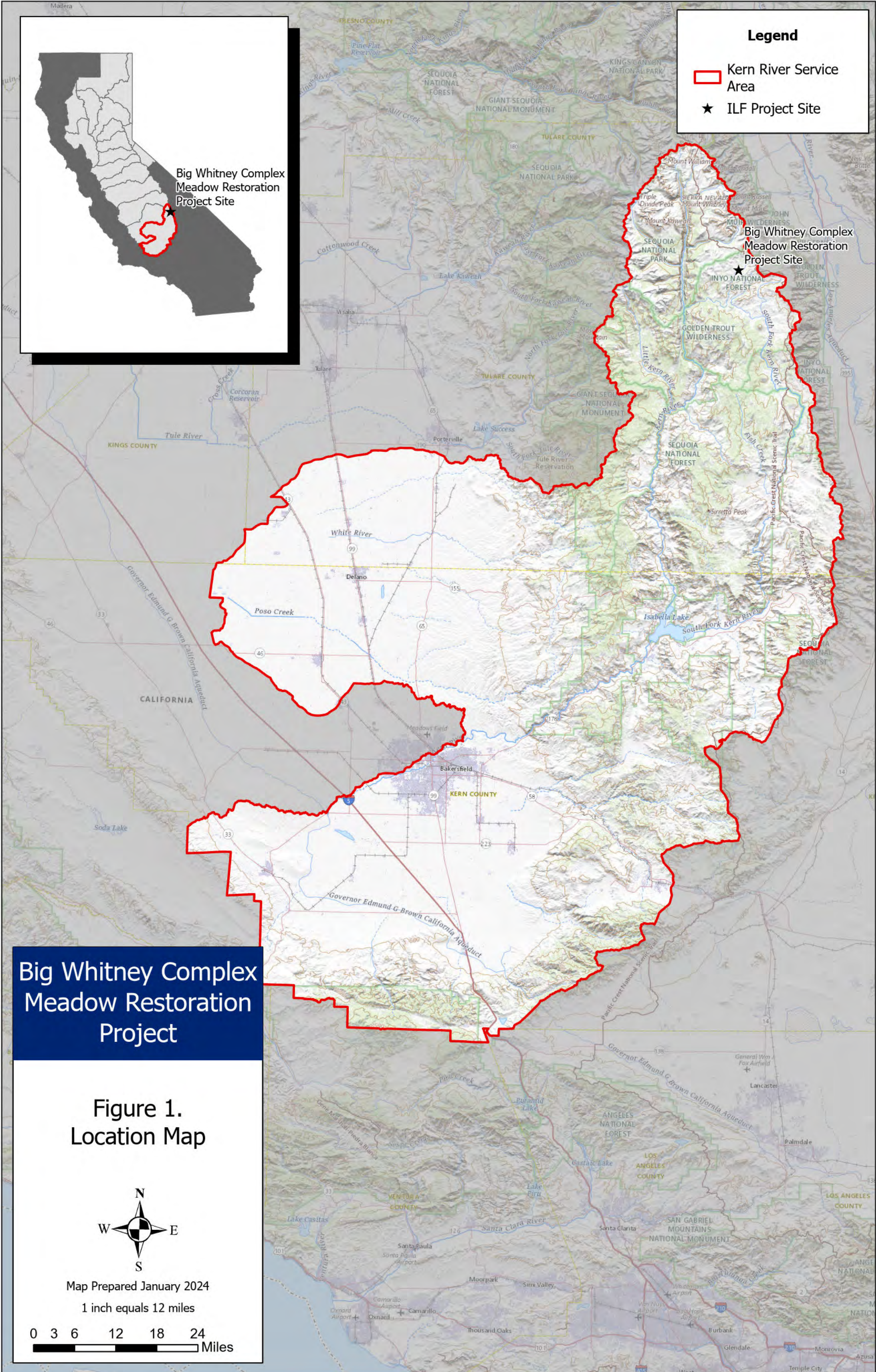


Legend

- Kern River Service Area
- ★ ILF Project Site



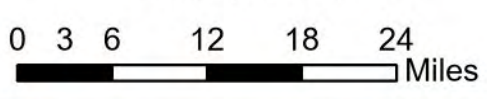
Big Whitney Complex Meadow Restoration Project

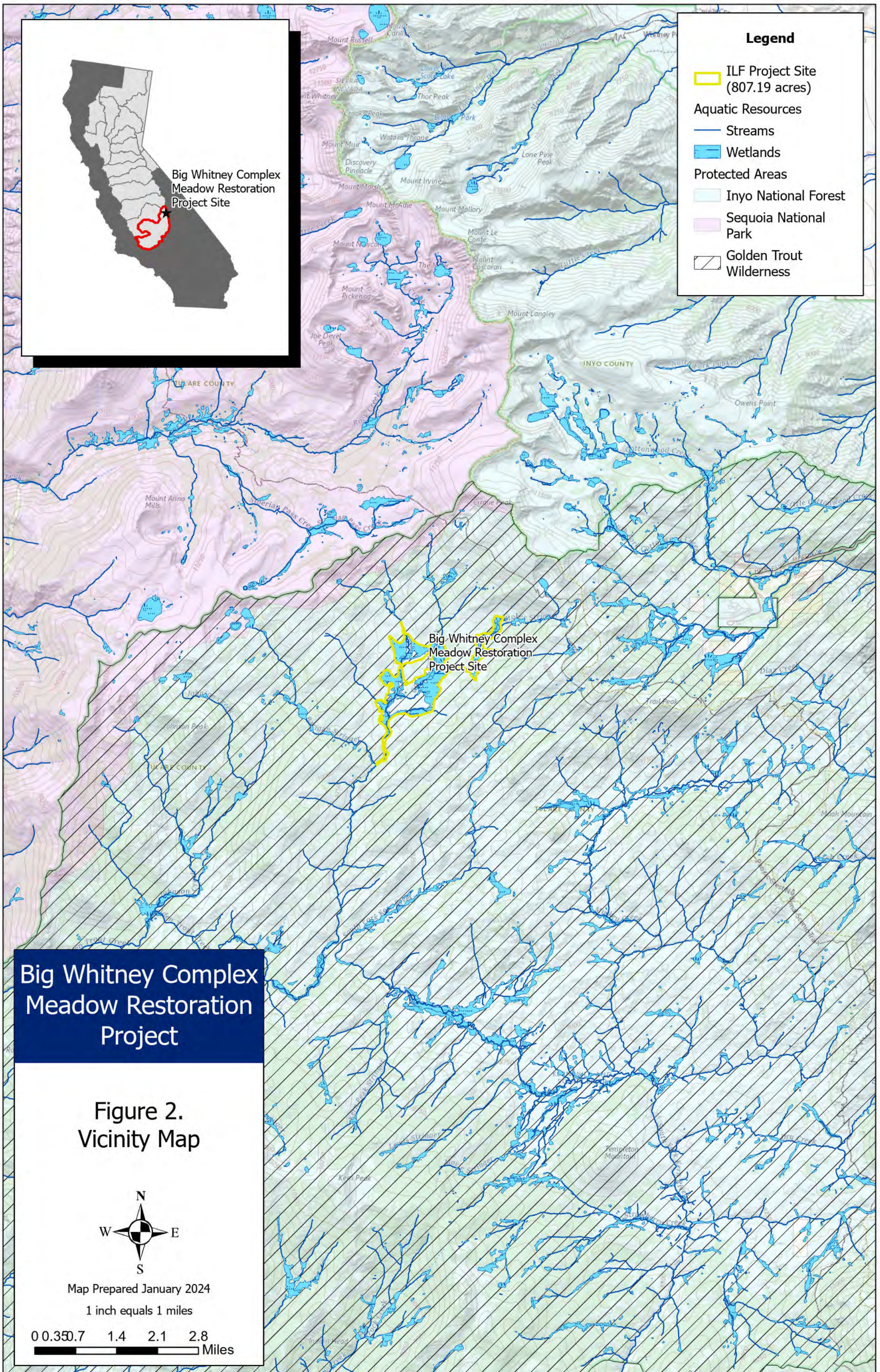
Figure 1. Location Map



Map Prepared January 2024

1 inch equals 12 miles





Legend

- ILF Project Site (807.19 acres)
- Aquatic Resources**
- Streams
- Wetlands
- Protected Areas**
- Inyo National Forest
- Sequoia National Park
- Golden Trout Wilderness

Big Whitney Complex Meadow Restoration Project Site

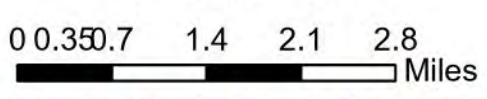
Big Whitney Complex Meadow Restoration Project

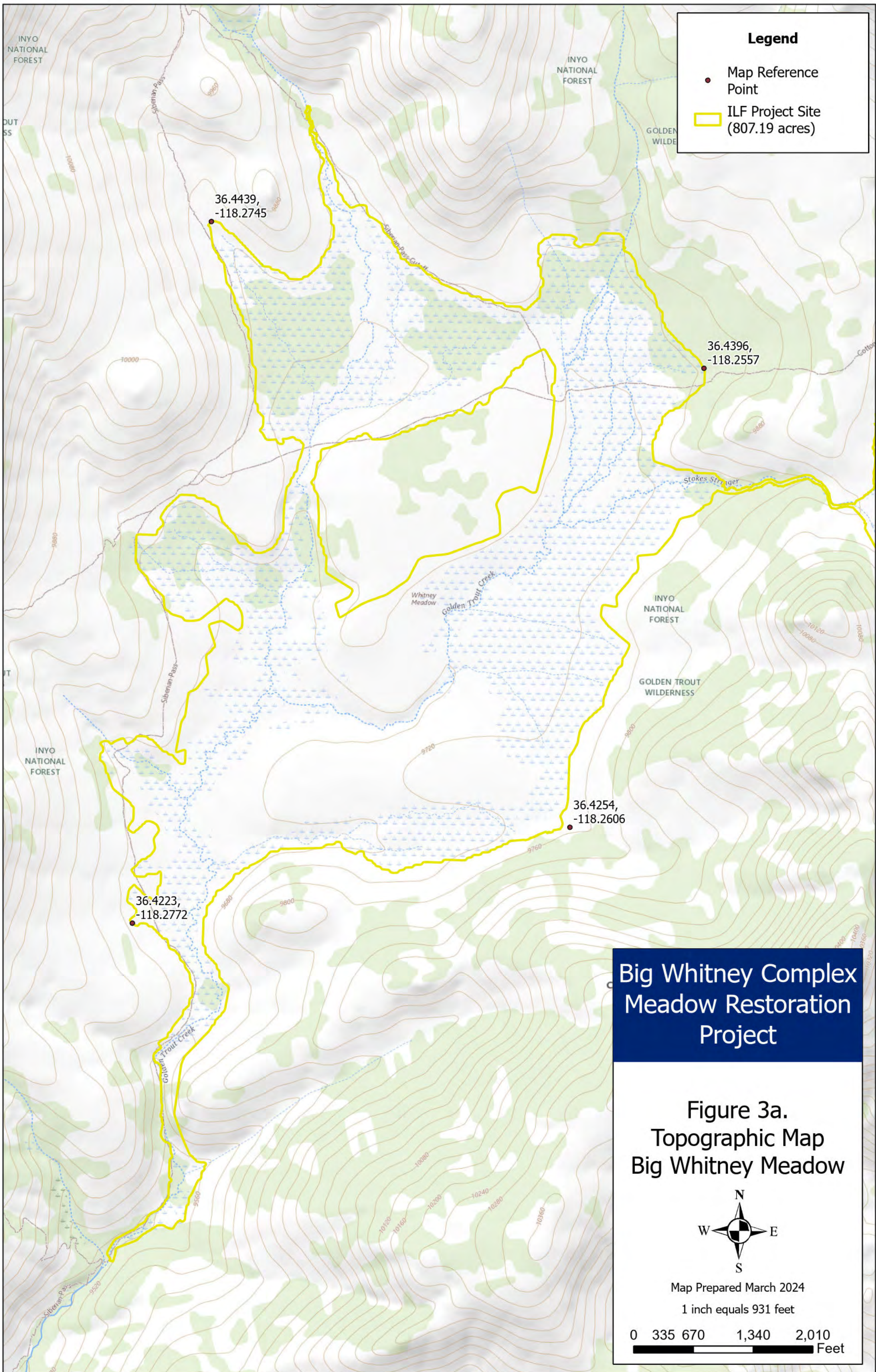
Figure 2. Vicinity Map



Map Prepared January 2024

1 inch equals 1 miles





Legend

- Map Reference Point
- ▭ ILF Project Site (807.19 acres)

Big Whitney Complex Meadow Restoration Project

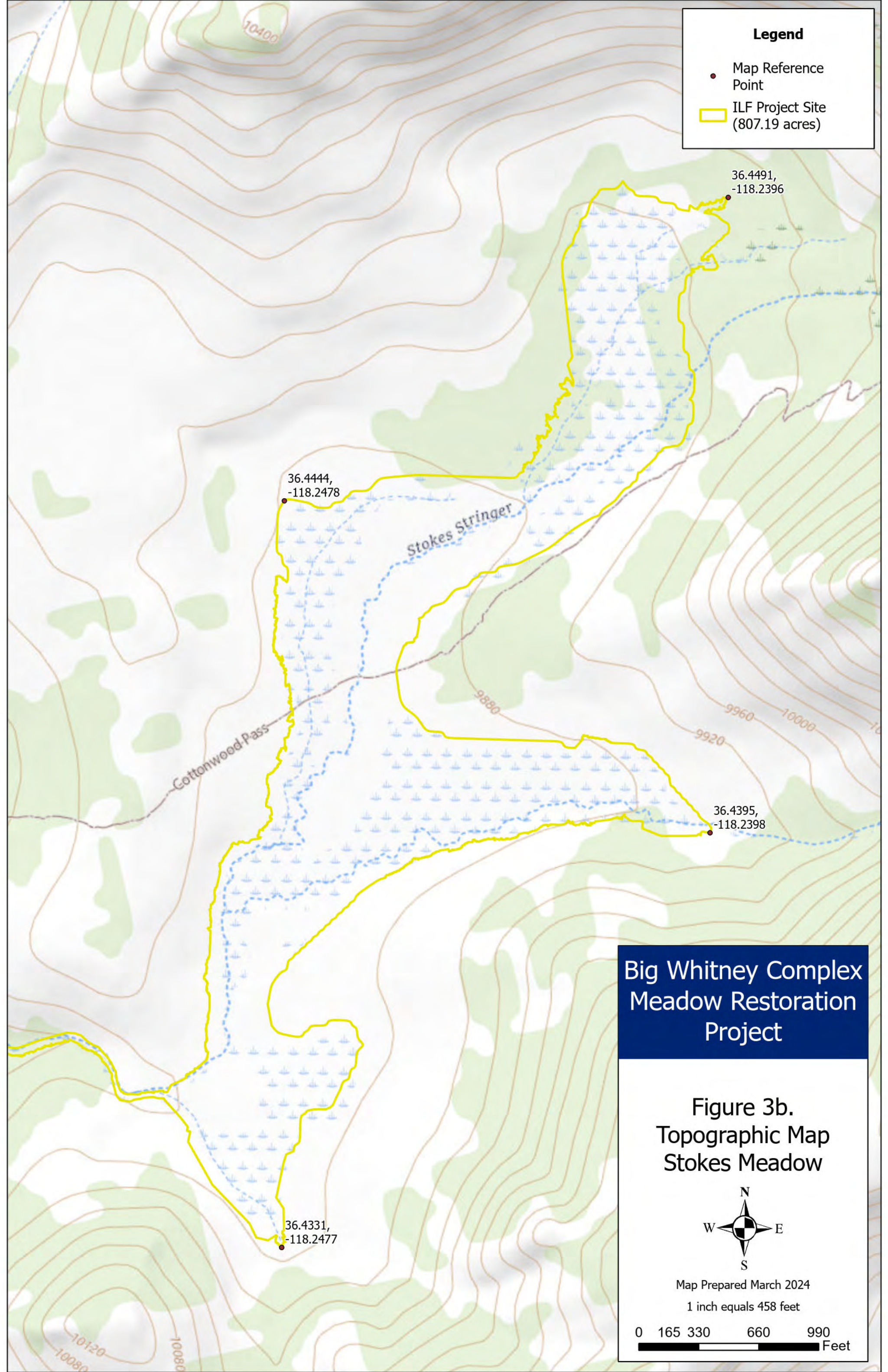
**Figure 3a.
Topographic Map
Big Whitney Meadow**



Map Prepared March 2024

1 inch equals 931 feet

0 335 670 1,340 2,010 Feet



Legend

- Map Reference Point
- ILF Project Site (807.19 acres)

**Big Whitney Complex
Meadow Restoration
Project**

**Figure 3b.
Topographic Map
Stokes Meadow**



Map Prepared March 2024
1 inch equals 458 feet



Legend

- Map Reference Point
- ILF Project Site (807.19 acres)

36.4439,
-118.2745

36.4396,
-118.2557

36.4254,
-118.2606

36.4223,
-118.2772

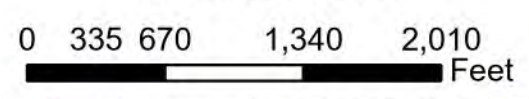
**Big Whitney Complex
Meadow Restoration
Project**

**Figure 4a.
Color Aerial Photo
Big Whitney Meadow**



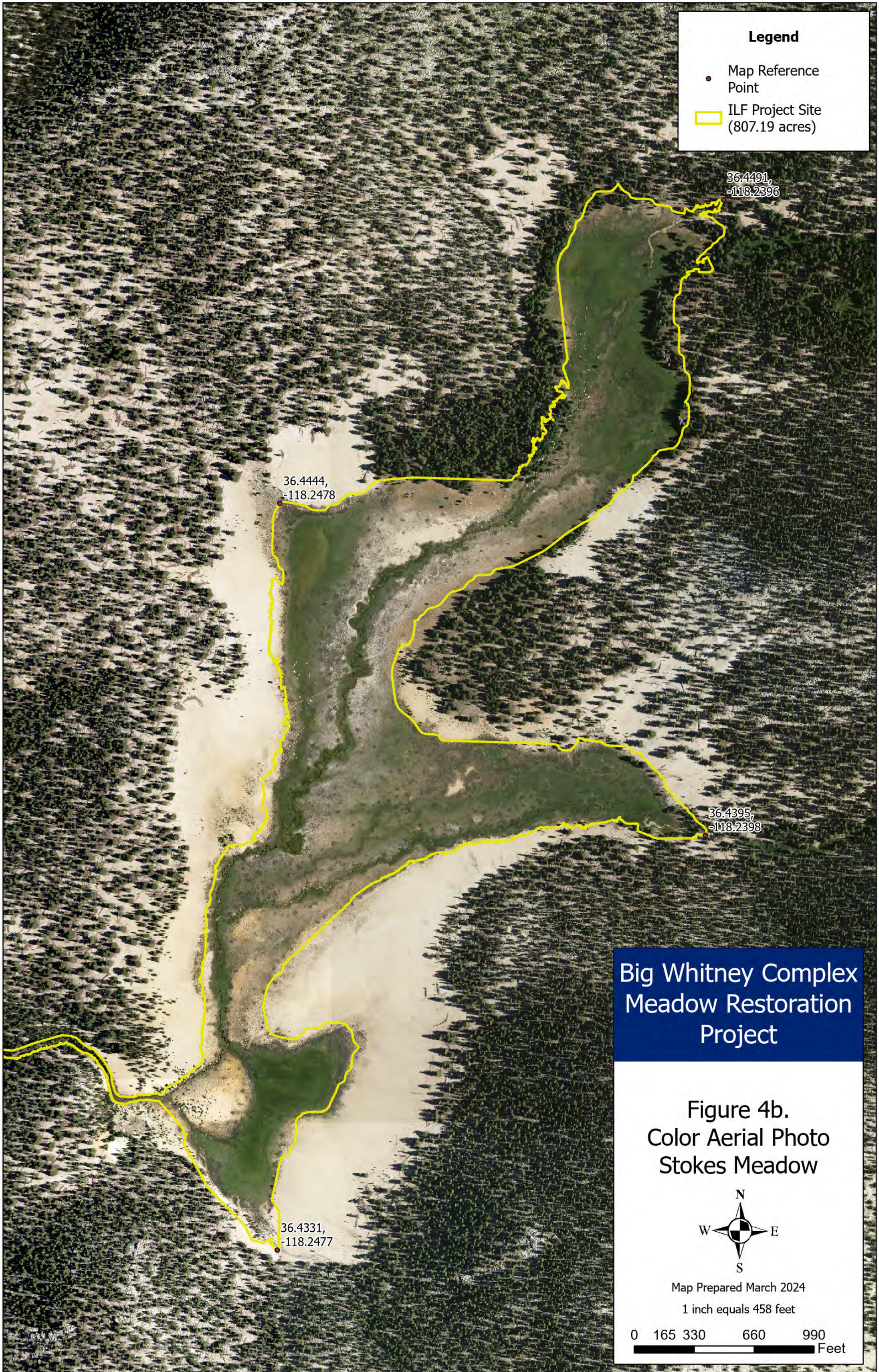
Map Prepared March 2024

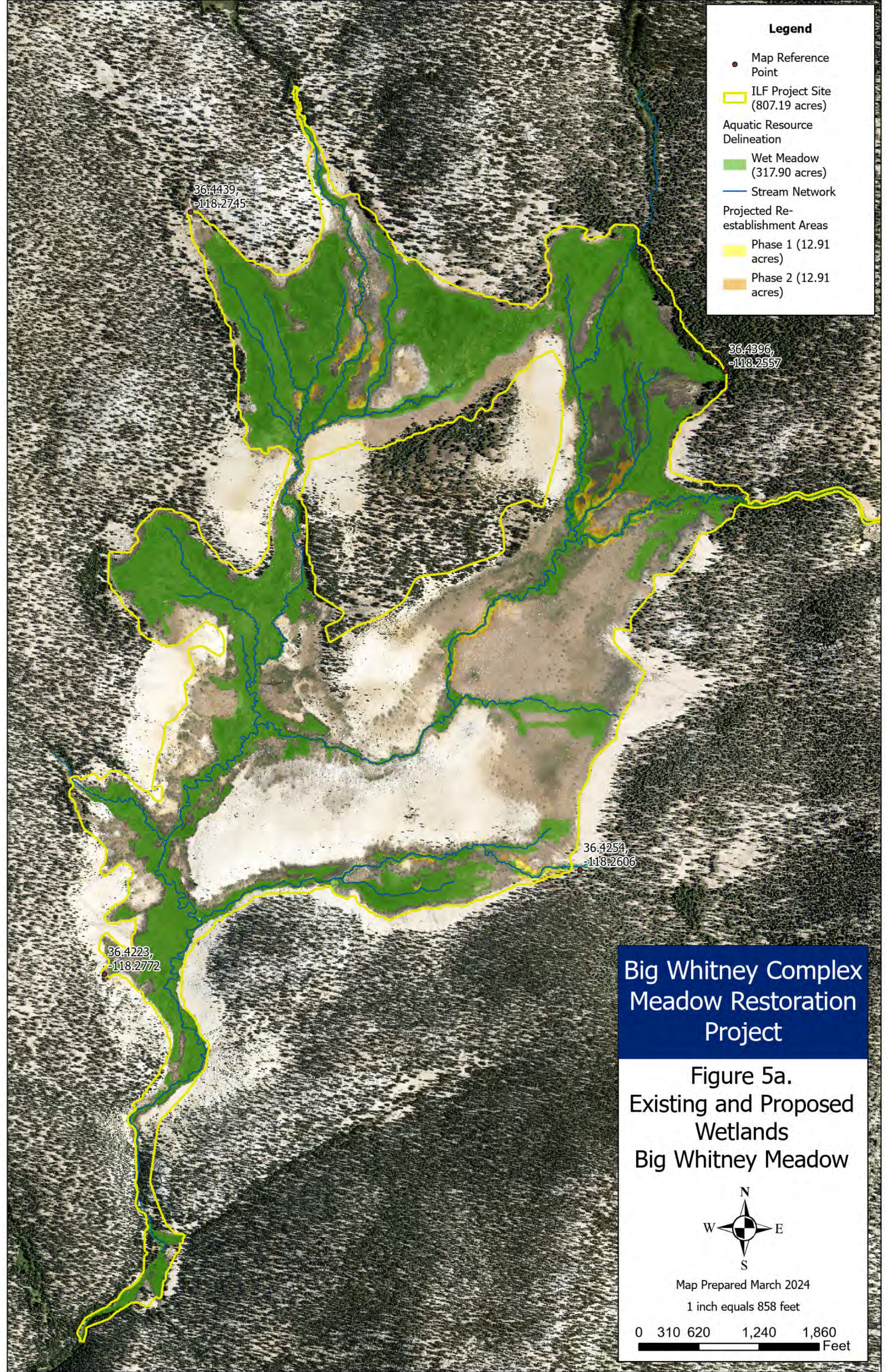
1 inch equals 931 feet



Legend

- Map Reference Point
- ILF Project Site (807.19 acres)





Legend

- Map Reference Point
- ILF Project Site (807.19 acres)
- Aquatic Resource Delineation
- Wet Meadow (317.90 acres)
- Stream Network
- Projected Re-establishment Areas
- Phase 1 (12.91 acres)
- Phase 2 (12.91 acres)

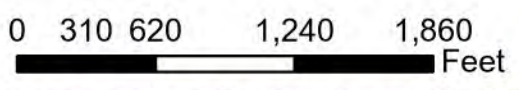
Big Whitney Complex Meadow Restoration Project

**Figure 5a.
Existing and Proposed Wetlands
Big Whitney Meadow**



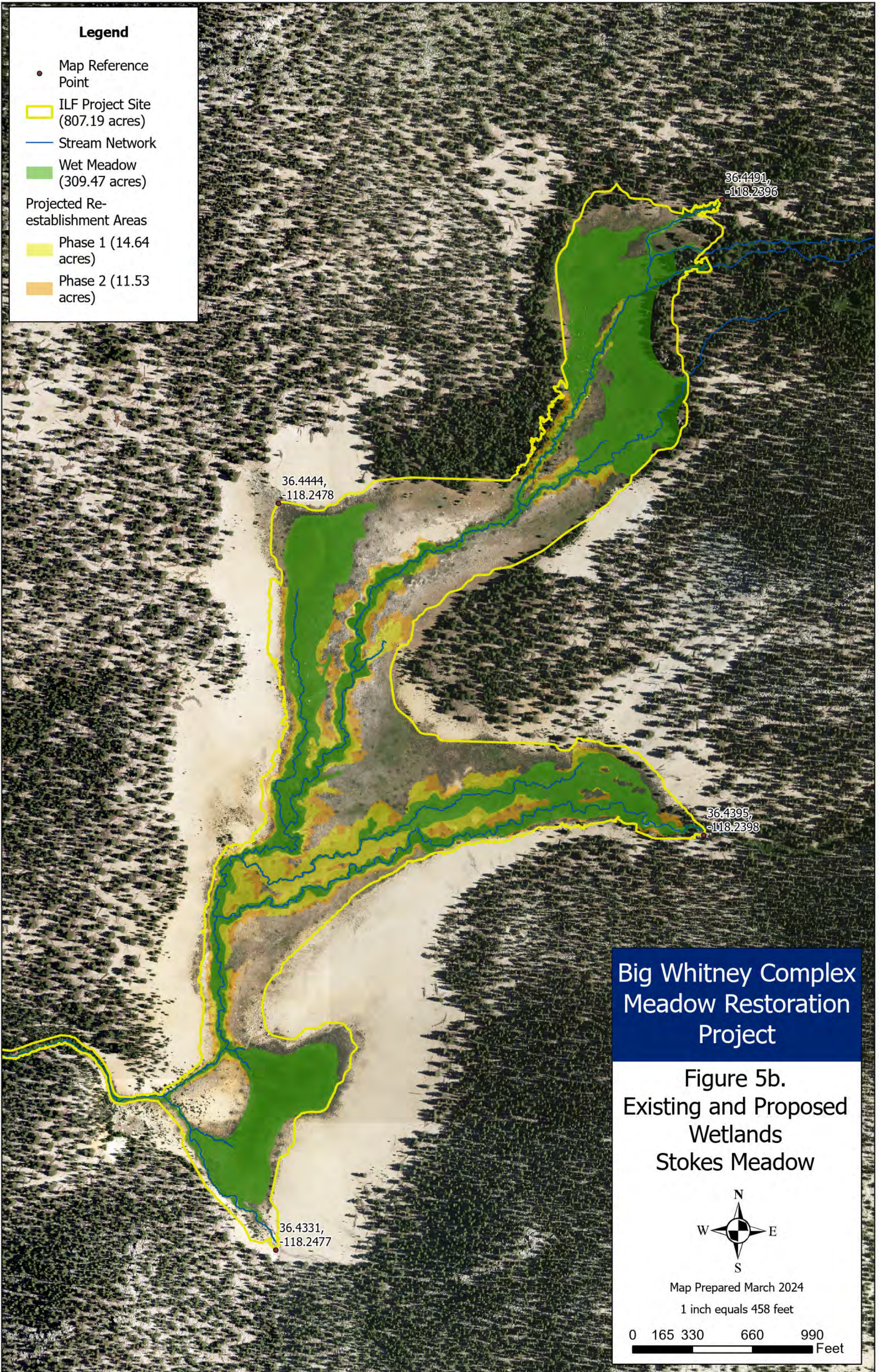
Map Prepared March 2024

1 inch equals 858 feet



Legend

- Map Reference Point
- ILF Project Site (807.19 acres)
- Stream Network
- Wet Meadow (309.47 acres)
- Projected Re-establishment Areas
 - Phase 1 (14.64 acres)
 - Phase 2 (11.53 acres)



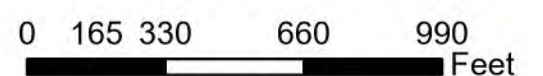
**Big Whitney Complex
Meadow Restoration
Project**

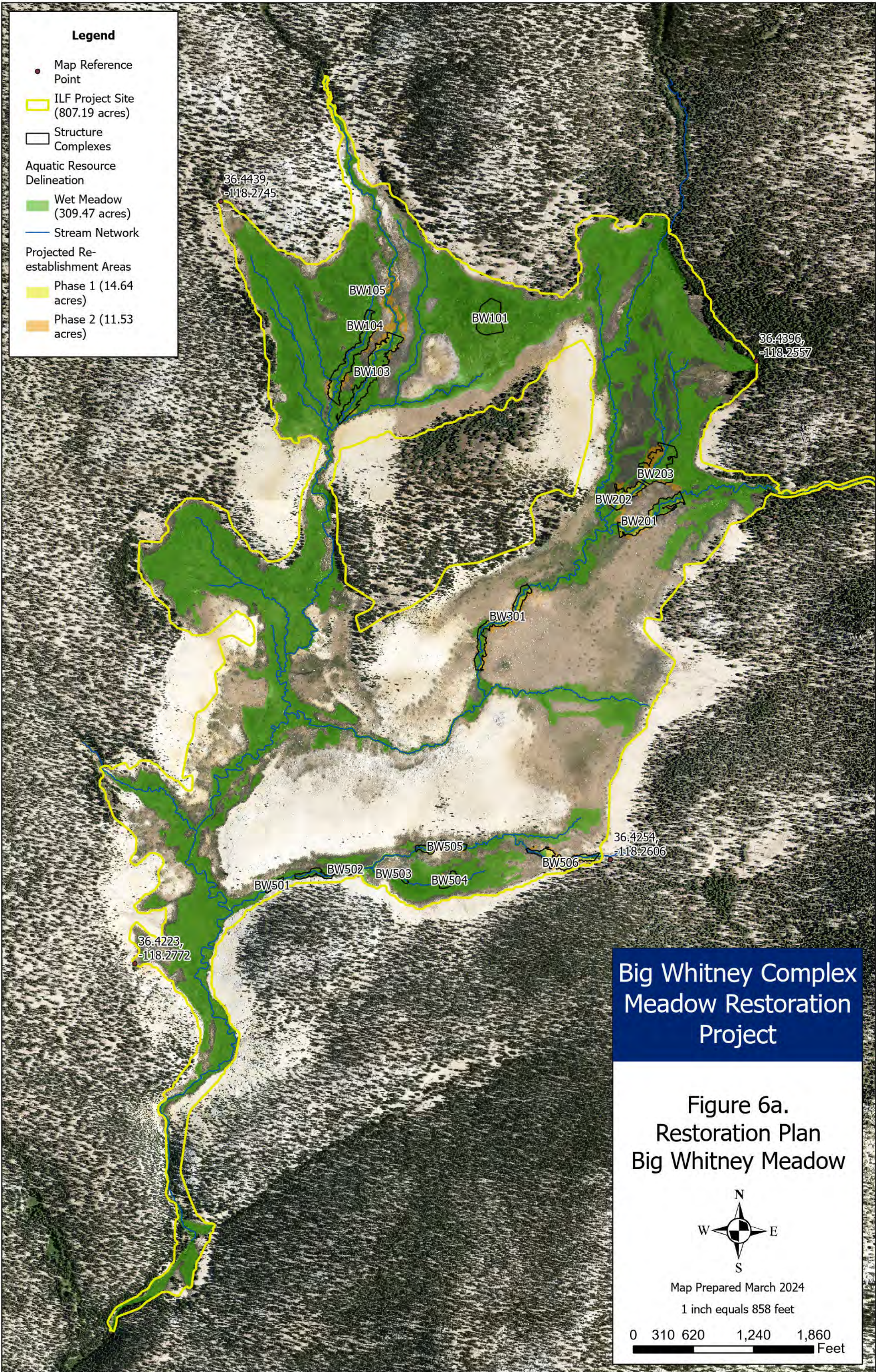
**Figure 5b.
Existing and Proposed
Wetlands
Stokes Meadow**

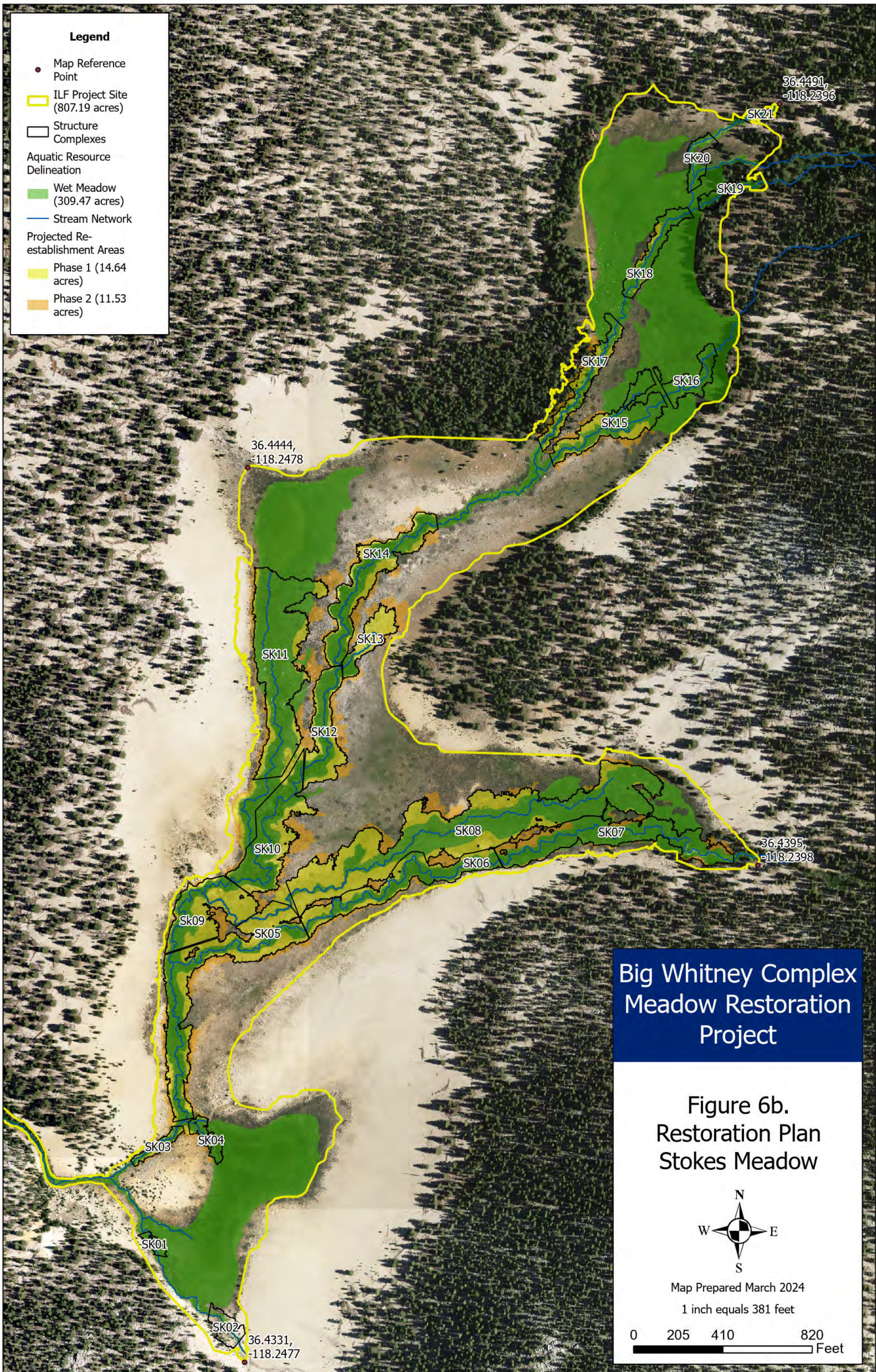


Map Prepared March 2024

1 inch equals 458 feet







Legend

- Map Reference Point
- ILF Project Site (807.19 acres)
- Structure Complexes
- Aquatic Resource Delineation
- Wet Meadow (309.47 acres)
- Stream Network
- Projected Re-establishment Areas
- Phase 1 (14.64 acres)
- Phase 2 (11.53 acres)

Big Whitney Complex Meadow Restoration Project

**Figure 6b.
Restoration Plan
Stokes Meadow**



Map Prepared March 2024
1 inch equals 381 feet

