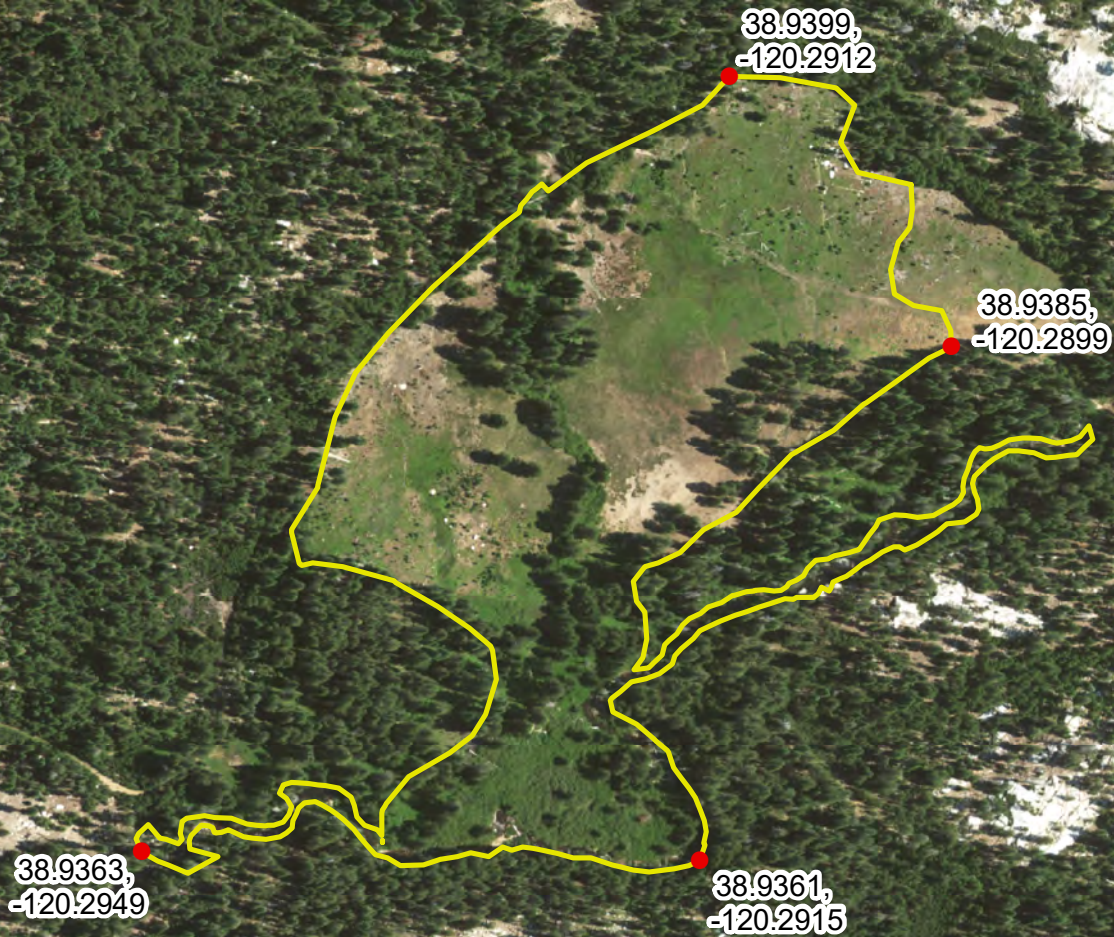


Legend

- Map Reference Point
- ILF Project Site (19.26 acres)



Calf Pasture Meadow Restoration Project Initial Project Prospectus

Figure 4.
Color Aerial Photograph

May 2021



1 inch equals 0.1 miles

210 105 0 210



Feet
Source: NAIP (2020)
Prepared By: Chris Gurney, NFWF

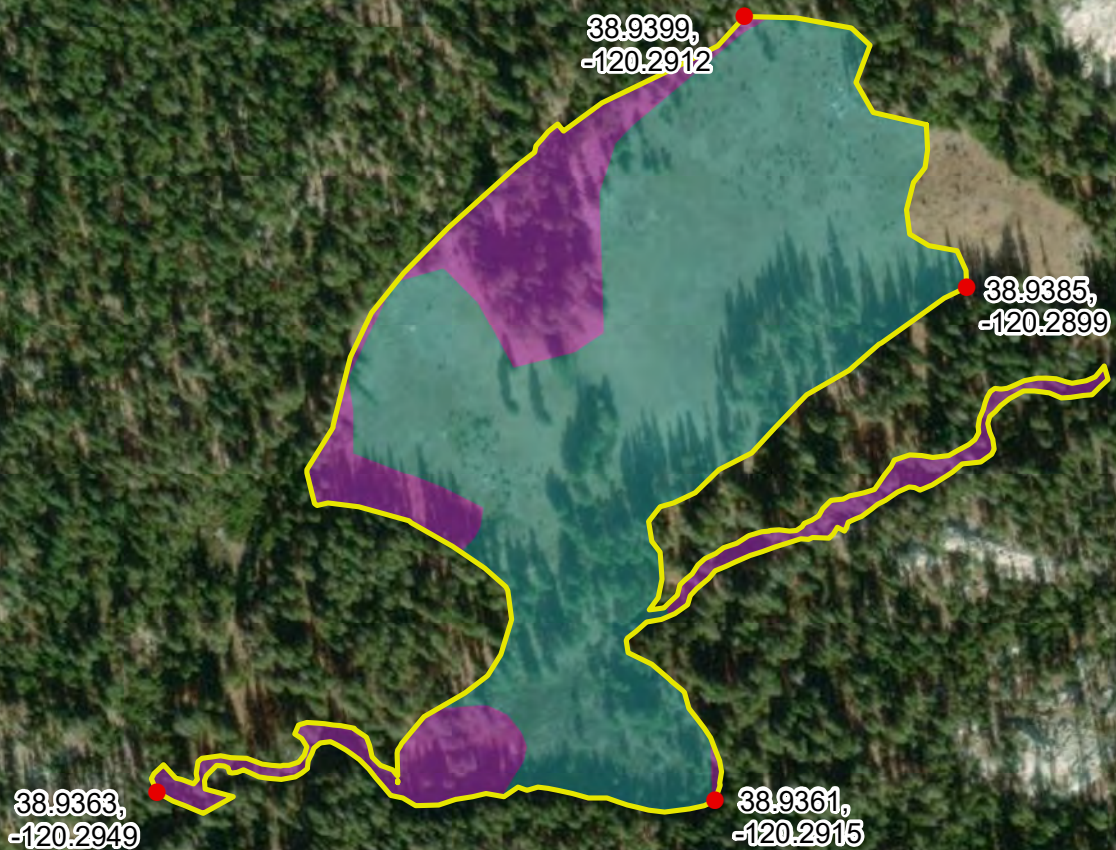
Source: Esri, DigitalGlobe, GeoEye, Earthstar Geographics, CNES/Airbus DS, USDA, USGS, AeroGRID, IGN, and the GIS User Community

Legend

- Map Reference Point
- ILF Project Site (19.26 acres)

Soil Map Unit

- 103-Aquepts, Umbrepts and 0 to 15% slopes soils
- 201-Tallac very cobbly sandy loam, 2 to 30% slopes



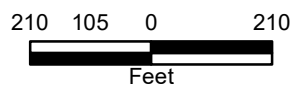
Calf Pasture Meadow Restoration Project Initial Project Prospectus

Figure 5. Soils Map

May 2021



1 inch equals 0.1 miles



Source: USDA NRCS Web Soil Survey
Prepared By: Chris Gurney, NFWF

Source: Esri, DigitalGlobe, GeoEye, Earthstar Geographics, CNES/Airbus DS, USDA, USGS, AeroGRID, IGN, and the GIS User Community

Legend

● Map Reference Point

ILF Project Site (19.26 acres)

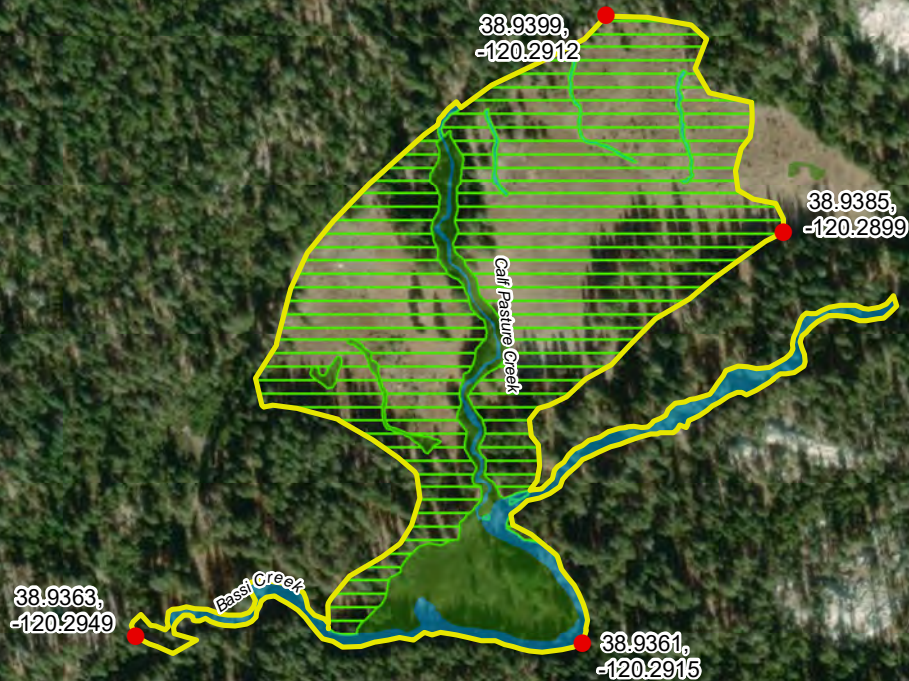
Existing Aquatic Resources

Wet Meadow (2.37 acres)

Stream Channels (1.87 acres)

Proposed Mitigation

Wet Meadow Re-establishment (14.95 acres)



Calf Pasture Meadow Restoration Project Initial Project Prospectus

Figure 6. Existing and Proposed Wetlands

May 2021



1 inch equals 0.1 miles

270 135 0 270

Feet

Source: USGS National Map
Prepared By: Chris Gurney, NFWF

Source: Esri, DigitalGlobe, GeoEye, Earthstar Geographics, CNES/Airbus DS, USDA, USGS, AeroGRID, IGN, and the GIS User Community

Legend

ILF Project Site (19.26 acres)

Area of Potential Effect (43.65 acres)

--- Existing Trail

▲▲ Proposed Trail Realignment

Existing Aquatic Resources

Wet Meadow (2.37 acres)

Stream Channels (1.87 acres)

Activity

Channel Fill

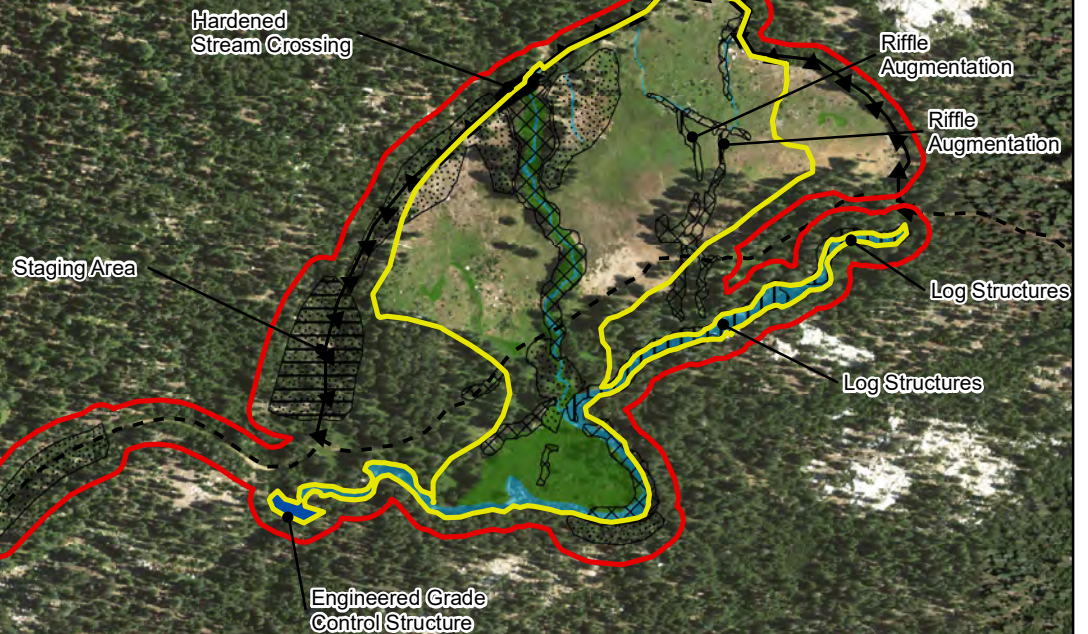
Borrow Area

Log Structures and Riffle Augmentation

Staging Area

Engineered Grade Control Structure

Hardened Stream Crossing



Calf Pasture Meadow Restoration Project Initial Project Prospectus

Figure 7. Restoration Plan

May 2021



1 inch equals 0.1 miles

325 162.5 0 325



Source: USGS National Map
Prepared By: Chris Gurney, NFWF

Source: Esri, DigitalGlobe, GeoEye, Earthstar Geographics, CNES/Airbus DS, USDA, USGS, AeroGRID, IGN, and the GIS User Community