

Figure 1 – Project Vicinity

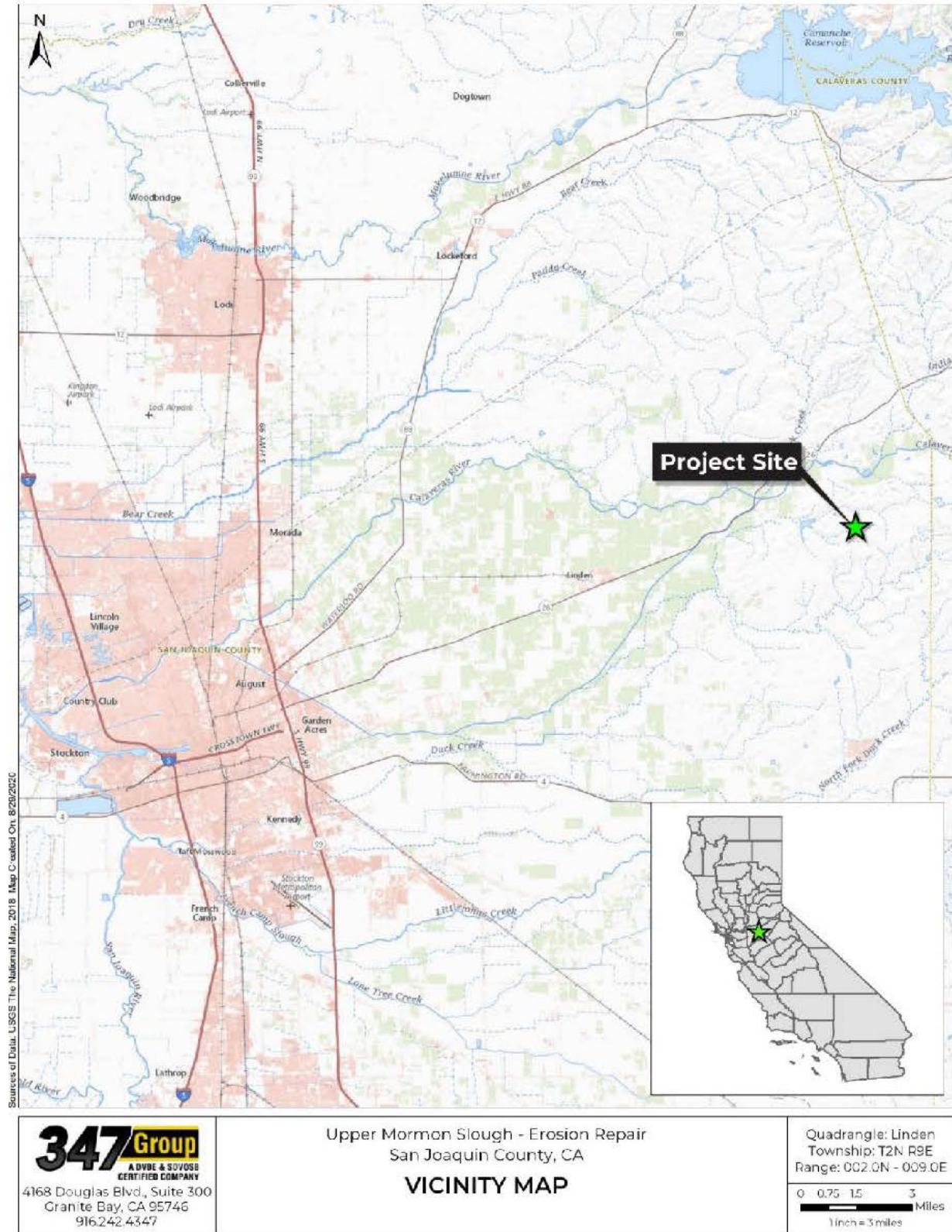
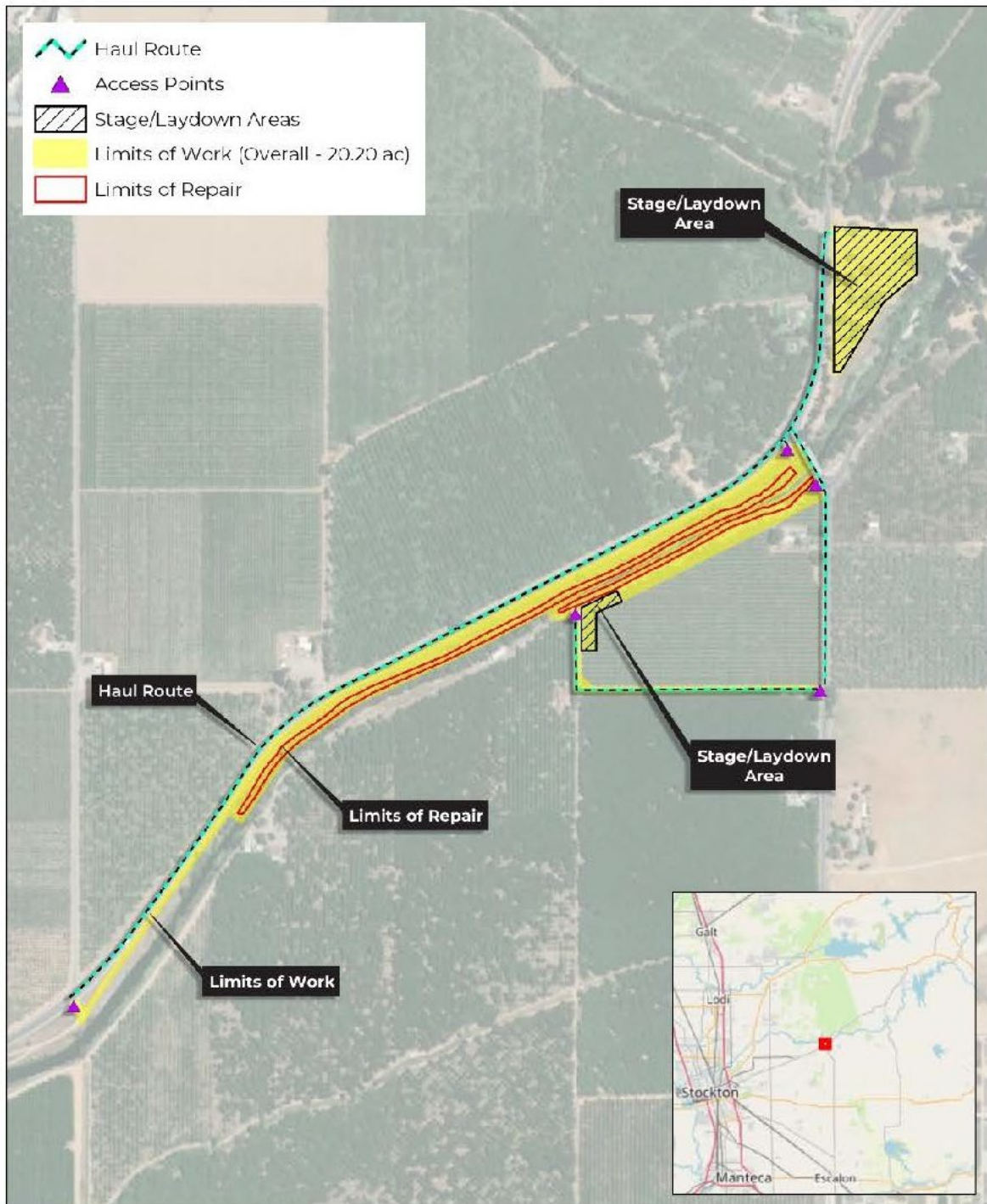


Figure 2 – Limits of Disturbance



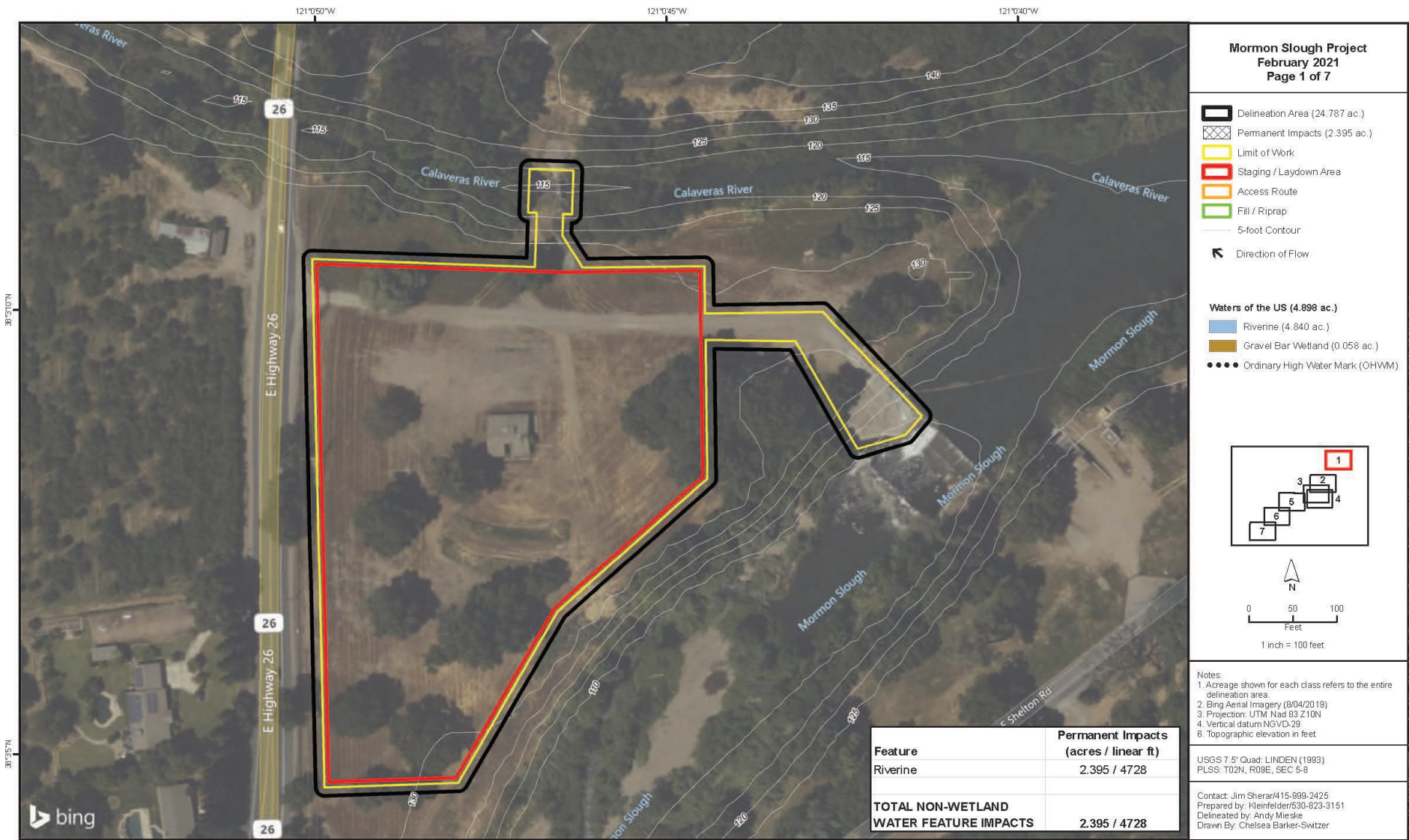
**347Group**  
 A DYBE & SOVOSE  
 CERTIFIED COMPANY  
 4168 Douglas Blvd., Suite 300  
 Granite Bay, CA 95746  
 916.242.4347

Upper Mormon Slough - Erosion Repair  
 San Joaquin County, CA  
**LIMITS OF DISTURBANCE**  
Sources of Data: Esri, DigitalGlobe, GeoEye, Earthstar Geographics, CNES/Airbus DS, USDA, USGS, AeroGRID, IGN, GIS User Community, and Knowledge™. Map created on 9/2/2022.

USCS 7.5-Minute Series -  
 Linden Quadrangle;  
 T. 2N, R. 9E,  
 Sections 5, 6, and 7  
 25-acre study area

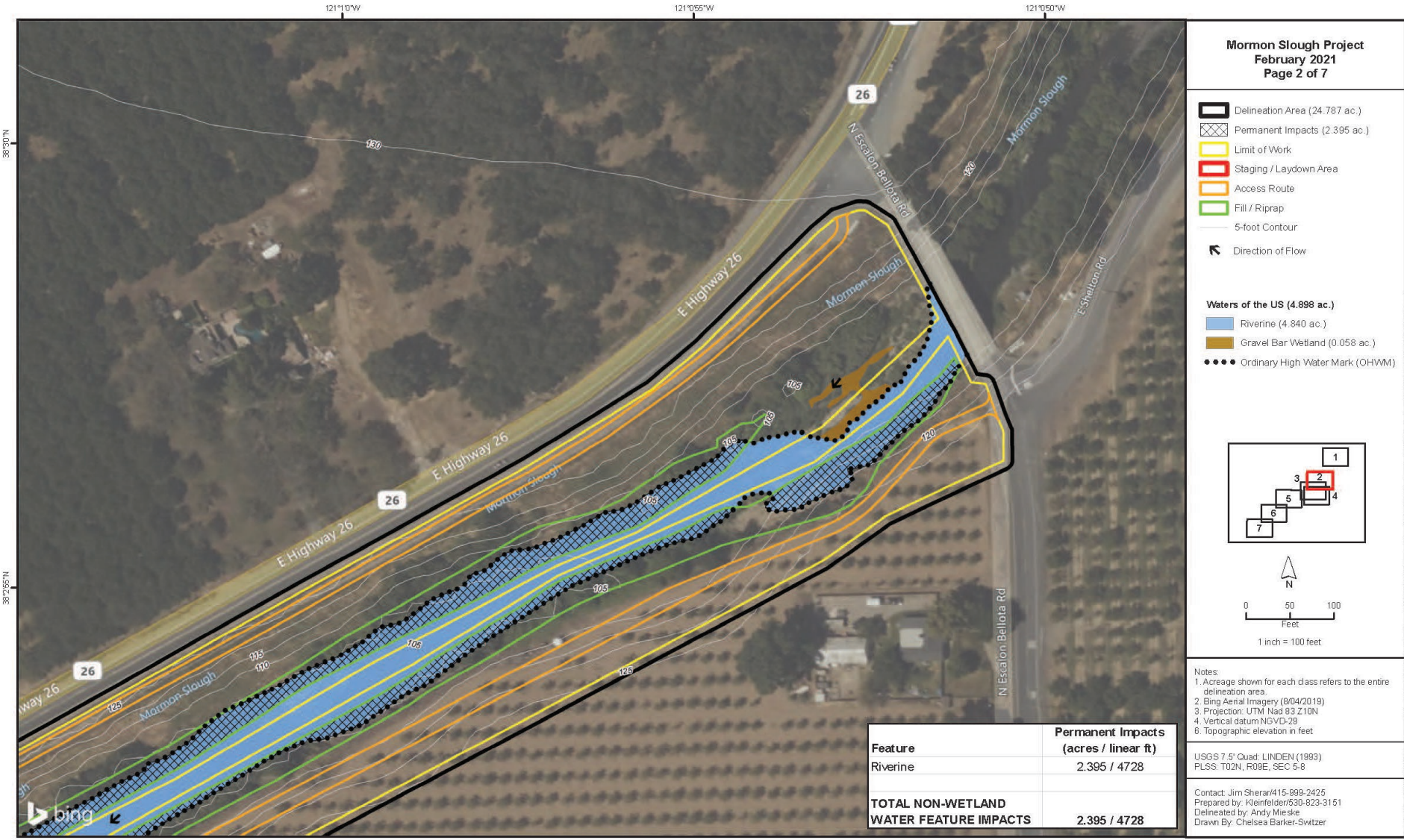
0 200 400 800  
 Feet  
 1:9,600

Figure 3 – Project Impacts



Mormon Slough  
 Impacts to Potential Waters of the United States

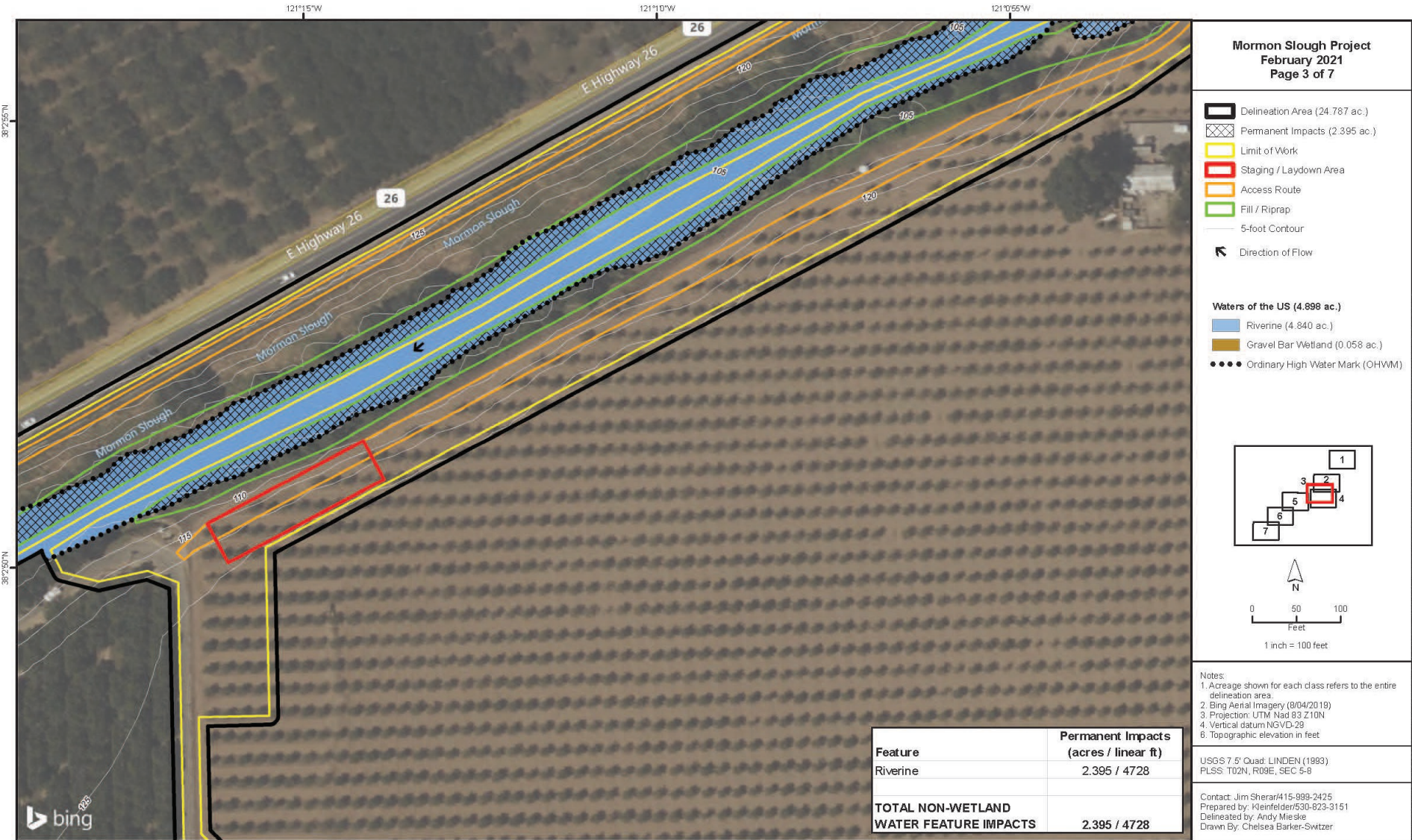
Upper Mormon Slough Erosion and Flood Control Project  
 404 Attachment 1 - Supplemental Information



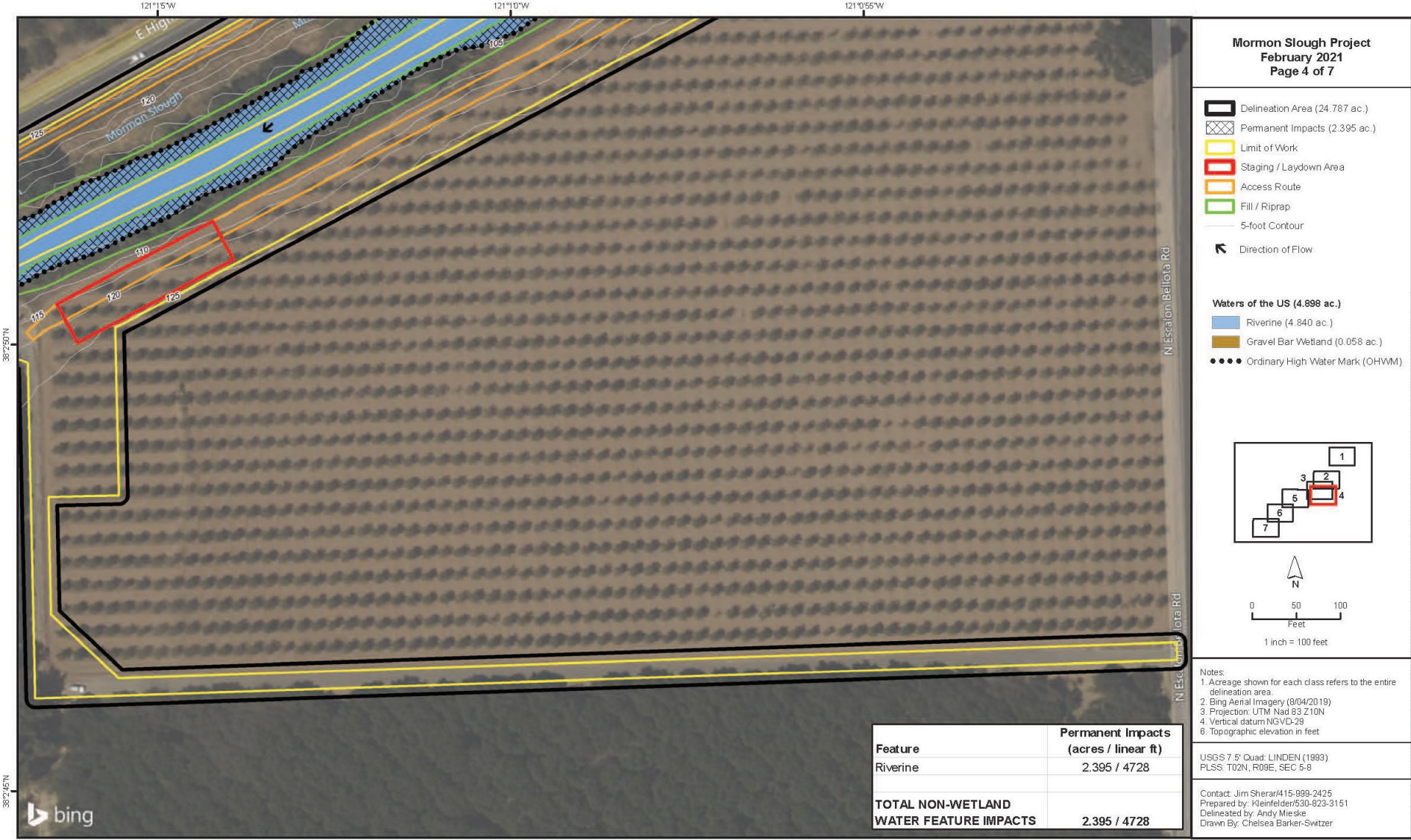
Feature	Permanent Impacts (acres / linear ft)
Riverine	2.395 / 4728
<b>TOTAL NON-WETLAND WATER FEATURE IMPACTS</b>	<b>2.395 / 4728</b>

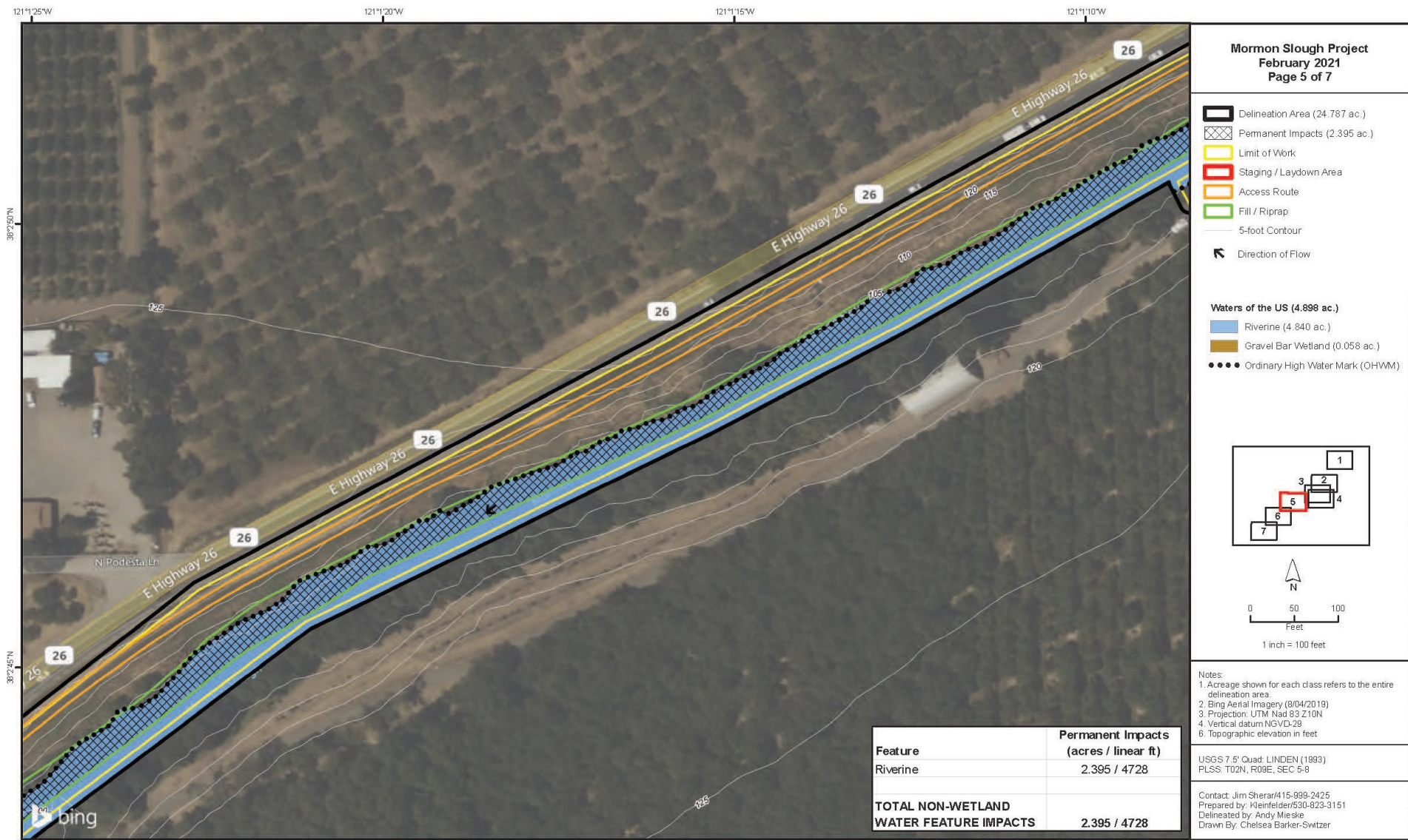


Mormon Slough  
 Impacts to Potential Waters of the United States



Mormon Slough  
 Impacts to Potential Waters of the United States

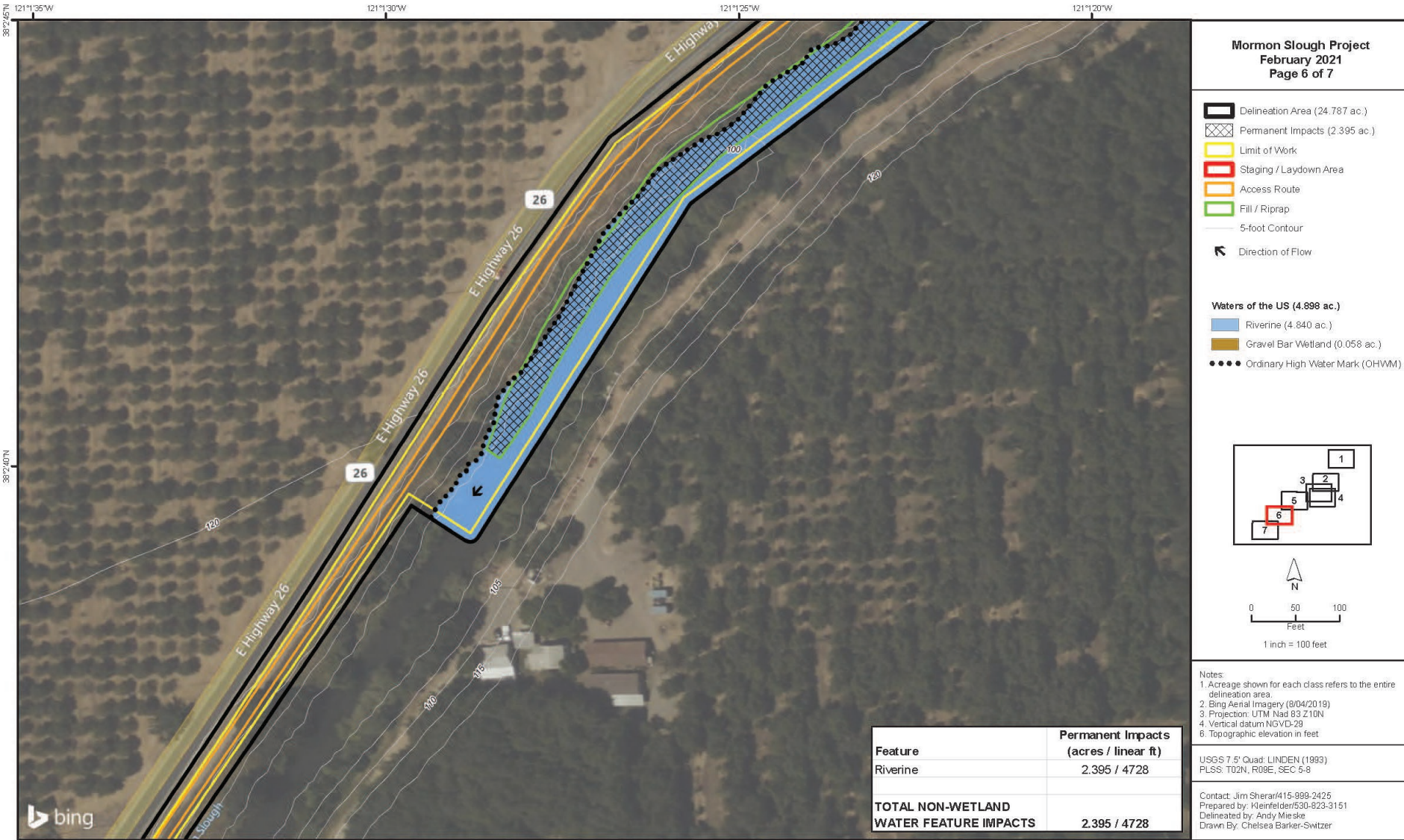




Feature	Permanent Impacts (acres / linear ft)
Riverine	2,395 / 4728
<b>TOTAL NON-WETLAND WATER FEATURE IMPACTS</b>	<b>2,395 / 4728</b>

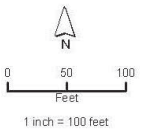
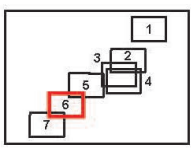


Upper Mormon Slough Erosion and Flood Control Project  
 404 Attachment 1 - Supplemental Information



**Mormon Slough Project**  
 February 2021  
 Page 6 of 7

- Delineation Area (24.787 ac.)
  - Permanent Impacts (2.395 ac.)
  - Limit of Work
  - Staging / Laydown Area
  - Access Route
  - Fill / Riprap
  - 5-foot Contour
  - Direction of Flow
- Waters of the US (4.898 ac.)**
- Riverine (4.840 ac.)
  - Gravel Bar Wetland (0.058 ac.)
  - Ordinary High Water Mark (OHWM)

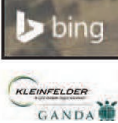


Feature	Permanent Impacts (acres / linear ft)
Riverine	2,395 / 4728
<b>TOTAL NON-WETLAND WATER FEATURE IMPACTS</b>	<b>2,395 / 4728</b>

Notes:  
 1. Acreage shown for each class refers to the entire delineation area.  
 2. Bing Aerial Imagery (8/04/2019)  
 3. Projection: UTM Nad 83 Z10N  
 4. Vertical datum NGVD-29  
 5. Topographic elevation in feet

USGS 7.5' Quad: LINDEN (1993)  
 PLSS: T02N, R08E, SEC 5-8

Contact: Jim Sherar/415-999-2425  
 Prepared by: Kleinfelder/530-823-3151  
 Delineated by: Andy Mieske  
 Drawn By: Chelsea Barker-Switzer



**Mormon Slough**  
 Impacts to Potential Waters of the United States



