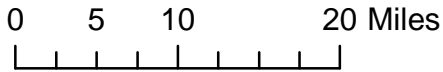


SIERRA-FOOTHILL



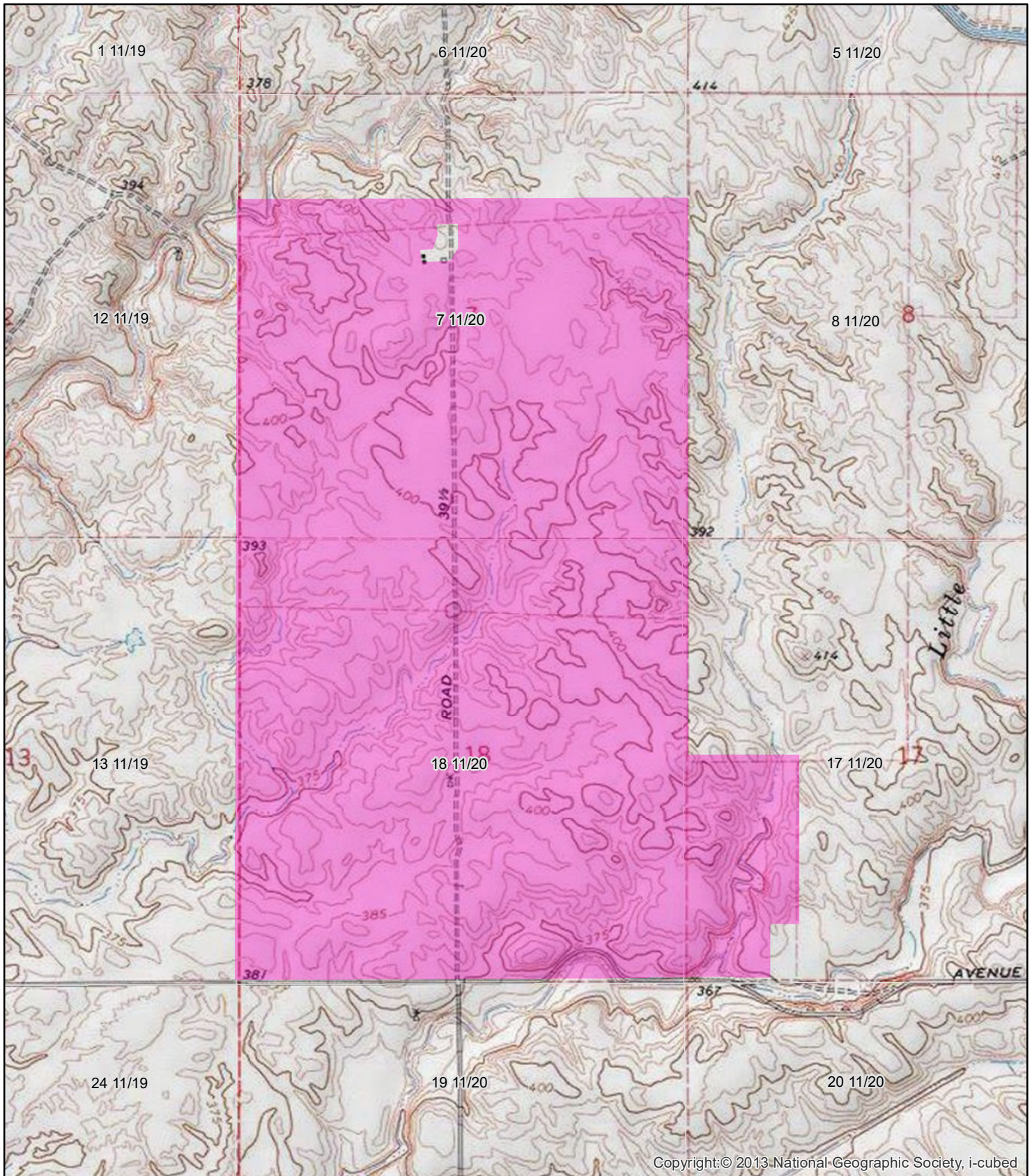
· CONSERVANCY ·



- Fenston Mitigation Bank
- County Boundaries

General Location Map Fenston Mitigation Bank

Date: May 15, 2018
 Source: ESRI Basemap
 Map Author: Melissa Odell



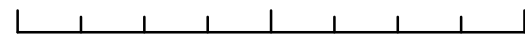
Copyright:© 2013 National Geographic Society, i-cubed

SIERRA-FOOTHILL



· CONSERVANCY ·

0 0.25 0.5 1 Miles

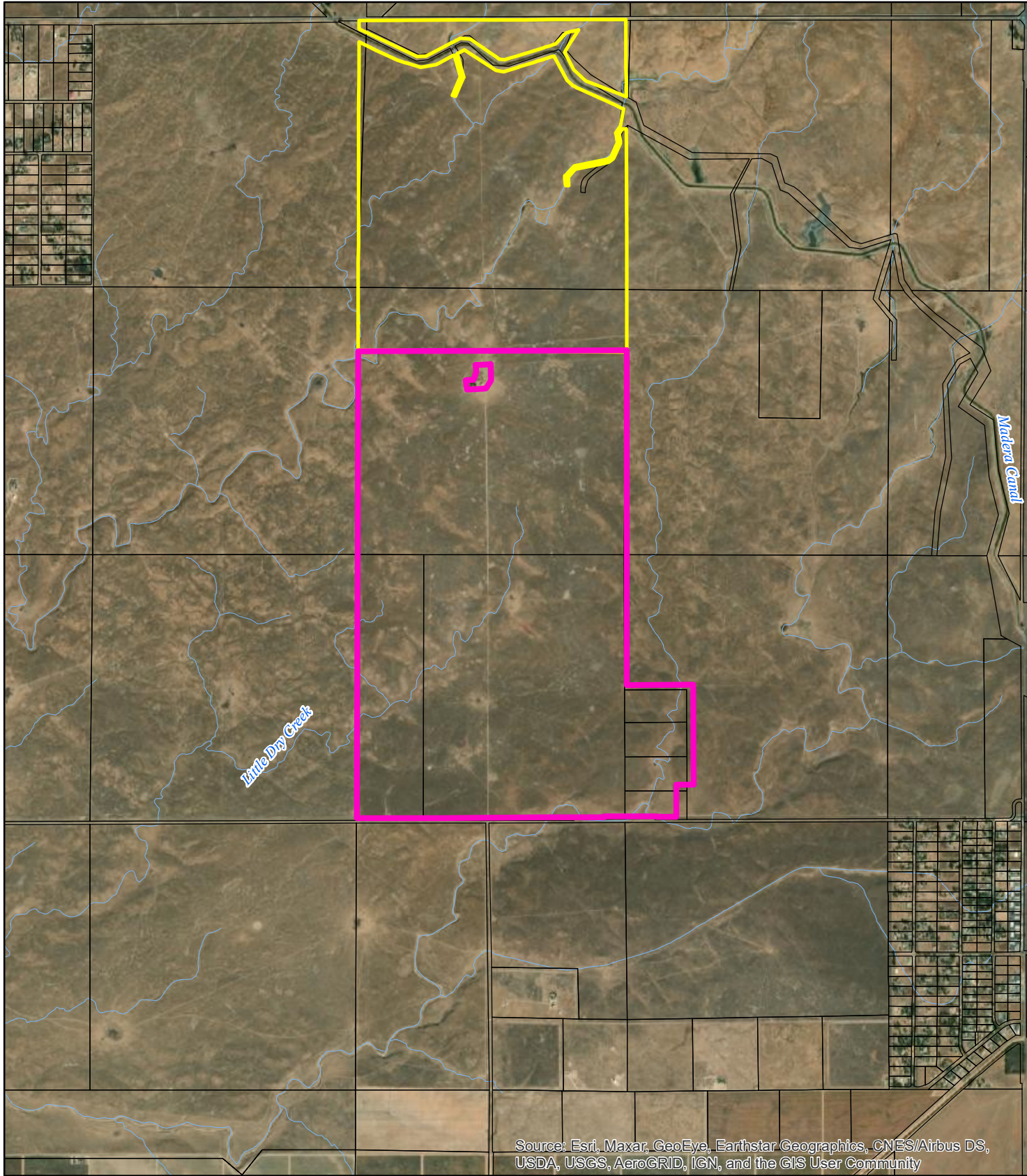


- Fenston Mitigation Bank
- Section lines (labeled with S, T/R)



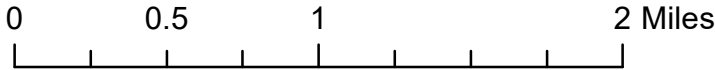
USGS Topographic Map
Fenston Mitigation Bank
 Lanes Bridge 7.5 minute quadrangle
 1:24,000

Date: January 24, 2021
 Source: Madera County, ESRI Basemap
 Map Author: Melissa Odell



Source: Esri, Maxar, GeoEye, Earthstar Geographics, CNES/Airbus DS, USDA, USGS, AeroGRID, IGN, and the GIS User Community

SIERRA-FOOTHILL



- Fenston Mitigation Bank
- Fenston Conservation Easement 765 ac
- Parcels
- Streams

Aerial Map Fenston Mitigation Bank



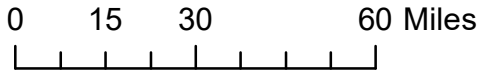
Date: January 24, 2021
 Source: Madera County, National Hydrography Database (NHD), ESRI Basemap
 Map Author: Melissa Odell



SIERRA-FOOTHILL



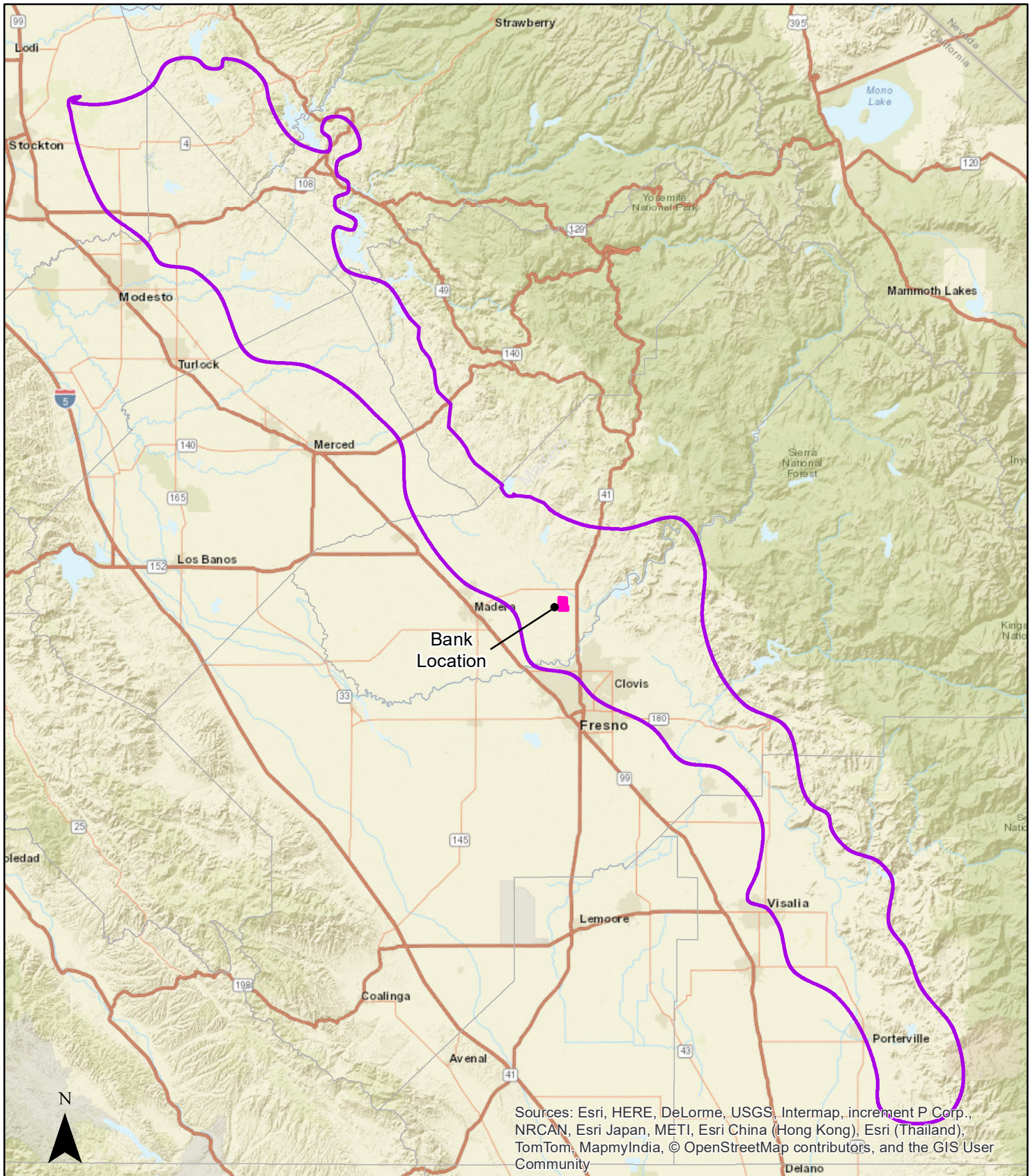
· CONSERVANCY ·



PROPOSED: Wetland Service Area Fenston Mitigation Bank

- Wetland Service Area
- Fenston Mitigation Bank
- County Boundaries

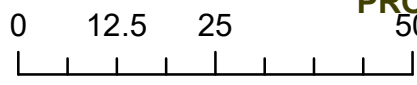
Date: November 10, 2020
 Source: ESRI Basemap, NHD, EPA
 Map Author: Melissa Odell



Sources: Esri, HERE, DeLorme, USGS, Intermap, increment P Corp., NRCAN, Esri Japan, METI, Esri China (Hong Kong), Esri (Thailand), TomTom, MapmyIndia, © OpenStreetMap contributors, and the GIS User Community

PROPOSED:




Wetland Species Service Area Fenston Mitigation Bank



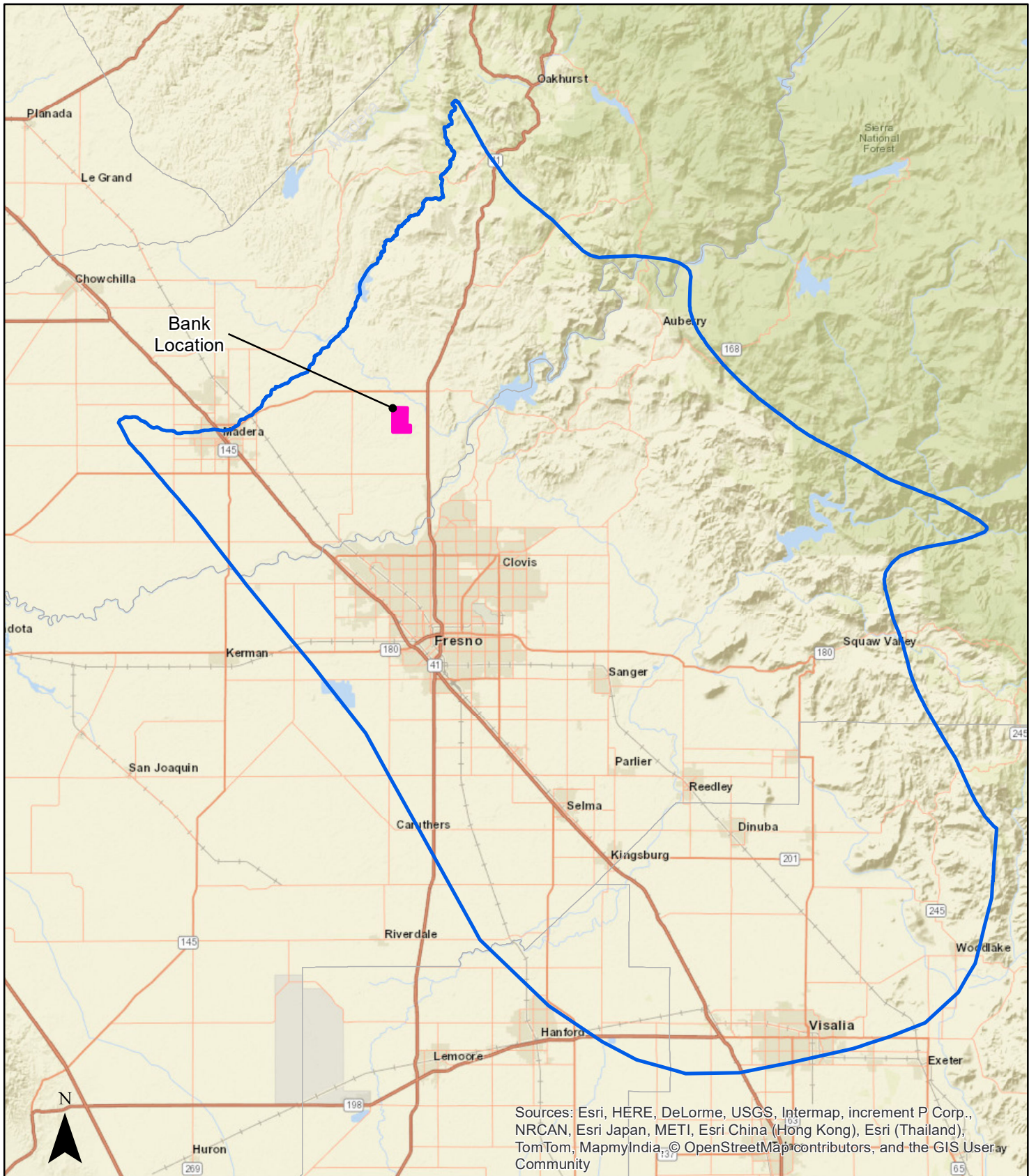
SIERRA-FOOTHILL



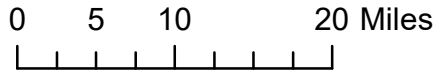
· CONSERVANCY ·

-  Wetland Species Service Area
-  Fenston Mitigation Bank
-  County Boundaries

Date: November 10, 2020
 Source: ESRI Basemap, NHD, EPA, USFWS (SSFVPR)
 Map Author: Melissa Odell



PROPOSED:






CA Tiger Salamander Service Area Fenston Mitigation Bank

SIERRA-FOOTHILL



· CONSERVANCY ·

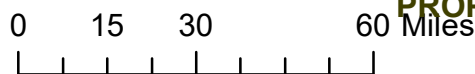
-  CA Tiger Salamander Service Area - Southern San Joaquin CTS Recovery Unit
-  Fenston Mitigation Bank
-  County Boundaries




Date: November 10, 2020
 Source: ESRI Basemap, NHD, EPA, USFWS
 Map Author: Melissa Odell



Sources: Esri, HERE, DeLorme, USGS, Intermap, increment P Corp., NRCAN, Esri Japan, METI, Esri China (Hong Kong), Esri (Thailand), TomTom, MapmyIndia, © OpenStreetMap contributors, and the GIS User Community

**PROPOSED: Upland Species Service Area
Fenston Mitigation Bank**



-  Upland Species Service Area
-  Fenston Mitigation Bank
-  County Boundaries

Date: November 10, 2020
Source: ESRI Basemap, NHD, EPA, USFWS (SSFVPR)
Map Author: Melissa Odell

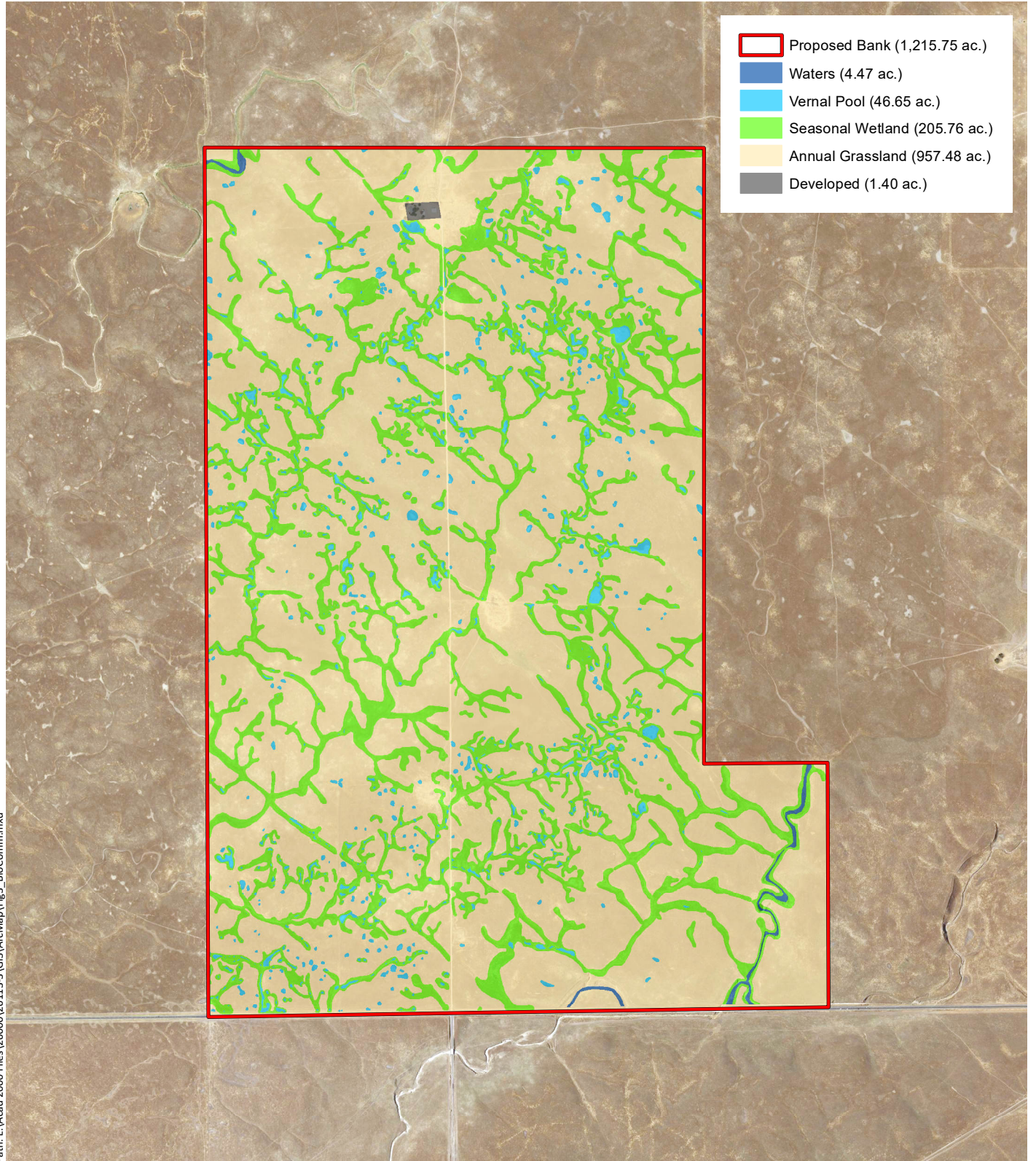
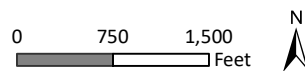


Figure 3. Biological Communities within the Proposed Bank

Fenston Conservation Bank
Madera County, California





* Labels on map indicate distinct populations. Colored ellipses encompass points belonging to each population.
 ** Larger distance between Orcina1 points due to existing CNDDDB occurrence EONDX #6232.



September 2019

Botanical Resource Survey Report

Legend	
	Study Area
	Roads
	Succulent owl's clover
	San Joaquin Valley Orcutt grass
	Special-Status Plant Species
	Common Name

Figure 4
 Special-Status Plant Species within the Study Area
 Fenston Ranch Property
 Sierra Foothill Conservancy and
 Vulcan Materials



Photo 1. Vernal Pool 220o near southern end of Bank, view north, 4/07/2020.



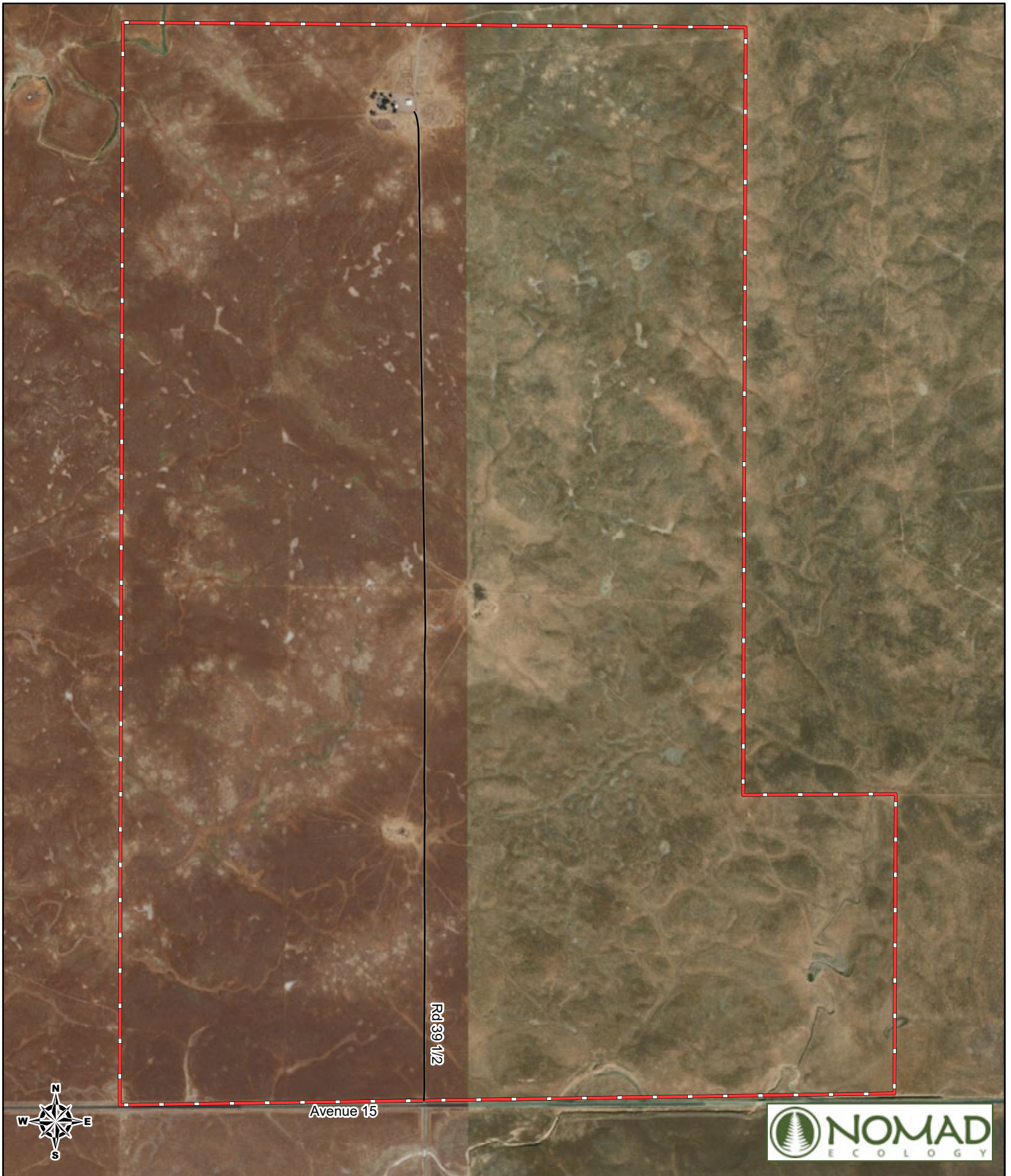
Photo 2. Vernal Pool 278i near northern boundary Bank, view south, 4/07/2020.



Photo 3. Vernal Pool 621i near southern boundary, view west, 4/07/2020.



Photo 4. Vernal Pool 895i in watershed to the south east, view southeast 4/07/2020.



September 2019

Botanical Resource Survey Report

Legend




-  Fenston Ranch Study Area
-  Roads

Figure 2
Aerial Imagery of the Study Area
 Fenston Ranch Property
 Sierra Foothill Conservancy and
 Vulcan Materials

1:13,080

0 545 1,090

 Feet



Metamorphosed California tiger salamander—Intermittent
Drainage 7B (5-21-19)



Metamorphosed California tiger salamander (close up) 5-21-19





Receding breeding pond (5-7-19)



Young western spadefoot



Western spadefoot (close up)



Young western spadefoot sheltering in soil crack