

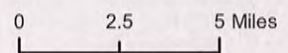
**Project Area**



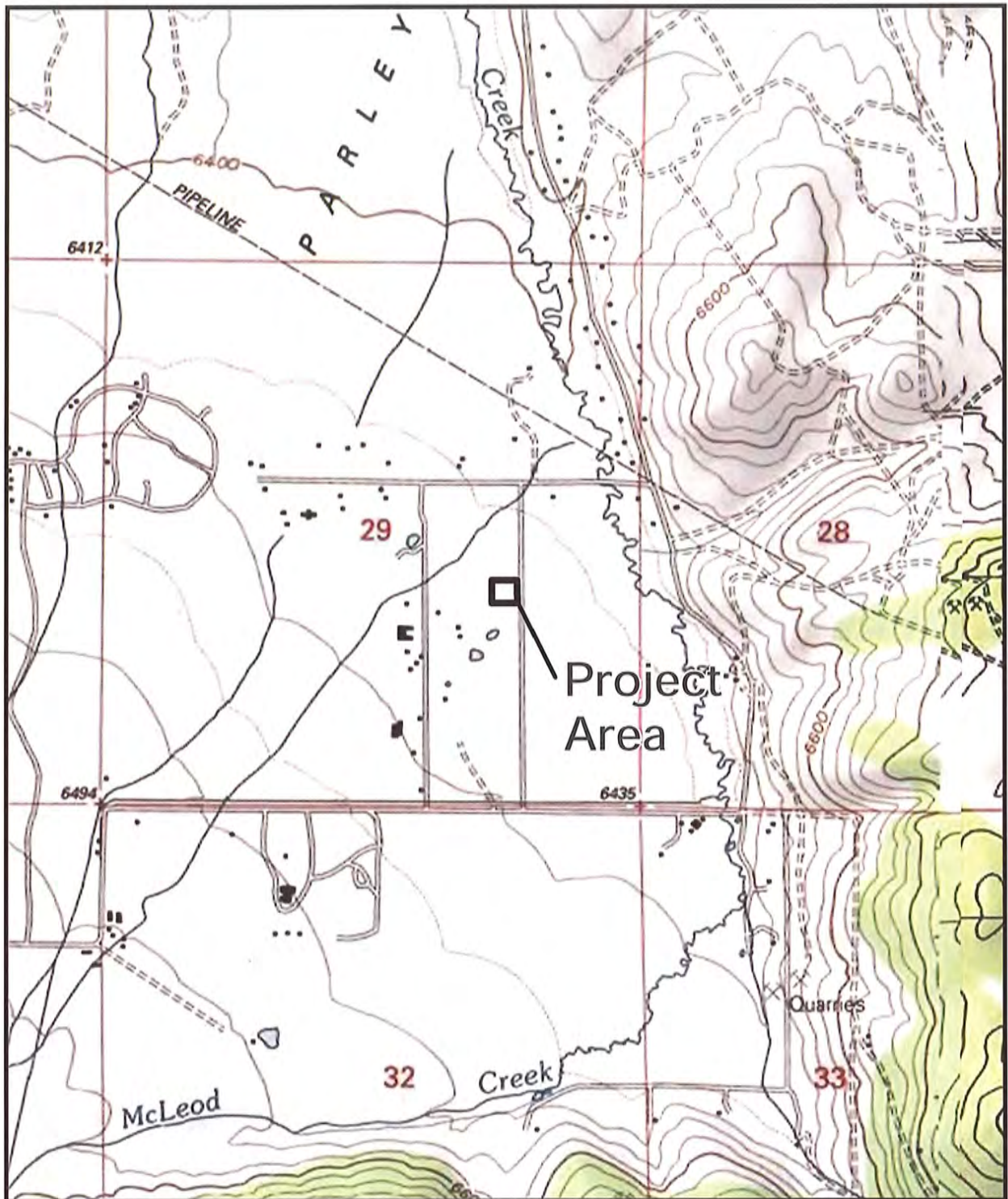
**BIO-WEST**  
[www.bio-west.com](http://www.bio-west.com)  
 435.752.4202

Driving directions: Travel from Salt Lake City on Interstate 80 East approximately 20 miles to Exit 145, Kimball Junction/ Park City. Exit right onto UT 224 South. Travel 2.5 miles south and turn left onto Old Ranch Road. Travel approximately 2 miles east on Old Ranch Road and turn left onto 300 West/Old Meadow Lane. Travel north approximately 0.4 mile on 300 West and the project area is on the left side of the road.

**Snyderville  
 Wetland Delineation  
 Location Map**



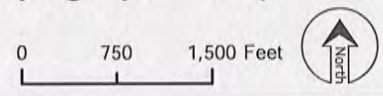
Map Date: 9/15/2015  
 Coordinate System: NAD 1983 UTM Zone 12N  
 Projection: Transverse Mercator/Dalum: North American 1983

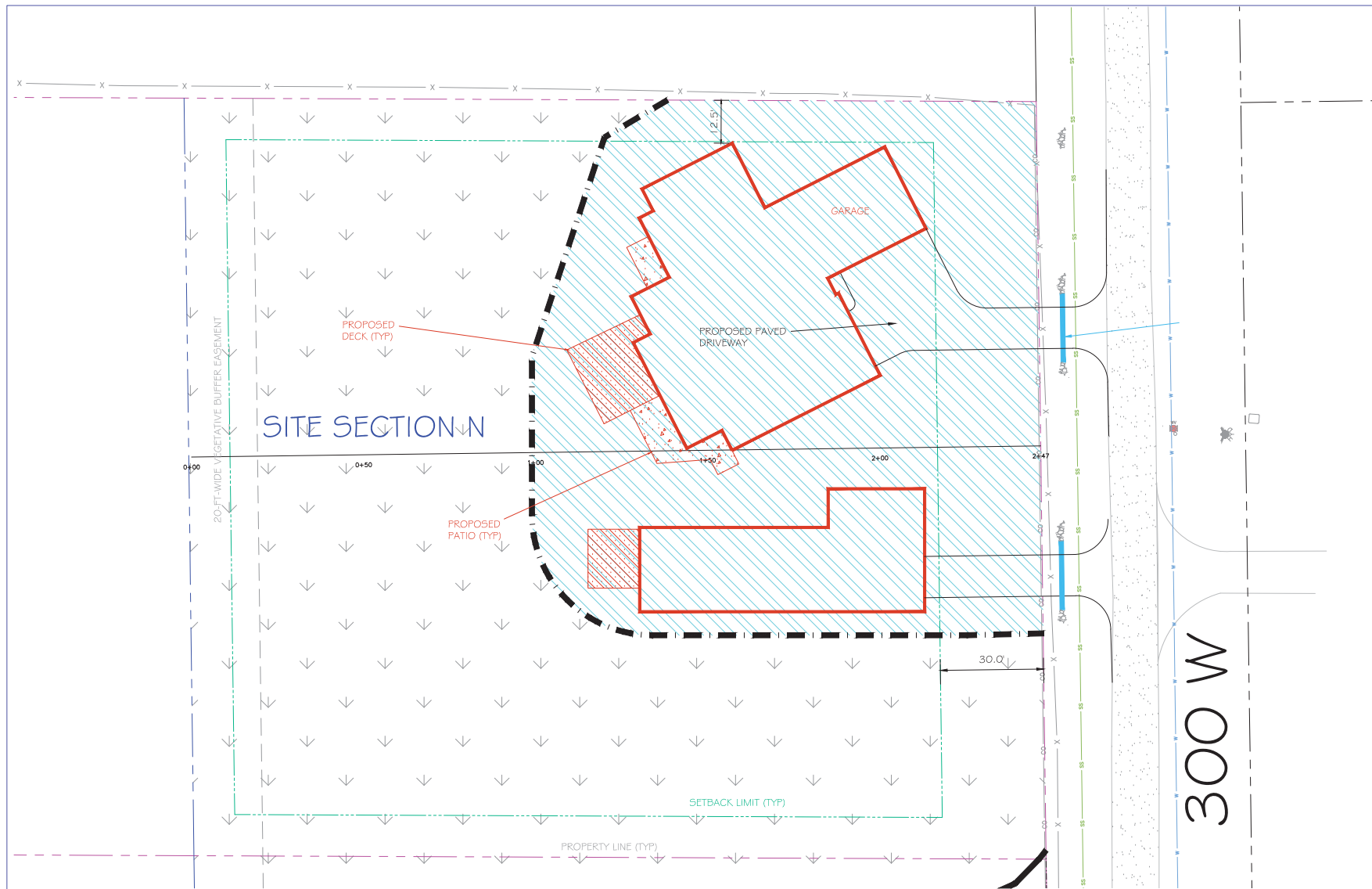



**BIO-WEST**  
[www.bio-west.com](http://www.bio-west.com)  
 435.752.4202

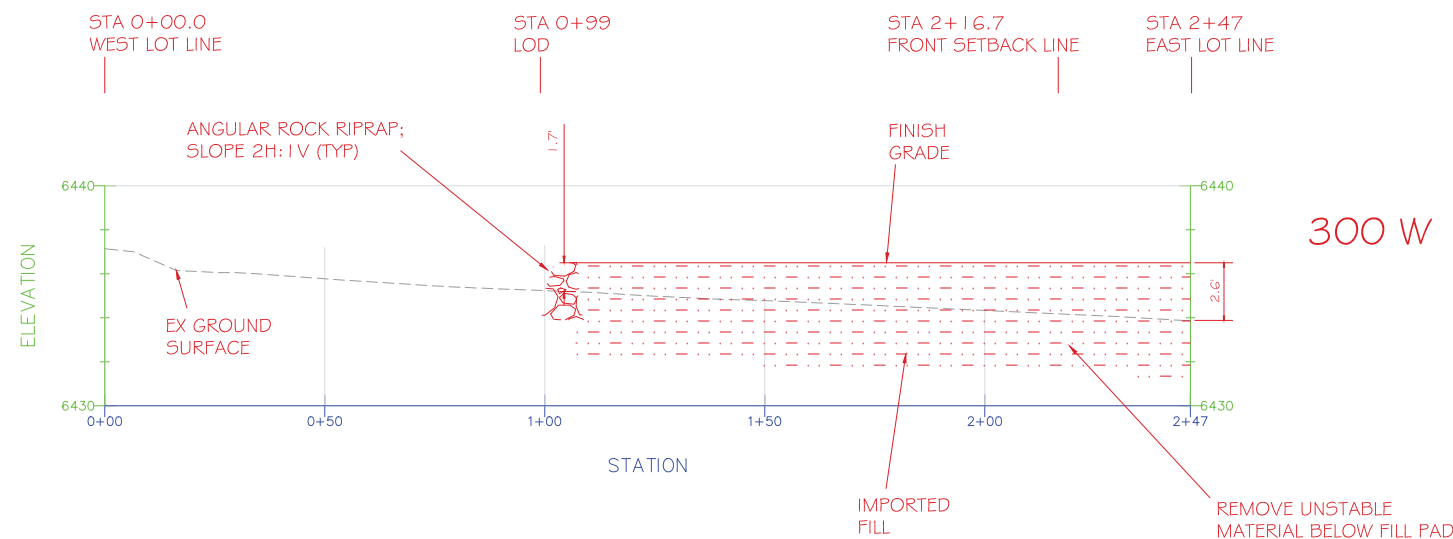
Map Date: 4/1/2016  
 Coordinate System: NAD 1983 UTM Zone 12N  
 Projection: Transverse Mercator Datum: North American 1983

Snyderville, North Lot  
 Wetland Delineation  
 Topographic Map

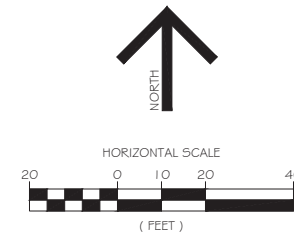




PLAN VIEW



SITE SECTION N



LEGEND

EXISTING SURFACE RUNOFF DIRECTION	.....>
PROPOSED SURFACE RUNOFF DIRECTION	.....▶
EXISTING SPOT GRADE & SURFACE CONTOUR	x 7208.00 ----- 7292 T&G
PROPOSED SPOT GRADE & SURFACE CONTOUR	6400.0 --- 7270 FG --- 7276
PROPOSED ELEVATIONS AT TOP & BOTTOM OF WALL	50.0 TW 46.8 BW (FG AT TOE)
SOIL EVALUATION TEST PIT	1012-2
PERC TEST	1012-A
PROPERTY LINE (COLOR VARIES)	---
SETBACK LINE	---
EASEMENT LIMIT	---
EX UNDERGROUND GAS LINE	---
EX UNDERGROUND POWER LINE	---
EX OVERHEAD WIRE	---
EX UNDERGROUND COMMUNICATIONS	---
EX UNDERGROUND WATER LINE	---
EX SANITARY SEWER LINE	---
WETLAND TO BE FILLED	▨

SITE DATA

PARCEL AREA: 1.25 ± AC  
 ZONING DISTRICT: RURAL RESIDENTIAL  
 PROPOSED USE: SINGLE FAMILY RESIDENCE  
 WATER SUPPLY: MOUNTAIN REGIONAL WATER CO.  
 SEWAGE DISPOSAL: SBWRD

ELEVATION DATUM

LOCAL DATUM (APPROXIMATE MEAN SEA LEVEL)

QUANTITIES

PROPOSED WETLAND FILL AREA ON LOT: 0.49 ACRES  
 PROPOSED WETLAND FILL VOLUME: 1,980 CUBIC YARDS (BELOW EX GRADE)  
 1,580 CUBIC YARDS (ABOVE EX GRADE)  
 3,560 CUBIC YARDS = TOTAL

REGULATORY NOTES

- AT LEAST TWO FULL BUSINESS DAYS PRIOR TO COMMENCEMENT OF ANY WORK, CALL 811 FOR UNDERGROUND UTILITY MARKING. ALSO, PROVIDE AT LEAST THREE FULL BUSINESS DAYS NOTICE TO APPROPRIATE FEDERAL, STATE, COUNTY, AND MUNICIPAL DEPARTMENTS, UTILITY AND IRRIGATION COMPANIES, AND UTILITY DISTRICTS BEFORE COMMENCING ANY WORK IN THE FIELD.
- COORDINATE AND OBTAIN ALL CONSTRUCTION PERMITS REQUIRED BY REGULATORY AUTHORITIES.
- PRIOR TO COMMENCEMENT OF ANY WORK, REVIEW AND FULLY UNDERSTAND ALL CONSTRUCTION REQUIREMENTS, CONDITIONS, AND LIMITATIONS IMPOSED BY PERMITS AND APPROVALS ISSUED BY REGULATORY AUTHORITIES.
- THE SUBJECT PROPERTY IS NOT LOCATED WITHIN A SPECIAL FLOOD HAZARD AREA, AS DEFINED BY FEMA. SEE FEMA FLOOD INSURANCE RATE MAP, COMMUNITY PANEL NO. 49043C 0909C, EFFECTIVE DATE MARCH 16, 2006.

ABBREVIATIONS

ACP	ASPHALT CONCRETE PAVEMENT
BLDG	BUILDING
CB	CATCH BASIN
CFS	CUBIC FEET PER SECOND
CIP	CAST-IN-PLACE
CL	CENTERLINE
CMH	COMMUNICATIONS MANHOLE
CMP	CORRUGATED METAL PIPE
CMU	CONCRETE MASONRY UNIT
CO	CLEANOUT
COMM	COMMUNICATIONS
DIA	DIAMETER
DMH	DRAIN MANHOLE
EG	EXISTING GRADE
EL	ELEVATION
EMH	ELECTRIC MANHOLE
ESHW	ESTIMATED SEASONAL HIGH GROUNDWATER
EX	EXISTING
FDN	FOUNDATION
FG	FINISH GRADE
FRP	FIBERGLASS REINFORCED PLASTIC
GPM	GALLONS PER MINUTE
GW	GROUNDWATER
HDCI	HEAVY DUTY CAST IRON
HDPE	HIGH DENSITY POLYETHYLENE
HP	HIGH POINT
ID	INSIDE DIAMETER
INT	INTERSECTION
INV	INVERT
LD	LONGEST DIMENSION
LF	LINEAR FEET
LOD	LIMIT OF DISTURBANCE
LP	LOW POINT
MDD	MAXIMUM DRY DENSITY
MEG	MATCH EXISTING GRADE
MUTCD	MANUAL ON UNIFORM TRAFFIC CONTROL DEVICES
OD	OUTSIDE DIAMETER
PC	POINT OF CURVATURE
PCC	PORLAND CEMENT CONCRETE
PE	PLAIN END
PJDI	PUSH-ON JOINT DUCTILE IRON
PRC	PRECAST REINFORCED CONCRETE
PVC	POLYVINYL CHLORIDE, POINT OF VERTICAL CURVATURE
PVI	POINT OF VERTICAL INTERSECTION
PVT	POINT OF VERTICAL TANGENCY
RCP	REINFORCED CONCRETE PIPE
S	SLOPE
SBED	STREAM BED
SD	STORM DRAIN
SMH	SEWER MANHOLE
SS	SANITARY SEWER, STAINLESS STEEL
TBC	TOP BACK OF CURB
TC	TOP OF CONCRETE
TO	TOP OF
TP	TOP OF PAVEMENT
TW	TOP OF WALL
TYP	TYPICAL
UD	UNDERDRAIN
UP	UTILITY POLE
WMH	WATER MANHOLE
WS	WATER SURFACE

ABBREVIATIONS - AGENCY

COE	US ARMY CORPS OF ENGINEERS
FEMA	FEDERAL EMERGENCY MANAGEMENT AGENCY
PMC	PARK CITY MUNICIPAL CORPORATION
RMF	ROCKY MOUNTAIN POWER
SBWRD	SNYDERVILLE BASIN WATER RECLAMATION DISTRICT
SCCH	SUMMIT COUNTY ENVIRONMENTAL HEALTH
UDOT	UTAH DEPARTMENT OF TRANSPORTATION
WCEH	WASATCH COUNTY ENVIRONMENTAL HEALTH

REFERENCES

- SEE PLAN ENTITLED "TOPOGRAPHIC SURVEY" BY ALTA ENGINEERING, INC., DATED 9.24.2015.
- SEE PLAN ENTITLED "LOT LINE ADJUSTMENT, LOTS 5 & 13, TREASURE MOUNTAIN RANCHES, (PARCEL PP-87-C-1-A) BY ALTA ENGINEERING, INC., DATED 9.24.2015.

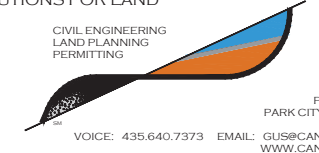
DRAWING ISSUED FOR

- PLANNING     CONSTRUCTION  
 PERMIT     CONSTRUCTION RECORD

THIS DRAWING MAY NOT SHOW CONSTRUCTION DETAILS AND SPECIFICATIONS FOR ALL PROPOSED IMPROVEMENTS, AND MAY NOT IDENTIFY ALL CONSTRUCTION WORK ITEMS AND AREAS OF CONTRACTOR JURISDICTION.

NO.	DATE	BY	CHK	REVISION DESCRIPTION

CANYON ENGINEERING SOLUTIONS FOR LAND



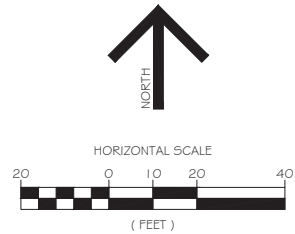
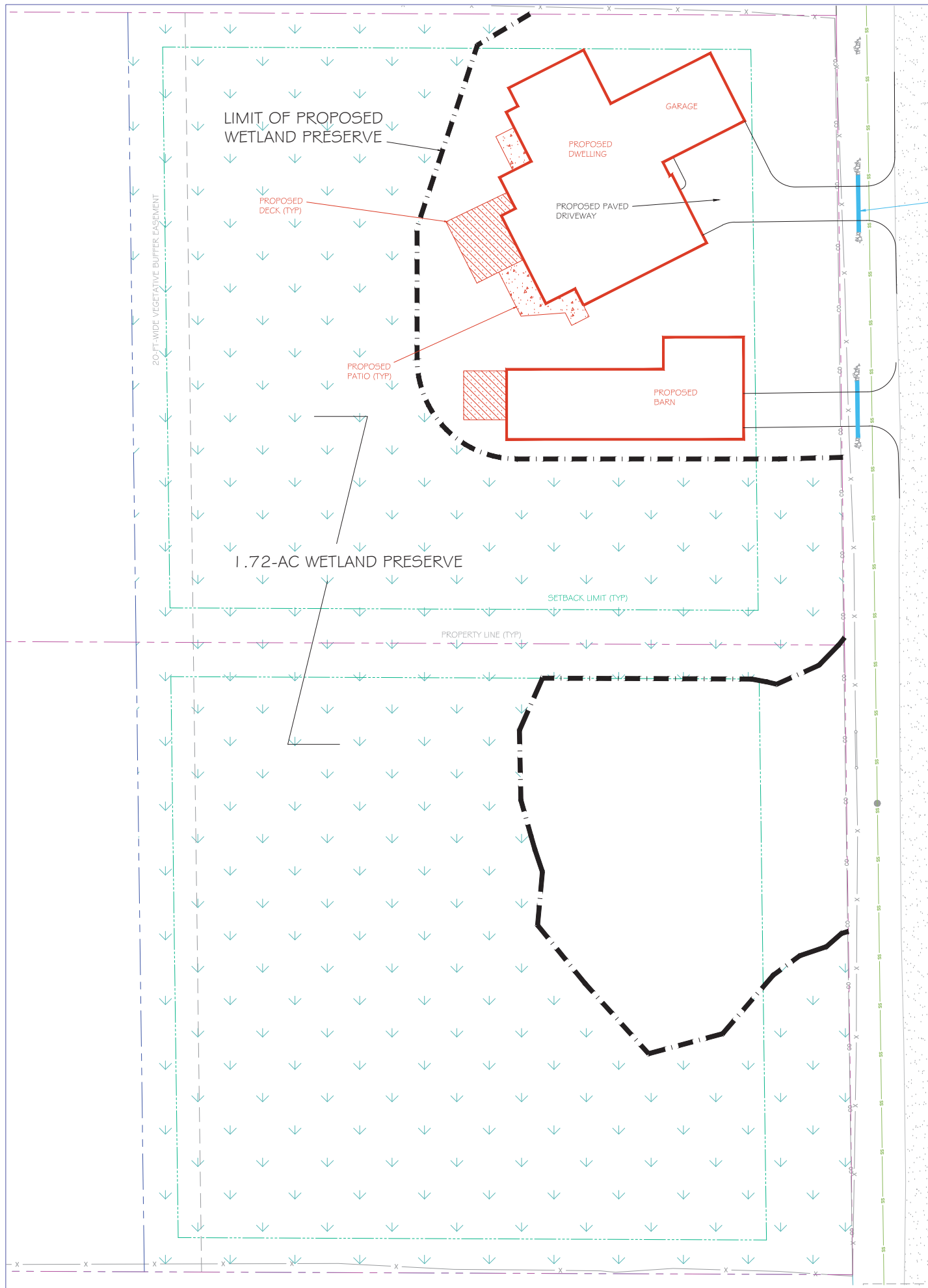
SINGLE FAMILY DWELLING

NORTH LOT SITE PLAN

TAX ID NO. PP-87-C-1A-1, PORTION OF SUMMIT COUNTY, UTAH

PREPARED FOR: MIKE CARROLL, RICHMOND, VA  
 FLS GRID LOCATION: S29 T15 R4E S1B4M

PRELIMINARY



**SITE DATA**

SITE AREA: 2.50 ± AC  
 ZONING DISTRICT: RURAL RESIDENTIAL  
 PROPOSED USE: RESIDENTIAL  
 WATER SUPPLY: MOUNTAIN REGIONAL WATER CO.  
 SEWAGE DISPOSAL: SBWRD

**ELEVATION DATUM**

LOCAL DATUM (APPROXIMATE MEAN SEA LEVEL)

**REGULATORY NOTES**

1. AT LEAST TWO FULL BUSINESS DAYS PRIOR TO COMMENCEMENT OF ANY WORK, CALL 811 FOR UNDERGROUND UTILITY MARKING. ALSO, PROVIDE AT LEAST THREE FULL BUSINESS DAYS NOTICE TO APPROPRIATE FEDERAL, STATE, COUNTY, AND MUNICIPAL DEPARTMENTS, UTILITY AND IRRIGATION COMPANIES, AND UTILITY DISTRICTS BEFORE COMMENCING ANY WORK IN THE FIELD.
2. COORDINATE AND OBTAIN ALL CONSTRUCTION PERMITS REQUIRED BY REGULATORY AUTHORITIES.
3. PRIOR TO COMMENCEMENT OF ANY WORK, REVIEW AND FULLY UNDERSTAND ALL CONSTRUCTION REQUIREMENTS, CONDITIONS, AND LIMITATIONS IMPOSED BY PERMITS AND APPROVALS ISSUED BY REGULATORY AUTHORITIES.
4. THE SUBJECT PROPERTY IS NOT LOCATED WITHIN A SPECIAL FLOOD HAZARD AREA, AS DEFINED BY FEMA. SEE FEMA FLOOD INSURANCE RATE MAP, COMMUNITY PANEL NO. 49043C 0909C, EFFECTIVE DATE MARCH 16, 2006.

**LEGEND**

- EXISTING SURFACE RUNOFF DIRECTION: - - - - ->
- PROPOSED SURFACE RUNOFF DIRECTION: - - - - ->
- EXISTING SPOT GRADE & SURFACE CONTOUR: x 7208.00 ----- 7292 T&G
- PROPOSED SPOT GRADE & SURFACE CONTOUR: -6400.0 --- 7270 FG --- 7276
- PROPOSED ELEVATIONS AT TOP & BOTTOM OF WALL: 50.0 TW 46.8 BW (FG AT TOE)
- SOIL EVALUATION TEST PIT: 1012-2
- PERC TEST: 1012-A
- PROPERTY LINE (COLOR VARIES): - - - - -
- SETBACK LINE: - - - - -
- EASEMENT LIMIT: - - - - -
- EX UNDERGROUND GAS LINE: - G -
- EX UNDERGROUND POWER LINE: - E -
- EX OVERHEAD WIRE: - OHW -
- EX UNDERGROUND COMMUNICATIONS: - CO -
- EX UNDERGROUND WATER LINE: - W -
- EX SANITARY SEWER LINE: - SS -
- WETLAND TO BE PRESERVED: [Symbol]

**QUANTITIES**

PROPOSED WETLAND PRESERVE AREA = 1.72 ACRES

**ABBREVIATIONS**

- ACP ASPHALT CONCRETE PAVEMENT
- BLDG BUILDING
- CB CATCH BASIN
- CFS CUBIC FEET PER SECOND
- CIP CAST-IN-PLACE
- CL CENTERLINE
- CMH COMMUNICATIONS MANHOLE
- CMP CORRUGATED METAL PIPE
- CMU CONCRETE MASONRY UNIT
- CO CLEANOUT
- COMM COMMUNICATIONS
- DIA DIAMETER
- DMH DRAIN MANHOLE
- EG EXISTING GRADE
- EL ELEVATION
- EMH ELECTRIC MANHOLE
- ESHWV ESTIMATED SEASONAL HIGH GROUNDWATER
- EX EXISTING
- FDN FOUNDATION
- FLARED END
- FG FINISH GRADE
- FRP FIBERGLASS REINFORCED PLASTIC
- GPM GALLONS PER MINUTE
- GW GROUNDWATER
- HDCI HEAVY DUTY CAST IRON
- HDPE HIGH DENSITY POLYETHYLENE
- HP HIGH POINT
- ID INSIDE DIAMETER
- INT INTERSECTION
- INV INVERT
- LD LONGEST DIMENSION
- LF LINEAR FEET
- LOD LIMIT OF DISTURBANCE
- LP LOW POINT
- MDD MAXIMUM DRY DENSITY
- MEG MATCH EXISTING GRADE
- MUTCD MANUAL ON UNIFORM TRAFFIC CONTROL DEVICES
- OD OUTSIDE DIAMETER
- PC POINT OF CURVATURE
- PCC PORTLAND CEMENT CONCRETE
- PE FLAIN END
- PJDI PUSH-ON JOINT DUCTILE IRON
- PRC PRECAST REINFORCED CONCRETE
- PVC POLYVINYL CHLORIDE, POINT OF VERTICAL CURVATURE
- PVI POINT OF VERTICAL INTERSECTION
- PVT POINT OF VERTICAL TANGENCY
- RCP REINFORCED CONCRETE PIPE
- S SLOPE
- SBED STREAM BED
- SD STORM DRAIN
- SMH SEWER MANHOLE
- SS SANITARY SEWER, STAINLESS STEEL
- TBC TOP BACK OF CURB
- TC TOP OF CONCRETE
- TO TOP OF
- TP TOP OF PAVEMENT
- TW TOP OF WALL
- TYP TYPICAL
- UD UNDERDRAIN
- UP UTILITY POLE
- WMH WATER MANHOLE
- WS WATER SURFACE

**ABBREVIATIONS - AGENCY**

- COE US ARMY CORPS OF ENGINEERS
- FEMA FEDERAL EMERGENCY MANAGEMENT AGENCY
- PCMC PARK CITY MUNICIPAL CORPORATION
- RMF ROCKY MOUNTAIN POWER
- SBWRD SNYDERVILLE BASIN WATER RECLAMATION DISTRICT
- SCCH SUMMIT COUNTY ENVIRONMENTAL HEALTH
- UDOT UTAH DEPARTMENT OF TRANSPORTATION
- WCEH WASATCH COUNTY ENVIRONMENTAL HEALTH

**REFERENCES**

1. SEE PLAN ENTITLED "TOPOGRAPHIC SURVEY" BY ALTA ENGINEERING, INC., DATED 9.24.2015.
2. SEE PLAN ENTITLED "LOT LINE ADJUSTMENT, LOTS 5 & 13, TREASURE MOUNTAIN RANCH #1, PARCEL PP-87-C-1-A" BY ALTA ENGINEERING, INC., DATED 9.24.2015.

**DRAWING ISSUED FOR**

- PLANNING  CONSTRUCTION
- PERMIT  CONSTRUCTION RECORD

THIS DRAWING MAY NOT SHOW CONSTRUCTION DETAILS AND SPECIFICATIONS FOR ALL PROPOSED IMPROVEMENTS, AND MAY NOT IDENTIFY ALL CONSTRUCTION WORK ITEMS AND AREAS OF CONTRACTOR JURISDICTION.

NO.	DATE	BY	CHK	REVISION DESCRIPTION

**CANYON ENGINEERING SOLUTIONS FOR LAND**

CIVIL ENGINEERING  
LAND PLANNING  
PERMITTING

PO BOX 982131  
PARK CITY, UTAH 84098  
VOICE: 435.640.7373 EMAIL: GUS@CANYONENG.COM WWW.CANYONENG.COM

SINGLE FAMILY DWELLINGS

**EXHIBIT PLAN  
PROPOSED WETLAND PRESERVE**

TAX ID NO. PP-87-C-1A-1  
SUMMIT COUNTY, UTAH

PREPARED FOR: MIKE CARROLL RICHMOND, VA  
 FLS GRID LOCATION: S29 T15 R4E S14M

PRELIMINARY