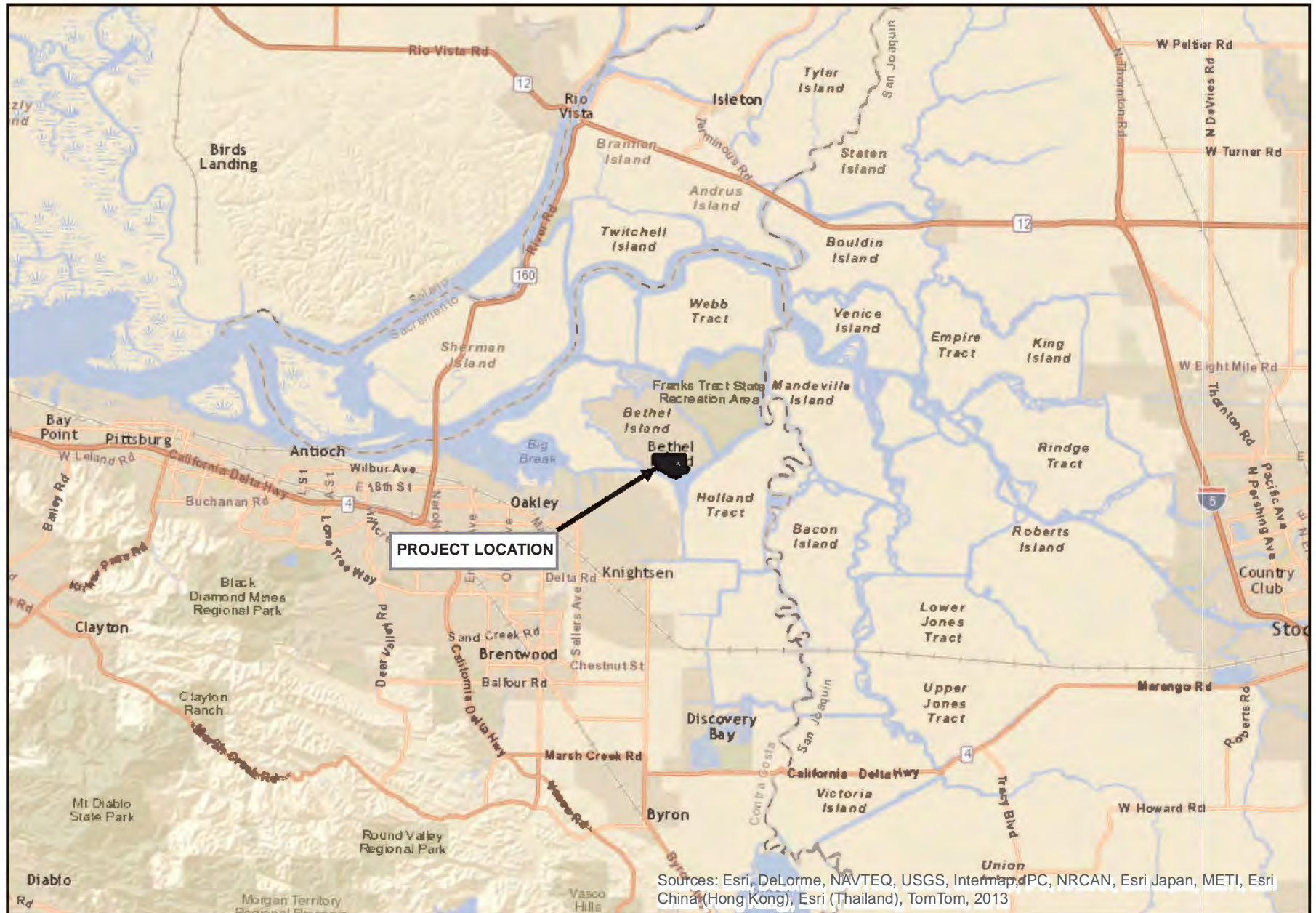


Source: ESRI World Street Map



Sources: Esri, DeLorme, NAVTEQ, USGS, Intermap, iPC, NRCAN, Esri Japan, METI, Esri China (Hong Kong), Esri (Thailand), TomTom, 2013

DELTA COVES DOCK RECONFIGURATION PROJECT

Regional Map

GLENN LUKOS ASSOCIATES

Exhibit 1



Adapted from USGS Brentwood & Jersey Island, CA quadrangles



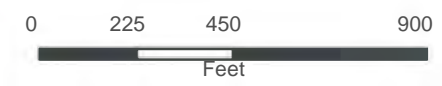
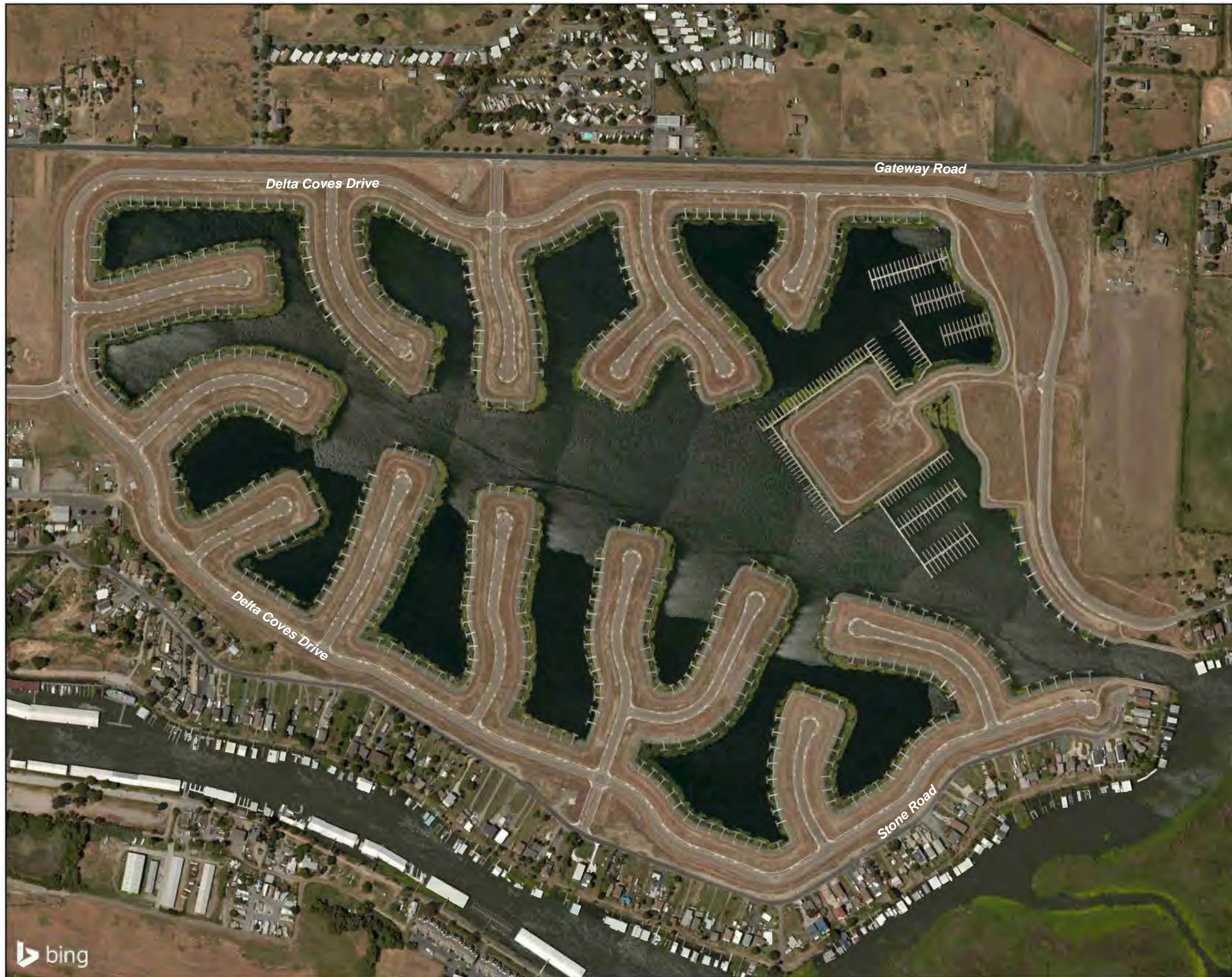
DELTA COVES DOCK RECONFIGURATION PROJECT

Vicinity Map

GLENN LUKOS ASSOCIATES

Exhibit 2





1 inch = 450 feet

DELTA COVES

Existing Development Map

GLENN LUKOS ASSOCIATES

Exhibit 3





Photograph 1: View facing northeast depicting existing docks.



Photograph 2: View depicting an existing dock, a portion of a broken dock that has washed onto the riprap, and invasive Brazilian waterweed (*Egeria densa*).

**DELTA COVES DOCK
RECONFIGURATION PROJECT**

Site Photographs

GLENN LUKOS ASSOCIATES



Exhibit 5



Photograph 3: View facing southwest depicting existing docks.

GLENN LUKOS ASSOCIATES



Exhibit 5



Photograph 4: View facing west depicting existing docks.

**DELTA COVES DOCK
RECONFIGURATION PROJECT**

Site Photographs