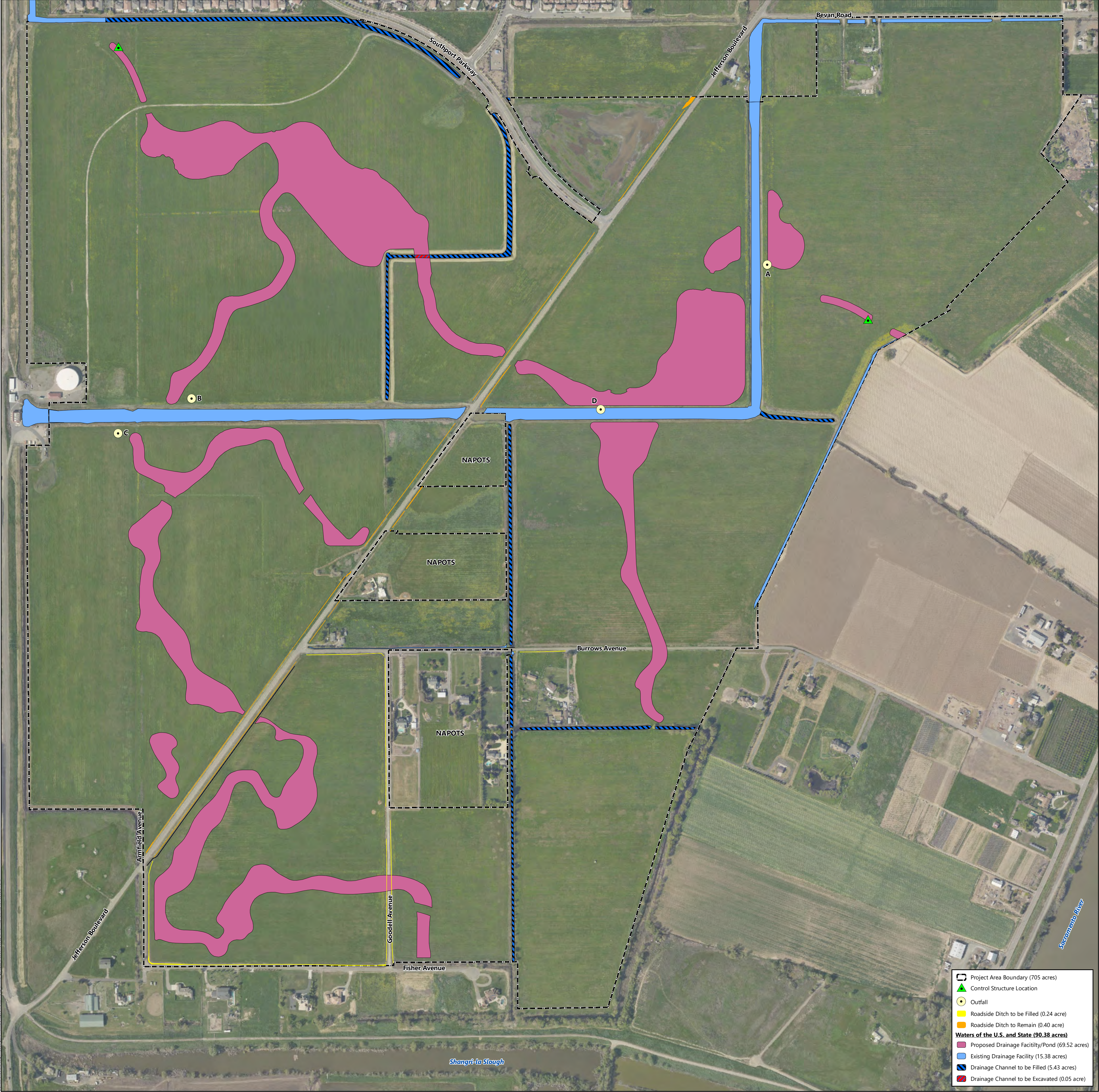


Source: United States Geologic Survey, 2015.  
 "Sacramento West, California" 7.5-Minute Topographic Quadrangle  
 Longitude -121.571766, Latitude 38.51572  
 Sections 19-21, and 28- 32, Township 8 North, Range 4 East

Applicant: ASB Southport II, LLC.  
 Yarbrough Southport  
 West Sacramento, Yolo County, California



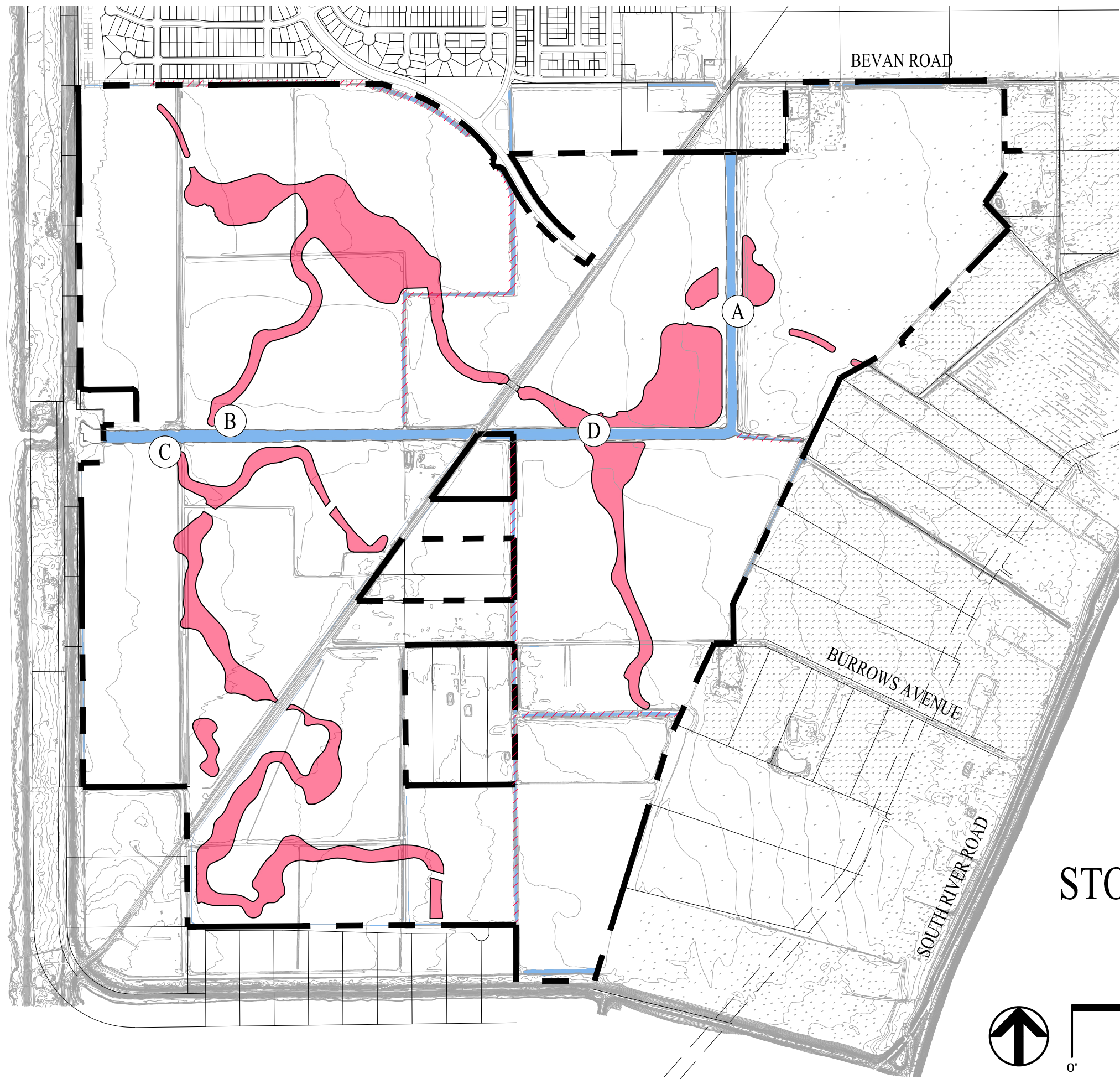




**Figure 2**  
**Impacts to Waters of the U.S. and State**

Applicant: ASB Southport II, LLC  
Yarborough Southport  
West Sacramento, Yolo County, California



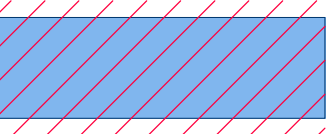





# OUTFALL SUMMARY

- (A) OUTFALL A
- (B) OUTFALL B
- (C) OUTFALL C
- (D) OUTFALL D

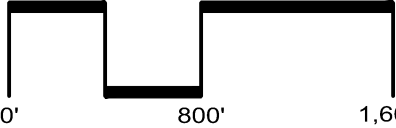
## LEGEND:

-  PROJECT BOUNDARY (744± AC)
-  EXISTING DRAINAGE FACILITIES
-  DRAINAGE CHANNEL TO BE FILLED
-  PROPOSED DRAINAGE FACILITIES

# STORM DRAIN OUTFALLS

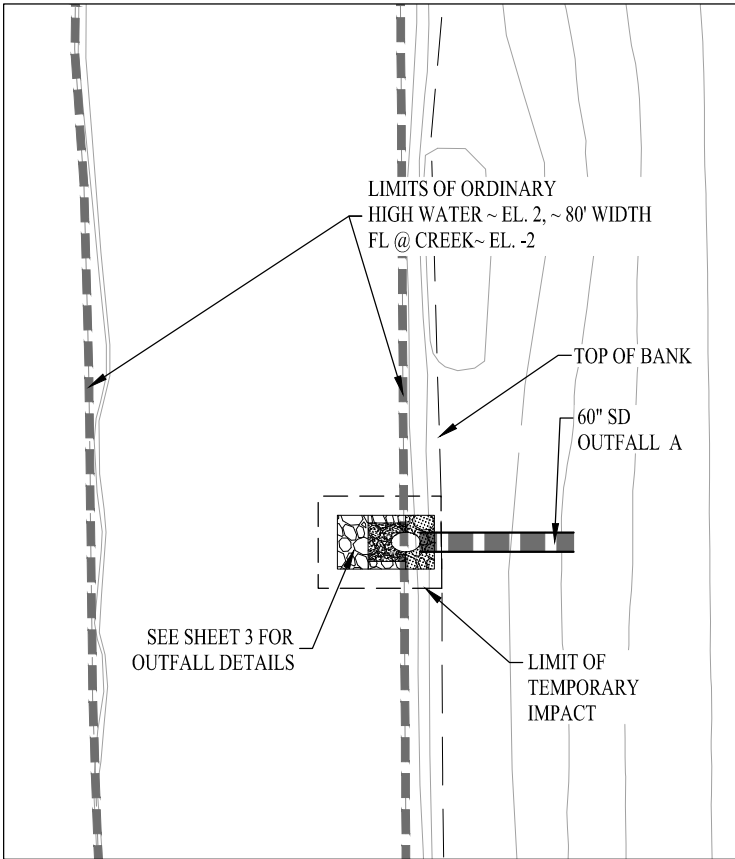
## YARBROUGH

CITY OF WEST SACRAMENTO YOLO COUNTY CALIFORNIA  
SCALE: 1"=50' DATE: MAY 2020



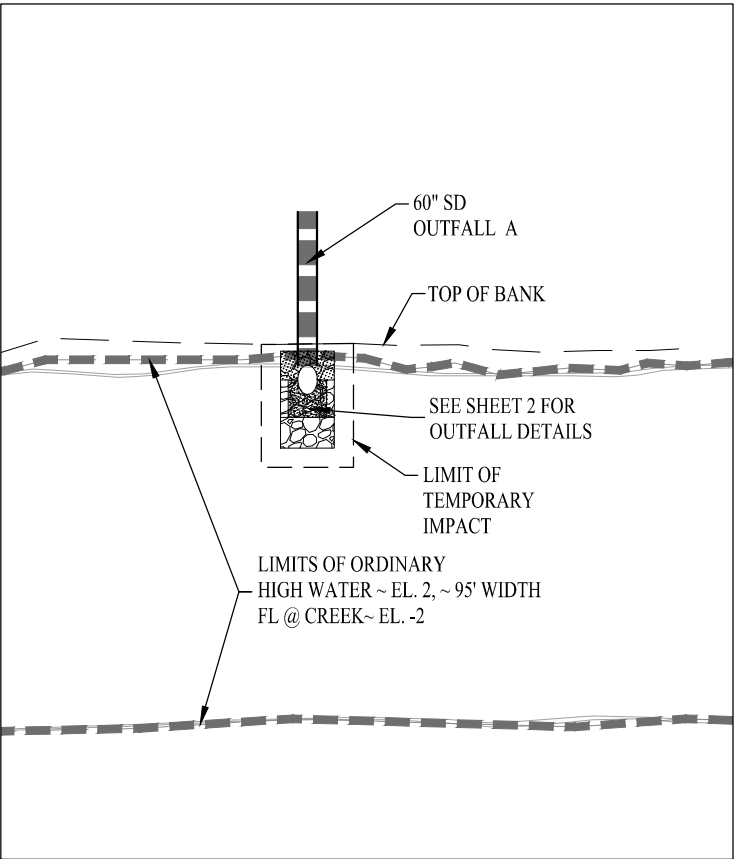
SAN RAMON (925) 866-0322  
SACRAMENTO (916) 375-1877  
WWW.CBANDG.COM  
CIVIL ENGINEERS ■ SURVEYORS ■ PLANNERS

SHEET NO.  
**1**  
OF 3 SHEETS



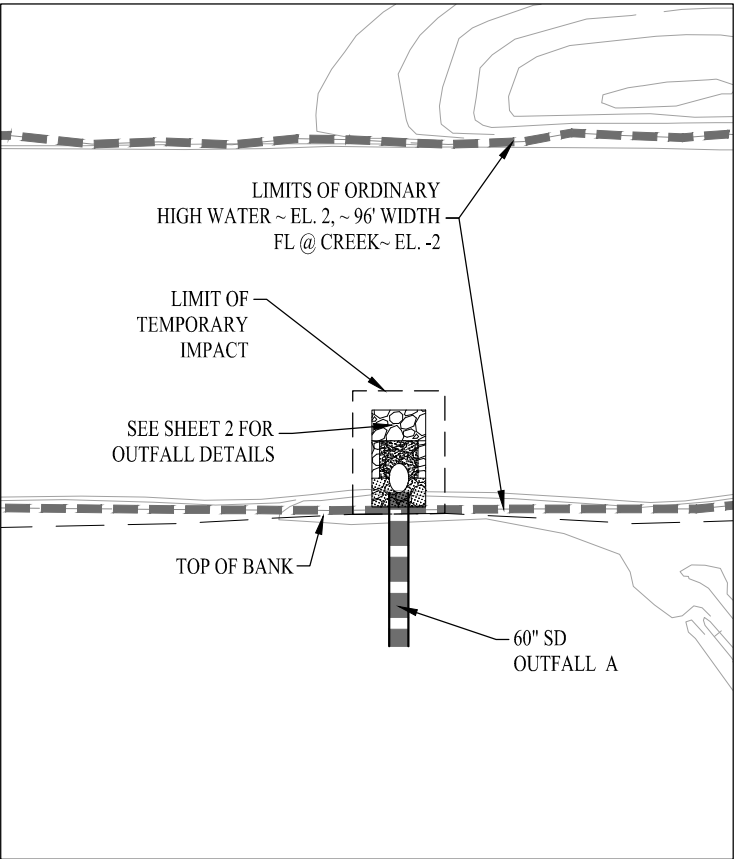
OUTFALL IMPACTS		PERMANENT	TEMPORARY
BELOW TOP OF BANK	SF	354	414
AREA BELOW ORDINARY HIGH WATER MARK	SF	249	289
VOLUME OF FILL BELOW TOP OF BANK	CY	52	—
VOLUME OF FILL BELOW HIGH WATER MARK	CY	37	—

OUTFALL A



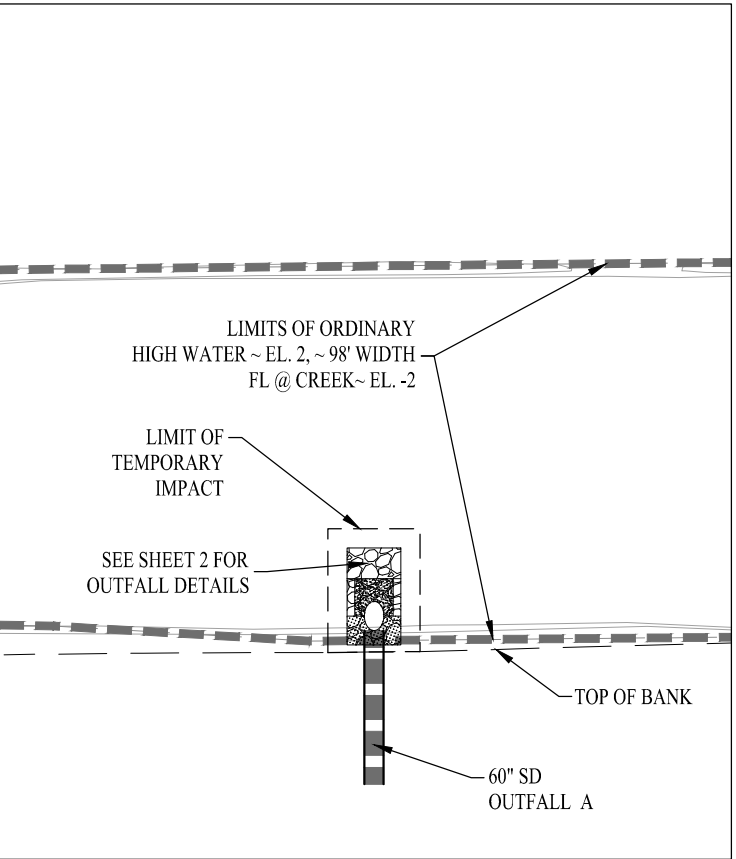
OUTFALL IMPACTS		PERMANENT	TEMPORARY
BELOW TOP OF BANK	SF	354	414
AREA BELOW ORDINARY HIGH WATER MARK	SF	249	289
VOLUME OF FILL BELOW TOP OF BANK	CY	52	—
VOLUME OF FILL BELOW HIGH WATER MARK	CY	37	—

OUTFALL B



OUTFALL IMPACTS		PERMANENT	TEMPORARY
BELOW TOP OF BANK	SF	354	414
AREA BELOW ORDINARY HIGH WATER MARK	SF	249	289
VOLUME OF FILL BELOW TOP OF BANK	CY	52	—
VOLUME OF FILL BELOW HIGH WATER MARK	CY	37	—

OUTFALL C



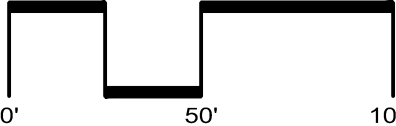
OUTFALL IMPACTS		PERMANENT	TEMPORARY
BELOW TOP OF BANK	SF	354	414
AREA BELOW ORDINARY HIGH WATER MARK	SF	249	289
VOLUME OF FILL BELOW TOP OF BANK	CY	52	—
VOLUME OF FILL BELOW HIGH WATER MARK	CY	37	—

OUTFALL D

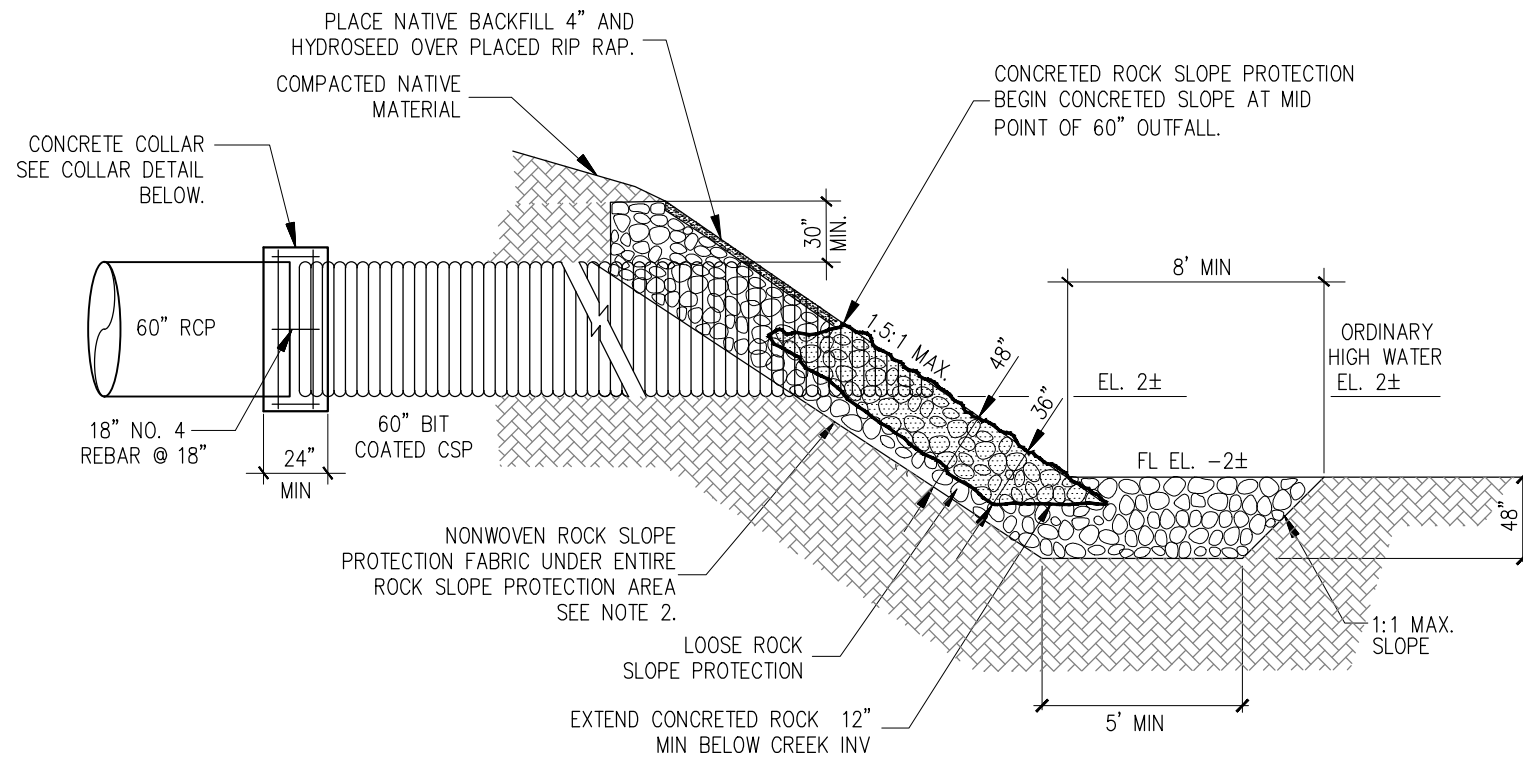
NOTE:  
THE TEMPORARY IMPACT AREA DOES NOT INCLUDE THE PERMANENT IMPACT AREA SQUARE FOOTAGE.  
  
THE PERMANENT AREA BELOW TOP OF BANK INCLUDES THE AREA OF FILL BELOW THE HIGH WATER MARK.  
  
THE VOLUME OF FILL BELOW TOP OF BANK INCLUDES THE VOLUME OF FILL BELOW THE HIGH WATER MARK.

STORM DRAIN OUTFALLS  
YARBROUGH

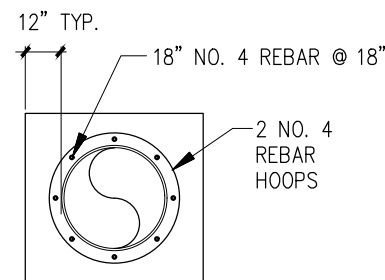
CITY OF WEST SACRAMENTO    YOLO COUNTY    CALIFORNIA  
SCALE: 1"=50'    DATE: MAY 2020



SAN RAMON (925) 866-0322  
SACRAMENTO (916) 375-1877  
WWW.CBANDG.COM  
CIVIL ENGINEERS ■ SURVEYORS ■ PLANNERS



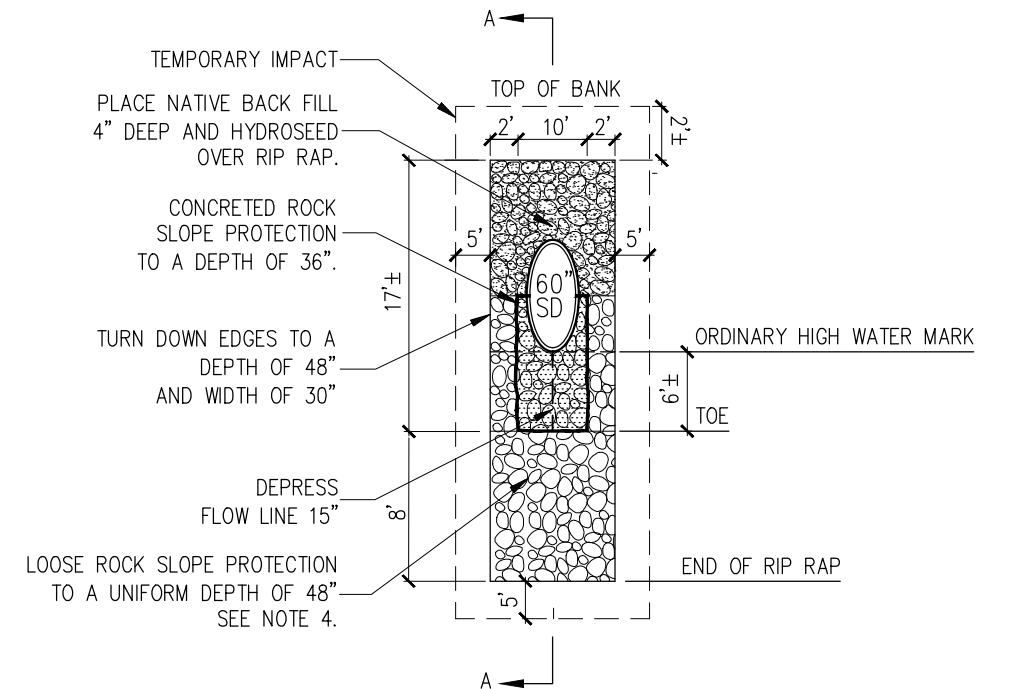
**SECTION A-A**  
NOT TO SCALE



**COLLAR DETAIL**

**NOTES:**

1. CONCRETED-ROCK SLOPE PROTECTION AND LOOSE ROCK SLOPE PROTECTION SHALL CONFORM TO THE STATE STANDARD SPECIFICATIONS. UNLESS OTHERWISE SPECIFIED, THE ROCK CLASS SHALL BE ¼ TON.
2. ROCK SLOPE PROTECTION FABRIC SHALL COMPLY WITH STATE STANDARD SPECIFICATIONS 72-2 "ROCK SLOPE PROTECTION". LAP ROCK SLOPE PROTECTION FABRIC IN ACCORDANCE WITH THE MANUFACTURER'S REQUIREMENTS.
3. CONCRETE SHALL BE PLACED IN ACCORDANCE WITH STATE STANDARD SPECIFICATIONS.
4. ALL LOOSE ROCK SLOPE PROTECTION SHALL BE BACKFILLED WITH NATIVE SOIL.



**PLAN**  
NOT TO SCALE

# OUTFALL A

## YARBROUGH

CITY OF WEST SACRAMENTO YOLO COUNTY CALIFORNIA

DATE: MAY 2020



CIVIL ENGINEERS ■ SURVEYORS ■ PLANNERS

SAN RAMON (925) 866-0322  
SACRAMENTO (916) 375-1877  
WWW.CBANDG.COM

SHEET NO.

3

OF 6 SHEETS