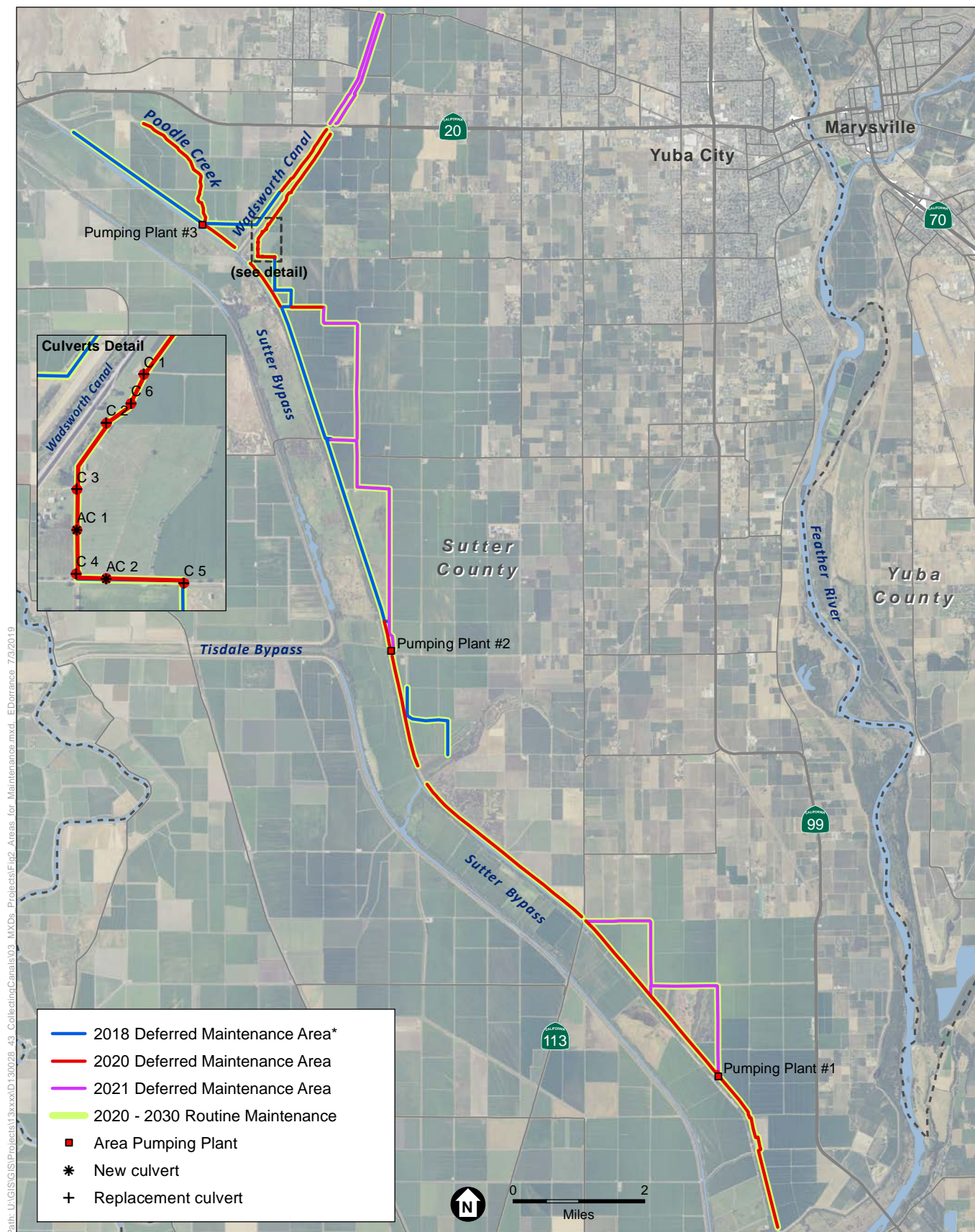




SOURCE: Esri, 2015; ESA, 2019

Sutter Collecting Canals and Culvert Maintenance

Figure 1
Regional Location



SOURCE: USDA, 2016; ESA, 2019

* Identifies sections of Collecting Canals which underwent deferred maintenance in 2018 under authorization pursuant to Regional General Permit 8

Sutter Collecting Canals and Culvert Maintenance

Figure 2
Project Location and Elements



SOURCE: USDA, 2016; ESA, 2019

Sutter Collecting Canals and Culvert Maintenance

Figure 3
Culvert Removal and Staging Area Locations