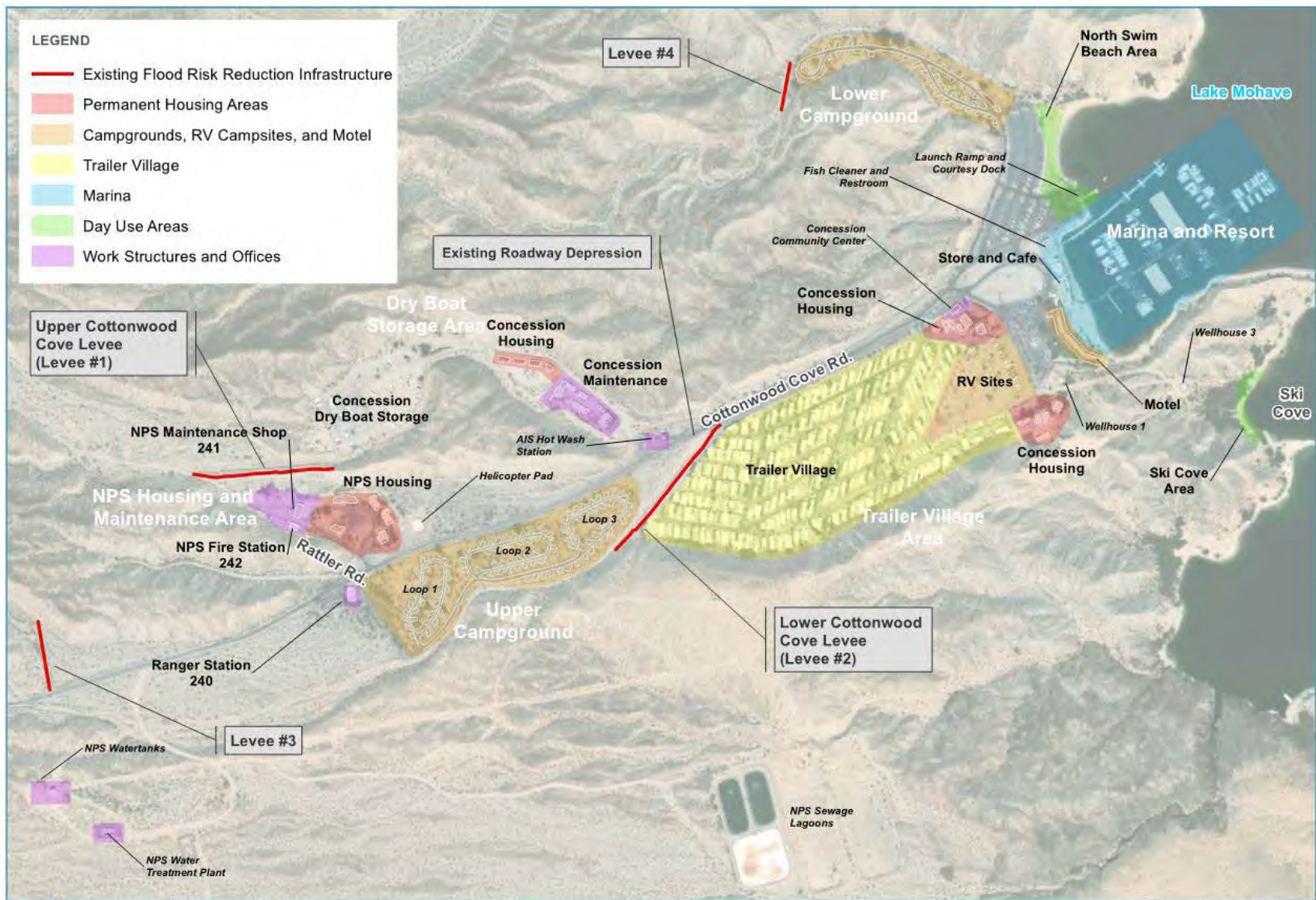


Cottonwood Cove



**COTTONWOOD COVE**  
**JURISDICTIONAL DELINEATION REPORT**  
**FIGURE 1: PARK MAP**

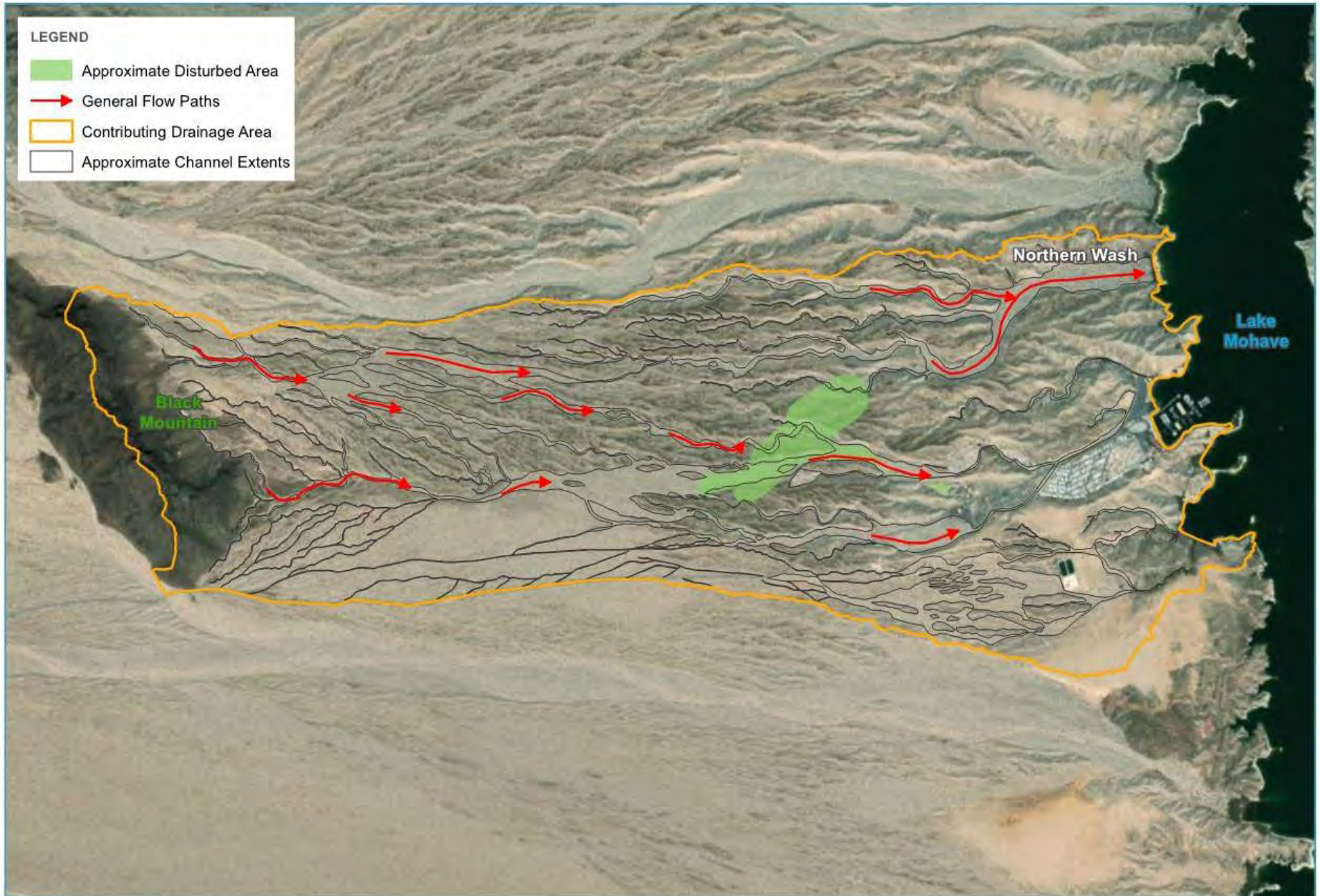
SPK-2019-00870; Figure 1  
 Vicinity and Location



COTTONWOOD COVE  
 JURISDICTIONAL DELINEATION REPORT  
 FIGURE 2: DEVELOPED AREA COMPONENTS

PATH: \\DEN-GIS\SV1\GIS\DATA\PROJECTS\19171918\_NPS\_LAKE\_COTTONWOOD\_DD\_CD\MAP\_DCS\JURISDICTIONAL\_DELINEATION\_REPORT2\_COMPONENTSMAP.MXD - USER: KRANNEY - DATE: 8/1/2019

SPK-2019-00870; Figure 2  
 Cottonwood Cove Developed Area &  
 Existing Flood Protection Structures



**LEGEND**

- Approximate Disturbed Area
- General Flow Paths
- Contributing Drainage Area
- Approximate Channel Extents



**COTTONWOOD COVE  
JURISDICTIONAL DELINEATION REPORT  
FIGURE 3: CONTRIBUTING DRAINAGE AREA**

PATH: I:\EN-GISSRV\GISDATA\PROJECTS\16171918\_NPS\_LAKE\_COTTONWOOD\_DD\_CD\MAP\_DOCS\JURISDICTIONAL\_DELINEATION\_REPORTS\DRAINAGEPATTERNS.MXD - USER: KRANNEY - DATE: 7/30/2019

SPK-2019-00870; Figure 3  
Project Drainage Area and  
Proposed Project Location

**LEGEND**

Approximate Survey Area

*Approximate Footprint of Interconnected Berm/Channel Diversion Structure*

**Impact Type**

Permanent

Temporary

**South Berm**

South Berm

South Berm

**North Berm**

North Berm

North Berm

**South Channel**

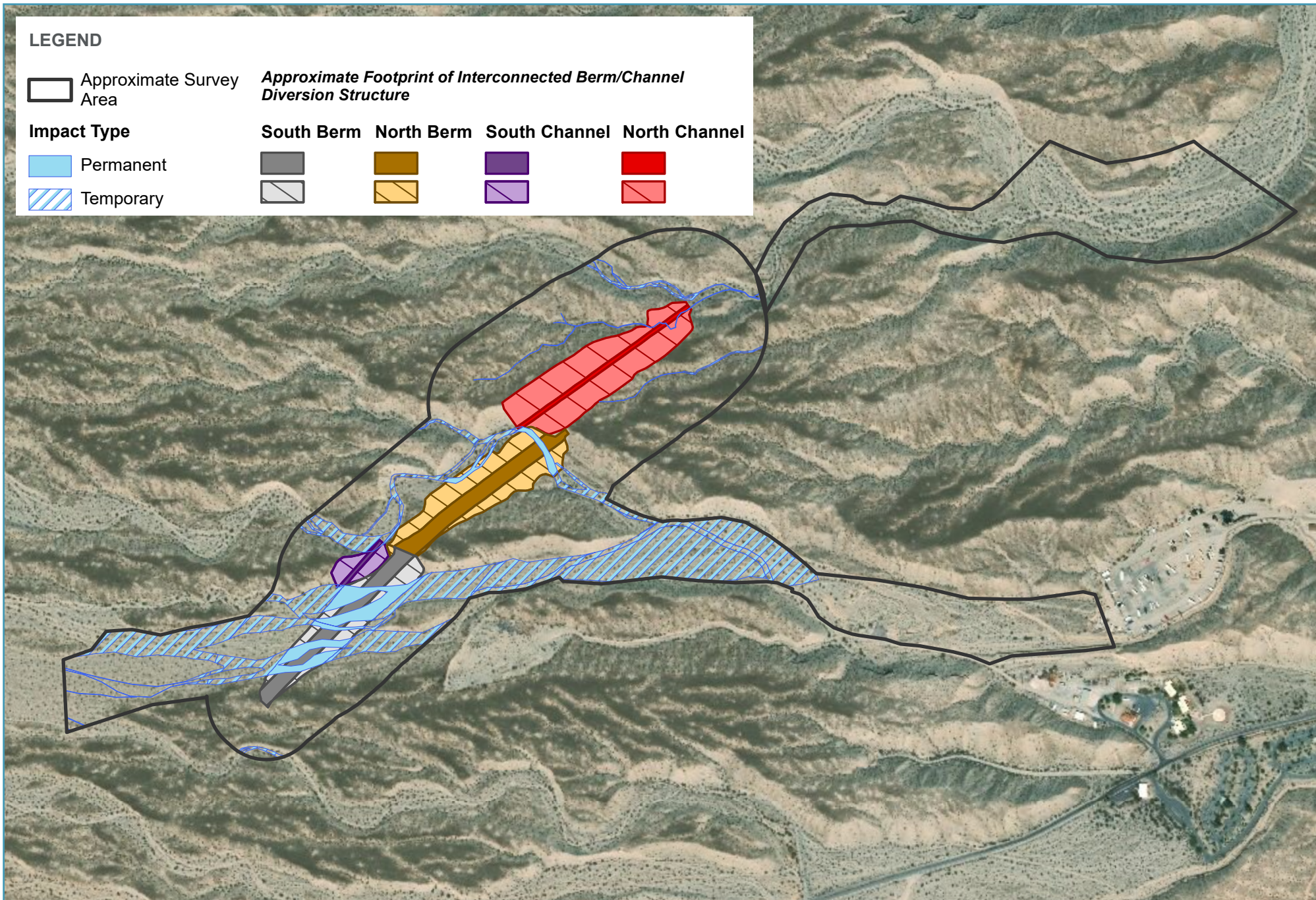
South Channel

South Channel

**North Channel**

North Channel

North Channel



**COTTONWOOD COVE FLOOD MITIGATION STRUCTURE**

SPK-2019-00870; Figure 4

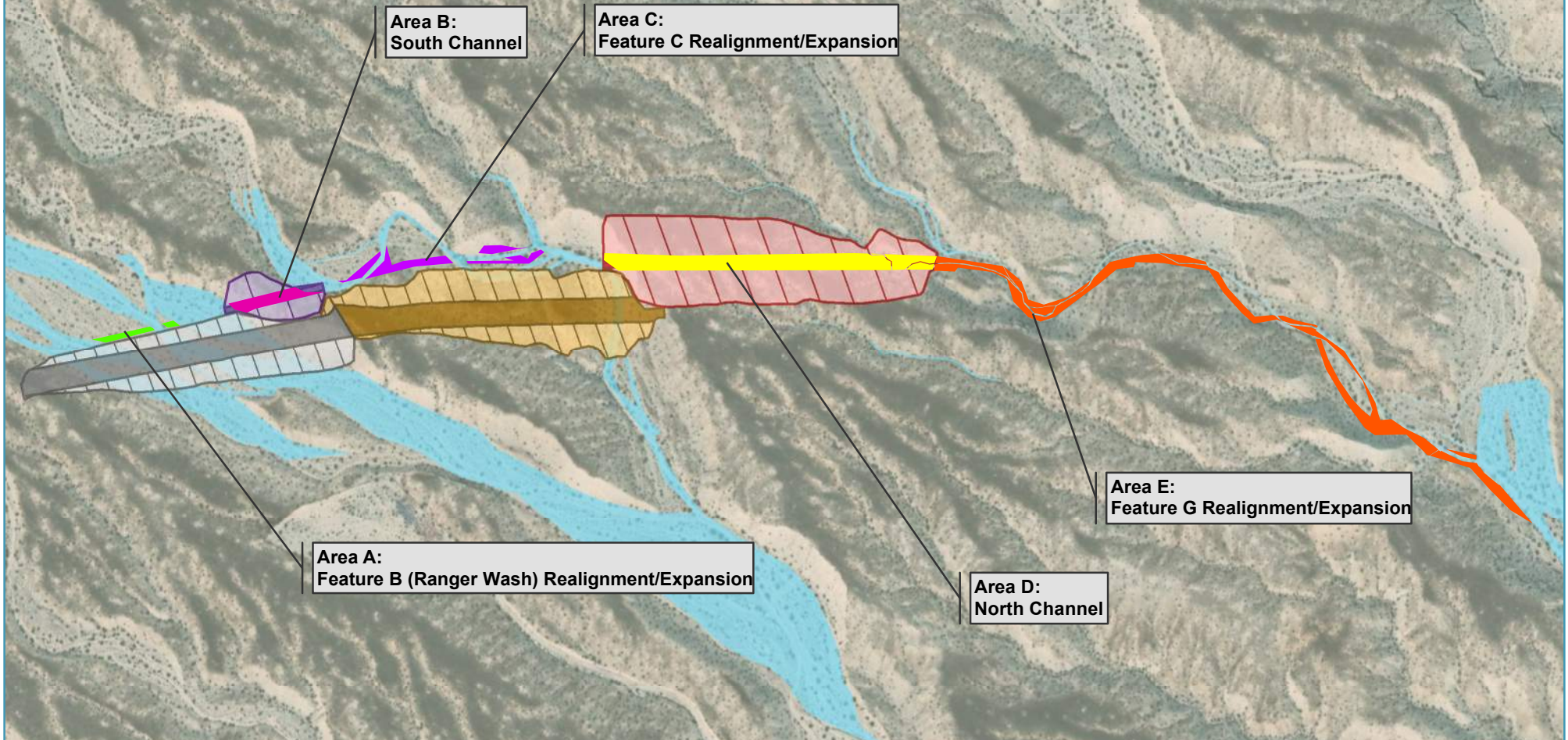
Impacts to Jurisdictional Aquatic Resources

**LEGEND**

 Potential Waters of the United States

*Approximate Footprint of Interconnected Berm/Channel Diversion Structure*

**South Berm   North Berm   South Channel   North Channel**



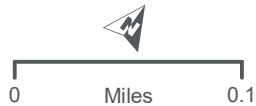
**Area B:**  
South Channel

**Area C:**  
Feature C Realignment/Expansion

**Area A:**  
Feature B (Ranger Wash) Realignment/Expansion

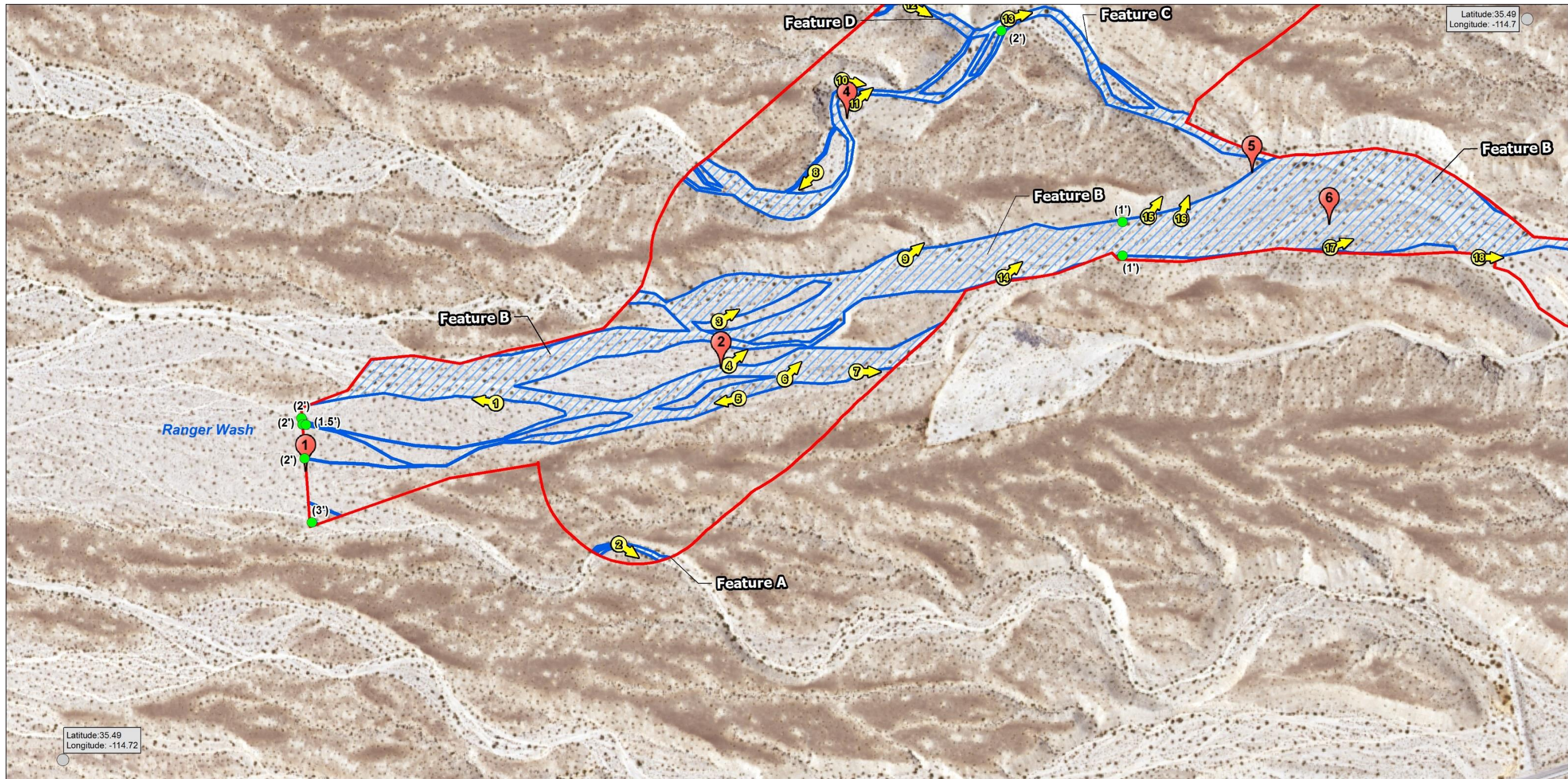
**Area E:**  
Feature G Realignment/Expansion

**Area D:**  
North Channel



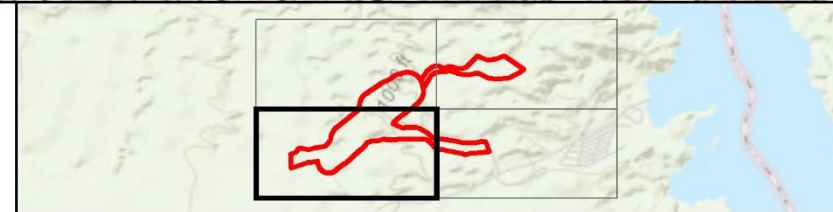
**COTTONWOOD COVE FLOOD MITIGATION STRUCTURE**

SPK-2019-00870; Figure 5  
Realigned Ephemeral Drainages  
Expansion of Jurisdictional Waters



**LEGEND**

- Jurisdictional Study Area (100.71 acres)
- Non-Wetland WOUS (23.64 acres)
- 📍 OHWM Datasheet Point
- 📍 Photo Point
- Field Measurement (width)
- A Feature Label

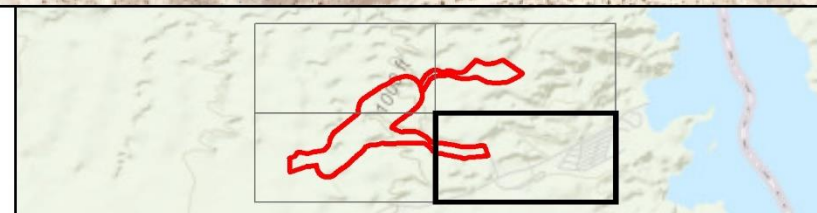


↑ 0 Feet 200  
 1 inch = 300 feet  
 Background: NAIP Digital Ortho Photo Image  
 National Agriculture (12/04/2017)  
 Date Prepared: 7/10/2019  
 Map Prepared by HDR

SPK-2019-00870; Figure 6  
 Jurisdictional Aquatic Resources  
 Features A, B, C and D



- LEGEND**
- Jurisdictional Study Area (100.71 acres)
  - Non-Wetland WOUS (23.64 acres)
  - OHWM Datasheet Point
  - Photo Point
  - Field Measurement (width)
  - Feature Label

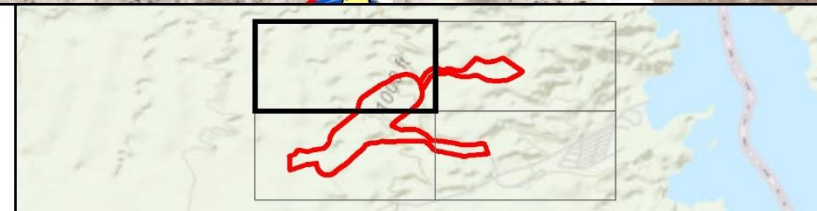


0 Feet 200  
1 inch = 300 feet  
Background: NAIP Digital Ortho Photo Image  
National Agriculture (12/04/2017)  
Date Prepared: 7/10/2019  
Map Prepared by HDR

SPK-2019-00870; Figure 7  
Jurisdictional Aquatic Resources  
Feature B



- LEGEND**
- Jurisdictional Study Area (100.71 acres)
  - Non-Wetland WOUS (23.64 acres)
  - 📍 OHWM Datasheet Point
  - ⚡ Photo Point
  - Field Measurement (width)
  - A Feature Label



↑ 0 Feet 200  
 1 inch = 300 feet  
Background: NAIP Digital Ortho Photo Image  
 National Agriculture (12/04/2017)  
 Date Prepared: 7/10/2019  
 Map Prepared by HDR

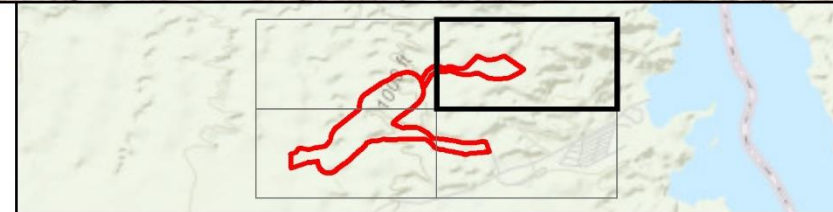
SPK-2019-00870; Figure 8  
 Jurisdictional Aquatic Resources  
 Features D, E, F and G





**LEGEND**

Jurisdictional Study Area (100.71 acres)	Non-Wetland WOUS (23.64 acres)	OHWM Datasheet Point
Photo Point	Field Measurement (width)	Feature Label



0 Feet 200  
1 inch = 300 feet

Background: NAIP Digital Ortho Photo Image  
National Agriculture (12/04/2017)  
Date Prepared: 7/10/2019  
Map Prepared by HDR

SPK-2019-00870; Figure 9  
Jurisdictional Aquatic Resources  
Feature F