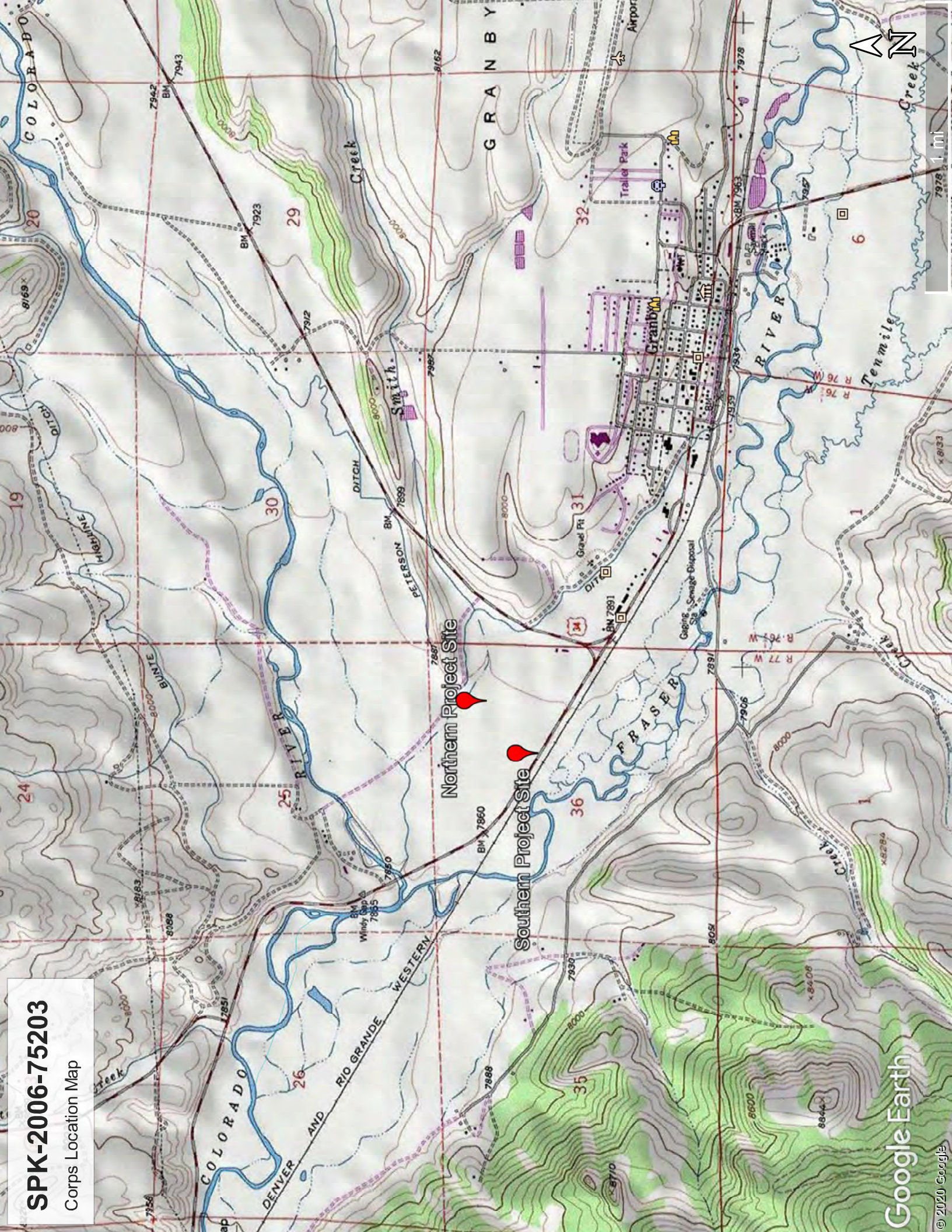


**SPK-2006-75203**

Corps Location Map

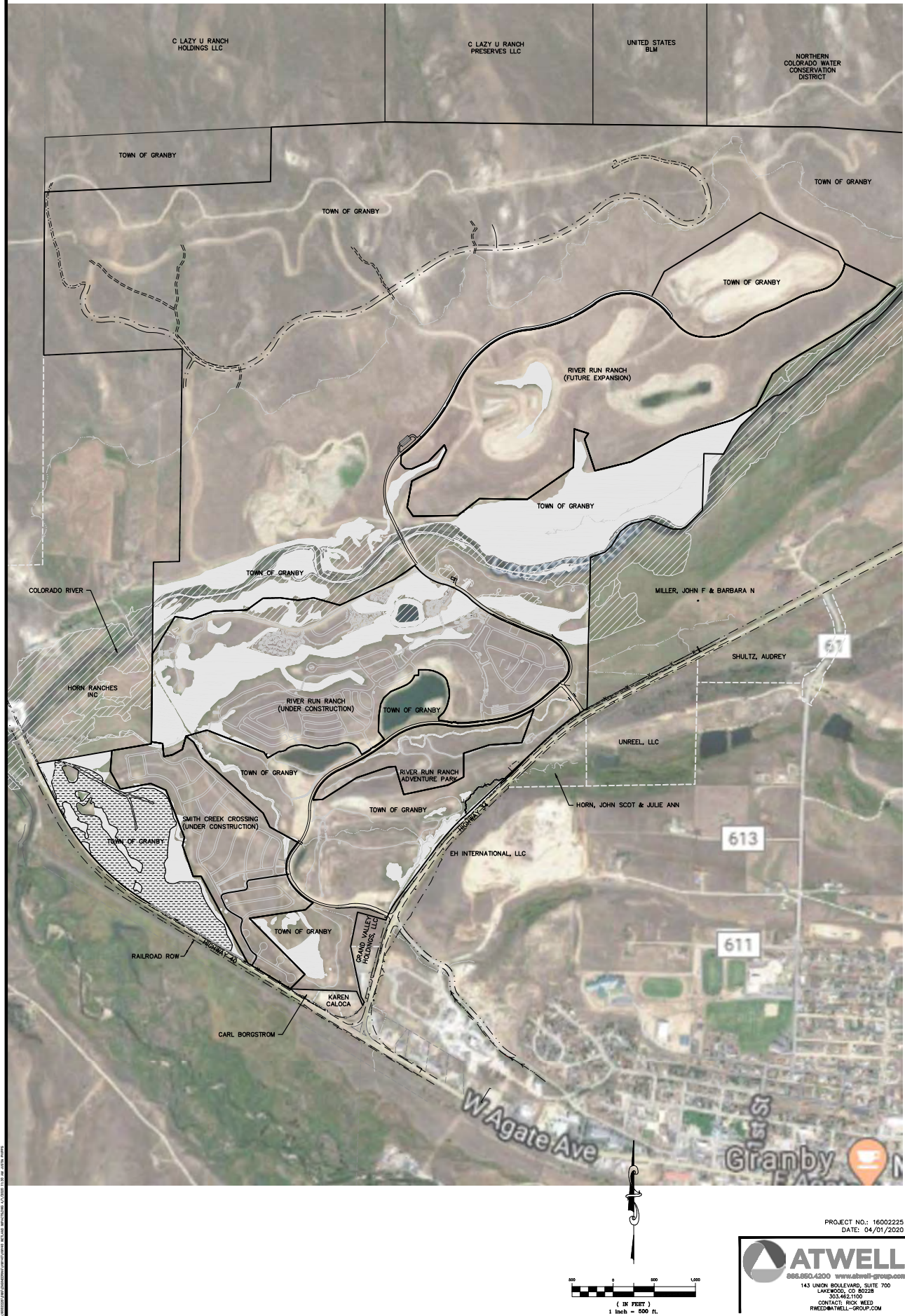




# SMITH CREEK CROSSING WETLAND IMPACT EXHIBITS

## PROPERTY MAP

SHEET 2 OF 5

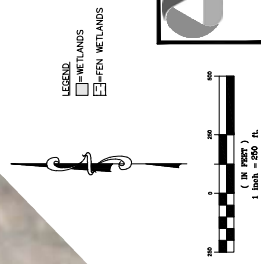
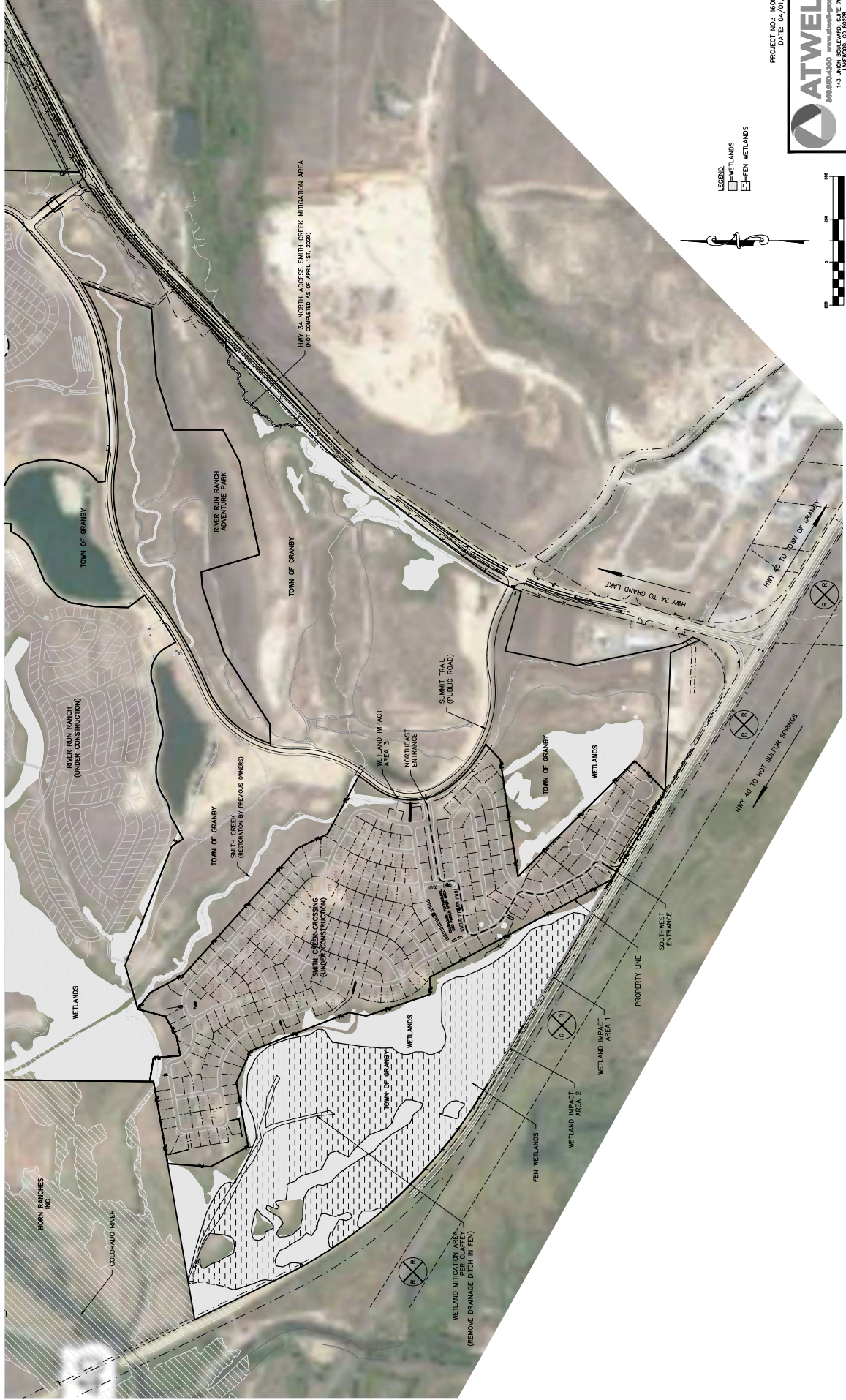




# SMITH CREEK CROSSING WETLAND IMPACT EXHIBITS

## OVERALL SITE PLAN

SHEET 3 OF 5



PROJECT NO. 16002225  
DATE: 04/01/2020

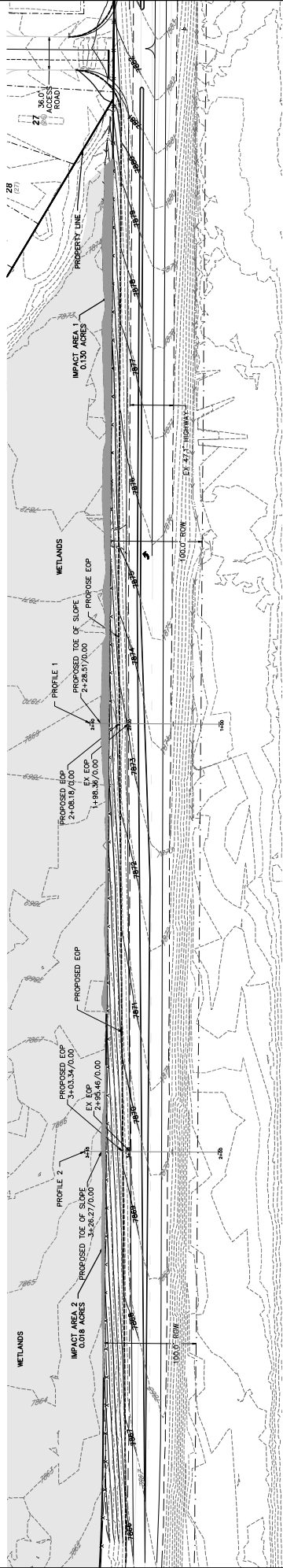
**ATWELL**

143 UNION BOULEVARD, SUITE 700  
LAKEWOOD, CO 80026  
TEL: 303.462.1100  
WWW.ATWELL-ENGINEERS.COM

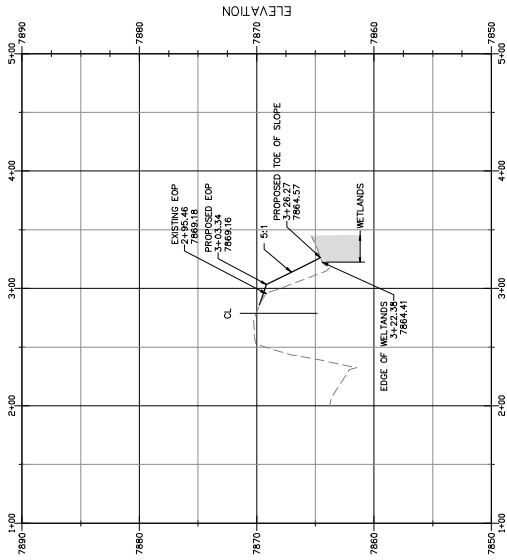
# SMITH CREEK CROSSING WETLAND IMPACT EXHIBITS

## HIGHWAY 40 IMPROVEMENTS - SOUTHWEST ENTRANCE

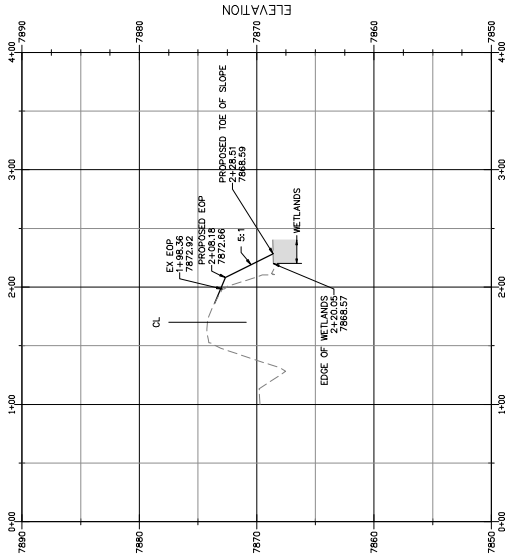
SHEET 4 OF 5



PROFILE 2



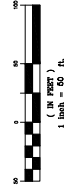
PROFILE 1



STATION

STATION

WETLAND IMPACTS	
AREA	IMPACTED AREA (ACRES)
1	0.130
2	.018
3	0.006
TOTAL	0.154



PROJECT NO: 16002225  
DATE: 04/01/2020  
ATWELL  
143 UNION BOULEVARD, SUITE 700  
LAKESIDE, CA 92028  
CONTACT: R. COOPER  
WEBSITE: WWW.ATWELL.COM

# NORTHEAST ENTRANCE AT SUMMIT TRAIL

Topographic map showing the project area. Key features include:

- WETLANDS:** Shaded area on the left side of the map.
- IMPACT AREA, 3.000 ACRES:** Indicated by a dashed line and text.
- PROFILE 3:** A line representing the proposed road profile, with elevations ranging from 140.00 to 145.00.
- EDGE OF WETLANDS:** Indicated by a dashed line.
- EXTENTS OF DISTURBANCE:** Indicated by a dashed line.
- EXISTING DITCH:** A line representing an existing ditch, with elevations ranging from 140.00 to 145.00.
- NORTHEAST ENTRANCE:** Indicated by a dashed line and text.
- SMITH TRAIL:** A road running horizontally across the middle of the map.
- Elevations:** Various spot elevations are marked, including 140.00, 141.00, 142.00, 143.00, 144.00, 145.00, 146.00, 147.00, 148.00, 149.00, 150.00, 151.00, 152.00, 153.00, 154.00, 155.00, 156.00, 157.00, 158.00, 159.00, 160.00, 161.00, 162.00, 163.00, 164.00, 165.00, 166.00, 167.00, 168.00, 169.00, 170.00, 171.00, 172.00, 173.00, 174.00, 175.00, 176.00, 177.00, 178.00, 179.00, 180.00, 181.00, 182.00, 183.00, 184.00, 185.00, 186.00, 187.00, 188.00, 189.00, 190.00, 191.00, 192.00, 193.00, 194.00, 195.00, 196.00, 197.00, 198.00, 199.00, 200.00.

PROFILE 3

STATION

ELEVATION

7890

7880

7870

7865

6+00

5+00

4+00

3+00

2+00

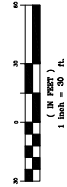
4+13.51  
7881.57  
EDGE OF PAVEMENT

SUMMIT TRAIL

4+51.87  
7870.11  
EDGE OF WETLANDS

3+95.47  
7865.47  
PROPOSED MATCH POINT

WETLANDS





Southern Project Site: Photographs of fen wetland adjacent to U.S Highway 40

Photo 1. Impact area looking east



Photo 2. Close up of impact area





Southern Project Site: Photographs of fen wetland adjacent to U.S Highway 40

Photo 3. Impact Area looking west.



Photo 4. Impact area on western end of new lanes

