

INDEX OF PLANS

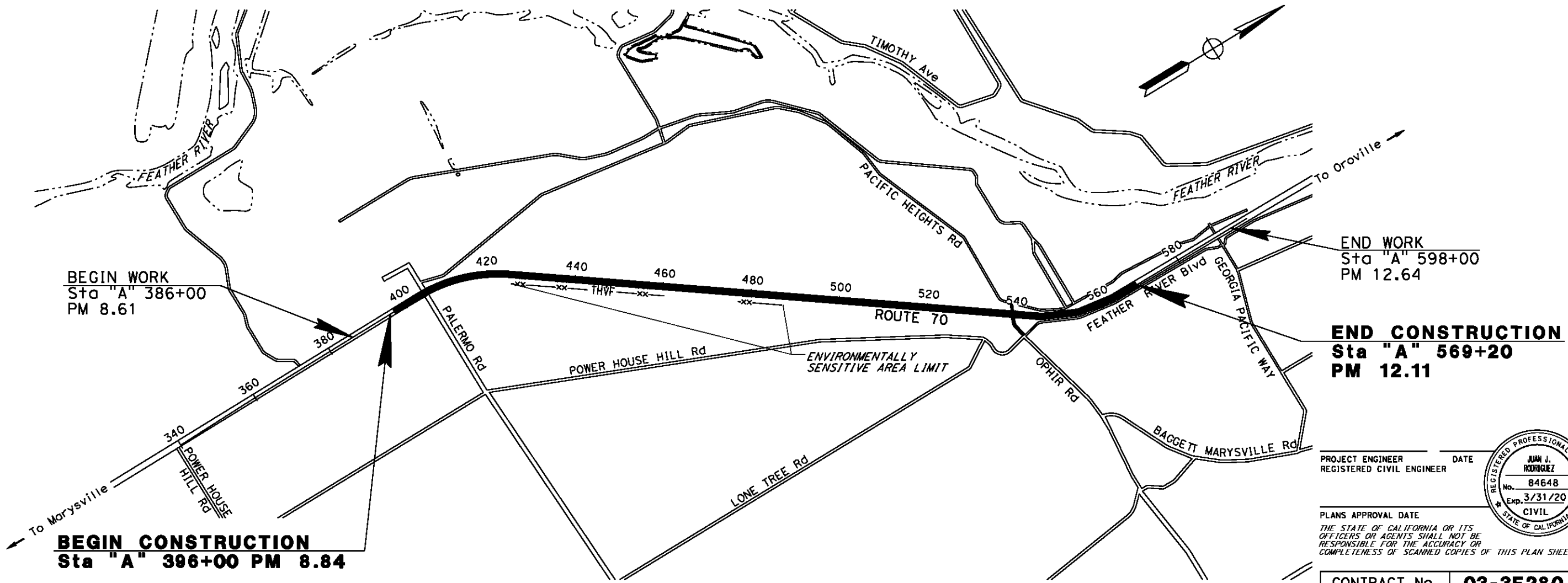
SHEET No.	DESCRIPTION
1	TITLE SHEET
2-5	TYPICAL CROSS SECTIONS
6	PROJECT CONTROL
7-19	LAYOUT PLAN
20-35	PROFILE AND SUPERELEVATION
36-54	CONSTRUCTION DETAILS
55-67	EROSION CONTROL
68	EROSION CONTROL DETAILS
69	EROSION CONTROL QUANTITIES
70	EROSION CONTROL LEGEND
71-83	CONTOUR GRADING
84-90	DRAINAGE PROFILES
91-94	DRAINAGE DETAILS
95-97	DRAINAGE QUANTITIES
98-110	UTILITY PLAN
111	CONSTRUCTION AREA SIGNS
112-142	STAGE CONSTRUCTION PLAN
143	STAGE CONSTRUCTION DETAILS
144-179	TRAFFIC HANDLING PLAN
180	TRAFFIC HANDLING PLAN QUANTITIES
181-182	DETOUR PLAN
183-196	PAVEMENT DELINEATION AND SIGN PLAN
197	PAVEMENT DELINEATION DETAILS
198	PAVEMENT DELINEATION QUANTITIES
199-201	SIGN DETAILS
202-207	SIGN QUANTITIES
208	SUMMARY OF QUANTITIES
209-221	ELECTRICAL PLANS

STATE OF CALIFORNIA  
**DEPARTMENT OF TRANSPORTATION**  
**PROJECT PLANS FOR CONSTRUCTION ON**  
**STATE HIGHWAY**  
**IN BUTTE COUNTY**  
**NEAR OROVILLE**  
**ON STATE ROUTE 70**  
**FROM 0.15 MILES SOUTH OF PALERMO ROAD**  
**TO 0.3 MILES NORTH OF OPHIR ROAD INTERSECTION**

TO BE SUPPLEMENTED BY STANDARD PLANS DATED 2015

Dist	COUNTY	ROUTE	POST MILES TOTAL PROJECT	SHEET No.	TOTAL SHEETS
03	But	70	8.84/12.11	1	221

LOCATION MAP



PROJECT MANAGER  
**WINDER BAJWA**  
 DESIGN MANAGER  
**JALWAT AHMAD**

THE CONTRACTOR SHALL POSSESS THE CLASS (OR CLASSES) OF LICENSE AS SPECIFIED IN THE "NOTICE TO BIDDERS."

NO SCALE

PROJECT ENGINEER DATE  
 REGISTERED CIVIL ENGINEER  
  
 PLANS APPROVAL DATE  
 THE STATE OF CALIFORNIA OR ITS OFFICERS OR AGENTS SHALL NOT BE RESPONSIBLE FOR THE ACCURACY OR COMPLETENESS OF SCANNED COPIES OF THIS PLAN SHEET.

CONTRACT No.	<b>03-3F280</b>
PROJECT ID	<b>0314000153</b>