

Purpose: Mixed-use Residential/
Commercial Development

Valley Oaks Planned Development

Near: Coyote Creek
County of: Lake

Datum: NAVD 88

Regional Location

Application by:
KIMCO Development Inc.
PO Box 7129
Santa Rosa CA 95407

Date: 9/26/2014

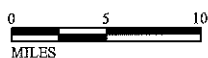
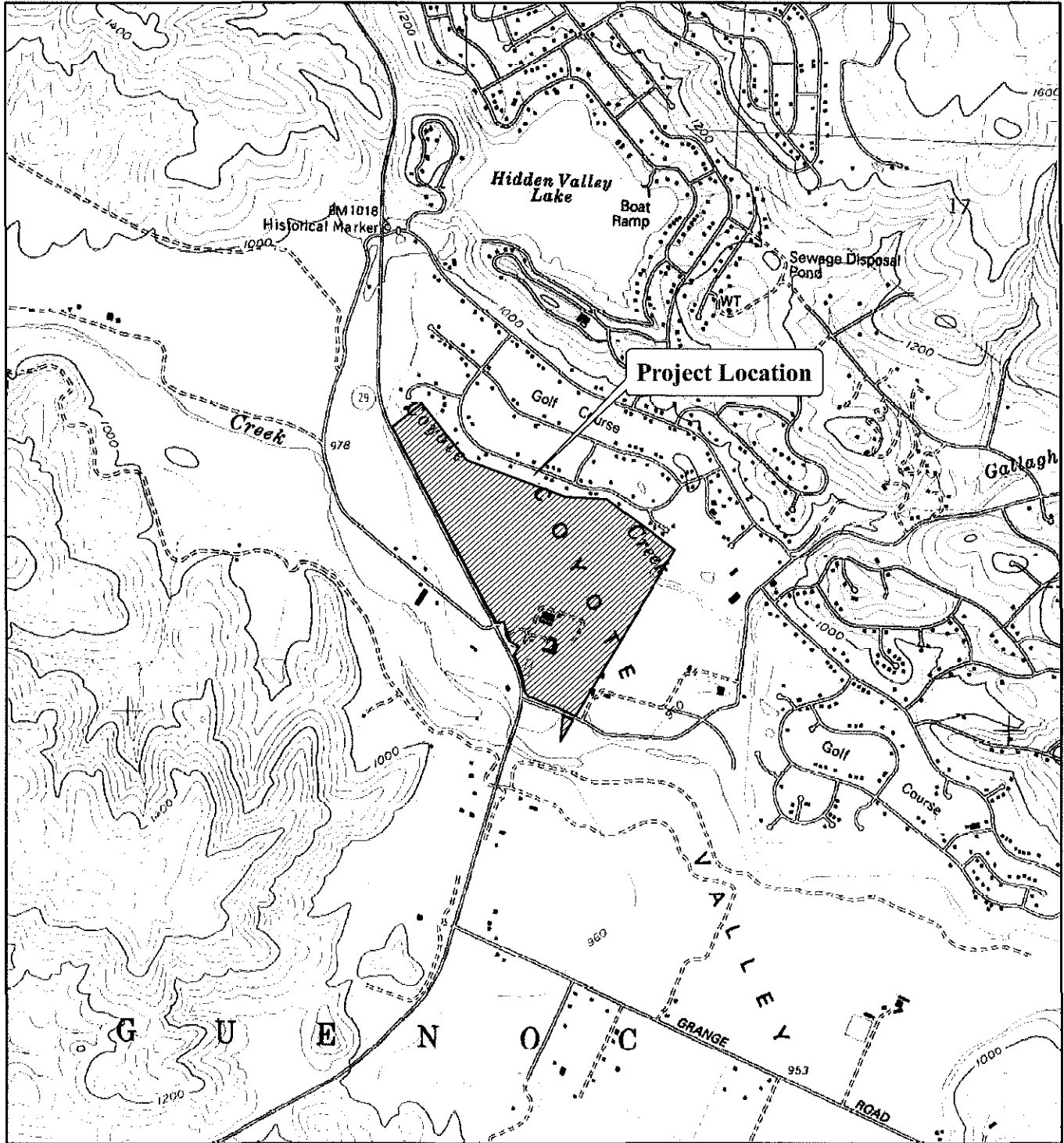


FIGURE 1 of 7



Purpose: Mixed-use Residential/
Commercial Development

Valley Oaks Planned Development

Near: Coyote Creek
County of: Lake

Datum: NAVD 88

Date: 9/26/2014

Project Location

Application by:
KIMCO Development Inc.
PO Box 7129
Santa Rosa CA 95407

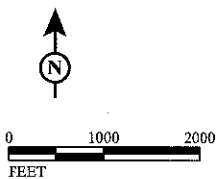
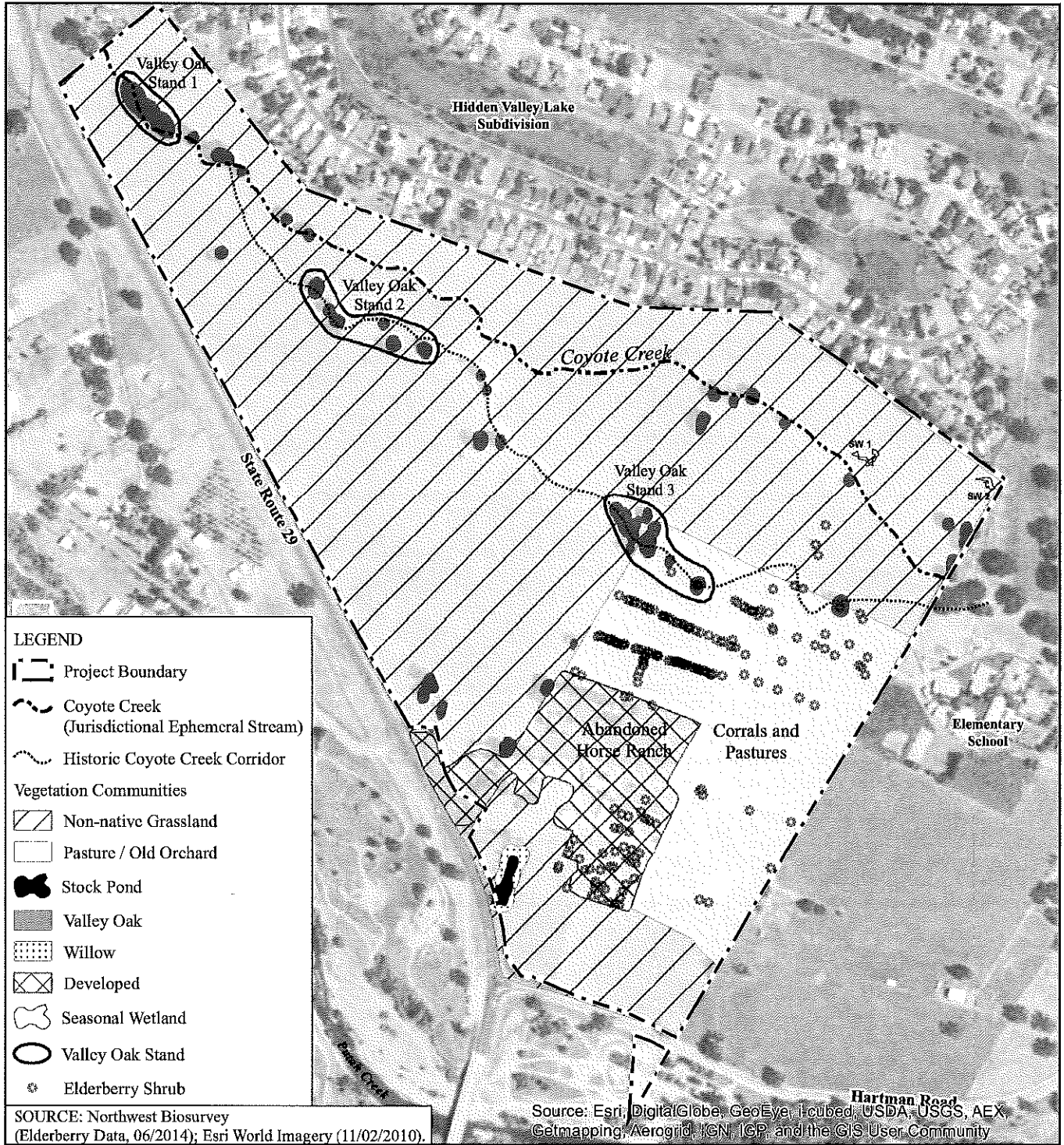


FIGURE 2 of 7



Purpose: Mixed-use Residential/
Commercial Development

Valley Oaks Planned Development

Near: Coyote Creek
County of: Lake

Datum: NAVD 88

Date: 9/26/2014

**Project Site Features and
Vegetation Communities**

Application by:
KIMCO Development Inc.
PO Box 7129
Santa Rosa CA 95407

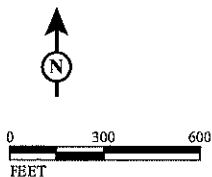
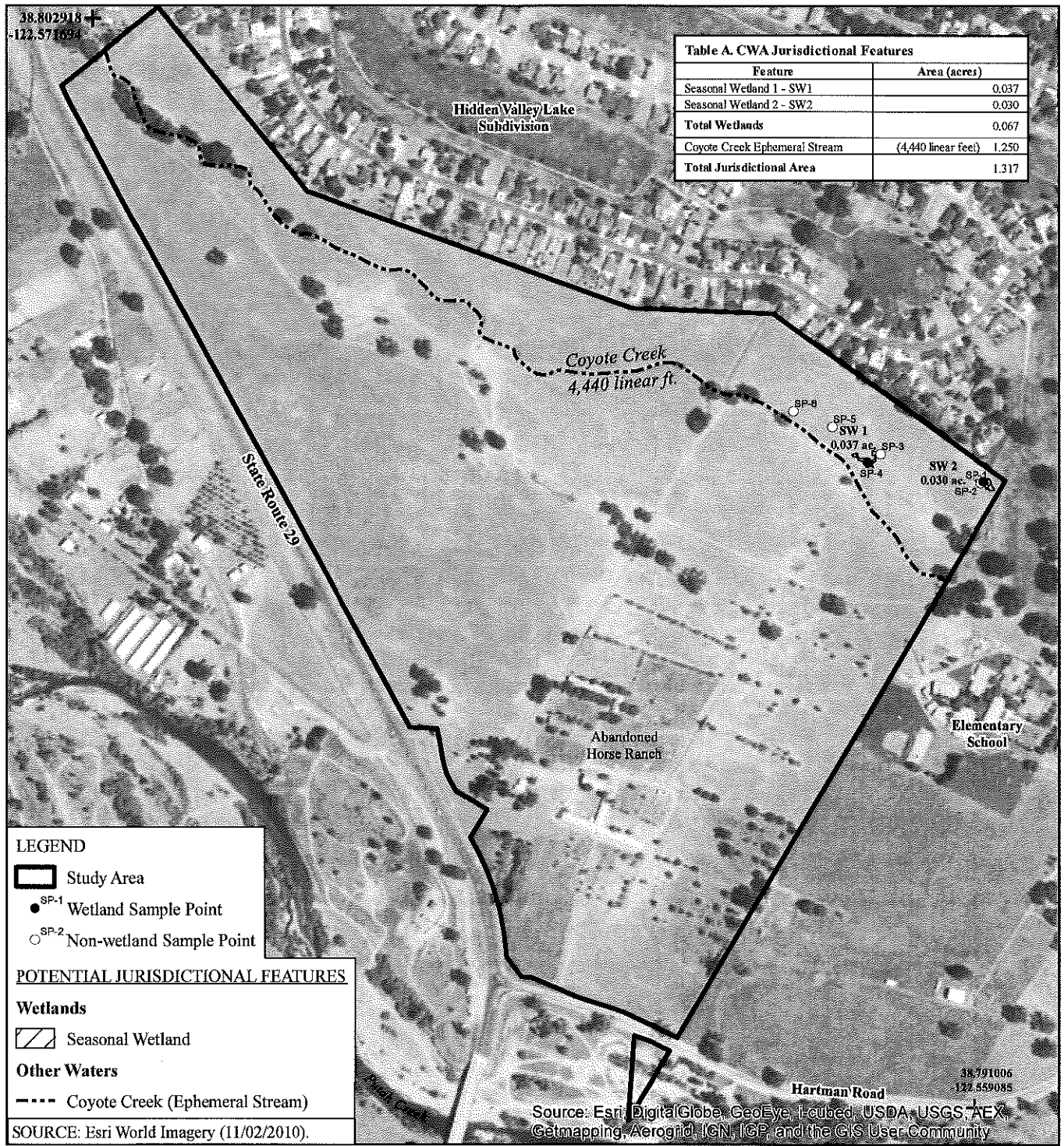


FIGURE 3 of 7



Purpose: Mixed-use Residential/
Commercial Development

Valley Oaks Planned Development

Near: Coyote Creek
County of: Lake

Datum: NAVD 88

Date: 9/26/2014

Potential Waters of the U.S.

Application by:
KIMCO Development Inc.
PO Box 7129
Santa Rosa CA 95407

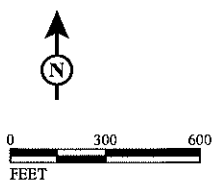
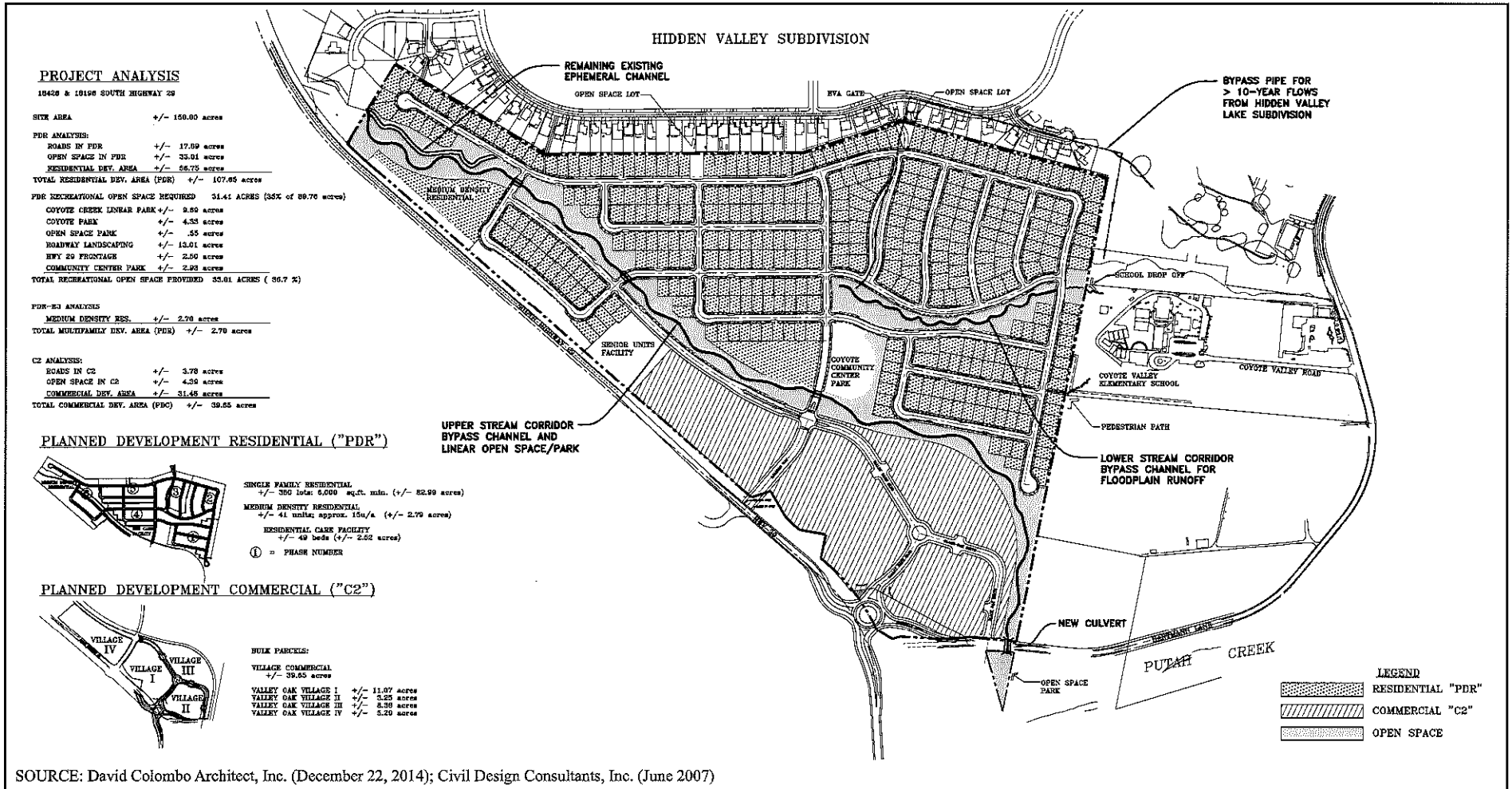


FIGURE 4 of 7



Purpose: Mixed-use Residential/
Commercial Development

Valley Oaks Planned Development

Near: Coyote Creek

Datum: NAVD 88

Proposed Project Plan

County of: Lake

Date: 9/26/2014

Application by:
KIMCO Development Inc.
PO Box 7129
Santa Rosa CA 95407

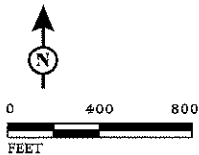
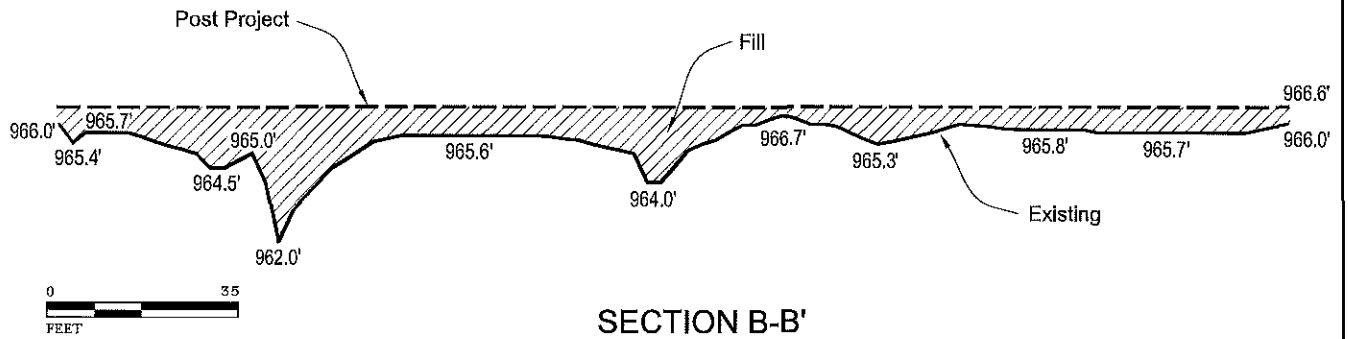
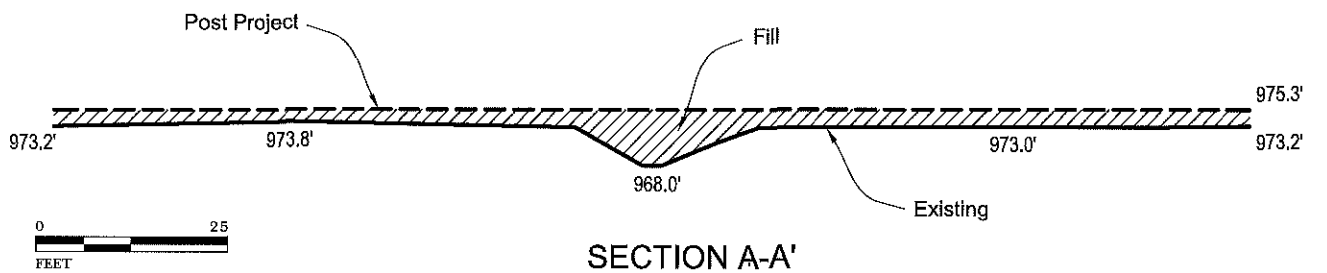
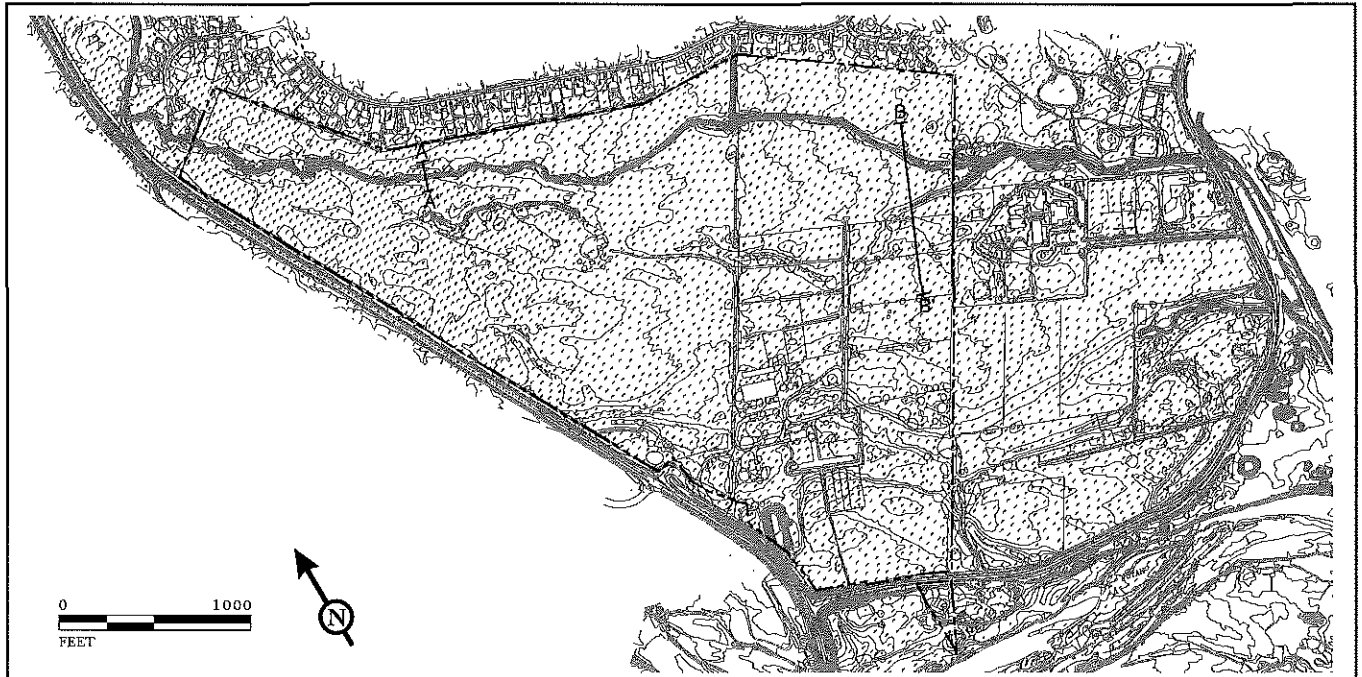


FIGURE 5 OF 7



SOURCE: Golden Bear Biostudies

Purpose: Mixed-use Residential/
Commercial Development

Valley Oaks Planned Development

Near: Coyote Creek
County of: Lake

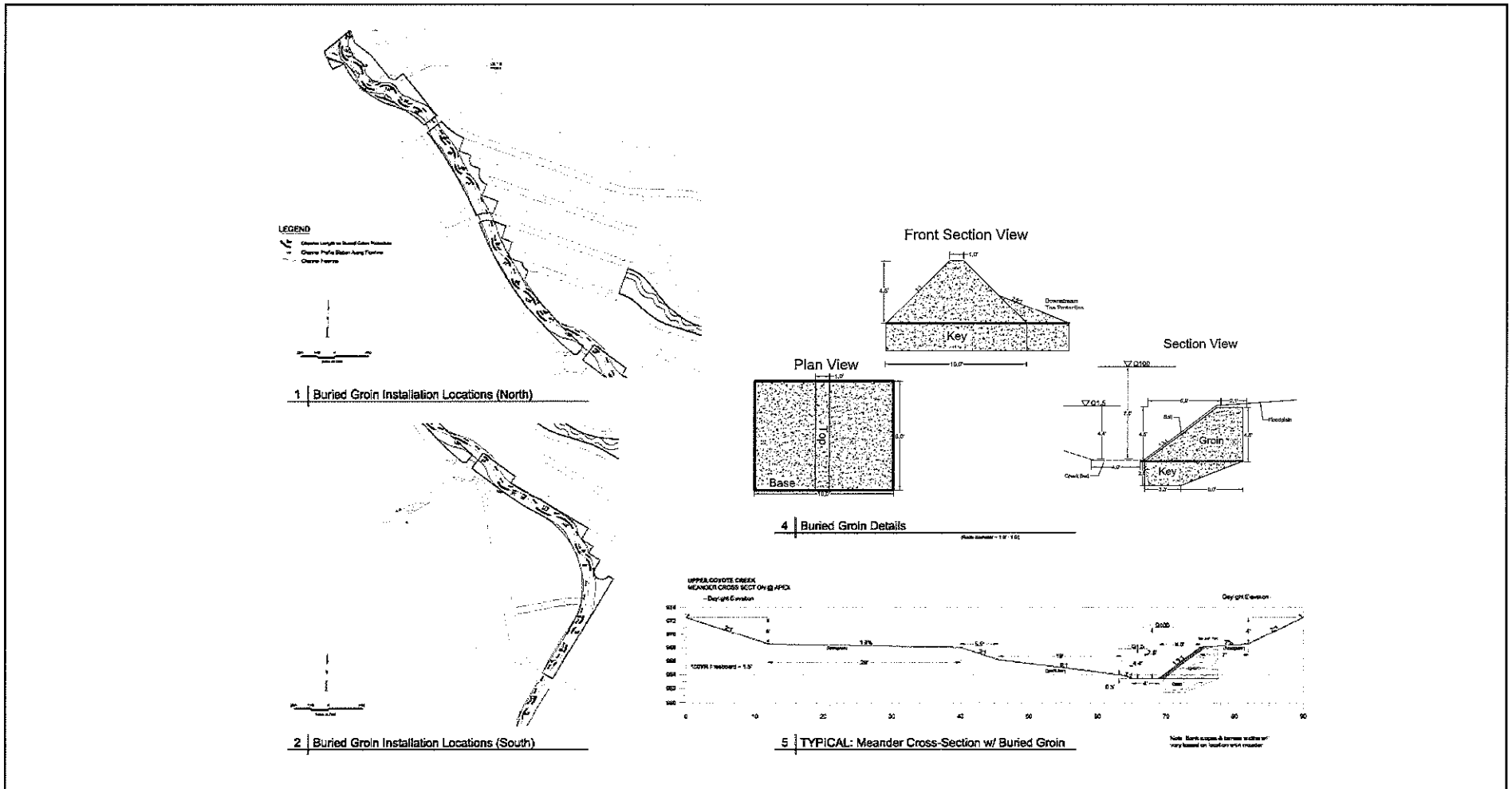
Datum: NAVD 88

Date: 9/26/2014

Typical Cross Sections

Application by:
KIMCO Development Inc.
PO Box 7129
Santa Rosa CA 95407

FIGURE 6 of 7



Purpose: Mixed-use Residential/
Commercial Development

Datum: NAVD 88

Date: 9/26/2014

Valley Oaks Planned Development

Proposed Stream Relocation

Near: Coyote Creek

County of: Lake

Application by:
KIMCO Development Inc.
PO Box 7129
Santa Rosa CA 95407

FIGURE 7 OF 7