

DIRECTIONS TO COLOWYO MINE

*From Craig Colorado; Take CO. Highway #13 South for 24.6 miles.
Then turn right into the Colowyo Mine property.*

*From Meeker Colorado; Take CO. Highway #13 North for 21.9 miles.
Then turn left into the Colowyo Mine property.*

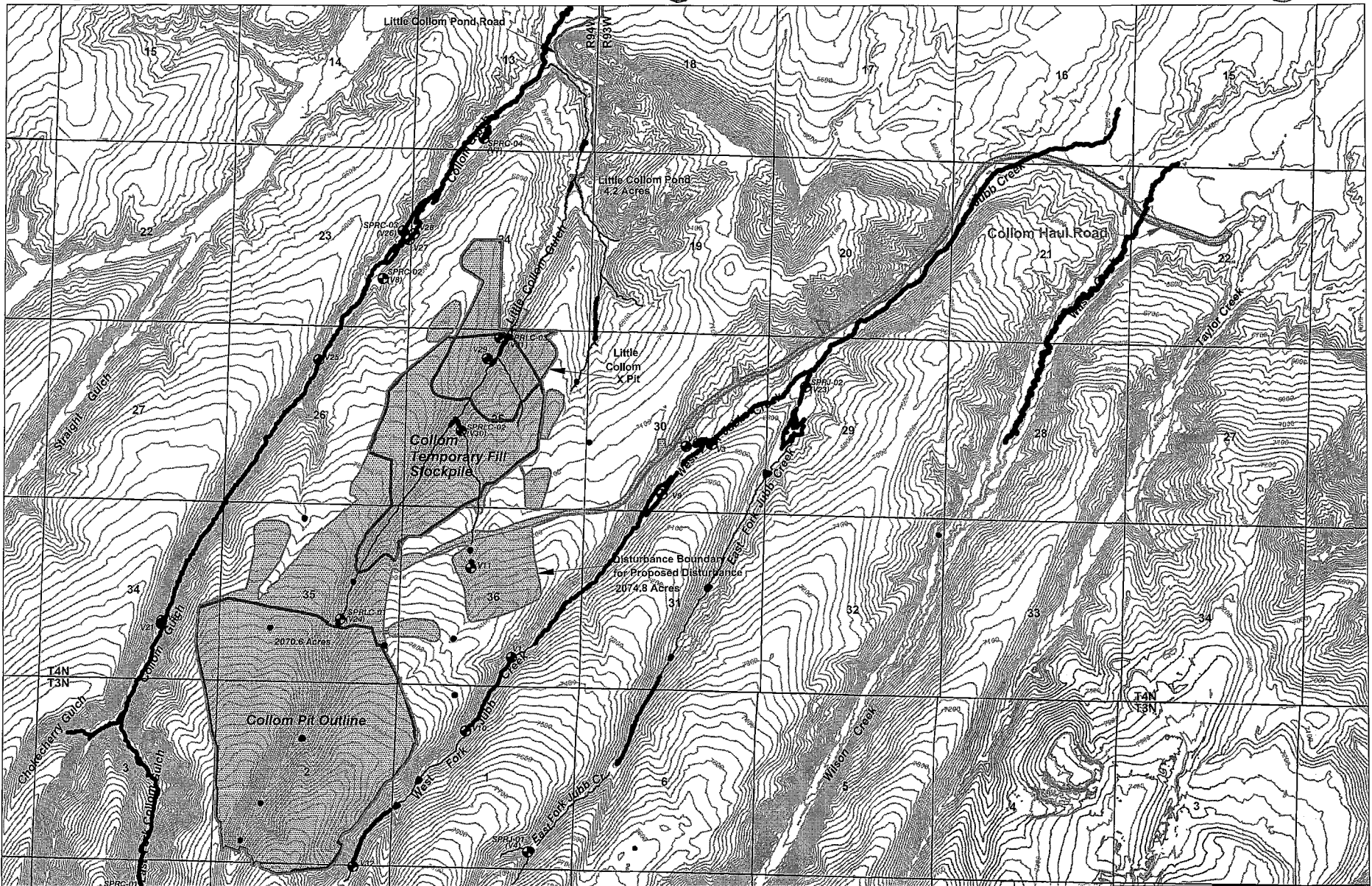
*The Colom Project is located approximately 4 miles West
of the current Colowyo Mine site.*

**Figure 1
Location Map**



Scale: NA

DATE: 10/31/12

DRAWN BY: ESI



LEGEND

-  Wetland Delineation
-  Waters of U.S.

Coordinates in NAD27 Colorado North Zone, US Foot

0 4000' 8000'

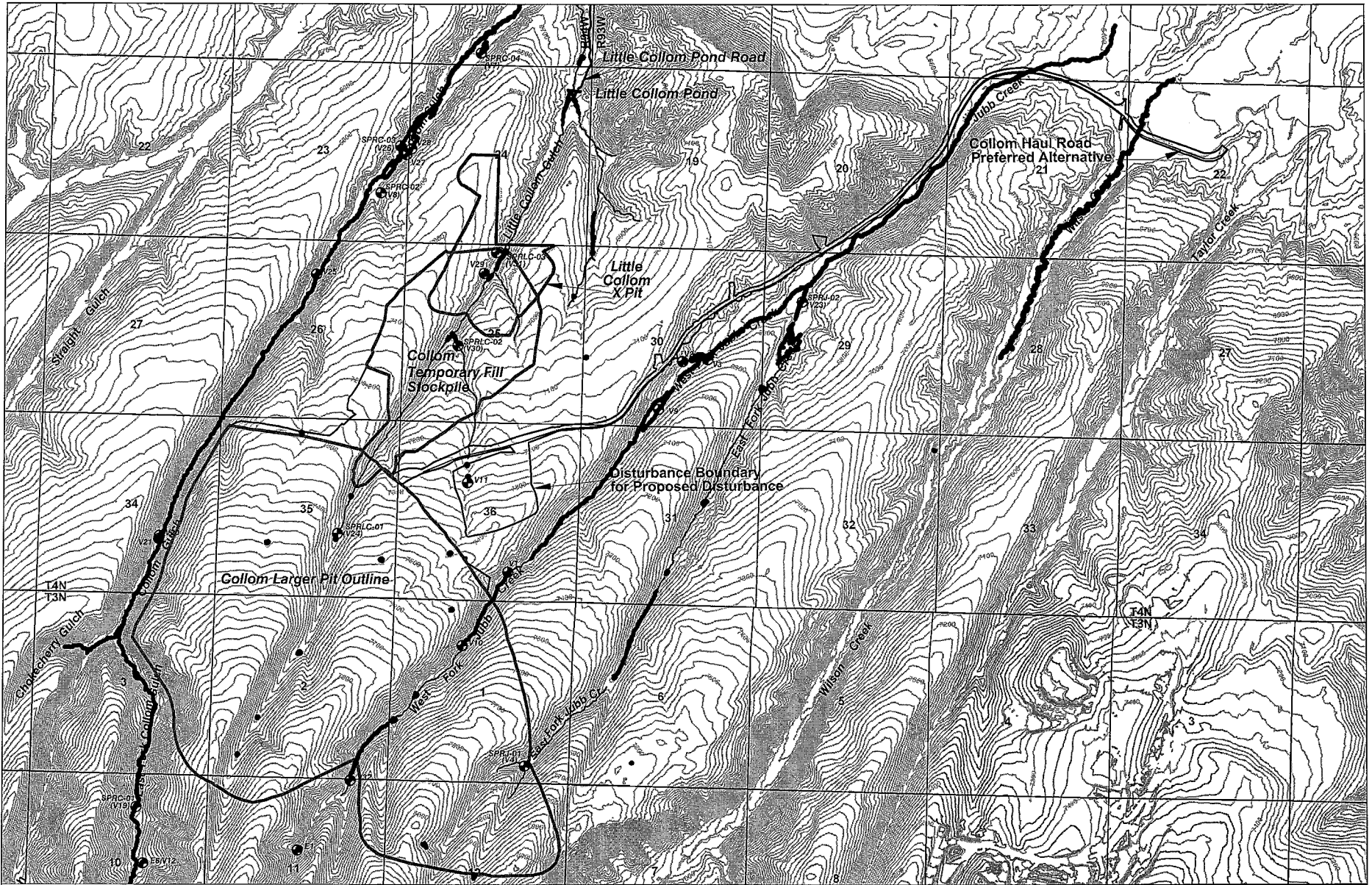


Figure 1A
Collom Mine Preferred Alternative
with Wetland Overlay



Scale: 1"=4000'

DATE: 10/30/12

DRAWN BY: ESI



LEGEND

-  Wetland Delineation
-  Waters of U.S.

Coordinates in NAD27 Colorado North Zone, US Foot

0 4000' 8000'



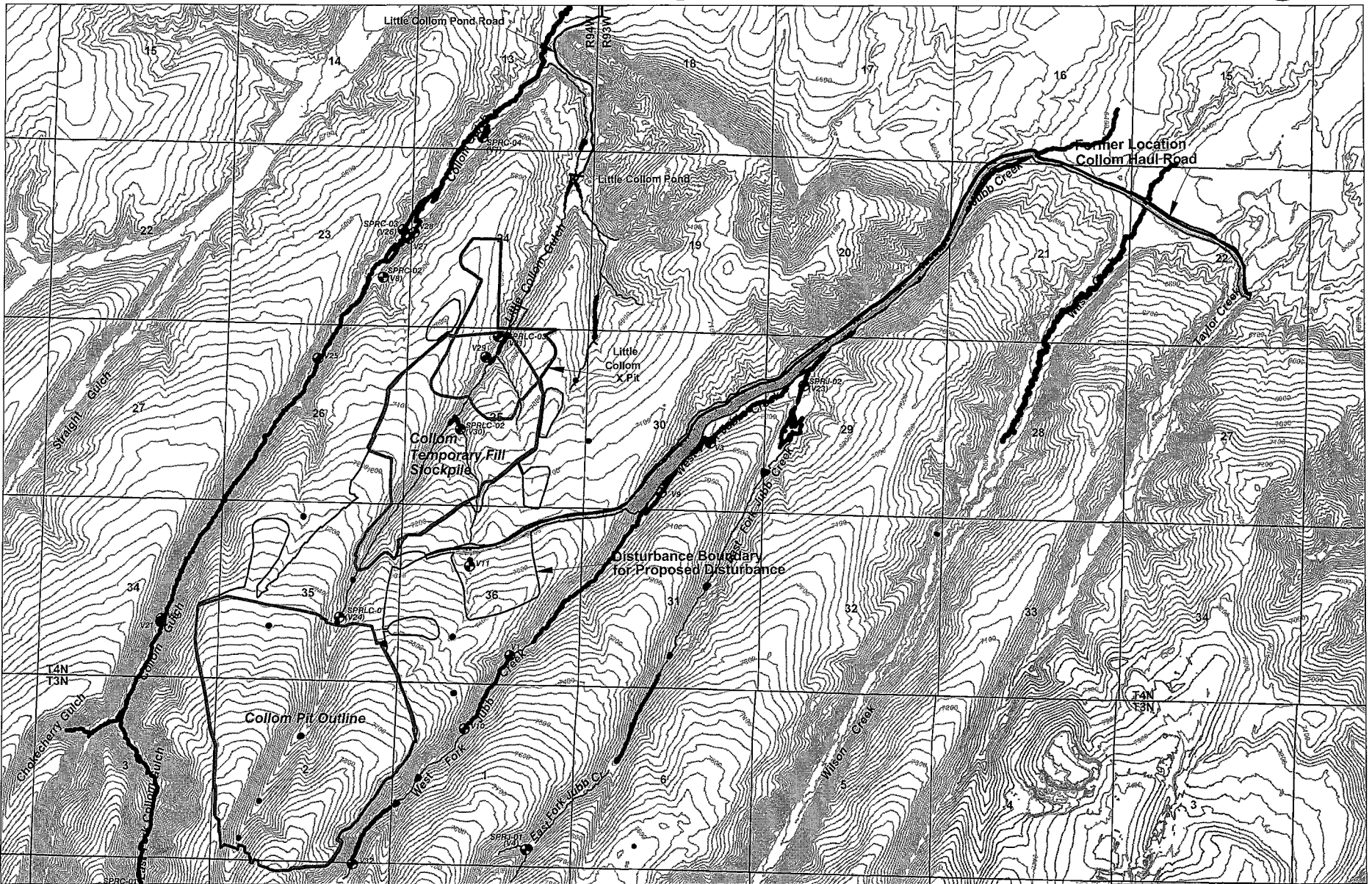
Figure 1B

Alternative 3 Larger Collom Pit



Scale: 1"=4000'

DATE: 10/30/12

DRAWN BY: ESI



LEGEND

-  Wetland Delineation
-  Waters of U.S.

0 4000' 8000'



Figure 1C
Former Location Collom Haul Road with Wetland Overlay

Scale: 1"=4000'

DATE: 10/31/12

DRAWN BY: ESI

Coordinates in NAD27 Colorado North Zone, US Foot