

**APPROVED JURISDICTIONAL DETERMINATION FORM
U.S. Army Corps of Engineers**

This form should be completed by following the instructions provided in Section IV of the JD Form Instructional Guidebook.

SECTION I: BACKGROUND INFORMATION

A. REPORT COMPLETION DATE FOR APPROVED JURISDICTIONAL DETERMINATION (JD): July 1, 2015

B. DISTRICT OFFICE, FILE NAME, AND NUMBER: Sacramento District, Northstar California Resort Basin Retrofit Project, SPK-2015-00268

C. PROJECT LOCATION AND BACKGROUND INFORMATION:

State: **California** County/parish/borough: **Placer** City:
Center coordinates of site (lat/long in degree decimal format): Lat. **39.2766522923403°**, Long. **-120.11997431807°**
Universal Transverse Mercator: **10 748433.38 4351432.34**

Name of nearest waterbody: **West Fork West Martis Creek**

Name of nearest Traditional Navigable Water (TNW) into which the aquatic resource flows: **Truckee River (Navigable-In-Fact)**

Name of watershed or Hydrologic Unit Code (HUC): **Truckee, 16050102**

- Check if map/diagram of review area and/or potential jurisdictional areas is/are available upon request.
 Check if other sites (e.g., offsite mitigation sites, disposal sites, etc...) are associated with this action and are recorded on a different JD form:

D. REVIEW PERFORMED FOR SITE EVALUATION (CHECK ALL THAT APPLY):

- Office (Desk) Determination. Date: **July 1, 2015**
 Field Determination. Date(s):

SECTION II: SUMMARY OF FINDINGS

A. RHA SECTION 10 DETERMINATION OF JURISDICTION.

There **are no** "navigable waters of the U.S." within Rivers and Harbors Act (RHA) jurisdiction (as defined by 33 CFR part 329) in the review area. [Required]

- Waters subject to the ebb and flow of the tide.
 Waters are presently used, or have been used in the past, or may be susceptible for use to transport interstate or foreign commerce. Explain:

B. CWA SECTION 404 DETERMINATION OF JURISDICTION.

There **are and are not** "waters of the U.S." within Clean Water Act (CWA) jurisdiction (as defined by 33 CFR part 328) in the review area. [Required]

1. Waters of the U.S.

a. Indicate presence of waters of U.S. in review area (check all that apply):¹

- TNWs, including territorial seas
 Wetlands adjacent to TNWs
 Relatively permanent waters² (RPWs) that flow directly or indirectly into TNWs
 Non-RPWs that flow directly or indirectly into TNWs
 Wetlands directly abutting RPWs that flow directly or indirectly into TNWs
 Wetlands adjacent to but not directly abutting RPWs that flow directly or indirectly into TNWs
 Wetlands adjacent to non-RPWs that flow directly or indirectly into TNWs
 Impoundments of jurisdictional waters
 Isolated (interstate or intrastate) waters, including isolated wetlands

b. Identify (estimate) size of waters of the U.S. in the review area:

Non-wetland waters: **394** linear feet, wide, and/or **0.042** acres.
Wetlands: acres.

c. Limits (boundaries) of jurisdiction based on: 1987 Delineation Manual

Elevation of established OHWM (if known):

2. Non-regulated waters/wetlands (check if applicable):³

- Potentially jurisdictional waters and/or wetlands were assessed within the review area and determined to be not jurisdictional. Explain: **The wetland "W2", as shown on the August 7, 2015 "Figure 4: Delineation Map - Basin**

¹ Boxes checked below shall be supported by completing the appropriate sections in Section III below.

² For purposes of this form, an RPW is defined as a tributary that is not a TNW and that typically flows year-round or has continuous flow at least "seasonally" (e.g., typically 3 months).

³ Supporting documentation is presented in Section III.F.

Retrofit Project" map, by Resource Concepts, Inc., is a constructed stormwater basin originally intended to collect treated stormwater from the adjacent parking lot. "W2" has been cut off from all stormwater inflows (pipe removed and hole plugged). The only inputs are precipitation and a minor amount of naturally occurring groundwater. Wetland "W2" has connectivity to a downstream TNW (through 4 tributaries and more than 4 aerial miles) but due to low volume, lack of inputs, and distance to a TNW, any effect the wetland may have on the downstream TNW is speculative and/or insubstantial; it does not meet the Significant Nexus standard. Wetland "W2" has an area of 0.17 acres.

Features "W3A" and "W3 Segment 1", as shown on the August 7, 2015 "Figure 4: Delineation Map - Basin Retrofit Project" map, by Resource Concepts, Inc., are constructed non-relatively permanent drainage channels exhibiting an OHWM, bed and bank. These channels were constructed entirely in uplands, drain only uplands, and have less than seasonal flow, and therefore are not considered to be "Waters of the U.S." These two features have a combined total area of 0.014-acre (215 linear feet).

SECTION III: CWA ANALYSIS

A. TNWs AND WETLANDS ADJACENT TO TNWs

The agencies will assert jurisdiction over TNWs and wetlands adjacent to TNWs. If the aquatic resource is a TNW, complete Section III.A.1 and Section III.D.1. only; if the aquatic resource is a wetland adjacent to a TNW, complete Sections III.A.1 and 2 and Section III.D.1.; otherwise, see Section III.B below.

1. TNW

Identify TNW:

Summarize rationale supporting determination:

2. Wetland adjacent to TNW

Summarize rationale supporting conclusion that wetland is "adjacent":

B. CHARACTERISTICS OF TRIBUTARY (THAT IS NOT A TNW) AND ITS ADJACENT WETLANDS (IF ANY):

This section summarizes information regarding characteristics of the tributary and its adjacent wetlands, if any, and it helps determine whether or not the standards for jurisdiction established under *Rapanos* have been met.

The agencies will assert jurisdiction over non-navigable tributaries of TNWs where the tributaries are "relatively permanent waters" (RPWs), i.e. tributaries that typically flow year-round or have continuous flow at least seasonally (e.g., typically 3 months). A wetland that directly abuts an RPW is also jurisdictional. If the aquatic resource is not a TNW, but has year-round (perennial) flow, skip to Section III.D.2. If the aquatic resource is a wetland directly abutting a tributary with perennial flow, skip to Section III.D.4.

A wetland that is adjacent to but that does not directly abut an RPW requires a significant nexus evaluation. Corps districts and EPA regions will include in the record any available information that documents the existence of a significant nexus between a relatively permanent tributary that is not perennial (and its adjacent wetlands if any) and a traditional navigable water, even though a significant nexus finding is not required as a matter of law.

If the waterbody⁴ is not an RPW, or a wetland directly abutting an RPW, a JD will require additional data to determine if the waterbody has a significant nexus with a TNW. If the tributary has adjacent wetlands, the significant nexus evaluation must consider the tributary in combination with all of its adjacent wetlands. This significant nexus evaluation that combines, for analytical purposes, the tributary and all of its adjacent wetlands is used whether the review area identified in the JD request is the tributary, or its adjacent wetlands, or both. If the JD covers a tributary with adjacent wetlands, complete Section III.B.1 for the tributary, Section III.B.2 for any onsite wetlands, and Section III.B.3 for all wetlands adjacent to that tributary, both onsite and offsite. The determination whether a significant nexus exists is determined in Section III.C below.

1. Characteristics of non-TNWs that flow directly or indirectly into TNW

(i) General Area Conditions:

Watershed size: 26754 acres

Drainage area: Pick List

Average annual rainfall: 35 inches

Average annual snowfall: inches

⁴ Note that the Instructional Guidebook contains additional information regarding swales, ditches, washes, and erosional features generally and in the arid West.

(ii) Physical Characteristics:

(a) Relationship with TNW:

- Tributary flows directly into TNW.
- Tributary flows through **3** tributaries before entering TNW.

Project waters are **Pick List** river miles from TNW.
 Project waters are **1 (or less)** river miles from RPW.
 Project waters are **2-5** aerial (straight) miles from TNW.
 Project waters are **1 (or less)** aerial (straight) miles from RPW.
 Project waters cross or serve as state boundaries. Explain:

Identify flow route to TNW⁵: **Constructed tributary "W3 Segment 2", as shown on the August 7, 2015 "Figure 4: Delineation Map - Basin Retrofit Project" map, by Resource Concepts, Inc., flows to West Fork West Martis Creek (RPW), then to West Martis Creek (RPW), then to Martis Creek (RPW), and then to the Truckee River (Navigable-In-Fact).**

Tributary stream order, if known:

(b) General Tributary Characteristics (check all that apply):

Tributary is: Natural
 Artificial (man-made). Explain: **This analysis applies to "W3 Segment 2". This segment drains a constructed stormwater retention basin meeting the 3 wetland criteria.**

The subject NRPW segment is a constructed drainage channel that collects flow from 1) a constructed stormwater retention basin meeting the 3 wetland criteria, which drains to the NRPW tributary via an underground pipe and in high-flow events, via an upland swale, and 2) additional underground pipes that carry treated runoff originating from nearby parking lot storm drains.

Manipulated (man-altered). Explain:

Tributary properties with respect to top of bank (estimate):

Average width: **5** feet
 Average depth: feet
 Average side slopes: **Pick List.**

Primary tributary substrate composition (check all that apply):

- | | | |
|----------------------------------------------------------------------------------------------------------------------------|----------------------------------------------------|-----------------------------------|
| <input type="checkbox"/> Silts | <input type="checkbox"/> Sands | <input type="checkbox"/> Concrete |
| <input checked="" type="checkbox"/> Cobbles | <input checked="" type="checkbox"/> Gravel | <input type="checkbox"/> Muck |
| <input type="checkbox"/> Bedrock | <input type="checkbox"/> Vegetation. Type/% cover: | |
| <input checked="" type="checkbox"/> Other. Explain: The tributary is currently lined with HDPE sheets and sandbags. | | |

Tributary condition/stability [e.g., highly eroding, sloughing banks]. Explain:

Presence of run/riffle/pool complexes. Explain:

Tributary geometry: **Pick List**

Tributary gradient (approximate average slope): %

(c) Flow:

Tributary provides for: **Intermittent but not seasonal flow**

Estimate average number of flow events in review area/year: **Pick List**

Describe flow regime: **Functions to convey stormwater flows from from adjacent parking lot and adjacent stormwater retention basin to West Fork West Martis Creek, which has connectivity to the Truckee River. Majority of flow is maintained from discharge of parking lot stormwater runoff that is treated in an on-site above ground treatment system. The NRPW tributary also collects a minor amount of groundwater + high-water flows from the adjacent stormwater retention basin.**

Other information on duration and volume:

Surface flow is: **Discrete.** Characteristics:

Subsurface flow: **Pick List.** Explain findings:

Dye (or other) test performed:

⁵ Flow route can be described by identifying, e.g., tributary a, which flows through the review area, to flow into tributary b, which then flows into TNW.

Tributary has (check all that apply):

- Bed and banks
- OHWM⁶ (check all indicators that apply):
 - clear, natural line impressed on the bank
 - changes in the character of soil
 - shelving
 - vegetation matted down, bent, or absent
 - leaf litter disturbed or washed away
 - sediment deposition
 - water staining
 - other (list):
- the presence of litter and debris
- destruction of terrestrial vegetation
- the presence of wrack line
- sediment sorting
- scour
- multiple observed or predicted flow events
- abrupt change in plant community

Discontinuous OHWM.⁷ Explain: **OHWM obscured by HDPE liner. OHWM was forensically determined from representative site photos taken prior to installation of the liner, and via observation of current flow pattern over the liner.**

If factors other than the OHWM were used to determine lateral extent of CWA jurisdiction (check all that apply):

- High Tide Line indicated by:
 - oil or scum line along shore objects
 - fine shell or debris deposits (foreshore)
 - physical markings/characteristics
 - tidal gauges
 - other (list):
- Mean High Water Mark indicated by:
 - survey to available datum;
 - physical markings;
 - vegetation lines/changes in vegetation types.

(iii) Chemical Characteristics:

Characterize tributary (e.g., water color is clear, discolored, oily film; water quality; general watershed characteristics, etc.). Explain: **Primarily treated parking lot stormwater runoff**
Identify specific pollutants, if known:

(iv) Biological Characteristics. Channel supports (check all that apply):

- Riparian corridor. Characteristics (type, average width):
- Wetland fringe. Characteristics:
- Habitat for:
 - Federally Listed species. Explain findings:
 - Fish/spawn areas. Explain findings:
 - Other environmentally-sensitive species. Explain findings:
 - Aquatic/wildlife diversity. Explain findings:

2. Characteristics of wetlands adjacent to non-TNW that flow directly or indirectly into TNW

(i) Physical Characteristics:

(a) General Wetland Characteristics:

Properties:

Wetland size: **0.17** acres

Wetland type. Explain: **Constructed stormwater basin, palustrine emergent wetland**

Wetland quality. Explain: **Due to wetland size, relative isolation from other water features, and lack of flow inputs other than minor groundwater and precipitation, overall biological/chemical and physical functions are expected to be low.**

Project wetlands cross or serve as state boundaries. Explain:

(b) General Flow Relationship with Non-TNW:

Flow is: **Intermittent flow**. Explain: **Intermittent flows connect wetland "W2" to NRPW "W3 Segment 2" via subsurface pipe, and in high flow events, above-ground via a non-jurisdictional swale. NRPW "W3 Segment 2" flows to West Fork West Martis Creek (RPW), then to West Martis Creek (RPW), then to Martis Creek (RPW), and then to the Truckee River (Navigable-In-Fact).**

Surface flow is: **Discrete**

Characteristics: **In high flow events, surface flow exits the wetland and connects to NRPW "W3 Segment 2" via a non-jurisdictional swale.**

⁶A natural or man-made discontinuity in the OHWM does not necessarily sever jurisdiction (e.g., where the stream temporarily flows underground, or where the OHWM has been removed by development or agricultural practices). Where there is a break in the OHWM that is unrelated to the waterbody's flow regime (e.g., flow over a rock outcrop or through a culvert), the agencies will look for indicators of flow above and below the break.

⁷Ibid.

Subsurface flow: **Yes**. Explain findings: **Subsurface drainage pipe connects to NRPW "W3 Segment 2"**.

Dye (or other) test performed:

(c) Wetland Adjacency Determination with Non-TNW:

Directly abutting

Not directly abutting

Discrete wetland hydrologic connection. Explain: **As described above.**

Ecological connection. Explain:

Separated by berm/barrier. Explain:

(d) Proximity (Relationship) to TNW

Project wetlands are **Pick List** river miles from TNW.

Project waters are **2-5** aerial (straight) miles from TNW.

Flow is from: **Wetland to navigable waters.**

Estimate approximate location of wetland as within the **Pick List** floodplain.

(ii) **Chemical Characteristics:**

Characterize wetland system (e.g., water color is clear, brown, oil film on surface; water quality; general watershed characteristics; etc.). Explain: **Clear. Currently charged by precipitation and groundwater.**

Identify specific pollutants, if known:

(iii) **Biological Characteristics. Wetland supports (check all that apply):**

Riparian buffer. Characteristics (type, average width):

Vegetation type/percent cover. Explain: **Veg dominated by herbaceous hydrophytes consisting of sedges, rush, cattail, Slender hairgrass, and a ring of willows and Alder.**

Habitat for:

Federally Listed species. Explain findings:

Fish/spawn areas. Explain findings:

Other environmentally-sensitive species. Explain findings:

Aquatic/wildlife diversity. Explain findings:

3. **Characteristics of all wetlands adjacent to the tributary (if any)**

All wetland(s) being considered in the cumulative analysis: **1**

Approximately **0.17** acres in total are being considered in the cumulative analysis.

For each wetland, specify the following:

Directly abuts? (Y/N)

Size (in acres)

Directly abuts? (Y/N)

Size (in acres)

N

0.17

Summarize overall biological, chemical and physical functions being performed: **Due to wetland size, relative isolation from other water features, and lack of flow inputs other than minor groundwater and precipitation, overall biological/chemical and physical functions are expected to be low. It is unclear whether the wetland will continue to meet the three wetland criteria in the absence of the artificial stormwater discharges.**

C. SIGNIFICANT NEXUS DETERMINATION

A significant nexus analysis will assess the flow characteristics and functions of the tributary itself and the functions performed by any wetlands adjacent to the tributary to determine if they significantly affect the chemical, physical, and biological integrity of a TNW. For each of the following situations, a significant nexus exists if the tributary, in combination with all of its adjacent wetlands, has more than a speculative or insubstantial effect on the chemical, physical and/or biological integrity of a TNW. Considerations when evaluating significant nexus include, but are not limited to the volume, duration, and frequency of the flow of water in the tributary and its proximity to a TNW, and the functions performed by the tributary and all its adjacent wetlands. It is not appropriate to determine significant nexus based solely on any specific threshold of distance (e.g. between a tributary and its adjacent wetland or between a tributary and the TNW). Similarly, the fact an adjacent wetland lies within or outside of a floodplain is not solely determinative of significant nexus.

Draw connections between the features documented and the effects on the TNW, as identified in the *Rapanos* Guidance and discussed in the Instructional Guidebook. Factors to consider include, for example:

- Does the tributary, in combination with its adjacent wetlands (if any), have the capacity to carry pollutants or flood waters to TNWs, or to reduce the amount of pollutants or flood waters reaching a TNW?

- Does the tributary, in combination with its adjacent wetlands (if any), provide habitat and lifecycle support functions for fish and other species, such as feeding, nesting, spawning, or rearing young for species that are present in the TNW?
- Does the tributary, in combination with its adjacent wetlands (if any), have the capacity to transfer nutrients and organic carbon that support downstream foodwebs?
- Does the tributary, in combination with its adjacent wetlands (if any), have other relationships to the physical, chemical, or biological integrity of the TNW?

Note: the above list of considerations is not inclusive and other functions observed or known to occur should be documented below:

1. **Significant nexus findings for non-RPW that has no adjacent wetlands and flows directly or indirectly into TNWs.** Explain findings of presence or absence of significant nexus below, based on the tributary itself, then go to Section III.D:
2. **Significant nexus findings for non-RPW and its adjacent wetlands, where the non-RPW flows directly or indirectly into TNWs.** Explain findings of presence or absence of significant nexus below, based on the tributary in combination with all of its adjacent wetlands, then go to Section III.D: **The NRPW tributary "W3 Segment 2" has the capacity to carry pollutants (treated parking lot stormwater runoff) to a downstream TNW on an intermittent basis, as these discharges are still being fed into the tributary. "W3 Segment 2" meets the Significant Nexus standard.**

Adjacent wetland "W2", is no longer fed by stormwater discharges from the adjacent parking lot. All stormwater inflows were cut off from the basin in Fall 2014 (inflow pipe was removed and hole was sealed). Minor amounts of groundwater daylighting from toe-of-slope on one side of the basin and this groundwater is collected in an HDPE-lined channel that exists within the basin (approximately 1 inch depth in a small portion of the basin). The basin is additionally charged naturally by snow and rainfall. The basin drains via a subsurface drainage pipe, and in high flow events, an above ground non-jurisdictional swale, to NRPW "W3 Segment 2". Though stormwater inflows have been cut off, all three wetland criteria are still present. It is unclear whether the wetland will continue to meet the criteria in the absence of the artificial stormwater discharges. The upper 14 inches of soil does not exhibit saturation or a water table. Wetland "W2" has connectivity to a downstream TNW (through 4 tributaries and more than 4 aerial miles) but due to low volume, lack of inputs, and distance to a TNW, any effect the wetland may have on the downstream TNW is speculative and/or insubstantial; it does not meet the Significant Nexus standard.

3. **Significant nexus findings for wetlands adjacent to an RPW but that do not directly abut the RPW.** Explain findings of presence or absence of significant nexus below, based on the tributary in combination with all of its adjacent wetlands, then go to Section III.D:

D. DETERMINATIONS OF JURISDICTIONAL FINDINGS. THE SUBJECT WATERS/WETLANDS ARE (CHECK ALL THAT APPLY):

1. **TNWs and Adjacent Wetlands.** Check all that apply and provide size estimates in review area:

- TNWs: linear feet, wide, Or acres.
- Wetlands adjacent to TNWs: acres.

2. **RPWs that flow directly or indirectly into TNWs.**

- Tributaries of TNWs where tributaries typically flow year-round are jurisdictional. Provide data and rationale indicating that tributary is perennial: **West Fork West Martis Creek is a known RPW.**
- Tributaries of TNW where tributaries have continuous flow "seasonally" (e.g., typically three months each year) are jurisdictional. Data supporting this conclusion is provided at Section III.B. Provide rationale indicating that tributary flows seasonally:

Provide estimates for jurisdictional waters in the review area (check all that apply):

- Tributary waters: **296** linear feet **4.4** wide.
 - Other non-wetland waters: acres.
- Identify type(s) of waters:

3. **Non-RPWs⁸ that flow directly or indirectly into TNWs.**

- Waterbody that is not a TNW or an RPW, but flows directly or indirectly into a TNW, and it has a significant nexus with a TNW is jurisdictional. Data supporting this conclusion is provided at Section III.C.

Provide estimates for jurisdictional waters within the review area (check all that apply):

- Tributary waters: **98** linear feet, wide.
- Other non-wetland waters: acres.

⁸See Footnote # 3.

Identify type(s) of waters:

4. Wetlands directly abutting an RPW that flow directly or indirectly into TNWs.

- Wetlands directly abut RPW and thus are jurisdictional as adjacent wetlands.
 - Wetlands directly abutting an RPW where tributaries typically flow year-round. Provide data and rationale indicating that tributary is perennial in Section III.D.2, above. Provide rationale indicating that wetland is directly abutting an RPW:
 - Wetlands directly abutting an RPW where tributaries typically flow "seasonally." Provide data indicating that tributary is seasonal in Section III.B and rationale in Section III.D.2, above. Provide rationale indicating that wetland is directly abutting an RPW:

Provide acreage estimates for jurisdictional wetlands in the review area: acres.

5. Wetlands adjacent to but not directly abutting an RPW that flow directly or indirectly into TNWs.

- Wetlands that do not directly abut an RPW, but when considered in combination with the tributary to which they are adjacent and with similarly situated adjacent wetlands, have a significant nexus with a TNW are jurisdictional. Data supporting this conclusion is provided at Section III.C.

Provide acreage estimates for jurisdictional wetlands in the review area: acres.

6. Wetlands adjacent to non-RPWs that flow directly or indirectly into TNWs.

- Wetlands adjacent to such waters, and have when considered in combination with the tributary to which they are adjacent and with similarly situated adjacent wetlands, have a significant nexus with a TNW are jurisdictional. Data supporting this conclusion is provided at Section III.C.

Provide estimates for jurisdictional wetlands in the review area: acres.

7. Impoundments of jurisdictional waters.⁹

As a general rule, the impoundment of a jurisdictional tributary remains jurisdictional.

- Demonstrate that impoundment was created from "waters of the U.S.," or
- Demonstrate that water meets the criteria for one of the categories presented above (1-6), or
- Demonstrate that water is isolated with a nexus to commerce (see E below).

E. ISOLATED [INTERSTATE OR INTRA-STATE] WATERS, INCLUDING ISOLATED WETLANDS, THE USE, DEGRADATION OR DESTRUCTION OF WHICH COULD AFFECT INTERSTATE COMMERCE, INCLUDING ANY SUCH WATERS (CHECK ALL THAT APPLY):¹⁰

- which are or could be used by interstate or foreign travelers for recreational or other purposes.
- from which fish or shellfish are or could be taken and sold in interstate or foreign commerce.
- which are or could be used for industrial purposes by industries in interstate commerce.
- Interstate isolated waters. Explain:
- Other factors. Explain:

Identify water body and summarize rationale supporting determination:

Provide estimates for jurisdictional waters in the review area (check all that apply):

- Tributary waters: linear feet, wide.
- Other non-wetland waters: acres.
Identify type(s) of waters:
- Wetlands: acres.

F. NON-JURISDICTIONAL WATERS, INCLUDING WETLANDS (CHECK ALL THAT APPLY):

- If potential wetlands were assessed within the review area, these areas did not meet the criteria in the 1987 Corps of Engineers Wetland Delineation Manual and/or appropriate Regional Supplements.
- Review area included isolated waters with no substantial nexus to interstate (or foreign) commerce.
 - Prior to the Jan 2001 Supreme Court decision in "SWANCC," the review area would have been regulated based solely on the "Migratory Bird Rule" (MBR).

⁹ To complete the analysis refer to the key in Section III.D.6 of the Instructional Guidebook.

¹⁰ Prior to asserting or declining CWA jurisdiction based solely on this category, Corps Districts will elevate the action to Corps and EPA HQ for review consistent with the process described in the Corps/EPA Memorandum Regarding CWA Act Jurisdiction Following Rapanos.

Waters do not meet the "Significant Nexus" standard, where such a finding is required for jurisdiction. Explain:
The wetland (constructed stormwater basin) "W2", is no longer fed by stormwater discharges from the adjacent parking lot. All stormwater inflows were cut off from the basin in Fall 2014 (inflow pipe was removed and hole was sealed). Minor amounts of groundwater daylights from toe-of-slope on one side of the basin and this groundwater is collected in an HDPE-lined channel that exists within the basin (approximately 1 inch depth in a small portion of the basin). The basin is additionally charged naturally by snow and rainfall. The basin drains via a subsurface drainage pipe, and in high flow events, an above ground non-jurisdictional swale, to NRPW "W3 Segment 2". Though stormwater inflows have been cut off, all three wetland criteria are still present. It is unclear whether the wetland will continue to meet the criteria in the absence of the artificial stormwater discharges. The upper 14 inches of soil does not exhibit saturation or a water table. Wetland "W2" has connectivity to a downstream TNW (through 4 tributaries and more than 4 aerial miles) but due to low volume, lack of inputs, and distance to a TNW, any effect the wetland may have on the downstream TNW is speculative and/or insubstantial; it does not meet the Significant Nexus standard. Wetland "W2" has an area of 0.17 acres.

Other: (explain, if not covered above): **Features "W3A" and "W3 Segment 1", are constructed non-relatively permanent drainage channels exhibiting an OHWM, bed and bank. These channels were constructed entirely in uplands, drain only uplands, and have less than seasonal flow, and therefore are not considered to be "Waters of the U.S." These two features have a combined total area of 0.014-acre (215 linear feet).**

Provide acreage estimates for non-jurisdictional waters in the review area, where the sole potential basis of jurisdiction is the MBR factors (i.e., presence of migratory birds, presence of endangered species, use of water for irrigated agriculture), using best professional judgment (check all that apply):

- Non-wetland waters (i.e., rivers, streams): linear feet, wide.
- Lakes/ponds: acres.
- Other non-wetland waters: acres. List type of aquatic resource:
- Wetlands: acres.

Provide acreage estimates for non-jurisdictional waters in the review area that do not meet the "Significant Nexus" standard, where such a finding is required for jurisdiction (check all that apply):

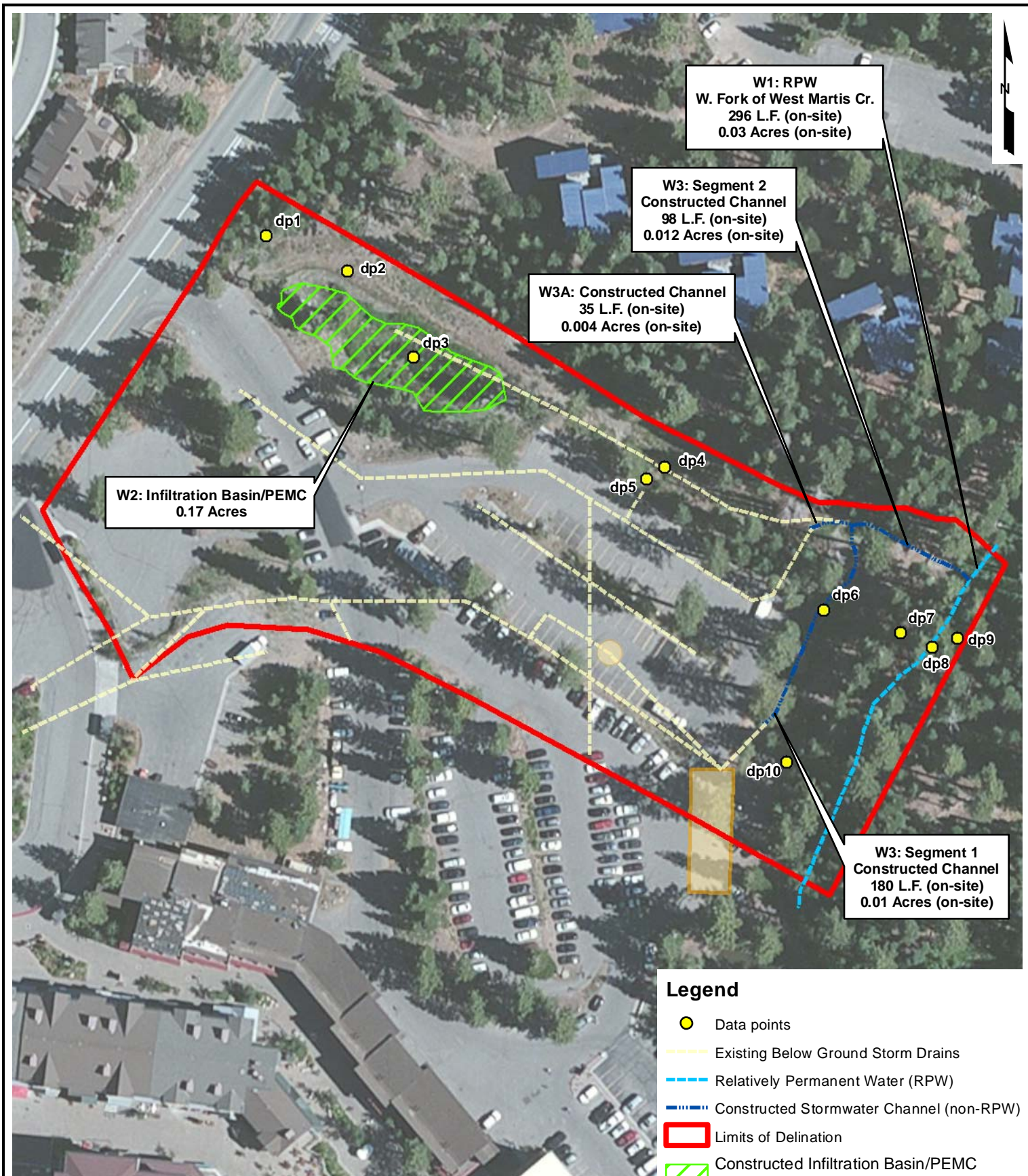
- Non-wetland waters (i.e., rivers, streams): linear feet, wide.
- Lakes/ponds: acres.
- Other non-wetland waters: acres. List type of aquatic resource:
- Wetlands: **0.17** acres.

SECTION IV: DATA SOURCES.

A. SUPPORTING DATA. Data reviewed for JD (check all that apply - checked items shall be included in case file and, where checked and requested, appropriately reference sources below):

- Maps, plans, plots or plat submitted by or on behalf of the applicant/consultant: **August 7, 2015 "Figure 4: Delineation Map - Basin Retrofit Project" by Resource Concepts, Inc.**
- Data sheets prepared/submitted by or on behalf of the applicant/consultant.
 - Office concurs with data sheets/delineation report.
 - Office does not concur with data sheets/delineation report.
- Data sheets prepared by the Corps:
- Corps navigable waters' study:
- U.S. Geological Survey Hydrologic Atlas:
 - USGS NHD data.
 - USGS 8 and 12 digit HUC maps.
- U.S. Geological Survey map(s). Cite scale & quad name: **1:24K; CA-MARTIS PEAK**
- USDA Natural Resources Conservation Service Soil Survey. Citation:
- National wetlands inventory map(s). Cite name: **U.S. Fish and Wildlife Service 2014-05 vector digital data Classification of Wetlands and Deepwater Habitats of the United States**
- State/Local wetland inventory map(s):
- FEMA/FIRM maps:
- 100-year Floodplain Elevation is: (National Geodetic Vertical Datum of 1929)
- Photographs: Aerial (Name & Date): **Google Earth Pro aerial imagery 1992-2015**
or Other (Name & Date): **Consultant supplied representative site photos, Summer 2014, 01-08-2015, and 01-26-2015**
- Previous determination(s). File no. and date of response letter:
- Applicable/supporting case law:
- Applicable/supporting scientific literature:
- Other information (please specify):

B. ADDITIONAL COMMENTS TO SUPPORT JD:



- Legend**
- Data points
 - Existing Below Ground Storm Drains
 - Relatively Permanent Water (RPW)
 - Constructed Stormwater Channel (non-RPW)
 - Limits of Delineation
 - Constructed Infiltration Basin/PEMC (Stormwater Inputs Removed)
 - Temporary Stormwater Treatment System
 - Temporary System Wet Well

Figure 4
Delineation Map
 Basin Retrofit Project
 Revised 8-7-15

1 inch = 100 feet
 0 50 100 Feet **RCI**
 Resource Concepts Inc.

Applicant: Trimont Land Company
Owner: CLP Northstar LLC
County: Placer Co, California
Surveyors: JoAnne Michael
Date: January 8, 2015
Source: ESRI Aerial Imagery
Service 2010