

APPROVED JURISDICTIONAL DETERMINATION FORM
U.S. Army Corps of Engineers

SECTION I: BACKGROUND INFORMATION

A. REPORT COMPLETION DATE FOR APPROVED JURISDICTIONAL DETERMINATION (JD): 20-Apr-2009

B. DISTRICT OFFICE, FILE NAME, AND NUMBER: Sacramento District, SPK-2000-00421-JD1

C. PROJECT LOCATION AND BACKGROUND INFORMATION:

State : CA - California
County/parish/borough: Stanislaus
City:
Lat: 37.6030417037575
Long: -121.13144256224
Universal Transverse Mercator Folder UTM List
UTM list determined by folder location

- NAD83 / UTM zone 37S

Waters UTM List
UTM list determined by waters location

- NAD83 / UTM zone 37S

Name of nearest waterbody: Tuolumne River
Name of nearest Traditional Navigable Water (TNW): Tuolumne River
Name of watershed or Hydrologic Unit Code (HUC): Middle San Joaquin-Lower Merced- Lower Stanislaus. California (18040002)

- Check if map/diagram of review area and/or potential jurisdictional areas is/are available upon request.
- Check if other sites (e.g., offsite mitigation sites, disposal sites, etc.) are associated with the action and are recorded on a different JD form.

D. REVIEW PERFORMED FOR SITE EVALUATION:

- Office Determination Date: 20-Apr-2009
- Field Determination Date(s):

SECTION II: SUMMARY OF FINDINGS

A. RHA SECTION 10 DETERMINATION OF JURISDICTION

There are "navigable waters of the U.S." within Rivers and Harbors Act (RHA) jurisdiction (as defined by 33 CFR part 329) in the review area.

- Waters subject to the ebb and flow of the tide.
- Waters are presently used, or have been used in the past, or may be susceptible for use to transport interstate or foreign commerce.

Explain: The Tuolumne River has been identified in navigation studies to be a navigable water per Section 10 of the Rivers and Harbors Act of 1899.

B. CWA SECTION 404 DETERMINATION OF JURISDICTION.

There "waters of the U.S." within Clean Water Act (CWA) jurisdiction (as defined by 33 CFR part 328) in the review area.

1. Waters of the U.S.

a. Indicate presence of waters of U.S. in review area:¹

Water Name	Water Type(s) Present
Tuolumne River	TNWs, including territorial seas

b. Identify (estimate) size of waters of the U.S. in the review area:

Area: 2519 (m²)

Linear: (m)

c. Limits (boundaries) of jurisdiction:

based on: Established by OHWM.

OHWM Elevation: (if known)

2. Non-regulated waters/wetlands:³

Potentially jurisdictional waters and/or wetlands were assessed within the review area and determined to be not jurisdictional. Explain:

SECTION III: CWA ANALYSIS**A. TNWs AND WETLANDS ADJACENT TO TNWs****1. TNW**

TNW Name	Summarize rationale supporting determination:
Tuolumne River	-

2. Wetland Adjacent to TNW

Not Applicable.

B. CHARACTERISTICS OF TRIBUTARY (THAT IS NOT A TNW) AND ITS ADJACENT WETLANDS (IF ANY):**1. Characteristics of non-TNWs that flow directly or indirectly into TNW****(i) General Area Conditions:**

Watershed size: []

Drainage area: []

Average annual rainfall: inches

Average annual snowfall: inches

(ii) Physical Characteristics**(a) Relationship with TNW:** Tributary flows directly into TNW. Tributary flows through [] tributaries before entering TNW.

:Number of tributaries

Project waters are [] river miles from TNW.

Project waters are [] river miles from RPW.

Project Waters are [] aerial (straight) miles from TNW.

Project waters are [] aerial(straight) miles from RPW.

 Project waters cross or serve as state boundaries.**Explain:****Identify flow route to TNW:⁵****Tributary Stream Order, if known:**

Not Applicable.

(b) General Tributary Characteristics:**Tributary is:**

Not Applicable.

Tributary properties with respect to top of bank (estimate):

Not Applicable.

Primary tributary substrate composition:

Not Applicable.

Tributary (conditions, stability, presence, geometry, gradient):

Not Applicable.

(c) Flow:

Not Applicable.

Surface Flow is:

Not Applicable.

Subsurface Flow:

Not Applicable.

Tributary has:

Not Applicable.

If factors other than the OHWM were used to determine lateral extent of CWA jurisdiction:

High Tide Line indicated by:

Not Applicable.

Mean High Water Mark indicated by:

Not Applicable.

(iii) Chemical Characteristics:

Characterize tributary (e.g., water color is clear, discolored, oily film; water quality; general watershed characteristics, etc.).

Not Applicable.

(iv) Biological Characteristics. Channel supports:

Not Applicable.

2. Characteristics of wetlands adjacent to non-TNW that flow directly or indirectly into TNW

(i) Physical Characteristics:

(a) General Wetland Characteristics:

Properties:

Not Applicable.

(b) General Flow Relationship with Non-TNW:

Flow is:

Not Applicable.

Surface flow is:

Not Applicable.

Subsurface flow:

Not Applicable.

(c) Wetland Adjacency Determination with Non-TNW:

Not Applicable.

(d) Proximity (Relationship) to TNW:

Not Applicable.

(ii) Chemical Characteristics:

Characterize tributary (e.g., water color is clear, discolored, oily film; water quality; general watershed characteristics, etc.).

Not Applicable.

(iii) Biological Characteristics. Wetland supports:

Not Applicable.

3. Characteristics of all wetlands adjacent to the tributary (if any):

All wetlands being considered in the cumulative analysis:

Not Applicable.

Summarize overall biological, chemical and physical functions being performed:

Not Applicable.

C. SIGNIFICANT NEXUS DETERMINATION

A significant nexus analysis will assess the flow characteristics and functions of the tributary itself and the functions performed by any wetlands adjacent to the tributary to determine if they significantly affect the chemical, physical, and biological integrity of a TNW. For each of the following situations, a significant nexus exists if the tributary, in combination with all of its adjacent wetlands, has more than a speculative or insubstantial effect on the chemical, physical and/or biological integrity of a TNW. Considerations when evaluating significant nexus include, but are not limited to the volume, duration, and frequency of the flow of water in the tributary and its proximity to a TNW, and the functions performed by the tributary and all its adjacent wetlands. It is not appropriate to determine significant nexus based solely on any specific threshold of distance (e.g. between a tributary and its adjacent wetland or between a tributary and the TNW). Similarly, the fact an adjacent wetland lies within or outside of a floodplain is not solely determinative of significant nexus.

Significant Nexus: Not Applicable

D. DETERMINATIONS OF JURISDICTIONAL FINDINGS. THE SUBJECT WATERS/WETLANDS ARE:

1. TNWs and Adjacent Wetlands:

Wetland Name	Type	Size (Linear) (m)	Size (Area) (m ²)
Tuolumne River	TNWs, including territorial seas	-	2518.88458008
Total:		0	2518.88458008

2. RPWs that flow directly or indirectly into TNWs:

Not Applicable.

Provide estimates for jurisdictional waters in the review area:

Not Applicable.

3. Non-RPWs that flow directly or indirectly into TNWs:⁸

Not Applicable.

Provide estimates for jurisdictional waters in the review area:

Not Applicable.

4. Wetlands directly abutting an RPW that flow directly or indirectly into TNWs.

Not Applicable.

Provide acreage estimates for jurisdictional wetlands in the review area:

Not Applicable.

5. Wetlands adjacent to but not directly abutting an RPW that flow directly or indirectly into TNWs:

Not Applicable.

Provide acreage estimates for jurisdictional wetlands in the review area:

Not Applicable.

6. Wetlands adjacent to non-RPWs that flow directly or indirectly into TNWs:

Not Applicable.

Provide estimates for jurisdictional wetlands in the review area:

Not Applicable.

7. Impoundments of jurisdictional waters:⁹

Not Applicable.

E. ISOLATED [INTERSTATE OR INTRA-STATE] WATERS INCLUDING ISOLATED WETLANDS, THE USE, DEGRADATION OR DESTRUCTION OF WHICH COULD AFFECT INTERSTATE COMMERCE, INCLUDING ANY SUCH WATERS:¹⁰

Not Applicable.

Identify water body and summarize rationale supporting determination:

Not Applicable.

Provide estimates for jurisdictional waters in the review area:

Not Applicable.

F. NON-JURISDICTIONAL WATERS. INCLUDING WETLANDS

- If potential wetlands were assessed within the review area, these areas did not meet the criteria in the 1987 Corps of Engineers Wetland Delineation Manual and/or appropriate Regional Supplements:
- Review area included isolated waters with no substantial nexus to interstate (or foreign) commerce:
- Prior to the Jan 2001 Supreme Court decision in "SWANCC," the review area would have been regulated based solely on the "Migratory Bird Rule" (MBR):
- Waters do not meet the "Significant Nexus" standard, where such a finding is required for jurisdiction (Explain):
- Other (Explain):

Provide acreage estimates for non-jurisdictional waters in the review area, where the sole potential basis of jurisdiction is the MBR factors (i.e., presence of migratory birds, presence of endangered species, use of water for irrigated agriculture), using best professional judgment:

Not Applicable.

Provide acreage estimates for non-jurisdictional waters in the review area, that do not meet the "Significant Nexus" standard, where such a finding is required for jurisdiction.

Not Applicable.

SECTION IV: DATA SOURCES.

A. SUPPORTING DATA. Data reviewed for JD

(listed items shall be included in case file and, where checked and requested, appropriately reference below):

Data Reviewed	Source Label	Source Description
--Maps, plans, plots or plat submitted by or on behalf of the applicant/consultant	Biological Resources & Jurisdictional Delineation Map	Figure 6. Revised map. Undated
--Corps navigable waters study	-	-

B. ADDITIONAL COMMENTS TO SUPPORT JD:

Not Applicable.

¹-Boxes checked below shall be supported by completing the appropriate sections in Section III below.
²-For purposes of this form, an RPW is defined as a tributary that is not a TNW and that typically flows year-round or has continuous flow at least "seasonally" (e.g., typically 3 months).
³-Supporting documentation is presented in Section III.F.
⁴-Note that the Instructional Guidebook contains additional information regarding swales, ditches, washes, and erosional features generally and in the arid West.
⁵-Flow route can be described by identifying, e.g., tributary a, which flows through the review area, to flow into tributary b, which then flows into TNW.
⁶-A natural or man-made discontinuity in the OHWM does not necessarily sever jurisdiction (e.g., where the stream temporarily flows underground, or where the OHWM has been removed by development or agricultural practices). Where there is a break in the OHWM that is unrelated to the waterbody's flow regime (e.g., flow over a rock outcrop or through a culvert), the agencies will look for indicators of flow above and below the break.
⁷-Ibid.
⁸-See Footnote #3.
⁹-To complete the analysis refer to the key in Section III.D.6 of the Instructional Guidebook.
¹⁰-Prior to asserting or declining CWA jurisdiction based solely on this category, Corps Districts will elevate the action to Corps and EPA HQ for review consistent with the process described in the Corps/EPA Memorandum Regarding CWA Act Jurisdiction Following Rapanos.

STANISLAUS COUNTY DEPARTMENT OF PUBLIC WORKS

PLANS FOR THE SEISMIC RETROFIT CONSTRUCTION OF SHILOH ROAD BRIDGE AT TUOLUMNE RIVER (STATE BRIDGE NO. 38C-018)

INDEX OF SHEETS

1. COVER
2. AREA OF POTENTIAL EFFECTS
3. CONSTRUCTION AREA SIGNS
4. GENERAL PLAN
5. FOUNDATION LAYOUT PLAN
6. ABUTMENT RETROFIT DETAILS NO. 1
7. ABUTMENT RETROFIT DETAILS NO. 2
8. PIER 3 RETROFIT
9. PIER RETROFIT DETAILS NO. 1
10. PIER RETROFIT DETAILS NO. 2
11. HINGE RETROFIT DETAILS NO. 1
12. HINGE RETROFIT DETAILS NO. 2
13. PILE DETAILS
14. STRUCTURE EXCAVATION & BACKFILL
15. SOFFIT OPENING DETAILS
16. AS-BUILT LOG OF TEST BORINGS

NOTE:

BRIDGE RAILING HAS BEEN REPLACED, AFTER PREPARATION OF THESE STRUCTURE PLANS, WITH RAILING TYPE 116 (MODIFIED). SEE SPECIFICATIONS SECTION 10-1.09: "EXISTING HIGHWAY FACILITIES"

FEDERAL AID PROJECT
STPLZ-5938(099)

TO BE SUPPLEMENTED BY STANDARD PLANS, DATED MAY, 2006;
STANDARD SPECIFICATIONS, DATED MAY, 2006; AND ALL CURRENT
ADDENDA AND AMENDMENTS TO
STANDARD PLANS AND STANDARD SPECIFICATIONS



STATE OF CALIFORNIA

DESIGN DESIGNATION

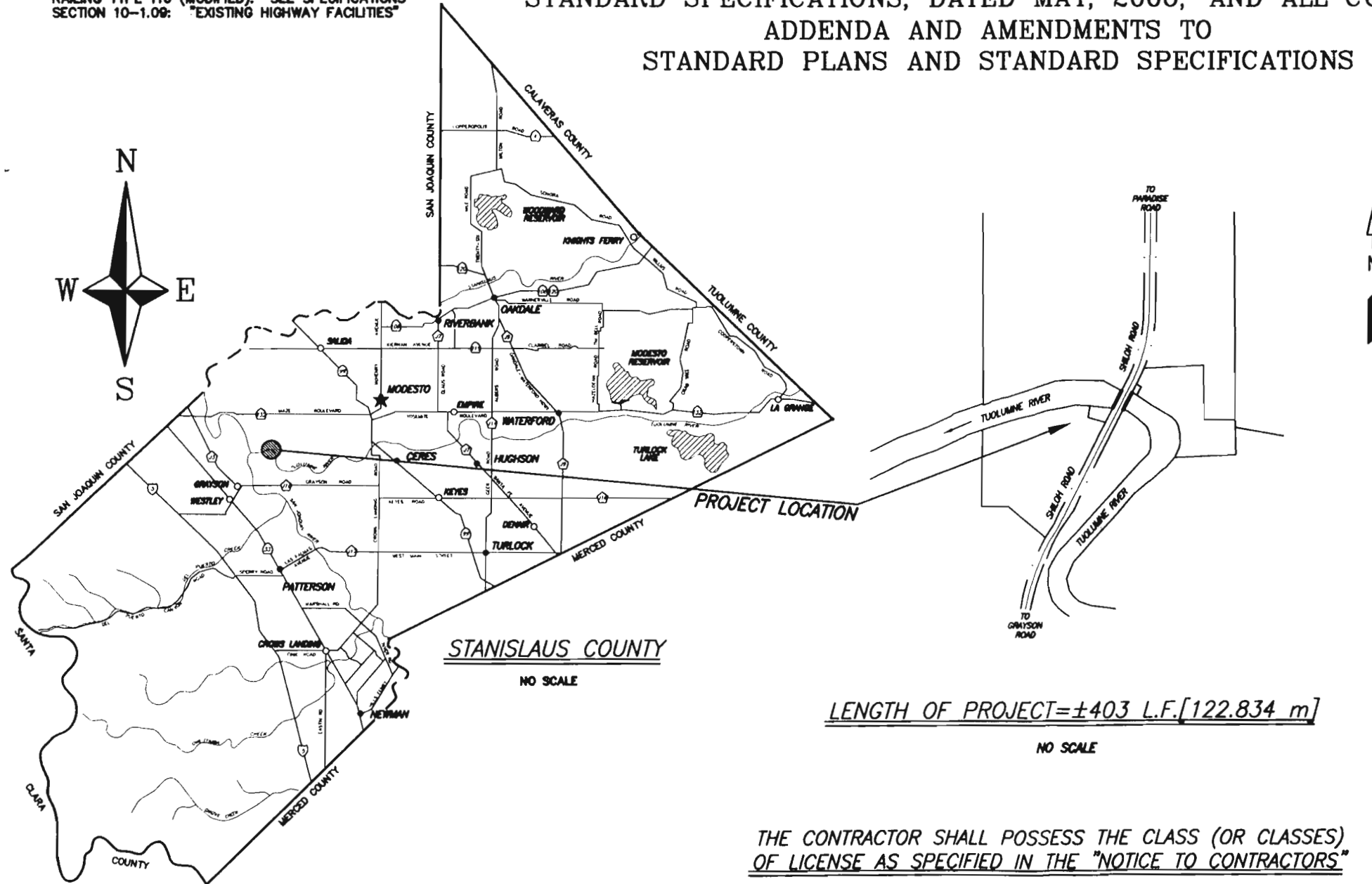
ADT (2001) = 1,986
ADT (2021) = 2,603
T = N/A
V = 55 MPH [90 KMH]

STATE OF CALIFORNIA
DEPARTMENT OF TRANSPORTATION
STANDARD PLANS

A10A
A10B
A62A
A62B
A62C
B0-13
RS1
RS2
T13
T17

COUNTY OF STANISLAUS

MATT MACHADO, PE
DIRECTOR OF PUBLIC WORKS



THE CONTRACTOR SHALL POSSESS THE CLASS (OR CLASSES)
OF LICENSE AS SPECIFIED IN THE "NOTICE TO CONTRACTORS"



STANISLAUS COUNTY
DEPARTMENT OF PUBLIC WORKS
ENGINEERING AND OPERATIONS DIVISION
1716 MORGAN ROAD - MODESTO, CA 95358



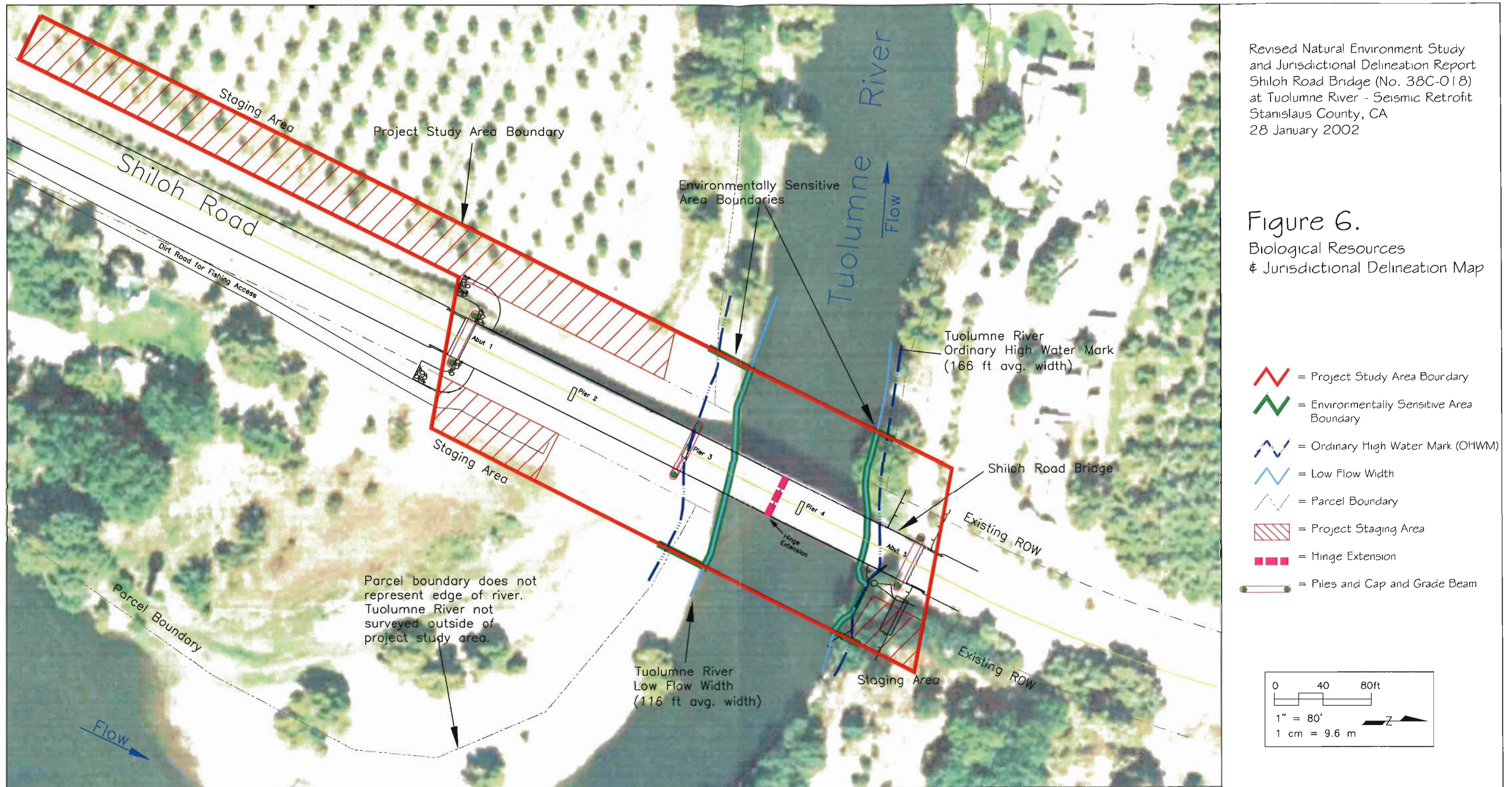
COVER
PLANS FOR THE SEISMIC RETROFIT CONSTRUCTION OF
SHILOH ROAD BRIDGE
AT TUOLUMNE RIVER
STANISLAUS COUNTY, CA

JOB NO. 9083
DATE 10/29/2008
DR BY: AY
CK BY: DL
SCALE AS SHOWN

SHEET NUMBER



Figure 6.
Biological Resources
& Jurisdictional Delineation Map



Jurisdictional Waters of the U.S. within the Project Study Area

Feature	Type	Area	Area of Temporary Construction Disturbance	Area of Permanent Discharge Below OHWM
Tuolumne River	waters of the U.S.	0.25186 ha (0.62243 ac)	654.3 m ² (7,044 ft ² ; 0.1617 ac)	9.66 m ² (104 ft ² ; 0.00239 ac)