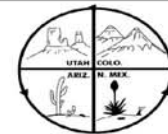


Pradera Pointe Subdivision Jurisdictional Tributary Watershed Map

- Jurisdictional Tributary
- JD_Wetland
- Watershed
- Pradera Pointe Boundary

U.S.G.S. Pagosa Springs 1:24000 Map - 1964



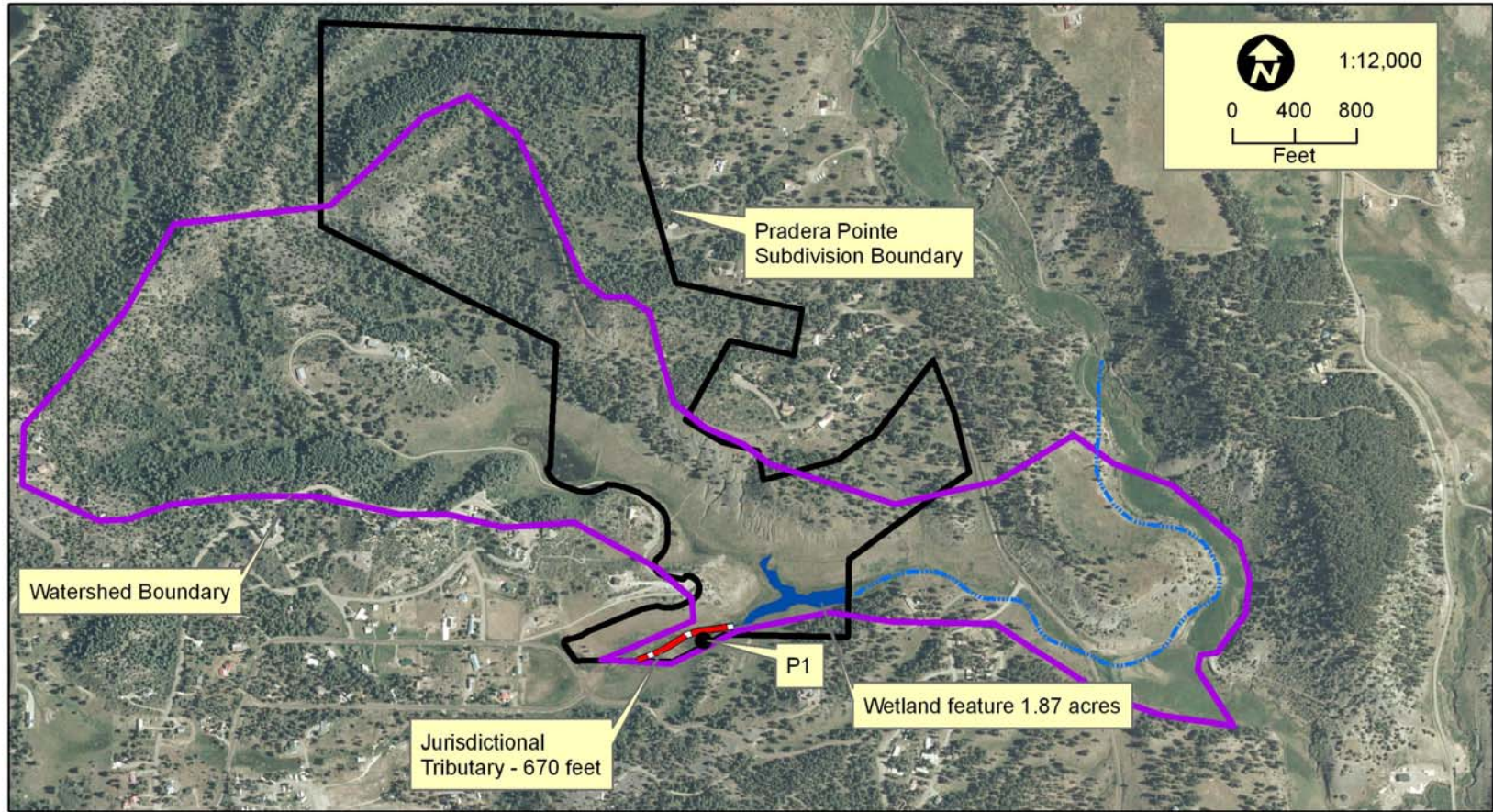
ECOSPHERE
ENVIRONMENTAL SERVICES

Archuleta County, CO





Watershed - 272 acres

UTM Zone 13 - NAD 83

3/3/2008



Pradera Point Subdivision Jurisdictional Tributary Watershed Map

-  Jurisdictional Tributary
-  JD_Wetland
-  Watershed
-  Pradera Point Boundary

Archuleta County NAIP Color Aerial - 2005



ECOSPHERE
ENVIRONMENTAL SERVICES

Archuleta County, CO

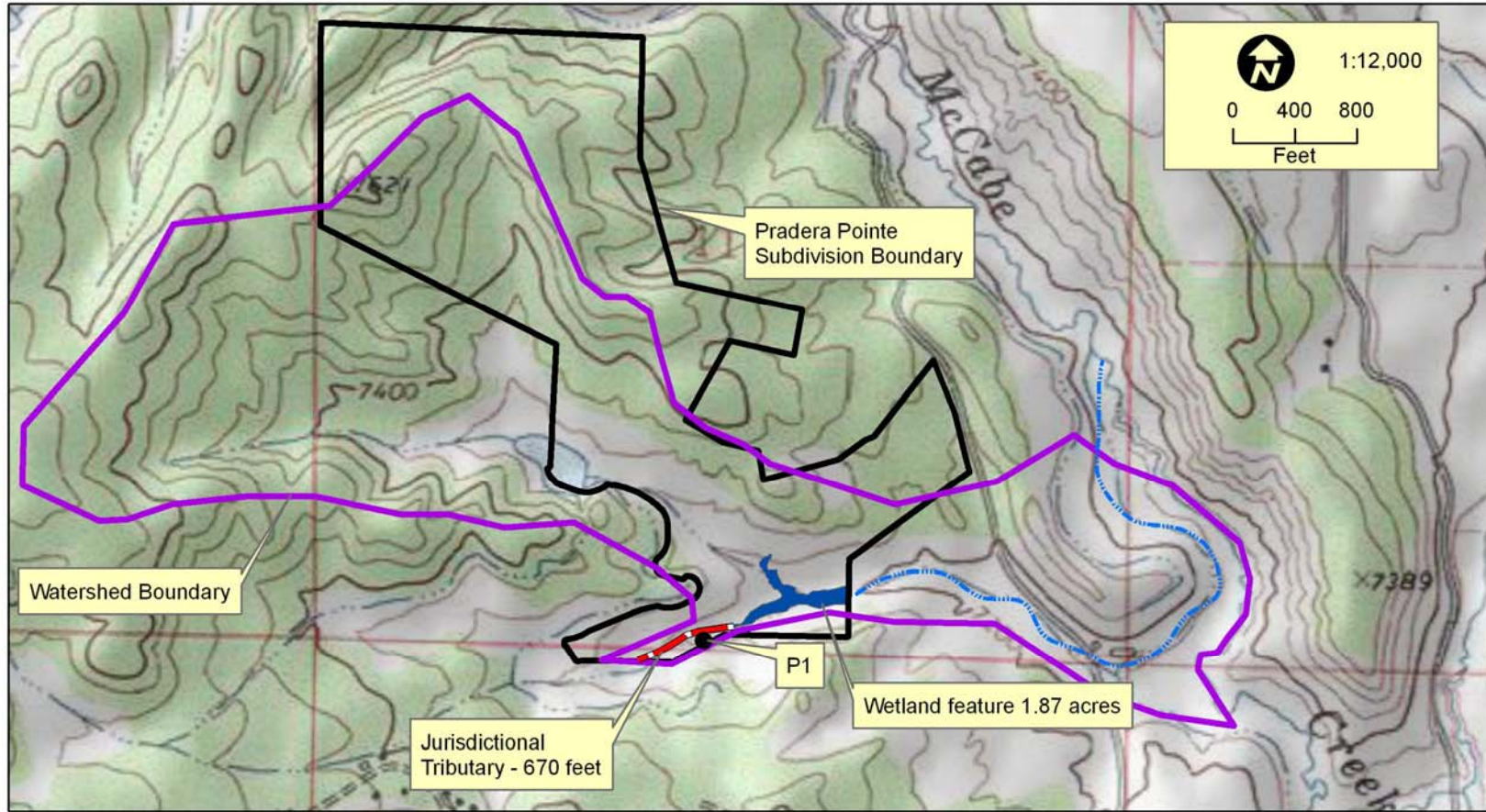
Watershed - 272 acres

UTM Zone 13 - NAD 83





3/3/2008



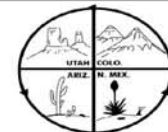
Photo Point 1. Looking southwest from Photo Point 1. Note existing sewer pipe parallels portion of channel. Channel varies from 1 to 3 feet deep and 1 to 3 feet wide.



Pradera Point Subdivision Jurisdictional Tributary Watershed Map

-  Jurisdictional Tributary
-  JD_Wetland
-  Watershed
-  Pradera Point Boundary

U.S.G.S. Pagosa Springs 1:24000 Map - 1964



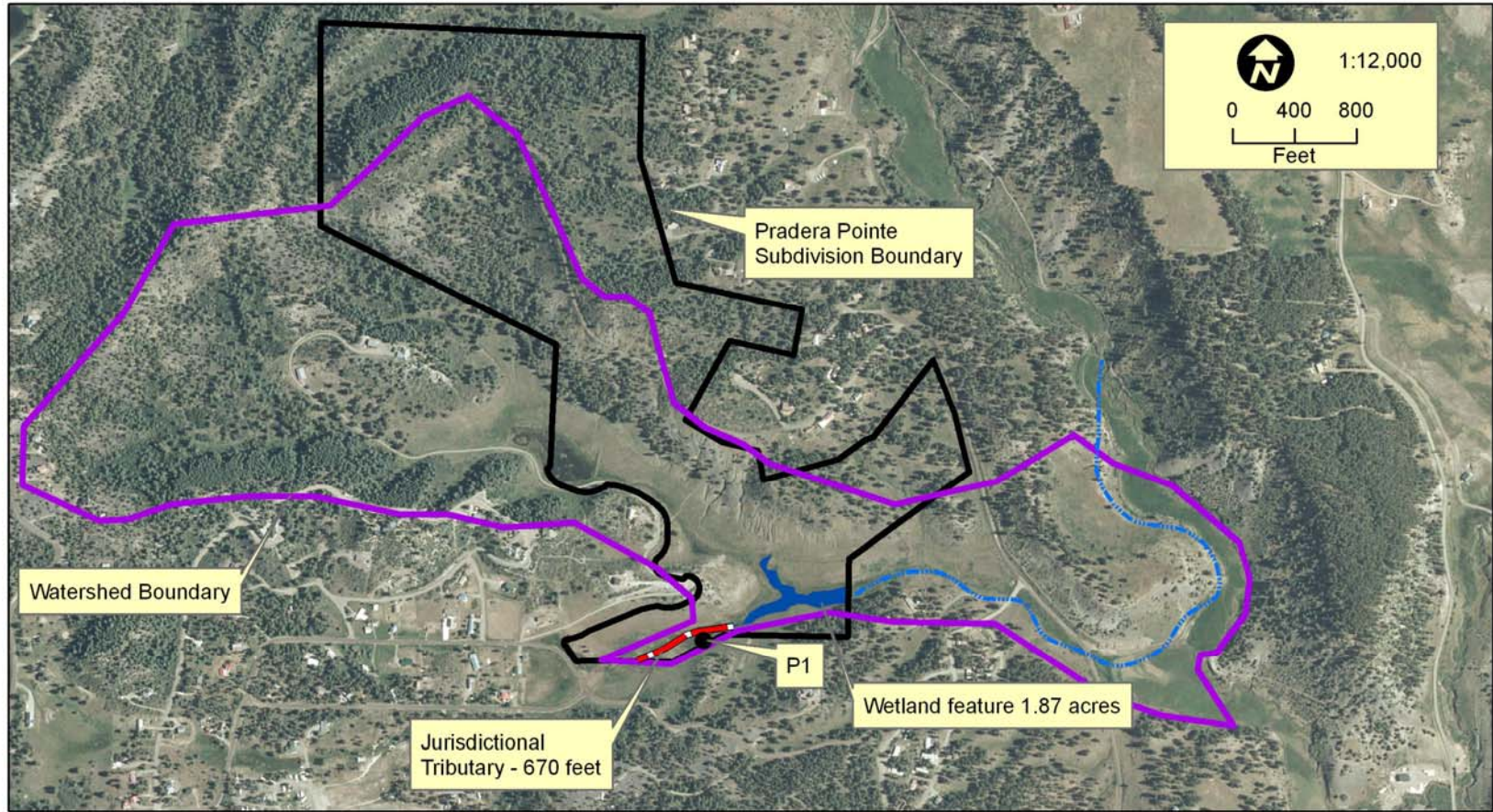
ECOSPHERE
ENVIRONMENTAL SERVICES

Archuleta County, CO





Watershed - 272 acres

UTM Zone 13 - NAD 83

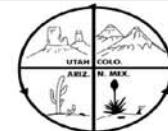
3/3/2008



Pradera Point Subdivision Jurisdictional Tributary Watershed Map

-  Jurisdictional Tributary
-  JD_Wetland
-  Watershed
-  Pradera Point Boundary

Archuleta County NAIP Color Aerial - 2005



ECOSPHERE
ENVIRONMENTAL SERVICES

Archuleta County, CO

Watershed - 272 acres

UTM Zone 13 - NAD 83

3/3/2008



Photo Point 1. Looking southwest from Photo Point 1. Note existing sewer pipe parallels portion of channel. Channel varies from 1 to 3 feet deep and 1 to 3 feet wide.