

US ARMY CORPS OF ENGINEERS

UPDATED MAP AND DRAWING STANDARDS SOUTH PACIFIC DIVISION REGULATORY PROGRAM

Prepared by Zachary Simmons
Regulatory Program Workshop
July 14, 2017

"The views, opinions and findings contained in this report are those of the authors(s) and should not be construed as an official Department of the Army position, policy or decision, unless so designated by other official documentation."



US Army Corps
of Engineers®



MAP AND DRAWING STANDARDS



US Army Corps of Engineers

- February 10, 2016
 - Improve *Quality* and *Consistency*
 - *Simplify* Review and Processing
 - Applies to **all** submittals to



Exceptions determined on a case-by-case basis

- *Less than 0.10 acre permanent impacts*
- *Limited Financial Resources (grant funding for restoration)*
- *Emergencies*



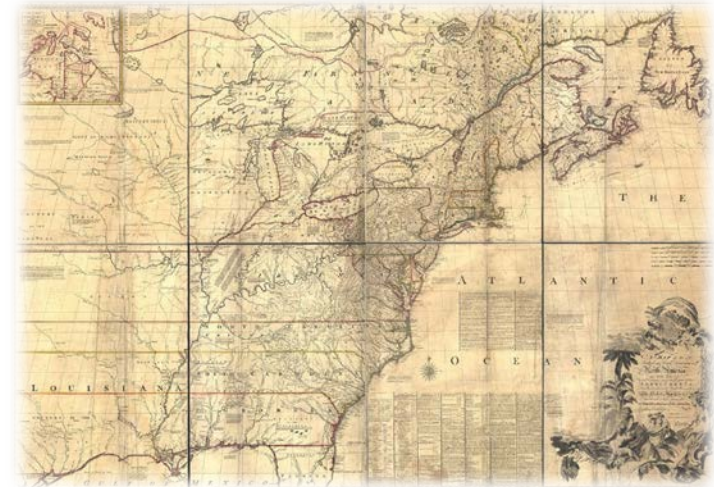
US Army Corps
of Engineers ®



1. GENERAL STANDARDS

a. Must include:

- Location (Vicinity)
- Plan View Maps
- Cross-sectional views
- Delineation maps showing
 - Project area,
 - Staging areas,
 - Disposal sites,
 - Access routes, and
 - Mitigation sites



b. Same Orientation for all maps (North up)

d. Indicate reference elevation datum



US Army Corps
of Engineers ®



1. GENERAL STANDARDS

f. Base Map:

- Aerial photographs must be orthorectified
- Date and source of imagery identified on map
- Date of imagery should be when aquatic resources are visible (e.g. wet season)
- At least one map showing topography



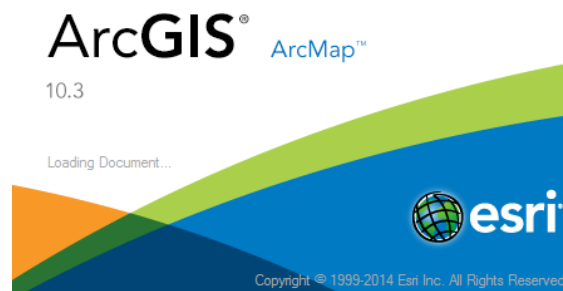
US Army Corps
of Engineers ®



1. GENERAL STANDARDS

g. Format:

- Submit both paper and electronic versions,
 - Adobe PDF
- Fold larger maps to fit within an 8.5" x 11"
- GIS data and associated metadata
 - ESRI shapefiles



US Army Corps
of Engineers ®



1. GENERAL STANDARDS

h. Plan View:

- Two control points with Lat/Long
- North Arrow
- Bar and text scale, not to exceed 1" = 400'
- Legend (Area in parenthesis for each item)
- Date prepared/revised
- Name & Organization of preparer
- Appropriate landmarks

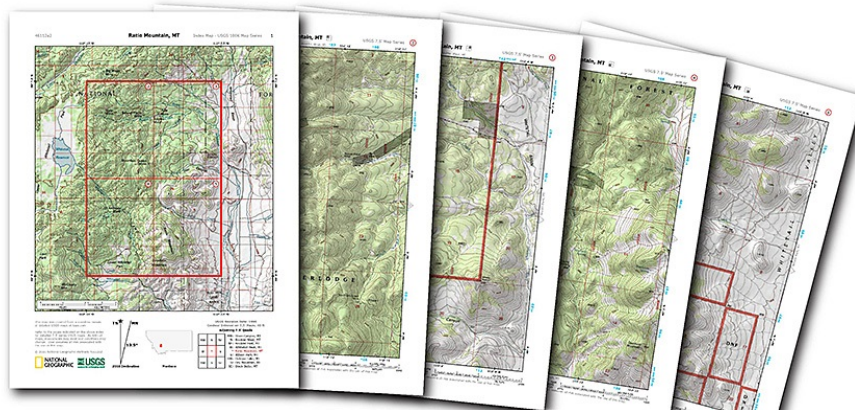


US Army Corps
of Engineers ®



2. LOCATION (VICINITY) MAPS

- a. USGS 7.5-minute quadrangle basemap
- b. Does not need to be to scale
- c. Include north arrow
- d. Project location clearly marked
- e. Include roadways and landmarks



US Army Corps
of Engineers ®



3. PROPOSED PROJECTS

- a. Show all fill, structures, limits of work within all potential waters of the U.S.
- b. Show delineated waters within project area
- c. Label all impacts to waters
- d. Identify if Permanent or Temporary
- g. Completed ORM impacts sheet



US Army Corps
of Engineers ®



4. POST CONSTRUCTION DRAWINGS (AS-BUILT PLANS)

- a. Both plan view and cross-sectional view
- b. Same size and alignment as authorized grading plans
- c. Show deviations from authorized plans in red



US Army Corps
of Engineers ®



5. DELINEATION MAPS

- a. Plan view
- b. Cross-sectional upon request
- c. Clearly identify survey area
- d. Show location and extent of all potential waters of the U.S.
 - Each water type must be differentiable
- e. Location of all paired data points
- f. OHWM widths



US Army Corps
of Engineers ®



5. DELINEATION MAPS

- i. Identify Ordinary High Water Mark
- j. Each polygon must be clearly labeled
 - Feature type and unique number (i.e. SW1, SW2, VP1, VP2, etc.)
- k. Completed ORM Aquatic Resources sheet
- l. GIS Data with same polygons names and metadata text file



US Army Corps
of Engineers ®





Figure X:
Delineation of Wetlands and
Other Waters of the U.S.
for the Hypothetical Project Site

Legend

- Map Reference Point
- Survey Area Boundary (X.XX Acres)
- Upland Sampling Point
- Wetland Sampling Point
- Topography (10-foot Contour Interval)
- Wetlands (X.XX acres)**
 - Vernal Pool (X.XX acres)
 - Wetland (X.XX acres)
- Other Waters (X.XX acres)**
 - Ephemeral Drainage (X.XX acres)
 - Intermittent Stream (X.XX acres)
 - Perennial Stream (X.XX acres)

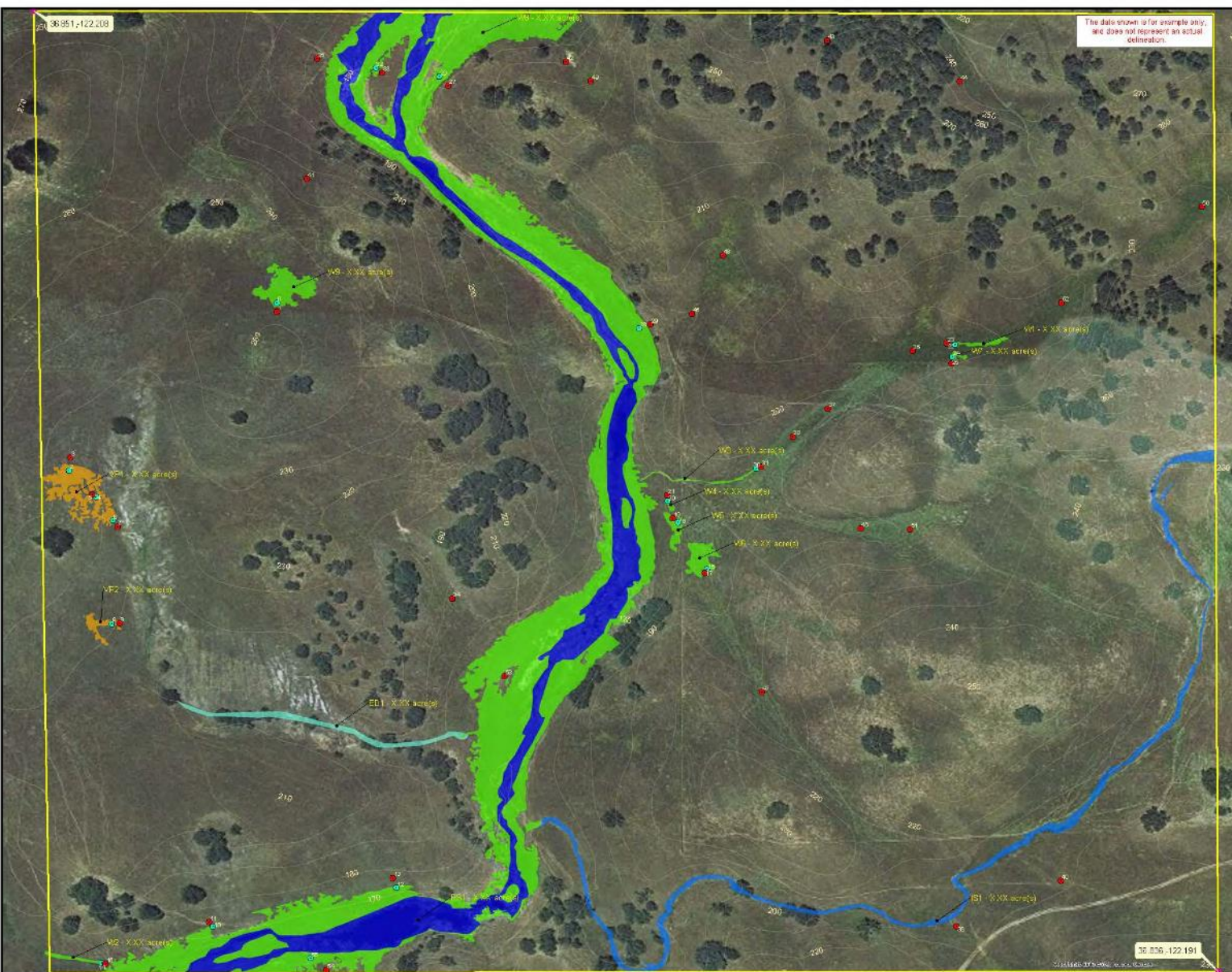


250 125 0 250
Feet

Coordinate System: NAD 1983 UTM Zone 10N
Projection: Transverse Mercator
Datum: North American 1983
Vertical Datum: NAVD88, U.S. Feet
1 inch = 250 feet

Created on April 30, 2013
Revised on February 8, 2016

Made in accordance with the
*Updated Map and Drawing Standards for the
South Pacific Division Regulatory Program,*
as amended on February 10, 2016, by:
Jason Deters, Project Manager
Enforcement and Special Projects Unit
U.S. Army Corps of Engineers
South Pacific Division
Sacramento District, Regulatory Division
1325 J Street, Room 1350
Sacramento, California 95814-2922



6. MITIGATION PLANS

- a. Both plan view and cross-sectional view
- b. Clearly differentiable Aquatic Resource type and Mitigation type
- c. Each polygon must be clearly labeled with unique name
- d. Shown Relative to other landscape features or Habitat types
- e. Completed ORM mitigation sheet



US Army Corps
of Engineers ®





Figure X:
Mitigation Plan and
Long-term Preservation Map for the
Hypothetical Mitigation Project Site

Legend

- Project/Preserve Boundary (X.XX Acres)
- Topography (10-foot Contour Interval)
- Map Reference Point

Pre-project Delineation

Waters Type

- Open Water (X.XX acres)
- Vernal Pool (X.XX acres)
- Wetland (X.XX acres)

Proposed Mitigation

Mitigation Type

- Open Water Enhancement (X.XX Acres)
- Vernal Pool Establishment (X.XX acres)
- Wetland Establishment (X.XX acres)
- Wetland Re-establishment (X.XX acres)
- Wetland Rehabilitation (X.XX acres)



250 125 0 250
Feet

Coordinate System: NAD 1983 UTM Zone 10N
Projection: Transverse Mercator
Datum: North American 1983
Vertical Datum: NAVD88, U.S. Feet
1 inch = 250 feet

Created on April 30, 2013
Revised on February 8, 2016

Made in accordance with the
Updated Map and Drawing Standards for the
South Pacific Division Regulatory Program,
as amended on February 10, 2016, by:
Jason Deters, Project Manager
Enforcement and Special Projects Unit
U.S. Army Corps of Engineers
South Pacific Division
Sacramento District, Regulatory Division
1325 J Street, Room 1350
Sacramento, California 95814-2922

7. MITIGATION MONITORING REPORT

- a. Identify each mitigation area as indicated in Sec 6. Mitigation Plans
- b. Show sampling present in report
 - Locations
 - Extent of sampling points
 - Transects, quadrats, etc...



US Army Corps
of Engineers ®



8. GROUND PHOTOGRAPH MAP

- a. Any ground photos must be accompanied by a map of photo points
- b. Labeled with unique name and Compass direction (arrow or name, e.g. P1-NW, or P1-315°)
- c. Include a table
 - Name *and date* of photo
 - Coordinates (Lat/Long)
 - Compass direction
 - Brief explanation of relevance

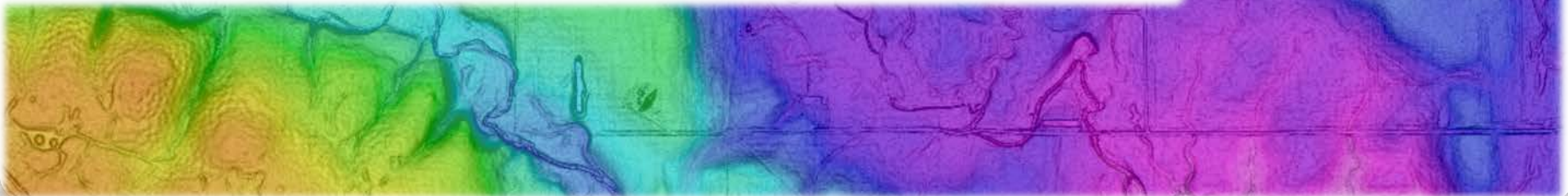
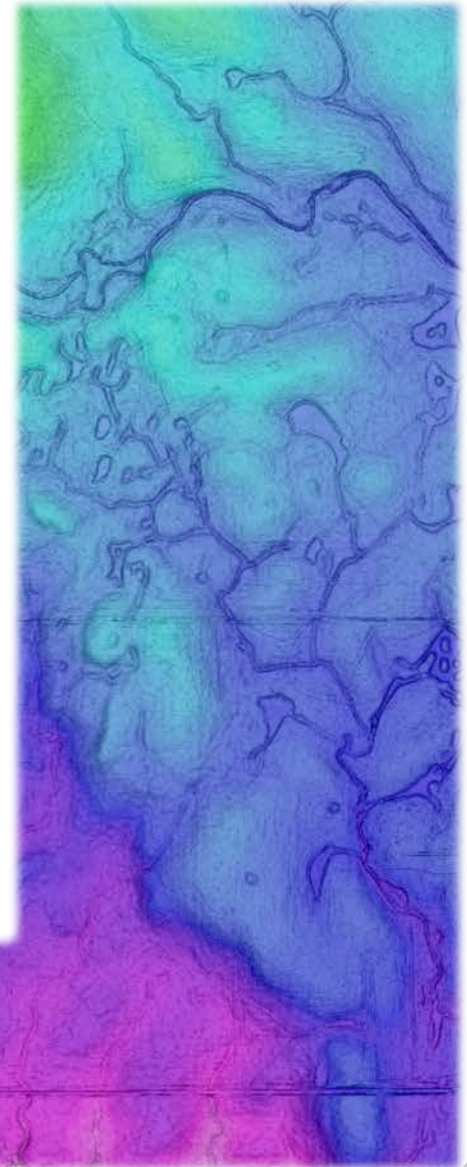


US Army Corps
of Engineers ®



ADDITIONAL HELPFUL INFO

- Topographic maps
- LIDAR (Light Detection and Ranging)
- NWI (National Wetland Inventory)
- Satellite Photos
- Aerial and Ground Photos
- Floodplain Maps



Questions?





CONTACT INFORMATION

20

Sacramento District Regulatory Office:

Main: 916-557-5250

FAX: 916-557-7803

<http://www.spk.usace.army.mil/Missions/Regulatory.aspx>

Zachary Simmons: 916-557-6746

Zachary.M.Simmons@usace.army.mil