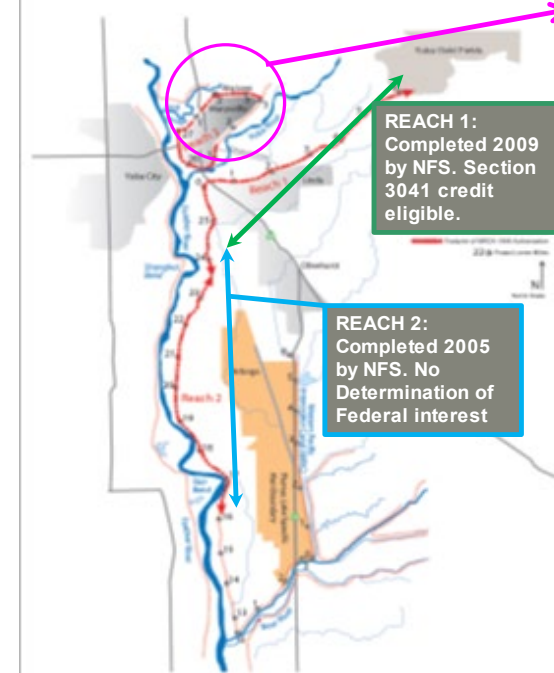




- **Project Name:** Yuba River Basin, Marysville Ring Levee (MRL), CA
- **Congressional District:** Doug LaMalfa (CA-1)
- **Business Line:** Flood Risk Management
- **Authorization:** Section 209 of Flood Control Act of 1962 (Pub. L. 87-874) as modified by Section 202 of Water Resource Development Act of 2020 (Pub. L. 116-260)
- **Phase:** Construction
- **Problem Statement:** The City of Marysville was built between the Feather and Yuba Rivers and is at high risk for flooding during significant storm events. The area has experienced seven major floods since 1940. Despite modifications for flood risk reduction over the years, the area is still vulnerable to catastrophic flooding as demonstrated by the floods of February 1986 and January 1997, with estimated damages of \$95 million and \$82.4 million, respectively.
- **Project Description:** The MRL project is in Yuba County, approximately 50 miles north of Sacramento, California. Marysville is home to 12,000 people, the region's only level-3 trauma hospital, two state highways, and two Union Pacific Railroad lines. The authorized plan included 3 Reaches. Reaches 1 & 2 were completed by the Non-federal Sponsor. Reach 3, the MRL, a separable element of the authorization, included levee improvements, such as construction of slurry walls, widening or re-aligning the levee, and installation of landside seepage berms. The MRL project began in 2010 and will continue through 2028. Construction was completed for Phase 1 2014, Phase 4A ---2017, Phase 2A North--- 2018, Phase 2A South ---2019, Phase 2C--- 2020, and Phase 3--- 2022. SPK received \$48M in additional BBA-18 funding on 16DEC22 to construct Phase 2B Cutoff Wall and Highway 70 Seepage Berm FY26. BBA18 funds were allocated to complete a higher-level risk assessment to be completed by 30DEC24.
- **Economics:** BCR 1.4 @ 7%
- **Cost:** Total Project Costs: Regular funds \$243.6M and BBA18 Supplemental funds \$61.6M (TPC-January 2022)
- **Cost Share:** 65% Federal / 35% Non-Federal; Supplemental Funds are not cost shared

HISTORICAL OVERVIEW
YUBA BASIN MARYSVILLE RING LEVEEREACH 3- MARYSVILLE
RING LEVEE: Partially
constructed

1997 – Flood
 1998 – Chief's Report
 1999 – WRDA authorization
 2000 – LRR initiated to evaluate 97 Flood indicated need for reauthorization
 2005 – GRR (Rescoped to EDR)
 2007 – WRDA authorization
 2009 – Marysville Separable Element decision
 2010 – EDR / PACR
 2012 – PADR / IDR of Sponsor Const. Work
 2014 – Phase 1 Construction Complete
 2014 – ASAA approval of Section 3041 Credit
 2015 – PPA with Creditable TPC and CCB

Consistent Construction Progress

2017 – PH4A Construction Complete
 2018 – PH2AN Construction Complete
 2019 – PH2AS Construction Complete
 2020 – PH2C Construction Complete
 2022 – PH3 Construction Complete

LEGEND

- Completed Phase
- Remaining Work 2010 EDR Approved Project
- Levee Curve to tie into Existing Levee
- Segments
- Safety Hazards (Probability of Failure Given Loading)

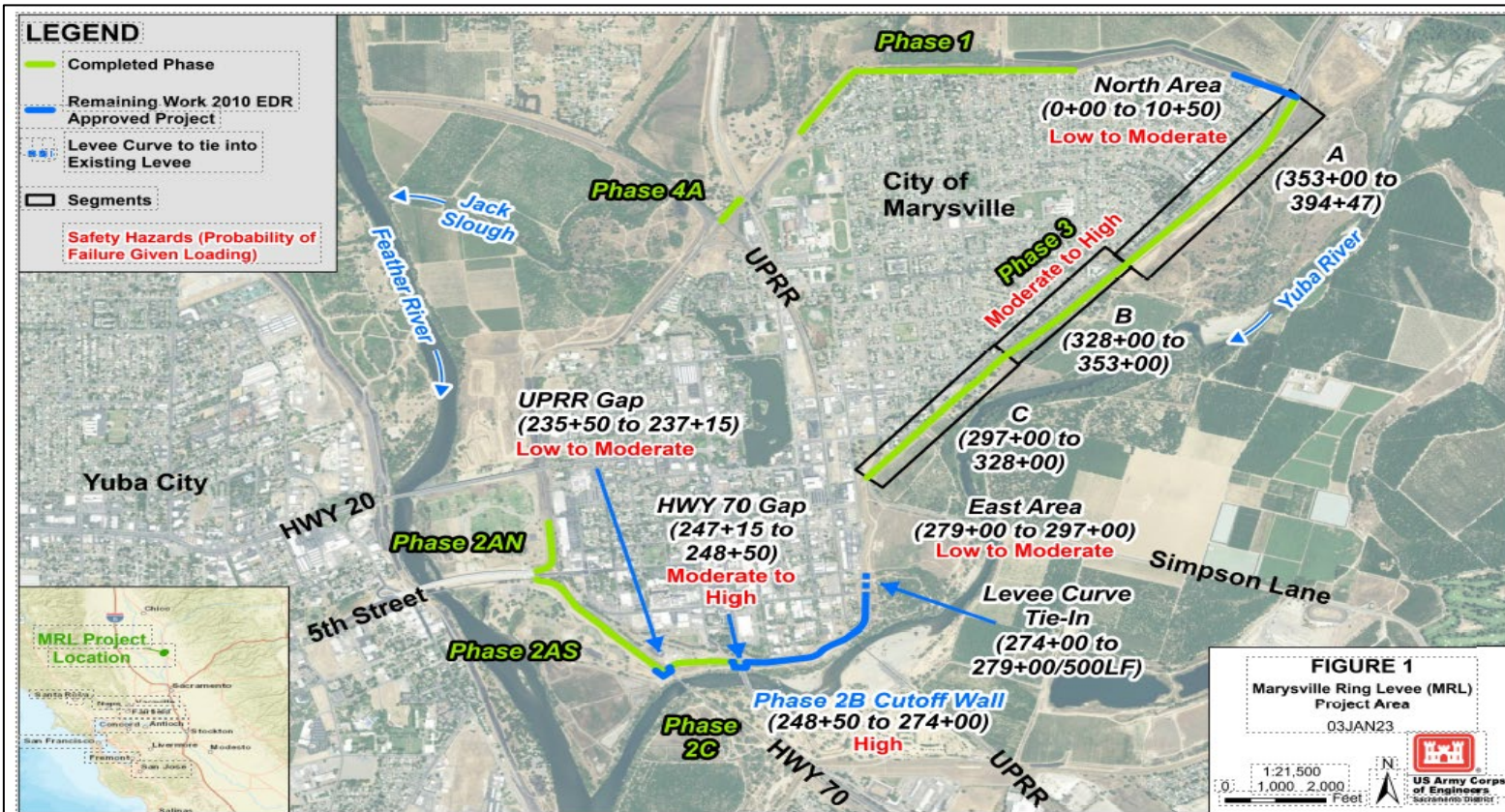


FIGURE 1
 Marysville Ring Levee (MRL)
 Project Area
 03JAN23

1:21,500
 0 1,000 2,000 Feet
 US Army Corps of Engineers
 Sacramento District



Visit our **CONGRESSIONAL PORTAL**
 for detailed project information



1325 J St
 Sacramento, CA 95814



(916) 557-5100



spk-pao@usace.army.mil



spk.usace.army.mil

AS OF 5FEB24



- **Non-Federal Sponsor:** Central Valley Flood Protection Board, Department of Water Resources, Marysville Levee District
- **Current Issues:** No cost, scope, or schedule risks.
- **Risks / Mitigation Strategy:** PDT meetings conducted bi-weekly to communicate any risk potentials.
- **Schedule---** Project:
 - Phase 2B Cutoff Wall
 - Start Construction Phase 2B Cutoff Wall: 15APR23
 - Complete Construction Phase 2B Cutoff Wall: 28NOV25
 - Highway 70 Seepage Berm
 - Award Contract: 27NOV23
 - Start Construction Highway 70 Seepage Berm: 15APR24
 - Complete Construction Highway 70 Seepage Berm: 28NOV25
 - Complete Project Risk Assessment: 30DEC24
 - Project Physically Complete: 30AUG27
 - Project Fiscally Complete: 05SEP28

