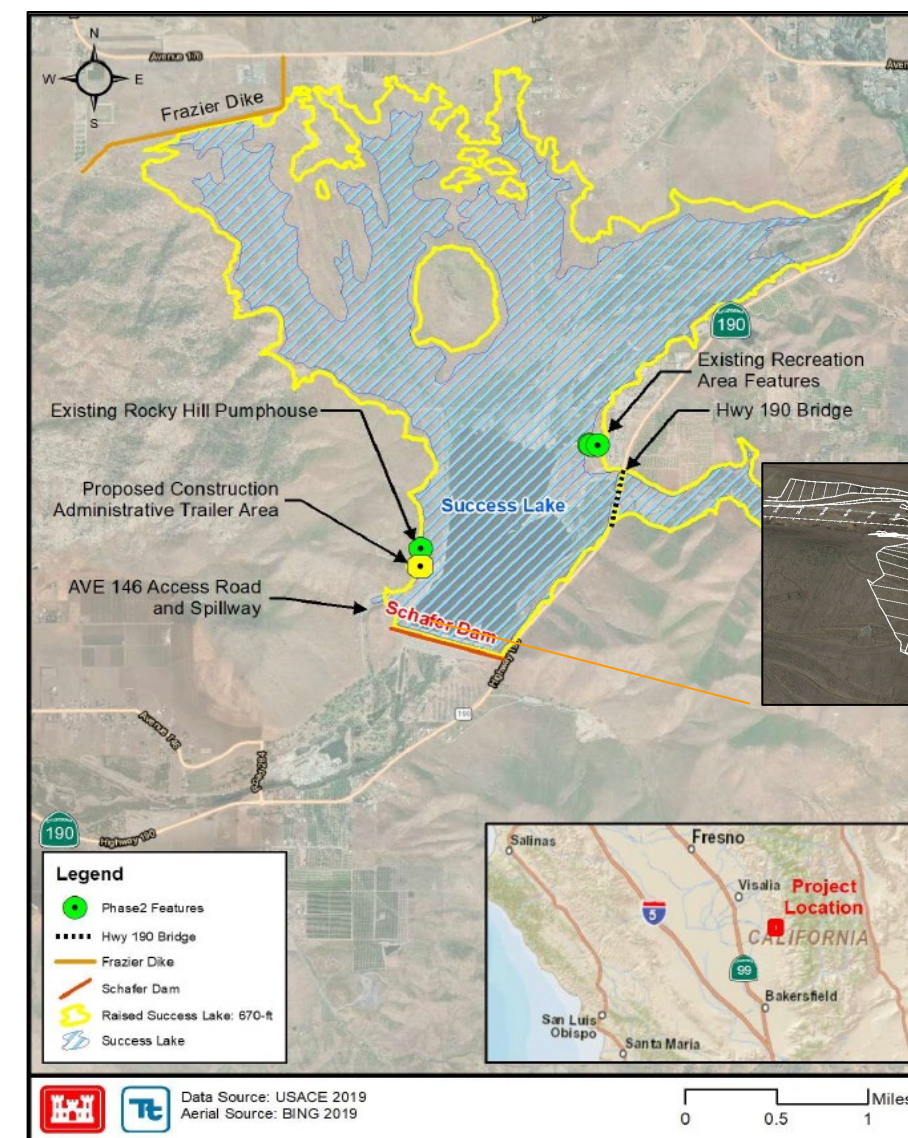


- **Project Name:** Tule River Spillway Enlargement Project, Tulare County, California
- **Business Line:** Flood Risk Management
- **Authorization:** Flood Control Act, 1936 (P.L. 74-738), Sec. 6; Water Resources Development Act 1999 (P.L. 106-53), Sec. 101(b)(4).
- **Phase:** Phase 2 Construction
- **Problem Statement:** In April 2003, the Lower Tule River Irrigation District, on behalf of itself, the City of Porterville, the Tulare Lake Basin, and the Counties of Tulare and Kings, entered into an agreement as the local sponsor. Dam safety seismic concerns put the project on hold until mitigation measures could be identified. The U.S. Army Corps of Engineers (USACE) completed a Baseline Risk Assessment and presented it to the Dam Safety Oversight Group (DSOG) in July 2014. The DSOG determined that both seismic issues and seepage issues were less severe than previously thought, and thus reclassified the dam from Dam Safety Action Classification (DSAC) 2 to DSAC 3 in July 2018. In May 2018, USACE completed the Level 3 Economic Update which certified the cost estimate and overall benefits for the project.
- **Project Description:** Raise spillway sill at the Richard Schafer Dam by the construction of a 10-foot-high, 365-foot-long, curved ogee weir across the Success Lake spillway. Project also includes the relocation of Spillway Road; SCE Pole Raise; armoring of Hwy 190 Bridge and Frazier Dike; floodproofing restrooms; construction of a new high-water boat ramp; relocation of Rocky Hill Recreation Area storage tank, well, and metal shed; construction of a seepage berm; relocation of SCE utilities; and construction of an earthen berm to protect the Tule Recreation Area well and storage tank. The Project plan includes the acquisition and management of approximately 832 acres of land for environmental mitigation.
- **Economics:** BCR 1.1 @ 2.75%; 0.53 @ 7%
- **Cost:** Total project cost (March 2022) = \$139,500,000
- **Cost Share:** 100% Federal. Project was fully funded to completion under the Bi-Partisan Budget Act of 2018 (PL 115-123).
- **Schedule:**
 - Phase 2 Construction Completion: June 2024
 - Environmental Mitigation Contract Award: July 2023
 - Project Physical Completion: September 2028
 - Project Fiscal Completion: December 2028



- **Non-Federal Sponsor:** Central Valley Flood Protection Board, Lower Tule River Irrigation District (LTRID)
- **Risks / Mitigation Strategy:**
 - On-site batch plant establishment and production blasts are on the critical path of the Project Completion. Mass concrete work can't be completed, and construction schedule could be affected. Project total cost could be affected. Contractor is in the process of retrofitting the batch plant to meet the contractual requirement. USACE PDT is monitoring the blasting very closely and requiring blasting consultant on site during the production blasts.
 - NFS's cash flow is limited in acquiring properties. Properties acquisition might not be complete by the time of Phase 2 construction completion and might impact the Lake operations. USACE Team is reviewing the NFS' reimbursement requests, including the requested \$3.6M for Southern California Edison's (SCE) transmission and distribution work. Waiting on title documents for final AOC before processing SCE reimbursement package.
- **Other Project Information:**
 - Phase 1 construction was completed on 28 February 2022 and is in the process of Closeout. As of 07 March 2023, Phase 2 construction is 10% fiscally complete and PDT is tracking 09 February 2024 as the construction completion date.
- **Schedule:**
 - Phase 2 Construction
 - Contract Award: December 2021
 - NTP: March 2022
 - Construction Start: July 2022
 - Construction Completion: June 2024
 - Environmental Mitigation Contract
 - RTA: April 2023
 - Quote/Proposals due: June 2023
 - Contract Award: July 2023
 - Project Physical Completion: September 2028
 - Project Fiscal Completion: December 2028



Spillway Model With Ogee Weir



Ogee Weir Physical Model

