

Project Information

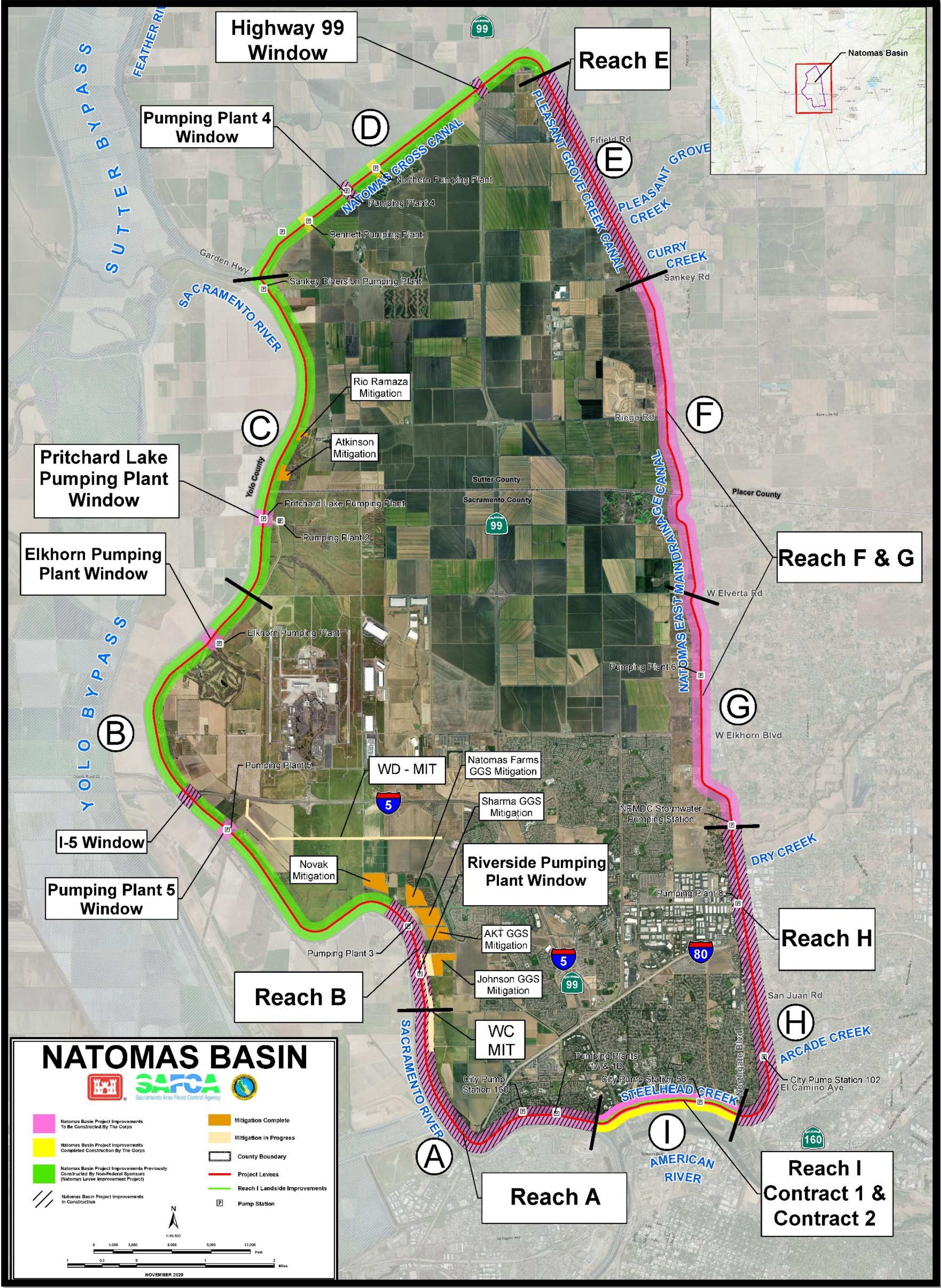
BACKGROUND

The Natomas Basin is located in Sacramento and Sutter counties which is one of the most at-risk areas in the nation for catastrophic flooding. The Natomas Basin is protected from flooding by a continuous 42-mile ring levee system bounded to the north by the Natomas Cross Canal, to the west by the Sacramento River, to the south by American River, and to the east by the Natomas East Main Drainage Canal and the Pleasant Grove Creek Canal (PGCC). A catastrophic failure of the levee system surrounding the Natomas community could threaten at least 100,000 lives, cause up to \$8.5 billion in property damage and shut down the Sacramento International Airport and two of California’s busiest highways. The USACE, Sacramento District, has divided the Natomas Basin levee system into nine Reaches (A - I) for planning, design, and construction purposes.

PROJECT STATUS

PROJECT	STATUS	% COMPLETION (D-Design; C-Construction)
Reach A	Active Construction	25% (C)
Reach B	Active Construction	99% (C)
Reach C	Completed	100% (C)
Reach D	Completed	100% (C)
Reach E	Active Construction	50% (C)
Reach F&G	Design Phase; Construction expected FY27	95% (D)
Reach H	Completed	100% (C)
Reach I	Contract 1 – Completed Contract 2 – Design Phase; Construction expected FY26	100% (C) 95% (D)
Windows:		
Pumping Plant #4	Active Construction	95% (C)
Pumping Plant #5	Design Phase; Construction expected FY26	95% (D)
I-5 Window	Closeout Phase	95% (C)
Highway 99	Design Complete; Construction FY24	100% (D) 0% (C)
Mitigation:		
Western Drain (WD)	Design Phase; Construction expected FY26	25% (D)
Woodland Corridor (WC)	Active Mitigation	20% (C)

Map of Project Area



Visit our **CONGRESSIONAL PORTAL** for detailed project information

1325 J St  
Sacramento, CA 95814

(916) 557-5100

spk-pao@usace.army.mil

spk.usace.army.mil