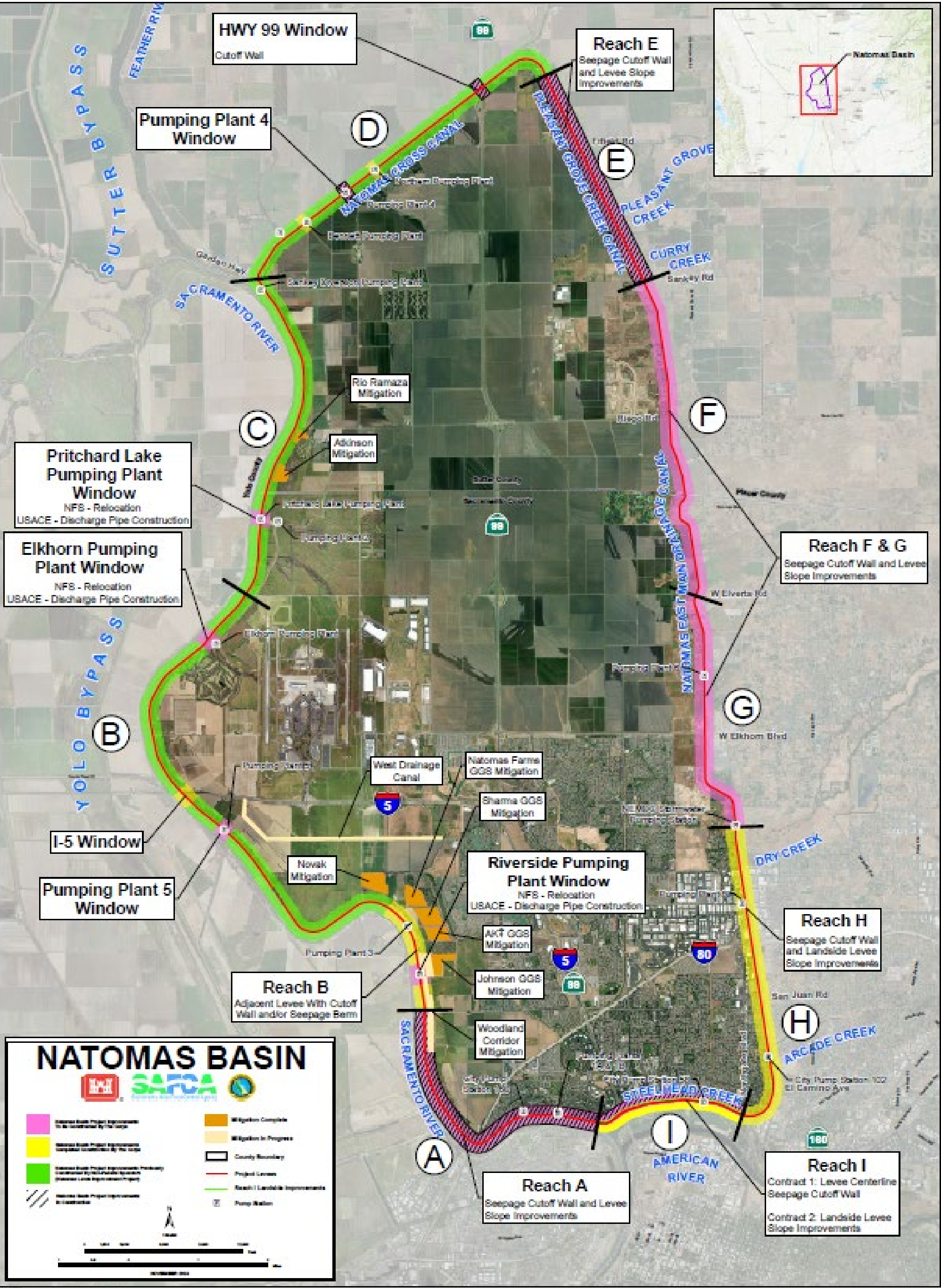


The Natomas Basin includes portions of the counties of Sacramento and Sutter as well as a portion of the City of Sacramento. The basin is protected by 42 miles of ring levee divided into nine reaches. The non-Federal Sponsors completed construction on 18 miles under the Natomas Levee Improvement Program (NLIP) in advance of the Authorized Project. Levees are along the Sacramento and American Rivers, the Natomas Cross Canal (NCC), the Pleasant Grove Creek Canal (PGCC), and the Natomas East Main Drainage Canal (NEMDC).

ECONOMIC SUMMARY	
Oct 22 Price Levels, 2.25% Discount Rate (\$1000s)	
Investment Costs	
Flood Risk Management First Costs	\$1,425,487 (FY22 price level)
Interest During Construction	\$49,126
Total	\$1,474,613
Average Annual Cost	
Interest and Amortization	\$49,427
OMRR&R	\$6,464
Total	\$55,891
Average Annual Benefits	\$661,688
Net Annual Flood Risk Management Benefits	\$605,797
Benefit to Cost Ratio	5.4-to-1 @ 7% discount rate

PROJECT STATUS	
PED	Reach B Pumping Plant #5 – 100% Design Phase (Construction start FY26) Reach F&G – 100% Design Phase (Construction start FY27) Reach I Contract 2 -- Final Design Phase (Construction start FY26) Named Pumping Plants – 65% Design Phase (Construction start FY 27) West Drainage Canal – 65% Design Phase (Construction start FY28)
CONSTRUCTION	Reach A – Expected Completion FY28 Reach E – Expected Completion FY26 Reach D Pumping Plant #4 – Expected Completion FY26 Reach D Hwy 99 – Expected Completion FY26
CLOSEOUT	Reach B – Completed FY24 Reach B, I-5 Window -- Completed FY24 (Litigation) Reach H – Completed FY24
COMPLETED	Reach I Contract 1 (2023)



Visit our **CONGRESSIONAL PORTAL**
for detailed project information



1325 J St
Sacramento, CA 95814



(916) 557-5100



spk-pao@usace.army.mil



spk.usace.army.mil

AS OF 15APR2025

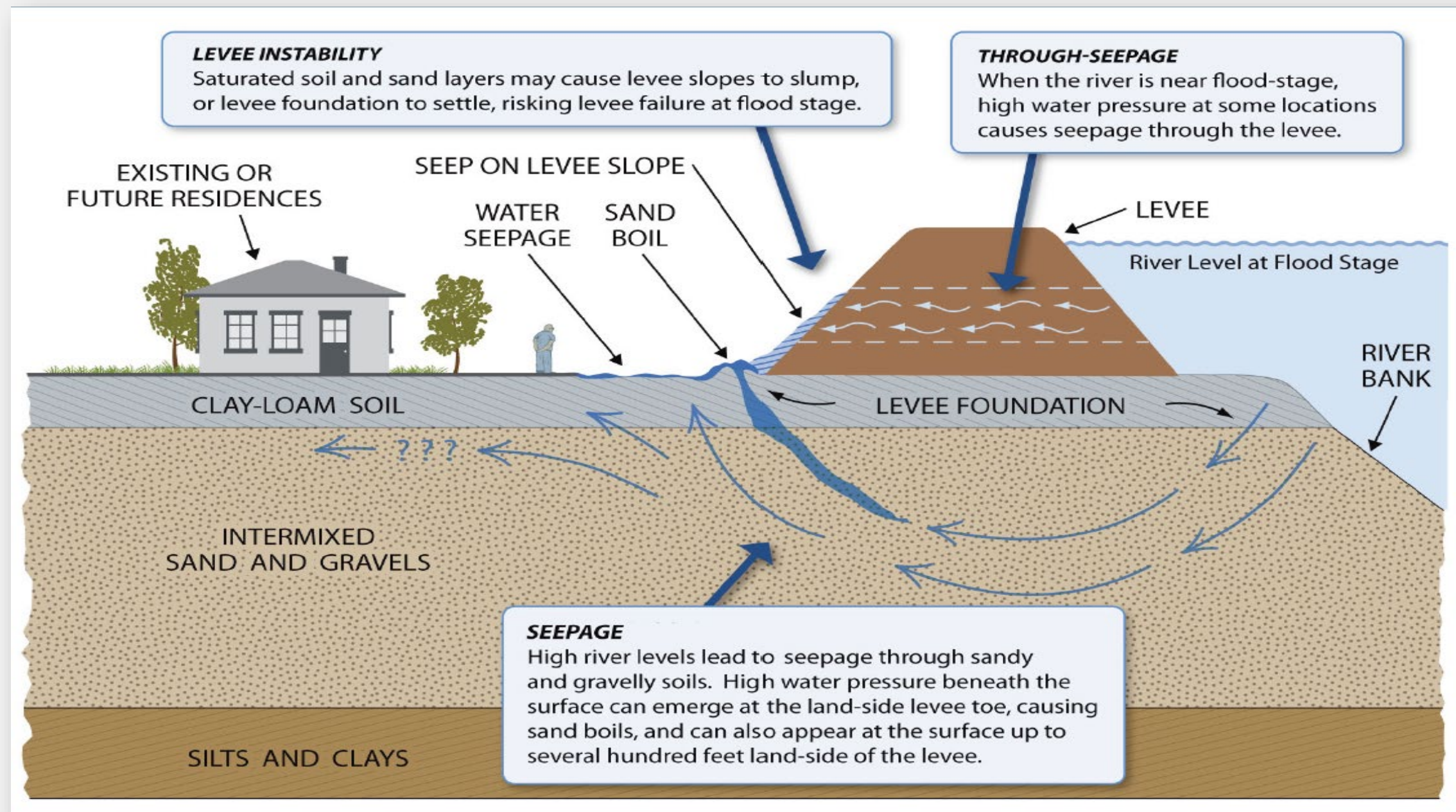


US Army Corps
of Engineers

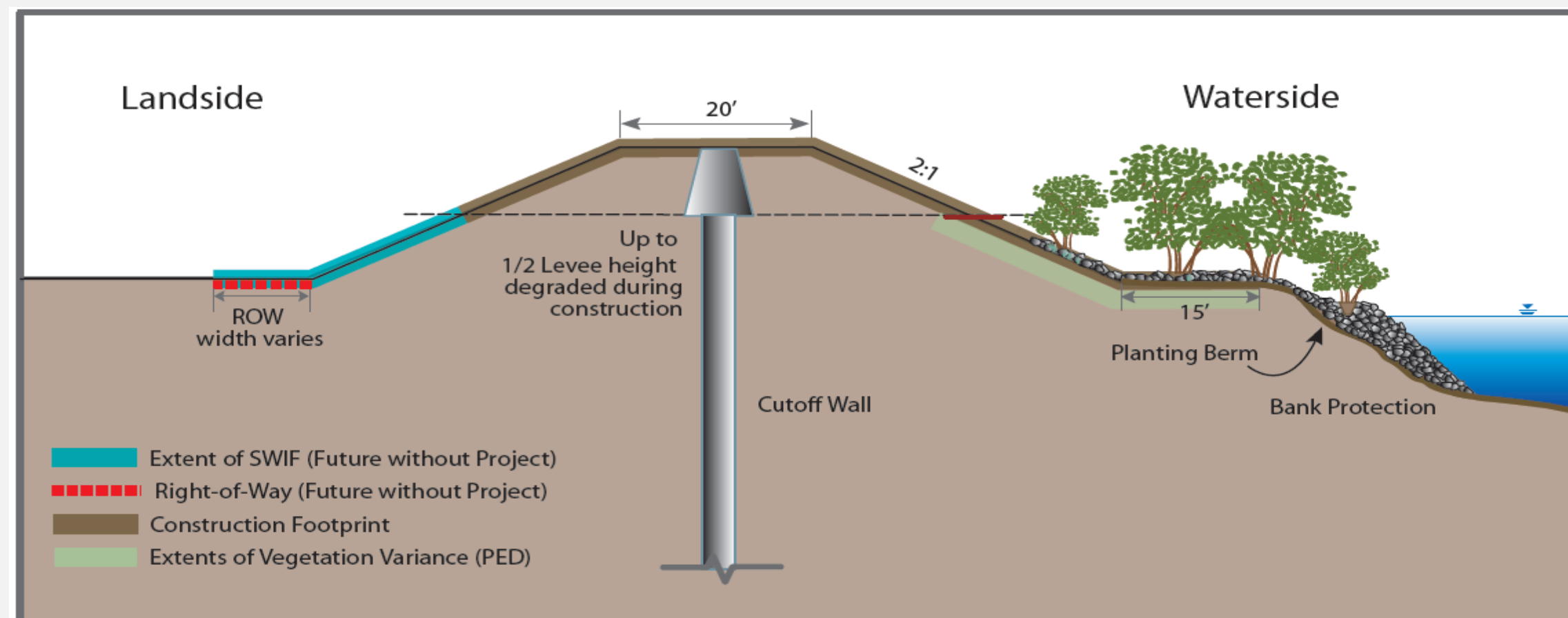
SACRAMENTO DISTRICT

PROJECT PLACEMAT

Typical Levee Seepage and Stability Problems

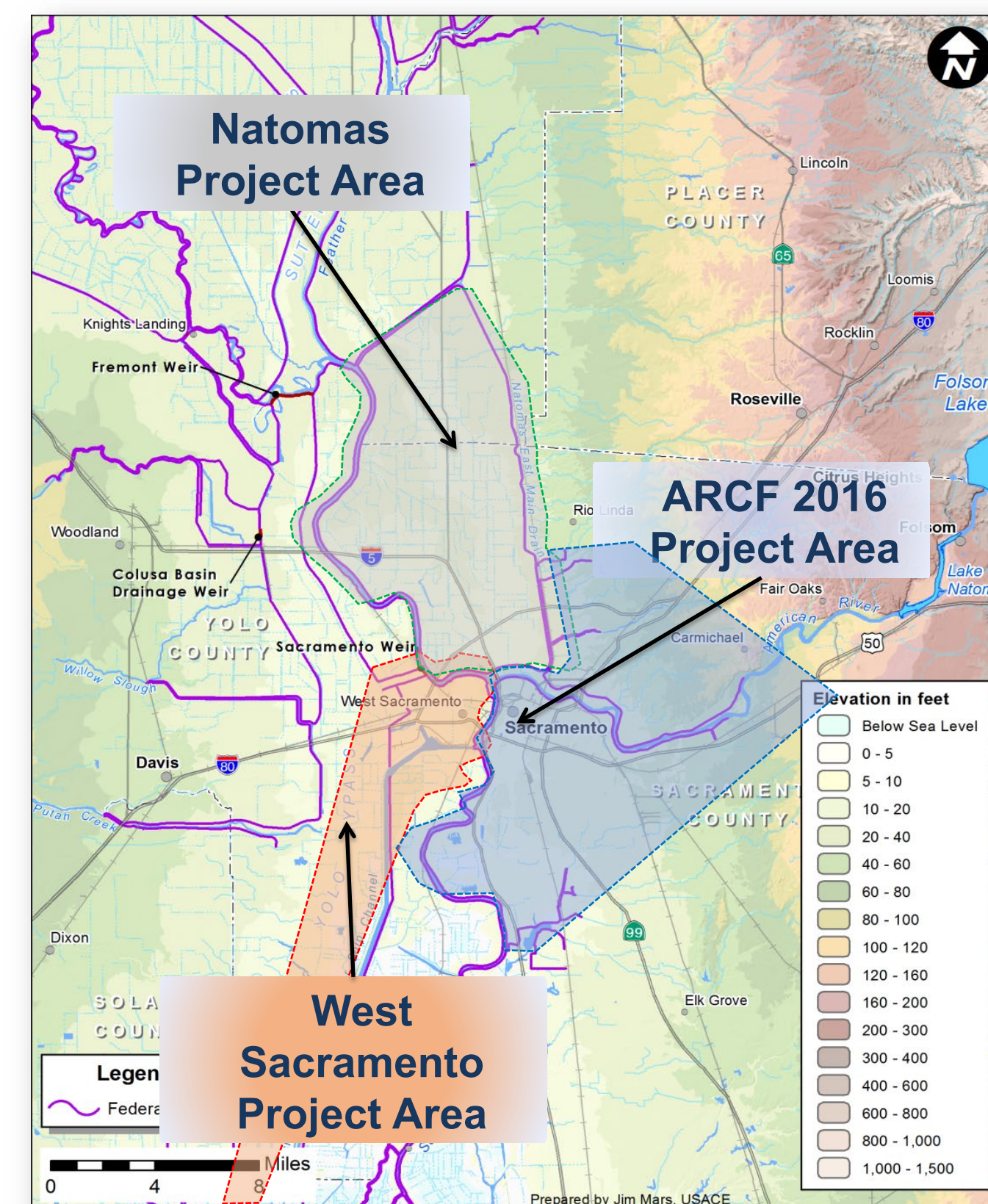


Typical Levee Improvement Cross Section



PROJECT FEATURES

Total Levee	42 Miles
Natomas Basin Project (Federal)	24 miles
Nine (9) Reaches	A through I
Cutoff Walls	34 miles
Bank Protection	N/A
Levee Raises	N/A
Setback Levee	N/A
Seepage Berm	8.3 miles
Levee Stabilization	8 miles
Utility Relocations	Various
Environmental Mitigation	Oak Woodland Habitat Giant Garter Snake Habitat Grassland Foraging Habitat



Visit our **CONGRESSIONAL PORTAL**
for detailed project information



1325 J St
Sacramento, CA 95814



(916) 557-5100



spk-pao@usace.army.mil



spk.usace.army.mil

AS OF 15APR2025