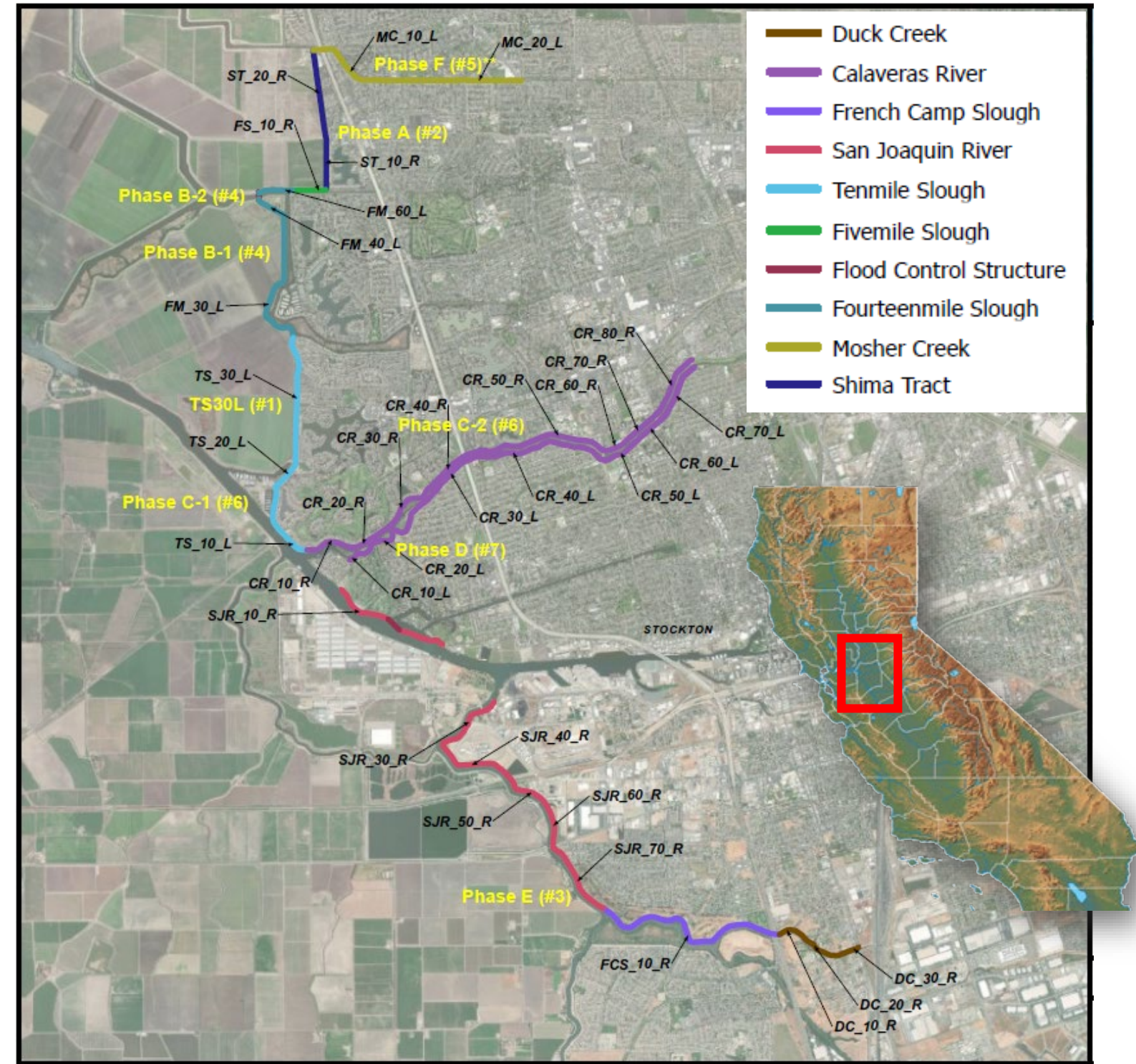


- **Project Name:** San Joaquin River Basin, Lower San Joaquin River, California
- **Congressional District:** Josh Harder (CA-09)
- **Business Line:** Flood Risk Management
- **Authorization:** America’s Water Infrastructure Act of 2018 (P.L. 115-270)
- **Phase:** Pre-Construction, Engineering, and Design / Construction
- **Problem Statement:** The project area (City of Stockton and surrounding areas) has a history of flood events that have resulted in evacuations and the inundation. Flooding risks stem from multiple sources, including comingled flows from the San Joaquin and Sacramento Rivers combined with Delta high tides and flow from Sierra Nevada streams. There is significant risk to public health, safety, and property in the project area. The existing project area levee system provides flood risk management benefits to more than 71,000 acres of mixed-use land with a current population estimated at 264,000 residents and an estimated \$21 billion in property.
- **Project Description:** The congressionally authorized project includes North and Central Stockton – Delta Front, Lower Calaveras River, and San Joaquin River Levee Improvements. The structural features of the project include approximately 24 miles of levee improvements and two closure structures (Fourteen-mile Slough and Smith Canal). The non-structural measures include Comprehensive Flood Warning, Emergency Evacuation Planning, and Floodplain Management.
- **Economics:** BCR 2.96 @ 7%
- **Cost:** Total estimated project cost (2022) = \$2,025,090,000
- **Cost Share:** 65% Federal / 35% Non-Federal
- **Schedule:**
  - Construction of First Planned Reach TS30L: 2025
  - Designs for Next Several Project Reaches: 2024-2030 (phased approach)
  - Project Physical Completion: 2039
  - Project Fiscal Completion: 2041



Visit our **PROJECT WEBPAGE** for more information

1325 J St  
Sacramento, CA 95814

(916) 557-5100

spk-pao@usace.army.mil

spk.usace.army.mil



**Current Issues:**

- TS30L delay in construction from 2022 to 2025 due to unavailability of mitigation credits, challenges in acquiring real estate, and flood season constraints.

**Risks / Mitigation Strategy:**

- Environmental Mitigation credit scarcity
  - Working in close coordination with the Non-Federal Sponsors and regulatory agencies to identify and acquire acceptable mitigation sites.
- Real Estate acquisition challenges
  - Working in close coordination with Non-Federal Sponsors and stakeholders to proactively identify and resolve conflicts.

**Other Project Information:**

- PPA – Executed 30SEP20
- Non-Federal Sponsors:
  - San Joaquin Area Flood Control Agency
  - Central Valley Flood Protection Board (supported by the CA Department of Water Resources)

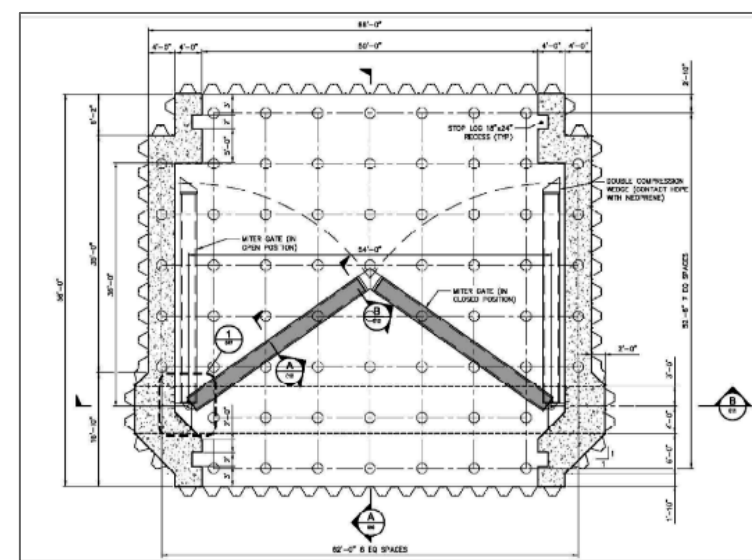
**Schedule: 2024/2025**

- Phase A
  - 35% Design Complete: MAR24
  - 65% Design Complete: NOV24
  - 95% Design Complete: APR25
- Phase C (Calaveras RB & TS10-20L) GDR: MAY24
- TS30L
  - USACE Const RE Receipt Cert: OCT23
  - Final Plans & Specs Complete: APR24
  - Ready to Advertise: JUN24
  - Construction Contract Award: SEP24
  - Construction Start: APR25

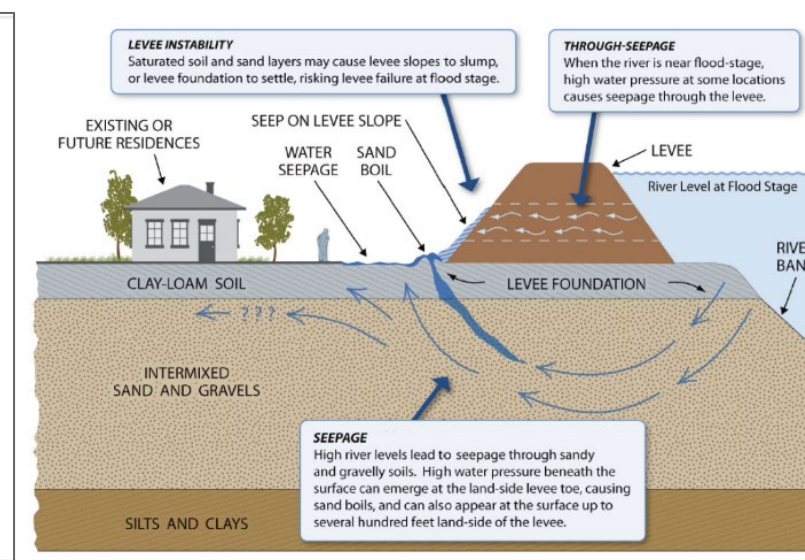
Project Plan	
Cutoff Walls	23.7 miles
Seismic Fixes	1.1 miles
Levee Raises (between 1.4' - 4.0')	3.4 miles
New Setback Levee	1.3 miles
Geometry Improvements (levee reshaping)	4.5 miles
Erosion Protection	5.0 miles
New Levee	0.8 miles
Closure Structures (2 locations)	0.6 miles
TOTAL Miles of Improvements (*some features combine and overlap)	40.4* miles



Stockton Floods 1955



Example drawing of closure structure (Source: SJAFCA, Smith Canal Final EIR)



Typical levee seepage and stability problems



Visit our **PROJECT WEBPAGE** for more information

1325 J St  
Sacramento, CA 95814

(916) 557-5100

spk-pao@usace.army.mil

spk.usace.army.mil