



US Army Corps
of Engineers

SACRAMENTO DISTRICT

PROJECT PLACEMAT

American River Common Features – 2016



Flooding in
Sacramento



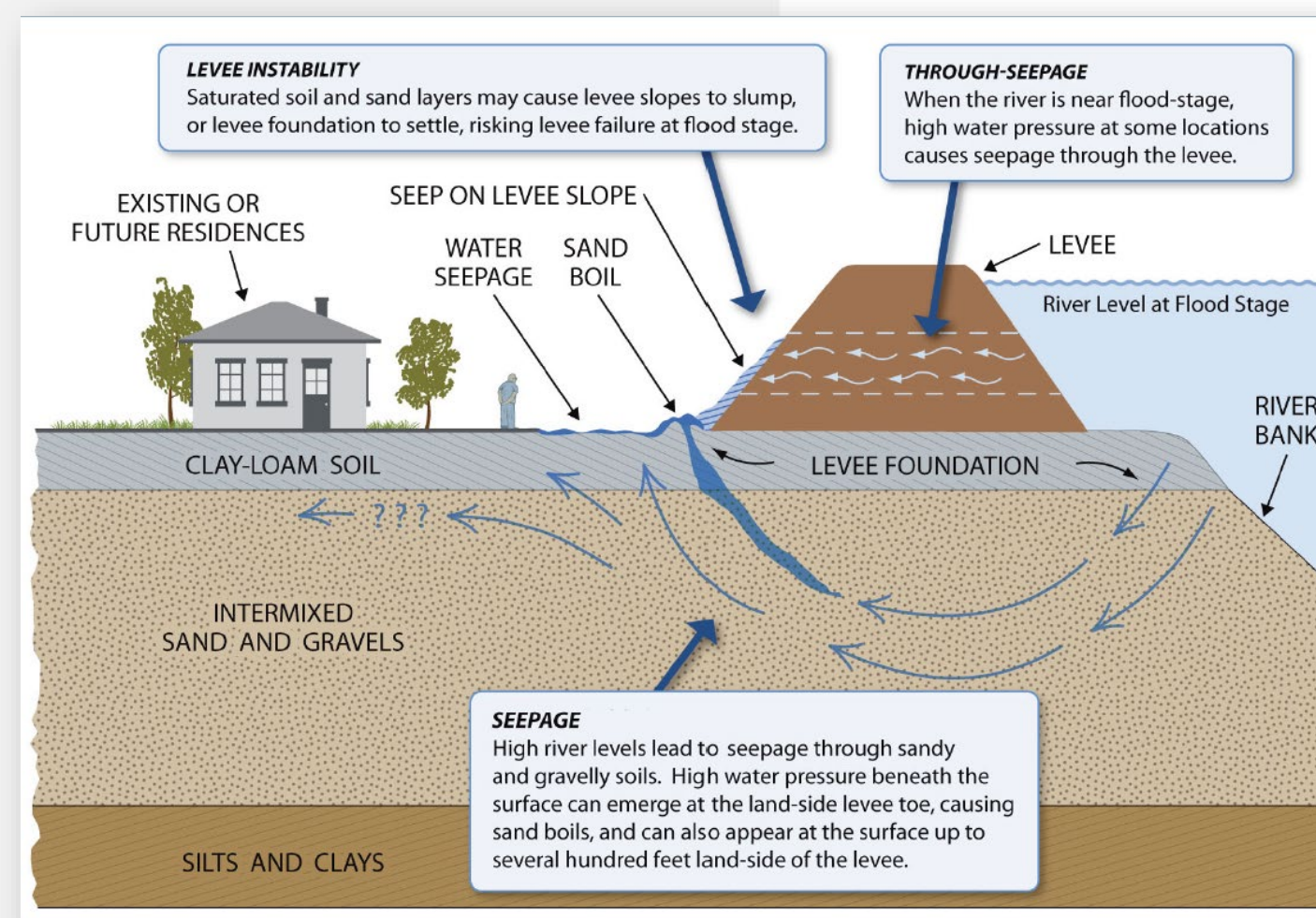
Flood Risk Management for the City of Sacramento



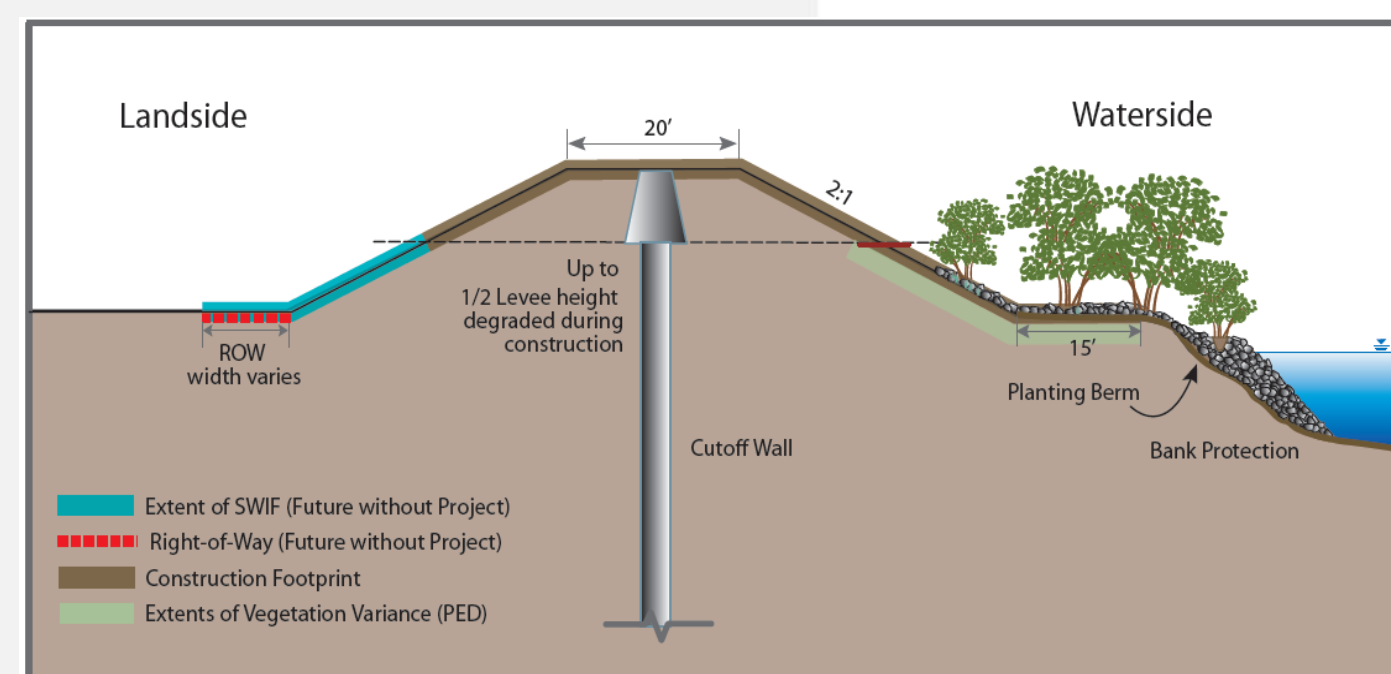
SARCA
Sacramento Area Flood Control Agency

Current Status:

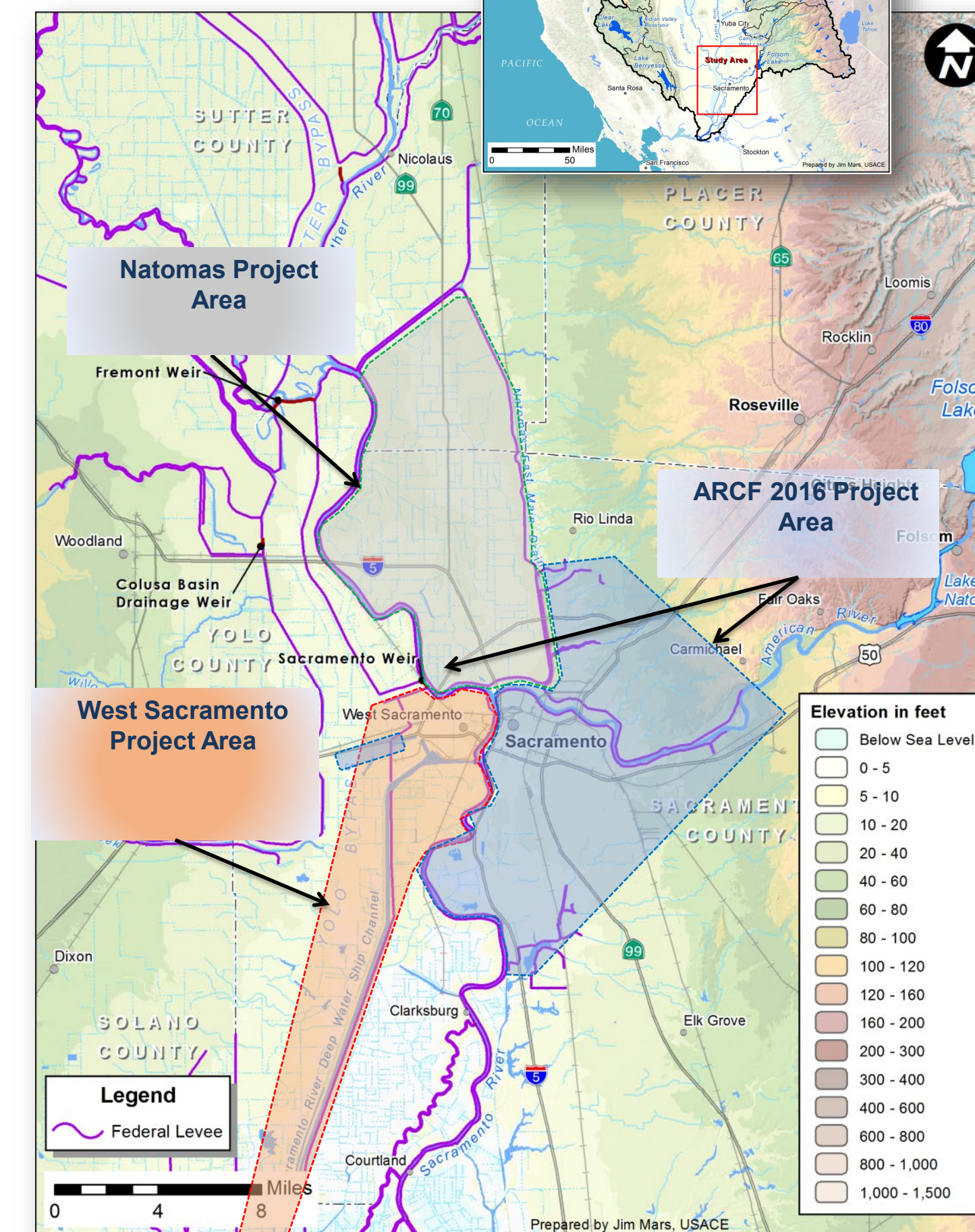
- **Seepage/Stability/Overtopping Contracts**
 - Reach D, C1 Construction Completed 7JAN20
 - Magpie Design Ready to Advertise 20FEB26
- **Sacramento River East Levee Contracts (SREL CX)**
 - SREL C1 Construction Completed 8FEB21
 - SREL C2 Construction Completed 31AUG22
 - SREL C3 Construction Completed 31OCT23
 - SREL C4 Construction Completed 26SEP24
 - SREL C5 Design Ready to Advertise 16SEP26
- **Erosion American River Contracts (AR CX)**
 - AR C1 Construction Completed 31MAR23
 - AR C2 Construction Completed 24JAN24
 - AR C3A Construction Start 29JUL24
 - AR C3B N/S Design Ready to Advertise 12JUN26
 - AR C4A Design Ready to Advertise 21JAN27
 - AR C4B Design Ready to Advertise
- **Erosion Sacramento River Contracts (SRE CX)**
 - SRE C1 Construction Completed 23SEP22
 - SRE C2 Construction Completed 13DEC24
 - SRE C3 Design Ready to Advertise 28OCT25
 - SRE C4 Construction Substantially Complete 13DEC24
 - SRE C5 Construction Contract Award 29MAY25
- **Weir Widening Construction Completion 28MAY27**
- **Mitigation ARMS Design Ready to Advertise 04DEC25**
- **Mitigation SRMS Design Ready to Advertise 06MAR26**



Typical Levee Seepage and Stability Problems



Typical Levee Improvement Cross Section



Visit our **CONGRESSIONAL PORTAL**
for detailed project information



1325 J St
Sacramento, CA 95814



(916) 557-5100



spk-pao@usace.army.mil



spk.usace.army.mil

AS OF 27MAR2025



US Army Corps
of Engineers

SACRAMENTO DISTRICT

PROJECT PLACEMAT

American River Common Features – 2016 | THE AUTHORIZED PROJECT



Yellow
billed
Cuckoo

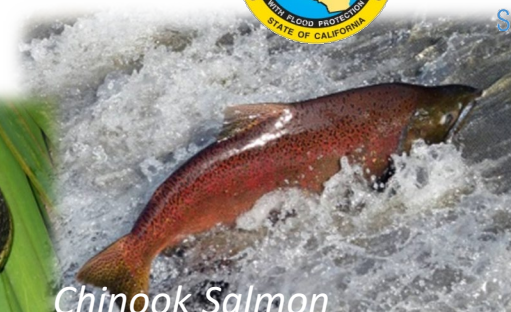
Delta Smelt



Valley Elderberry
Longhorn Beetle



Giant Garter Snake



Chinook Salmon

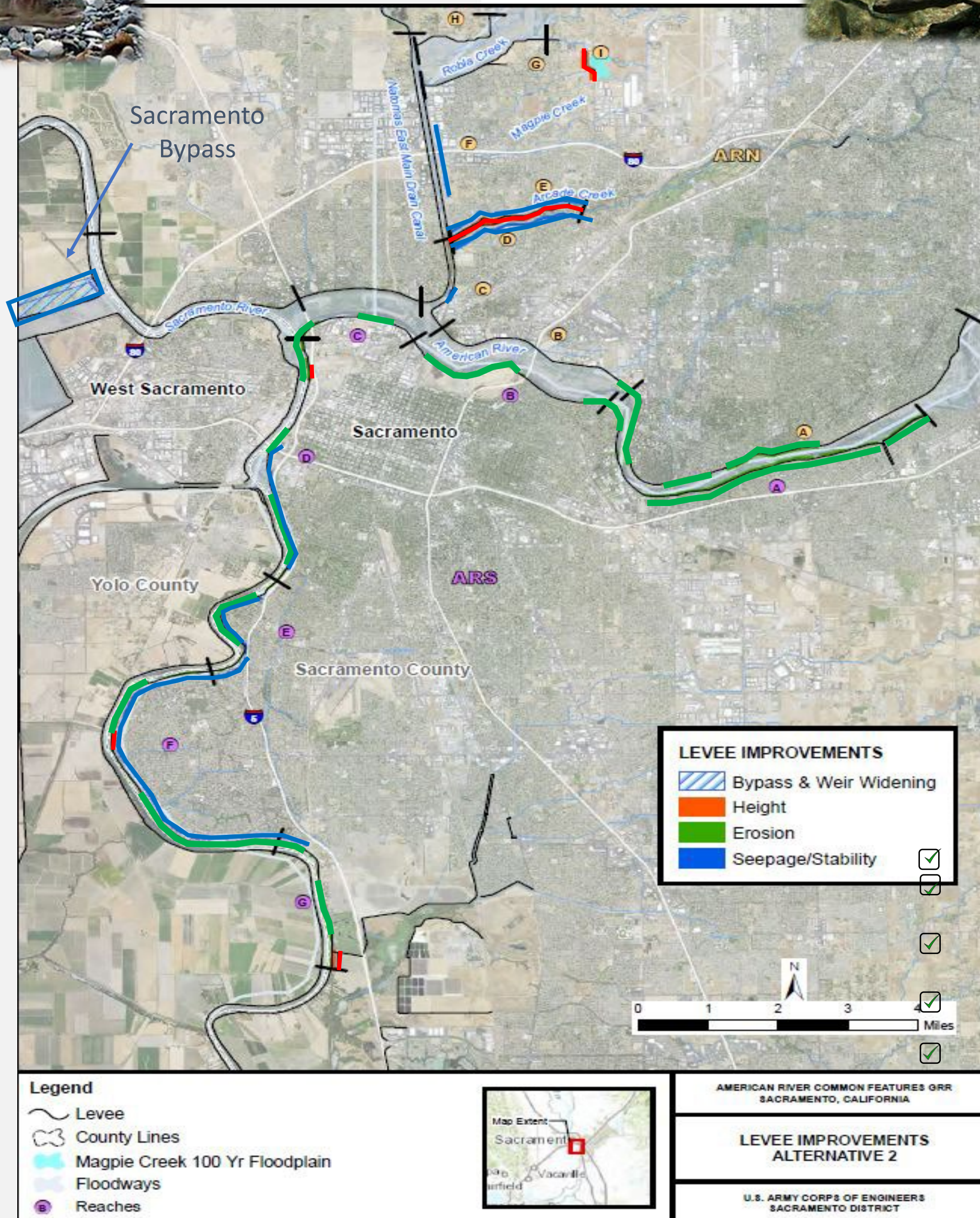


Vernal Pool

Authorized Plan

Features	American River Common Features
Cutoff walls	13 miles
Bank protection	21 miles
Levee stabilization	5 miles
Levee raises	5 miles
Widen Sacramento Weir and Bypass	1500 feet
Setback levee	N/A
Levee improvements to Deep Water Ship Channel	N/A
Reduces Risk	500,000 people
	125,000 structures
	\$62 billion

- ☒ 408 Approved 2015
- ☒ Water Infrastructure Improvements for the Nation Act Dec 2016
- ☒ First Federal Appropriation: Jun 2017
- ☒ Design Agreement: Aug 2017
- ☒ Project Management Plan: Apr 2018
- ☒ P.L.115-123, Bipartisan Budget Act
- ☒ 408 Eastern Tributaries Construction Complete: Dec 2018
- ☒ Project Partnership Agreement: JAN 2019
- ☒ Reach D, Contract 1 Construction Complete: Feb 2020
- ☐ Construction Completion Target: 2025



Economic Summary

Oct 15 Price Levels, 3.125% Discount Rate (\$1000s)

Recommended Plan	ARCF (LPP)
Investment Costs:	
Flood Control First Costs	\$1,565,750 (2015 price level)
Interest During Construction	\$286,243
Total	\$1,851,993
Average Annual Cost	
Interest and Amortization	\$74,283
OMRR&R	\$494
Total	\$74,777
Average Annual Benefits	\$344,695
Net Annual Flood Risk Management Benefits	\$269,918
Benefit to Cost Ratio	3.0-to-1 @ 7% discount rate

Section 7 Consultation (ESA)

USFWS – Final BO ☒

NMFS – Final BO ☒

USFWS Coordination Act

Final CAR ☒

Section 106 Compliance

Programmatic Agreement ☒

EIS/EIR

ROD signed – August 2016 ☒



Visit our **CONGRESSIONAL PORTAL**
for detailed project information



1325 J St
Sacramento, CA 95814



(916) 557-5100



spk-pao@usace.army.mil



spk.usace.army.mil

AS OF 27MAR2025