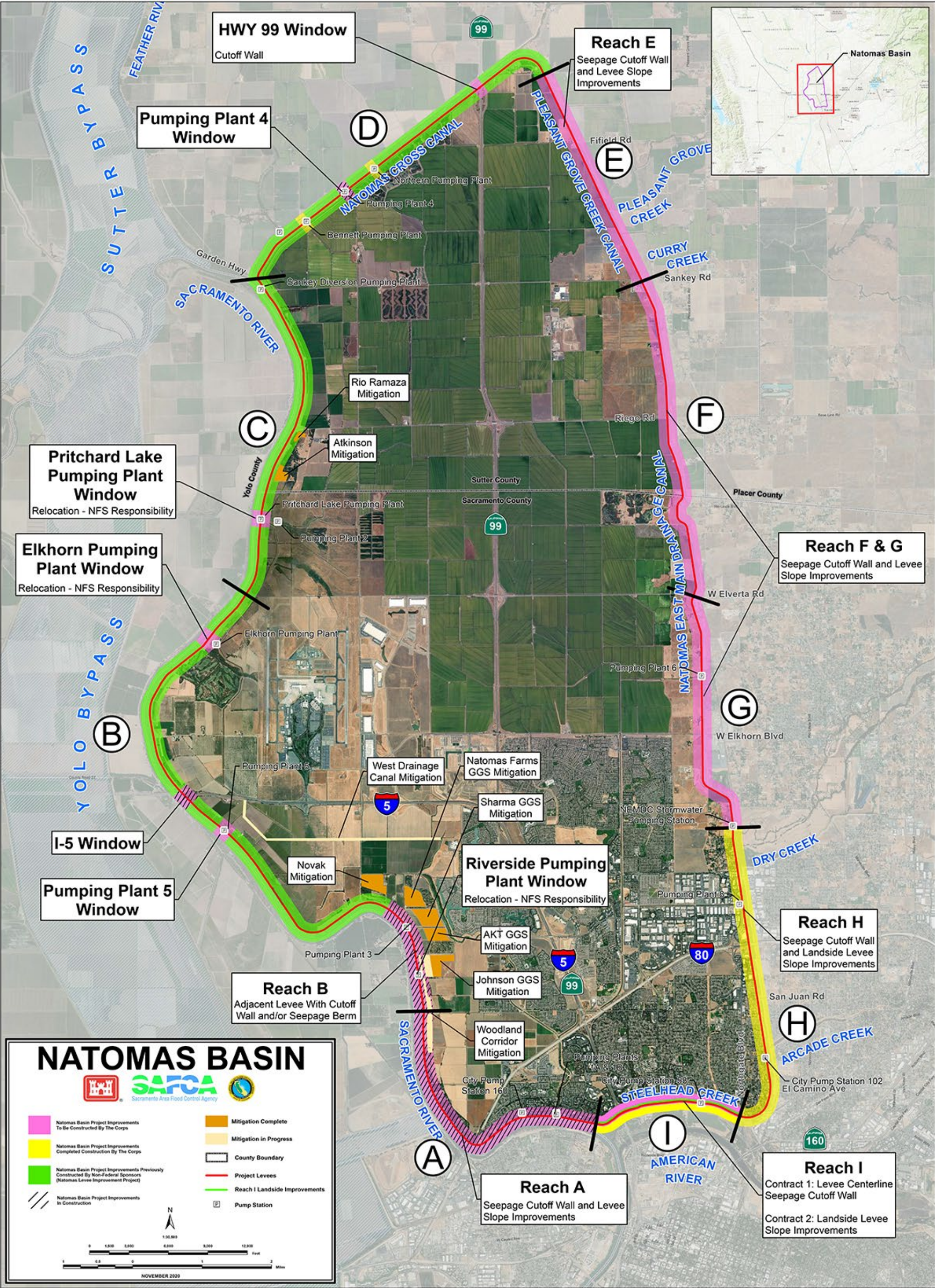


The Natomas Basin includes portions of the counties of Sacramento and Sutter as well as a portion of the City of Sacramento. The basin is protected by 42 miles of ring levee divided into nine reaches. The non-Federal Sponsors completed construction on 18 miles under the Natomas Levee Improvement Program (NLIP) in advance of the Authorized Project. Levees are along the Sacramento and American Rivers, the Natomas Cross Canal (NCC), the Pleasant Grove Creek Canal (PGCC), and the Natomas East Main Drainage Canal (NEMDC).

ECONOMIC SUMMARY	
Oct 22 Price Levels, 2.25% Discount Rate (\$1000s)	
Investment Costs	
Flood Risk Management First Costs	\$1.4 Billion (2022 price level)
Interest During Construction	\$5,096
Total	\$1,695,600
Average Annual Cost	
Interest and Amortization	\$637.00
OMRR&R	\$5800.00
Total	\$6437
Average Annual Benefits	\$661,700
Net Annual Flood Risk Management Benefits	\$540,200
Benefit to Cost Ratio	5.4-to-1 @ 7% discount rate

PROJECT STATUS & ENGAGEMENTS	
PED	Reach B Pumping Plant #5 – 65% Design Phase (Construction expected FY26) Reach D Hwy 99 – Final Design Phase (Construction expected FY24) Reach F&G – 95% Design Phase (Construction expected FY25-27) Reach I Contract 2 – Final Design Phase (Construction expected FY24)
CONSTRUCTION	Reach A – Expected completion FY27 Reach B – Expected completion FY23 Reach D Pumping Plant #4 – Expected completion FY23 Reach H – Expected completion FY24
CLOSEOUT	Reach I Contract 1 – Expected completion FY23
COMPLETED	Reach B, I-5 Window (2023)
ENGAGEMENTS	Reach A Status Update Virtual Public Meeting Date: 19APR23 Time: 6:00PM-7:30PM



Visit our **CONGRESSIONAL PORTAL**
for detailed project information



1325 J St
Sacramento, CA 95814



(916) 557-5100



spk-pao@usace.army.mil



spk.usace.army.mil

AS OF 19APR2023

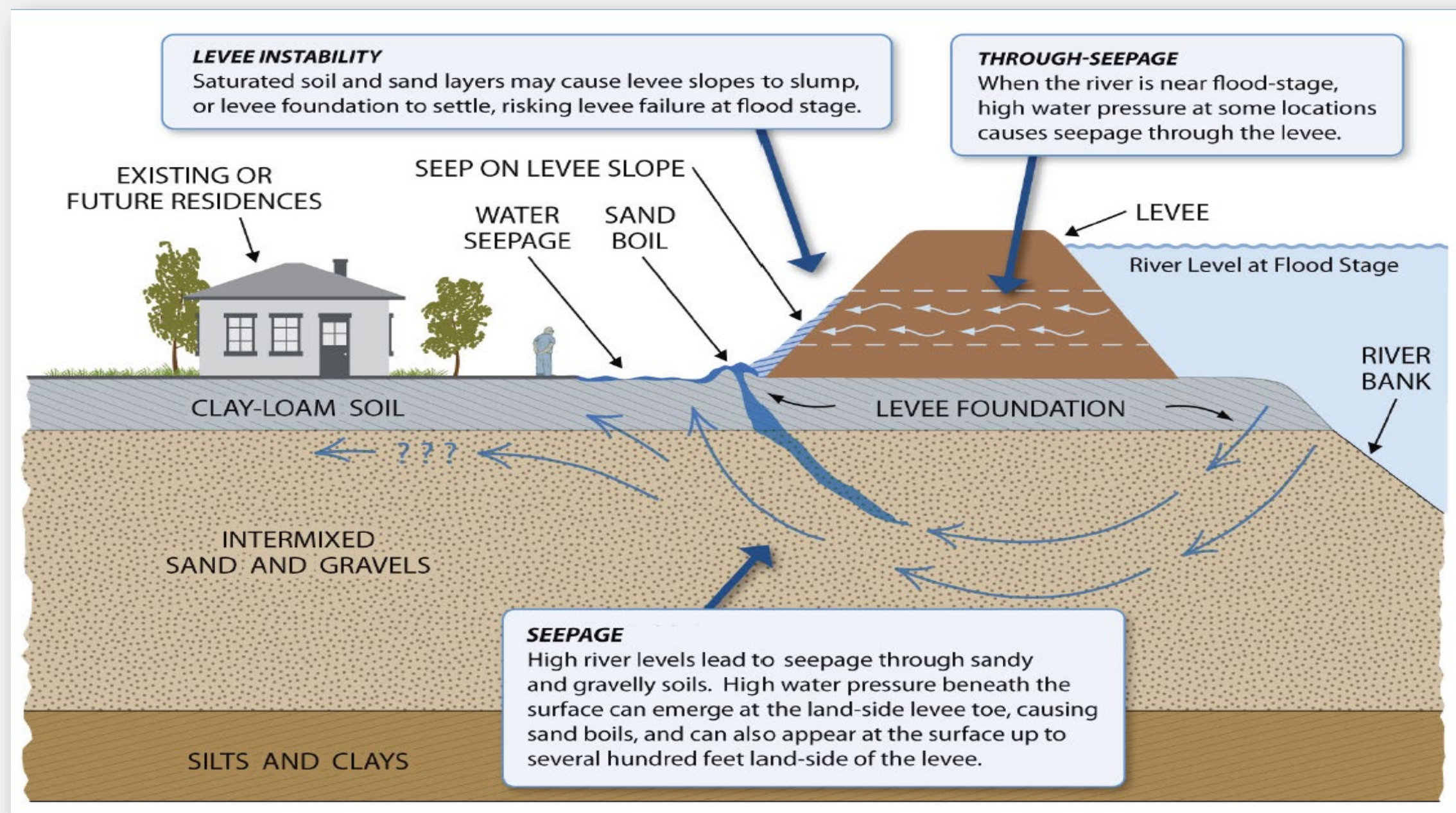


US Army Corps
of Engineers

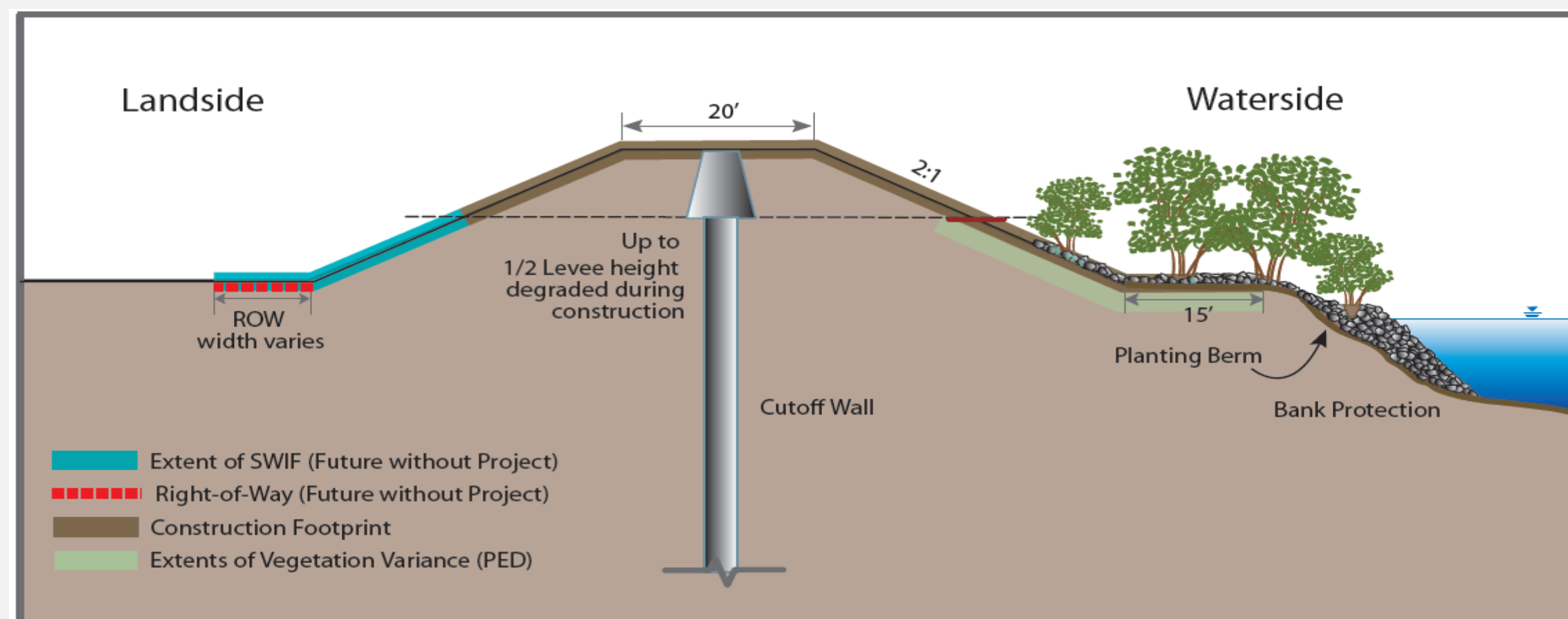
SACRAMENTO DISTRICT

PROJECT PLACEMAT

Typical Levee Seepage and Stability Problems

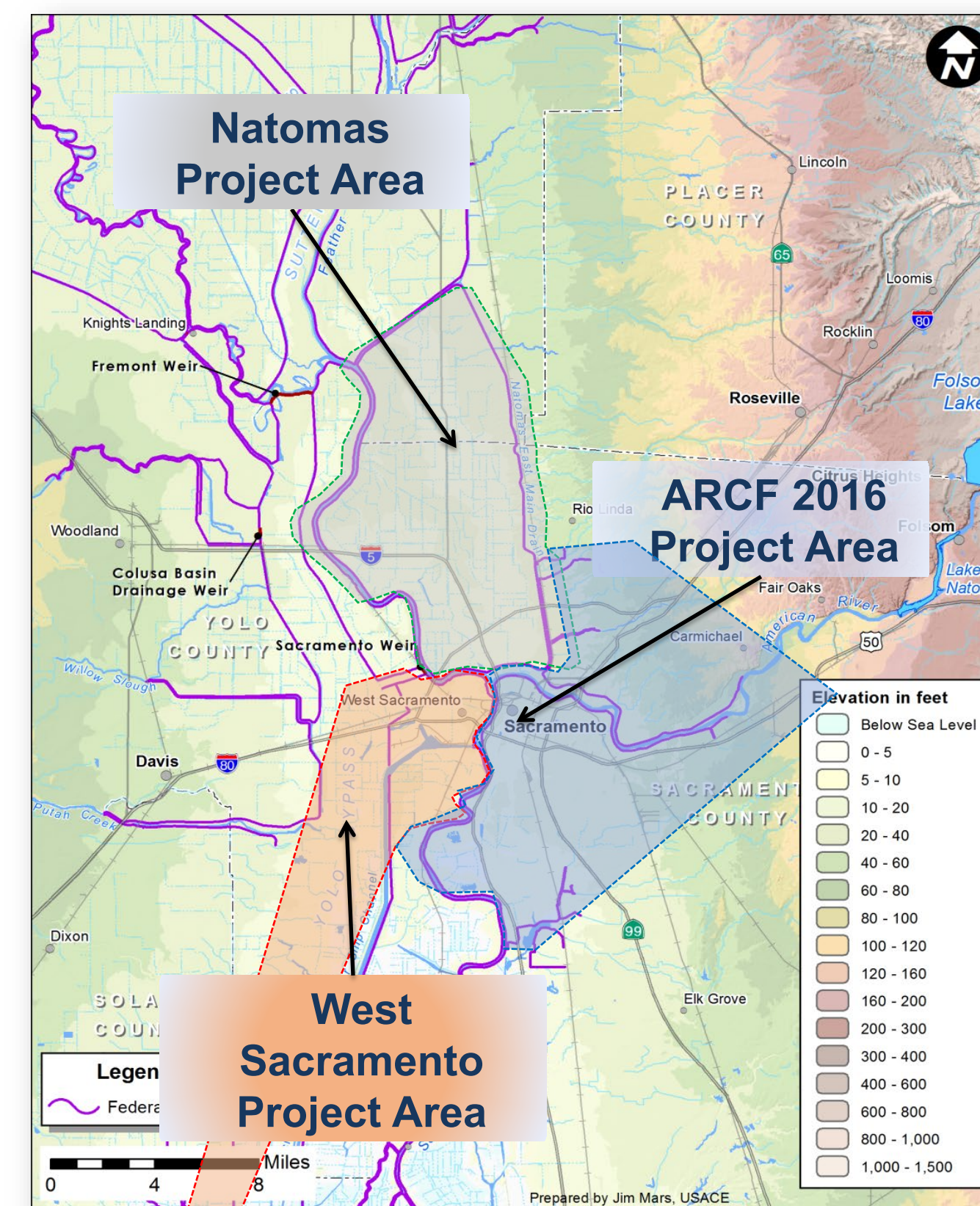


Typical Levee Improvement Cross Section



PROJECT FEATURES

Cutoff Walls	34 miles
Bank Protection	N/A
Levee Stabilization	8 miles
Levee Raises	N/A
Setback Levee	N/A
Utility Relocations	Various
Environmental Mitigation	Oak Woodland Habitat Giant Garter Snake Habitat Grassland Foraging Habitat



Visit our **CONGRESSIONAL PORTAL**
for detailed project information



1325 J St
Sacramento, CA 95814



(916) 557-5100



spk-pao@usace.army.mil



spk.usace.army.mil

AS OF 19APR2023