

# American River Common Features Natomas Basin

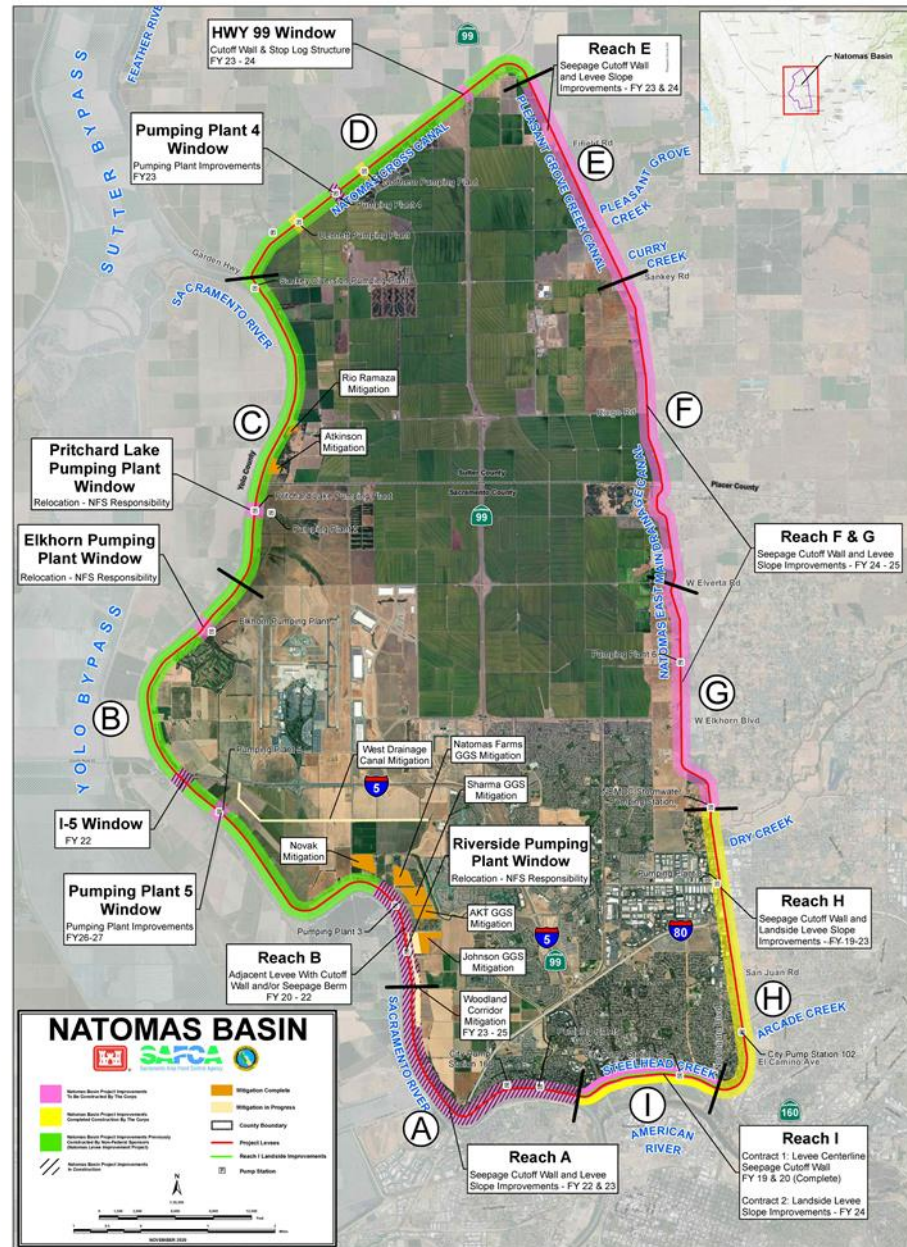
## Levee Improvement Project Monthly Update

October 2023



US Army Corps of Engineers®

REACH	SCHEDULE
<b>Reach A</b> Gateway Oaks Dr to Farm Rd	<ul style="list-style-type: none"> <li>FY23 Construction season underway along Garden HWY starting at Farm Rd. and extending to I-80.</li> <li>Additional tree removal resuming Fall 2023.</li> <li>Overhead Utility relocations ongoing, estimated completion Fall 2024.</li> <li>Improvements to Pumping Plant 1B, City Sump 160 and Pumping Plant 1A anticipated to begin in 2024.</li> </ul> <p>Visit <b>Reach A</b> website for the latest project news: <a href="#">Click here</a></p>
<b>Reach B</b> San Juan Rd to Elverta Rd	<ul style="list-style-type: none"> <li>Levee construction began July 2020; Adjacent Levee Construction is complete. Final completion of major work items is expected in the Fall 2023.</li> <li>Irrigation canal improvements are complete.</li> <li>Lift station is operational and new ARVs are installed. Additional programming and testing will be completed in Fall 2023.</li> <li>I-5 Window - Construction began Summer 2022 and was declared substantially complete in January 2023.</li> <li>Pumping Plants:                         <ul style="list-style-type: none"> <li>Pumping Plant #3 – Construction completed, and plant is operational.</li> <li>Pumping Plant #5 - Construction expected to begin Spring 2026.</li> <li>Riverside Pumping Plant Replacement ongoing with discharge pipe relocation to begin 2024.</li> <li>Elkhorn Pumping Plant construction to begin 2024.</li> </ul> </li> </ul>
<b>Reach C</b> Elverta Rd to Sankey Rd	<ul style="list-style-type: none"> <li>Levee construction was completed in 2008/2009 by Sacramento Area Flood Control Agency.</li> <li>Pritchard Lake Pumping Plant to begin construction in 2025.</li> </ul>
<b>Reach D</b> Sankey Rd to Howsley Rd	<ul style="list-style-type: none"> <li>Levee construction was completed in 2008/2009 by Sacramento Area Flood Control Agency.</li> <li>Highway 99 Window – Construction expected to begin Spring 2024.</li> <li>Pumping Plant #4 – Construction began August 2021; expected to be completed Spring 2024.</li> </ul>
<b>Reach E</b> Howsley Rd to Sankey Rd	<ul style="list-style-type: none"> <li>Construction activities began June 2023.</li> <li>Cutoff wall installation scheduled for Summer 2024.</li> <li>Natomas Levee Road is currently closed for construction activities from Sankey Road and extending north to Howsley Road.</li> </ul>
<b>Reach F&amp;G</b> Sankey Rd to Drainage Pumping Station	<ul style="list-style-type: none"> <li>Levee construction and improvements to the levee slope and Pumping Plant #6 expected to begin Spring 2025.</li> </ul>
<b>Reach H</b> Drainage Pumping Station to Northgate Blvd	<ul style="list-style-type: none"> <li>Levee construction and improvements to Pumping Stations #8 and #102 began 2018; completed Spring 2023.</li> <li>Seepage berm construction to begin later Summer 2022; completion expected in the Fall 2023.</li> <li>Patrol Road, Retaining Wall, &amp; Fencing construction is underway.</li> </ul>
<b>Reach I</b> Northgate Blvd to Gateway Oaks	<ul style="list-style-type: none"> <li>Contract 1: Levee construction and improvements to Pump Station #58 completed Fall 2022.</li> <li>Contract 2: Landside levee improvements and installation of maintenance road expected to begin Summer 2024.                         <ul style="list-style-type: none"> <li>Tree Removal efforts ongoing.</li> <li>Utility Relocations ongoing. Expected completion Spring 2024.</li> </ul> </li> </ul>



### Get the Latest Natomas Updates Here



Project Website

[www.natomaslevees.com](http://www.natomaslevees.com)

#### CONTACT INFORMATION

For questions or concerns, please contact USACE Public Affairs  
916.557.5100 / [spk-pao@usace.army.mil](mailto:spk-pao@usace.army.mil)



US Army Corps of Engineers®



# American River Common Features Natomas Basin

## Levee Improvement Project Monthly Update

October 2023



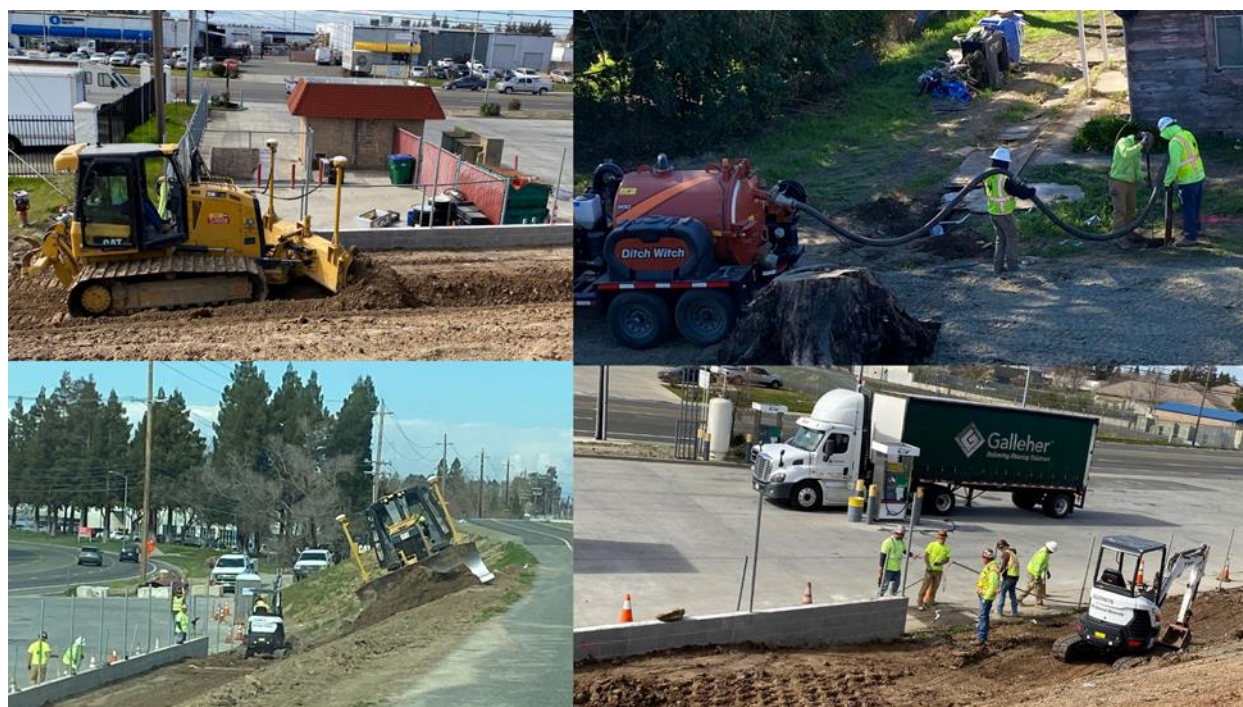
U.S. ARMY

US Army Corps  
of Engineers®



### Reach B:

Pumping Plant No. 3 Relief Well Controlled Low Strength Material  
backfill



### Reach H:

Levee improvements and Seepage Berm construction



US Army Corps  
of Engineers®

