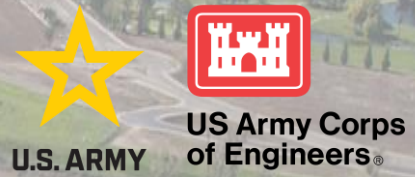


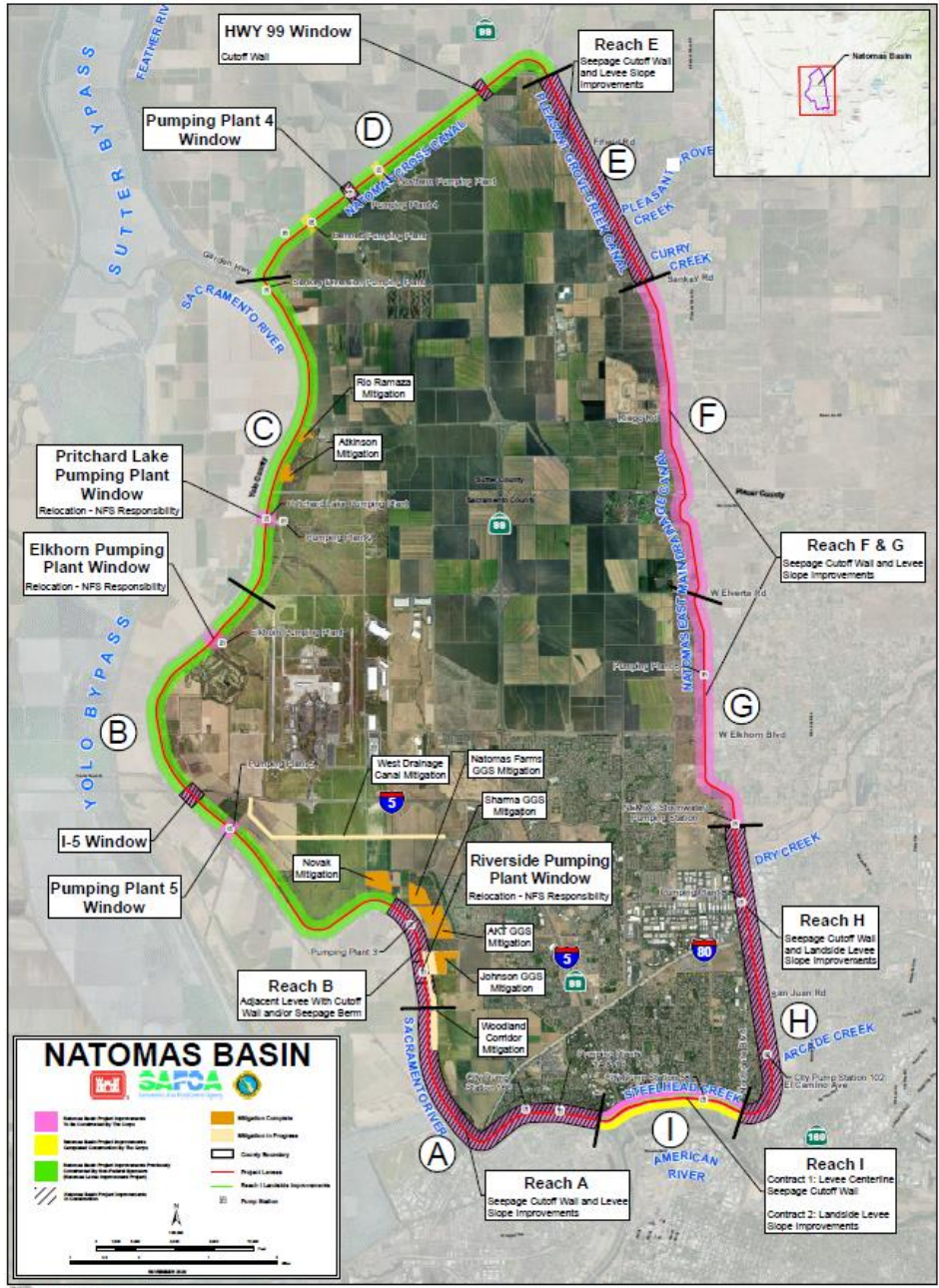
American River Common Features Natomas Basin

Levee Improvement Project Update

JANUARY 2025



REACH	SCHEDULE
Reach A Gateway Oaks Dr to Farm Rd	<ul style="list-style-type: none"> FY24 Construction season commenced on April 15 along Garden HWY starting at Farm Road and extending to I-80. Tree removal is complete for the 2024 season. Overhead utility relocations are ongoing, with completion estimated for Spring of 2025. Improvements to Pumping Plant 1A Outfall Structure are anticipated to begin in 2025. <p>Visit Reach A website for the latest project news: Click here</p>
Reach B San Juan Rd to Elverta Rd	<ul style="list-style-type: none"> Construction completed in March 2024. I-5 Window - Construction physically complete in November 2023. Pumping Plants: <ul style="list-style-type: none"> Pumping Plant #3 – Construction completed, and plant is operational. Pumping Plant #5 - Construction anticipated to begin in 2026. Riverside Pumping Plant Replacement ongoing with discharge pipe relocation projected to begin 2026. Elkhorn Pumping Plant construction projected to begin 2027.
Reach C Elverta Rd to Sankey Rd	<ul style="list-style-type: none"> Levee construction was completed in 2008/2009 by Sacramento Area Flood Control Agency. Pritchard Lake Pumping Plant construction projected to begin 2028.
Reach D Sankey Rd to Howsley Rd	<ul style="list-style-type: none"> Levee construction was completed in 2008/2009 by Sacramento Area Flood Control Agency. Highway 99 Window – Construction began Summer 2024. Anticipate road closures and traffic impacts beginning early Summer 2025. Pumping Plant #4 – Construction began August 2021; estimated completion by Fall 2025.
Reach E Howsley Rd to Sankey Rd	<ul style="list-style-type: none"> Construction activities began June 2023; estimated completion Fall 2025. Cutoff wall installation completed as of July 19, 2024.
Reach F&G Sankey Rd to Drainage Pumping Station	<ul style="list-style-type: none"> Levee construction and improvements to the levee slope and Pumping Plant #6 projected to begin in 2028.
Reach H Drainage Pumping Station to Northgate Blvd	<ul style="list-style-type: none"> Levee construction and improvements to Pumping Stations #8 and #102 began 2018; Patrol Road and Retaining Wall completed December 2023.
Reach I Northgate Blvd to Gateway Oaks	<ul style="list-style-type: none"> Contract 1: Levee construction and improvements to Pump Station #58 completed Fall 2022. Contract 2: Landside levee improvements and installation of maintenance road projected to begin in 2026. Utility Relocations ongoing. Expected completion in 2025.



Get the Latest Natomas Updates Here

www.natomaslevees.com



CONTACT INFORMATION

For questions or concerns, please contact USACE Public Affairs
916.557.5100 / spk-pao@usace.army.mil

