

# American River Common Features Natomas Basin

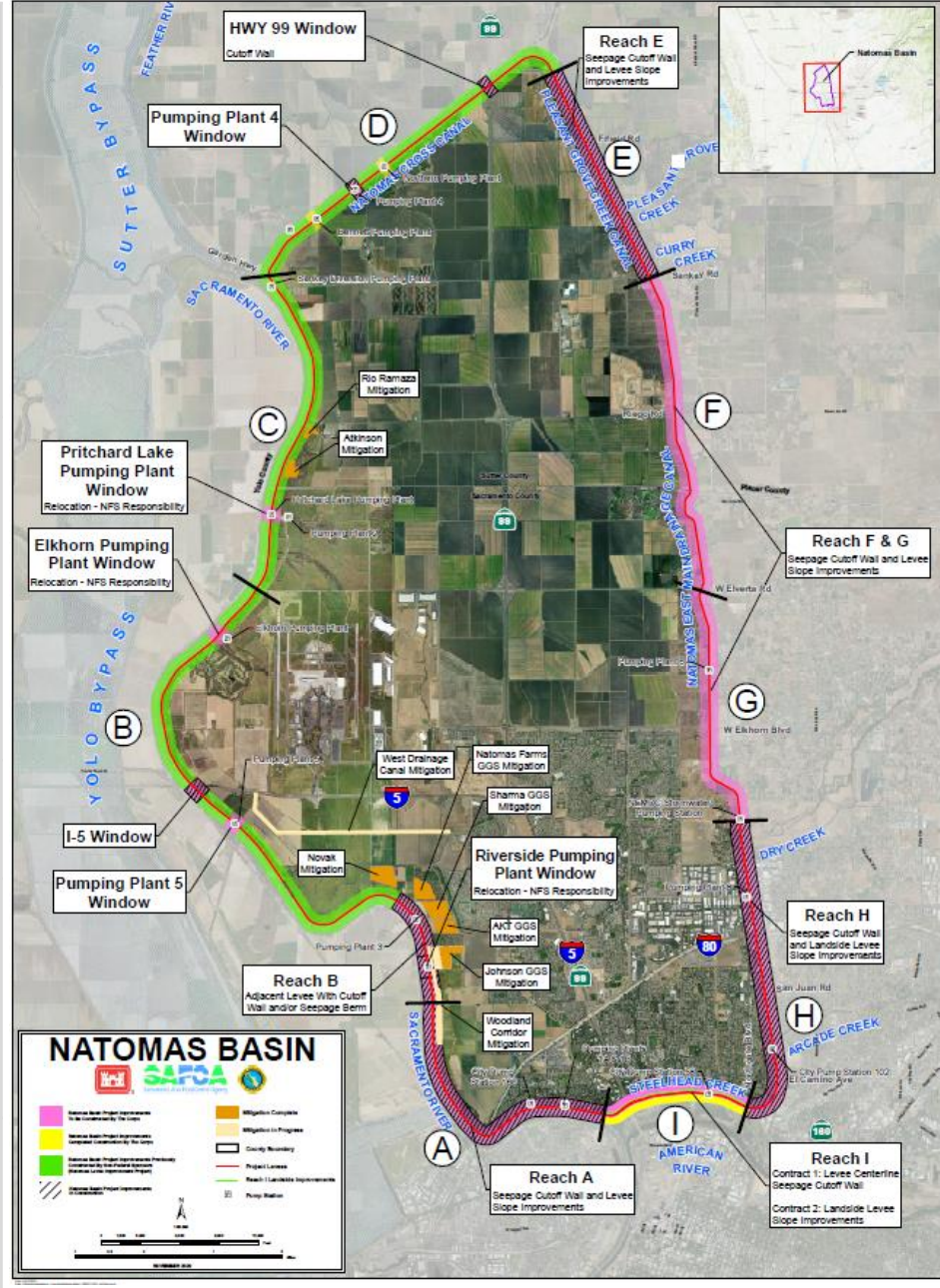
## Levee Improvement Project Update

JULY 2024



US Army Corps of Engineers®

REACH	SCHEDULE
<b>Reach A</b> Gateway Oaks Dr to Farm Rd	<ul style="list-style-type: none"> <li>FY24 Construction season commenced on 15APR along Garden HWY starting at Farm Rd. and extending to I-80.</li> <li>Tree removal is complete for the 2024 season.</li> <li>Overhead Utility relocations ongoing, estimated completion Spring 2025.</li> <li>Improvements to Pumping Plant 1A Outfall Structure anticipated to begin in 2024.</li> </ul> <p>Visit <b>Reach A</b> website for the latest project news: <a href="#">Click here</a></p>
<b>Reach B</b> San Juan Rd to Elverta Rd	<ul style="list-style-type: none"> <li>Construction completed in March 2024.</li> <li>I-5 Window - Construction physically complete in November 2023.</li> <li>Pumping Plants:                         <ul style="list-style-type: none"> <li>Pumping Plant #3 – Construction completed, and plant is operational.</li> <li>Pumping Plant #5 - Construction anticipated to begin in 2026.</li> <li>Riverside Pumping Plant Replacement ongoing with discharge pipe relocation projected to begin 2026.</li> <li>Elkhorn Pumping Plant construction projected to begin 2027.</li> </ul> </li> </ul>
<b>Reach C</b> Elverta Rd to Sankey Rd	<ul style="list-style-type: none"> <li>Levee construction was completed in 2008/2009 by Sacramento Area Flood Control Agency.</li> <li>Pritchard Lake Pumping Plant construction projected to begin 2027.</li> </ul>
<b>Reach D</b> Sankey Rd to Howsley Rd	<ul style="list-style-type: none"> <li>Levee construction was completed in 2008/2009 by Sacramento Area Flood Control Agency.</li> <li>Highway 99 Window – Construction to begin Summer 2024. Anticipate road closures and traffic impacts beginning early Summer 2025.</li> <li>Pumping Plant #4 – Construction began August 2021; estimated completion by Fall 2024.</li> </ul>
<b>Reach E</b> Howsley Rd to Sankey Rd	<ul style="list-style-type: none"> <li>Construction activities began June 2023; estimated completion Fall 2024.</li> <li>Cutoff wall installation completed as of 19JUL24.</li> <li><b>**ROAD CLOSURE**</b> Natomas Levee Rd is currently closed for construction activities from Sankey Rd extending north to Howsley Rd.</li> </ul>
<b>Reach F&amp;G</b> Sankey Rd to Drainage Pumping Station	<ul style="list-style-type: none"> <li>Levee construction and improvements to the levee slope and Pumping Plant #6 projected to begin in 2028.</li> </ul>
<b>Reach H</b> Drainage Pumping Station to Northgate Blvd	<ul style="list-style-type: none"> <li>Levee construction and improvements to Pumping Stations #8 and #102 began 2018; Patrol Road and Retaining Wall completed December 2023.</li> </ul>
<b>Reach I</b> Northgate Blvd to Gateway Oaks	<ul style="list-style-type: none"> <li>Contract 1: Levee construction and improvements to Pump Station #58 completed Fall 2022.</li> <li>Contract 2: Landside levee improvements and installation of maintenance road projected to begin in 2026.                         <ul style="list-style-type: none"> <li>Tree Removal efforts ongoing.</li> <li>Utility Relocations ongoing. Expected completion in 2025.</li> </ul> </li> </ul>



### Get the Latest Natomas Updates Here



[www.natomaslevees.com](http://www.natomaslevees.com)

#### CONTACT INFORMATION

For questions or concerns, please contact USACE Public Affairs  
916.557.5100 / [spk-pao@usace.army.mil](mailto:spk-pao@usace.army.mil)

