

Presented by United States Army Corp of Engineers

CESPK-PDR

# WEST DRAINAGE CANAL PUBLIC OUTREACH PRESENTATION

# AGENDA



Introduction of the Project



Why is This Project Needed?



Project Features



Environmental Documentation



Construction Schedule



Q&A



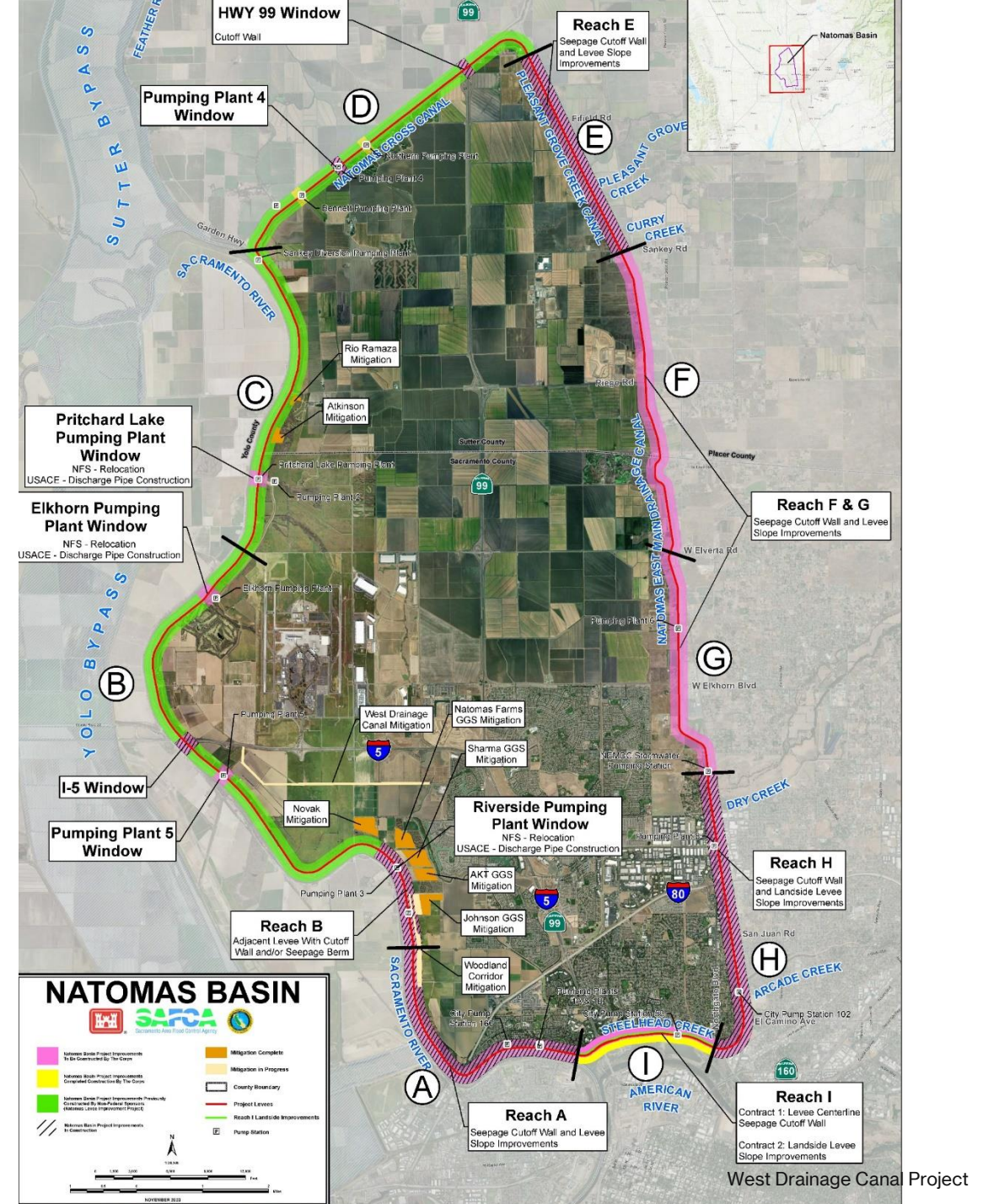
# INTRODUCTION

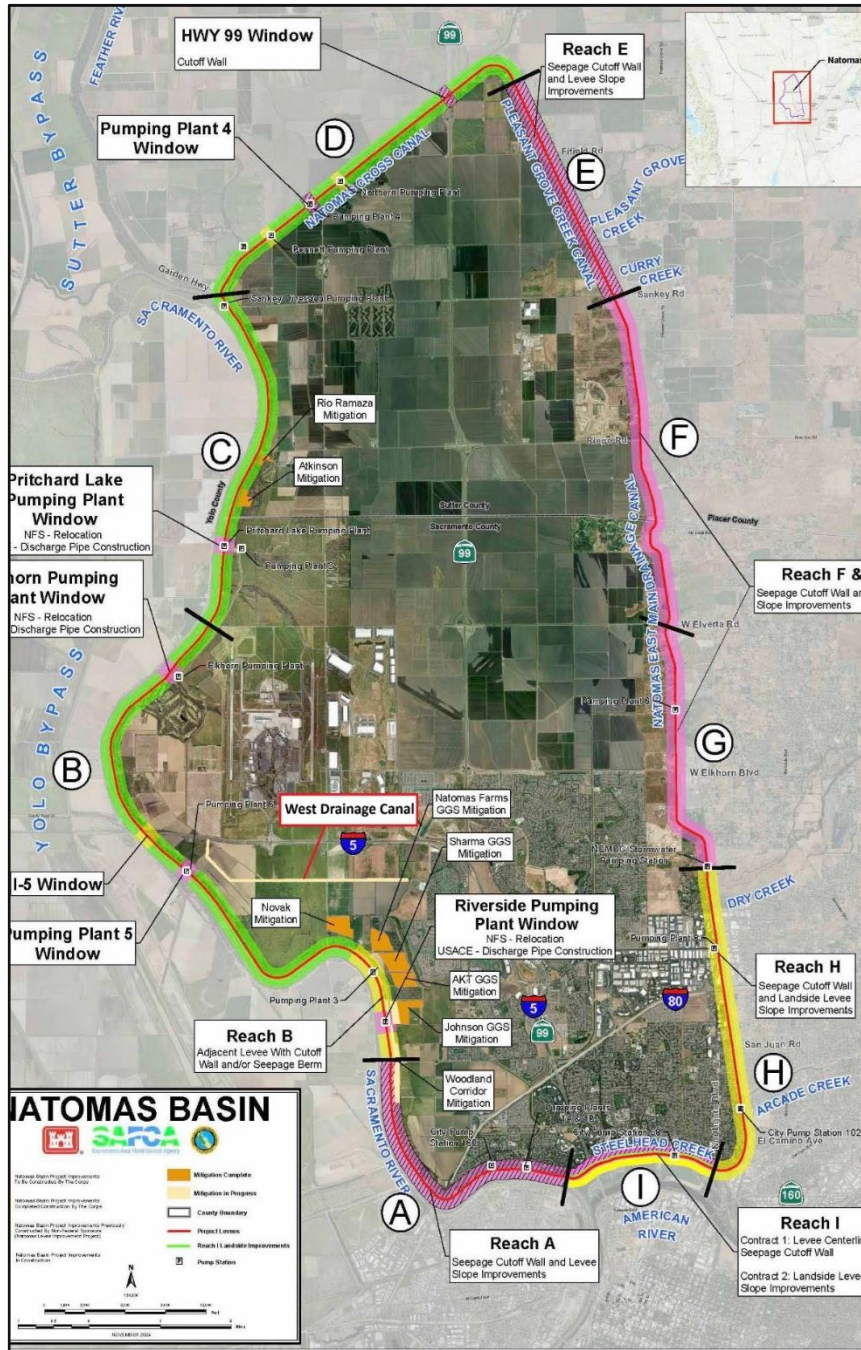
Thank You For Attending This Evening's Public Outreach For The American River Common Features, Natomas Basin, West Drainage Canal (WDC) Project.

# LOCATION OVERVIEW

## Natomas Basin

- Encompasses two counties
- Large population in the southern portion, agriculture and habitat
- Infrastructure: I-5, I-80, SR-99, Sacramento International Airport
- Water pumped in for agriculture and pumped out for drainage





# NATOMAS BASIN PROJECTS

- The Goal of the Natomas Basin Projects is to reduce the likelihood of a high-water event causing harm to human life and the protection from property damage.
- Levee improvements
- Pumping plants
- Improvements to drainage
- Mitigation areas



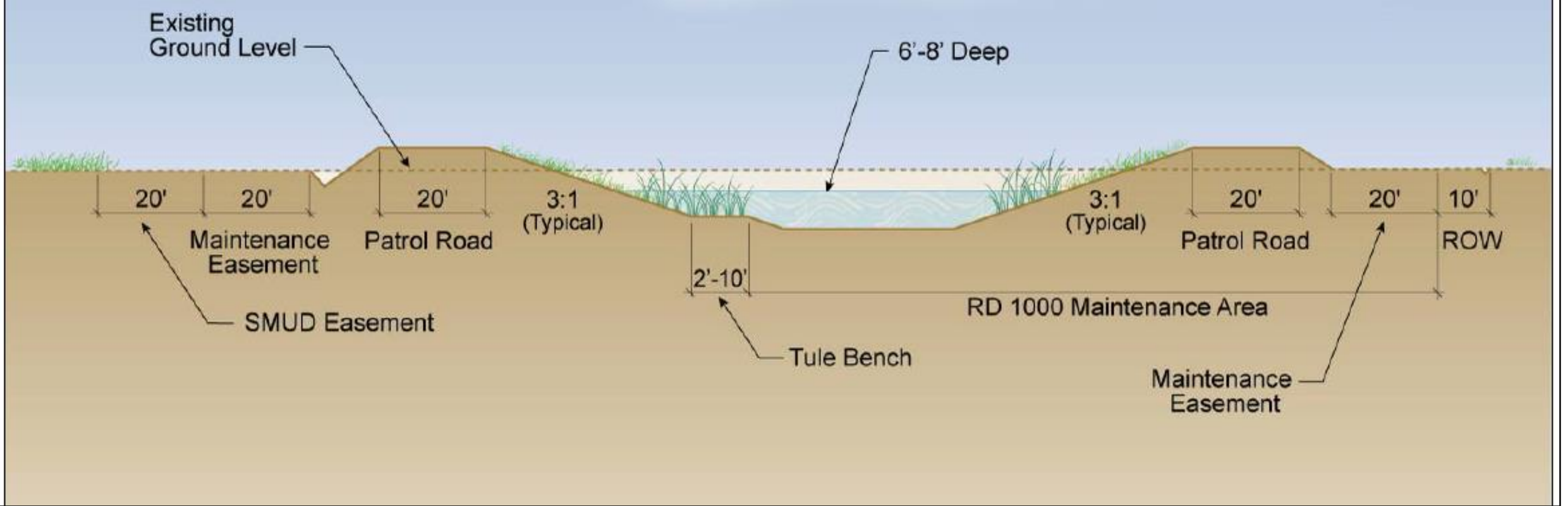
# WHY IS THIS PROJECT NEEDED?

1. Current conditions includes have increased erosion, damaging near by utilities.
2. It is needed to improve connection for Giant Garter Snakes populations to created habitat.
3. Bring the canal farther from the airport to possibly reduce bird strike.

# WHAT ARE WE PLANNING TO DO?

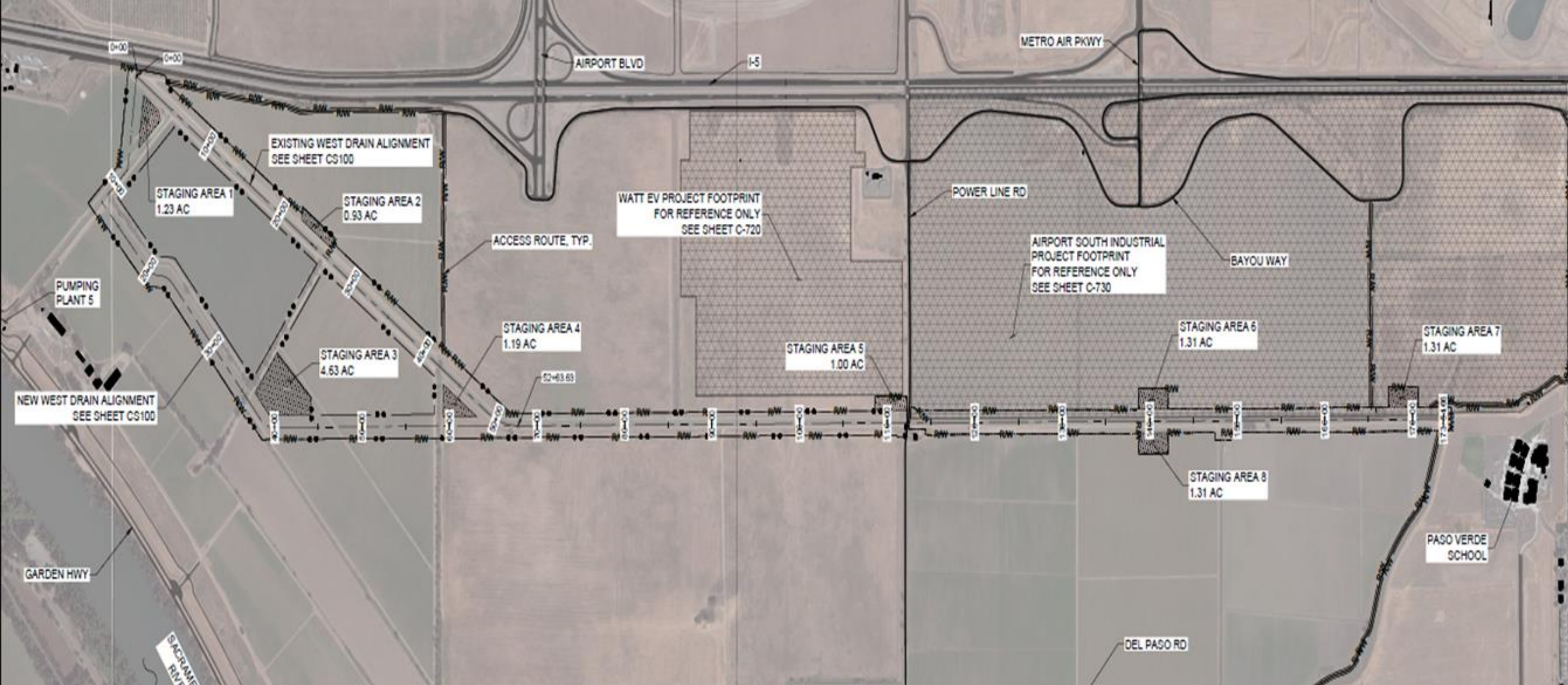
- Flatten the slopes to a 3:1 ratio
- Realignment of the Western Portion of the West Drainage Canal away from the airport
- Create a tule bench to act as GGS habitat.





# WDC CANAL POST PROJECT

- This is an example of the finished project cross section.
- Features would include two improved maintenance road, a tule bench, and better definition of the area for the canal.



# WDC FINAL ALIGNMENT

Showing staging areas, new alignment or the project, and the portion of the canal to be filled in.

# ENVIRONMENTAL CONSIDERATIONS FOR THE WDC PROJECT

- The Supplemental Environmental Assessment was needed to for the following reasons:
  1. While the West Drainage Canal project was covered in previous NEPA documentation the new alignment required evaluation for the possibility for new impacts.
  2. The level of detail describing the WDC Project was insufficient to fully cover the current project design.
  3. The need to cover species that are now protected under the Endanger Species Act and are now protected by the Federal Government.

This evaluation included:

- Cultural resources
- Impacts to habitat for the Giant Garter Snake and the Yellow Billed Cuckoo.
- Reducing the take of riparian habitat.
- Supplemental Environment Assessment at <https://www.spk.usace.army.mil/natomas/>

# EXPECTED CONSTRUCTION SCHEDULE

- The US Army Corp of Engineers is expecting to award the WDC Project contract at the beginning of the 2028 fiscal year and to begin construction at the beginning of Spring 2028.
- The work is expected to take 2 construction seasons, finishing Fall of 2030.
- Water would still be available for irrigation, utilities and to be routed for flood fighting measures.



# CONTACT INFORMATION

- Send all email questions to:  
[DLL-CESPK-WDC@usace.army.mil](mailto:DLL-CESPK-WDC@usace.army.mil)  
Subject: West Drainage Canal
- Or hard copy mail to:  
U.S. Army Corps of Engineers  
ATTN PAO: West Drainage Canal  
1325 J Street  
Sacramento, CA 95814
- To view the Draft copy of the  
West Drainage Canal's  
Supplemental Environment  
Assessment:  
<https://www.spk.usace.army.mil/natomas/>