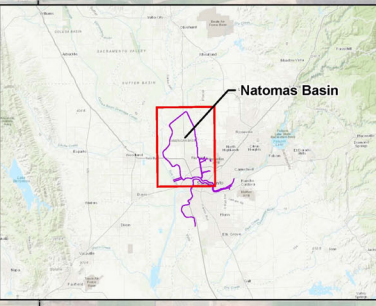


Reach D
 Pipeline Replacement, Drainage Canal Relocation, and Seepage Cutoff Wall Windows Closure - Construction FY 19 & 20

Reach D PP4
 Pumping Plant 4 Replacement - FY 21

Reach E
 Seepage Cutoff Wall and Levee Slope Improvements - FY 21



NLIP Window
 Pritchard Lake/
 Pumping Plant 2

Reach F
 Seepage Cutoff Wall and Levee Slope Improvements - FY 22

NLIP Windows
 General Seepage & Stability Improvements Along with Utility Crossing Improvement - FY 23

NLIP Window
 Elkhorn Pumping Plant

Reach G
 Seepage Cutoff Wall and Levee Slope Improvements - FY 22

Alternative Methods
 Alternative Methods Across Roadways and Other Utility Crossings that no Other Seepage Remediation is Practical to Implement - FY 24

NLIP Window
 Interstate 5 - FY 21

NLIP Window
 Pumping Plant 5 - FY 23

Reach B
 Adjacent Levee With Seepage Cutoff Wall and/or Seepage Berm - FY 20

Reach H
 Seepage Cutoff Wall and Landside Levee Slope Improvements - FY 19 & FY 20

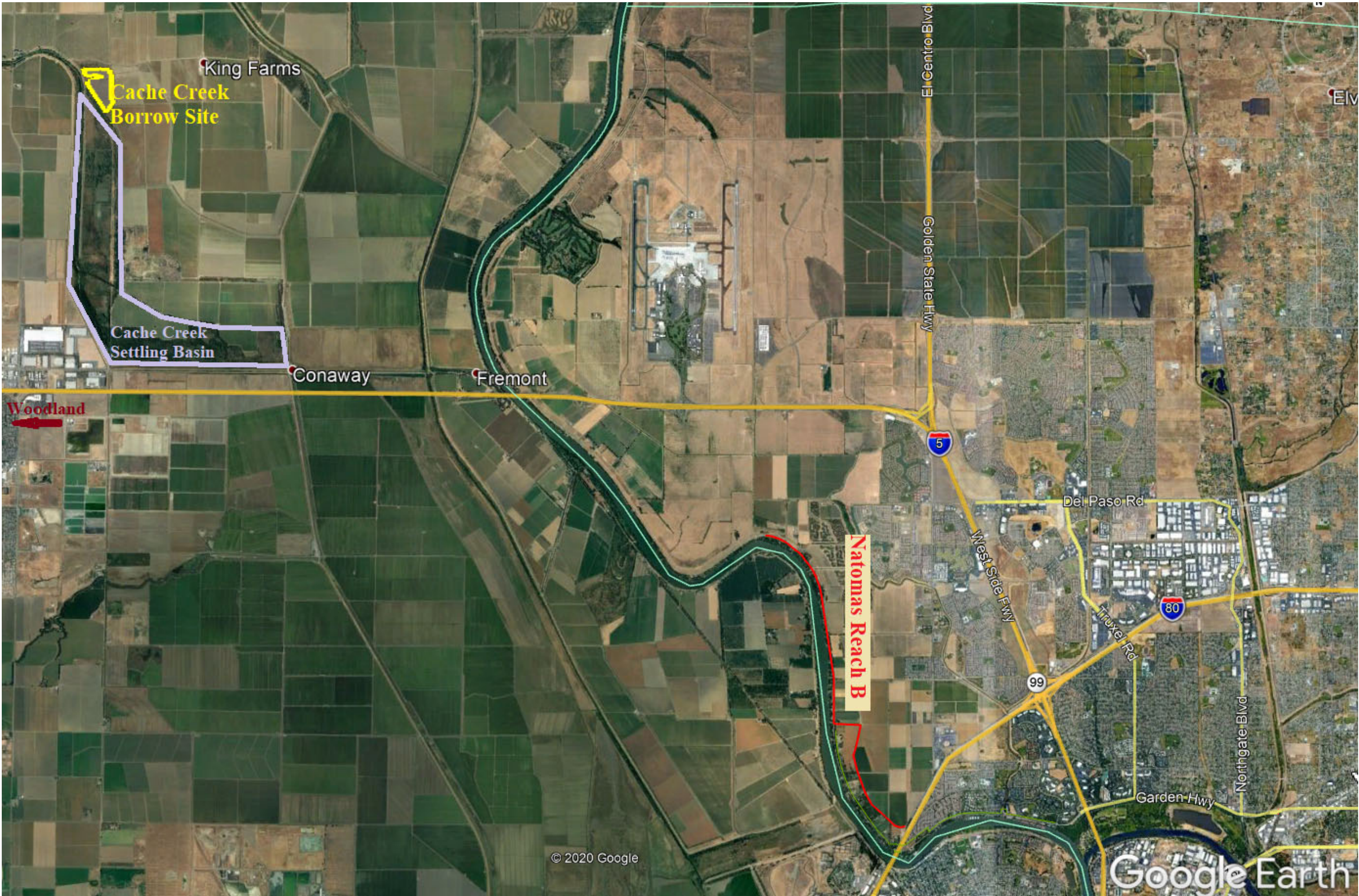
NATOMAS BASIN

- Natomas Basin Project Improvements To Be Constructed By The Corps
- Natomas Basin Project Improvements Previously Constructed By Non-Federal Sponsors (Natomas Levee Improvement Project)
- Natomas Basin Project Improvements In Construction
- Pump Station
- Project Levees
- County Boundary

Scale: 0 to 12,000 Feet / 0 to 2 Miles
 JUNE 2019

Reach A
 Seepage Cutoff Wall and Levee Slope Improvements - FY 22 & 23

Reach I
 Contract 1: Levee Centerline Seepage Cutoff Wall - FY 19 & FY 20
 Contract 2: Landside Levee Slope Improvements - FY 22



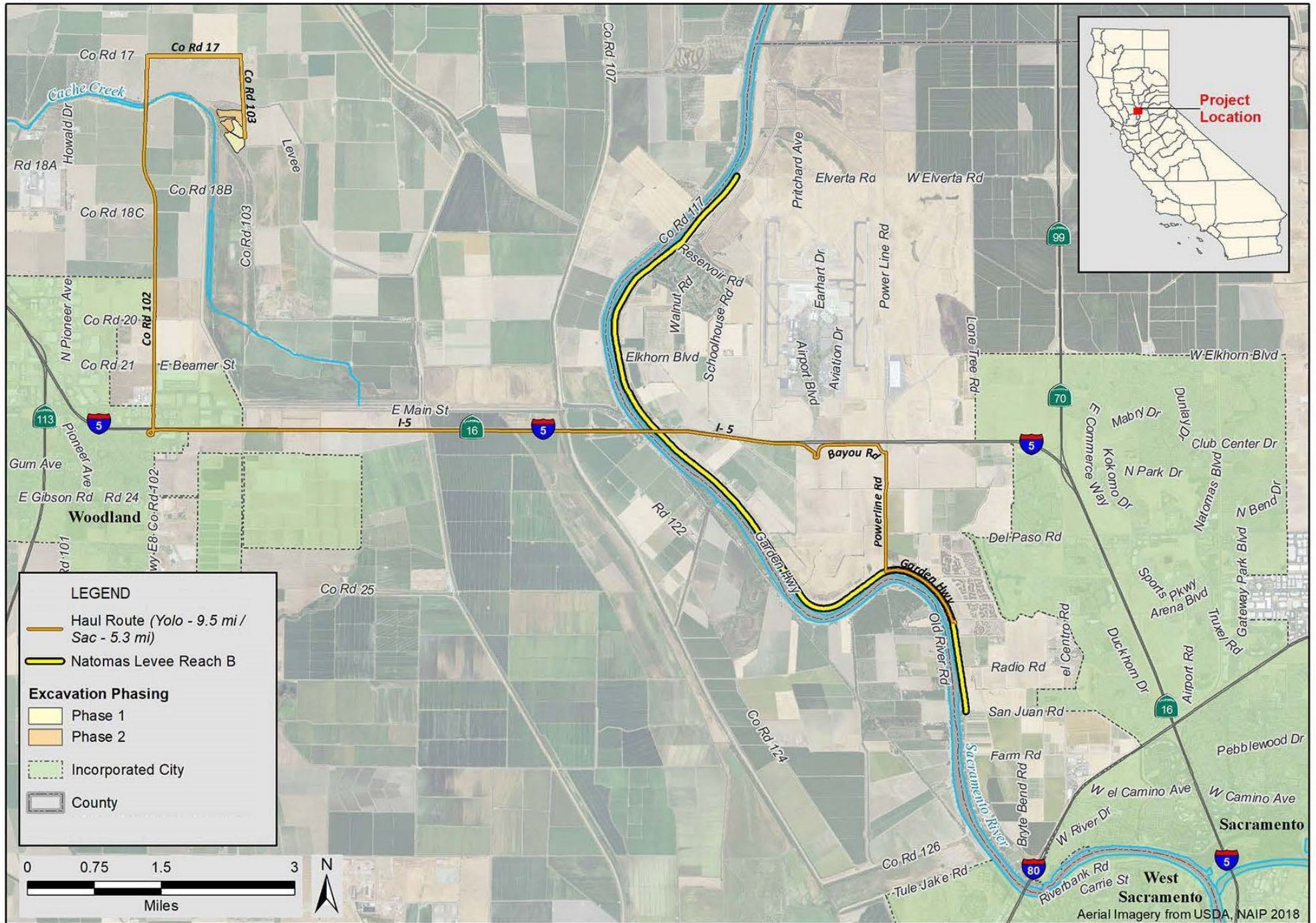


Figure Source: GEI Consultants, Inc. 2020.

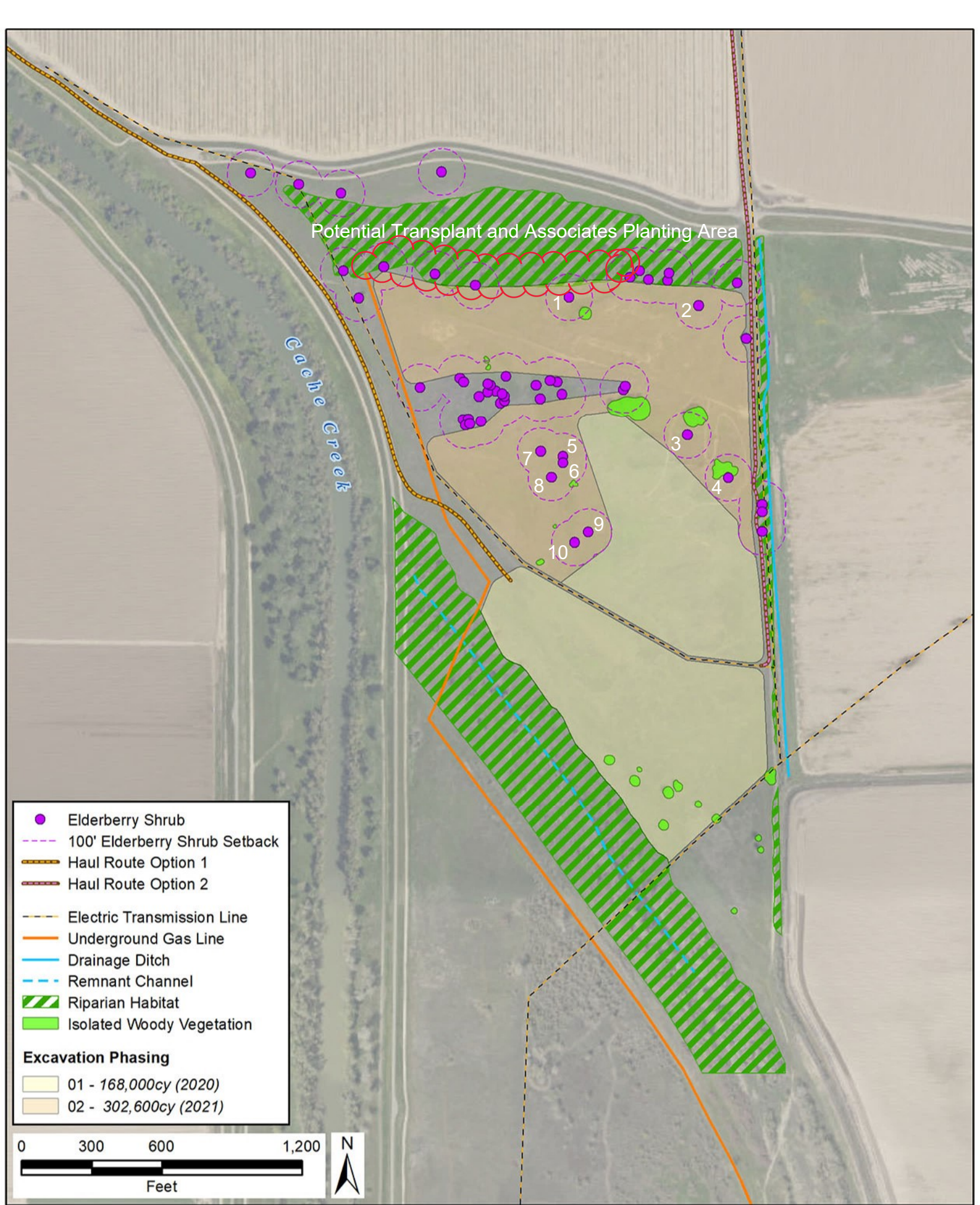


Figure Source: GEI Consultants, Inc.2020.



Legend

Yolo County Subvention Map 10/11
Displaying: **Desig**

- Non-Prime Active
- Non-Prime Non-Renewal
- Prime Active
- Prime Non-Renewal

