

Project Overview

In 2006, federal, state, and local flood risk management officials determined that the levees surrounding the Natomas Basin provide less than a 100-year level of protection. This means that there is greater than a one-in-100 chance in any given year that flooding could occur.

A collaborative effort between the U.S. Army Corps of Engineers (USACE), Central Valley Flood Protection Board (CVFPB), California Department of Water Resources (DWR), and the Sacramento Area Flood Control Agency (SAFCA) will reduce the risk of major flooding, improve reliability and resiliency of our region's levee systems, strengthen aging infrastructure, and ensure improved performance during future flood events.

Improvements to Natomas Basin levees were originally authorized as part of USACE's American River Common Features project in 1996, which was intended to improve the system of levees throughout the greater Sacramento area. However, high water events in 1997 and 2006 showed that the levees in the Natomas Basin were more susceptible to serious under-seepage and slope instability than previously thought.

In 2010, a post-authorization change report was completed, detailing a comprehensive plan to further improve Natomas Basin levees. The current project to improve the 42-mile ring of levees surrounding the basin was authorized in 2014. SAFCA completed the first 18 miles of levee improvements and USACE is constructing the remaining 24 miles.

Project Partners



Central Valley Flood Protection Board
California Dept. of Water Resources
Sacramento Area Flood Control Agency



Contact

**U.S. Army Corps of Engineers
Sacramento District**

(916) 557-5100

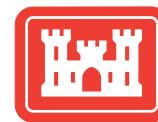
spk-pao@usace.army.mil

For More Information

Project Webpage
www.natomaslevees.com

Sacramento District Homepage
www.spk.usace.army.mil

U.S. Army Corps of Engineers Homepage
www.usace.army.mil



**US Army Corps
of Engineers®**



BUILDING STRONG®

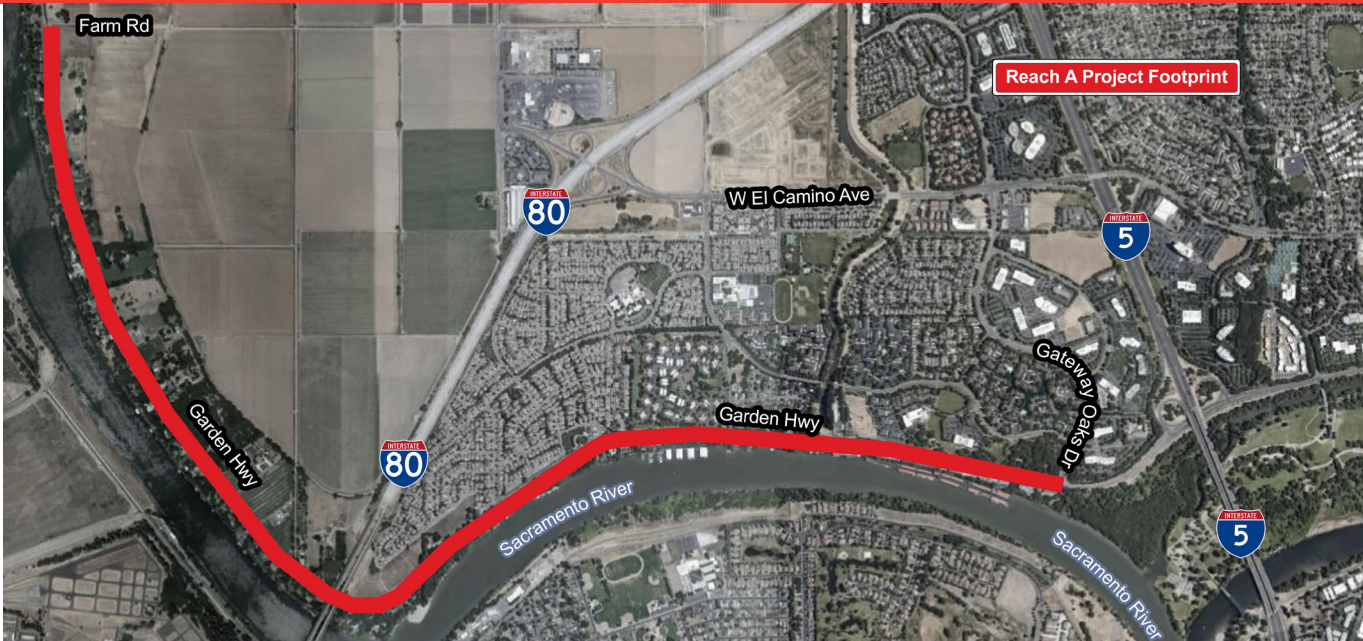
NATOMAS BASIN REACH A LEVEE IMPROVEMENTS

Levee Improvements

Levee systems are part of our nation’s landscape and are important to communities because of the benefits they provide. The American River Common Features (ARCF) Natomas Basin Project includes improvement measures to address seepage, slope stability, erosion, and overtopping concerns that weaken our levee systems and could have catastrophic impacts for residents and businesses in the Sacramento region.

Levee improvements constructed by USACE will be made using a range of risk-reducing tactics:

- Installation of seepage cutoff walls, up to 145 feet deep at some locations
- Seepage berms
- Relief wells
- Levee widening
- Installation of blanket drains
- Modification/Replacement of pump stations



ARCF Natomas Basin Reach A

The Natomas Basin project breaks up the 42 miles of levee surrounding the Natomas Basin into nine smaller segments, or reaches, in order to better manage improvements.

Reach A is a 3.5-mile segment that runs along the Sacramento River east levee beginning at the intersection of Garden Highway and Gateway Oaks Dr and extending upstream to approx. Farm Rd.

A shallow cutoff wall was constructed along the Garden Highway levee in this reach after the 1986 flood to address through-levee seepage. Since then, additional critical levee destabilization issues have been identified. Our focus now is to construct features that complement and expand on those previous improvements by installing deep seepage cutoff walls, widening the levee, and constructing seepage berms to further reduce the risk of a levee failure that could lead to the uncontrolled release of water into the Natomas Basin and its communities.

Our goal is to construct Reach A levee improvements from Spring 2022 to Winter 2024.

Levee Construction Impacts

We are working together with the CVFPB, DWR, and SAFCA to assess, manage, and communicate flood risks to residents and businesses -- this is our top priority.

Residents and businesses should expect traffic detours and delays as a result of construction. Other concerns may include construction noise and dust, and environmental impacts due to necessary tree removal and levee widening. We are working to minimize or offset all impacts to the extent practicable.

We intend to keep the lines of communication open through newsletters and other correspondence, media products, industry days, and posting the latest information on our project web page at www.natomaslevees.com

Interested individuals are encouraged to sign up for our e-mail notification list to keep abreast of current construction schedules and events, including any road closures and detours.

