

MARYSVILLE RING LEVEE, PHASES 2B and 3 UTILITY RELOCATIONS SUPPLEMENTAL ENVIRONMENTAL ASSESSMENT AND INITIAL STUDY (SEA/IS)

PUBLIC MEETING

15 December 2020





HOW TO PROVIDE COMMENTS



During the Meeting:

- Questions or comments may be typed into the WebEx “chat” function
- Comments will be addressed in the final SEA/IS

Comment Period is open until January 10, 2021

Mail: U.S. Army Corps of Engineers,
Sacramento District
1325 J Street, Room 1513
Sacramento, CA 95814

-OR-

Ben Waitman
Department of Water Resources
3464 El Camino Avenue, Room 150
Sacramento, CA 95821

Email: spk-pao@usace.army.mil

Benjamin.waitman@water.ca.gov

Use “Marysville 2B and 3 Utility Relocation” in the subject line



MARYSVILLE RING LEVEE PUBLIC MEETING OVERVIEW

- 1) Project Purpose and Description
- 2) NEPA / CEQA Process and Milestones
- 3) Project Impacts
 - Previous Analyses
 - Effects of the Proposed Action
 - Project Mitigations
- 4) Where to Find More Information
- 5) Next Steps
- 6) How to Comment



NEPA CEQA PROCESS

The National Environmental Policy Act (NEPA) was signed into law by President Nixon on January 1, 1970. The California Environmental Quality Act (CEQA) was adopted a few months later and signed into law by Governor Ronald Reagan in 1970.

NEPA and CEQA require the lead agencies to identify and evaluate the significant effects of a project. For an environmental assessment / initial study, if the evaluation concludes less-than-significant effects, complete the decision documents Findings of No Significant Impact or a Notice of Determination.



MARYSVILLE RING LEVEE MILESTONES

MILESTONES		DATE FOR COMPLETION
COMPLETION OF THE DRAFT SEA/IS		12/10/2020
PUBLIC COMMENT PERIOD		12/11/2020 to 01/10/2021
NOTICE OF THE COMPLETION OF THE FINAL SEA/IS		02/01/2021
COMPLETION OF THE FINDING OF NO SIGNIFICANT IMPACT		03/01/2021
COMPLETION OF THE NOTICE OF DETERMINATION		03/01/2021



MARYSVILLE RING LEVEE PURPOSE

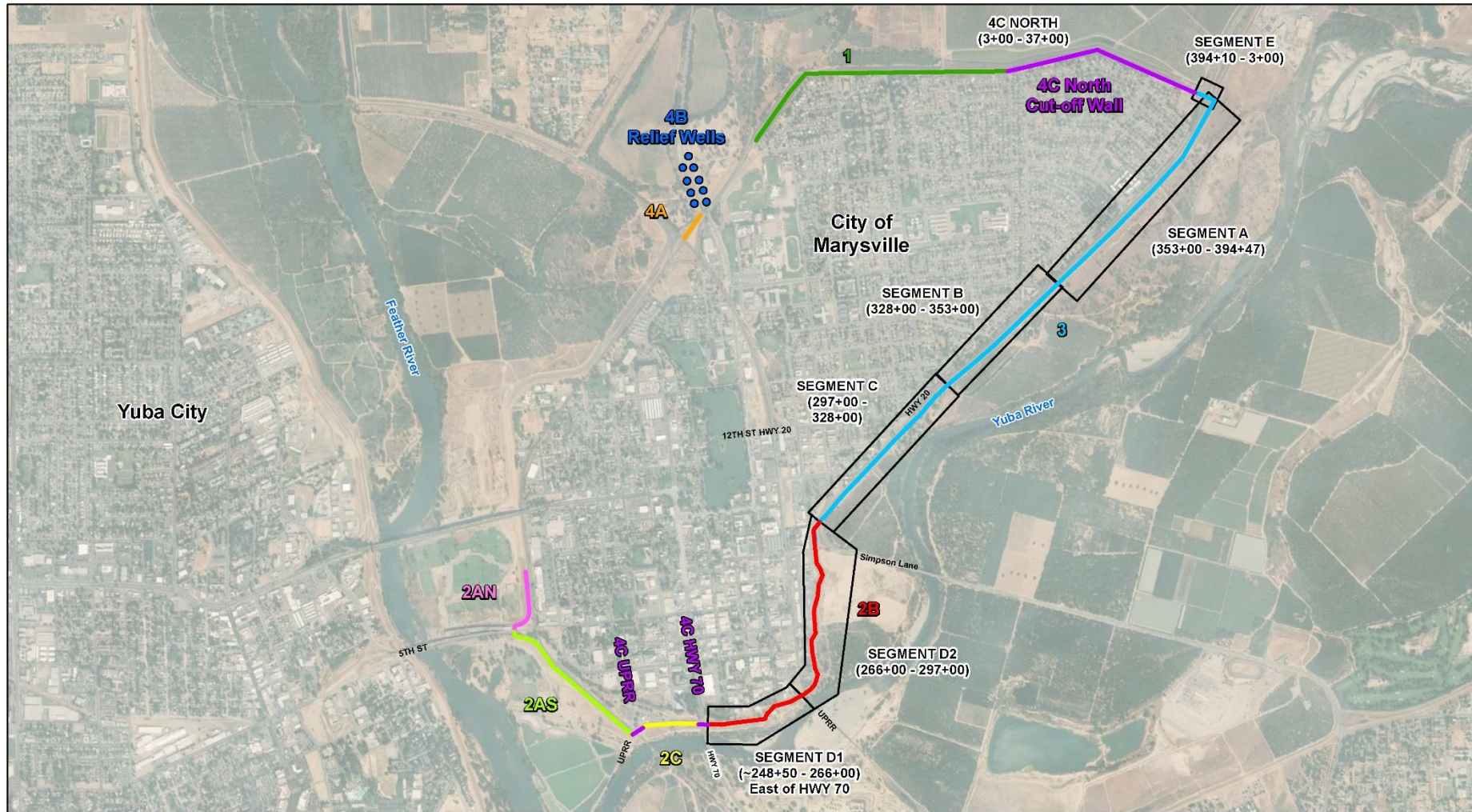
The purpose of the MRL Project is to:

- Reduce flood risk to the City of Marysville.
- Improve Levee Toes & Embankments and Construct Cut Off Walls
- Construction will require relocation of communication, gas, and electric transmission and distribution utilities to locations outside the original project footprint.





MARYSVILLE RING LEVEE PHASES



<p>Legend</p> <ul style="list-style-type: none"> ● PHASE 4B RELIEF WELL ○ PHASE 4C — PHASE 2C SCHEDULED CONSTRUCTION 2022 — PHASE 1 (COMPLETED 2014) — PHASE 4A (COMPLETED 2017) — PHASE 2B SCHEDULED CONSTRUCTION 2021-2022 — PHASE 3 SCHEDULED CONSTRUCTION 2020-2022 — PHASE 2A SOUTH COMPLETED 2019 — PHASE 2A NORTH COMPLETED 2018 		<p>□ SEGMENT</p>
---	--	------------------

FIGURE 1
Marysville Ring Levee Project

CONSTRUCTION PHASES
MARYSVILLE, CA
DECEMBER 15th 2020

1:18,000

0 500 1,000 2,000 Feet

N

US Army Corps of Engineers
Sacramento District



MARYSVILLE RING LEVEE

Proposed Action Construction Activities

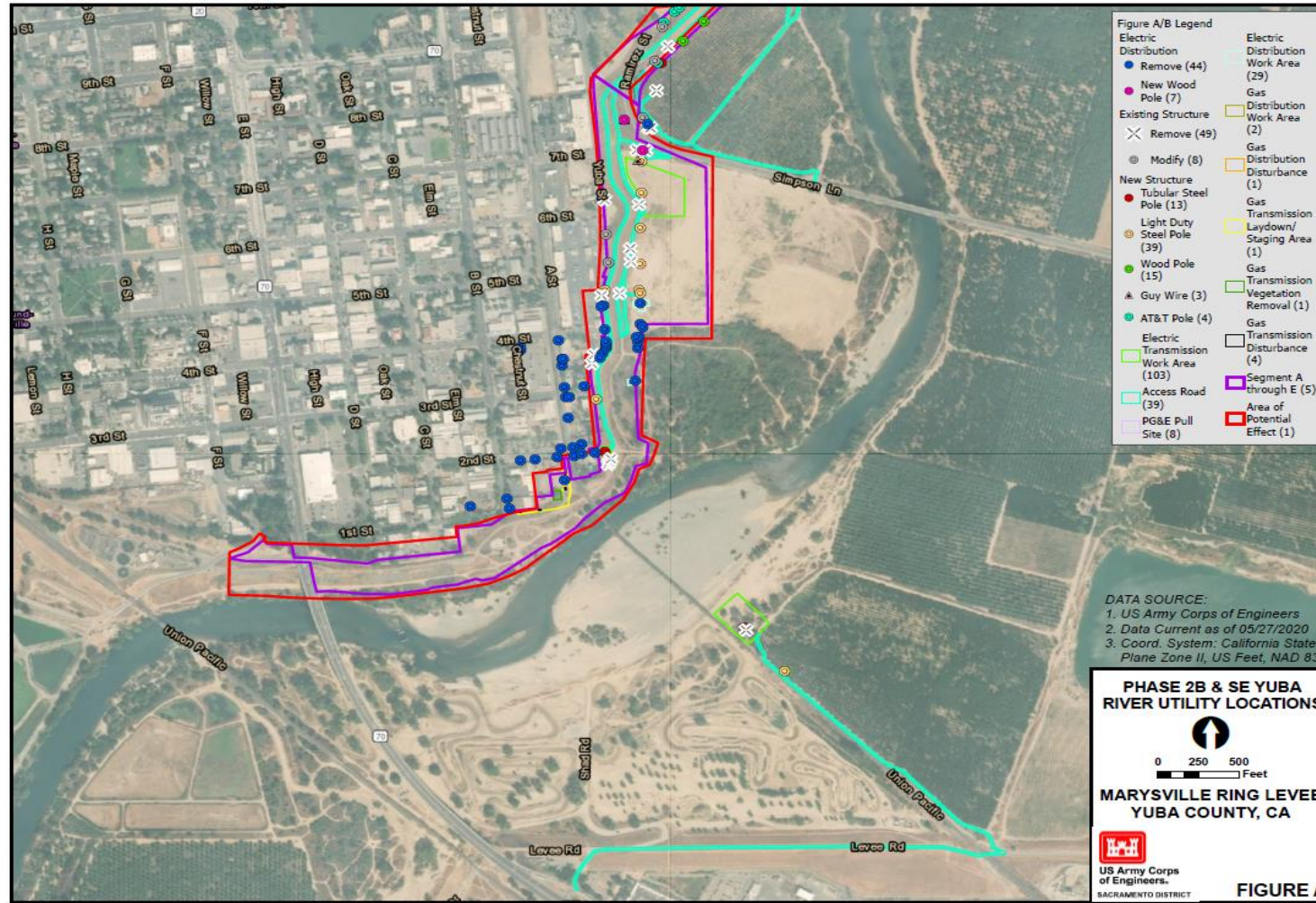
Dates for Construction: March 2021 to November 2021.

Utility Construction and Levee Construction Phase 3, Segments A & B

- Electrical transmission and distribution construction
- Gas transmission and distribution construction
- Communication companies' construction



PROJECT AREA – PHASE 2B



Date: 12/8/2020 Path: C:\Users\2edzsp\Documents\ArcGIS\Projects\MRL\MRL_public_meeting_slides_20201203\2.aprx



PROJECT AREA – PHASE 3





PREVIOUS ANALYSES

Marysville Ring Levee, Yuba River Basin, California Final Environmental Assessment/Initial Study (2010 EA/IS)

- Analyzed the Marysville Ring Levee Project
- No significant impacts to the environment with mitigation

Marysville Ring Levee Phases 2B and 3 - Supplemental Environmental Assessment/Initials Study (2019 SEA/IS).

- Further Analyzed Phases 2B and 3 of Marysville Ring Levee Project
- No significant impacts to the environment with mitigation

The current Analysis is part of this Phase of the MRL Project

All reports can be found at: <https://www.spk.usace.army.mil/Missions/Civil-Works/Marysville-Ring-Levee/>.



MARYSVILLE RING LEVEE Utility Relocation SEA/IS



Marysville Ring Levee Phases 2B and 3 – Utility Relocation
Supplemental Environmental Assessment/Initials Study (Current
Analysis).

Resources analyzed, include:

Greenhouse Gas, Public Utilities, Water Resources, Special Status Species, Air Quality, Vegetation and Wildlife, Cultural Resources, Agriculture and Prime Farmland, and Traffic



MARYSVILLE RING LEVEE Utility Relocation SEA/IS



Potential Effects of the Proposed Action:

Greenhouse Gas and Air Quality

- Greenhouse Gas emissions expected to fall below federal and local thresholds
- Potential temporary exceedance of emissions threshold for PM10

Public Utilities

- Temporary disruptions to utility services may result from the proposed action
- Disruptions would be reduced through the use of temporary power poles and gas distribution structures
- Affected customers would be notified prior to potential service disruptions



MARYSVILLE RING LEVEE Utility Relocation SEA/IS

Potential Effects of the Proposed Action:

Agriculture and Prime Farmland:

- Temporary effects would occur during utility relocation
- No Prime or Unique Farmland would be permanently removed from agricultural

Vegetation and Wildlife:

- Vegetation and Wildlife habitat would be avoided to the extent practicable
- USFWS may complete a Supplemental Coordination Act Report that may include additional recommendations for wildlife habitat loss from temporary vegetation removal



MARYSVILLE RING LEVEE Utility Relocation SEA/IS



Potential Effects of the Proposed Action:

Special Status Species:

- Valley Elderberry Longhorn Beetle (VELB) habitat is present
- Elderberry Shrubs would be marked and avoided
- USACE is consulting with the USFWS and Project activities would follow the mitigations outlined in the USFWS Biological Opinion
- Trees to be removed during bird nesting season would require pre-construction surveys for active nests





MARYSVILLE RING LEVEE Utility Relocation SEA/IS



Potential Effects of the Proposed Action:

Wetlands and Water Resources:

- Agricultural ditches would be avoided
- Best management practices would be implemented to minimize soil disturbance during rain events
- The project would obtain permits mandating best management practices to prevent accidental discharge to waters and wetlands



MARYSVILLE RING LEVEE - Utility Relocation SEA/IS



Potential Effects of the Proposed Action:

Cultural Resources:

- A finding of no adverse effects is expected to be carried forward for the proposed action
- No additional mitigation would be required to resolve adverse effects to historic properties pursuant to 36 CFR 800.6

Tribal and State Historic Preservation Office (SHPO) Section 106 Consultation

- USACE is in the process of completing Tribal and SHPO consultation
- The consultation is expected to be completed by February 15th 2021



MARYSVILLE RING LEVEE Utility Relocation SEA/IS



Project Mitigation for Potential Environmental Effects

All applicable mitigation measures from the 2010 EA/IS and 2019 SEA/IS would be implemented

Additional mitigation measures are described in the 2020 MRL Utility Relocation SEA/IS

With the inclusion of these mitigation measures, the environmental effects of the proposed action would be reduced to levels considered Less than Significant for NEPA and CEQA.



WANT MORE INFORMATION?

UNITED STATES ARMY CORPS OF ENGINEERS PROJECT WEBSITE

<https://www.spk.usace.army.mil/Missions/Civil-Works/Marysville-Ring-Levee/>

Provides Marysville Ring Levee Project Information:

- Project Documents
- Project Figures
- Marysville Ring Levee News
- Public Meeting Information
- How to Submit Comments



NEXT STEPS



NEPA/CEQA NEXT STEPS



The Draft Supplemental EA/IS, Draft FONSI, and Draft Mitigated Negative Declaration are available at:

<https://www.spk.usace.army.mil/Missions/Civil-Works/Marysville-Ring-Levee/>

Public comment period:

December 11th 2020 through January 10th 2021



HOW TO COMMENT



HOW TO PROVIDE COMMENTS



During the Meeting:

- Questions or comments may be typed into the WebEx “chat” function
- Comments will be addressed in the final SEA/IS

Comment Period is open until January 10, 2021.

Mail: U.S. Army Corps of Engineers,
Sacramento District
1325 J Street, Room 1513
Sacramento, CA 95814

-OR-

Ben Waitman
Department of Water Resources
3464 El Camino Avenue, Room 150
Sacramento, CA 95821

Email: spk-pao@usace.army.mil

Benjamin.waitman@water.ca.gov

Use “Marysville 2B and 3 Utility Relocation” in the subject line

A photograph of a small pond next to railroad tracks. The pond is in the middle ground, reflecting the sky. To the right of the pond, there is a grassy embankment. In the foreground, there are railroad tracks with gravel ballast, and a paved path runs along the bottom right. The background shows a grassy field and some trees under a clear sky.

**CHAT COMMENTS
USACE WEBSITE**

THANK YOU