

ISABELLA LAKE DAM SAFETY MODIFICATION PROJECT (DSMP)

U.S. FOREST SERVICE VISITOR INFORMATION CENTER – SUPPLEMENTAL ENVIRONMENTAL ASSESSMENT (EA)

PUBLIC SCOPING MEETING

JUNE 4, 2020

Virtual Meeting: WebEx and Teleconference



US Army Corps
of Engineers®





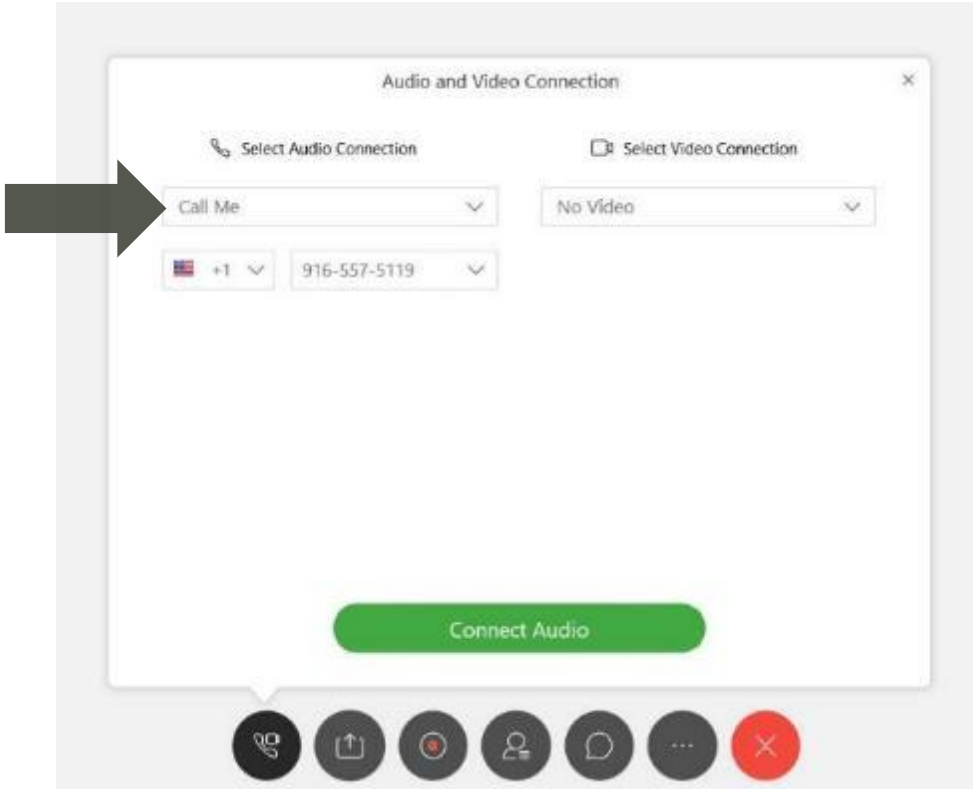
MEETING AGENDA



- WEBEX Orientation
- Team Introductions
- Isabella Dam Safety Modification Project Overview
- Facility Relocation Overview
- Proposed Problem Statement
- Public Scoping for Visitor Use, Ways to Provide Input
- Closing Comments



HAVE WEBEX CALL YOU OR CALL IN



WebEx by Cisco (join meeting and have the meeting Call Me):
<https://usace.webex.com/usace/j.php?MTID=m843b81187e8d634556313a30445051e2>

(or, if you already have a WebEx Account, visit the WebEx homepage and enter this Meeting number: 961 079 357)

Join by phone only (not recommended, but available):

Call-in toll-free number: 1-877-336-1829

Access Code: 8841488

Security Code: 1111

It is best to open the meeting, and have the meeting call your telephone. That way, your web profile is connected to your audio (phone) connection. Enter Meeting # 8841488 when prompted.

You do not need to enter an Attendee ID, but it can be helpful. If you do not have an ID, press #.



PHONE ONLY USERS:

This meeting will also be accessible to phone only users, by providing slides and materials in advance of the meeting time (June 4, 2020, from 4-5 pm PDT). Information and materials can be found at

bit.ly/isabelladam

If you have additional questions, please contact the
Public Affairs Office email at

isabella@usace.army.mil

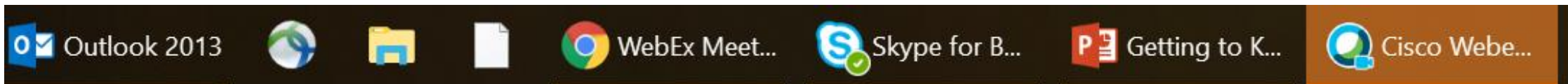
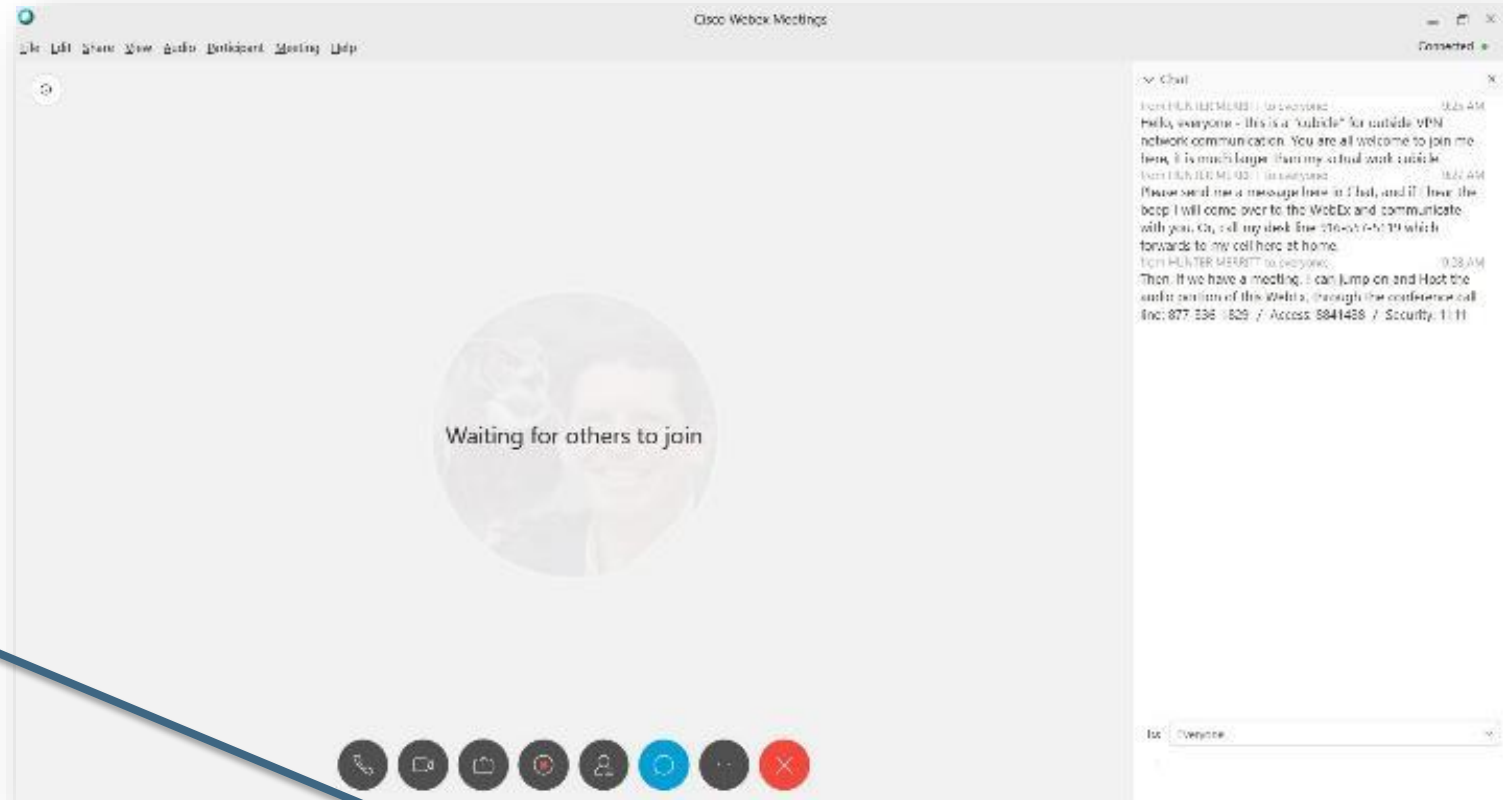


GETTING STARTED ON WEBEX

Participants should open WebEx in a separate window, not in a browser. If a browser option is chosen, **Internet Explorer** is preferred (there can be issues with using WEBEX features on other browsers such as Google Chrome, Safari, or Firefox).

Cisco WebEx icon will appear on your taskbar (at the bottom of the screen).

Click the taskbar icon to reenter/view the WebEx meeting space.





INTRODUCTIONS



Stephen Martinez
Program Manager



Matthew Powell
Project Manager



Hunter Merritt
Lead Planner



Mariah Brumbaugh
Environmental Lead



Rick Brown
Public Affairs



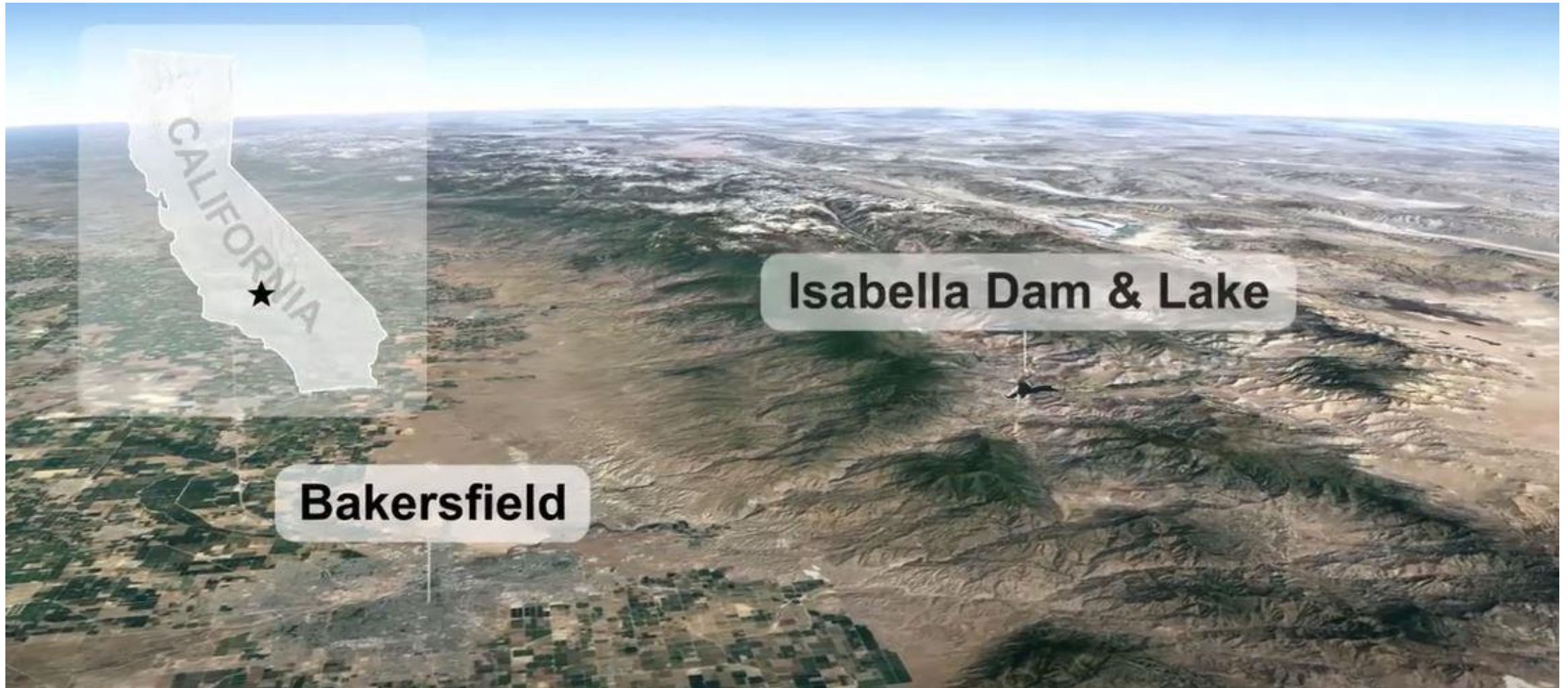
Floyd Bolton
Deputy Resident Engineer



Alfred Watson
District Ranger, USFS



ISABELLA DAM(S) AND LAKE



For more information on the Isabella DSM Project, visit bit.ly/isabelladam

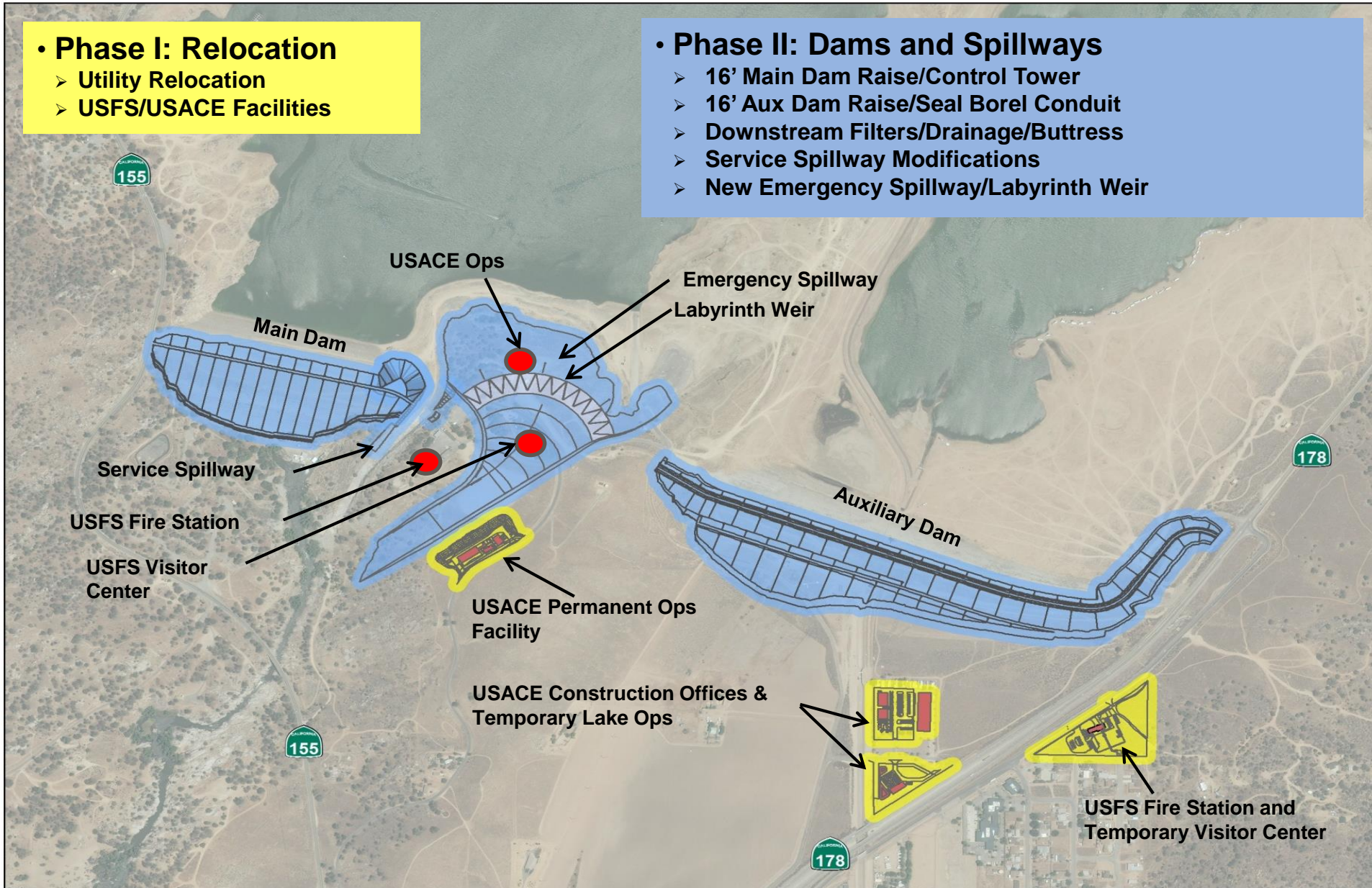
ISABELLA DSMP – PROGRAM OVERVIEW

• Phase I: Relocation

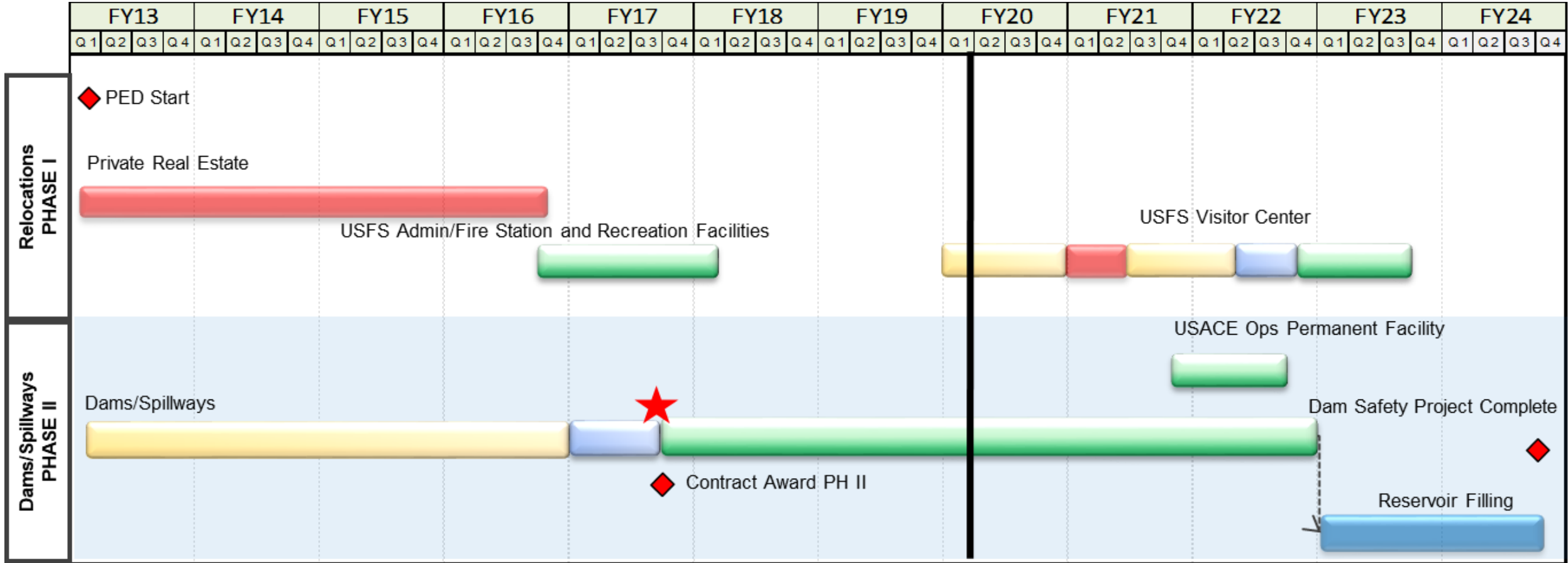
- Utility Relocation
- USFS/USACE Facilities

• Phase II: Dams and Spillways

- 16' Main Dam Raise/Control Tower
- 16' Aux Dam Raise/Seal Borel Conduit
- Downstream Filters/Drainage/Buttress
- Service Spillway Modifications
- New Emergency Spillway/Labyrinth Weir



ISABELLA DSMP – PROGRAM TIMELINE

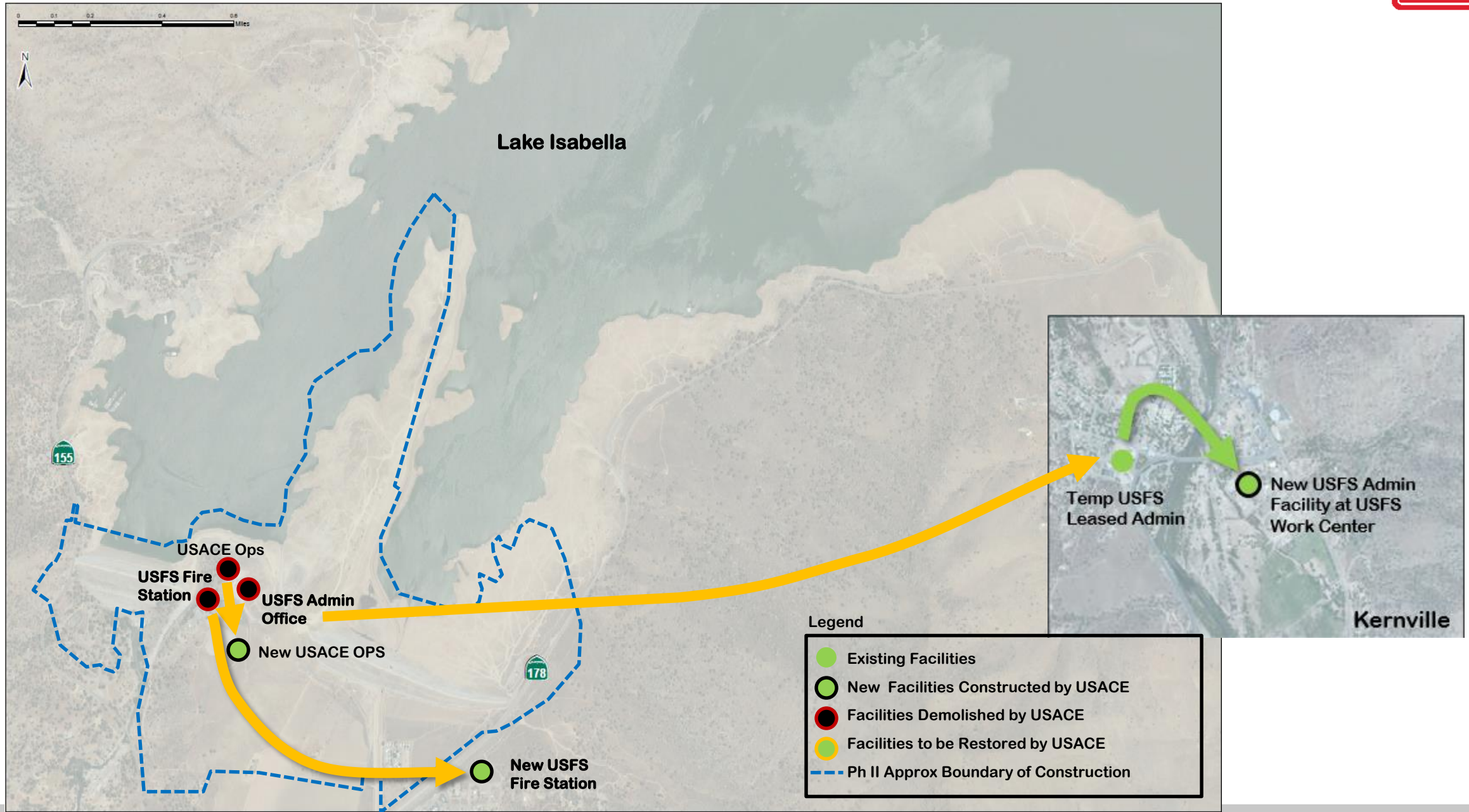


- ◆ Milestone
- Planning/Design (Planned)
- Contract Acquisition (Planned)
- Construction (Planned)
- RE Acquisition (Planned)

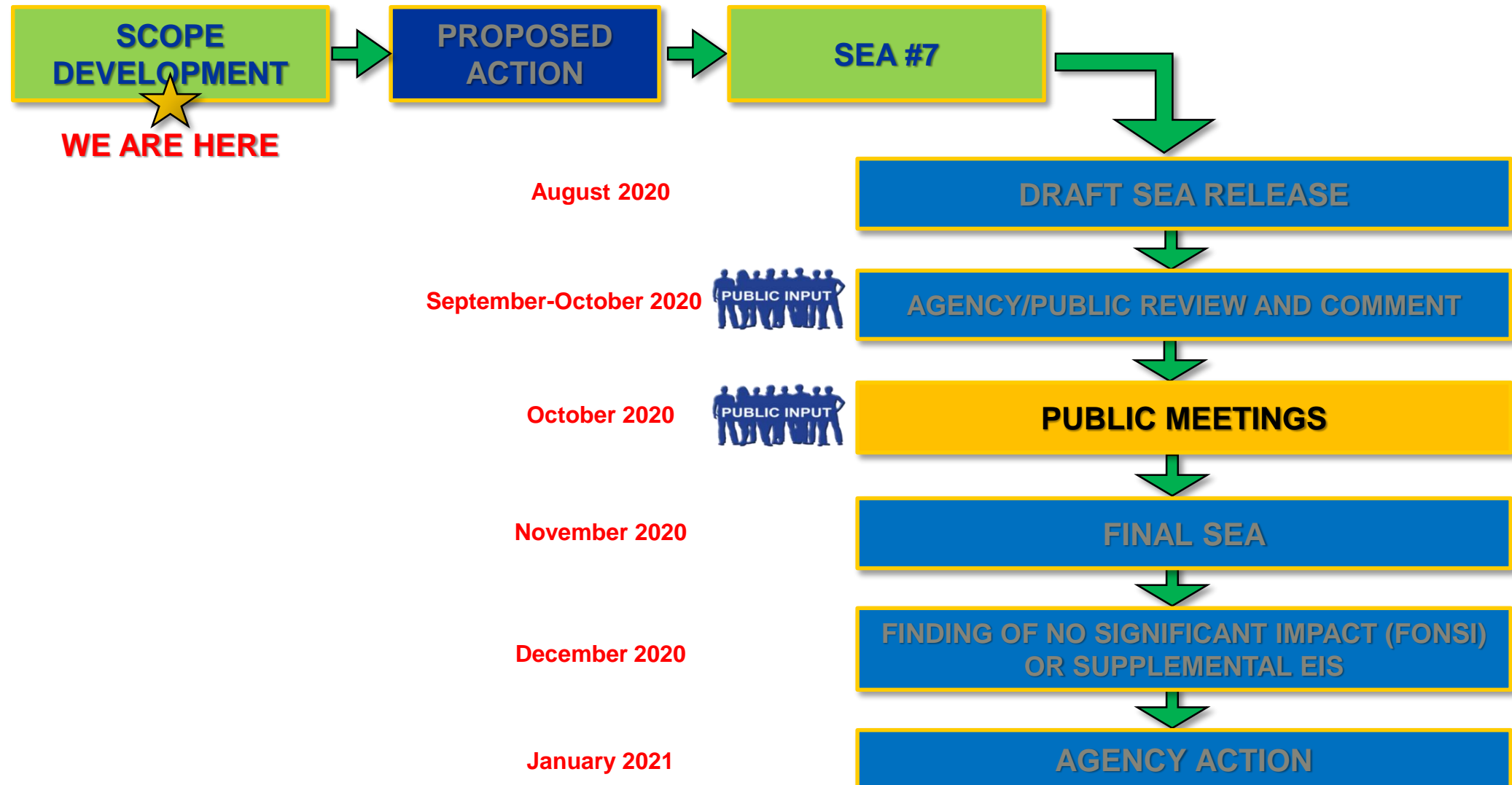


- 2.9 million cubic yards of rock and soil excavation
- Repurposing 2.5 million cubic yards of material at the dam site
- Placing 60,000 cubic yards of concrete during construction
- Construction of emergency spillway

FACILITY RELOCATION OVERVIEW



THE PROCESS





ISABELLA DSMP – SCOPE OF SEA #7

•**SEA #7 would address the construction of a like kind replacement USFS visitor center in the Lake Isabella region**

•**Direct and Indirect Effects**

- Analyze location alternatives for a visitor center in the area near the Township of Lake Isabella
- Analyze the construction of a USFS visitor center in the proposed locations



ISABELLA DSMP – VISITOR CENTER DRAFT PROBLEM STATEMENT



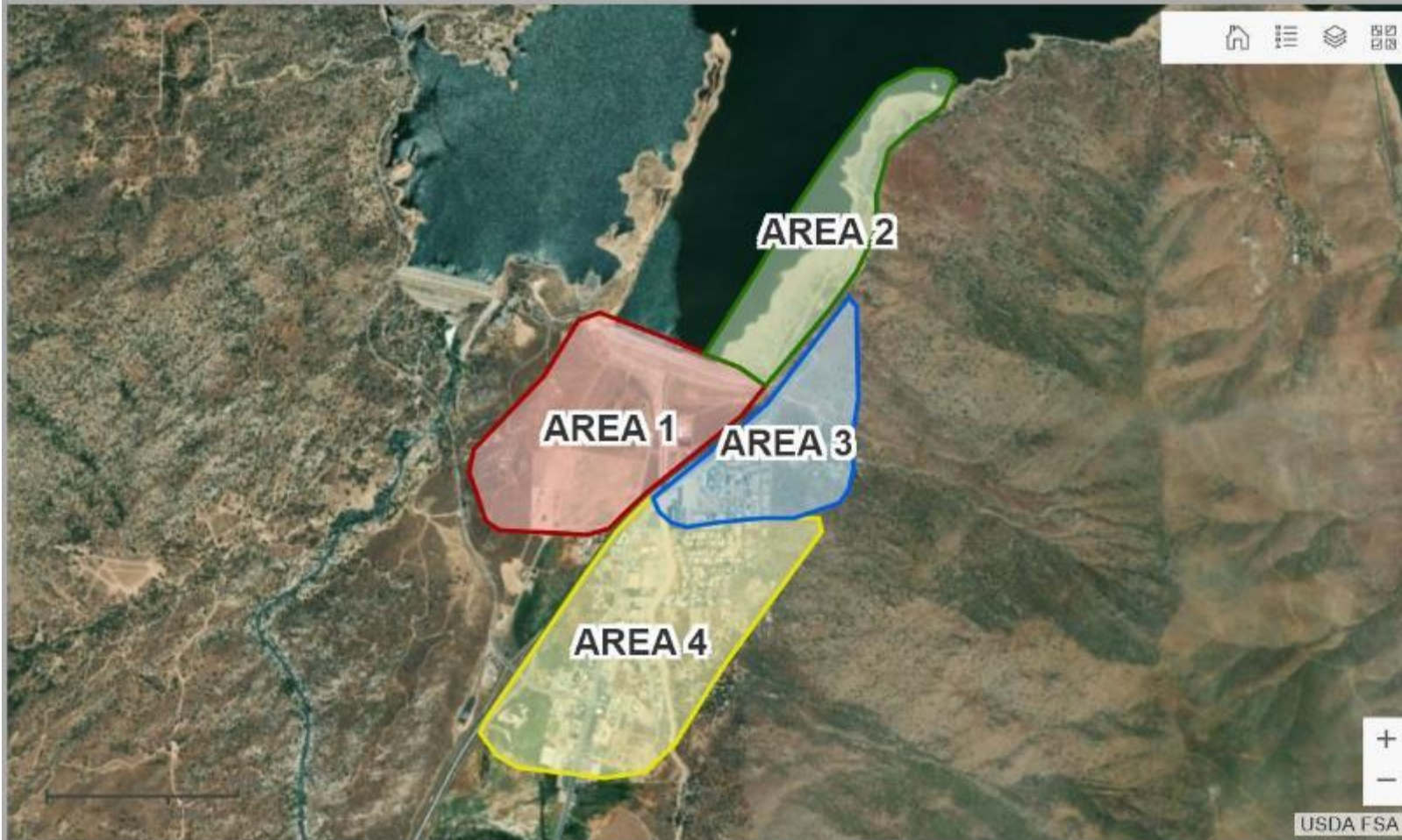
The Supplemental Environmental Assessment (EA) #7 would investigate current conditions and determine needs for visitor use services, to include interpretation and education of the natural, cultural, and historic resources in the gateway communities to the Sequoia National Monument, Sequoia National Forest, and the Kern River Watershed.



PREFERRED METHOD: ONLINE SURVEY

<https://arcg.is/0q0my0>

USFS Visitors Center (Lake Isabella) Public Comment



Permanent USFS Visitor Center (Lake Isabella)

This printable survey is designed to gather input from the Isabella Lake community in regards to site selection of a permanent USFS visitor center in Lake Isabella. As a community member, your feedback is very valuable to our decision-making process. Please take a few minutes to share your thoughts.

This form must be completed no later than 11:59 p.m. on July 9, 2020.

Submissions received after this time will not be considered.

Thank you for your candid feedback!

Isabella Dam Safety Modification Project
U.S. Army Corps of Engineers, Sacramento District



COMMENTS BY “SNAIL MAIL”



U.S. Army Corps
of Engineers
Sacramento District

USFS Visitors Center (Lake Isabella) Public Comment Questionnaire

Purpose

The community of Lake Isabella in Kern County lacks adequate facilities to provide visitor use services, interpretation, and education of the natural, cultural, and historic resources in the valley, which is a gateway to the Sequoia National Monument, Sequoia National Forest, and the Kern River Watershed.

USACE is seeking public input regarding the site selection of a permanent visitor center to be constructed in Lake Isabella. Your comments on this survey will serve as official record of your input and will be used when considering the future home of the Lake Isabella Visitor Center.

Name* _____

Phone:** _____

Address** _____

Email** _____

* Required

** At least one form of contact is required

Your input to the following questions will be considered when determining a permanent location for a visitors center in Lake Isabella. Other factors, including but not limited to, environmental, fiscal, and legal considerations will also be factored into any final decision. **Only one submission per person.**

1. Do you feel that a new, permanent visitors center is needed in Lake Isabella?

____ Yes

____ No ____ Not sure

2. What are the top three services of the former or interim visitors center (Lake Isabella) that you found/find most useful? _____

(over)

Optional digital form is available online:
[Bit.ly/isabelladam](https://bit.ly/isabelladam)

Instructions:

Step 1: Go to website and download

Step 2: Fill out questionnaire

Step 3: Send to our mailing address

Mail to:

U.S. Army Corps of Engineers,

Sacramento District

1325 J Street, attn: Planning Division

Sacramento, CA 95814



QUESTIONS?

COMMENT PERIOD ENDS JULY 9, 2020

For additional information please contact:

MAIL:

U.S. Army Corps of Engineers
Sacramento District
1325 J Street, attn: Planning Division
Sacramento, CA 95814

EMAIL: isabella@usace.army.mil

PHONE: 916-557-5100

WEB: bit.ly/isabelladam

or

<https://www.spk.usace.army.mil/Missions/Civil-Works/Isabella-Dam/Visitor-Center/>