

## **APPENDIX A**

### **SCOPING REPORT**

# **DELTA ISLANDS AND LEVEES FEASIBILITY STUDY SCOPING REPORT**

## **Introduction**

The U.S. Army Corps of Engineers (USACE) initiated the Delta Islands and Levees Feasibility Study at the request of the California Department of Water Resources (DWR), the non-Federal sponsor for the study. USACE is the lead agency in the Feasibility Study, with USACE taking the lead under the National Environmental Protection Act (NEPA).

Numerous agencies, organizations, and individuals participated in the study including the California Department of Water Resources (DWR), U.S. Bureau of Reclamation, U.S. Fish and Wildlife Service, National Oceanic and Atmospheric Administration (NOAA Fisheries), U.S. Environmental Protection Agency, California Department of Fish and Wildlife, Sacramento County, San Joaquin County, Contra Costa County, Yolo County, Alameda County, Solano County, numerous levee maintaining agencies, local landowners and residents.

## **Delta Islands and Levees Feasibility Study**

The feasibility report will present details on the USACE and non-Federal sponsor (California Department of Water Resources) participation needed to implement the selected plan. The report will conclude with a recommendation for Congressional authorization of a project, if justified. It is anticipated that the planning efforts will result in an integrated planning document discussing plan formulation and an Environmental Impact Statement (EIS) which analyzes the alternatives. The EIS would be prepared in accordance with the National Environmental Policy Act (NEPA).

## **Notice of Intent/Preparation**

In compliance with the requirements set forth in NEPA, USACE prepared a Notice of Intent (NOI) describing its intent to prepare an EIS, the possible alternatives, and relevant scoping meeting and contact information. The NOI was posted in the Federal Register, the United States Government's official noticing and reporting publication, on January 31 2013 (Federal Register, Vol. 78, No. 921). The official comment period for the NOI was January 31 2013 to March 15, 2013.

## **Mailings**

USACE developed a postcard which was sent to interested stakeholders and agency contacts. Additionally a previously developed mailing list of interested stakeholders and agency contacts was sent by email notification encouraging attendance at the scoping meetings.

## **Notifications**

Notices briefly introducing the lead agencies, the proposed projects and associated environmental review processes, and the scoping meetings were placed in the Sacramento Bee

and Lodi News newspapers on February 6, 2013. Newsprint releases were published to reach a local and regional public audience that residents routinely rely upon to keep them abreast of local issues. A media release was also emailed out to a number media contacts within the region on February 6, 2013. Attachment A contains copies of the following:

- Notice of Intent
- Notice of Preparation
- Federal Register Publication
- Postcard
- Media Release
- Email Notification

### **Public Meetings**

In February 2013, two scoping meetings were held for the project study. The meetings were held to educate the public about the study efforts and to garner input on the proposed scope, in accordance with NEPA. Refer to Table 1-1 for the USACE planning and NEPA process.

The meetings were held at two different times over the course of two days. On February 19, 2013, the first meeting was conducted from 5:00 to 7:00 p.m. at the Old Sugar Mill in Clarksburg. The second meeting was conducted on February 19, 2013 from 2:00 to 4:00 p.m. at the Sheraton Grand Hotel in Sacramento.

The meeting locations were chosen because they are central to the region. The meeting times were chosen to accommodate both the workday schedules of public agency representatives and the general public, including residents and business owners.

The meetings were open-house style workshops in which attendees could read and view the information about the two projects and interact with project staff, including representatives of USACE and the California Department of Water Resources (DWR). The views expressed in the scoping meeting are summarized as follows:

USACE staff was stationed at display boards to interact with public attendees and provide additional detail or answer any questions. A Power Point presentation was on-going to provide a brief introduction to the including objectives, schedule, environmental compliance, and related flood control work in the region. A fact sheet, providing an overview of the Delta Islands and Levees Feasibility Study including purpose and goals, maps of the corresponding study areas, an overview of the environmental compliance process and timeline, was also made available. Comment cards were prepared so that meeting attendees could provide feedback on the projects. These cards could be filled out during the meeting and given to a project team member. Attachment B contains copies of the following:

- Sign In Sheet
- Meeting Overview
- Display boards
- Power Point presentation
- Fact sheets
- Comment cards

## **Public Feedback**

The views expressed by members of the public at the scoping meeting are summarized as follows:

- Clarifications on data and history of the Delta
- Concerns of siltation in Delta channels
- Recommendation for coordination with other agencies and efforts in the Delta
- Recommendation to evaluate environmental effects of alternatives to water supply, water quality, and aquatic and terrestrial biology

## **Next Steps**

A similar open-house format will be used when this draft integrated feasibility report and EIS are made available for public review and comment. USACE will ensure all agencies, organizations, and individuals who provide comments will be provided a copy of the final integrated feasibility report and EIS.

## **ATTACHMENT A**



REPLY TO  
ATTENTION OF

**DEPARTMENT OF THE ARMY**  
U.S. ARMY ENGINEER DISTRICT, SACRAMENTO  
CORPS OF ENGINEERS  
1325 J STREET  
SACRAMENTO, CALIFORNIA, 95814-2922

CESPK-PD-R (1102-2-1150a)

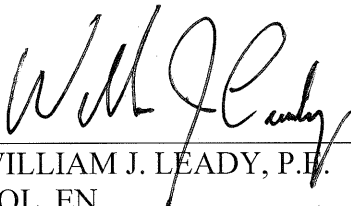
JAN 23 2013

MEMORANDUM FOR U.S. Army Records Management and Declassification Agency, Army Federal Register Liaison (AHRC-PDD-RP/Ms. Bowen), 7701 Telegraph Road, Casey Building Room 102, Alexandria, VA 22315-3860

SUBJECT: Notice of Intent to Prepare an Environmental Impact Statement for the Sacramento-San Joaquin Delta Islands and Levees Feasibility Study

1. Enclosed are three copies of our Notice of Intent (NOI) to prepare the Environmental Impact Statement for the Sacramento-San Joaquin Delta Islands and Levees Feasibility Study. Please place the NOI in the Federal Register at the earliest possible time.

Encl

  
WILLIAM J. LEADY, P.E.  
COL, EN  
Commanding

CF: Commander, U.S. Army Corps of Engineers, South Pacific Division, 333 Market Street, San Francisco, CA 94105 (w/encl)

**BILLING CODE: 3720-58**

**DEPARTMENT OF DEFENSE**

**Department of the Army; Army Corps of Engineers**

**Notice of Intent to Prepare an Environmental Impact Statement for the  
Sacramento-San Joaquin Delta Islands and Levees Feasibility Study**

**AGENCY:** Department of the Army, U.S. Army Corps of Engineers; DoD.

**ACTION:** Notice of intent.

**SUMMARY:** The action being taken is the preparation of an environmental impact statement (EIS) for the Sacramento-San Joaquin Delta Islands and Levees Feasibility Study (Delta Study). The EIS will be prepared in accordance with the National Environmental Policy Act (NEPA). The U.S. Army Corps of Engineers (Corps) will serve as lead agency for compliance with NEPA. The Delta Study will evaluate alternatives to meet the study goals of restoring sustainable ecosystem functions and improving flood risk management in the Delta, Suisun Marsh, and adjacent areas.

**DATES:** Written comments regarding the scope of the environmental analysis should be received at (see **ADDRESSES**) by March 15, 2013.

**ADDRESSES:** Written comments concerning this study and requests to be included on the Delta Study mailing list should be submitted to U.S. Army Corps of Engineers, Sacramento District, Public Affairs Office, Attn: Delta Study Scoping, 1325 J Street, Sacramento, CA 95814.

**FOR FURTHER INFORMATION CONTACT:** The U.S. Army Corps of Engineers Public Affairs Office via telephone at (916) 557-7461, e-mail at [spk-pao@usace.army.mil](mailto:spk-pao@usace.army.mil), or regular mail at (see **ADDRESSES**).

**SUPPLEMENTARY INFORMATION:**

**1. Proposed Action.** The Corps is preparing an EIS to analyze the environmental effects associated with various alternatives for restoring sustainable ecosystem functions and improving flood risk management in the Delta, Suisun Marsh, and adjacent areas.

**2. Alternatives.** The EIS will evaluate alternatives for achieving the purpose and need of the proposed action. To be developed through the Corps plan formulation process, the alternatives analyzed may include various combinations of ecosystem restoration and flood risk management measures designed to meet the dual objectives of restored ecosystem functions and improved flood risk management. The array of potential measures and possible combinations into alternatives will be determined based in part on information received during the scoping process.

- **3. Scoping Process.** *a.* Two public scoping meetings will be held to present an overview of the Delta Study and the EIS process, and to afford all interested parties with an opportunity to provide comments regarding the scope of analysis and potential alternatives. The first public scoping meeting will be held at the Old Sugar Mill, 35265 Willow Ave, Clarksburg, California, on February 19, 2013, from 5:00 – 7:00 p.m. The study presentation is scheduled to begin at 5:30. The second public scoping meeting will be held at the Sheraton Grand Sacramento, 1230 J Street, Sacramento, California, on

February 20, 2013, from 2:00 – 4:00 p.m. The study presentation is scheduled to begin at 2:30.

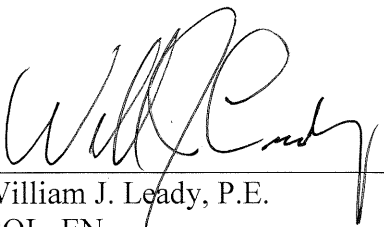
*b.* Potentially significant issues to be analyzed in the EIS include programmatic, project specific, and cumulative effects on aesthetics, agricultural resources, air quality, biological resources, cultural resources, geology and soils, hazards and hazardous materials, hydrology and water quality, land use and planning, noise, population and housing, public services, recreation, transportation and traffic, and utilities and service systems.

*c.* The Corps will consult with the State Historic Preservation Officer to comply with the National Historic Preservation Act of 1966, as amended and with the U.S. Fish and Wildlife Service and National Marine Fisheries Service to comply with the Endangered Species Act (16 USC § 1536). The Corps will also coordinate with the U.S. Fish and Wildlife Service to comply with the Fish and Wildlife Coordination Act (16 U.S.C. sec 661). Other resource agencies will be consulted with as applicable.

*d.* A 45-day public review period will be provided for all interested parties, individuals, and agencies to review and comment on the draft EIS. All interested parties are encouraged to respond to this notice and provide a current address if they wish to be notified of the draft EIS circulation.

**4. Availability.** The draft EIS is currently scheduled to be available for public review and comment in early 2014.

23 Jan 2013  
Date:

  
\_\_\_\_\_  
William J. Leady, P.E.  
COL, EN  
Commanding

- Testimony from representatives of the military criminal investigation organizations.

- Testimony from subject matter experts on the military justice system.

- Receipt of public comments—3:00 p.m. to 4:00 p.m.

**Availability of Materials for the Meeting:** A copy of the agenda for the February 15, 2013 meeting and the tasking for the Subcommittee may be obtained at the meeting or from the Board's Staff Director at [StaffDirectorDefenseLegalPolicyBoard@osd.mil](mailto:StaffDirectorDefenseLegalPolicyBoard@osd.mil).

**Public's Accessibility to the Meeting:** Pursuant to 5 U.S.C. 552b and 41 CFR 102–3.140 through 102–3.165, and the availability of space, part of this meeting is open to the public. Seating is limited and is on a first-come basis.

**Special Accommodations:** Individuals requiring special accommodations to access the public meeting should contact the Staff Director at [StaffDirectorDefenseLegalPolicyBoard@osd.mil](mailto:StaffDirectorDefenseLegalPolicyBoard@osd.mil) at least five (5) business days prior to the meeting so that appropriate arrangements can be made.

**Procedures for Providing Public Comments:** Pursuant to 41 CFR 102–3.105(j) and 102–3.140, and section 10(a)(3) of the Federal Advisory Committee Act of 1972, the public or interested organizations may submit written comments to the Board about its mission and topics pertaining to this public session. Written comments must be received by the Designated Federal Officer at least five (5) business days prior to the meeting date so that the comments may be made available to the Board for their consideration prior to the meeting. Written comments should be submitted via email to the address for the Designated Federal Officer in **FOR FURTHER INFORMATION CONTACT** in the following formats: Adobe Acrobat, WordPerfect, or Microsoft Word. Please note that since the Board operates under the provisions of the Federal Advisory Committee Act, as amended, all written comments will be treated as public documents and will be made available for public inspection. If members of the public are interested in making an oral statement, a written statement must be submitted as above along with a request to provide an oral statement. After reviewing the written comments, the Chairperson and the Designated Federal Officer will determine who of the requesting persons will be able to make an oral presentation of their issue during the open portion of this meeting. Determination of who will be making an oral presentation is at the sole discretion of the Committee Chair and the Designated Federal Officer and will

depend on time available and relevance to the Committee's activities. Five minutes will be allotted to persons desiring to make an oral presentation. Oral presentations by members of the public will be permitted from 3:00 p.m. to 4:00 p.m. in front of the Board. The number of oral presentations to be made will depend on the number of requests received from members of the public.

**Committee's Designated Federal Officer:** The Board's Designated Federal Officer is Mr. James Schwenk, Defense Legal Policy Board, PO Box 3656, Arlington, VA 22203. Email: [defenselegalpolicyboarddfo@osd.mil](mailto:defenselegalpolicyboarddfo@osd.mil). Phone: (703) 697–9343. For meeting information please contact Mr. David Gruber, Defense Legal Policy Board, PO Box 3656, Arlington, VA 22203. Email: [StaffDirectorDefenseLegalPolicyBoard@osd.mil](mailto:StaffDirectorDefenseLegalPolicyBoard@osd.mil). Phone: (703) 696–5449.

Dated: January 25, 2013.

**Aaron Siegel,**

*Alternate OSD Federal Register Liaison Officer, Department of Defense.*

[FR Doc. 2013–02033 Filed 1–30–13; 8:45 am]

**BILLING CODE 5001–06–P**

## DEPARTMENT OF DEFENSE

### Department of the Army

#### **Notice of Availability for Exclusive, Non-Exclusive, or Partially-Exclusive Licensing of an Invention Concerning Antibodies With Simultaneous Subsite Specificities to Protein and Lipid Epitopes**

**AGENCY:** Department of the Army, DoD.

**ACTION:** Notice.

**SUMMARY:** Announcement is made of the availability for licensing of the invention set forth in U.S. Patent Application Serial No. 11/525,574, entitled “Antibodies with Simultaneous Subsite Specificities to Protein and Lipid Epitopes,” filed on September 22, 2006. The United States Government as represented by the Secretary of the Army has rights to this invention. Foreign rights may be available.

**ADDRESSES:** Commander, U.S. Army Medical Research and Materiel Command, ATTN: Command Judge Advocate, MCMR–JA, 504 Scott Street, Fort Detrick, Frederick, MD 21702–5012.

**FOR FURTHER INFORMATION CONTACT:** For patent issues, Ms. Elizabeth Arwine, Patent Attorney, (301) 619–7808. For licensing issues, Dr. Paul Mele, Office of Research and Technology Applications (ORTA), (301) 619–6664, both at telefax (301) 619–5034.

**SUPPLEMENTARY INFORMATION:** The invention relates to a method of making antibodies that are dual specific to both (1) amino acid sequences and (2) solid phase lipid structures. The invention has relevance to such important subject matter as making broadly neutralizing monoclonal antibodies to HIV–1.

**Brenda S. Bowen,**

*Army Federal Register Liaison Officer.*

[FR Doc. 2013–02097 Filed 1–30–13; 8:45 am]

**BILLING CODE 3710–08–P**

## DEPARTMENT OF DEFENSE

### Department of the Army; Army Corps of Engineers

#### **Notice of Intent to Prepare an Environmental Impact Statement for the Sacramento-San Joaquin Delta Islands and Levees Feasibility Study**

**AGENCY:** Department of the Army, U.S. Army Corps of Engineers; DoD.

**ACTION:** Notice of intent.

**SUMMARY:** The action being taken is the preparation of an environmental impact statement (EIS) for the Sacramento-San Joaquin Delta Islands and Levees Feasibility Study (Delta Study). The EIS will be prepared in accordance with the National Environmental Policy Act (NEPA). The U.S. Army Corps of Engineers (Corps) will serve as lead agency for compliance with NEPA. The Delta Study will evaluate alternatives to meet the study goals of restoring sustainable ecosystem functions and improving flood risk management in the Delta, Suisun Marsh, and adjacent areas.

**DATES:** Written comments regarding the scope of the environmental analysis should be received at (see **ADDRESSES**) by March 15, 2013.

**ADDRESSES:** Written comments concerning this study and requests to be included on the Delta Study mailing list should be submitted to U.S. Army Corps of Engineers, Sacramento District, Public Affairs Office, Attn: Delta Study Scoping, 1325 J Street, Sacramento, CA 95814.

**FOR FURTHER INFORMATION CONTACT:** The U.S. Army Corps of Engineers Public Affairs Office via telephone at (916) 557–7461, email at [spk-pao@usace.army.mil](mailto:spk-pao@usace.army.mil), or regular mail at (see **ADDRESSES**).

#### **SUPPLEMENTARY INFORMATION:**

1. *Proposed Action.* The Corps is preparing an EIS to analyze the environmental impacts associated with alternatives for restoring sustainable ecosystem functions and improving

flood risk management in the Delta, Suisun Marsh, and adjacent areas.

2. *Alternatives.* The EIS will evaluate alternatives for achieving the purpose and need of the proposed action. To be developed through the Corps plan formulation process, the alternatives analyzed may include various combinations of ecosystem restoration and flood risk management measures designed to meet the dual objectives of restored ecosystem functions and improved flood risk management. The array of potential measures and possible combinations into alternatives will be determined based in part on information received during the scoping process.

3. *Scoping Process.* a. Two public scoping meetings will be held to present an overview of the Delta Study and the EIS process, and to afford all interested parties with an opportunity to provide comments regarding the scope of analysis and potential alternatives. The first public scoping meeting will be held at the Old Sugar Mill 35265 Willow Ave, Clarksburg, California, on February 19, 2013, from 5:00–7:00 p.m. The study presentation is scheduled to begin at 5:30. The second public scoping meeting will be held at the Sheraton Grand Sacramento, 1230 J Street, Sacramento, California, on February 20, 2013, from 2:00–4:00 p.m. The study presentation is scheduled to begin at 2:30.

b. Potentially significant issues to be analyzed in the EIS include programmatic, project specific, and cumulative effects on aesthetics, agricultural resources, air quality, biological resources, cultural resources, geology and soils, hazards and hazardous materials, hydrology and water quality, land use and planning, noise, population and housing, public services, recreation, transportation and traffic, and utilities and service systems.

c. The Corps will consult with the State Historic Preservation Officer to comply with the National Historic Preservation Act of 1966, as amended and with the U.S. Fish and Wildlife Service and National Marine Fisheries Service to comply with the Endangered Species Act (16 U.S.C. 1536). The Corps will also coordinate with the U.S. Fish and Wildlife Service to comply with the Fish and Wildlife Coordination Act (16 U.S.C. sec 661). Other resource agencies will be consulted with as applicable.

d. A 45-day public review period will be provided for all interested parties individuals and agencies to review and comment on the draft EIS. All interested parties are encouraged to respond to this notice and provide a current address if they wish to be notified of the draft EIS circulation.

4. *Availability.* The draft EIS is currently scheduled to be available for public review and comment in early 2014.

Dated: January 23, 2013.

**William J. Leady,**

*Professional Engineer, Colonel, U.S. Army, Commanding.*

[FR Doc. 2013–02095 Filed 1–30–13; 8:45 am]

**BILLING CODE 3720–58–P**

## DEPARTMENT OF ENERGY

### Federal Energy Regulatory Commission

#### Combined Notice of Filings #1

Take notice that the Commission received the following electric corporate filings:

*Docket Numbers:* EC13–67–000.

*Applicants:* Wildcat Wind Farm I, LLC.

*Description:* Application For Authorization Under Section 203 Of The Federal Power Act, Requests For Waivers Of Filing Requirements, Expedited Review and Confidential Treatment Wildcat Wind Farm I, LLC.

*Filed Date:* 1/22/13.

*Accession Number:* 20130122–5357.

*Comments Due:* 5 p.m. ET 2/12/13.

Take notice that the Commission received the following electric rate filings:

*Docket Numbers:* ER10–2331–016; ER10–2343–016; ER10–2319–015; ER10–2320–015; ER10–2317–014; ER10–2322–016; ER10–2324–015 ER10–2325–014; ER10–2332–015; ER10–2326–016; ER10–2327–017; ER10–2328–015; ER11–4609–014; ER10–2330–016.

*Applicants:* J.P. Morgan Ventures Energy Corporation, J.P. Morgan Commodities Canada Corporation, BE Alabama LLC, BE Allegheny LLC, BE CA LLC, BE Ironwood LLC, BE KJ LLC, BE Louisiana LLC, BE Rayle LLC, Cedar Brakes I, L.L.C., Cedar Brakes II, L.L.C., Central Power & Lime LLC, Triton Power Michigan LLC, Utility Contract Funding, L.L.C.

*Description:* J.P. Morgan Sellers submits Notice of Non-Material Change in Status re Prairie Rose Wind.

*Filed Date:* 1/22/13.

*Accession Number:* 20130122–5380.

*Comments Due:* 5 p.m. ET 2/12/13.

*Docket Numbers:* ER10–2405–003; ER10–2414–003; ER10–2427–001.

*Applicants:* High Prairie Wind Farm II, LLC, Old Trail Wind Farm, LLC, Telocaset Wind Power Partners, LLC.

*Description:* Notice of Non-Material Change in Status of High Prairie Wind Farm II, LLC, et al.

*Filed Date:* 1/22/13.

*Accession Number:* 20130122–5355.

*Comments Due:* 5 p.m. ET 2/12/13.

*Docket Numbers:* ER10–2609–003;

ER10–2604–001; ER10–2603–001;

ER10–2602–003; ER10–2606–003.

*Applicants:* Escanaba Paper Company, Luke Paper Company, Rumford Paper Company, New Page Energy Services, Inc., Consolidated Water Power Company.

*Description:* Notice of Non-Material Change in Status of NewPage MBR Companies.

*Filed Date:* 1/22/13.

*Accession Number:* 20130122–5374.

*Comments Due:* 5 p.m. ET 2/12/13.

*Docket Numbers:* ER10–2763–006;

ER10–2732–006; ER10–2733–006;

ER10–2734–006; ER10–2736–006;

ER10–2737–006; ER10–2741–006;

ER10–2749–006; ER10–2752–006;

ER12–2492–002; ER12–2493–002;

ER12–2494–002; ER12–2495–002;

ER12–2496–002.

*Applicants:* Bangor Hydro Electric Company, Emera Energy U.S. Subsidiary No. 1, Inc, Emera Energy U.S. Subsidiary No. 2, Inc., Emera Energy Services Subsidiary No. 1 LLC, Emera Energy Services Subsidiary No. 2 LLC, Emera Energy Services Subsidiary No. 3 LLC, Emera Energy Services Subsidiary No. 4 LLC, Emera Energy Services Subsidiary No. 5 LLC, Emera Energy Services Subsidiary No. 6 LLC, Emera Energy Services Subsidiary No. 7 LLC, Emera Energy Services Subsidiary No. 8 LLC, Emera Energy Services Subsidiary No. 9 LLC, Emera Energy Services Subsidiary No. 10, Emera Energy Services, Inc.

*Description:* Notice of Change in Status of Bangor Hydro Electric Company, et al.

*Filed Date:* 1/22/13.

*Accession Number:* 20130122–5373.

*Comments Due:* 5 p.m. ET 2/12/13.

*Docket Numbers:* ER11–3342–001.

*Applicants:* Dynasty Power Inc..

*Description:* Notice of Change in Status of Dynasty Power Inc.

*Filed Date:* 1/22/13.

*Accession Number:* 20130122–5368.

*Comments Due:* 5 p.m. ET 2/12/13.

*Docket Numbers:* ER11–4266–004.

*Applicants:* Richland-Stryker Generation LLC.

*Description:* Notice of Non-Material Change in Status of Richland-Stryker Generation LLC.

*Filed Date:* 1/22/13.

*Accession Number:* 20130122–5381.

*Comments Due:* 5 p.m. ET 2/12/13.

*Docket Numbers:* ER12–1653–002.

*Applicants:* New York Independent System Operator, Inc.

*Description:* New York Independent System Operator, Inc. submits NYISO

# Sacramento-San Joaquin Delta Islands & Levees Feasibility Study

---



U.S. Army Corps of Engineers  
Public Affairs Office  
1325 J Street, Room 1513  
Sacramento, CA 95814

*The U.S. Army Corps of Engineers invites you to attend our public scoping meetings  
for the Sacramento-San Joaquin Delta Islands and Levees Feasibility Study*

**Tuesday, Feb. 19, 2013**

**5 – 7 p.m.**

**Old Sugar Mill**

**35265 Willow Ave, Clarksburg, CA**



**Wednesday, Feb. 20, 2013**

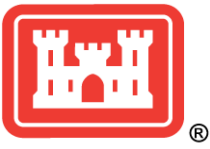
**2 – 4 p.m.**

**Sheraton Grand Sacramento**

**1230 J St, Sacramento, CA**

The public scoping meetings will provide an update on the Sacramento-San Joaquin Delta Islands and Levees Feasibility Study, and the opportunity to speak with representatives from the U.S. Army Corps of Engineers.

Please call the U.S. Army Corps of Engineers at (916) 557-5100 for more information.



# NEWS RELEASE

U.S. ARMY CORPS OF ENGINEERS

BUILDING STRONG®

Release # 2013-S-003  
For Immediate Release:  
Feb. 6, 2013

Contact: Tyler Stalker  
916-557-5107  
[Tyler.M.Stalker@usace.army.mil](mailto:Tyler.M.Stalker@usace.army.mil)

## Corps to discuss Delta Islands and Levees Feasibility Study at public meetings

**SACRAMENTO, Calif.** – The U.S. Army Corps of Engineers Sacramento District is set to host two public meetings this month on its ongoing Delta Islands and Levees Feasibility Study, a cost-shared study with the state of California to address critical water resources issues in the Sacramento-San Joaquin Delta.

The public meetings, scheduled for Feb. 19 at the Old Sugar Mill in Clarksburg and Feb. 20 at the Sheraton Grand Hotel in Sacramento, are intended to provide a public forum to explain the Corps' feasibility study process and what the Delta Islands and Levees Feasibility Study aims to achieve.

The Delta Islands and Levees Feasibility Study will inform the Corps' and state of California's efforts to address a variety of critical issues in the Delta, including flood risk management, ecosystem restoration, water quality, water supply conveyance, emergency flood water storage and, emergency response.

The draft environmental impact statement outlining the potential impacts of proposed solutions is scheduled to be available for public review and comment in 2014. The array of potential measures and program alternatives will be determined based on information received during the scoping process and other associated studies.

In addition to providing comments at the public scoping meetings, written comments can be submitted by mail to 1325 J Street, Sacramento, CA, 95814 or by e-mail to [spk-pao@usace.army.mil](mailto:spk-pao@usace.army.mil). Additional public comment periods and public meetings will be conducted throughout the course of the study as part of the environmental impact statement development process.

The Corps and its local partner, California Department of Water Resources, plan to attend local government, state agency and other Delta-related meetings through the year to engage affected stakeholders and keep the public apprised of progress on the study.

## Delta Islands and Levees Feasibility Study Public Meetings

### Feb. 19, 2013

5 p.m. - 7 p.m. (presentation at 5:30 p.m.)  
Old Sugar Mill  
35265 Willow Avenue, Clarksburg, CA

### Feb. 20, 2013

2 p.m. - 4 p.m. (presentation at 2:30 p.m.)  
Sheraton Grand Hotel  
1230 J Street, Sacramento, CA

###

---

U.S. ARMY CORPS OF ENGINEERS – SACRAMENTO DISTRICT

1325 J ST. – SACRAMENTO, CA 95814

[www.spk.usace.army.mil](http://www.spk.usace.army.mil)

[www.facebook.com/sacramentodistrict](https://www.facebook.com/sacramentodistrict)

[www.youtube.com/sacramentodistrict](https://www.youtube.com/sacramentodistrict)

[www.twitter.com/USACEsacramento](https://www.twitter.com/USACEsacramento)

<http://www.flickr.com/photos/sacramentodistrict/>

**From:** Johnson, Bradley C SPK

**To:** [Delta News SPK](#)

**Bcc:** ["abmoran@sprynet.com"](#); ["admin@hultgrentillis.com"](#); ["aestrada@water.ca.gov"](#); ["agehlot@ghglobaltech.net"](#); ["aholmes@dfg.ca.gov"](#); ["aholmes@dfg.ca.gov"](#); ["ajenkins@solanocounty.com"](#); ["Paniccia, AI SPN"](#); ["alice@aarichandassociates.com"](#); ["Kirchner, Alicia E SPK"](#); ["alobato@water.ca.gov"](#); ["ALRuffin@SolanoCounty.com"](#); ["ameen\\_khan@boxer.senate.gov"](#); ["anavaser@water.ca.gov"](#); ["Sturm, Anne K SPD"](#); ["anne.sanger@mail.house.gov"](#); ["apawley@water.ca.gov"](#); ["Raymundo, Arianna F TAN"](#); ["Rakstins, Arijis A SPN"](#); ["arroyorj@aol.com"](#); ["asimpson@water.ca.gov"](#); ["astrachan@dfg.ca.gov"](#); ["awconsult@aol.com"](#); ["bachman@mbkengineers.com"](#); ["bagreer@mbakercorp.com"](#); ["bapowell@solanocounty.com"](#); ["Barb.Johnson@mail.house.gov"](#); ["bcampbel@ebmud.com"](#); ["bemis@amarine.com"](#); ["betchart@earthlink.net"](#); ["beth.jines@LACity.org"](#); ["bevoy@waterboards.ca.gov"](#); ["bfinlays@ospr.dfg.ca.gov"](#); ["bgeisler@anchorenv.com"](#); ["bill.bamatte@calema.gov"](#); ["Bill.Martin@yolocounty.org"](#); ["bimid@sbcglobal.net"](#); ["bkelly@mercedid.org"](#); ["Jackson, Blair T SPN"](#); ["bobfcollins@hotmail.com"](#); ["bobker@bay.org"](#); ["Boothg@saccounty.net"](#); ["boothg@saccounty.net"](#); ["borcutt@dfg.ca.gov"](#); ["borcutt@dfg.ca.gov"](#); ["boregan@pbieng.com"](#); ["bpbrock@water.ca.gov"](#); ["BPCstaff@bayplanningcoalition.org"](#); ["bradley@water.ca.gov"](#); ["Beach, Brandon A SPN"](#); ["Muncy, Brandon C SPK"](#); ["Mulvey, Brian M SPK"](#); ["Schlenker, Brooke E SPK"](#); ["bruce.irion@shell.com"](#); ["bruce@sfei.org"](#); ["bsetness@ksninc.com"](#); ["burkhard@water.ca.gov"](#); ["Cabrera-Stagno, Valentina@epamail.epa.gov"](#); ["cal.fong@comcast.net"](#); ["campopiano.jorine@epa.gov"](#); ["Routh, Carmen L SPK"](#); ["Mallory, Carolyn E SPK"](#); ["Young, Casey C SPK"](#); ["Casio@mbkengineers.com"](#); ["cbg@shanwil.com"](#); ["Cboye@so.cccounty.us"](#); ["ccady@cdfa.ca.gov"](#); ["chaerr@water.ca.gov"](#); ["Gray-Garcia, Chris SPK"](#); ["chris.howard@dcd.cccounty.us"](#); ["chris.kitting@csueastbay.edu"](#); ["Altendorf, Christine HQ"](#); ["christine@boudreaulc.com"](#); ["Tejeda, Cindy L SPD"](#); ["cindy.tuttle@yolocounty.org"](#); ["cjmartin@water.ca.gov"](#); ["CJoab@waterboards.ca.gov"](#); ["ckao@valleywater.org"](#); ["Turner, Claire Marie SPK"](#); ["clarkp@water.ca.gov"](#); ["cmanc2@aol.com"](#); ["cmuehlberg@usbr.gov"](#); ["cneudeck@ksninc.com"](#); ["colcope@hotmail.com"](#); ["commodorewells@msn.com"](#); ["Koger, Cory S SPK"](#); ["cosio@mbkengineers.com"](#); ["Craig.Moyle@us.mwhglobal.com"](#); ["Conner, Craig S SPN"](#); ["craig@cdstevens.com"](#); ["cschmutte@mwdh2o.com"](#); ["cwilliam@water.ca.gov"](#); ["dalehf@water.ca.gov"](#); ["Dan.Davis@WestonSolutions.com"](#); ["dan.ray@deltacouncil.ca.gov"](#); ["Artho, Daniel F SPK"](#); ["daniel@kaydix.com"](#); ["David.P.VanRijn@usace.army.mil"](#); ["Patterson, David R SPN"](#); ["David.Wegner@mail.house.gov"](#); ["davidnesmith@ewc.com"](#); ["dcasey@photoscience.com"](#); ["dccengineering@citlink.net"](#); ["dceppos@ccp.csus.edu"](#); ["ddadamo@earthlink.net"](#); ["ddjcs@att.net"](#); ["debbie@ejcw.org"](#); ["Cordell, DeDe SPK"](#); ["deedee.antypas@ci.stockton.ca.us"](#); ["deltakeep@aol.com"](#); ["Clark, Dennis G SPK"](#); ["dfeliz@dfg.ca.gov"](#); ["dforkel@deltawetlands.com"](#); ["dfullerton@mwdh2o.com"](#); ["dguinto@hydroplanllc.com"](#); ["DLL-CESPK-PD"](#); ["dmajors@mwdh2o.com"](#); ["dmraz@water.ca.gov"](#); ["docterre@sonic.net"](#); ["dornl@sacsewer.com"](#); ["dosugi@water.ca.gov"](#); ["douglas\\_weinrich@fws.gov"](#); ["dpeixotto@marstel-day.com"](#); ["Clark, E Scott SPK"](#); ["ebalsley@mbakercorp.com"](#); ["echapman@swc.org"](#); ["echristian@waterboards.ca.gov"](#); ["Townesley, Edwin S SPD"](#); ["Ehaga@usbr.gov"](#); ["elizabeth@water.ca.gov"](#); ["ellen\\_johnck@yahoo.com"](#); ["Elly.Fairclough@mail.house.gov"](#); ["emobley@mbakercorp.com"](#); ["emobley@mbakercorp.com"](#); ["enas@water.ca.gov"](#); ["Nagy, Eric E SPK"](#); ["eric.nichol@deltacouncil.ca.gov"](#); ["escooke@pbsj.com"](#); ["Maak, Eugene C SPK"](#); ["ewc@davidnesmith.com"](#); ["Tabatabai, Fari SPN"](#); ["fordc@saccounty.net"](#); ["Foresman.Erin@epamail.epa.gov"](#); ["GaryF@cityofwestsacramento.org"](#); ["gbardini@water.ca.gov"](#); ["gfredlee33@gmail.com"](#); ["ggartrell@ccwater.com"](#); ["Mitchell, Glen L SPN"](#); ["Mitchell, Glen L SPN"](#); ["gnewton@water.ca.gov"](#); ["goldfishj@gmail.com"](#); ["Gpitzer@watereducation.org"](#); ["Greg\\_Yarris@FWS.gov"](#); ["Gregor.Blackburn@dhs.gov"](#); ["Kukas, Gregory A SPK"](#); ["gshaw@water.ca.gov"](#); ["harder@water.ca.gov"](#); ["harry\\_kahler@fws.gov"](#); ["hartrestoration@mac.com"](#); ["hastings@calwater.ca.gov"](#); ["hershey@mbkengineers.com"](#); ["hershey@mbkengineers.com"](#); ["Applegate, Hilary E SPK"](#); ["hjchen@waterboards.ca.gov"](#); ["HuitC@slc.ca.gov"](#); ["HuntsmanSR@BV.com"](#); ["incer@saccounty.net"](#); ["irivera@waterboards.ca.gov"](#); ["Jafar.Faghih@hdrinc.com"](#); ["Powers, James C SPK"](#); ["James.S.Miller@usace.army.mil"](#); ["Jamil.S.Ibrahim@us.mwhglobal.com"](#); ["Jason\\_Albritton@epw.senate.gov"](#); ["jburnam@anchorenv.com"](#); ["jdolan@sbcglobal.net"](#); ["jdudas@water.ca.gov"](#); ["Hollis, Jeremy I SPK"](#); ["Fuentes, Jerry W SPK"](#); ["Jessica.L.BurtonEvans@usace.army.mil"](#); ["jewaters@pacbell.net"](#); ["jfiles@clearwire.net"](#); ["jfredrickson@cufb.com"](#); ["jgoldber@water.ca.gov"](#); ["jharmsstrong@solanocounty.com"](#); ["Jherlaw@aol.com"](#); ["jhogan@water.ca.gov"](#); ["jim.brown@calema.ca.gov"](#); ["Jim.Chapman@ca.usda.gov"](#); ["jim.giottonini@ci.stockton.ca.us"](#); ["jim.vogel@aecom.com"](#); ["jim@cmanc.com"](#); ["jkaspar@stocktonport.com"](#); ["jlehane@mbakercorp.com"](#); ["jmaguire@sjgov.org"](#); ["jmalone@anchorenv.com"](#); ["jmargowski@starstream.net"](#); ["jmeek@jmeek.com"](#); ["Joe\\_Silveira@fws.gov"](#); ["Hardesty, John D SPN"](#); ["John.Greitzer@dcd.cccounty.us"](#); ["john.huie@doit.cccounty.us"](#); ["Baker, John LTC SPN"](#); ["john.mcmillan@shawgrp.com"](#); ["john@bayplanningcoalition.org"](#); ["JohnP@cityofwestsacramento.org"](#); ["Axt, Josephine R SPL"](#); ["JPORCO@mbakercorp.com"](#); ["jporco@mbakercorp.com"](#); ["jpunia@water.ca.gov"](#); ["jsidhu@mbakercorp.com"](#); ["jspaletta@herumcrabtree.com"](#); ["jtischer@csufresno.edu"](#); ["jtokheim@ksninc.com"](#); ["Sheen, Judy P SPN"](#); ["julie.ogilvie@edaw.com"](#); ["jwilusz@water.ca.gov"](#); ["jwingfield@stocktonport.com"](#); ["jwright@water.ca.gov"](#); ["Rippey, Karen E SPN"](#); ["Berresford, Karen G SPD"](#); ["karenmedders@gmail.com"](#); ["Lee, Karin SPK"](#); ["Dadey, Kathleen A SPK"](#); ["KathleenV@abag.ca.gov"](#); ["Kathy.Hoffman@mail.house.gov"](#); ["Stock, Keley D SPK"](#); ["Ken.Bobinski@calema.ca.gov"](#); ["kenning@saccounty.net"](#); ["kfucciol@water.ca.gov"](#); ["kickinbach@gmail.com"](#); ["Carsell, Kimberly M SPK"](#); ["Kkelly@water.ca.gov"](#); ["kmdavis@deltaconservancy.ca.gov"](#); ["KniLves@SolanoCounty.com"](#); ["kpatterson@sjfb.org"](#); ["krbarnes-jones@solanocounty.com"](#); ["Bell, Krystal L SPK"](#); ["kschimke@water.ca.gov"](#); ["ktrott@cdfa.ca.gov"](#); ["kuenster@water.ca.gov"](#); ["Keilman, Kurt SPD"](#); ["kyle.noderer@yolocounty.org"](#); ["Kyle.Winslow@CH2M.com"](#); ["laurak@swc.org"](#); ["Nemetz, Lawrence D SPK"](#); ["lblake@ksninc.com"](#); ["lchew@water.ca.gov"](#); ["ldouglas@waterboards.ca.gov"](#); ["lh@marstel-day.com"](#); ["Linda.fiack@delta.ca.gov"](#); ["Holm, Linda M SPN"](#); ["lindaheffelfinger@att.net"](#); ["Lisa.Mantarro@mail.house.gov"](#); ["lking@water.ca.gov"](#); ["liiu@water.ca.gov"](#); ["loleary@kleinfelder.com"](#); ["lorloff@ccwater.com"](#); ["lpeters@water.ca.gov"](#); ["Lynn\\_Abramson@boxer.senate.gov"](#); ["marci.coglianesecomcast.net"](#); ["maria.rea@noaa.gov"](#); ["marianne@water.ca.gov"](#); ["Bierman, Mark D SPN"](#); ["marshall@water.ca.gov"](#); ["martinezrick@saco.es.org"](#); ["Evoy-Mount, Matilda L SPK"](#); ["mbishop@mbakercorp.com"](#); ["mconnelly@sjgov.org"](#); ["mcowin@water.ca.gov"](#); ["Nagy, Meegan G SPK"](#); ["meg@sfei.org"](#); ["melinda@cvflood.org"](#);

[memami@water.ca.gov](mailto:memami@water.ca.gov)"; [mfloyd@water.ca.gov](mailto:mfloyd@water.ca.gov)"; [mhoshovs@water.ca.gov](mailto:mhoshovs@water.ca.gov)"; [Ramsbotham, Michael SPK](mailto:Ramsbotham.Michael@SPK);  
[Nepstad, Michael G SPK](mailto:Nepstad.Michael.G@SPK); [Michael.Hendrick@noaa.gov](mailto:Michael.Hendrick@noaa.gov)"; [Dietl, Michael L SPK](mailto:Dietl.Michael.L@SPK); [Jewell, Michael S SPK](mailto:Jewell.Michael.S@SPK);  
[Michael.hoover@fws.gov](mailto:Michael.hoover@fws.gov)"; [mikemi@water.ca.gov](mailto:mikemi@water.ca.gov)"; [Fujitsu, Miki SPK](mailto:Fujitsu.Miki@SPK); [MInde@so.co.contra-coste.ca.us](mailto:MInde@so.co.contra-coste.ca.us)";  
[mjatty@sbcglobal.net](mailto:mjatty@sbcglobal.net)"; [MKaltreider@solanocounty.com](mailto:MKaltreider@solanocounty.com)"; [mkoller@water.ca.gov](mailto:mkoller@water.ca.gov)"; [mmierzwa@water.ca.gov](mailto:mmierzwa@water.ca.gov)";  
[mmiller@water.ca.gov](mailto:mmiller@water.ca.gov)"; [MNeuvert@yolocounty.org](mailto:MNeuvert@yolocounty.org)"; [mobrien@erscorp.us](mailto:mobrien@erscorp.us)"; [mohagan@HNTB.com](mailto:mohagan@HNTB.com)";  
[moncrief@mbkengineers.com](mailto:moncrief@mbkengineers.com)"; [MPHILIPP@dfg.ca.gov](mailto:MPHILIPP@dfg.ca.gov)"; [mreeve@water.ca.gov](mailto:mreeve@water.ca.gov)"; [mrldgway@water.ca.gov](mailto:mrldgway@water.ca.gov);  
[MSchaefer@esassoc.com](mailto:MSchaefer@esassoc.com)"; [mstevenson@ycfcwcd.org](mailto:mstevenson@ycfcwcd.org); Ferris, Nancy M SPN;  
[nathan.dietrich@mail.house.gov](mailto:nathan.dietrich@mail.house.gov); Hedgecock, Neil SPN; [nekane@water.ca.gov](mailto:nekane@water.ca.gov)"; [nelsonn@water.ca.gov](mailto:nelsonn@water.ca.gov);  
[nestoll@sjgov.org](mailto:nestoll@sjgov.org)"; [nfinch@water.ca.gov](mailto:nfinch@water.ca.gov)"; [nicholas.greene.ios.doi@gmail.com](mailto:nicholas.greene.ios.doi@gmail.com);  
[Nicole.Alioto@mail.house.gov](mailto:Nicole.Alioto@mail.house.gov)"; [nicole.woodward@westonsolutions.com](mailto:nicole.woodward@westonsolutions.com)"; [Njennings@cityofsacramento.org](mailto:Njennings@cityofsacramento.org);  
[northworks@mindspring.com](mailto:northworks@mindspring.com)"; [ntomlinson@sjgov.org](mailto:ntomlinson@sjgov.org)"; [oetzeld@slc.ca.gov](mailto:oetzeld@slc.ca.gov); Sarmiento, Ofelia P SPK;  
[Caldwell, Paige SPK](mailto:Caldwell.Paige@SPK); [patricia.port@ios.doi.gov](mailto:patricia.port@ios.doi.gov)"; [Patricia Port@ios.doi.gov](mailto:Patricia.Port@ios.doi.gov);  
[Paul.J.Robershotte@usace.army.mil](mailto:Paul.J.Robershotte@usace.army.mil)"; Ziano, Paul V SPK; [pcreedon@waterboards.ca.gov](mailto:pcreedon@waterboards.ca.gov);  
[pdetj@pw.cccounty.us](mailto:pdetj@pw.cccounty.us)"; [pesmith07@comcast.net](mailto:pesmith07@comcast.net)"; [Peter.D.Rabbon@usace.army.mil](mailto:Peter.D.Rabbon@usace.army.mil);  
[peteronmi@saccounty.net](mailto:peteronmi@saccounty.net)"; [petrea.marchand@yolocounty.org](mailto:petrea.marchand@yolocounty.org)"; [Petrea.marchand@yolocounty.org](mailto:Petrea.marchand@yolocounty.org);  
[pgiovannini@waterboards.ca.gov](mailto:pgiovannini@waterboards.ca.gov)"; [Phillip.Lebednik@lfr.com](mailto:Phillip.Lebednik@lfr.com)"; [pkinney@kinneticlabs.com](mailto:pkinney@kinneticlabs.com);  
[gagwaai@aol.com](mailto:gagwaai@aol.com)"; Olsen, Randy P SPK; [rbaldwin@sjgov.org](mailto:rbaldwin@sjgov.org)"; [rbaxt@parks.ca.gov](mailto:rbaxt@parks.ca.gov);  
[rbrewer@water.ca.gov](mailto:rbrewer@water.ca.gov)"; [rcosta@kleinfelder.com](mailto:rcosta@kleinfelder.com)"; [rd2068@cal.net](mailto:rd2068@cal.net)"; [rdenton06@comcast.net](mailto:rdenton06@comcast.net); Vermeeren,  
Rene A SPL; [RGoulartpostofficebox@gmail.com](mailto:RGoulartpostofficebox@gmail.com)"; [rgrimes@jsanet.com](mailto:rgrimes@jsanet.com); Dabal, Richard P NAN02;  
[Richard.Smith@fws.gov](mailto:Richard.Smith@fws.gov)"; [rnorthup@erscorp.us](mailto:rnorthup@erscorp.us); Vrhoticky, Robert D SPK; Koenigs, Robert L SPK;  
[Robert.Scarborough@water.ca.gov](mailto:Robert.Scarborough@water.ca.gov)"; [robin@yolobasin.org](mailto:robin@yolobasin.org); [Roger.Churchwell@ci.stockton.ca.us](mailto:Roger.Churchwell@ci.stockton.ca.us);  
[rosalie.delrosario@noaa.gov](mailto:rosalie.delrosario@noaa.gov)"; [ross.brian@epa.gov](mailto:ross.brian@epa.gov)"; [RReed@hydroplanllc.com](mailto:RReed@hydroplanllc.com)"; [rsvetich@water.ca.gov](mailto:rsvetich@water.ca.gov);  
[rthanson@usgs.gov](mailto:rthanson@usgs.gov); Rote, Russ LRN; [ruthd@water.ca.gov](mailto:ruthd@water.ca.gov)"; [RVictorine@usbr.gov](mailto:RVictorine@usbr.gov)"; [rvranglr@yahoo.com](mailto:rvranglr@yahoo.com);  
[ryan.olah@fws.gov](mailto:ryan.olah@fws.gov)"; [ryeadon@water.ca.gov](mailto:ryeadon@water.ca.gov)"; [s.crooks@pwa-ltd.com](mailto:s.crooks@pwa-ltd.com)"; [Sajam@SolanoCounty.com](mailto:Sajam@SolanoCounty.com);  
[salvernaz@sbcglobal.net](mailto:salvernaz@sbcglobal.net)"; [sawright@usgs.gov](mailto:sawright@usgs.gov)"; [scappellino@anchorenv.com](mailto:scappellino@anchorenv.com)"; [schwinn.karen@epa.gov](mailto:schwinn.karen@epa.gov);  
[scott.bodensteiner@westonsolutions.com](mailto:scott.bodensteiner@westonsolutions.com)"; [scott.huntsman@shawgrp.com](mailto:scott.huntsman@shawgrp.com)"; [sdavis@jsanet.com](mailto:sdavis@jsanet.com);  
[sdellosso@cambaygroup.com](mailto:sdellosso@cambaygroup.com)"; [seanb@water.ca.gov](mailto:seanb@water.ca.gov)"; [shanksranch@frontiernet.net](mailto:shanksranch@frontiernet.net);  
[shea.thornbury@me.com](mailto:shea.thornbury@me.com)"; [Shih.T.Su@usace.army.mil](mailto:Shih.T.Su@usace.army.mil)"; [sirneyj@sacoe.org](mailto:sirneyj@sacoe.org)"; [smagill@ccp.csus.edu](mailto:smagill@ccp.csus.edu);  
[smartin@jsanet.com](mailto:smartin@jsanet.com)"; [smaxwell@water.ca.gov](mailto:smaxwell@water.ca.gov)"; [smcconnell@waterboards.ca.gov](mailto:smcconnell@waterboards.ca.gov); Smith, Chip R HQDA;  
[sorenson@csus.edu](mailto:sorenson@csus.edu)"; [sosnowskiassoc@sbcglobal.net](mailto:sosnowskiassoc@sbcglobal.net)"; [sshapiro@downeybrand.com](mailto:sshapiro@downeybrand.com)"; [ssharideh@sjgov.org](mailto:ssharideh@sjgov.org);  
[stacey.smith@boxer.senate.gov](mailto:stacey.smith@boxer.senate.gov)"; [statayon@tnc.org](mailto:statayon@tnc.org); Holmstrom, Steven F SPK; [Stuar.Appelbaum@arcadis-us.com](mailto:Stuar.Appelbaum@arcadis-us.com);  
McCallister, Sue E SPK; [sung@water.ca.gov](mailto:sung@water.ca.gov)"; [susan.wang@noaa.gov](mailto:susan.wang@noaa.gov)"; [swilsonb@water.ca.gov](mailto:swilsonb@water.ca.gov);  
[swinkler@sjgov.org](mailto:swinkler@sjgov.org)"; [Tammi.M.Skalitzky@usace.army.mil](mailto:Tammi.M.Skalitzky@usace.army.mil); Toland, Tanis J SPK; [tbernard@water.ca.gov](mailto:tbernard@water.ca.gov);  
[tcchapman@hntb.com](mailto:tcchapman@hntb.com)"; [tclark@mbakercorp.com](mailto:tclark@mbakercorp.com)"; [tely@dbw.ca.gov](mailto:tely@dbw.ca.gov)"; [tengstro@water.ca.gov](mailto:tengstro@water.ca.gov);  
[teresalpacheco@aol.com](mailto:teresalpacheco@aol.com)"; [terlewine@swc.org](mailto:terlewine@swc.org)"; [tflinn@sjgov.org](mailto:tflinn@sjgov.org)"; [Tgaines@water.ca.gov](mailto:Tgaines@water.ca.gov);  
[Tgau@sjgov.org](mailto:Tgau@sjgov.org); Reyes, Theresa S SPN; Catarella, Thomas M SPK; Kendall, Thomas R SPN;  
[thomasdon@SacCounty.NET](mailto:thomasdon@SacCounty.NET)"; [thomasj@sfei.org](mailto:thomasj@sfei.org); [thoward@waterboards.ca.gov](mailto:thoward@waterboards.ca.gov); Karpin, Timothy L SPK;  
[tjl@water.ca.gov](mailto:tjl@water.ca.gov)"; [tkeegan@ecorpconsulting.com](mailto:tkeegan@ecorpconsulting.com)"; [tkimball@usgs.gov](mailto:tkimball@usgs.gov)"; [Tmoran@waterboards.ca.gov](mailto:Tmoran@waterboards.ca.gov);  
[tmz@talavera.us](mailto:tmz@talavera.us)"; [Todd.L.Smith@aphis.usda.gov](mailto:Todd.L.Smith@aphis.usda.gov); [Tom.Trexler@URSCorp.com](mailto:Tom.Trexler@URSCorp.com); [tpogue@PACIFIC.EDU](mailto:tpogue@PACIFIC.EDU);  
[ttrexler@jsanet.com](mailto:ttrexler@jsanet.com)"; [TWH@shanwil.com](mailto:TWH@shanwil.com); Stalker, Tyler M SPK; [ulrichluscher@sbcglobal.net](mailto:ulrichluscher@sbcglobal.net);  
[Vendlinski.Tim@epamail.epa.gov](mailto:Vendlinski.Tim@epamail.epa.gov)"; [vida.wright@veridicogroup.com](mailto:vida.wright@veridicogroup.com)"; [w.krauss@us.army.mil](mailto:w.krauss@us.army.mil);  
[walt.sykes@ca.usda.gov](mailto:walt.sykes@ca.usda.gov)"; [walteryp@aol.com](mailto:walteryp@aol.com)"; [washburnt@saccounty.net](mailto:washburnt@saccounty.net); Smith, Wayne S SPK;  
[wab67mustang@aol.com](mailto:wab67mustang@aol.com)"; [wdarsie@ksninc.com](mailto:wdarsie@ksninc.com); Hinsley, William E; [wgayou@water.ca.gov](mailto:wgayou@water.ca.gov); Guthrie, William  
H SPK; Leady, William J COL SPK; Cope, William L SPN; Brostoff, William N SPN; [wilson80@msn.com](mailto:wilson80@msn.com);  
[wstringfellow@lbi.gov](mailto:wstringfellow@lbi.gov); Smith, Webb T; Lin, Yuanwen SPK; [Yvette.Redler@noaa.gov](mailto:Yvette.Redler@noaa.gov)

**Subject:** Delta Islands and Levees Feasibility Study Public Scoping Meetings (UNCLASSIFIED)  
**Date:** Friday, February 08, 2013 3:56:00 PM  
**Attachments:** [dilsf\\_postcard\\_clarksburg-sacramento.pdf](#)

---

Classification: UNCLASSIFIED  
Caveats: NONE

Please refer to attached meeting notice regarding upcoming public scoping meetings.

Brad Johnson  
Landscape Architect  
U.S. Army Corps of Engineers,  
Environmental Planning Section, Sacramento District  
[Bradley.C.Johnson@usace.army.mil](mailto:Bradley.C.Johnson@usace.army.mil)

Classification: UNCLASSIFIED  
Caveats: NONE

## **ATTACHMENT B**



US Army Corps  
of Engineers  
Sacramento District

## Delta Islands & Levees Feasibility Study

Public Scoping Meetings

February 19-20, 2013

Clarksburg and Sacramento, CA

Name	Mailing Address	E-mail Address
Steve Basson	PO Box 1044 Walnut Grove, CA	benson@citlink.net
Dave Mraz	P.O. Box 942836 Sacramento, CA 94283	dmraz@water.ca.gov
Steve Heringer	PO Box 41 Clarksburg 95812	sheringer@aol.com
Mike McCord	PO BOX 130 CLARKSBURG 95812	mccord@msn.com
Mary McEagart	34840 S River Rd. Clarksburg 95812	cavelauding@yahoo.com
TEREY WILSON	P.O. Box 631 Clarksburg 95812	sactw@bol.com
Marich <del>W</del> Carr	47530 N. Courtland Rd. Clarksburg 95812	maricgarr@yahoo.com
Gary Prost	222 Grand Canal Blvd #7, Stockton 95207	gary.prost@mail.house.gov
GILBERT COOPIO	1711 TRIBUTA RD. STE. A, SAC. CA 95815	cosid@wbkengineers.com
Matt Henry	11275 st Hwy 160, Courtland CA 95815	matt@grameandhenry.com
Terre Hooker	609 Jefferson St. Fairfield, CA 94533	terre.hooker@mail.house.gov
Jeffrey Turnbull	2068 Prospect Road W, Suite 200, Clarksburg 95812	turnbull@btlcommunications.com
Roscoe Reynolds	4444 W. Linden Rd. Sacramento 95806	sac1240@clearnet.net





US Army Corps  
of Engineers  
Sacramento District

## Delta Islands & Levees Feasibility Study

Public Scoping Meetings

February 19-20, 2013

Clarksburg and Sacramento, CA

Name	Mailing Address	E-mail Address
Mike O'Hagan	1508 Euclid Rd #130 Roseville 95661	mohagan@huth.com
John Greifzer	Center for County, 30 Main Rd, Martinez 94553	john.greifzer@cccounty.us
Jim Guston	22 E. Weber Ave Stockton 95202	jim.guston@stockton.gov
Robert Busby	11020 Sun Center Dr Suite 200 Corona 92670	rbusby@waterboards.ca.gov
Bob Scarborough	3404 El Camino Ave Suite 200 San Jose 95131	robert.scarborough@water.ca.gov
Paul Larsen	" "	Paul.Larsen@water.ca.gov
Carmen Chung	1455 Market St. San Francisco, CA 94103	carmen.chung@usace.army.mil
Wally Smith	Bluffton SC	wallysmith@earthlink.net
Stephanie Skophammer	75 Hawthorne St. San Francisco CA 94115	skophammer.stephanie@epa.gov
Mark Taylor	P.O. Box 1831, Louisville, KY	mark.taylor@geiconsultants.com
Aaron Medders		aaron.medders@epa.gov
Rebecca Lueb	3721 Dudley Blvd McClintock CA	lueb@shades.org
Jeff Wingfield	2201 W. Washington St. Stockton, CA 95204	jeff@shades.org
Teresa Pacheco	3758 Grand Avenue #300 Stockton, CA 95210	teresa.pacheco@epa.gov
Andrea Lohap	14115 9th St. Sacramento	andrea@water.ca.gov
Mike Umazakeri	14115 9th St. Sacramento	mike@water.ca.gov



US Army Corps  
of Engineers  
Sacramento District

## Delta Islands & Levees Feasibility Study

Public Scoping Meetings

February 19-20, 2013

Clarksburg and Sacramento, CA

Name	Mailing Address	E-mail Address
Michael Bayou		wbayou@oakridge.ca.gov
Anthony Maresca		AMARES@OAKRIDGE.CA.GOV
Debi Elliot	PO Box 259, Clarksburg, CA 95612	delliott@citlint.net
Mike Maresca	PO Box 130, MARESCA, CA 95612	MIKE.MARESCA@OAKRIDGE.CA.GOV
Leiji Liu	3310 El Camino Ave. Suite 200, Sacramento, CA 95834	leiji.liu@water.ca.gov
Brandon Minto	412 G Street, Davis, CA 95616	brandon.minto@gmail.com
Richard Smith	2800 Cottage Way - W-1832 SAC	Richard-Smith@FWS.gov
Arl Stephens	10 Lombard St. Suite 409 SE, CA 94111	arlene.stephens@calhwy.org
George Booth	Sacramento County 827 7th St. PM 301, Sacramento, 95814	Booth@Sacounty.net
Kristal Tedde		Kristal@theoverranch.ca.gov
Becky Victorine	801 I St., Suite 140	Victorine@usbr.gov
Sean Boyeban	Deer	seanb@water.ca.gov
Mike Burt	USACE	mike.burt@usace.army.mil
Ally LAKE	PB PX 929, MATHUR GROVE 95611	glabrie@dcenr.intern.mt
Aparakshines	1325 J Street Sac CA 95814	alishae.keshner@usace.army.mil
Julie Huirana	700 12th St NW Suite 1100, Wash DC 20005	jhuirana@maratt.com
John Coleman	1970 Broadway #940, Oakland, CA 94612	john@bayplanning.ca.gov

# Sacramento-San Joaquin Delta

## Delta Islands and Levees Feasibility Study

### Public Scoping Meeting – Open House

February 2013

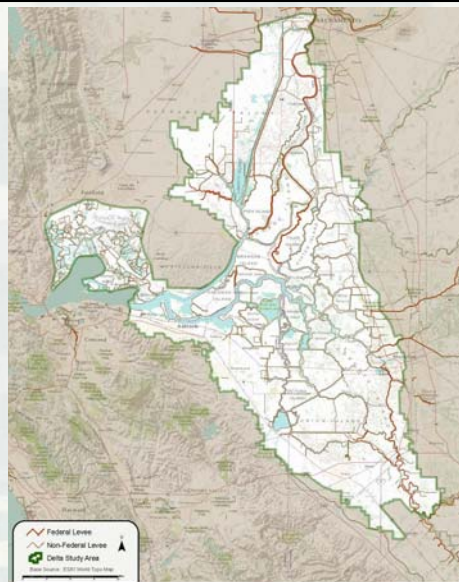


US Army Corps of Engineers  
**BUILDING STRONG®**



## Background

- Cost Share Agreement between Corps and DWR to conduct study
- Focus of the study is **Flood Risk Management** and **Ecosystem Restoration**
- Intent is to be **compatible** with other planning efforts, but **standalone**



## Open House Meeting

- Sign-in to stay informed about the study
- Visit the poster stations and talk with team members
- Comment on the scope of the study
  - What flood risk management problems should be considered?
  - What ecological problems should be considered?



3

BUILDING STRONG®

## PLANNING AND ENVIRONMENTAL COMPLIANCE

Planning Process	NEPA Requirements
Identify Problems and Opportunities	Publish Notice of Intent
	Conduct scoping process <a href="#">30-day scoping period</a>
Inventory and Forecast Conditions	Describe existing and future without project conditions
Alternative Formulation, Evaluation, and Comparison	Identify and compare impacts of identified alternatives
Identify Tentatively Selected Plan	Draft Environmental Impact Statement (EIS) <a href="#">45-day public review</a>
	Final EIS: Respond to comments and concerns <a href="#">30-day public review</a>
Select Recommended Plan	Record of Decision



4

BUILDING STRONG®

## The Delta System: What's at Stake?

- Legacy towns
- Working landscapes
- Recreation
- Fisheries
- Water
- Natural Habitat
- Endangered Species
- Agricultural production
- Commercial Navigation



5

BUILDING STRONG®

## Why is the Delta System at Risk?

- Levee Fragility
- Ecosystem Loss
- Subsidence
- Saltwater Intrusion
- Climate Change
- Seismicity
- Competing Uses



6

BUILDING STRONG®

## Public Comments

- **What *flood risk management problems* should this study consider?**
  - ▶ For Example - Population centers at X Location are located behind levees that are subject to flooding due to stability, seepage, and overtopping concerns which could result in loss of life and flood damages.
- **What *ecological problems* should this study consider?**
  - ▶ For Example - Levee construction in close proximity to X Channel has resulted in separation of historic floodplains from natural hydrologic flooding events through channels within the Delta.



7

BUILDING STRONG®

## Contact Information

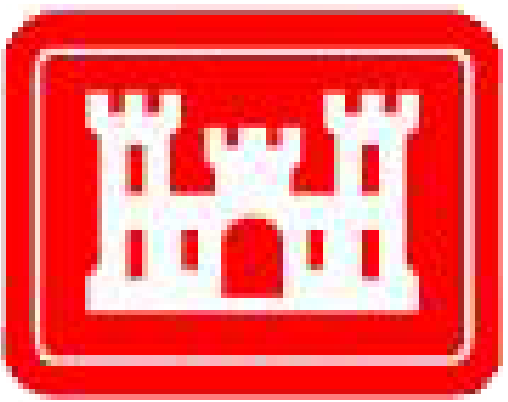
- E-mail: [spk-pao@usace.army.mil](mailto:spk-pao@usace.army.mil)
- Phone: 916-557-7461
- Mailing Address:  
1325 J Street, Room 1513  
Sacramento, CA 95814



8

BUILDING STRONG®





**US Army Corps  
of Engineers®**

# STUDY OVERVIEW

*Delta Islands & Levees Feasibility Study*

## Study Focus

Flood Risk Management and Ecosystem Restoration (not water supply)

## Study Area

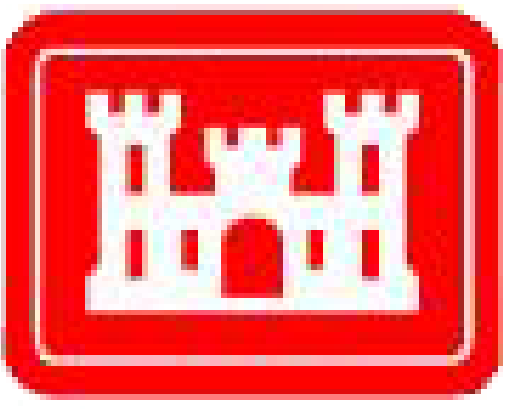
The Sacramento – San Joaquin Delta is a web of channels and reclaimed islands, covering about 738,000 acres, at the confluence of five rivers protected by a network of 1,100-plus miles of levees constructed over the last 150 years.

Home to hundreds of species of fish, birds, mammals and reptiles, the Delta is part of the largest estuary on the west coast, and was named an Ecosystem of National Significance by the Environmental Protection and Biodiversity Conservation (EPBC) Act in 2011.

The Delta is also the largest single source of California's water supply, providing 25 million Californians with drinking water, and irrigating millions of acres of farmland in the Central Valley. With nearly three-fourths of the Delta producing agriculture, it directly impacts not only the livelihood of the more than 500,000 people who live within the Delta, but the entire U.S as the Delta contributes billions of dollars in production to the nation annually.



**BUILDING STRONG®**



**US Army Corps  
of Engineers®**

# STUDY OVERVIEW

## *Delta Islands & Levees Feasibility Study*

### **Ecological**

There are a number of factors contributing to the ecological decline of Delta species and habitats, each of which has the capability to produce adverse impacts independently and/or in combination with each other.

Identified contributors of adverse impacts to the ecological health of the Delta ecosystem include:

- pesticides
- channelization
- exotic and non-native invasive species
- water supply diversions
- agricultural and urban runoff
- wastewater discharges

Specifically, channelization of rivers and streams through the construction of levees has resulted in the widespread loss of tidal marsh, shaded riverine aquatic habitat, and the disconnection of floodplains from waterways.

If this loss of Delta habitats and disconnection from floodplains continues, the current substantial declines in the Delta's fisheries could result in the extinction of culturally and economically critical species. Many of the defining characteristics of the pre-channelized ecosystem (spatial extent, habitat heterogeneity, and dynamic storage) have either been lost or substantially altered as a result of land use and water management practices during the past 100 years in California. Nearly 95 percent of the historic wetland habitat in the Delta has been converted to agricultural and urban uses.

### **Flood Risk**

Delta levees protect critical infrastructure such as:

- state highways
- rail lines
- natural gas fields
- gas and fuel pipelines
- drinking water pipelines
- businesses
- towns

While portions of Sacramento and Stockton are located within the Delta, most of its inhabitants are located amongst six Delta islands. As a result, the Delta Islands & Levees Feasibility Study is closely coordinating with Sacramento and Stockton-related flood risk reduction studies to ensure assumptions, scopes, and alternative plans are compatible.

Problems associated with in-Delta flood risk are largely due to the potential for levee failure and overtopping during flood events. These risks are increased as a result of climate change, sea level change, subsidence (as much as 25 feet below sea level) and seismic risk.





US Army Corps  
of Engineers®

# STUDY PROCESS

Delta Islands & Levees Feasibility Study

## National Environmental Policy Act (NEPA)

The ultimate purpose of NEPA is to assist decision makers and the public in considering environmental amenities in the decision-making process

- Identification of significant environmental resources in the proposed project area
- Consideration of a full range of reasonable alternatives
- Assessment of potential impacts
- Full disclosure of potential impacts
- Mitigation measures to avoid, minimize, or compensate for adverse impacts

"To declare a national policy which will encourage productive and enjoyable harmony between man and his environment; to promote efforts which will prevent or eliminate damage to the environment and biosphere and stimulate the health and welfare of man; to enrich the understanding of the ecological systems and natural resources important to the Nation..."

—*Preamble to the National Environmental Policy Act of 1969*

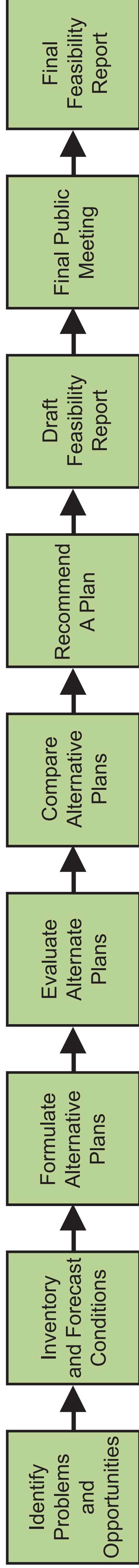
## Meeting Purpose and Goals

The goal of this meeting is to give the public an opportunity to provide input on the study and help determine its scope.

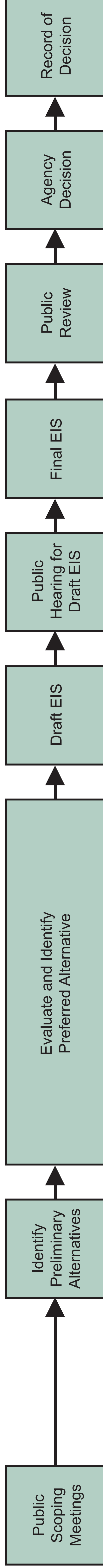
The study team is seeking input on the scope of the study, to include identification of flood risk management and ecosystem restoration problems and opportunities, and the team is available to answer any questions about NEPA or the Corps Planning Process.

The team's goal is to ensure that the most economically and environmentally justified project is recommended.

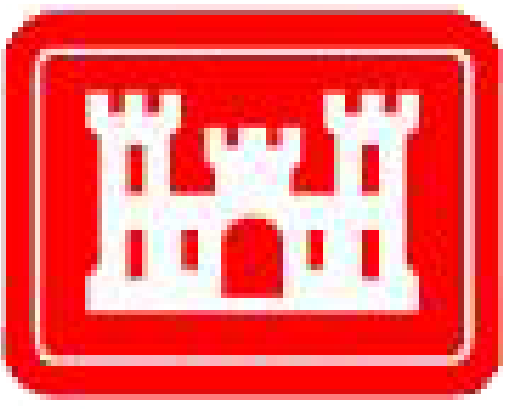
### Corps Planning Process



### NEPA Process



**BUILDING STRONG®**



US Army Corps  
of Engineers®

# COMMENTS

*Delta Islands & Levees Feasibility Study*

## We want to hear from you.

There are three ways you can provide comments:

1. Complete and submit a comment card during today's meeting.
2. Write and submit through post mail to:  
**U.S. Army Corps of Engineers, Sacramento**  
**Attn: Tyler Stalker (CESPK-PA)**  
**1325 J St., Room 1513**  
**Sacramento, CA 95814**

Or

3. Write and submit through e-mail to:  
**spk-pao@usace.army.mil**

***Comment Period Ends  
DATE***



## What we're looking for:

What ecological problems should this study consider?

***For example - If levee construction in close proximity to channels has resulted in separation of historic floodplains from natural hydrologic flooding events through channels within the Delta, then let us know.***

What flood risk management problems should this study consider?

***For example - If population centers at X Location are located behind levees that are subject to flooding due to stability, seepage, and overtopping concerns which could result in loss of life and flood damages, then we want to know.***



**BUILDING STRONG®**



US Army Corps  
of Engineers®

# RELATIONSHIP TO OTHER INITIATIVES

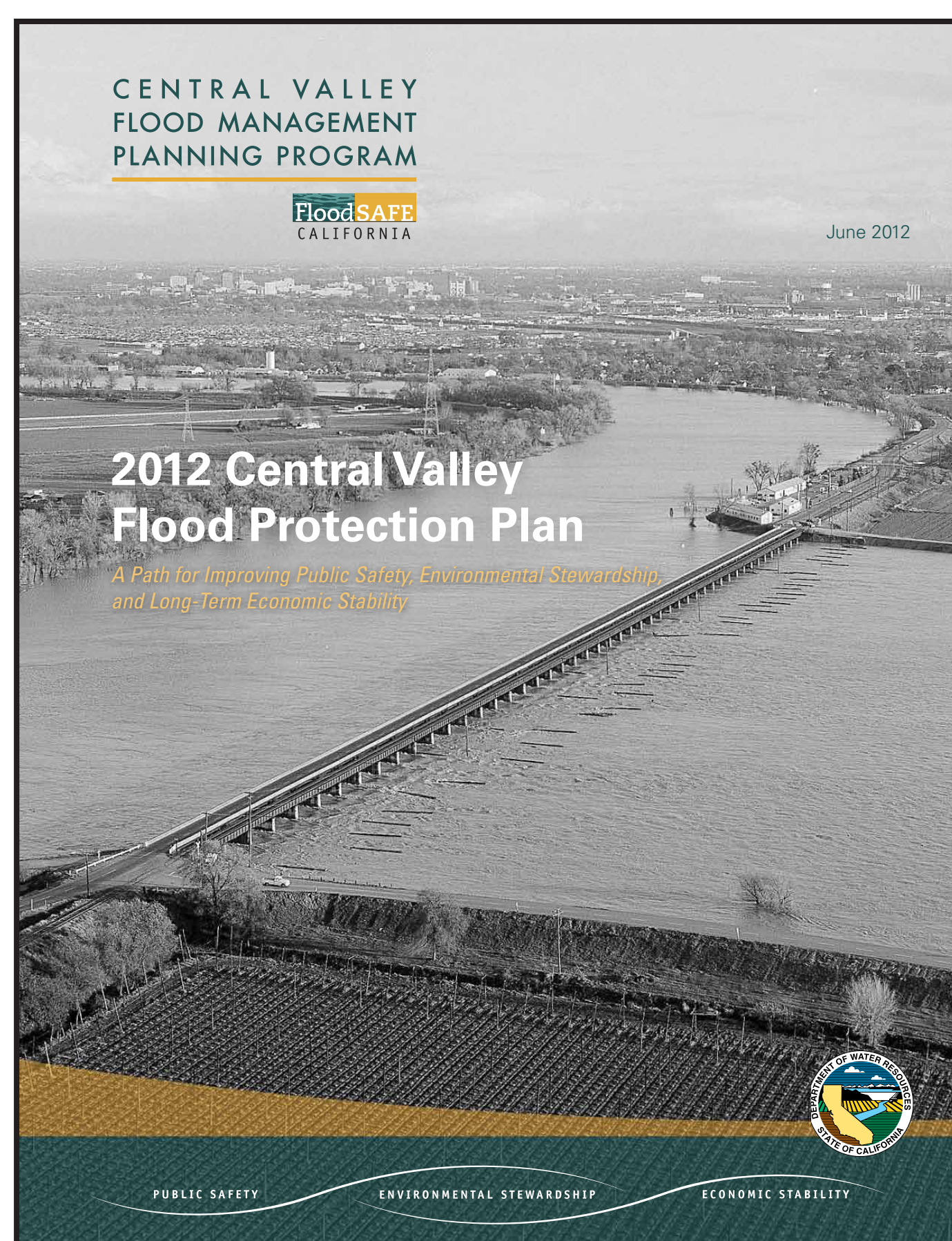
*Delta Islands & Levees Feasibility Study*

In light of the various planning efforts throughout the Delta, the study will be driven by two rules:

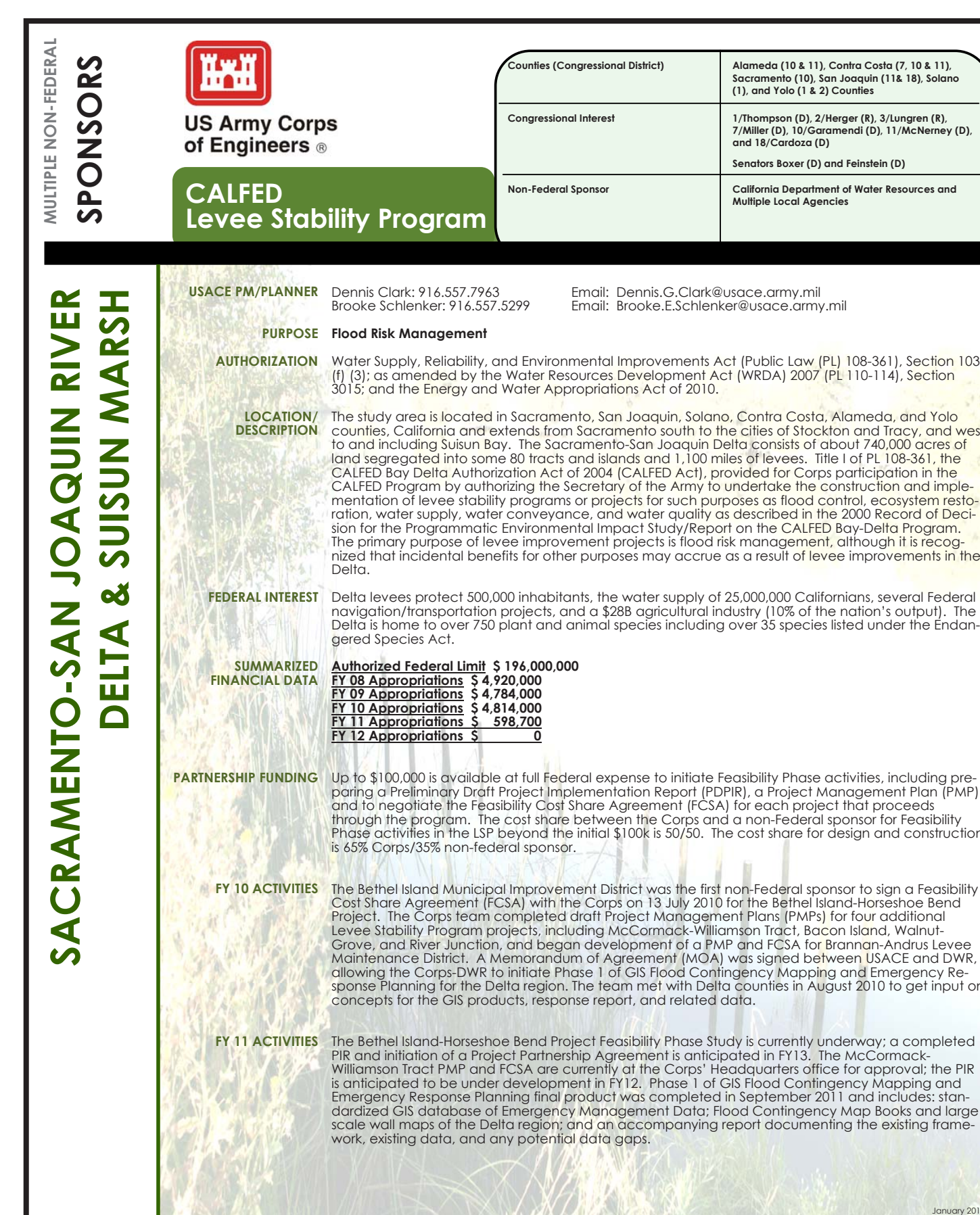
1. Recommendations must not be dependent upon the implementation of other planning efforts
2. Recommendations must not hinder other planning efforts



<http://deltacouncil.ca.gov>



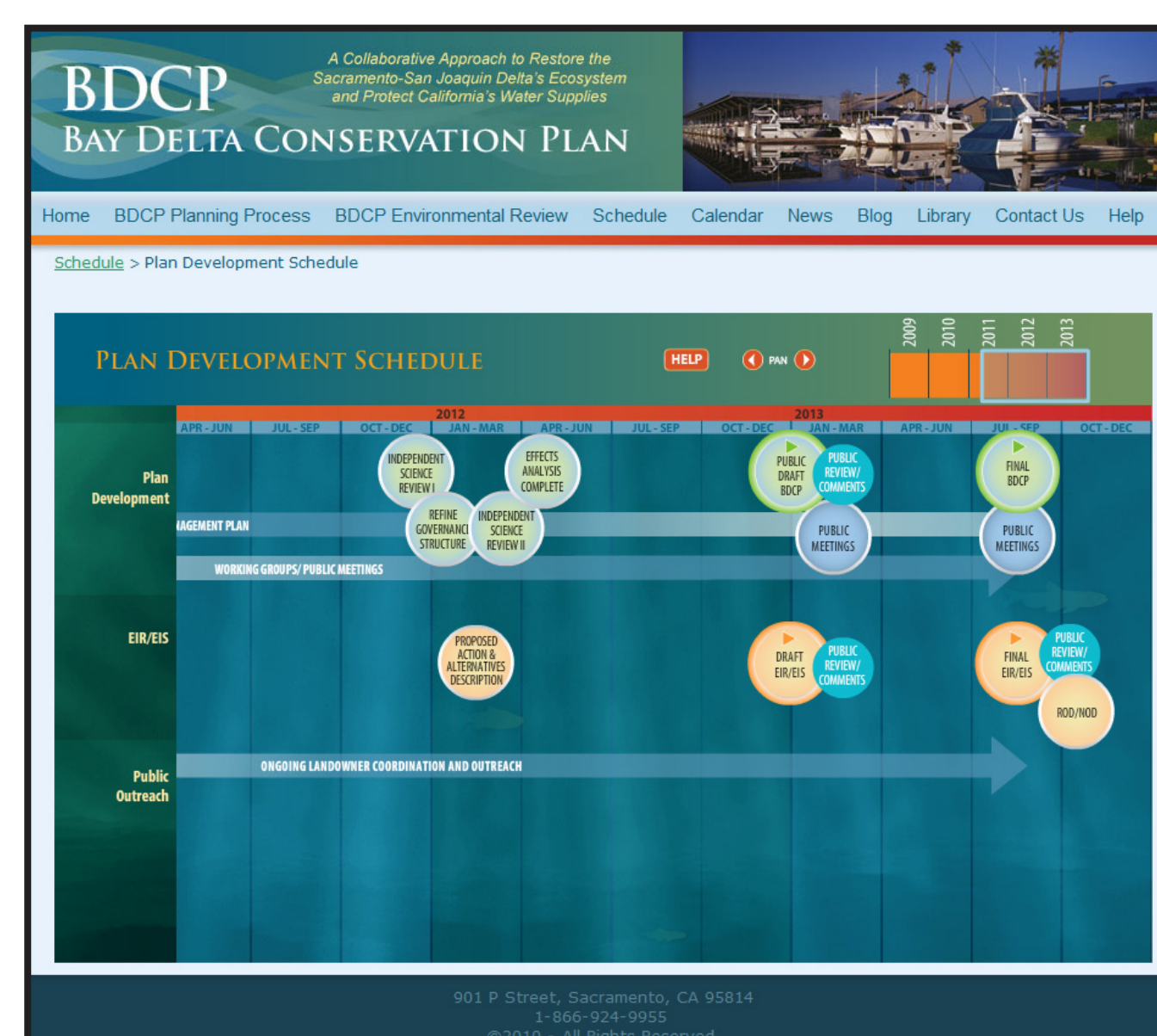
<http://www.cvfpb.ca.gov/CVFPP>



Levee Stability Program Fact Sheet



CALFED Levee Stability Program  
Emergency Response Plan



<http://baydeltaconservationplan.com>

**BUILDING STRONG®**



US Army Corps  
of Engineers®

# WELCOME

Open House Public Scoping Meeting

## Delta Islands & Levees Feasibility Study

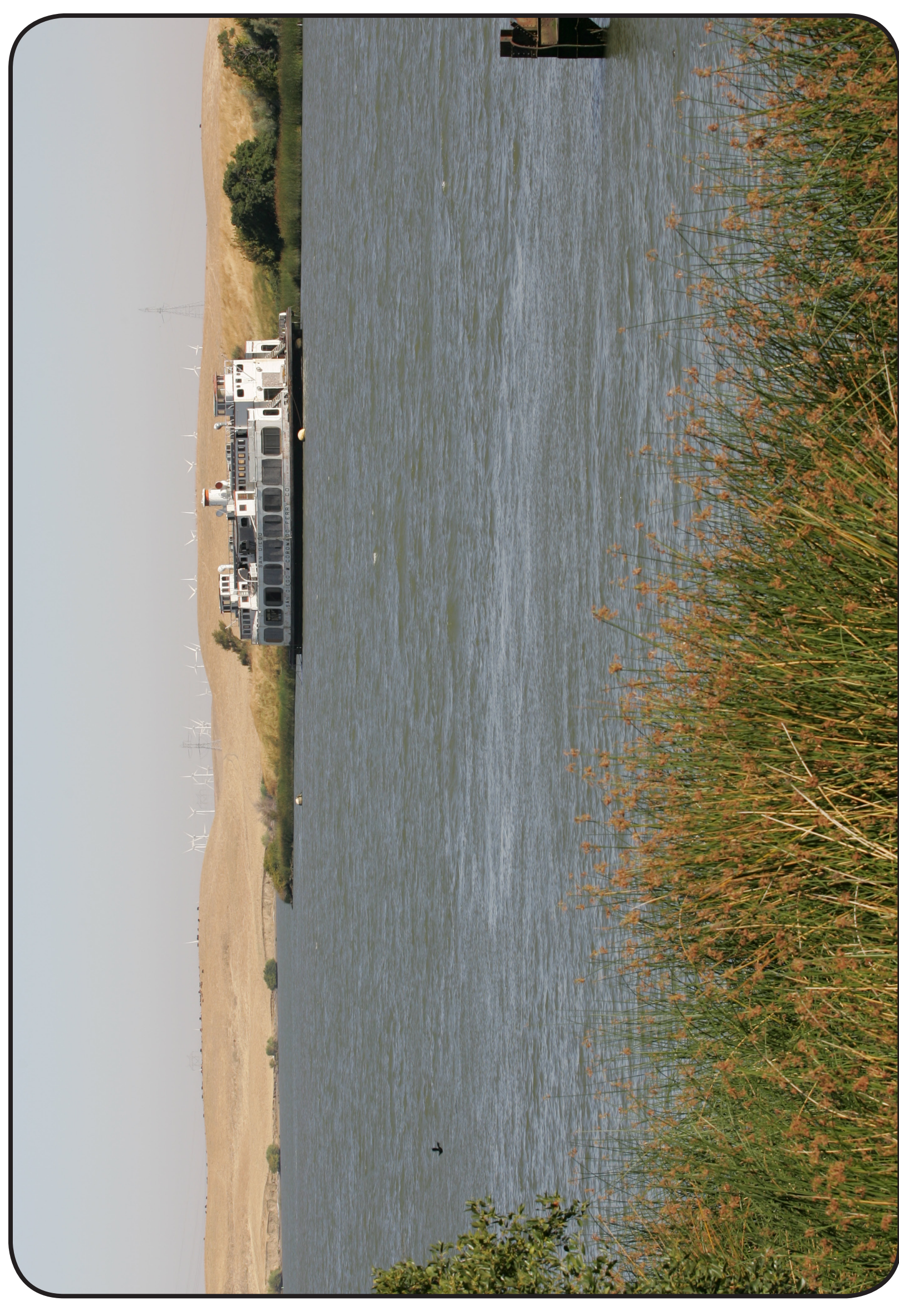
Please Sign In Here

**Your Input is Welcome**

Comment cards available at Welcome Station and Comment Station  
Please return comment cards to comment station or any Corps employee

**Comments may also be sent to:**

Mr. Tyler Stalker  
U.S. Army Corps of Engineers, Sacramento District  
1325 J Street, Room 1513, Sacramento, CA 95814  
E-Mail: [spk-pao@usace.army.mil](mailto:spk-pao@usace.army.mil)  
For Assistance, Telephone: (916) 557-5100



**BUILDING STRONG®**

# Sacramento-San Joaquin Delta

## Delta Islands and Levees Feasibility Study

### Public Scoping Meeting – Open House

February 2013

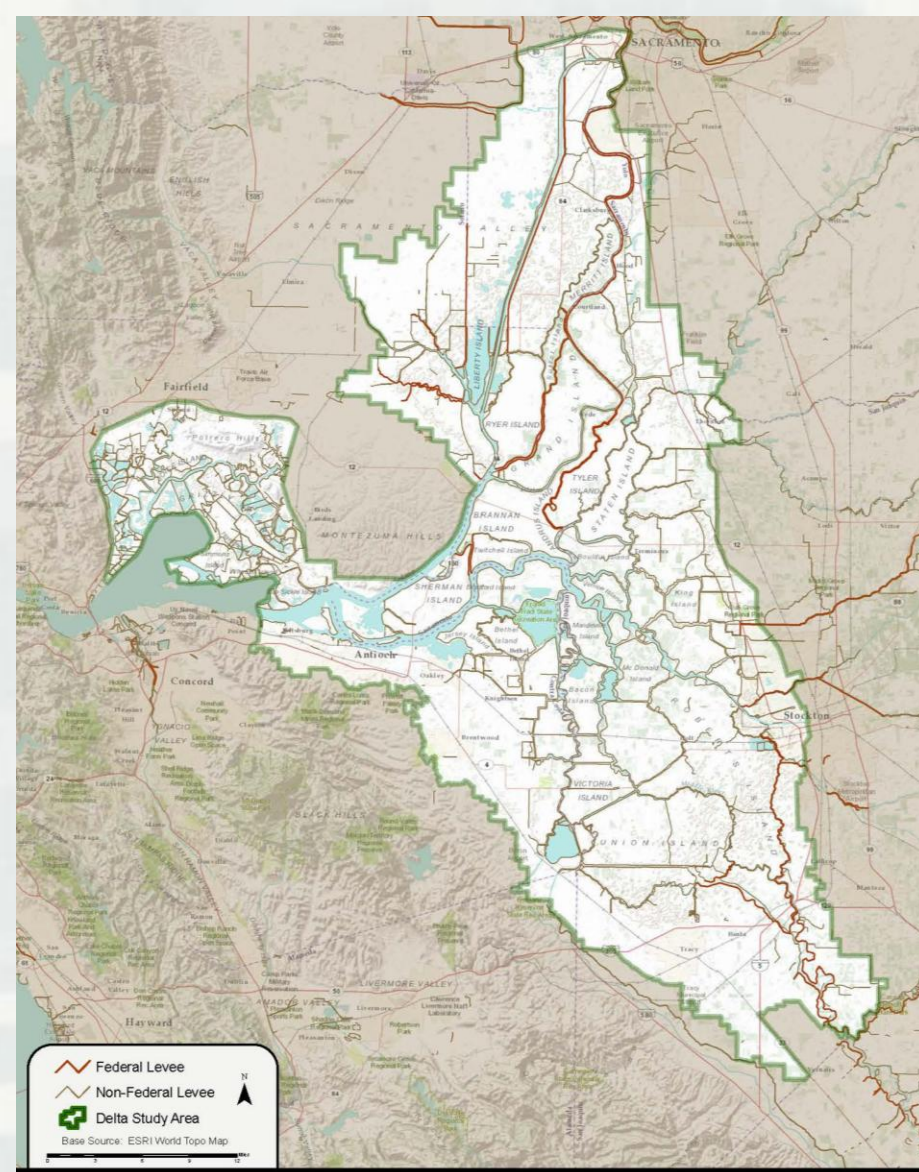


US Army Corps of Engineers  
**BUILDING STRONG®**



# Background

- Cost Share Agreement between Corps and DWR to conduct study
- Focus of the study is **Flood Risk Management and Ecosystem Restoration**
- Intent is to be **compatible** with other planning efforts, but **standalone**



# Open House Meeting

- Sign-in to stay informed about the study
- Visit the poster stations and talk with team members
- Comment on the scope of the study
  - What flood risk management problems should be considered?
  - What ecological problems should be considered?



# PLANNING AND ENVIRONMENTAL COMPLIANCE

Planning Process	NEPA Requirements
Identify Problems and Opportunities	Publish Notice of Intent
	Conduct scoping process <u>30-day scoping period</u>
Inventory and Forecast Conditions	Describe existing and future without project conditions
Alternative Formulation, Evaluation, and Comparison	Identify and compare impacts of identified alternatives
Identify Tentatively Selected Plan	Draft Environmental Impact Statement (EIS) <u>45-day public review</u>
	Final EIS: Respond to comments and concerns <u>30-day public review</u>
Select Recommended Plan	Record of Decision



# The Delta System: What's at Stake?

- Legacy towns
- Working landscapes
- Recreation
- Fisheries
- Water
- Natural Habitat
- Endangered Species
- Agricultural production
- Commercial Navigation



# Why is the Delta System at Risk?

- Levee Fragility
- Ecosystem Loss
- Subsidence
- Saltwater Intrusion
- Climate Change
- Seismicity
- Competing Uses



# Public Comments

- **What *flood risk management problems* should this study consider?**
  - ▶ For Example - Population centers at X Location are located behind levees that are subject to flooding due to stability, seepage, and overtopping concerns which could result in loss of life and flood damages.
- **What *ecological problems* should this study consider?**
  - ▶ For Example - Levee construction in close proximity to X Channel has resulted in separation of historic floodplains from natural hydrologic flooding events through channels within the Delta.



# Contact Information

- E-mail: [spk-pao@usace.army.mil](mailto:spk-pao@usace.army.mil)
- Phone: 916-557-7461
- Mailing Address:  
1325 J Street, Room 1513  
Sacramento, CA 95814



# SACRAMENTO AND SAN JOAQUIN RIVER DELTA & SUISUN MARSH

CALIFORNIA  
DEPARTMENT OF WATER  
RESOURCES  
**DWR**



**US Army Corps  
of Engineers®**

## Delta Islands & Levees Feasibility Study

Counties (Congressional District)	Alameda (10 & 11), Contra Costa (7, 10 & 11), Sacramento (10), San Joaquin (11 & 18), Solano (1), and Yolo (1 & 2) Counties
Congressional Interest	1/Thompson (D), 2/Herger (R), 3/Lungren (R), 7/Miller (D), 10/Garamendi (D), 11/McNerney (D), and 18/Cardoza (D)  Senators Boxer (D) and Feinstein (D)
Non-Federal Sponsor	California Department of Water Resources FloodSAFE Environmental Stewardship & Statewide Resources Office (FESSRO)

USACE PM/PLANNER	Dennis Clark: 916.557.7963 Brooke Schlenker: 916.557.5299	Email: Dennis.G.Clark@usace.army.mil Email: Brooke.E.Schlenker@usace.army.mil
PURPOSE	<b>Ecosystem Restoration and Flood Risk Management</b>	
AUTHORIZATION	Senate Resolution, 1 June 1948; Sec. 205 Flood Control Act, 17 May 1950 (P.L. 81-516); Conference Report 108-357 dated 7 Nov 2003 of the Energy and Water Development Appropriations Act (EWDAA), 2004	
LOCATION/ DESCRIPTION	<p>The study area is located in Sacramento, San Joaquin, Solano, Contra Costa, Alameda, and Yolo counties, California and extends from Sacramento south to the cities of Stockton and Tracy, and west to and including Suisun Bay. The Sacramento-San Joaquin Delta consists of about 740,000 acres of land segregated into some 80 tracts and islands and 1,100 miles of levees.</p> <p>The Delta Islands and Levees Feasibility Study (Delta Study) is the Corps' mechanism to participate in a cost-shared solution to address ecosystem restoration, flood risk management, and related water resources in the Delta and Suisun Marsh area. A Feasibility Cost Share Agreement (FCSA) was executed on May 26, 2006 with the DWR, the non-Federal sponsor. The Corps-DWR study team meets regularly to move the study forward and holds periodic Agency Coordination Meetings with associated Federal, State, and local agencies. The study will culminate in a feasibility report that will make recommendations on construction projects and/or additional studies for authorization by Congress.</p>	
FEDERAL INTEREST	The CA Bay-Delta Ecosystem of National Significance is home to over 750 plant and animal species including over 35 species listed under the Endangered Species Act. Delta levees protect 500,000 inhabitants and protect the water supply of 25,000,000 Californians and a \$28B agriculture industry (10% of the nation's output). This study will develop the long-term strategy for Corps projects in the Delta region. The study will assess existing and future flood risks in the Delta, as well as opportunities for ecosystem restoration, and develop a comprehensive roadmap for Corps involvement in a wide range of water resources needs.	
SUMMARIZED FINANCIAL DATA	<p><u>FY 06 Budget</u>    \$ 214,000  <u>FY 07 Budget</u>    \$ 800,000  <u>FY 08 Budget</u>    \$ 859,000  <u>FY 09 Budget</u>    \$ 641,000  <u>FY 10 Budget</u>    \$ 394,000  <u>FY 11 Budget</u>    \$ 239,459  <u>FY 12 Budget</u>    \$ 971,000  <u>FY 13 Budget</u>    \$1,015,000 (President's Budget)</p>	
PARTNERSHIP FUNDING	The cost share between the Corps and DWR for the Feasibility Study is 50/50.	
FY 11/12 ACTIVITIES	The Corps/DWR Project Delivery Team (PDT) identified problems, opportunities, goals, constraints, objectives, and preliminary measures in order to focus the study. Multi-agency coordination meetings were held to solicit additional input and answer questions on the study. A Planning Rescoping Charette was conducted in August 2012.	
FY 13 ACTIVITIES	The PDT will continue plan formulation work; finalize the revised PMP; conduct a second Planning Rescoping Charette (Dec 2012); continue to define existing and future without project conditions; continue to hold multi-agency coordination meetings; hold an In Progress Review meeting (Feb 2013); conduct public scoping meetings (Feb 2013); and reach Alternatives Milestone 1 (April 2013).	
TECHINICAL INVESTIGATIONS	NEPA/CEQA compliance, Phase 1 Environmental Site Assessment, and biological assessment and habitat constraints analysis/biological evaluation; existing data and information will be used to the maximum extent practicable.	
CONSIDERATIONS	This study will incorporate the results of the State's Delta Risk Management Strategy (DRMS) and other relevant planning efforts.	

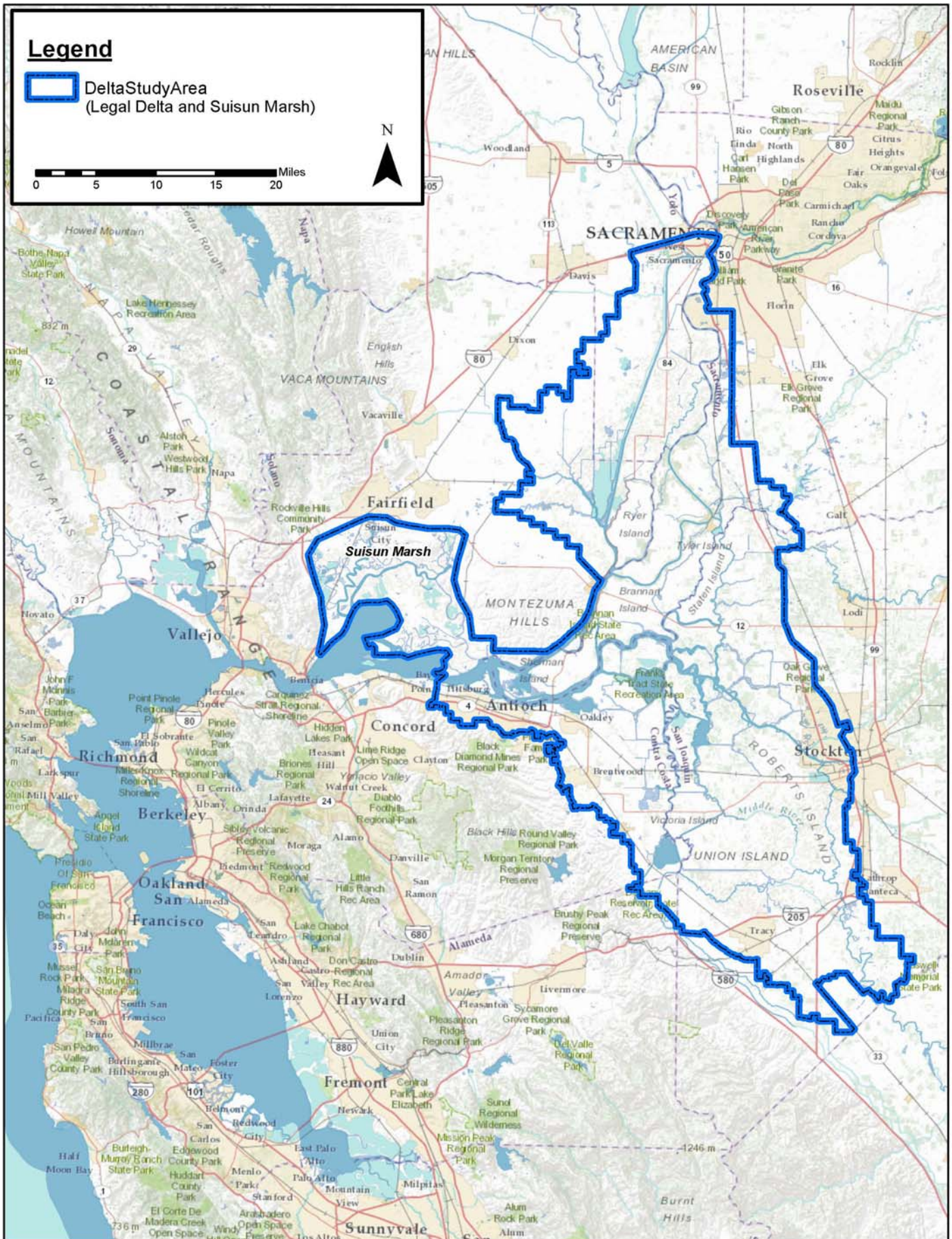
## Legend



DeltaStudyArea  
(Legal Delta and Suisun Marsh)

0 5 10 15 20 Miles

N





US Army Corps  
of Engineers ®

## CALFED Levee Stability Program (LSP)

Counties	Alameda, Contra Costa, Sacramento, San Joaquin, Solano, & Yolo Counties
Congressional Interest	1/Thompson (D), 7/Miller (D), 10/Garamendi (D), 11/McNerney (D) 18/Cardoza (D) Senators Boxer (D) and Feinstein (D)
Non-Federal Partner	California Department of Water Resources

# EMERGENCY MANAGEMENT AND RESPONSE PLANNING

USACE PM/Planner Dennis Clark: 916.557.7963 Email: Dennis.G.Clark@usace.army.mil  
Brooke Schlenker: 916.557.5299 Email: Brooke.E.Schlenker@usace.army.mil

### PURPOSE Flood Risk Management

**AUTHORIZATION** Water Supply, Reliability, and Environmental Improvement Act (P.L. 108-361), Section 103 (f)(3); as amended by the Water Resources Development Act (WRDA) 2007 (P.L. 110-114), Sec. 3015; and the Energy and Water Appropriations Act of 2010 (P.L. 111-85), Section 210.

*"(iv) develop a Delta Levee Emergency Management and Response Plan that will enhance the ability of Federal, State, and local agencies to rapidly respond to levee emergencies;"*

### LOCATION/ BACKGROUND

The study area is located in Sacramento, San Joaquin, Solano, Contra Costa, Alameda, and Yolo counties, California and extends from Sacramento south to the cities of Stockton and Tracy, and west to and including Suisun Bay. The Sacramento-San Joaquin Delta consists of about 740,000 acres of land segregated into some 80 tracts and islands and 1,100 miles of levees. Delta levees protect 500,000 inhabitants and protect the water supply of 25,000,000 Californians and a \$28B agriculture industry (10% of the nation's output). The Emergency Response Planning efforts for the Delta will work in conjunction with existing plans at the Federal, State and local level to better coordinate a response to potential Delta levee failures.

### SUMMARIZED FINANCIAL DATA

#### CALFED Levee Stability Program

FY 08 Appropriation	\$ 4,920,000
FY 09 Appropriation	\$ 4,785,000
FY 10 Appropriation	\$ 5,314,000
FY 11 Appropriation	\$ 598,700
FY 12 Appropriation	\$ 0

#### Phase 1 Emergency Response Planning

Estimated Federal Cost	\$ 500,000
Estimated Non-Federal Cost	\$ 500,000
Total Estimated Project Cost	\$ 1,000,000

#### Phase 2 Emergency Response Planning

Scope is currently under development; initiation is pending available Federal funds.

### PROJECT ACTIVITIES

The U.S. Army Corps of Engineers (Corps) and the California Department of Water Resources (DWR) signed a Memorandum of Agreement (MOA), allowing the Corps-DWR to initiate Phase 1 of GIS Flood Contingency Mapping and Emergency Response Planning for the Delta region. The team met with Delta counties in August 2010 to get input on concepts for the GIS products, response report, and related data. The Corps held several additional rounds of meetings with local entities to validate data collected throughout the process, and gather additional information from County and RD representatives.

Final products for Phase 1 include:

- Standardized GIS database of Emergency Management data;
- Flood Contingency Map Books and large scale wall maps of the Delta region; and
- An accompanying report documenting the existing framework, existing data, and any potential data gaps.

Phase 1 was completed in September of 2011. Printed documents will be provided to DWR and the Delta counties prior to the 2011-2012 flood season. Electronic data available at:

[www.DeltaFloodEmergencyPlan.org](http://www.DeltaFloodEmergencyPlan.org)

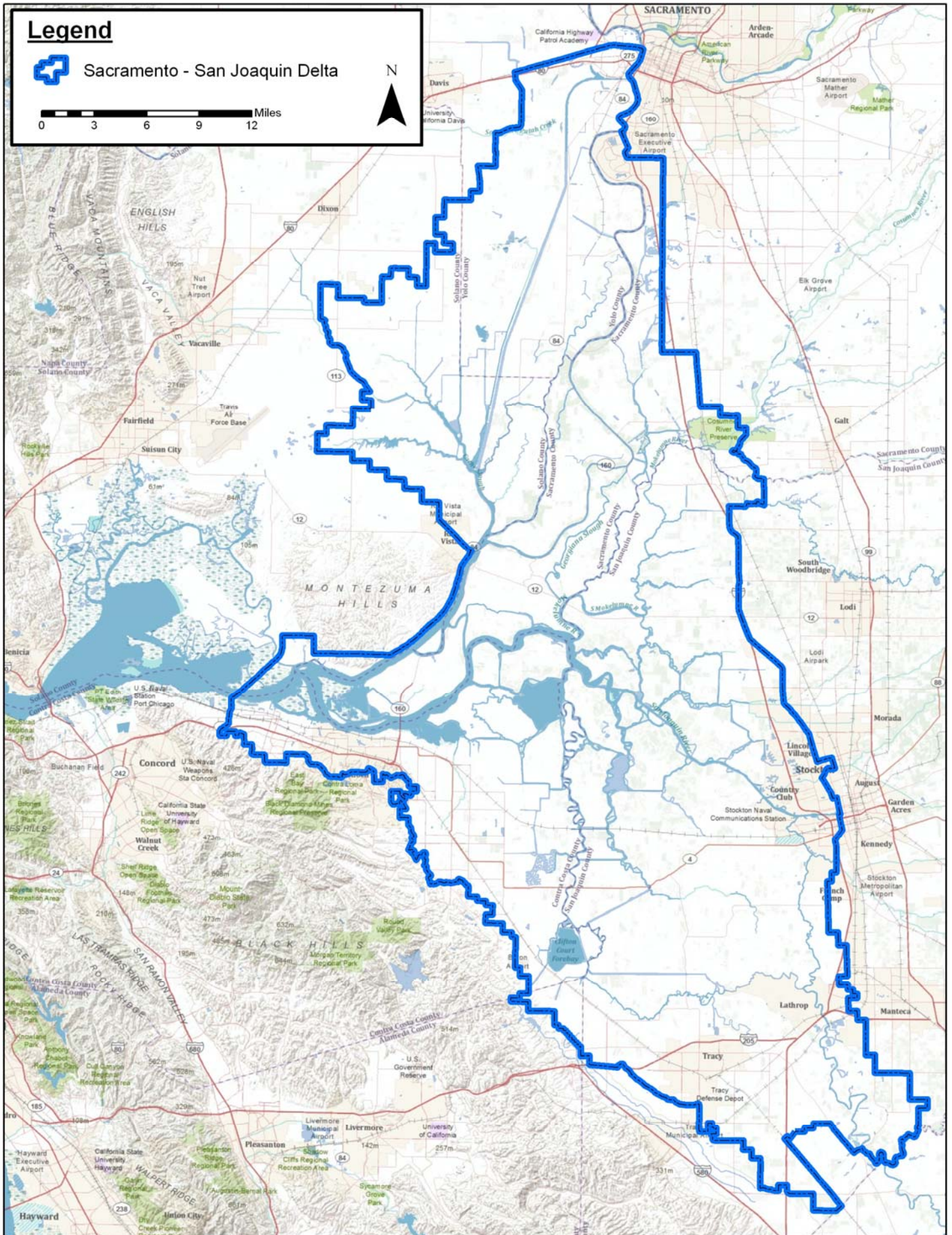
## Legend



Sacramento - San Joaquin Delta

N

0 3 6 9 12 Miles





**US Army Corps  
of Engineers®**

## CALFED Levee Stability Program

Counties (Congressional District)	Alameda (10 & 11), Contra Costa (7, 10 & 11), Sacramento (10), San Joaquin (11 & 18), Solano (1), and Yolo (1 & 2) Counties
Congressional Interest	1/Thompson (D), 2/Herger (R), 3/Lungren (R), 7/Miller (D), 10/Garamendi (D), 11/McNerney (D), and 18/Cardoza (D)  Senators Boxer (D) and Feinstein (D)
Non-Federal Sponsor	California Department of Water Resources and Multiple Local Agencies

# SACRAMENTO-SAN JOAQUIN RIVER DELTA & SUISUN MARSH

**USACE PM/PLANNER** Dennis Clark: 916.557.7963  
Brooke Schlenker: 916.557.5299  
Matty Evoy-Mount: 916.557.5299

Email: Dennis.G.Clark@usace.army.mil  
Email: Brooke.E.Schlenker@usace.army.mil  
Email: Matilda.L.Evoy-Mount@usace.army.mil

**PURPOSE** Flood Risk Management

**AUTHORIZATION** Water Supply, Reliability, and Environmental Improvements Act (Public Law (PL) 108-361), Section 103 (f) (3); as amended by the Water Resources Development Act (WRDA) 2007 (PL 110-114), Section 3015; and the Energy and Water Appropriations Act of 2010.

**LOCATION/DESCRIPTION** The study area is located in Sacramento, San Joaquin, Solano, Contra Costa, Alameda, and Yolo counties, California and extends from Sacramento south to the cities of Stockton and Tracy, and west to and including Suisun Bay. The Sacramento-San Joaquin Delta consists of about 740,000 acres of land segregated into some 80 tracts and islands and 1,100 miles of levees. Title I of PL 108-361, the CALFED Bay Delta Authorization Act of 2004 (CALFED Act), provided for Corps participation in the CALFED Program by authorizing the Secretary of the Army to undertake the construction and implementation of levee stability programs or projects for such purposes as flood control, ecosystem restoration, water supply, water conveyance, and water quality as described in the 2000 Record of Decision for the Programmatic Environmental Impact Study/Report on the CALFED Bay-Delta Program. The primary purpose of levee improvement projects is flood risk management, although it is recognized that incidental benefits for other purposes may accrue as a result of levee improvements in the Delta.

**FEDERAL INTEREST** Delta levees protect 500,000 inhabitants, the water supply of 25,000,000 Californians, several Federal navigation/transportation projects, and a \$28B agricultural industry (10% of the nation's output). The Delta is home to over 750 plant and animal species including over 35 species listed under the Endangered Species Act.

**SUMMARIZED FINANCIAL DATA**

<b>Authorized Federal Limit</b>	<b>\$ 196,000,000</b>
<b>FY 08 Appropriations</b>	<b>\$ 4,920,000</b>
<b>FY 09 Appropriations</b>	<b>\$ 4,784,000</b>
<b>FY 10 Appropriations</b>	<b>\$ 4,814,000</b>
<b>FY 11 Appropriations</b>	<b>\$ 598,700</b>
<b>FY 12 Appropriations</b>	<b>\$ 0</b>
<b>FY 13 Appropriations</b>	<b>\$ 0</b>

**PARTNERSHIP FUNDING** Up to \$100,000 is available at full Federal expense to initiate Feasibility Phase activities, including preparing a Preliminary Draft Project Implementation Report (PDPIR), a Project Management Plan (PMP), and to negotiate the Feasibility Cost Share Agreement (FCSA) for each project that proceeds through the program. The cost share between the Corps and a non-Federal sponsor for Feasibility Phase activities in the LSP beyond the initial \$100k is 50/50. The cost share for design and construction is 65% Corps/35% non-federal sponsor.

**FY 10 & 11 ACTIVITIES** The Bethel Island Municipal Improvement District was the first non-Federal sponsor to sign a Feasibility Cost Share Agreement (FCSA) with the Corps on 13 July 2010 for the Bethel Island-Horseshoe Bend Project. The Corps team completed draft Project Management Plans (PMPs) for four additional Levee Stability Program projects, including McCormack-Williamson Tract, Bacon Island, Walnut-Grove, and River Junction, and began development of a PMP and FCSA for Brannan-Andrus Levee Maintenance District. In 2010 a Memorandum of Agreement (MOA) was signed between USACE and DWR, allowing the Corps-DWR to initiate Phase 1 of GIS Flood Contingency Mapping and Emergency Response Planning for the Delta region. Phase 1 was completed in September 2011 and includes: standardized GIS database of Emergency Management Data; Flood Contingency Map Books and large scale wall maps of the Delta region; and an accompanying report documenting the existing framework, existing data, and any potential data gaps.

**FY 12 & 13 ACTIVITIES** The Bethel Island-Horseshoe Bend Project Feasibility Phase Study is currently underway; a completed PIR and initiation of a Project Partnership Agreement is anticipated in FY14. The McCormack-Williamson Tract PMP and FCSA have been approved by the Corps' Headquarters office.

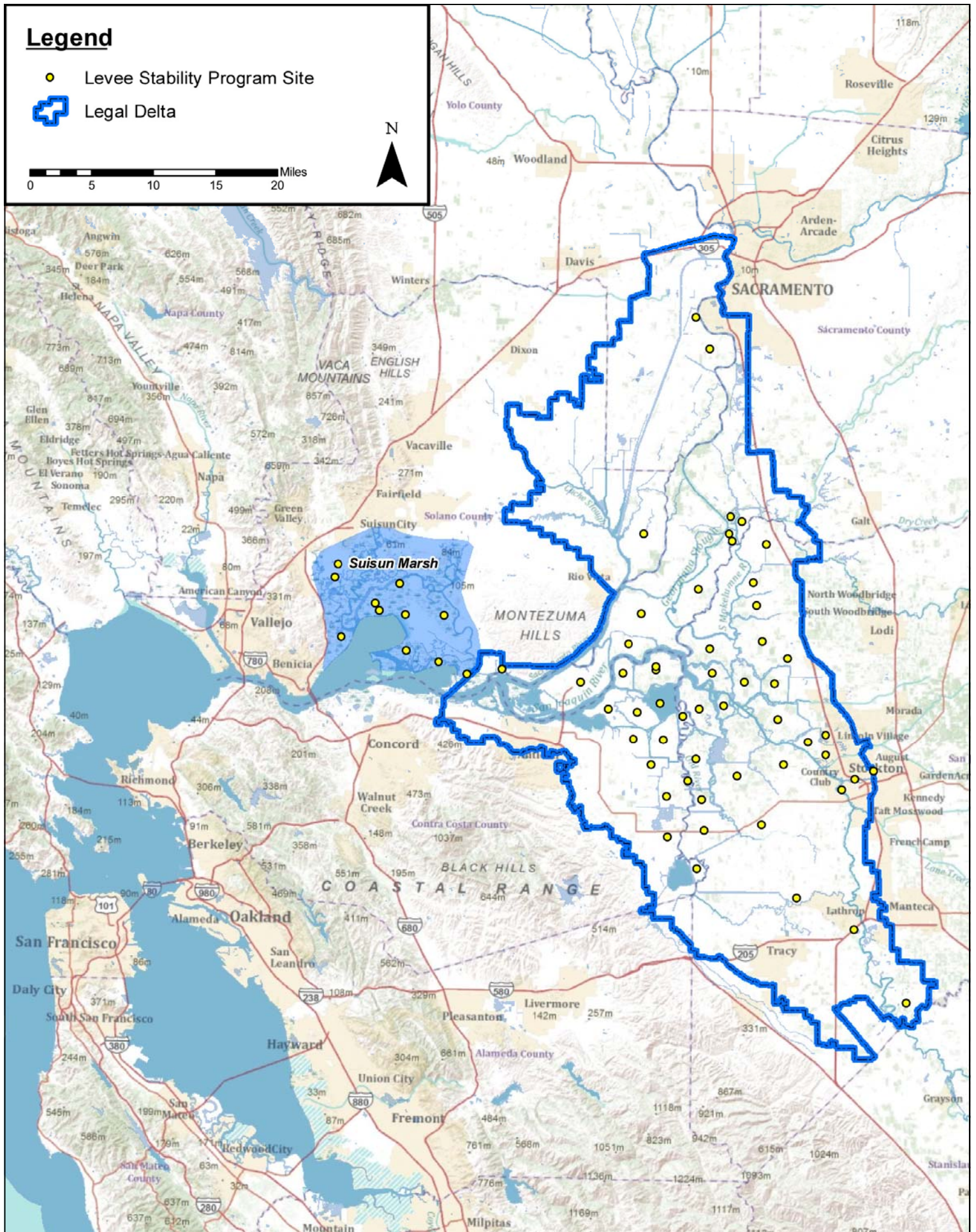
## Legend

● Levee Stability Program Site

Legal Delta

0 5 10 15 20 Miles

N





**San Luis & Delta-Mendota Water Authority**

P.O. Box 2157  
Los Banos, CA 93635  
Phone: (209) 826-9696  
Fax: (209) 826-9698



**State Water Contractors**

1121 L St., Suite 1050  
Sacramento, CA 95814  
Phone: (916) 447-7357  
Fax: (916) 447-2734

March 15, 2013

U.S. Army Corps of Engineers, Sacramento District  
Public Affairs Office  
Attn: Delta Study Scoping  
1325 J Street  
Sacramento, CA 95814

**Subject: Notice of Intent to Prepare an Environmental Impact Statement for the Sacramento-San Joaquin Delta Islands and Levees Feasibility Study**

The San Luis & Delta-Mendota Water Authority (SLDMWA) and State Water Contractors, Inc. (SWC), on behalf of and with each of their member agencies,<sup>1</sup> (herein "Public Water Agencies"), appreciate this opportunity to provide comments on the scope of the environmental analysis to be included in the draft environmental impact statement (DEIS) for the Sacramento-San Joaquin Delta Islands and Levees Feasibility Study (Delta Study). The Delta Study will assess existing and future flood risks in the Delta as well as opportunities for ecosystem restoration and will develop a comprehensive roadmap for the U.S. Army Corps of Engineers' (Corps) involvement in a wide range of resource management needs in the region. The Delta Study will evaluate alternatives to meet the dual study goals of restoring sustainable ecosystem functions and improving flood risk management in the Delta, Suisun Marsh, and adjacent areas.

The Corps is initiating preparation of the DEIS and will serve as the lead agency for compliance with the National Environmental Policy Act (NEPA). The Corps has entered into a Feasibility Cost Share Agreement (FCSA) for preparation of the Delta Study with the Department of Water Resources (DWR), the non-Federal sponsor. This letter contains Public Water Agencies' response to the Notice of Intent (NOI) as entities that would be potentially affected by a long-term strategy for Corps projects in the Delta region.

Specific comments on potential issues for the Corps' consideration and incorporation into the DEIS are listed below:

- The NOI states that Delta Study alternatives may include various combinations of ecosystem restoration and flood-risk management measures designed to meet the study goals. The DEIS for the Delta Study should evaluate the environmental effects of the project's alternatives on water supply, water quality, and aquatic and terrestrial biology, among other resource categories.

---

<sup>1</sup> See Attachment 1 for a description of the SWC and SLDMWA.

March 15, 2013

Page 2

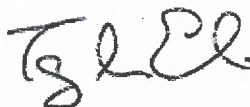
- The DEIS for the Delta Study should be closely coordinated with adopted and on-going planning and policy initiatives in the Delta including:
  - The Bay-Delta Conservation Plan, which considers an integrated water supply and environmental enhancement strategy in the Delta,
  - The DWR Central Valley Integrated Flood Management Study, which identifies opportunities to reduce flood risk and protect environmental values of the region, and
  - The Delta Flood Emergency Preparedness, Response and Recovery Plan, which provides emergency response strategies addressing up to and including catastrophic multiple-island failures from earthquake or flood emergencies.

We appreciate the opportunity to provide input into your scoping process for the Delta Study DEIS. Please include us on the mailing list to receive future notifications about this process. If we can be of further assistance, please contact Brenda Burman at [bburman@mw2o.com](mailto:bburman@mw2o.com) or Greg Zlotnick at [Greg.Zlotnick@sldmwa.org](mailto:Greg.Zlotnick@sldmwa.org).

Sincerely Yours,



Daniel G. Nelson  
Executive Director  
San Luis & Delta-Mendota Water Authority



Terry L. Erlewine  
General Manager  
State Water Contractors

## Attachment 1

The SWC organization is a nonprofit mutual benefit corporation that represents and protects the common interests of its 27 member public agencies in the vital water supplies provided by California's State Water Project ("SWP"). Each of the member agencies of the State Water Contractors holds a contract with the California Department of Water Resources ("DWR") to receive water supplies from the SWP. Collectively, the SWC members deliver water to more than 25 million residents throughout the state and more than 750,000 acres of agricultural lands. SWP water is served from the San Francisco Bay Area, to the San Joaquin Valley and the Central Coast, to Southern California. The SWC's members are: Alameda County Flood Control and Water Conservation District Zone 7; Alameda County Water District; Antelope Valley-East Kern Water Agency; Casitas Municipal Water District; Castaic Lake Water Agency; Central Coastal Water Authority; City of Yuba City; Coachella Valley Water District; County of Kings; Crestline-Lake Arrowhead Water Agency; Desert Water Agency; Dudley Ridge Water District; Empire-West Side Irrigation District; Kern County Water Agency; Littlerock Creek Irrigation District; Metropolitan Water District of Southern California; Mojave Water Agency; Napa County Flood Control and Water Conservation District; Oak Flat Water District; Palmdale Water District; San Bernardino Valley Municipal Water District; San Gabriel Valley Municipal Water District; San Geronio Pass Water Agency; San Luis Obispo County Flood Control & Water Conservation District; Santa Clara Valley Water District; Solano County Water Agency; and Tulare Lake Basin Water Storage District.

The Authority is a joint powers authority, established under California's Joint Exercise of Powers Act. (Gov. Code, § 6500 et seq.) The Authority is comprised of 29 member agencies, 27 of which hold contractual rights to water from the federal Central Valley Project ("CVP"). The Authority member agencies have historically received up to 3,100,000 acre-feet annually of CVP water for the irrigation of highly productive farm land primarily along the San Joaquin Valley's Westside, for municipal and industrial uses, including within California's Silicon Valley, and for publicly and privately managed wetlands situated in the Pacific Flyway. The areas served by the Authority's member agencies span portions of seven counties encompassing about 3,300 square miles, an area roughly the size of Rhode Island and Delaware combined. The Authority's members are: Banta-Carbona Irrigation District; Broadview Water District; Byron Bethany Irrigation District (CVPSA); Central California Irrigation District; City of Tracy; Columbia Canal Company (a Friend); Del Puerto Water District; Eagle Field Water District; Firebaugh Canal Water District; Fresno Slough Water District; Grassland Water District; Henry Miller Reclamation District #2131; James Irrigation District; Laguna Water District; Mercy Springs Water District; Oro Loma Water District; Pacheco Water District; Pajaro Valley Water Management Agency; Panoche Water District; Patterson Irrigation District; Pleasant Valley Water District; Reclamation District 1606; San Benito County Water District; San Luis Water District; Santa Clara Valley Water District; Tranquillity Irrigation District; Turner Island Water District; West Side Irrigation District; West Stanislaus Irrigation District; and Westlands Water District.



US Army Corps  
of Engineers  
Sacramento District

## Public Comment Sheet

NAME: ROGENE REYNOLDS PHONE: (209) 992-8090  
ADDRESS: 4444 N. VINE RD. STOCKTON CA 95206  
E-MAIL: sail240@~~email~~clearwine.net

### COMMENT/QUESTION:

In the So. Delta - we have a  
serious siltation problem in our  
channels. Redging would  
be an improvement! Silted channels  
increase flood risk.

Also: This program should be  
brought to the South Delta!



US Army Corps  
of Engineers  
Sacramento District

# Public Comment Sheet

NAME: Mary PHONE: \_\_\_\_\_

ADDRESS: \_\_\_\_\_

E-MAIL: \_\_\_\_\_

COMMENT/QUESTION:

p 33 - Sac Submen RR no longer in place

- being converted to trail

RD 0557 - Pearson District Not "Pierson"

Toppen Van Lohren sails



US Army Corps  
of Engineers  
Sacramento District

# Public Comment Sheet

NAME: Gilbert Labrie PHONE: \_\_\_\_\_

ADDRESS: \_\_\_\_\_

E-MAIL: \_\_\_\_\_

COMMENT/QUESTION:

This study needs to address  
the process of pre-meeting to unify  
the federal interests in permitting. This  
will allow ongoing maintenance, improvement,  
restoration of critical structures and  
facilitate Delta as Place



US Army Corps  
of Engineers  
Sacramento District

## Public Comment Sheet

NAME: Debbu Elliott PHONE: (916) 775-4043  
ADDRESS: 12236 Hwy 160  
E-MAIL: delliott@cutlink.net

COMMENT/QUESTION:

page 35 of map Book  
no fire station on Holland Rd -  
it is in Clarksburg



US Army Corps  
of Engineers  
Sacramento District

## Public Comment Sheet

NAME: Kristal Fadtke PHONE: 916-375-4994  
ADDRESS: 1450 Halyard Dr. Suite 6, West Sacramento, CA  
E-MAIL: kmdavis@deltaconservancy.ca.gov

### COMMENT/QUESTION:

Will the Corps engage stakeholders in review of alternatives prior to the <sup>public</sup> release of the feasibility report / draft EIS?  
Earlier engagement of Delta stakeholders can help ensure the feasibility study is consistent & complementary to Delta planning efforts and helps address stakeholder needs in the Delta