

Project Overview

The American River Common Features 2016 Project is a \$1.8 billion cooperative effort between the U.S. Army Corps of Engineers, Central Valley Flood Protection Board, California Department of Water Resources, and the Sacramento Area Flood Control Agency (SAFCA).

This project serves as one piece of the larger plan to help the Sacramento region achieve a 200-year level of protection, meaning a one-in-200 chance of flooding in any given year.

Full upfront funding for our project, provided through the Bipartisan Budget Act of 2018, provided the unprecedented opportunity to proactively address limitations of the existing flood risk management system and, as a result, lower the flood risk for millions of people who live, work and play in the Sacramento region.

The ARCF 2016 project is to reduce the risk of flooding on the Lower American River and the eastside of the Sacramento River by addressing seepage, stability, overtopping, and erosion risks. Generally, the authorized project's features includes up to:

- 13 Miles of Cutoff Walls
- 21 Miles of Bank Protection
 - 11 miles on the American River
 - 10 miles on the Sacramento River
- 5 Miles of Levee Stabilization
- 5 Miles of Levee Raises
- Widen Sacramento Weir and Bypass by approximately 1,500 feet

Project Partners



Central Valley Flood Protection Board
California Dept. of Water Resources
Sacramento Area Flood Control Agency



Contact

**U.S. Army Corps of Engineers
Sacramento District**

(916) 557-5100

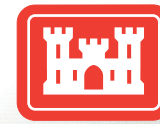
spk-pao@usace.army.mil

For More Information

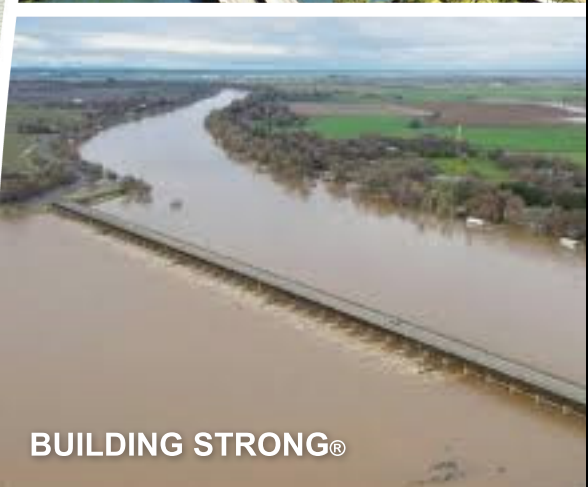
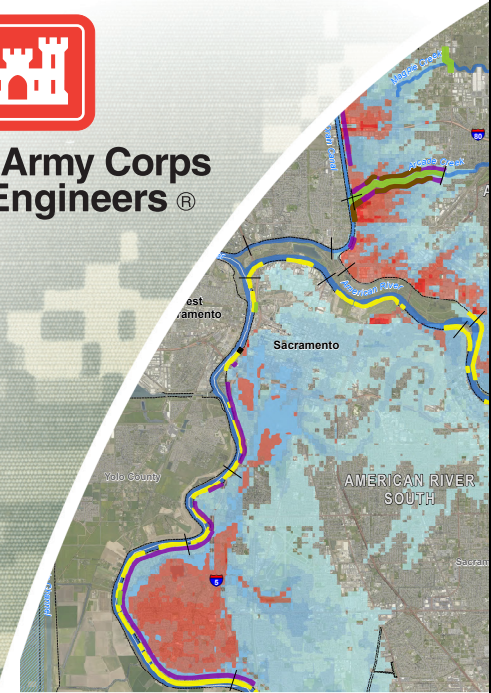
Project Webpage
www.sacleveeupgrades.com

Sacramento District Homepage
www.spk.usace.army.mil

U.S. Army Corps of Engineers Homepage
www.usace.army.mil



**US Army Corps
of Engineers®**



BUILDING STRONG®

SACRAMENTO LEVEE UPGRADES

Primary Flood Risk Factors

The authorized project includes improvement measures to address seepage, slope stability, and overtopping concerns identified for the Sacramento River levee, Natomas East Main Drainage Canal (NEMDC), Arcade Creek, and Magpie Creek.

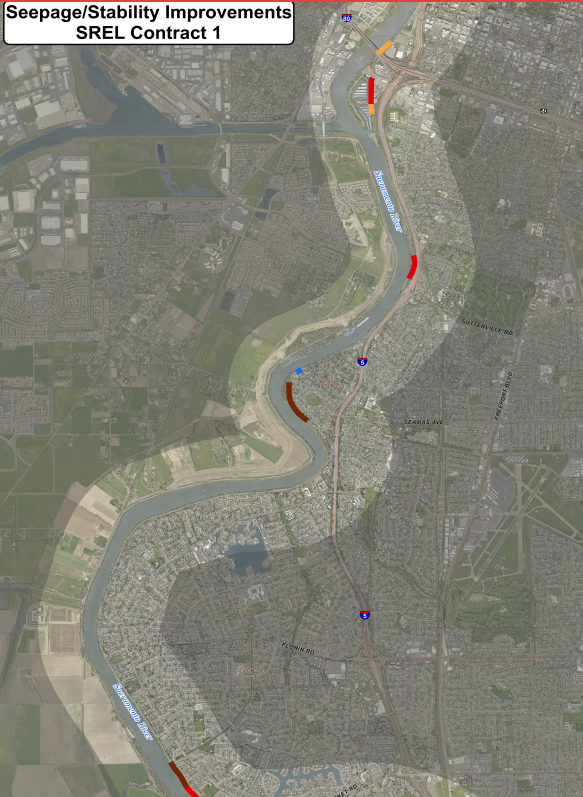
Seepage and stability improvements are typically addressed by the installation of a cutoff wall, seepage berm, or relief wells.

Levee improvements to address overtopping could include floodwalls, levee raises, and a detention basin.

Levee improvements to address erosion are typically protection in the form of a launchable trench or on the bank itself.

In 2019, the Sacramento Area Flood Control Agency (SAFCA) completed construction to address the seepage and stability concerns along Arcade Creek’s north and south levees as well as the NEMDC east levee to address identified levee seepage and embankment and foundation stability problems.

In January 2020, the Corps completed construction on a 400-foot-long seepage berm on the landside levee of the Sacramento River East Levee, adjacent to Front St, to address seepage issues.



Sacramento River East Levee Contract 1

A \$64 million contract was awarded in February 2020 to construct approximately 3 miles of levee improvements to include a combination of seepage cutoff walls and seepage berms at 5 locations along the Sacramento River East Levee (SREL). Levee improvements extend from just south of Old Sacramento to Freeport Regional Water Facility in the Pocket.

A cutoff wall is constructed deep through the levee crown to address seepage concerns. Degradation of the levee crown is necessary to create a large enough working platform (approximately 50 feet) and to reduce the risk of hydraulically fracturing the levee embankment from the insertion of slurry fluids.

Site preparation was completed in January 2020, and levee improvements are scheduled to continue through December 2020.

What’s Next?

The remaining Sacramento River levee improvements are anticipated to be broken into multiple construction packages.

SREL Contract 2: Three-mile combination of cutoff walls and relief wells. Construction is anticipated in spring/summer 2021.

SREL Contract 3: Two-mile combination of cutoff wall construction and soil borings for geotechnical investigations. Work is anticipated in spring/summer 2022.

SREL Contract 4: Combination of seepage cutoff walls, flood walls, and levee raise along up to 5.5 miles of the Sacramento River East Levee. Construction is anticipated in spring/summer 2023.

Sacramento River Erosion Contract 1: Consists of a repair at river mile 55.2L directly south of the Westin hotel. This is an approximately 1,150-foot-long site that is scheduled for construction in 2021.

Sacramento River Erosion Contracts 2-4: Additional erosion repair contracts are being evaluated and anticipated to be constructed beginning in 2022. The scope and details of these repairs should be known by summer 2020.

We intend to keep the lines of communication open through public meetings, newsletters and other correspondence, media interviews, industry days, and posting the latest information on our website www.sacleveeupgrades.com.

