

AMERICAN RIVER COMMON FEATURES 2016 SACRAMENTO RIVER EAST LEVEE (SREL), CONTRACT 1 PROJECT OVERVIEW

Nikole May
Senior Project Manager

Hans Carota
Technical Lead

12 March 2020

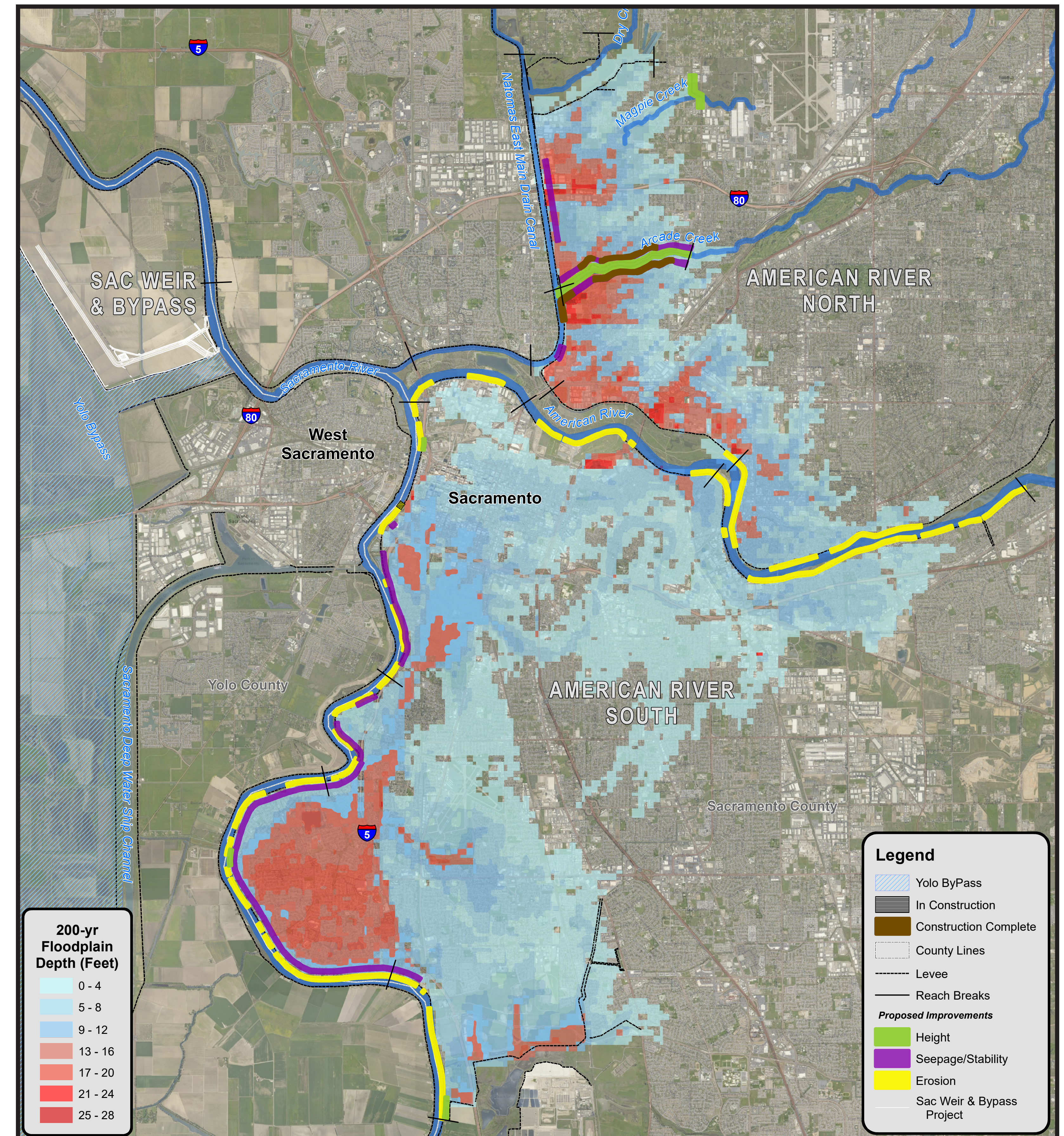


US Army Corps
of Engineers®

Project Overview

Sacramento Area Levee Improvements

- Together, the U.S. Army Corps of Engineers, State of California, and the Sacramento Area Flood Control Agency (SAFCA) have made tremendous progress in reducing flood risk for Sacramento – perhaps America’s most at-risk city for severe flooding.
- Modernizing Sacramento’s aging flood infrastructure still requires a lot of work. The authorized project includes approx. \$1.8 billion in further improvements to modernize Sacramento’s flood infrastructure so it reliably and sustainably reduces Sacramento’s flood risk for generations to come.
- The authorized project includes up to:
 - 13 miles of cutoff walls
 - 21 miles of bank protection
 - 5 miles of levee stabilization
 - 5 miles of levee raises
 - Widening the Sacramento Weir by 1,500 feet
- The Corps, Central Valley Flood Protection Board, California Department of Water Resources, and SAFCA have a coordinated plan that works to achieve the goals of each partner.
- Tonight’s meeting is to discuss how we will be executing the Sacramento River East Levee Contract 1 construction contract, which was awarded to Maloney Odin Joint Venture of Novato, California, on February 14, 2020. This project will be constructing approximately three miles of levee improvements beginning as soon as March, and continuing through the end of 2020.



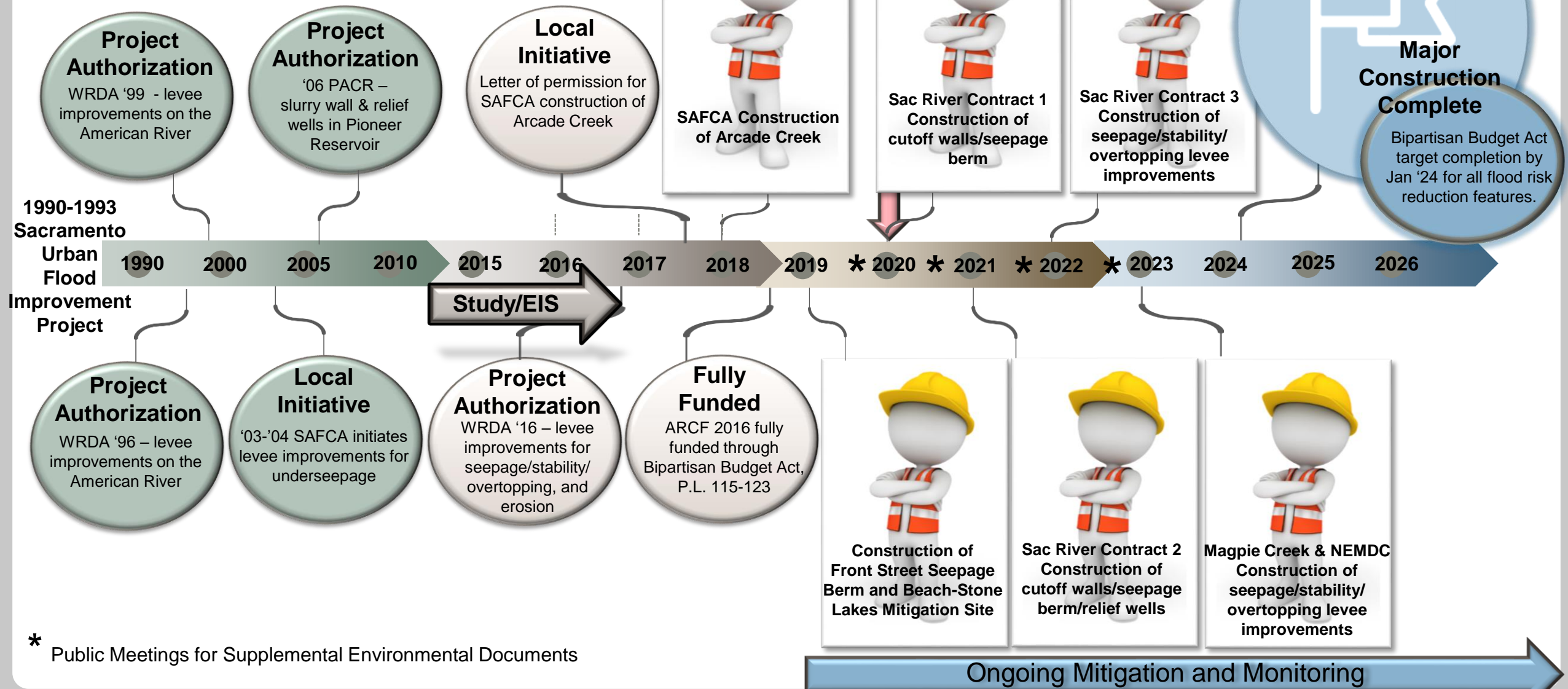


TIMELINE: ARCF 2016

Seepage/Stability/Overtopping

TODAY – Sac River Contract 1
Construction Update

3





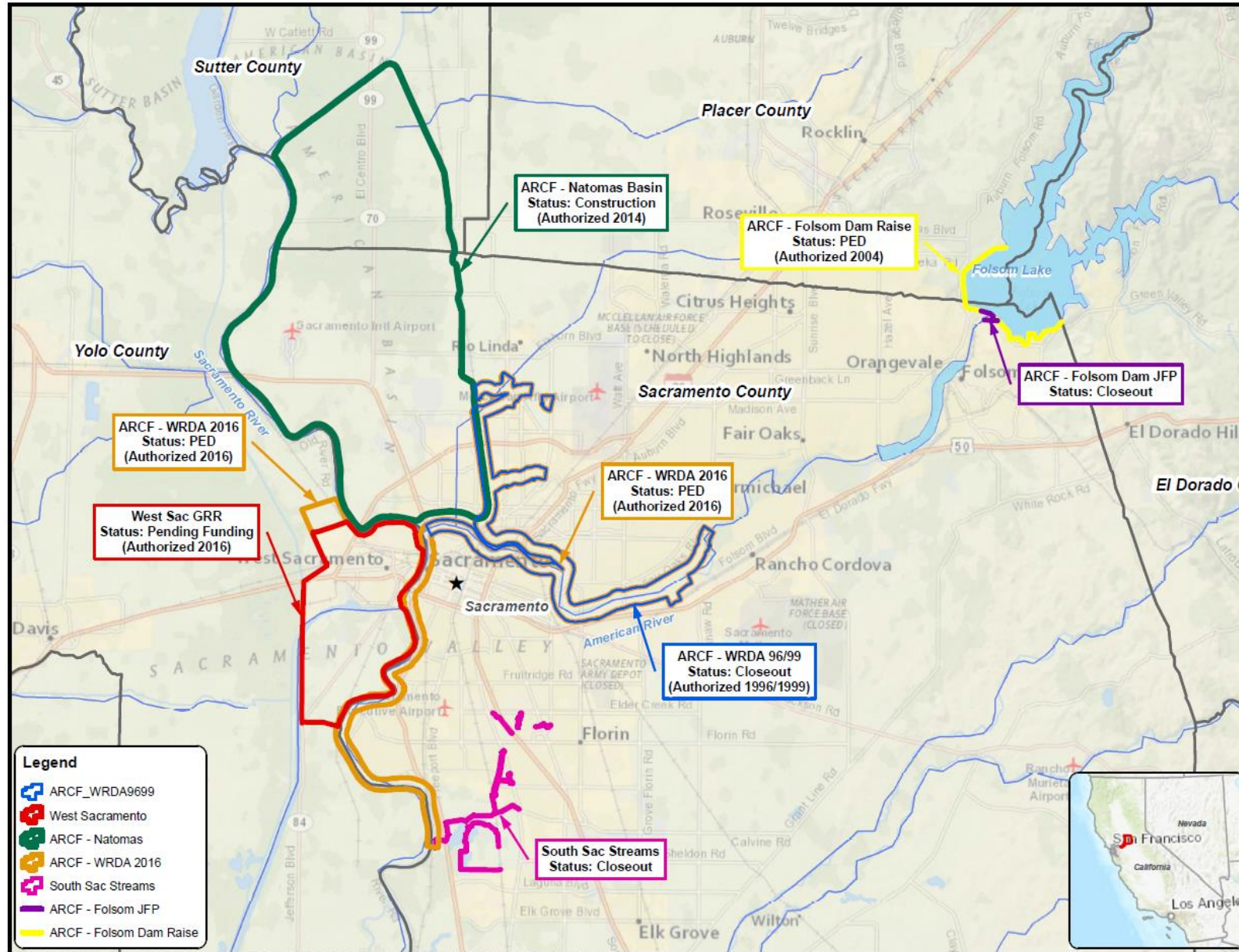
AGENDA



- System Overview
- ARCF 2016 Overview
 - Project Partners
 - Project Progress
- SREL C1 Contract Overview
 - Technical Overview
 - Haul Routes/Access Points
 - Alternative Bike Routes
 - Impacts
 - Schedule
- Contact Information



SYSTEM OVERVIEW





PROJECT PARTNERS



Federal Government



**US Army Corps
of Engineers®**

State Government



Central Valley
Flood Protection
Board



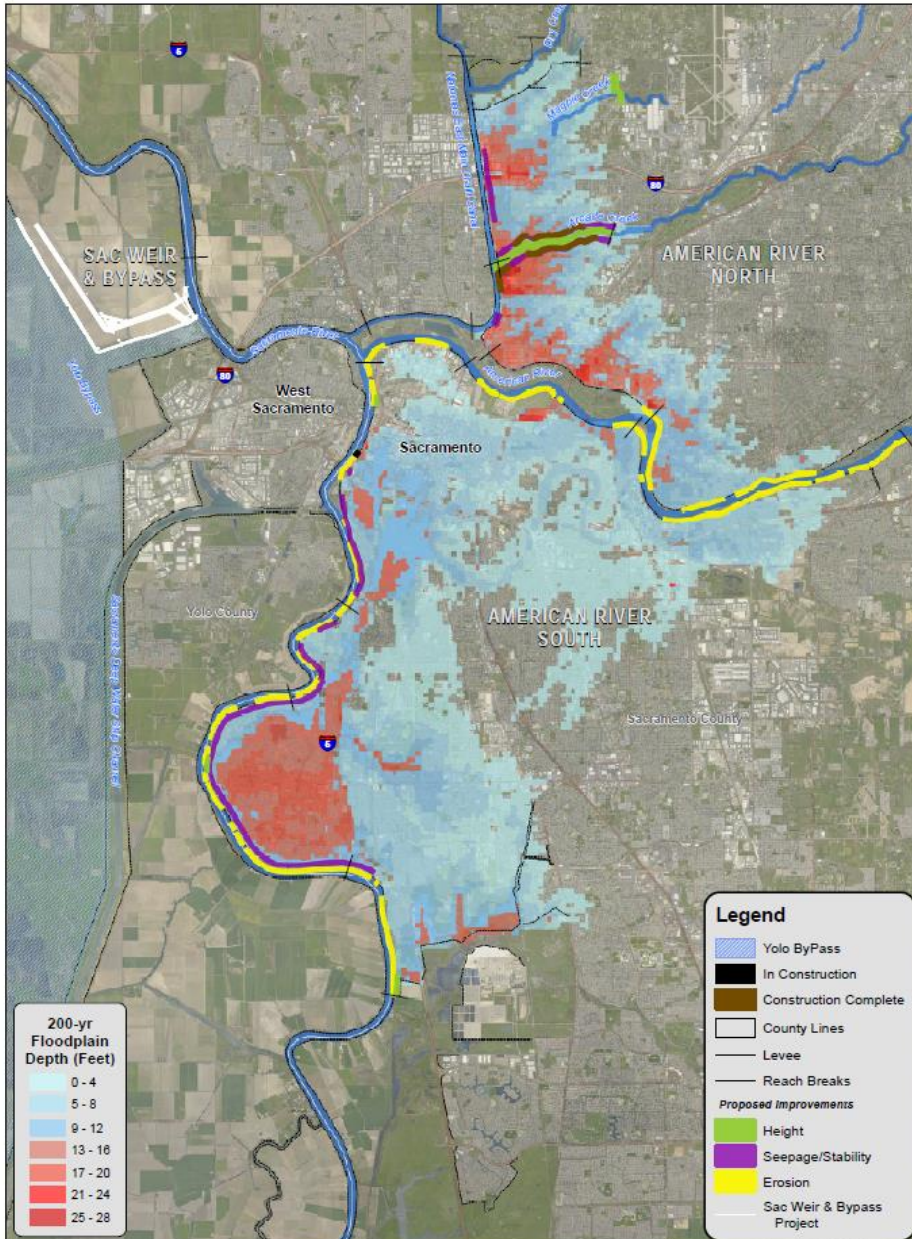
Department of
Water
Resources

Local Government





AMERICAN RIVER COMMON FEATURES (ARCF) 2016



SUPPLEMENTAL TARGET JAN 2024

Authorized Plan

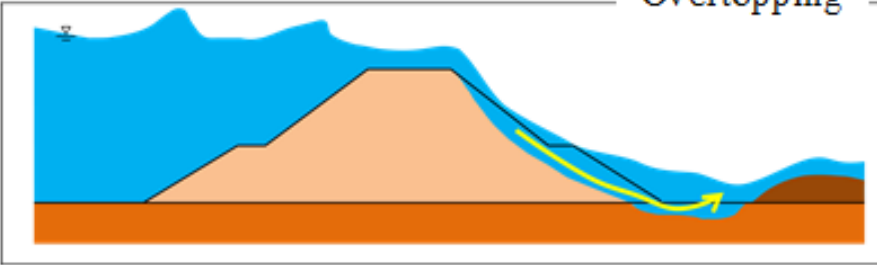
Features	
North Area Streams Seepage	4 miles
Sacramento River Seepage	9 miles
American River Erosion	11 miles
Sacramento River Erosion	10 miles
Levee Stabilization	5 miles
Levee raises	5 miles
Widen Sacramento Weir and Bypass	1500 feet
Reduces Risk	500,000 people
	125,000 structures
	\$62 billion

CAUSES OF LEVEE FAILURE

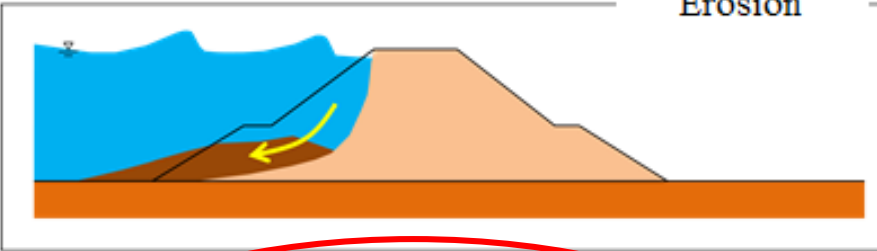


Image courtesy of PWRI Web Magazine

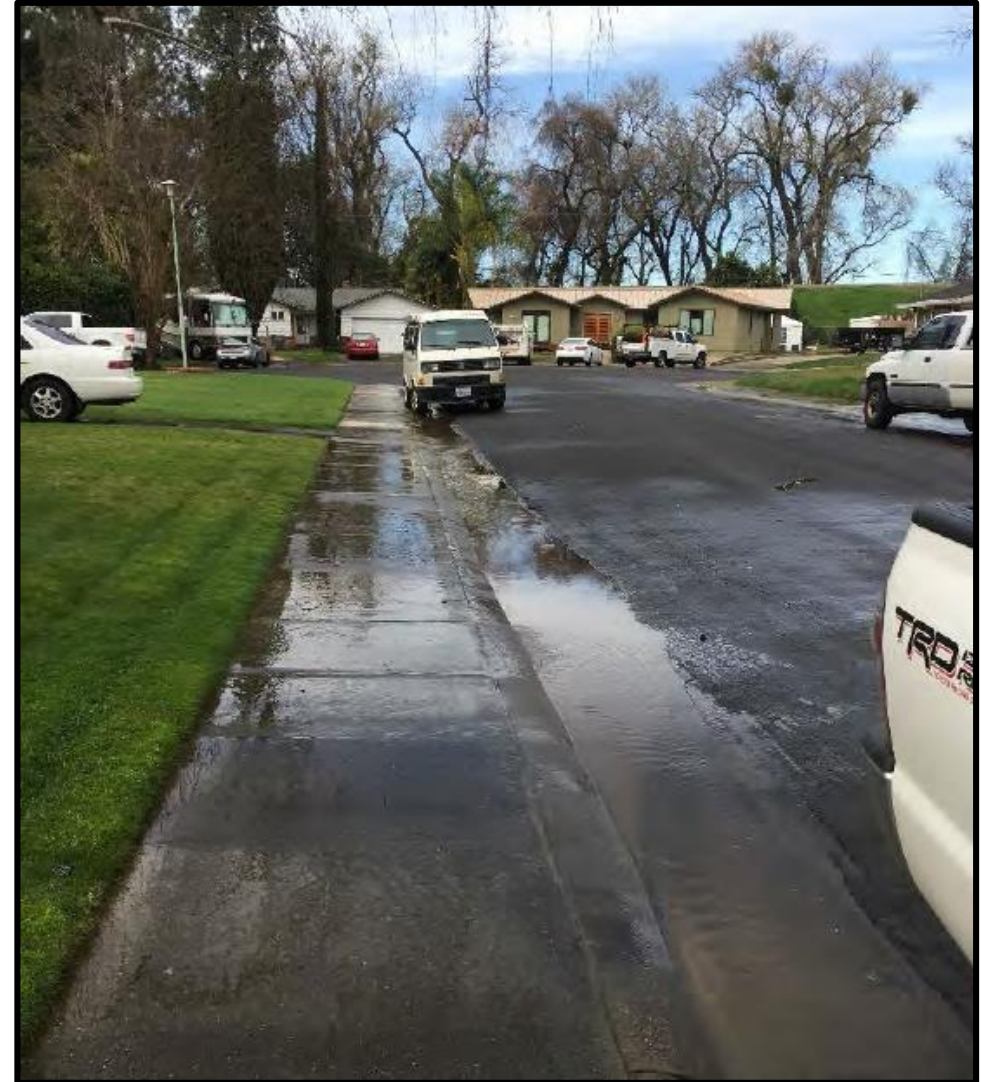
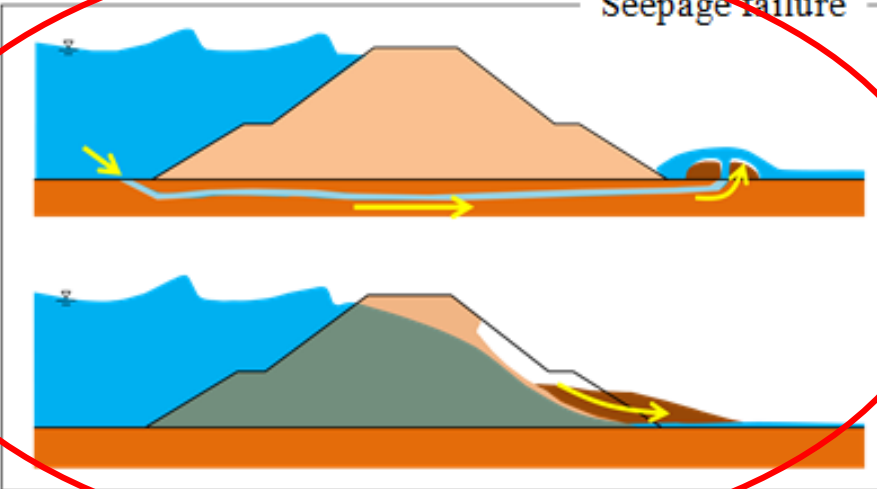
Overtopping



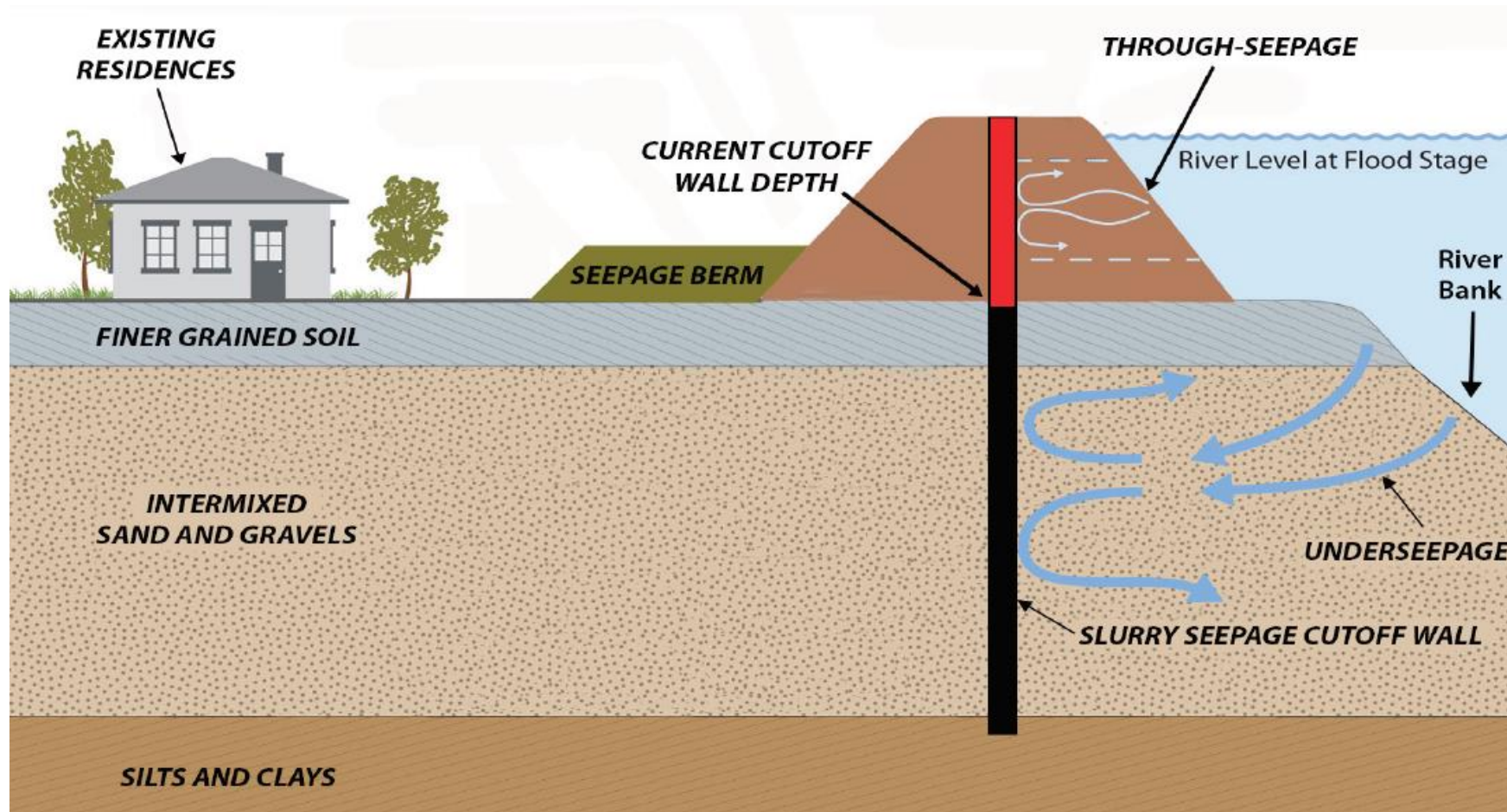
Erosion



Seepage failure



SEEPAGE ISSUES ADDRESSED





SACRAMENTO RIVER EAST LEVEE C1 OVERVIEW

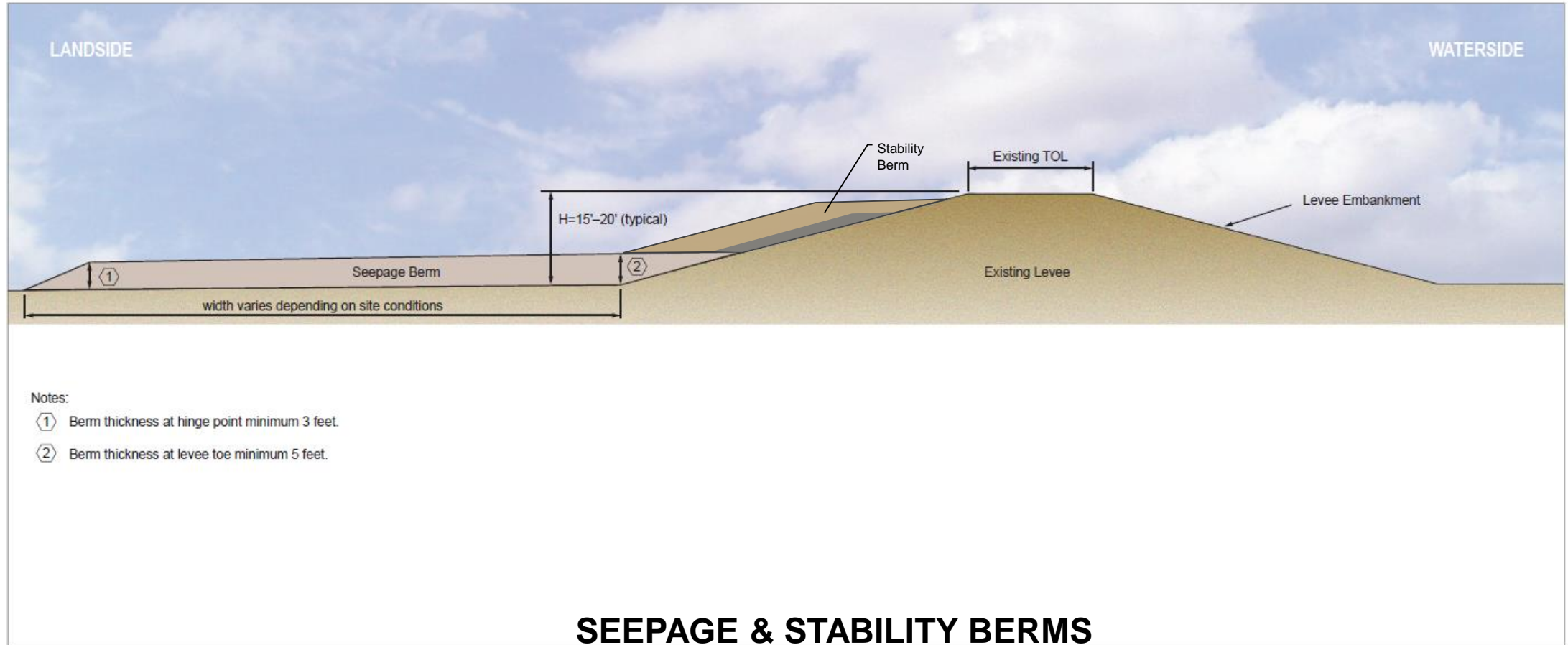


MARCH – DECEMBER 2020

SACRAMENTO RIVER EAST LEVEE, CONTRACT 1

Features	
Seepage & Stability Berms	Approximately 1,000 feet
Cutoff Wall	Approximately 13,900 feet (2.6 miles)

SEEPAGE & STABILITY BERMS



Source: GEI 2018

Exhibit: Seepage Berm Cross Section (Typical)

CONTRACT 1 – MILLER PARK AREA



APRIL – DECEMBER 2020

SACRAMENTO RIVER EAST LEVEE, CONTRACT 1

Features	
Drained Stability Berm	550 feet
Seepage Berm	527 feet
Cutoff Wall	950 feet
Staging Area	Miller Park Overflow Parking Lot; Front Street
Access Points	4



CONTRACT 1 – LITTLE POCKET AREA



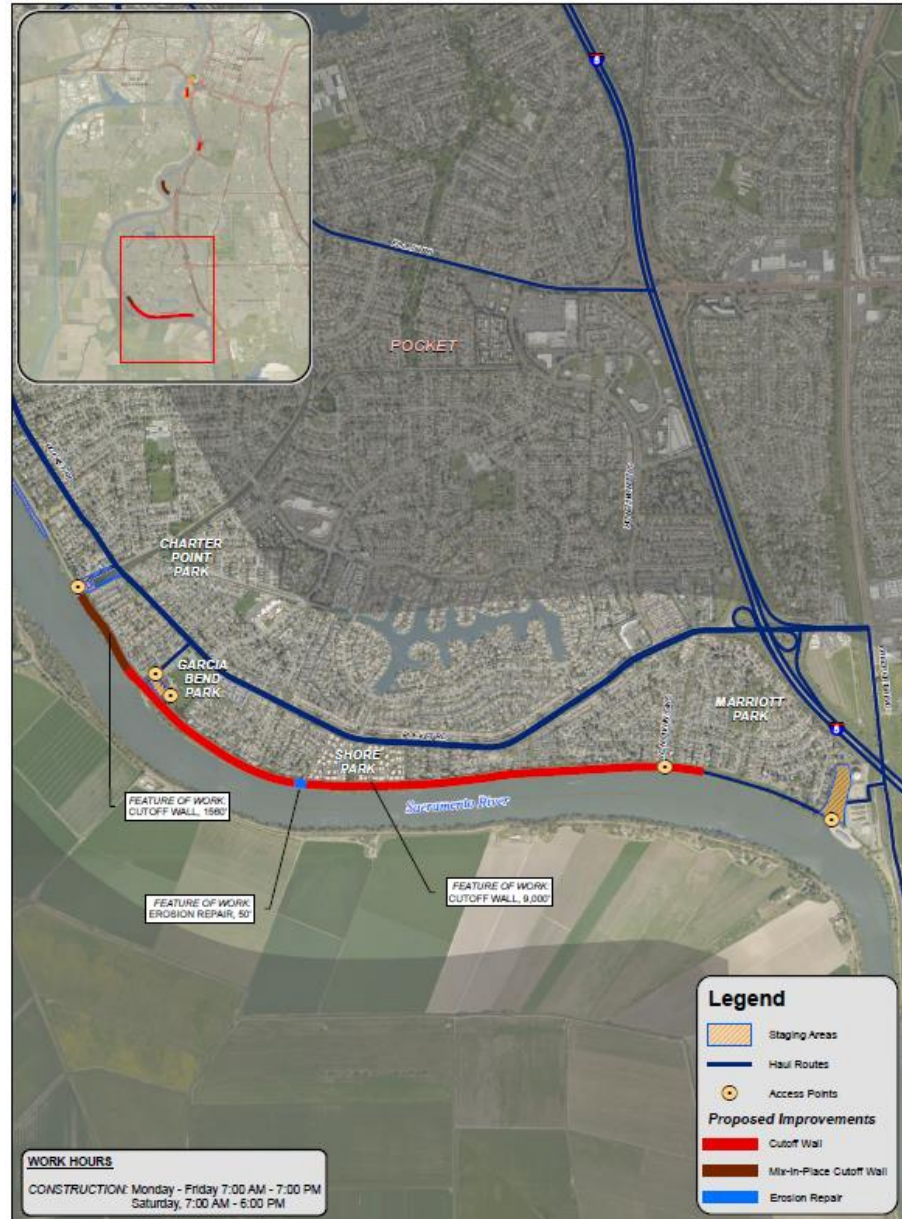
APRIL – SEPTEMBER 2020

SACRAMENTO RIVER EAST LEVEE, CONTRACT 1

Features	
Conventional Cutoff Wall	700 feet
DMM Cutoff Wall	1790 feet
Erosion Repair	30 feet
Staging Area	Waterside of Levee; Entrance to levee crown at the western end of Sutterville Rd
Access Points	4



CONTRACT 1 – BIG POCKET AREA

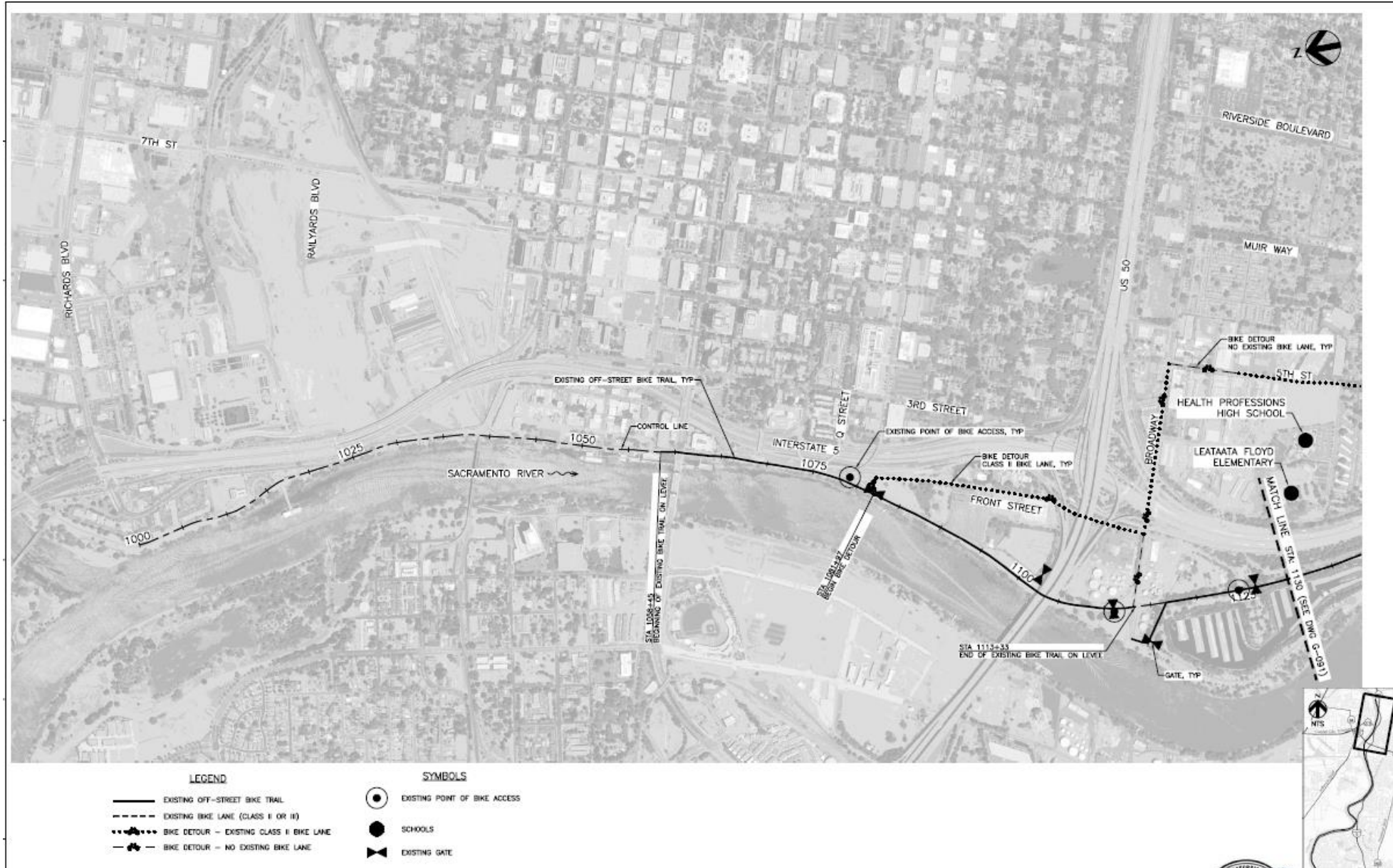


MARCH – SEPTEMBER 2020

SACRAMENTO RIVER EAST LEVEE, CONTRACT 1

Features	
Conventional Cutoff Wall	9,280 feet
DMM Cutoff Wall	1,560 feet
Erosion Repair	50 feet
Staging Area	Garcia Bend Park; Freeport Regional Water Authority; Sump 132
Access Points	5

PROPOSED ALTERNATE BIKE ROUTE



IMPACTS



Biking

Pocket levee bike trail from Miller Park to Sutterville Rd. – closed from April 2020 to October 2020

South Pocket trail from Garcia Bend to Freeport Intake – closed from March 2020 to October 2020

Boating & Fishing

Miller Park:
Marina – After Labor day – working with contractor
Boat Launch – No closure anticipated

Garcia Bend Boat Launch – closed from March 23, 2020 – January 2021

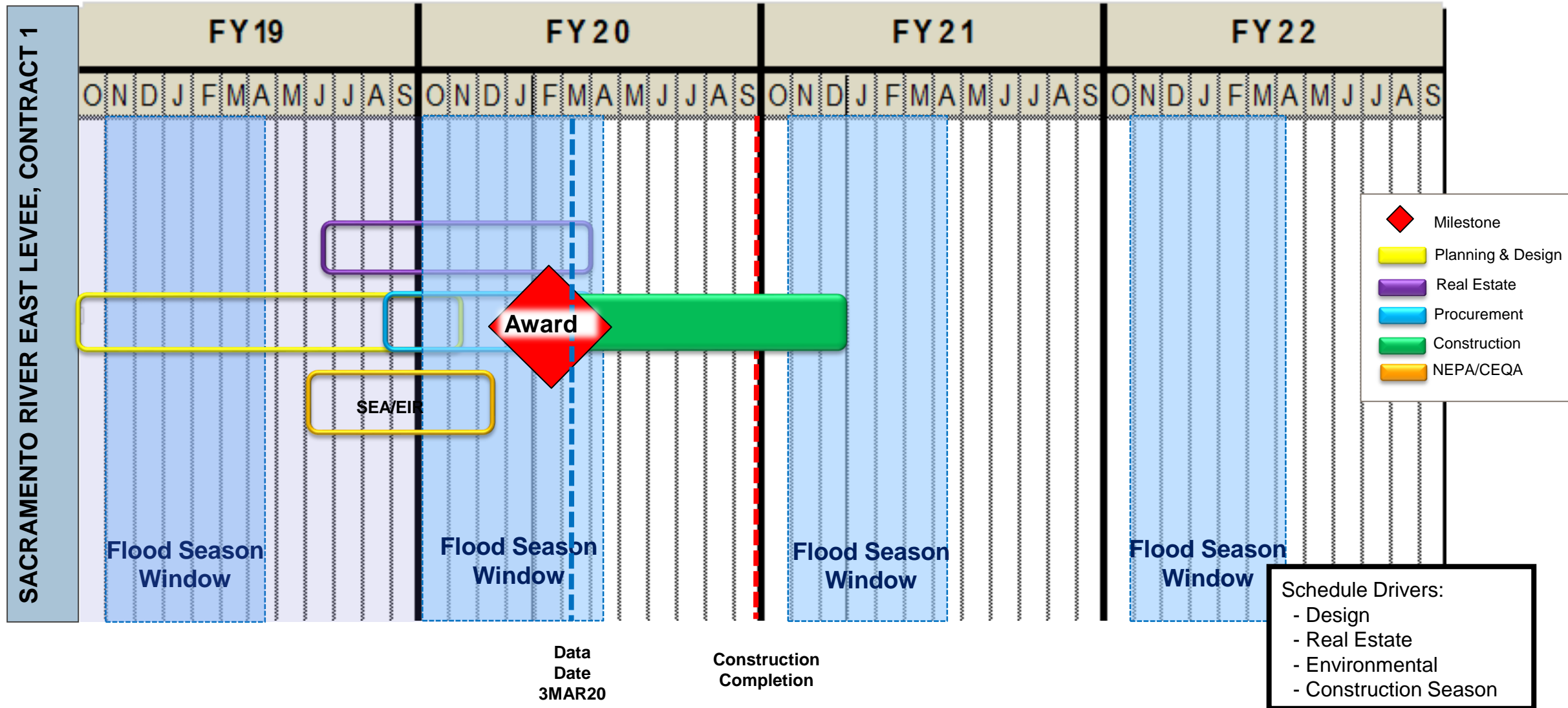
Access

Garcia Bend Back Parking Lot – closed from March 23, 2020 – January 2021





SACRAMENTO RIVER EAST LEVEE C1 SCHEDULE





Submit Questions to spk-pao@usace.army.mil



- *This is an exciting opportunity*
- *You are a part of it*
- *There will be inconvenience*
- *We will mitigate and try to minimize*
- *We will be transparent*
- *We will be honest*
- *We will keep communication lines open*

www.sacleveeupgrades.com

**U.S. Army Corps of Engineers
Sacramento District**

(916) 557-5100

spk-pao@usace.army.mil

