



Sac River Erosion Contract 2 Site 3 Vegetation



American River Common Features 2016 Sacramento River Levees Monthly Update

JULY 2024

Highlights (last 30 days)

Sacramento River Erosion (SRE): Contract 2 Season 2 has begun. Season 2 consists of erosion control work at Sites 1, 4, 5 and the remainder of 6 (see map on the next page). While this may sound like a lot, by volume about 2/3rds of Contract 2 was built last year.

Contract 4 will begin in earnest towards the end of July.

Sacramento River East Levee (SREL): Contract 3 is complete. Contract 4 construction is complete and USACE has begun performing testing on the Cutoff wall. The Contractor is expected to be completely demobilized by August 2024.

Looking Ahead (next 30+ days)

What can I expect?

SRE Sacramento River Erosion

Mobilization for work at Contract 2 Sites 1, 4, and 5 (see the map on the next page). Work will mostly be completed by barge. However, the work around Pioneer Bridge must be accessed from land (an area near Pioneer Landing Park (1900 Front Street). The plan is that the contractor will install a temporary bridge over the California Railroad Museum's recreational track to enable the conveyance of equipment to the project site. The contractor and State Parks (the entity that owns the railroad) will be in coordination and project work is not expected to interfere with Railroad Museum train rides.

Contract 4 work (just downstream of Contract 1, which is just downstream of the Westin Hotel approaching Chicory Bend) will begin towards the end of July. You will notice a barge conveying materials to the site, as well as the installation of temporary field trailers for the Corps and its Contractor.

Hydroseeding and irrigation on Contract 1 and Contract 2 Season 1 Sites (2, 3 and 6a) will begin and continue through the summer with native plants, shrubs and tree plantings to occur in October.

SREL Seepage, Stability, and Overtopping

Garcia Bend Park will open late July 2024. The contractor will be performing site clean-up through July 2024 on the remaining portions of the project.

Question of the Month

Why use a tug and barge to place quarry stone on a levee?

To minimize noise and vibration from heavy equipment operation and to reduce road traffic in and around adjacent neighborhoods. Also, it is a more environmentally friendly method because it reduces the amount of heavy equipment impacts to the levee crown and landward community.

Information Resources:

Project Webpage:

www.sacleveeupgrades.com



Sacramento District Homepage:

www.spk.usace.army.mil

Contact Information:

For questions or concerns, please contact our Public Affairs Office at
916-557-5100

spk-pao@usace.army.mil

Upcoming Milestones

Seepage/Stability/ Overtopping

SREL Contract 4

Construction
April 2023 - June 2024

SREL Contract 5

Construction :
2026

Erosion

Contract 2

Construction
July 2023—October 2024

Contract 3

Construction Contract Award
Anticipated January/February
2025

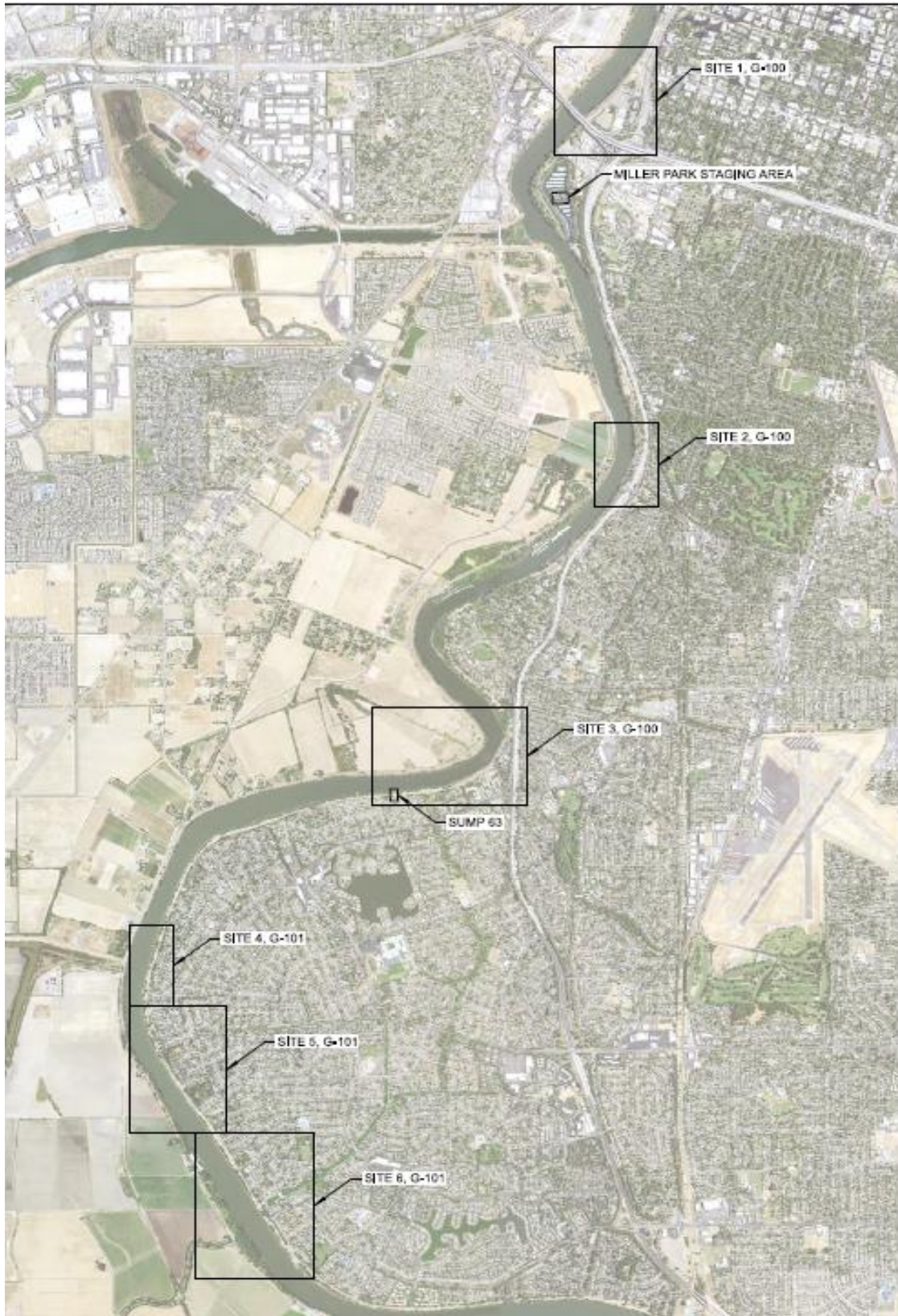
Contract 4

Construction
July 2024—October 2024

Additional information can be found on
our project web page at
www.sacleveeupgrades.com

*All Dates Subject to Change

Erosion Contract 2 Construction Map



Erosion C4 Construction Map

