



American River Common Features 2016 Sacramento River Levees Monthly Update

JUNE 2024

Highlights (last 30 days)

Sacramento River Erosion (SRE): Contract 2 Season 2 and Contract 4 are on track for 2024 construction! An informational public pre-construction meeting was held on May 23, 2024 to address engineering details, environmental and construction impacts and what the Corps and its non-federal partners are doing to mitigate said impacts. The slide deck and a copy of the recording are available at our project webpage.

Sacramento River East Levee (SREL): Contract 3 is complete. Contract 4 construction is complete and USACE has begun performing testing on the Cutoff wall. The Contractor is expected to be demobilized completely by August 2024.

Looking Ahead (next 30+ days)

What can I expect?

SRE Sacramento River Erosion

Mobilization for work at Contract 2 Sites 1, 4 and 5 (see the map on the next page). A few trees will be cut at Site 1 to make way for the revetment work around the Pioneer Bridge. Work will mostly be completed by barge. However the work around Pioneer Bridge must be accessed from land (an area near Pioneer Landing Park (1900 Front Street). The plan is that the contractor will install a temporary bridge over the California Railroad Museum's recreational track to enable the conveyance of equipment to the project site. The contractor and State Parks (the entity that technically owns the railroad) will be in coordination and project work is not expected to interfere with Railroad Museum train rides.

SREL Seepage, Stability, and Overtopping

Garcia Bend Park will remain unavailable for public use through July 2024 due to restoration of parking lot. USACE is currently performing testing on the remaining portions of the Cutoff wall and the Contractor will be performing site clean-up through June 2024.

Question of the Month

Terms like rip-rap, bank stability and revetment installation are often used synonymously. While they can be similar they do not technically mean the same thing. What do the terms rip-rap, bank stability and revetment mean then?

Revetments are sloping structures built on embankments, shorelines, or in front of sea walls to absorb and dissipate the energy of waves and water. They can be used to protect against erosion caused by wave action, storm surge, and currents, or to stabilize river banks and hold rivers in their desired alignment. Revetments can also help prevent damage during periods of heavy seasonal rains or floods. Revetment can be concrete (like the previous concrete mattress at Contract 2, Site 2 (completed last year)). It can also be asphalt, sandbags or other material.

Rip rap (also known as shot-rock, rock armor, or rubble) is a layer of large stones, cobbles or boulders that protect soil from erosion.

Bank Stability is one of the aspects the ARCF16 project intends to achieve by the systemic and strategic installation of cutoff walls and erosion control at the most risk prone sites along the east bank of the Sacramento River.

Information Resources:

Project Webpage:

www.sacleveeupgrades.com



Sacramento District Homepage:

www.spk.usace.army.mil

Contact Information:

For questions or concerns, please contact our Public Affairs Office at
916-557-5100

spk-pao@usace.army.mil

Upcoming Milestones

Seepage/Stability/ Overtopping

SREL Contract 4

Construction
April 2023 - June 2024

SREL Contract 5

Construction :
2026

Erosion

Contract 2

Construction
July 2023—October 2024

Contract 3

Construction Contract Award
Anticipated January/February
2025

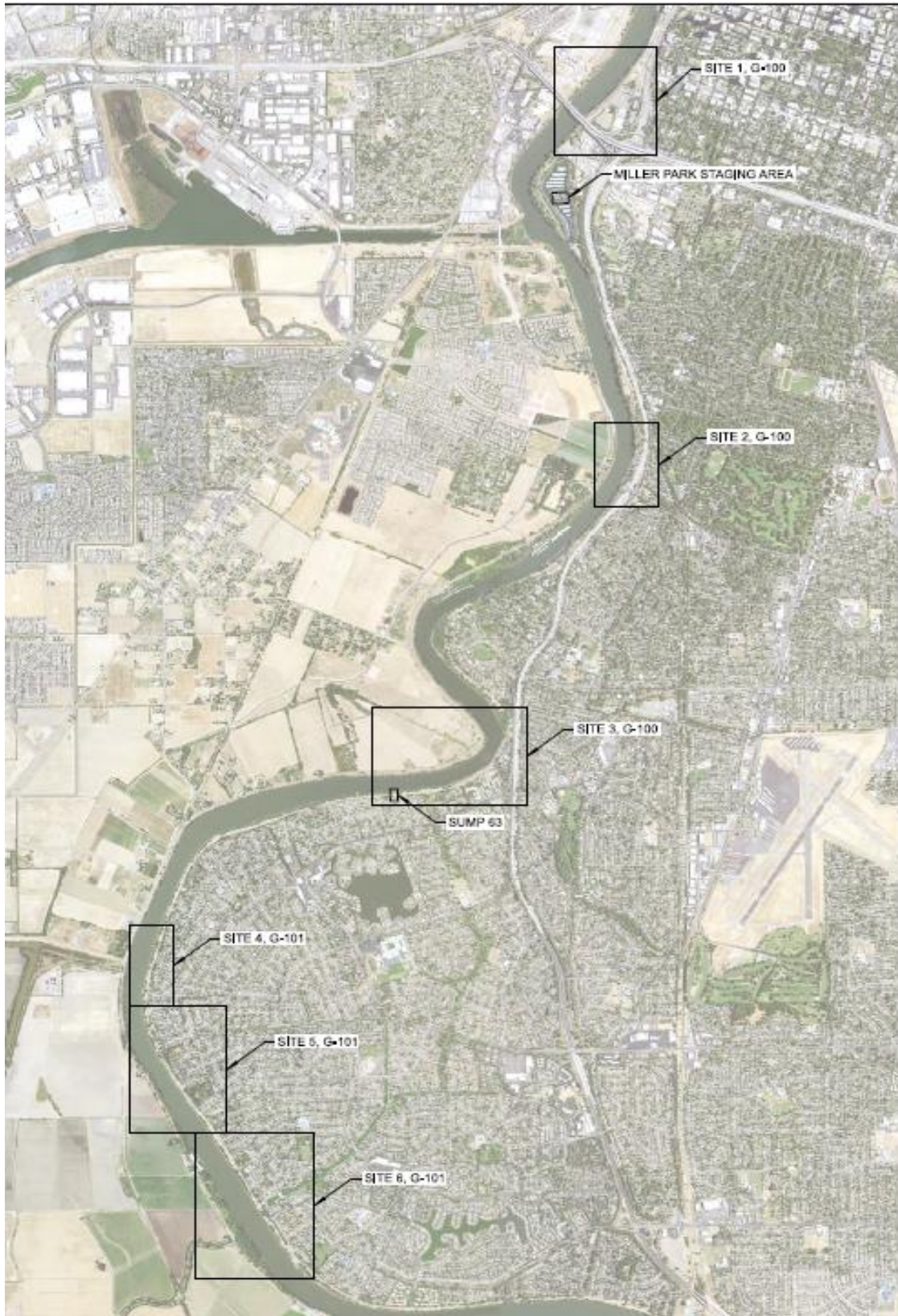
Contract 4

Construction
July 2024—October 2024

Additional information can be found on
our project web page at
www.sacleveeupgrades.com

*All Dates Subject to Change

Erosion Contract 2 Construction Map



Erosion C4 Construction Map

