



# American River Common Features 2016 Sacramento River Levees Monthly Update

APR 2024

## Highlights (last 30 days)

**Sacramento River Erosion (SRE):** Contract 2 Season 2 and Contract 4 are on track for 2024 construction! An informational pre-construction meeting will be scheduled (likely in May or early June) to address engineering details, environmental and construction impacts and what USACE and its non-federal partners are doing to mitigate said impacts (similar to pre-construction meetings held last year in preparation for Contract 2 Season 1 and SREL C4).

**Sacramento River East Levee (SREL):** Contract 3 is complete. Contract 4 is 95% complete and will continue through June 2024. Jet grout work is expected to be completed by mid-April 2024. Testing and clean up work is expected to be completed by end of June 2024.

## Looking Ahead (next 30+ days)

### What can I expect?

#### SRE Sacramento River Erosion

Tree cutting in preparation for Contract 2 Season 2 (no tree clearing is necessary to prepare for Contract 4). Approximately 55% of the Contract 2 clearing was completed by February 15, and the remainder will be done when weather and river conditions permit safe clearing. The public should expect to see a bird monitor and possibly some an archeological monitor observing the tree-clearing to ensure nesting birds are spared and artifacts are properly preserved on any portion of cultural significance.

#### SREL Seepage, Stability, and Overtopping

Garcia Bend Park will remain unavailable for public use through April 2024 because of restoration of parking lot. Jet Grouting at Westin Hotel will continue through April 2024 with demobilization and site clean-up through June 2024.

Hours of Operation: Mon – Sat from 7am-7pm.

#### Garcia Bend Park Staging

- ◆ Boat ramp closed during construction at the City's request with intermittent vehicle traffic during construction.
- ◆ Garcia Bend Park will have light traffic in and out until the end of the year.

#### Westin

- ◆ Levee cutoff wall work will continue through April 2024 and then the testing/clean up work will occur May through June 2024.
- ◆ Sump 41 pump station construction is complete.

## Question of the Month

### What was the solution to the SREL C4 sinkhole problem?

The SREL C4 sinkholes were caused by a combination of the instability of the levee embankment due to the rebuilding of the levee after the Edwards Breach and the forcefulness of installing a triple fluid jet grout wall. USACE modified its original design to include additional stabilization measures, in the form of single fluid jet grout columns, to help pretreat the soils and act as an energy buffer, which helped dissipate the energy from the installation of the triple fluid columns.

### Information Resources:

Project Webpage:

[www.sacleveeupgrades.com](http://www.sacleveeupgrades.com)



Sacramento District Homepage:

[www.spk.usace.army.mil](http://www.spk.usace.army.mil)

Contact Information:

For questions or concerns, please contact our Public Affairs Office at

916-557-5100

[spk-pao@usace.army.mil](mailto:spk-pao@usace.army.mil)

## Upcoming Milestones

### Seepage/Stability/ Overtopping

#### SREL Contract 4

Construction  
April 2023 - June 2024

### Erosion

#### Contract 2

Construction  
July 2023—October 2024

#### Contract 3

Construction Contract Award  
Anticipated January/February  
2025

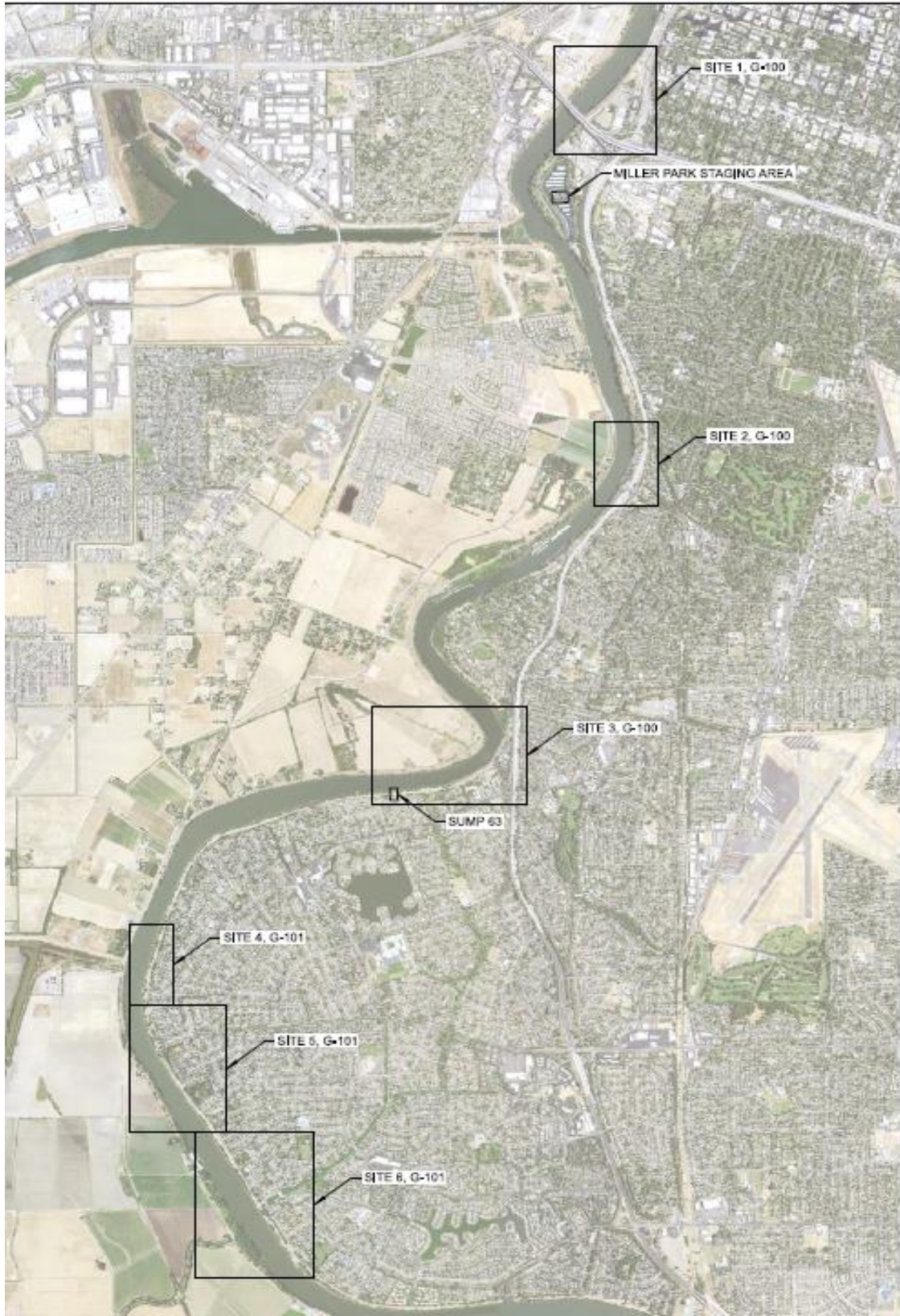
#### Contract 4

Construction  
July 2024—October 2024

Additional information can be found on  
our project web page at  
[www.sacleveeupgrades.com](http://www.sacleveeupgrades.com)

\*All Dates Subject to Change

# Erosion Contract 2 Construction Map



# Erosion C4 Construction Map

