

SACRAMENTO DISTRICT AMERICAN RIVER COMMON FEATURES 2016 SACRAMENTO RIVER EAST LEVEE (SREL), CONTRACT 2 PROJECT OVERVIEW

12 March 2021

Nikole May
Senior Project Manager

Hans Carota
Technical Lead

Brad Anderson
Environmental Manager



US Army Corps
of Engineers®



2020 CONTRACT 1 SB CUTOFF WALL



2020 CONTRACT 1 SCCB CUTOFF WALL



JET GROUT RIG
SOURCE: WIKIMEDIA.ORG



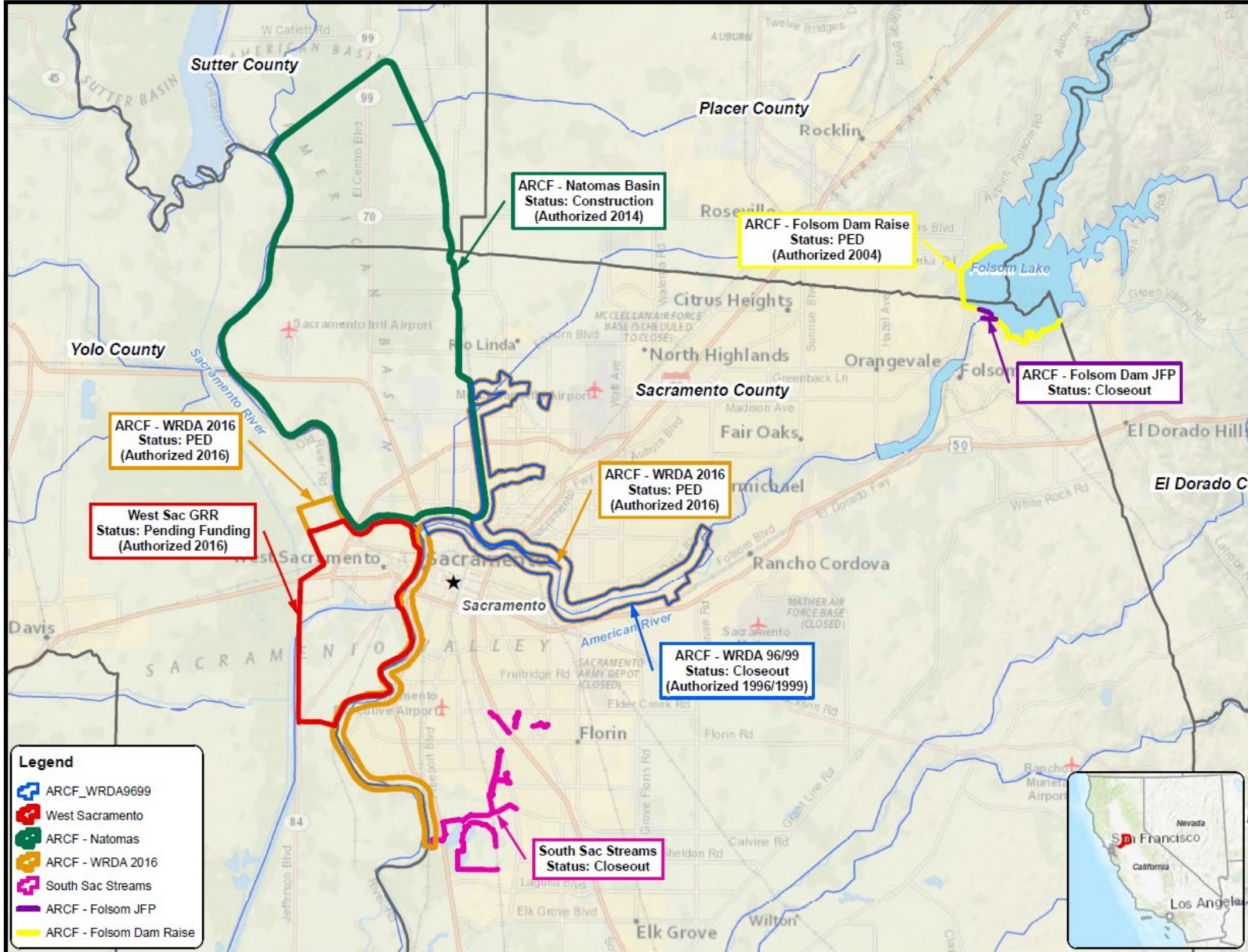
AGENDA



- System Overview
- ARCF 2016 Overview
 - Project Partners
 - Project Progress
- SREL C2 Contract Overview
 - Technical Overview
 - Haul Routes/Access Points
 - Alternative Bike Routes
 - Impacts
 - Schedule
- Contact Information



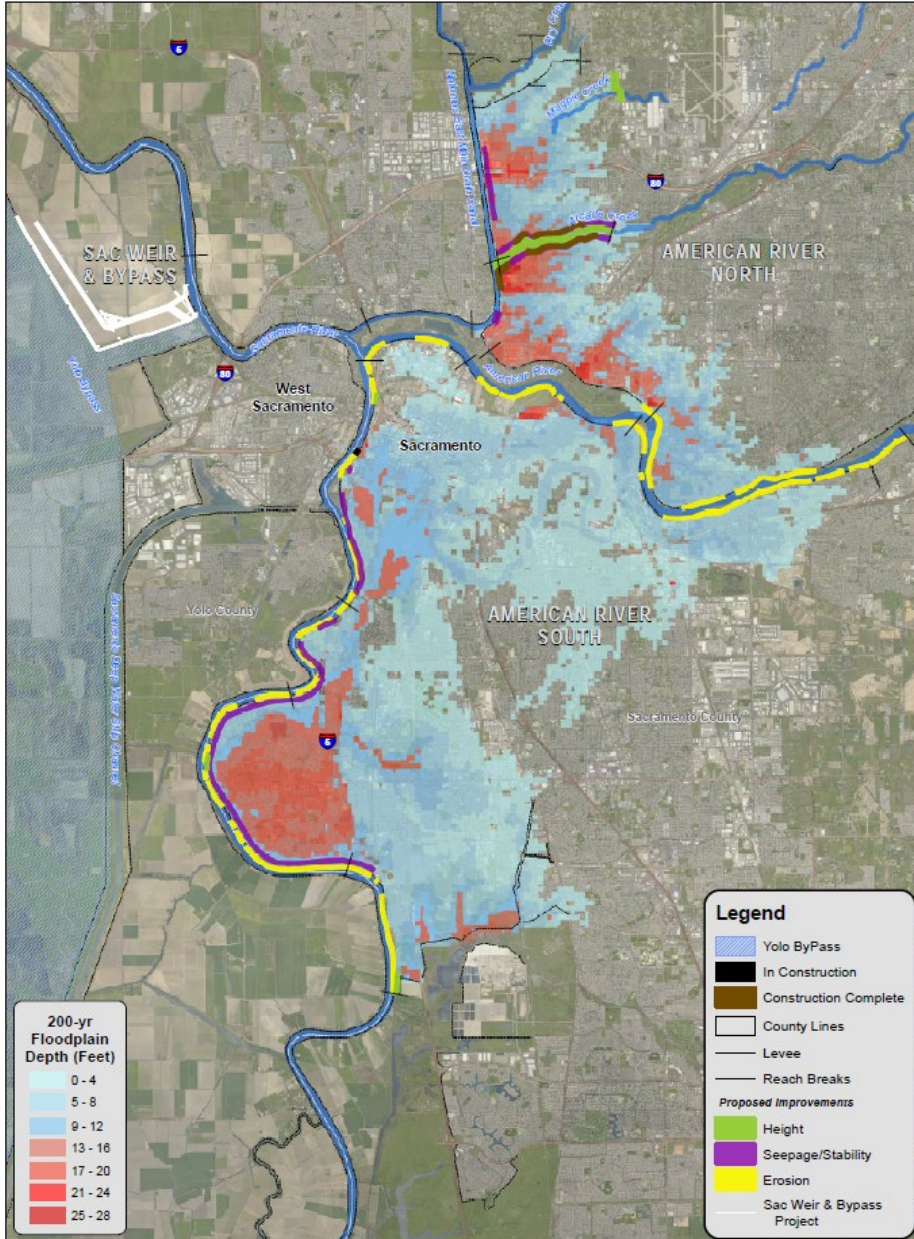
SYSTEM OVERVIEW



Data: 6/2/2018 12:28 PM 100% SPC/NVW/15AC_sck/ds.usace.army.mil/EGIS ©EDMANT/US/SPK Team Data/organizations/CS/SPK-CP/M/US/Projects/AmerRiver Projects/Mao.mxd



AMERICAN RIVER COMMON FEATURES (ARCF) 2016



SUPPLEMENTAL TARGET JAN 2024

Authorized Plan	
Features	
North Area Streams Seepage	4 miles
Sacramento River Seepage	9 miles
American River Erosion	11 miles
Sacramento River Erosion	10 miles
Levee Stabilization	5 miles
Levee raises	5 miles
Widen Sacramento Weir and Bypass	1500 feet
Reduces Risk	500,000 people
	125,000 structures
	\$62 billion



PROJECT PARTNERS



Federal Government



**US Army Corps
of Engineers®**

State Government



Central Valley
Flood Protection
Board



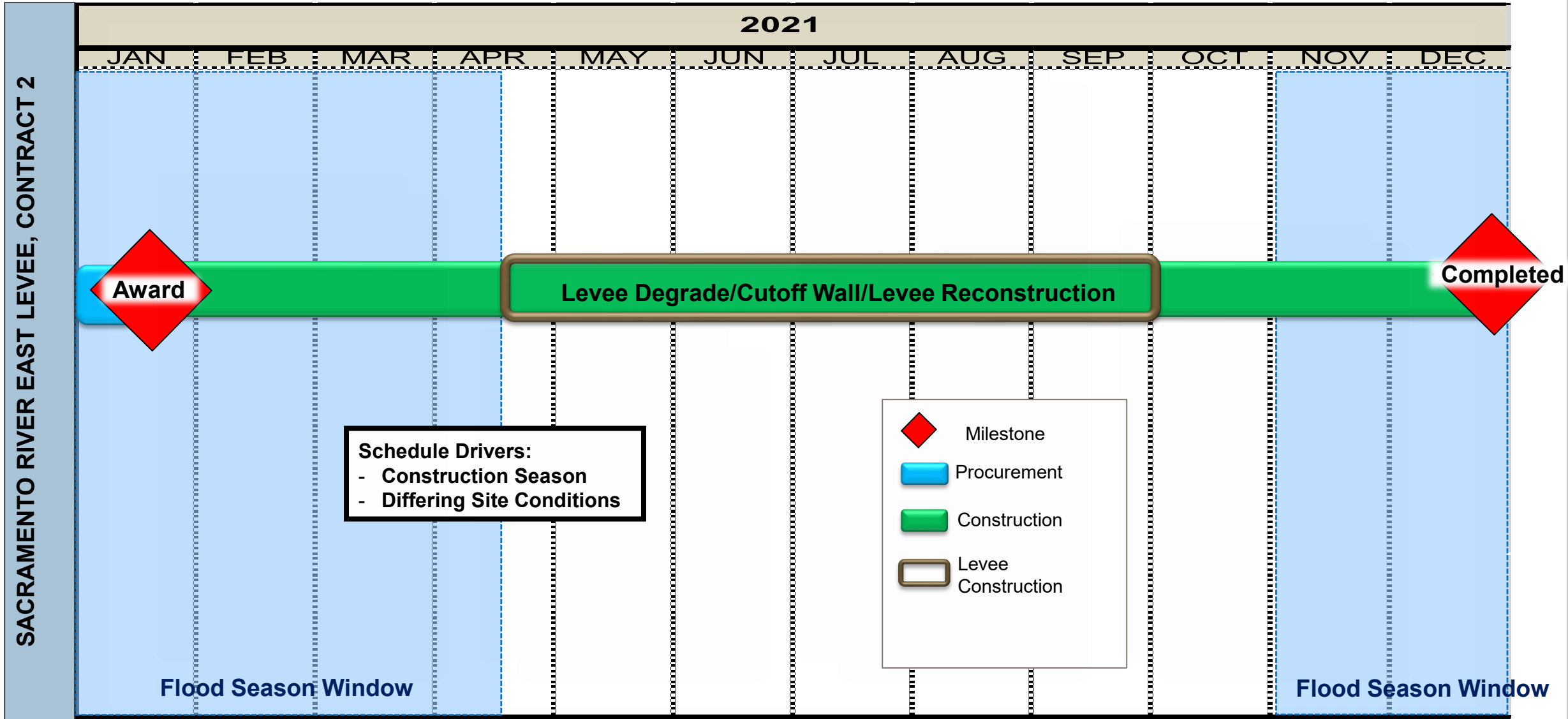
Department of
Water
Resources

Local Government



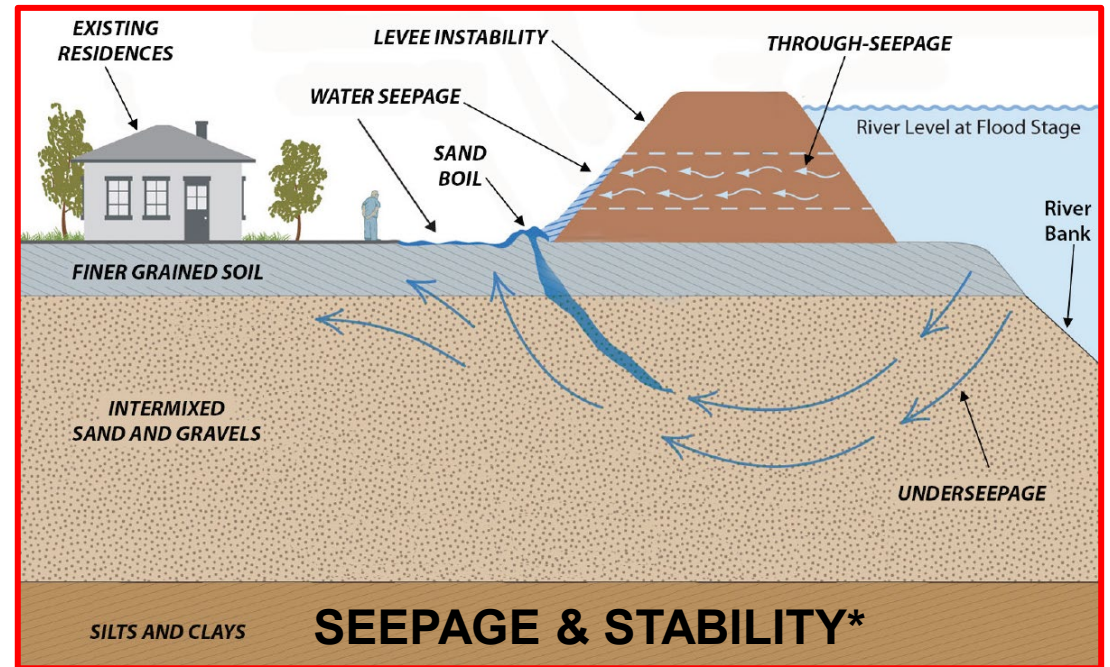
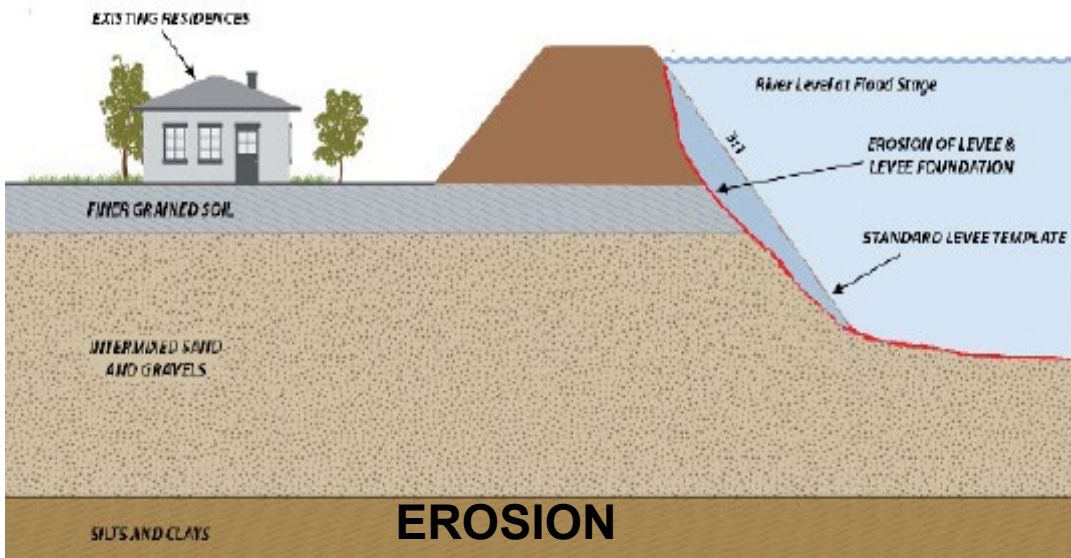
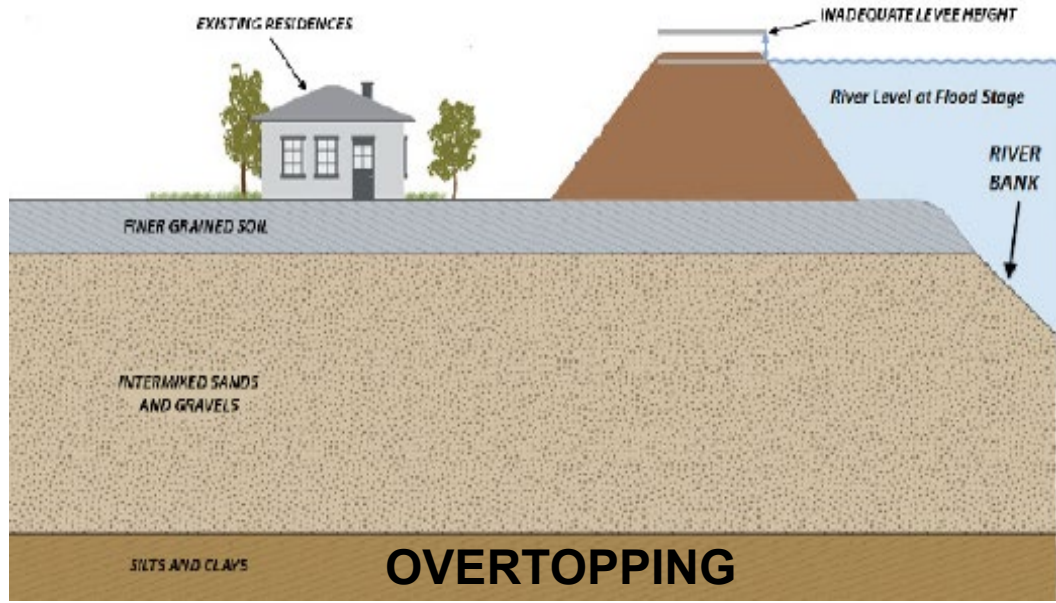


SACRAMENTO RIVER EAST LEVEE C2 SCHEDULE





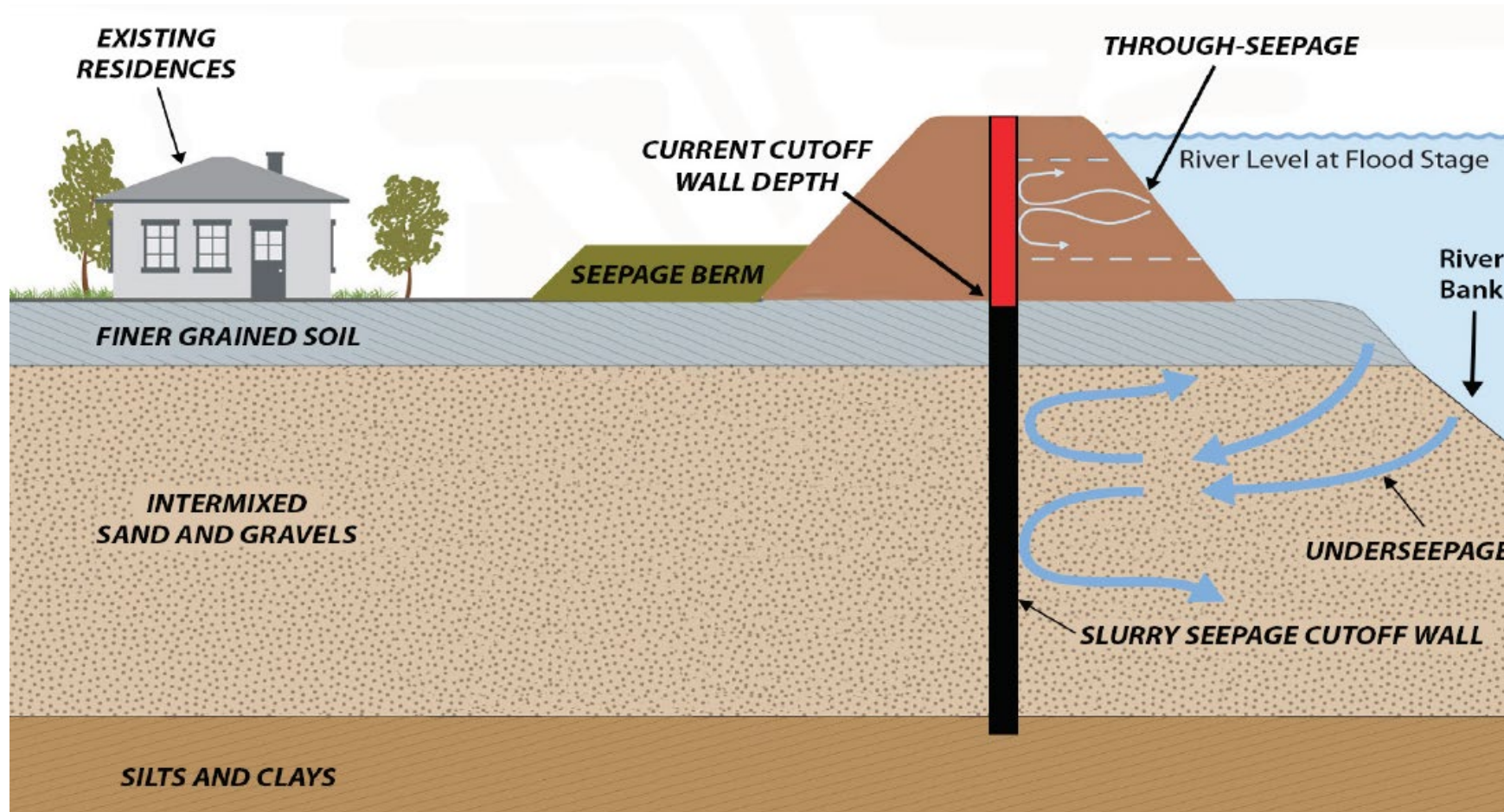
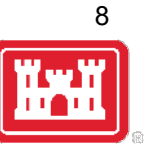
CAUSES OF LEVEE FAILURE



*SREL CONTRACT 2 FOCUSES ON ADDRESSING SEEPAGE AND STABILITY ISSUES

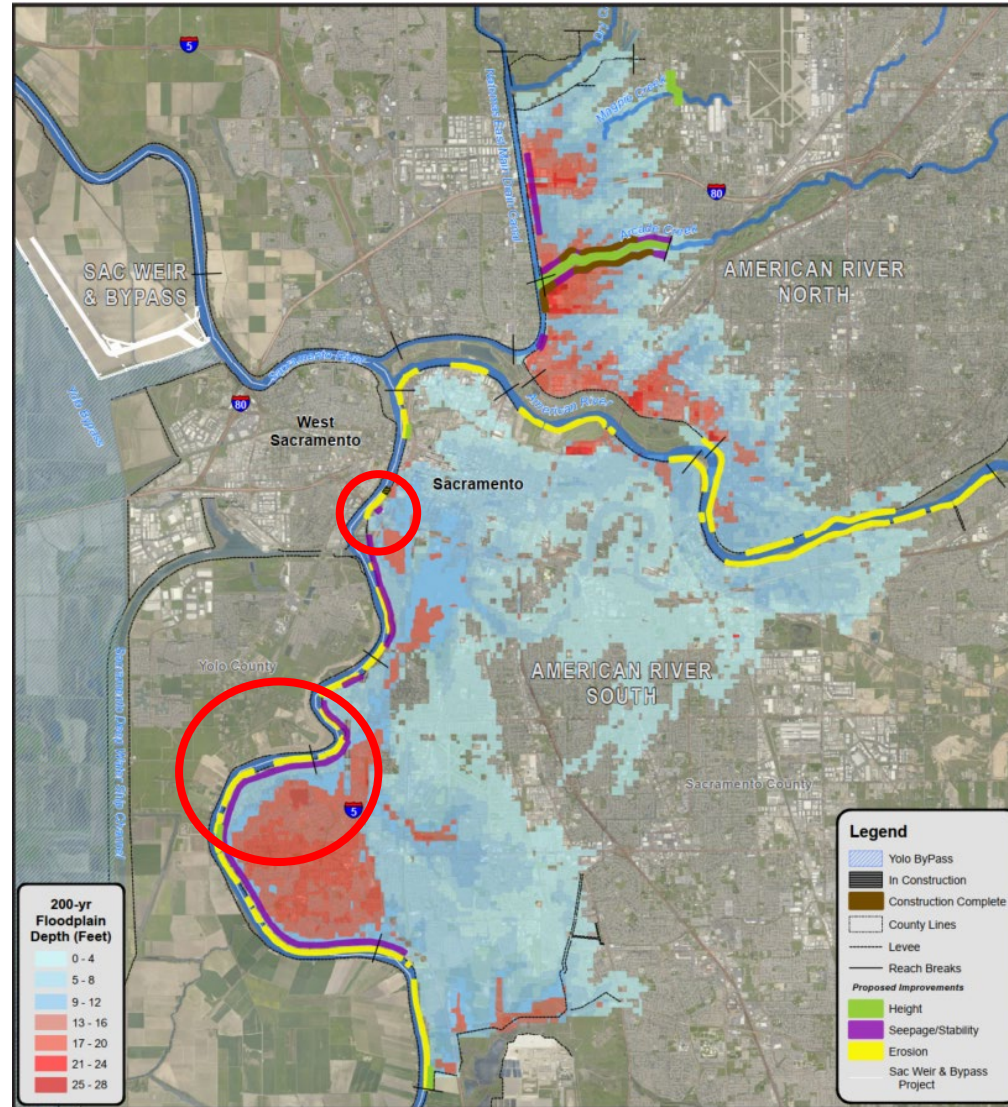


SEEPAGE & STABILITY ISSUES ADDRESSED



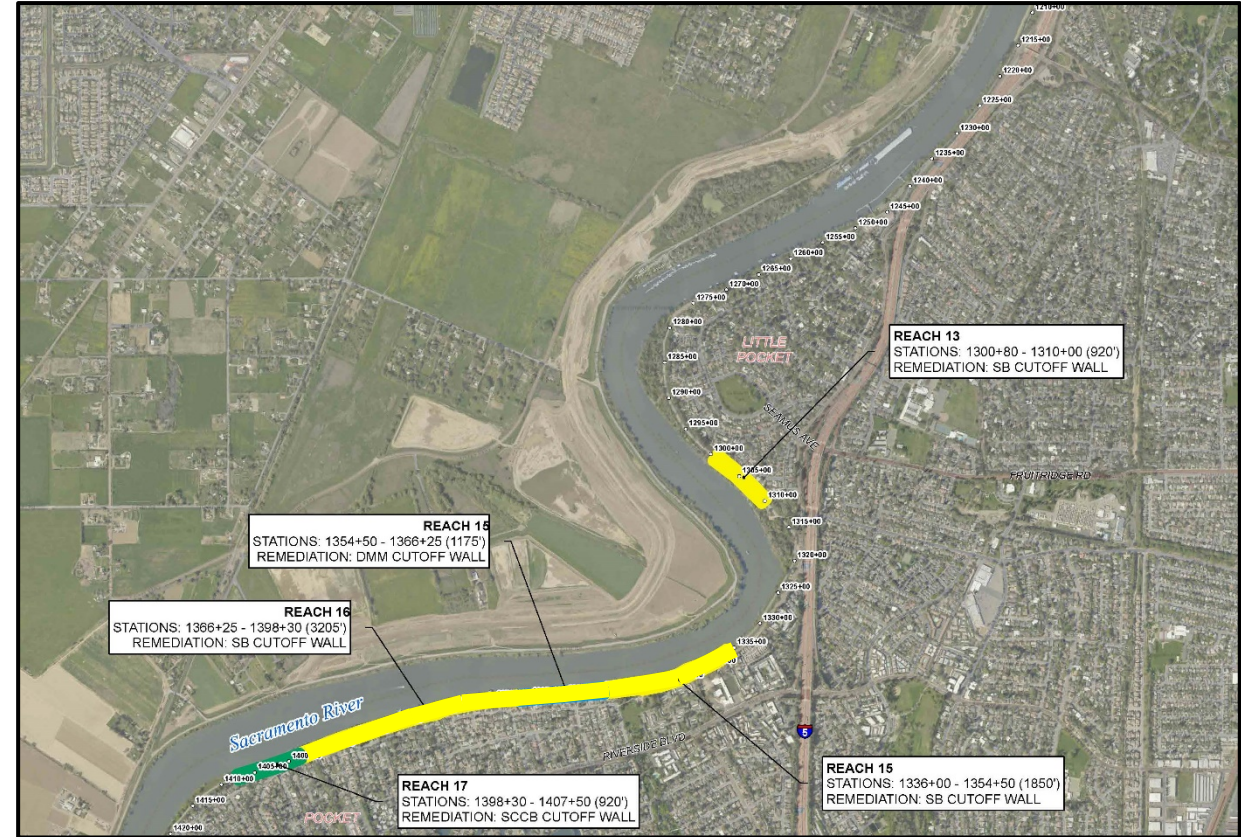
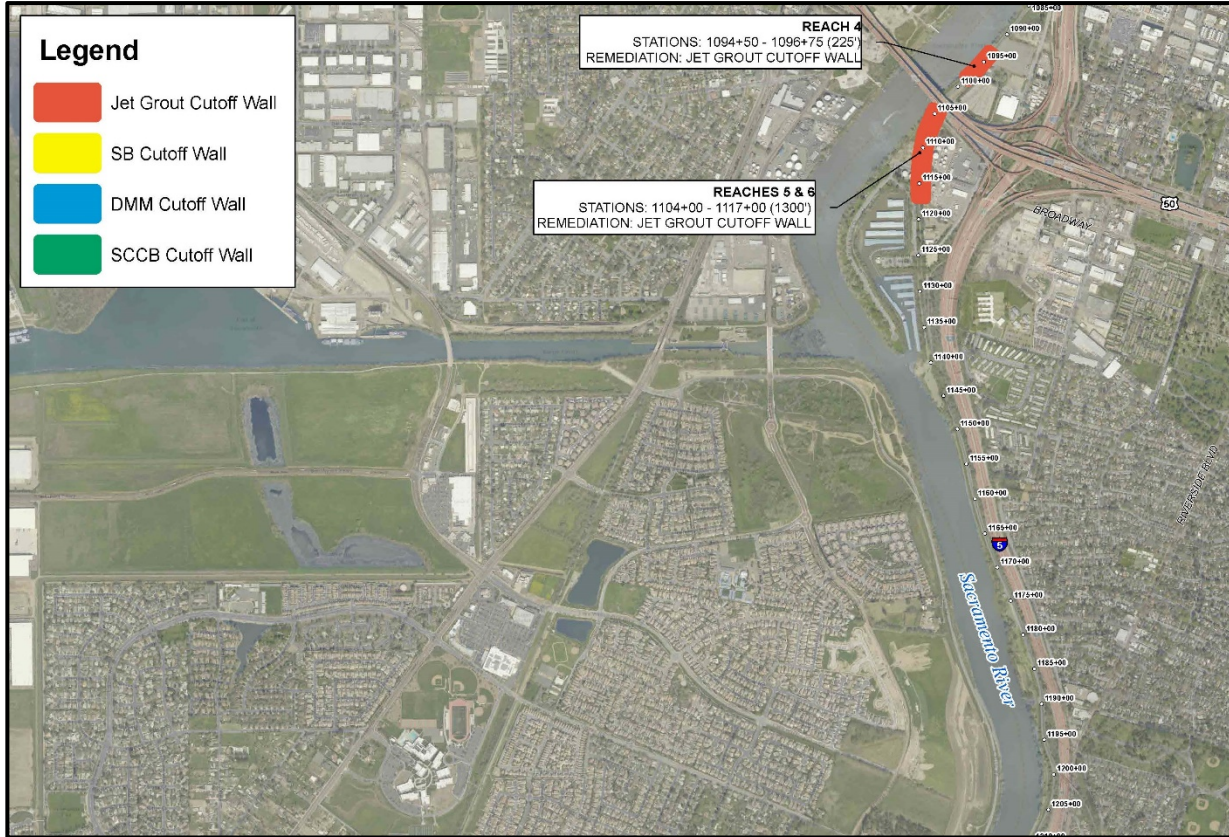


SACRAMENTO RIVER EAST LEVEE (SREL) CONTRACT 2





SREL CONTRACT 2 OVERVIEW



MARCH – DECEMBER 2021

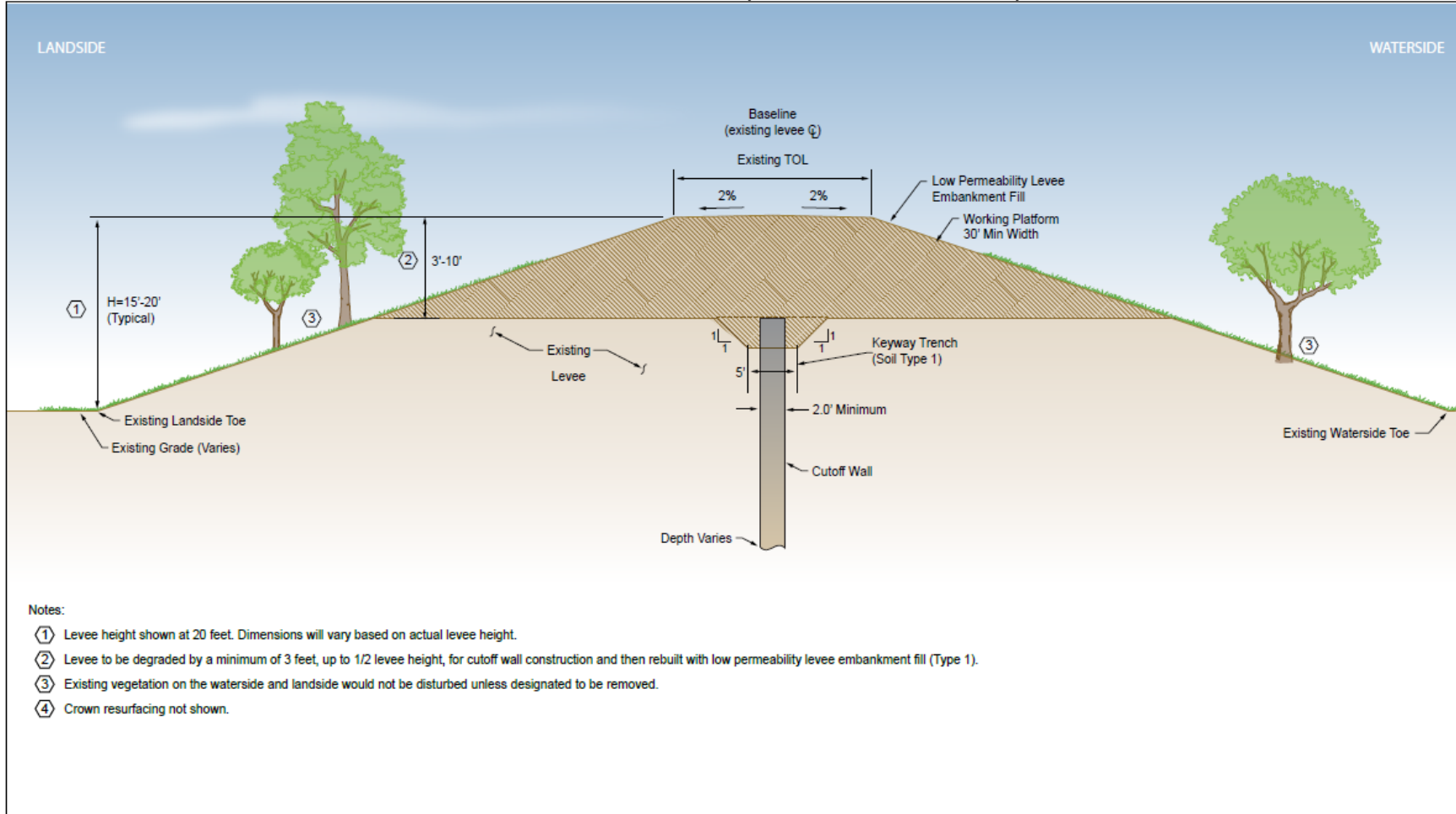
Jet Grout Cutoff Wall	Approximately 1,600 feet (0.3 miles)
Conventional Cutoff Wall	Approximately 8,320 feet (1.6 miles)
Total Cutoff Wall	Approximately 9,920 feet (1.9 miles)



TYPICAL CUTOFF WALL CROSS SECTION



POCKET WORK AREAS – CONVENTIONAL (OPEN TRENCH) CUTOFF WALLS



Source: GEI & HDR 2014, adapted by GEI 2019



2020 Contract 1 SB Cutoff Wall Excavation



2020 Contract 1 SB Wall Material Mixing



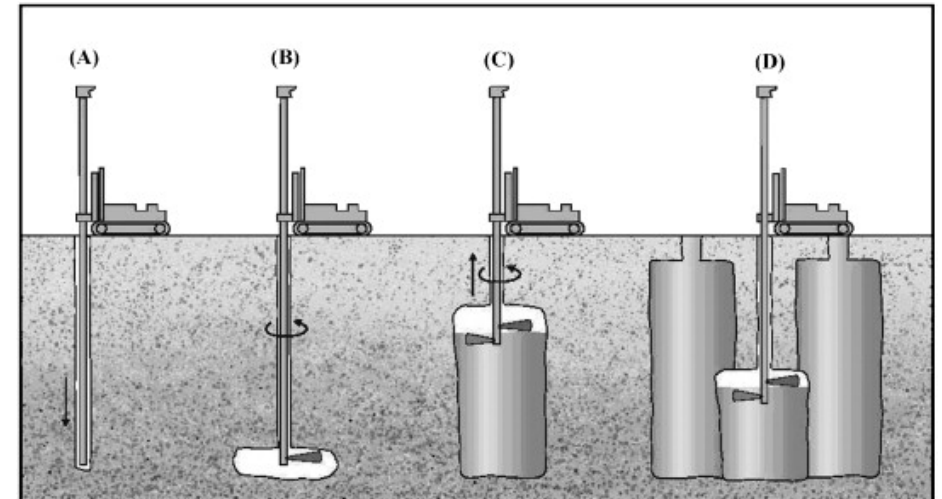
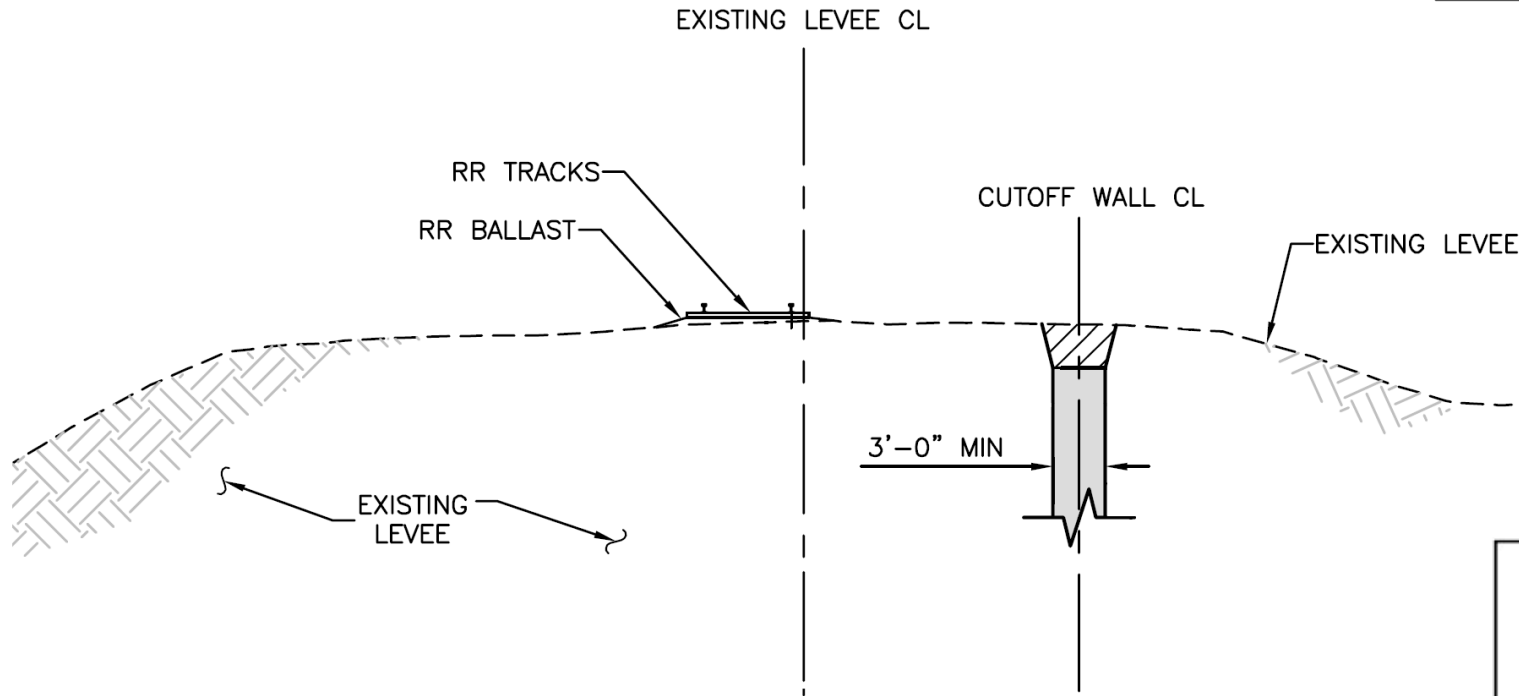
TYPICAL CUTOFF WALL CROSS SECTION



WORK AREAS NORTH OF MILLER PARK – JET GROUT CUTOFF WALLS

LANDSIDE

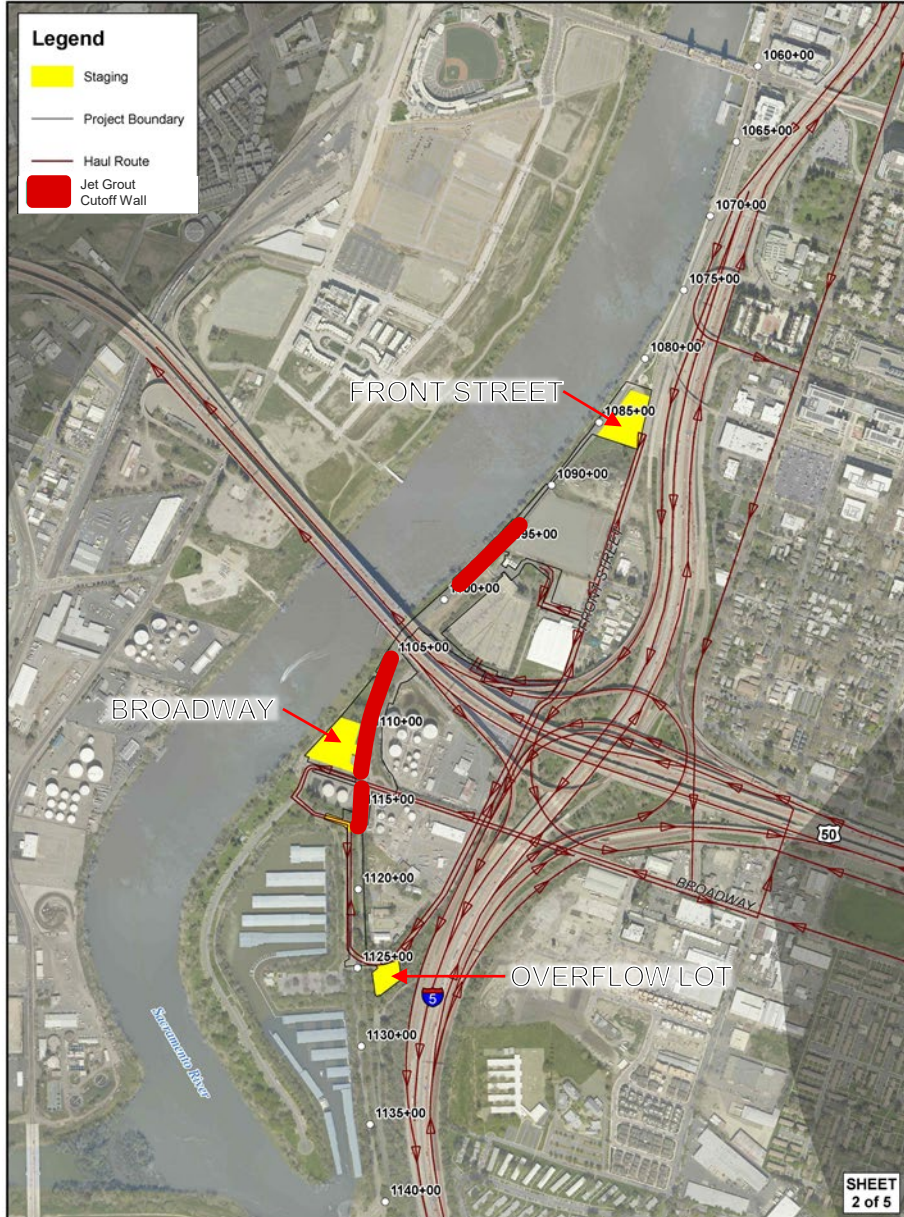
WATERSIDE



Source: Science Direct <https://doi.org/10.1016/j.ijrmms.2008.10.005>



SREL C2 - MILLER PARK WORK AREAS



APRIL – DECEMBER 2021	
Jet Grout Cutoff Wall	1,600 feet (0.3 Miles)
Hours of Operation	24 Hours / Day 5 Days / Week
Staging Area	Front Street; Broadway; Miller Park Overflow Parking Lot;
Access Points	Front Street; Broadway;



S

MARKET WORK AREA



Legend

- Staging
- Project Boundary
- Haul Route

SB Cutoff Wall

SHEET 3 of 5

MARCH – OCTOBER 2021	
Conventional Cutoff Wall	920 feet (0.2 Miles)
Hours of Operation	12 Hours / Day 6 Days / Week
Staging Area	Waterside of Levee;
Access Points	Piedmont Drive; Seamas Ave; Riverside Blvd



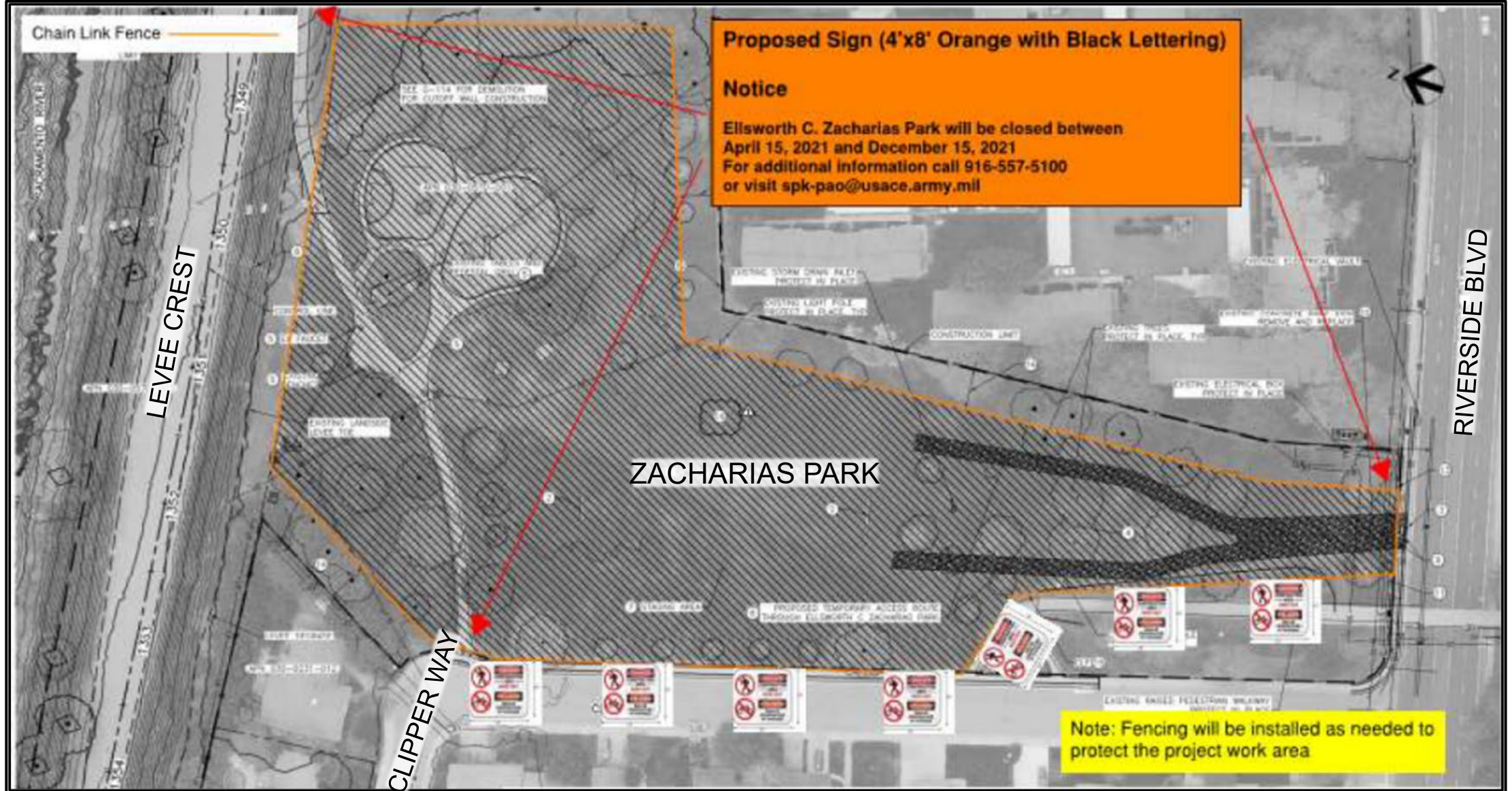
SREL C2 – BIG POCKET WORK AREA



MARCH – OCTOBER 2021	
Conventional Cutoff Wall	7,400 feet (1.4 Miles)
Hours of Operation	12 Hours / Day 6 Days / Week
Staging Area	Zacharias Park; North Point Way Green Space;
Access Points	Riverside Blvd; Zacharias Park; Grangers Dairy Road; North Point Way

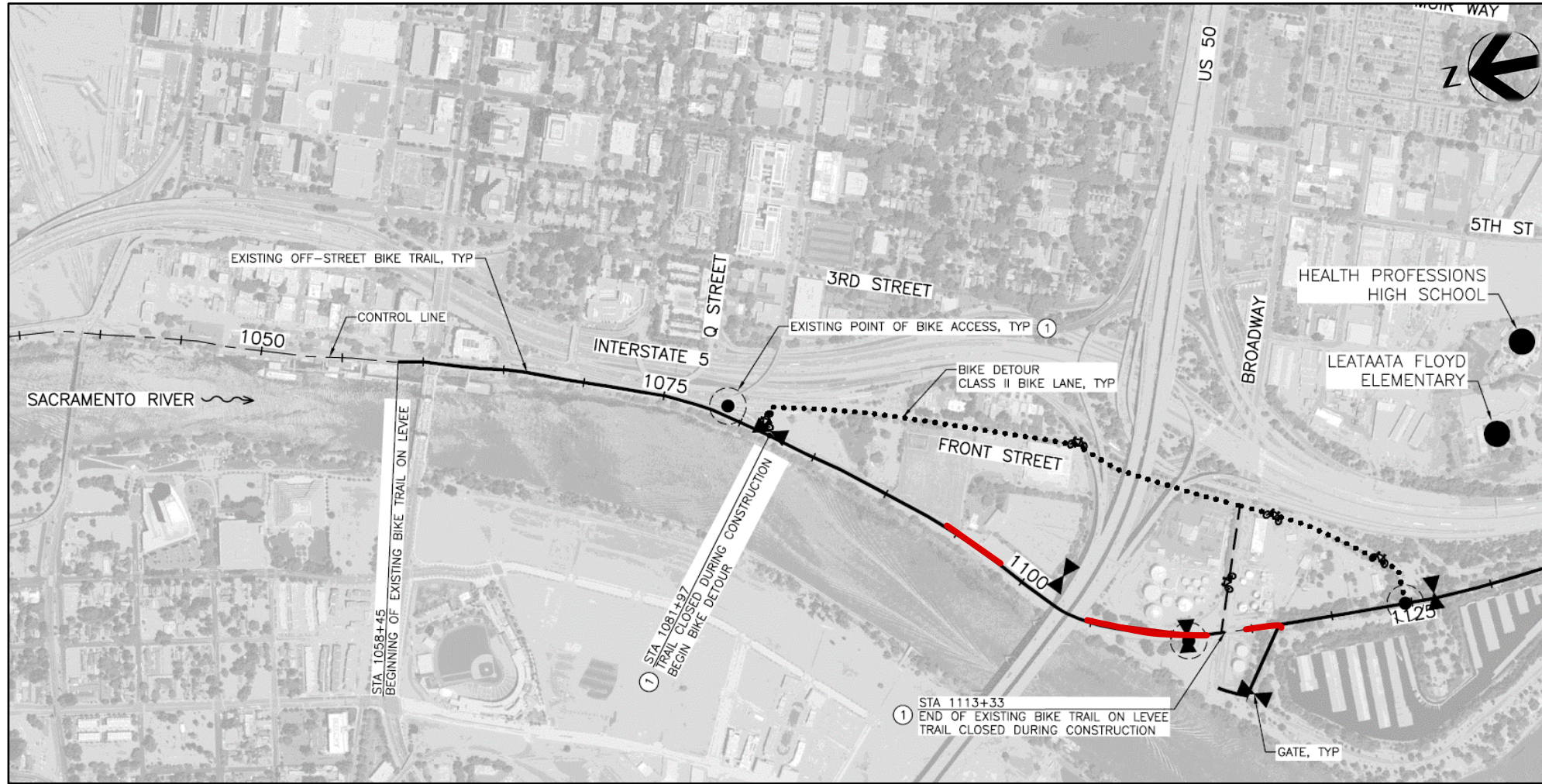


ZACHARIAS PARK STAGING AREA



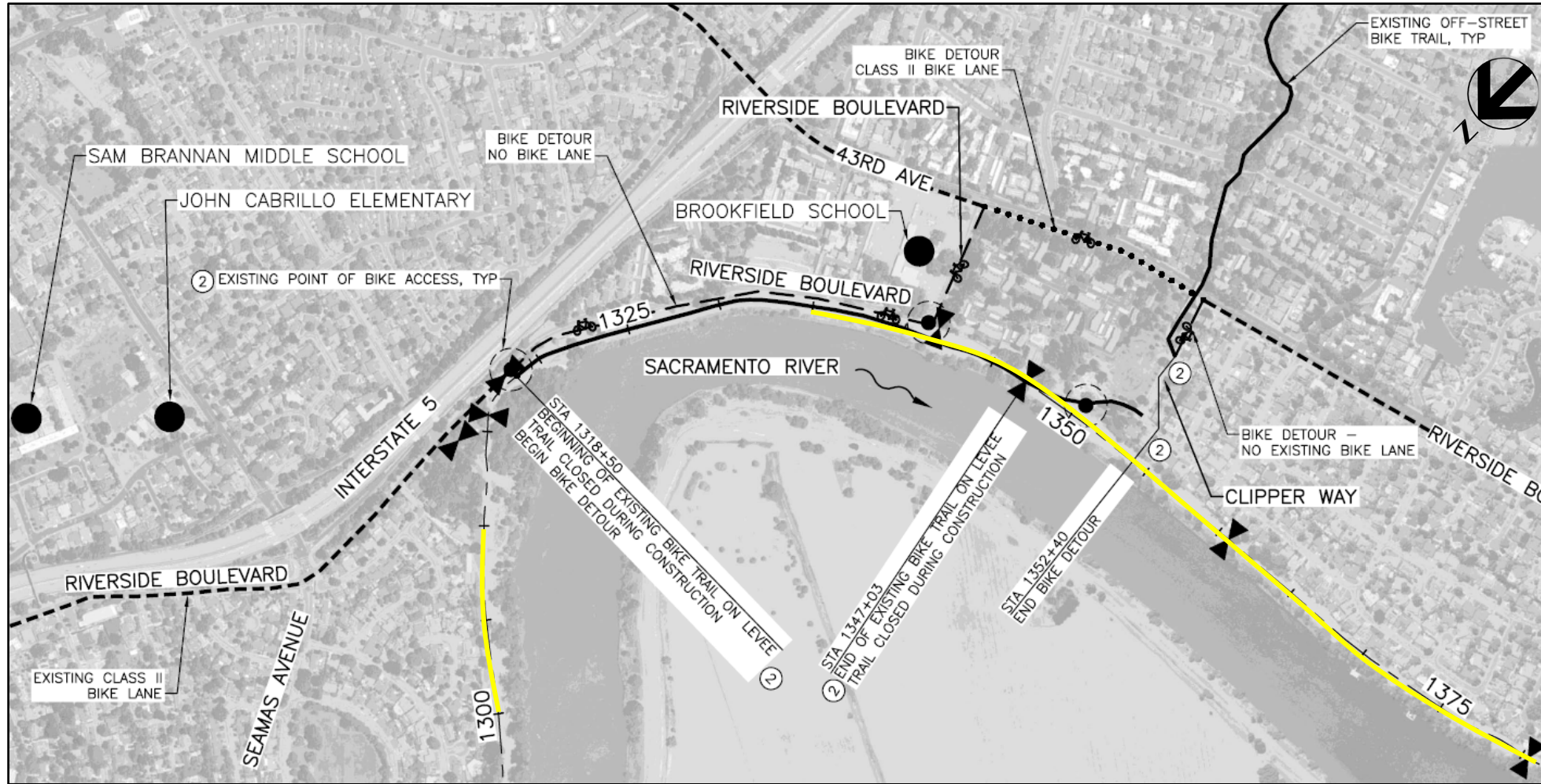


ALTERNATE BIKE ROUTE





ALTERNATE BIKE ROUTE



IMPACTS



Biking

Bike trail Closed from April 2021 to December 2021:
-Under Pioneer Bridge
-North End of Pocket

Bike detours will be put in place.

Boating & Fishing

No river access where levee is degraded.

No boat launch closures expected.

Parks

Full Closure of Ellsworth Zacharias and North Point Way green space from April 2021 to December 2021 (2022 staging)

MITIGATION MEASURES



Detour Routes



Vibration Monitoring



Dust Control



Water & Air Quality Monitoring

VEGETATION & WILDLIFE



Trimming and Removing Trees Outside of Bird Nesting Season and to Protect Bats



Comprehensive Monitoring by Qualified Biologists



No impact to fisheries



Night Lighting that Reduces Impacts on Nocturnal Wildlife

HABITAT MITIGATION SITE COMPLETE



Beach Stone Lakes Mitigation Site (24.2 acres)

- Northern Woodland – 18.5 acres (YBCU)
- Southern Woodland – 5.7 acres (VELB and YBCU)
- Establishment Maintenance to the end of 2024



*A male valley elderberry longhorned beetle on elderberry.
Photo courtesy of Jon Katz and Joe Silveira, USFWS*



REGULAR UPDATES

Subscribe to construction and traffic email updates at sacleveeupgrades.com

The screenshot shows the website's navigation bar with links for About, Business With Us, Missions, Locations, Careers, Media, Library, Contact, and Coronavirus. A search bar is also present. Below the navigation is a breadcrumb trail: US Army Corps of Engineers > Sacramento District Website > Website. A large aerial photograph of a river and surrounding residential area is displayed. On the left side, there is a vertical menu with several options: Project Overview, American River Levees, Sacramento River Levees, Sacramento Weir, and a highlighted option: **Subscribe for Construction & Traffic email updates** (circled in red). Below this is a link for Project Information Tri-fold. The main content area features a section titled "Reducing flood risk in Sacramento" with a detailed paragraph about flood risk reduction efforts. At the bottom, there is a section for "Current Project Activities" with the heading "Sacramento River East Levee Contract 1 Construction".

Project Overview

American River Levees

Sacramento River Levees

Sacramento Weir

Subscribe for Construction & Traffic email updates



Project Information Tri-fold



Reducing flood risk in Sacramento

Greater Sacramento, California, is often considered to be the most at-risk region in America for catastrophic flooding, relying on an aging system of levees, weirs and bypasses and Folsom Dam to reduce its flood risk. But that system, just like a chain, is only as strong as its weakest link. Together, the U.S. Army Corps of Engineers, California's Central Valley Flood Protection Board, California Department of Water Resources, and the Sacramento Area Flood Control Agency have made tremendous progress in reducing the flood risk, but more work remains. Through the Bipartisan Budget Act, the Corps has received full upfront funding to modernize Sacramento's aging flood infrastructure. This allows us to more efficiently implement nearly \$1.8 billion in upgrades to Sacramento's flood risk management system. The authorized work includes up to: 13 miles of seepage cutoff walls, 21 miles of bank protection, 5 miles of levee stabilization, 5 miles of levee raises and widening the Sacramento Weir and bypass.

Current Project Activities

Sacramento River East Levee Contract 1 Construction



Submit Questions to spk-pao@usace.army.mil



- *This is an **exciting opportunity***
- ***You** are a part of it*
- *There will be **temporary inconvenience***
- *We will **mitigate** and try to **minimize***
- *We will be **transparent***
- *We will be **honest***
- *We will keep **communication lines open***



www.sacleveeupgrades.com

**U.S. Army Corps of Engineers
Sacramento District**

(916) 557-5100

spk-pao@usace.army.mil