

AMERICAN RIVER WATERSHED COMMON FEATURES, WATER RESOURCES DEVELOPMENT ACT OF 2016, SACRAMENTO RIVER EAST LEVEE CONTRACT 2

Draft Supplemental Environmental Assessment / Environmental Impact Report

Sacramento District
US Army Corps of Engineers

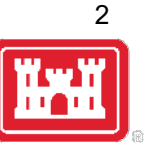
22 JULY 2020



US Army Corps
of Engineers®



Source: U.S. Army Corps of Engineers, Sacramento District



HOW TO PROVIDE COMMENTS

Connect by computer audio OR by phone

Talk:

Use WebEx “raise hand” function by clicking on the three dots

Write:

Miles Claret

Department of Water Resources

3464 El Camino Avenue Room 150

Sacramento, CA 95821

OR

Public Affairs Office

U.S. Army Corps of Engineers

1325 J Street Room 1513

Sacramento, CA 95814

Email:

PublicCommentARCF16@water.ca.gov

spk-pao@usace.army.mil

*****use “SREL Contract 2” in subject line**



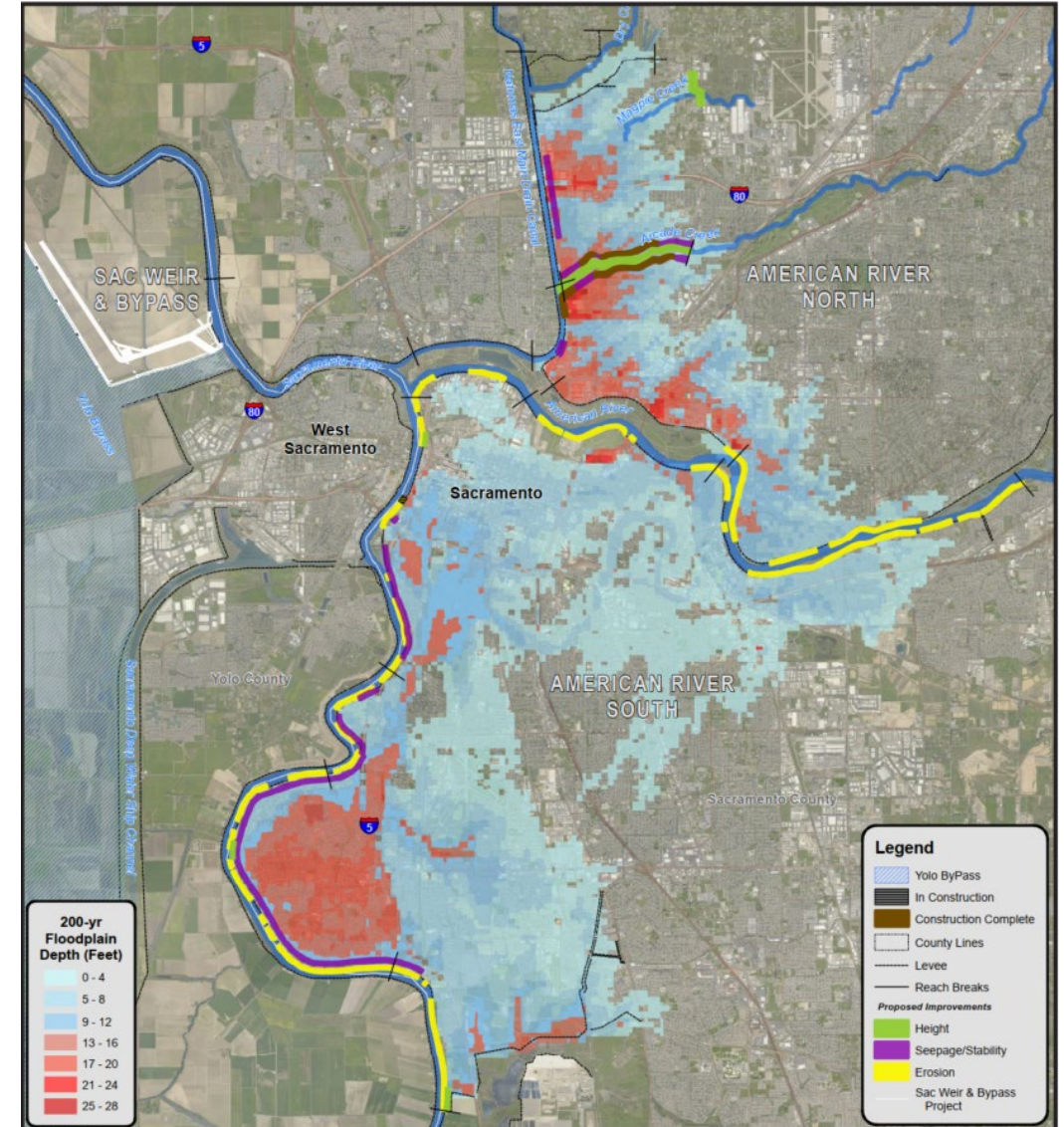
AGENDA

- American River Watershed Common Features 2016 Project
 - Final Environmental Impact Statement / Final Environmental Impact Report
- Sacramento River East Levee Contract 2
 - Supplemental Environmental Assessment / Environmental Impact Report (SEA/EIR)
- Opportunities for Public Input

AMERICAN RIVER WATERSHED COMMON FEATURES 2016



- Water Resources Development Act of 2016
- Emergency Supplemental Appropriations in the Bipartisan Budget Act of 2018



PROJECT PARTNERS

Federal Government



**US Army Corps
of Engineers®**

State Government



Central Valley
Flood Protection
Board



Department of
Water
Resources

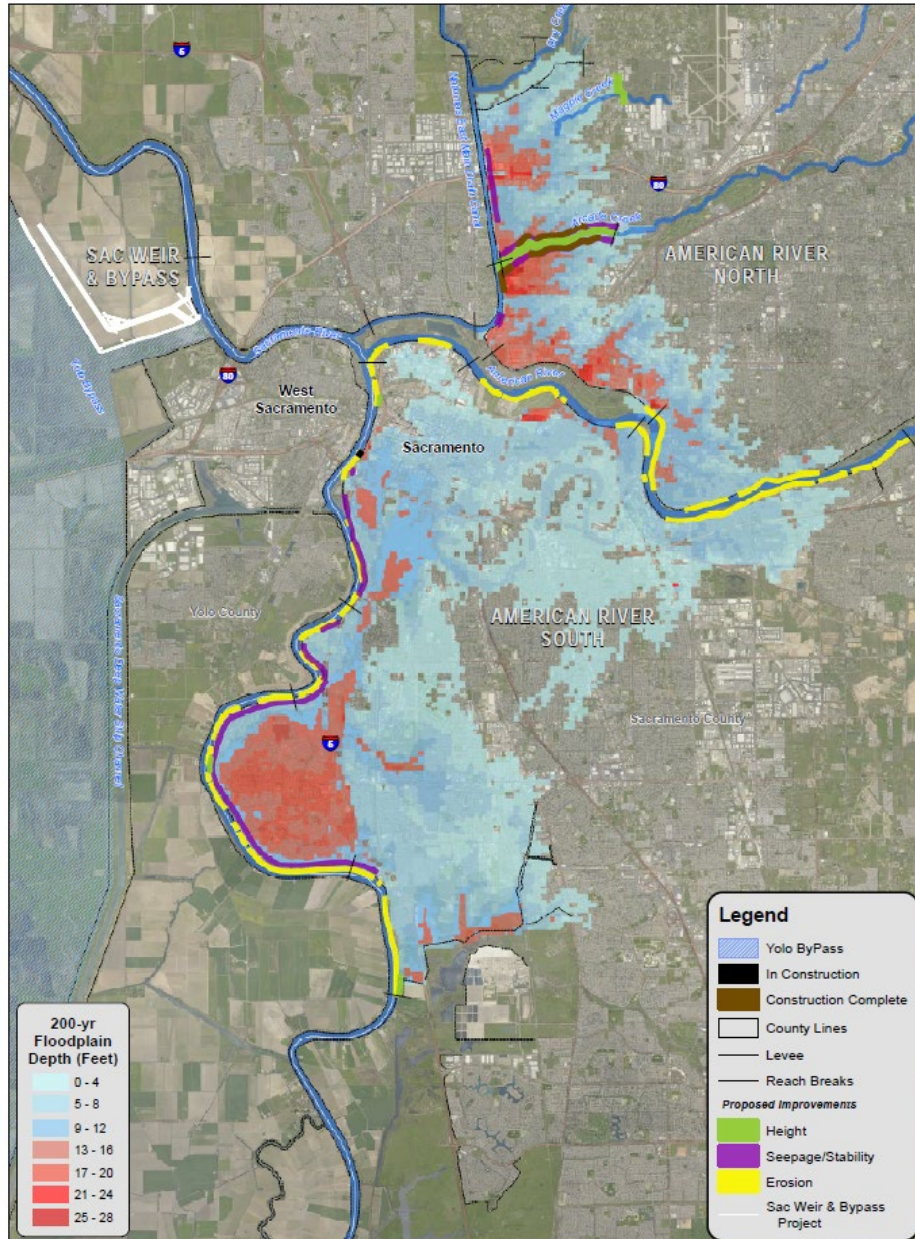
Local Government





AMERICAN RIVER COMMON FEATURES (ARCF) 2016

6



SUPPLEMENTAL TARGET JAN 2024

Authorized Plan

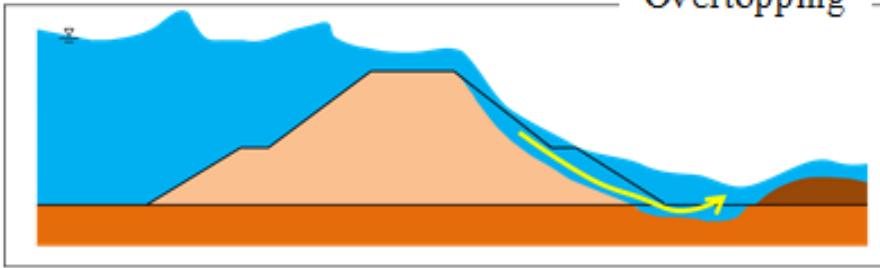
Features	
North Area Streams Seepage	4 miles
Sacramento River Seepage	9 miles
American River Erosion	11 miles
Sacramento River Erosion	10 miles
Levee Stabilization	5 miles
Levee raises	5 miles
Widen Sacramento Weir and Bypass	1500 feet
Reduces Risk	500,000 people
	125,000 structures
	\$62 billion protection

CAUSES OF LEVEE FAILURE

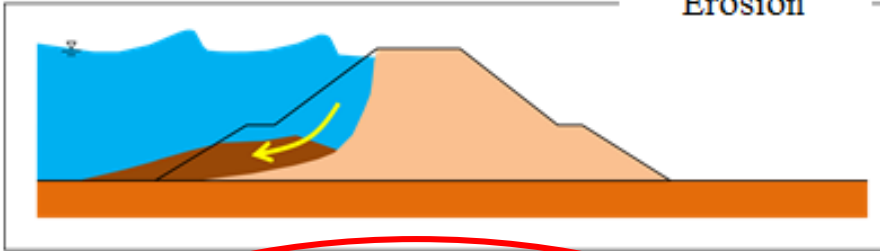


Image courtesy of PWRI Web Magazine

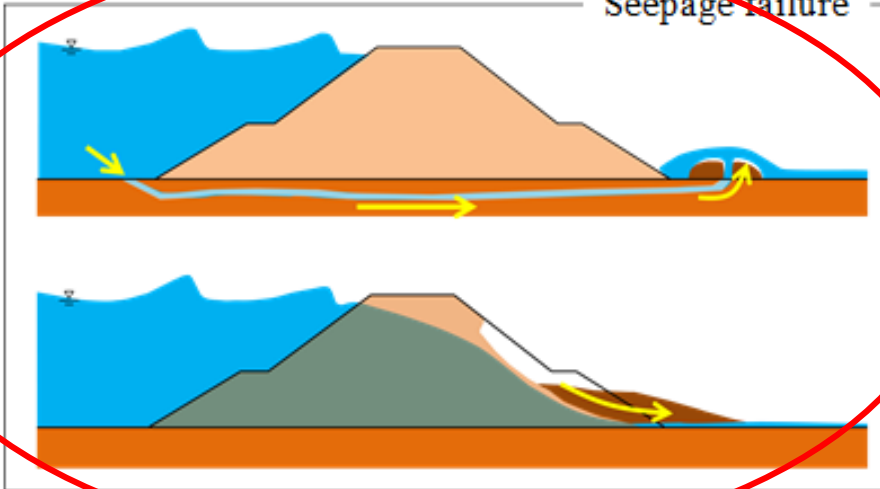
Overtopping



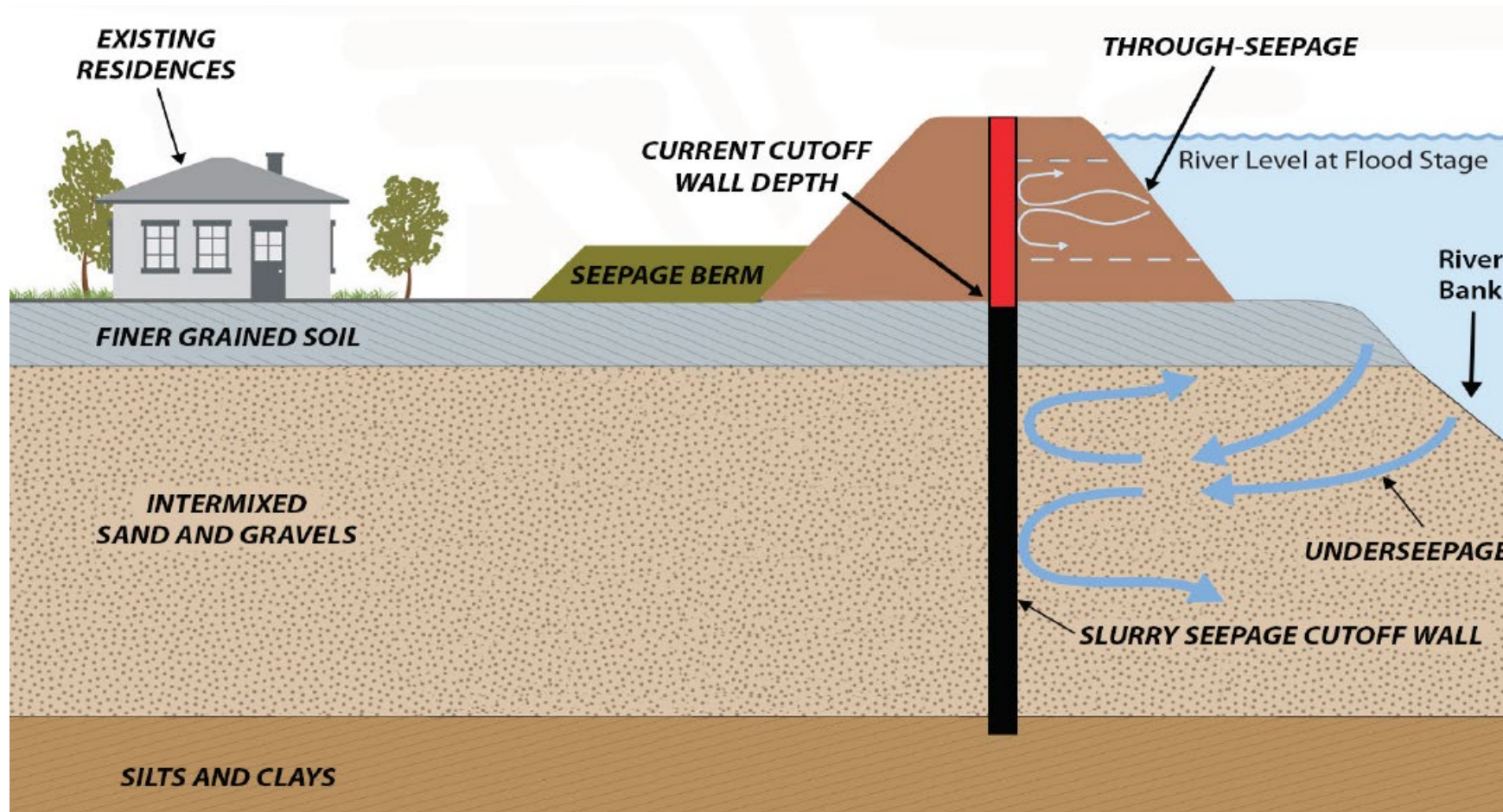
Erosion



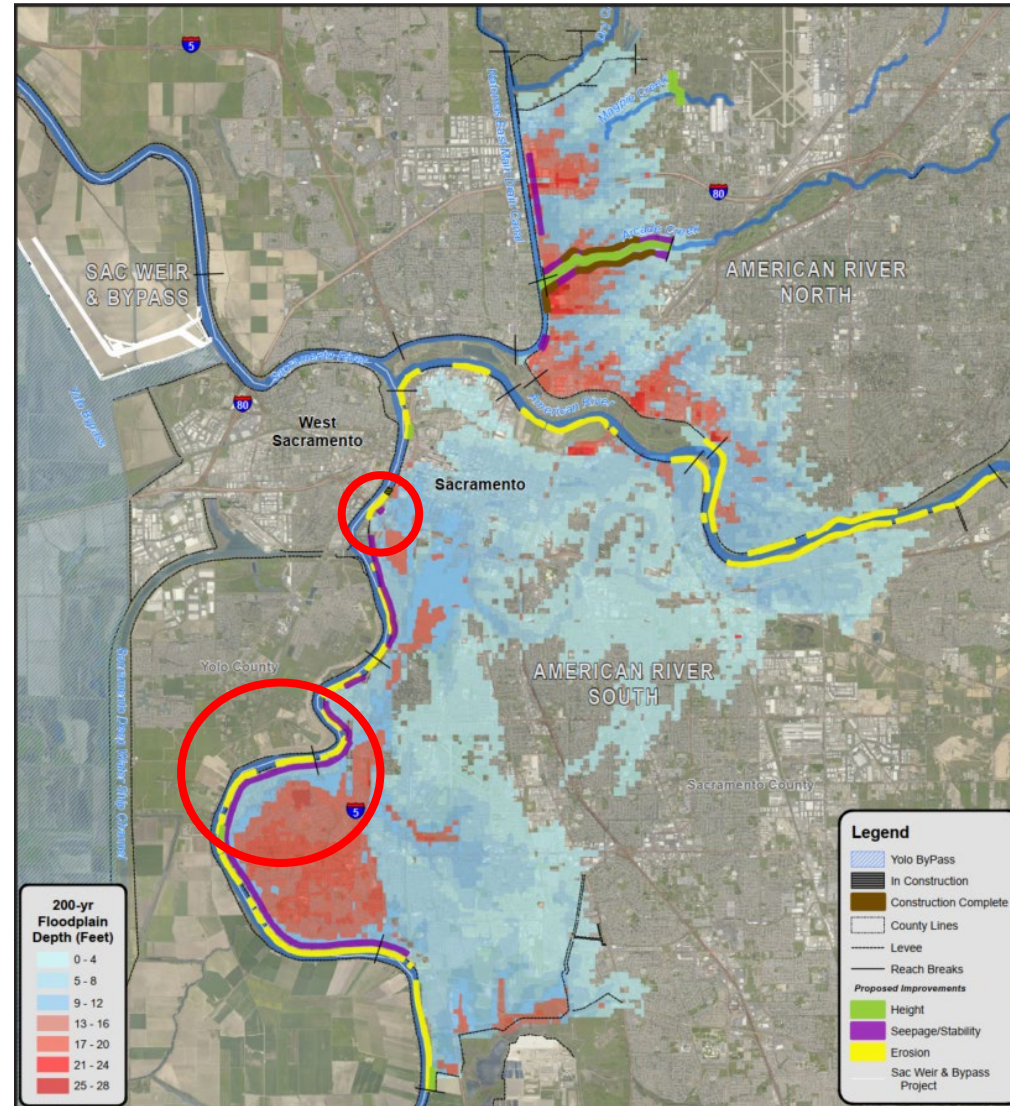
Seepage failure

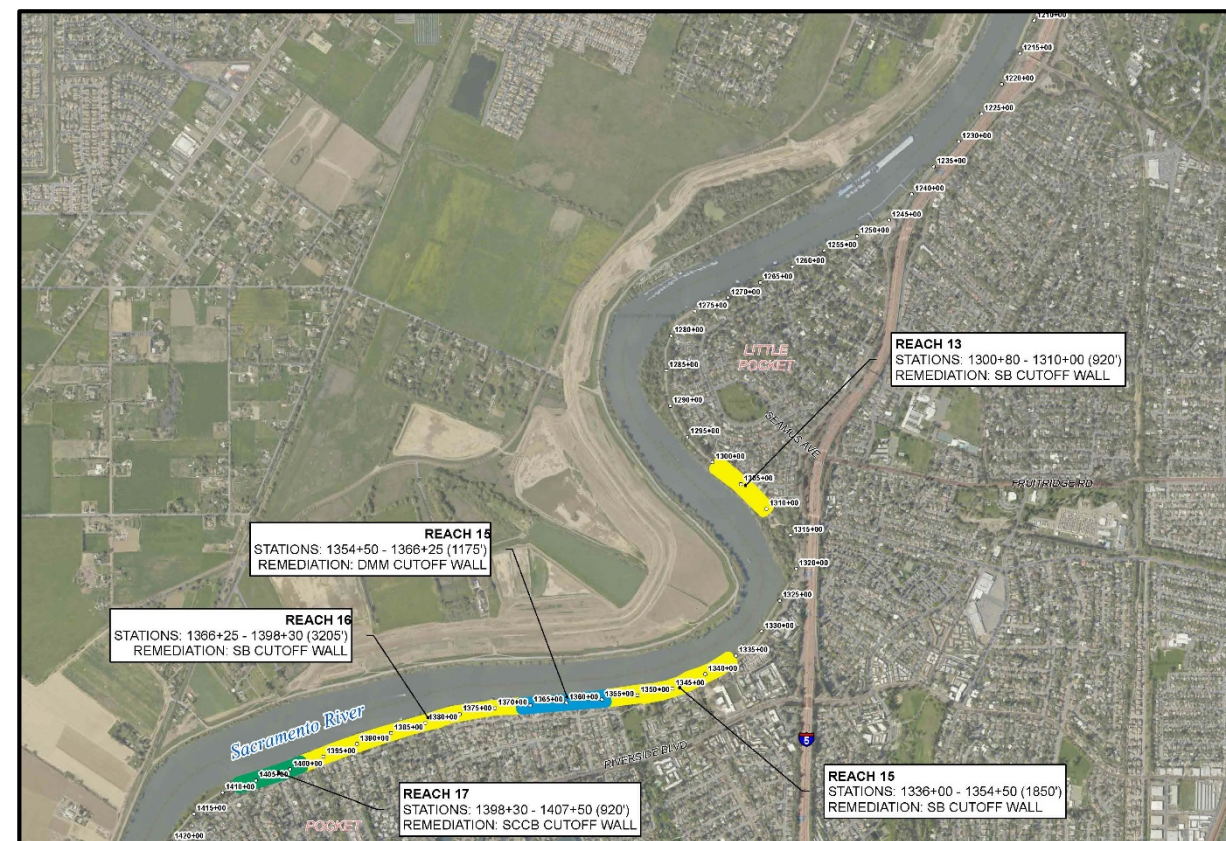


SEEPAGE & STABILITY ISSUES ADDRESSED

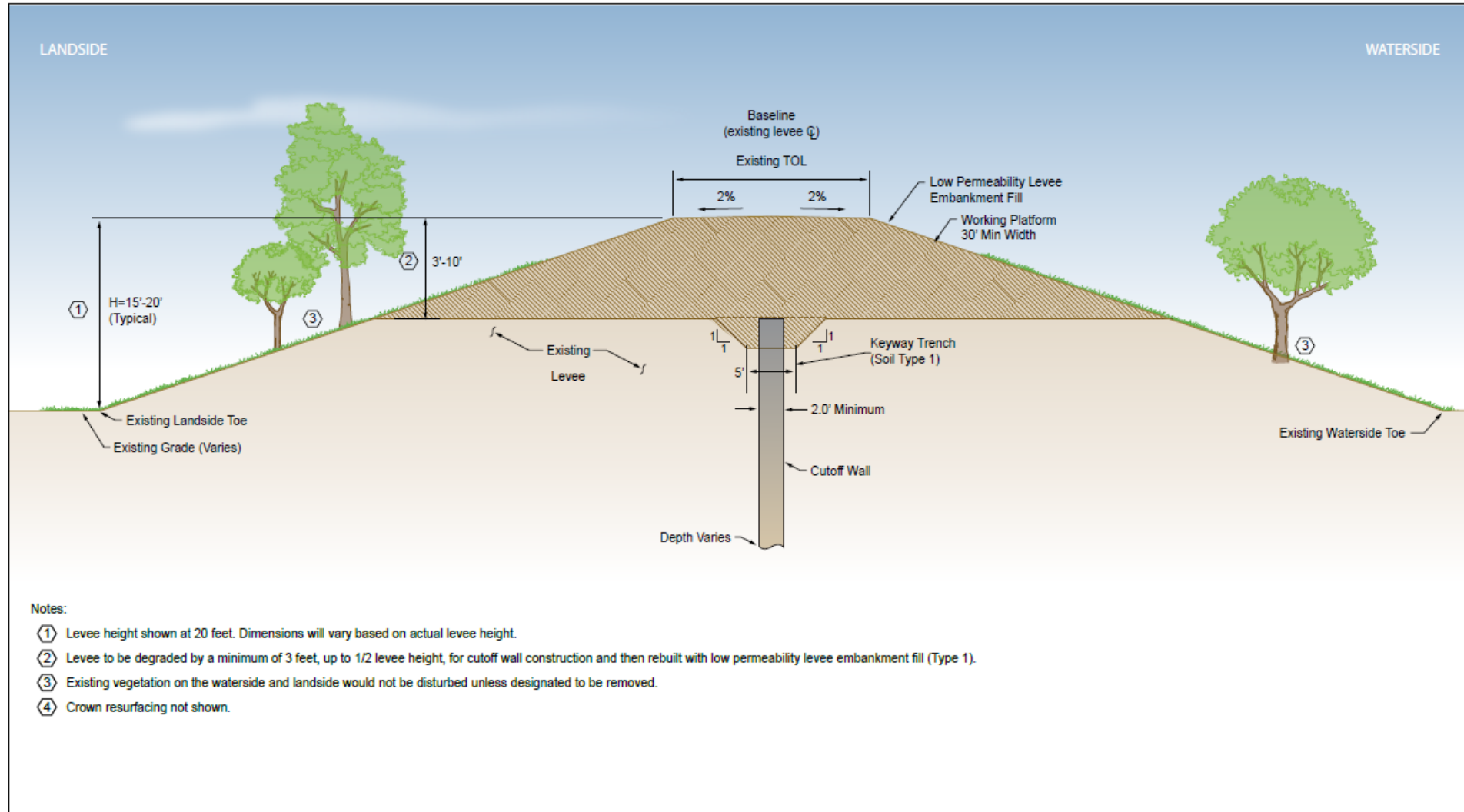


SACRAMENTO RIVER EAST LEVEE (SREL) CONTRACT 2



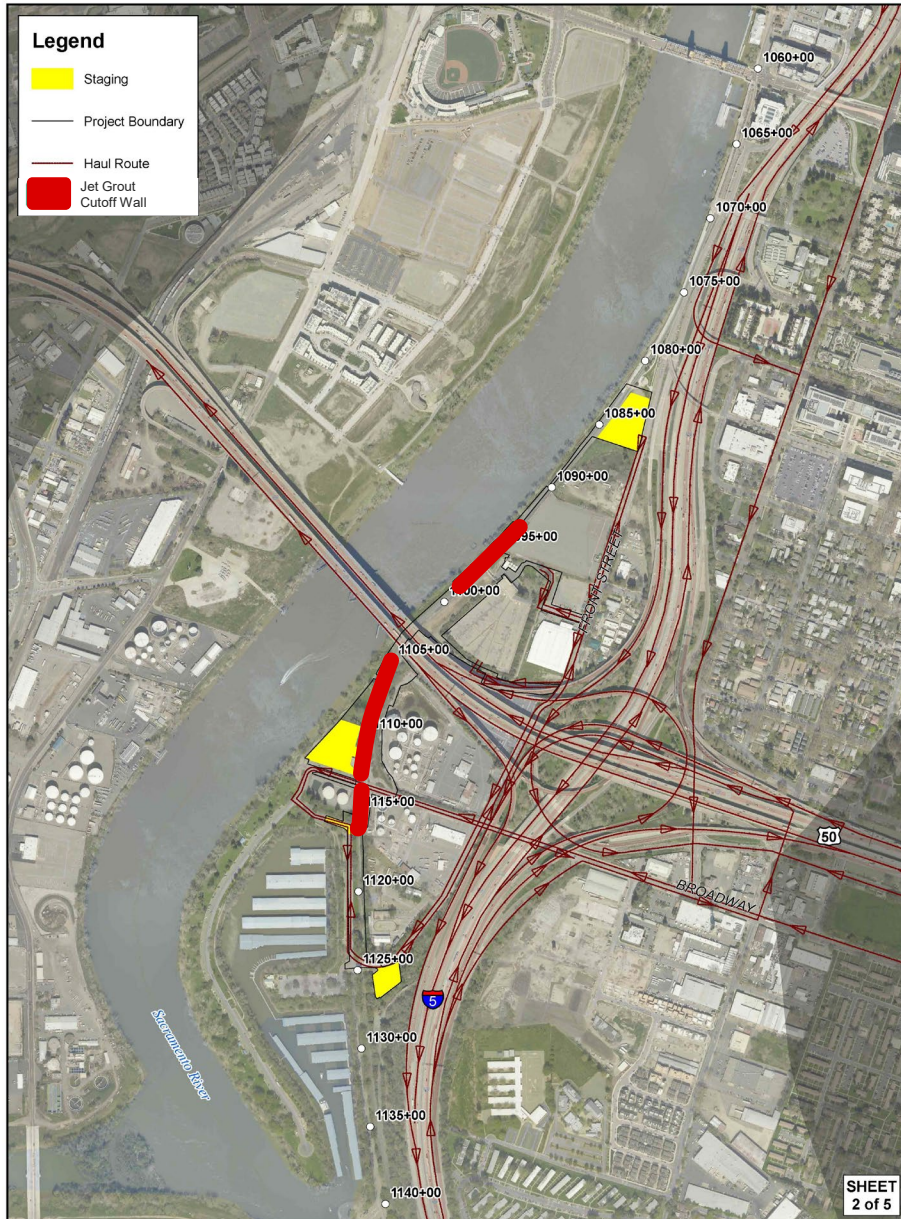


TYPICAL CUTOFF WALL CROSS SECTION



Source: GEI & HDR 2014, adapted by GEI 2019

SREL C2 - MILLER PARK WORK AREAS

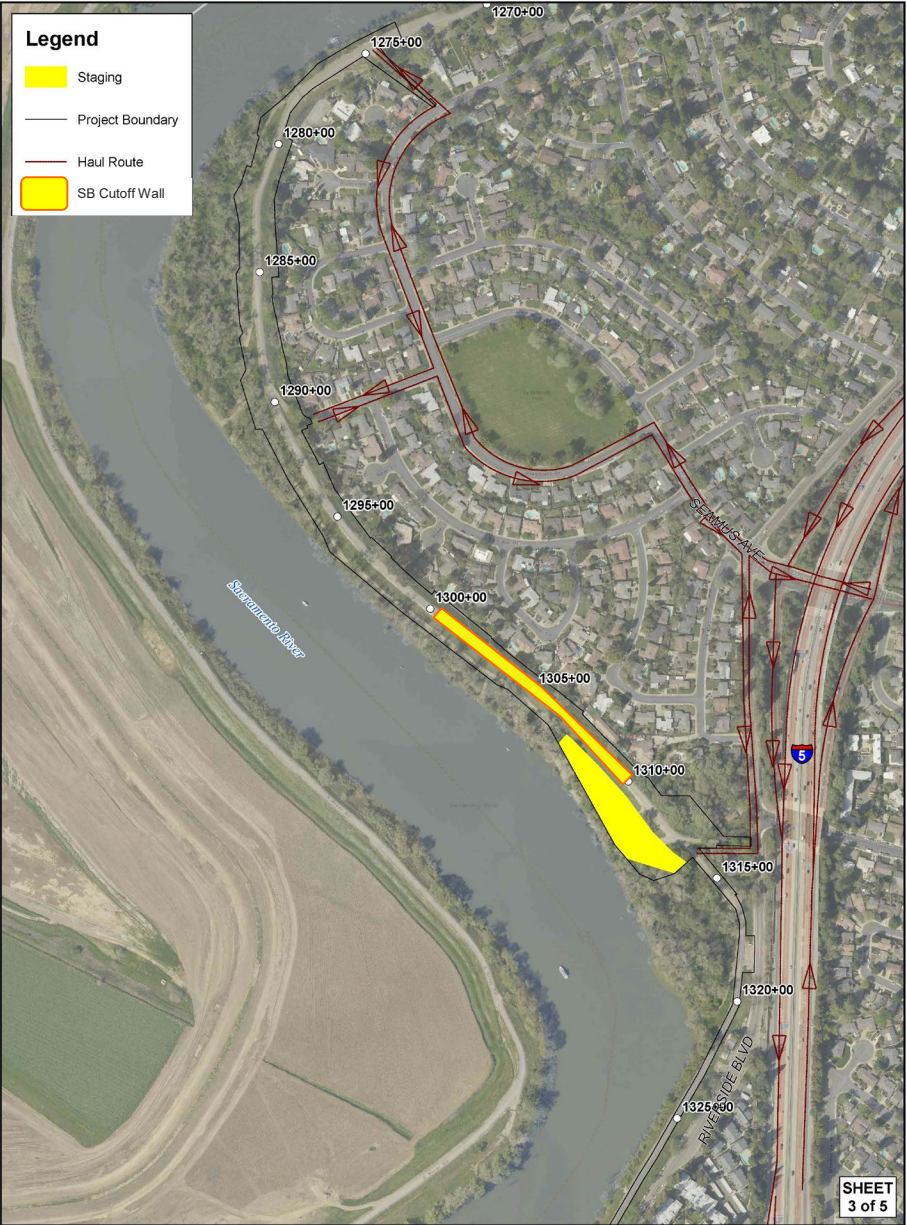


APRIL – DECEMBER 2021

Features	
Cutoff Wall	1,600 feet
Staging Area	Front Street; Broadway; Miller Park Overflow Parking Lot;
Access Points	Front Street; Broadway;



SREL C2 – LITTLE POCKET WORK AREA



APRIL – OCTOBER 2021	
Features	
Conventional Cutoff Wall	900 feet
Staging Area	Waterside of Levee;
Access Points	Piedmont Drive; Seamas Ave; Riverside Blvd



SREL C2 – BIG POCKET WORK AREAS



Legend

- Staging
- Project Boundary
- Haul Route
- SB Cutoff Wall
- DMM Cutoff Wall
- SCCB Cutoff Wall



MARCH – OCTOBER 2021

Features	
Cutoff Wall	7,400 feet
Staging Area	Zacharias Park; North Point Way Green Space; Benham Way; Garcia-Bend Park
Access Points	Riverside Blvd; Zacharias Park; North Point Way

SREL C2 – BIG POCKET ACCESS & STAGING

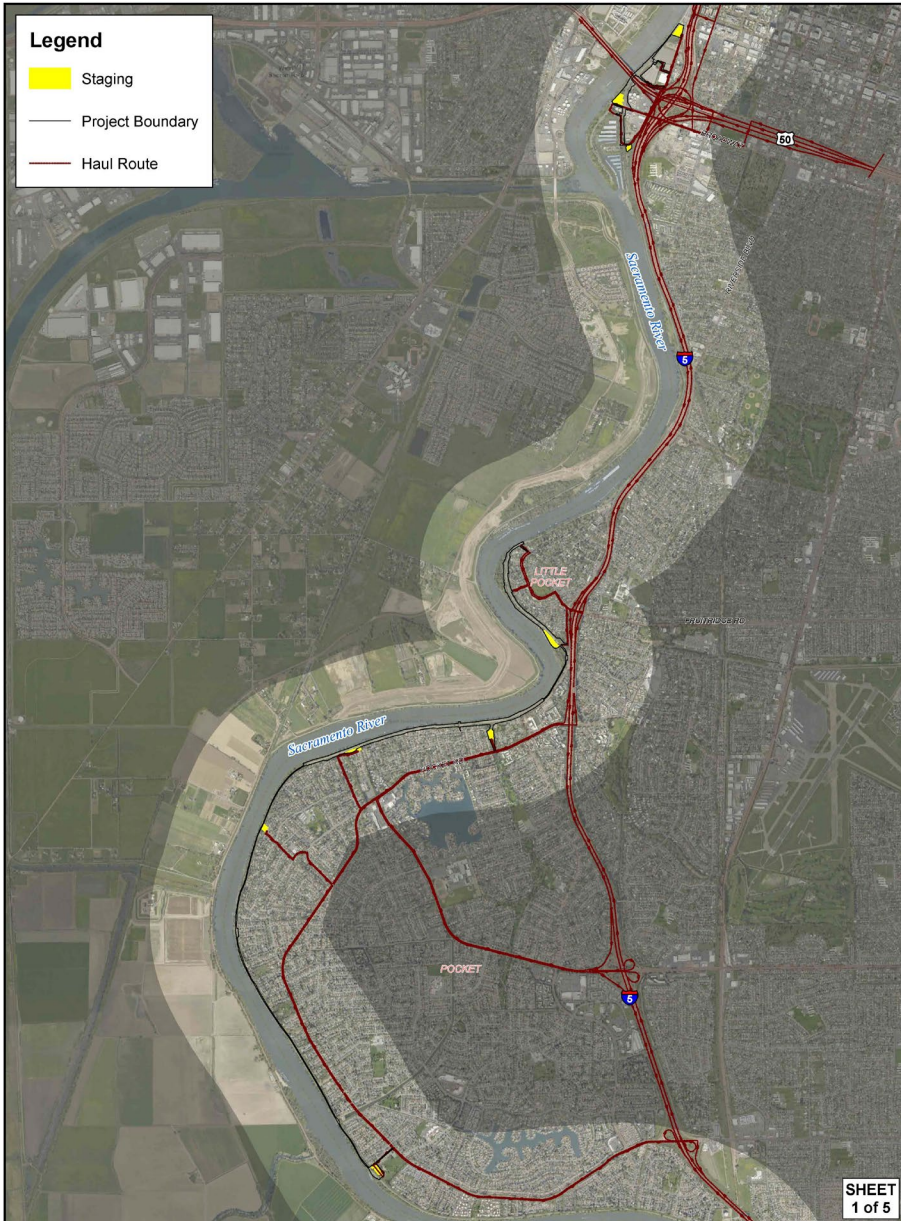


MARCH – OCTOBER 2021

Features	
Cutoff Wall	7,400 feet
Staging Area	Zacharias Park; North Point Way Green Space; Benham Way; Garcia-Bend Park
Access Points	North Point Way; Benham Way; Garcia-Bend Park



SREL C2 - HAUL ROUTES



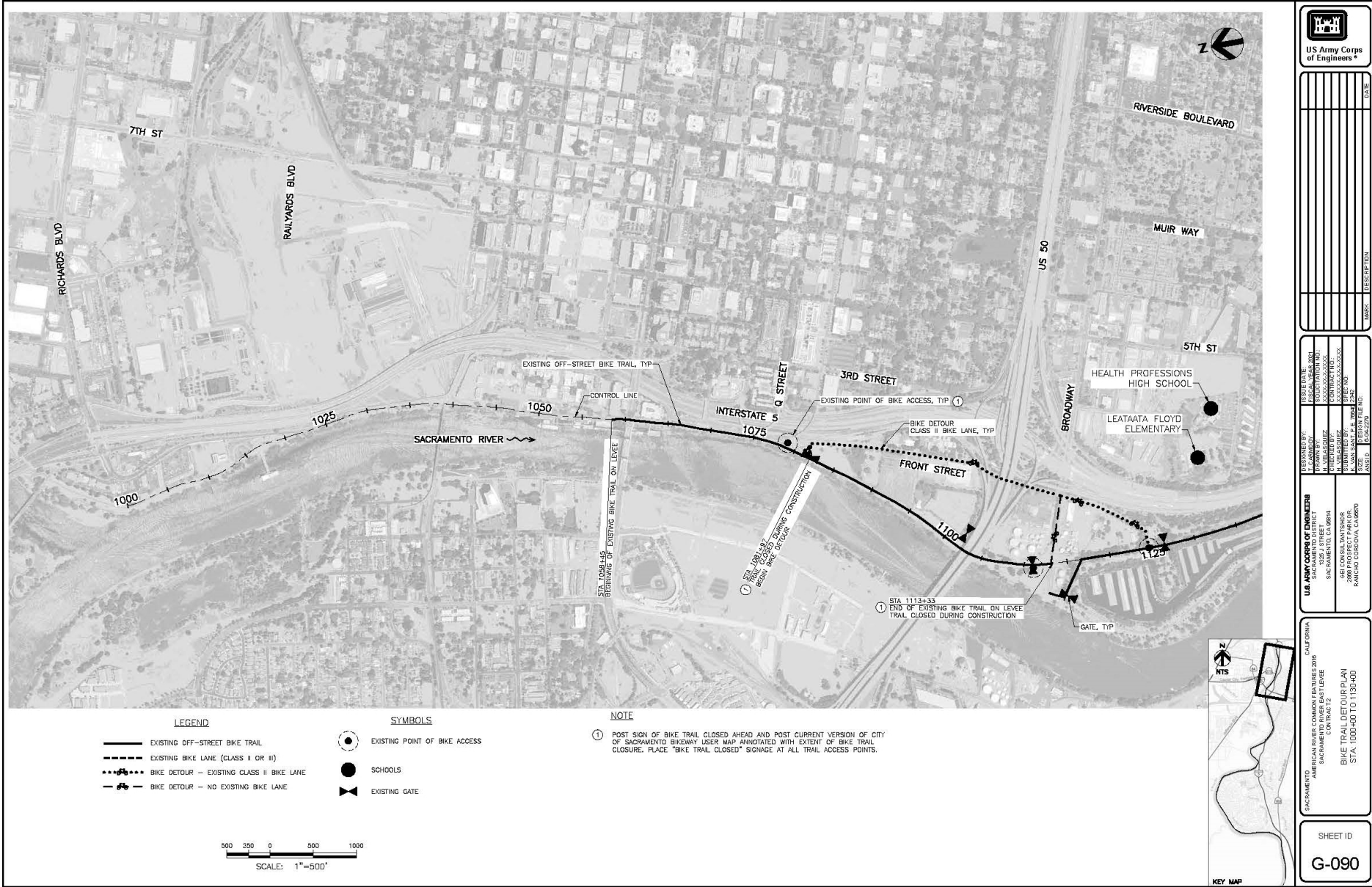
Limit impact to residential communities by traveling on highways, major streets, and levee crown to extent practical.

Highways and major streets include:

- Interstate 5
- Business 80 / HWY 50
- Front Street
- Broadway
- Piedmont Drive
- Seamas Avenue
- 43rd Avenue
- Riverside Boulevard
- Florin Road
- Pocket Road

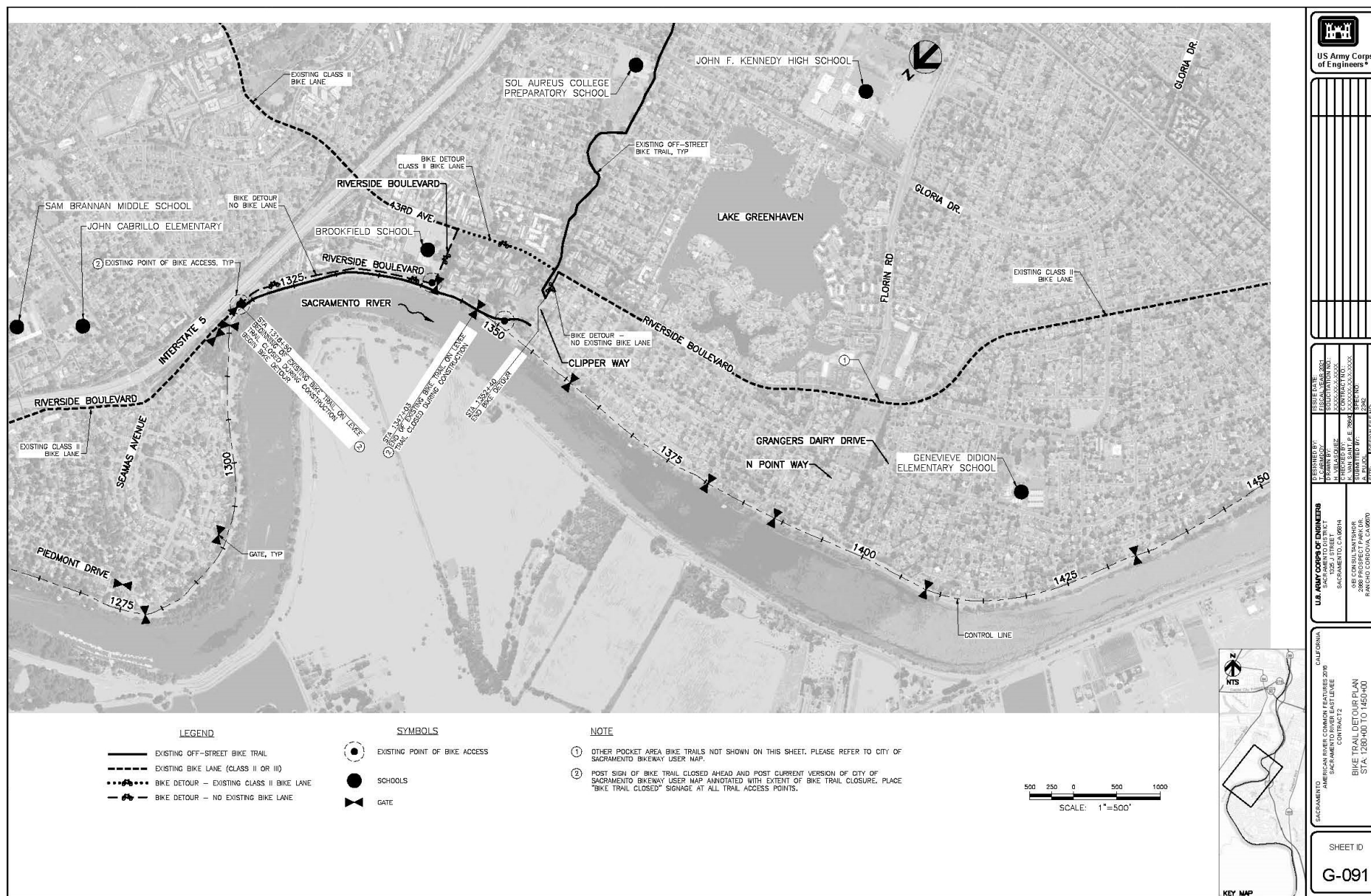


PROPOSED ALTERNATE BIKE ROUTE





PROPOSED ALTERNATE BIKE ROUTE





SUPPLEMENTAL EA/EIR

TOPIC AREAS ANALYZED



- Visual Resources
- Hydrology and Water Quality
- Vegetation and Wildlife
- Fisheries
- Special Status Species
- Cultural Resources
- Transportation and Circulation
- Air Quality
- Greenhouse Gas Emissions and Energy Consumption
- Noise
- Recreation
- Public Utilities and Service Systems
- Hazards and Hazardous Materials

IMPACTS



Biking

Bike trail Closed from April 2021 to October 2021:

- Under Pioneer Bridge
- North End of Pocket

Bike detours will be put in place.

Boating & Fishing

Miller Park:
Northern parking lot – closed April 2021 to October 2021
Boat Launch – No closure anticipated

Garcia Bend Boat Launch – Potentially closed from March 2021 – October 2021

Parks

Full Closure of Ellsworth Zacharias and North Point Way green space from April 2021 to October 2021

MITIGATION MEASURES



Detour Routes



Vibration Monitoring



Dust Control



Water & Air Quality Monitoring

VEGETATION & WILDLIFE



Source: Cornell Lab

Trimming and Removing Trees Outside of
Bird Nesting Season and to Protect Bats



Source: USFWS

Comprehensive Monitoring
by Qualified Biologists



Source: Thomas Dunklin

No impact to fisheries



Source: workzonesafety.com

Night Lighting that Reduces
Impacts on Nocturnal Wildlife

HABITAT MITIGATION SITE COMPLETE



Beach Stone Lakes Mitigation Site (24.2 acres)

- Northern Woodland – 18.5 acres (YBCU)
- Southern Woodland – 5.7 acres (VELB and YBCU)
- Establishment Maintenance to the end of 2024



A male valley elderberry longhorned beetle on elderberry.
Photo courtesy of Jon Katz and Joe Silveira, USFWS



CLOSURES AND NOTICES

Stay Informed about Temporary Road and Trail Closures:

- Subscribe to construction and traffic email updates at sacleveeupgrades.com

The screenshot shows the US Army Corps of Engineers Sacramento District Website. The header includes navigation links: About, Business With Us, Missions, Locations, Careers, Media, Library, Contact, and Coronavirus. A search bar is also present. The main content area features a large image of the Sacramento River with the text "Sacramento River Levees" overlaid. Below this, a sidebar on the left lists project overview sections: American River Levees, Sacramento River Levees, and Sacramento Wetlands. The main text area is titled "Levee improvements at six locations on tap for 2020" and provides details about the project, including the construction of approximately 3 miles of levee improvements and the completion of site preparation in January 2020. A red circle highlights the "Subscribe for Construction & Traffic email updates" link in the sidebar.

US Army Corps of Engineers Sacramento District Website

Missions / Civil Works / Sacramento Levee Upgrades / Sac River Levees

Sacramento River Levees

Project Overview

American River Levees

Sacramento River Levees

Sacramento Wetlands

Subscribe for Construction & Traffic email updates

Levee improvements at six locations on tap for 2020

The Sacramento Metropolitan area is one of the most at risk areas for flooding in the United States due to its location at the confluence and within the floodplain of two major rivers. The 1997 Sacramento flood events revealed deep under-seepage on the Sacramento River, including in areas that were remediated to address through-seepage with shallow cutoff walls in the early 1990s.

We are currently underway with construction on Sacramento River East Levee Contract 1, which includes construction of approximately 3 miles of levee improvements--to include a combination of seepage cutoff walls and seepage berms--at 5 locations along the Sacramento River East Levee. Site preparation was completed in January 2020, and levee construction is scheduled to continue through December 2020.

A 400-foot-long seepage berm was constructed earlier this year on the landside levee adjacent to Front St, wrapping up in January 2020. In total, the American River Common Features 2016 project is expected to construct approximately 9 miles of slurry cutoff walls along the Sacramento River East Levee, and will add erosion protection at a number of locations.



Source: Sacramento County Regional Parks



ANTICIPATED CONSTRUCTION SCHEDULE

25

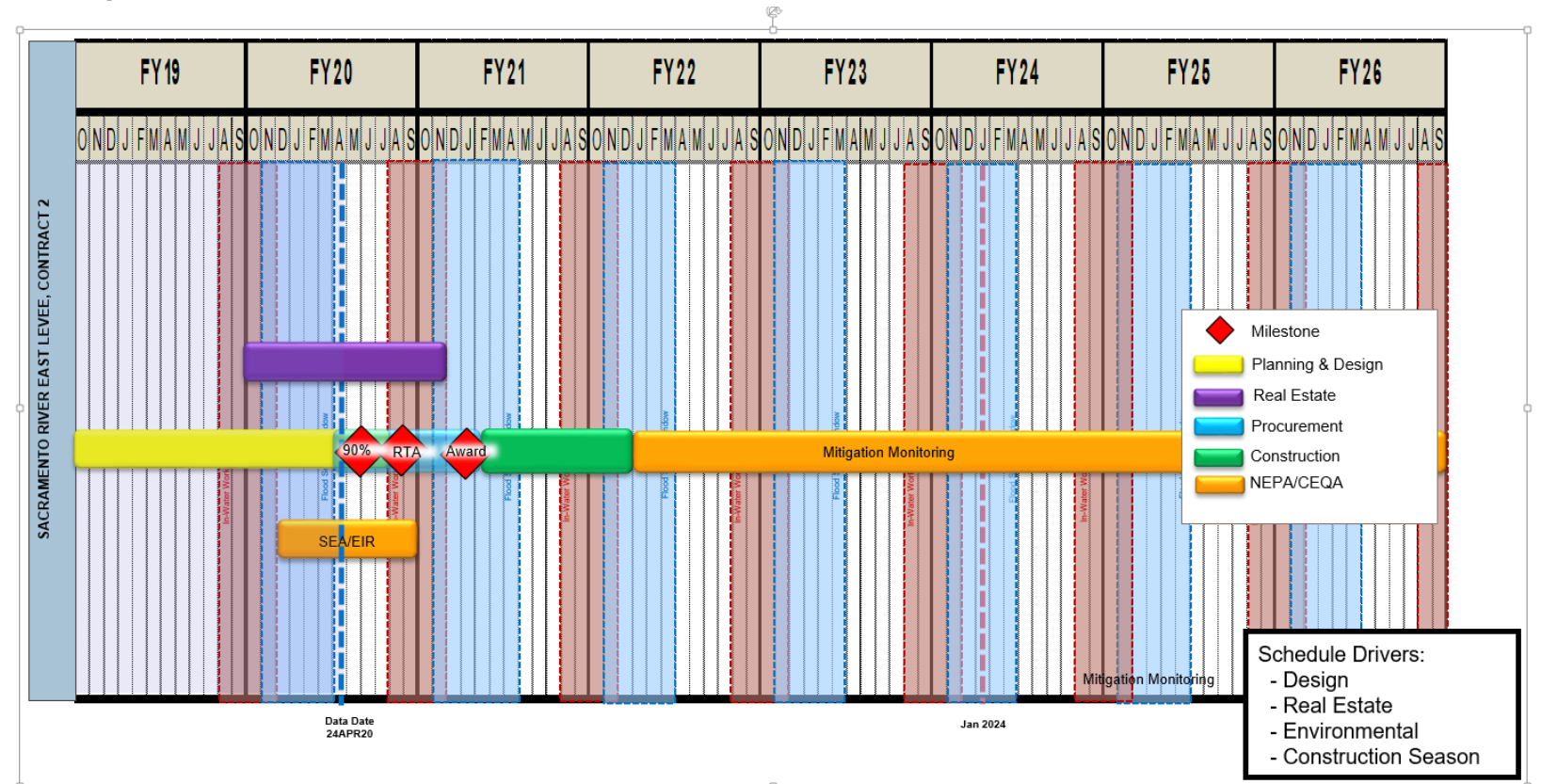


Pre-construction (November 2020 - March 2021)

- Site prep, cut and trim trees

Site Construction (Summer 2021 - Fall/Winter 2021)

- Install seepage/stability levee improvements





NEPA/CEQA COMMENTS



Draft Supplemental EA/EIR is available at:

sacleveeupgrades.com

Public Comment Period: July 8 – August 22, 2020

Final Document Adopted/Certified: Fall/Winter 2020

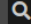


FOR MORE INFORMATION...

27



[About](#) [Business With Us](#) [Missions](#) [Locations](#) [Careers](#) [Media](#) [Library](#) [Contact](#) [Coronavirus](#)

Search Sacramento []

US Army Corps of Engineers Sacramento District Website

[Home](#) / [Missions](#) / [Civil Works](#) / [Sacramento Levee Upgrades](#) / [Sac River Levees](#)



Project Overview

American River Levees

Sacramento River Levees

Sacramento Weir

Subscribe for Construction
& Traffic email updates



Project Information Tri-fold



Levee improvements at six locations on tap for 2020

The Sacramento Metropolitan area is one of the most at risk areas for flooding in the United States due to its location at the confluence and within the floodplain of two major rivers. The 1997 Sacramento flood events revealed deep under-seepage on the Sacramento River, including in areas that were remediated to address through-seepage with shallow cutoff walls in the early 1990s.

We are currently underway with construction on Sacramento River East Levee Contract 1, which includes construction of approximately 3 miles of levee improvements--to include a combination of seepage cutoff walls and seepage berms--at 5 locations along the Sacramento River East Levee. Site preparation was completed in January 2020, and levee construction is scheduled to continue through December 2020.

A 400-foot-long seepage berm was constructed earlier this year on the landside levee adjacent to Front St, wrapping up in January 2020. In total, the American River Common Features 2016 project is expected to construct approximately 9 miles of slurry cutoff walls along the Sacramento River East Levee, and will add erosion protection at a number of locations.

sacleveeupgrades.com



HOW TO PROVIDE COMMENTS

1. Comment now:

Provide audio comments at this webinar (state name and affiliation)

Use WebEx “raise hand” function by clicking on the three dots

2. Write:

Miles Claret

Department of Water Resources

3464 El Camino Avenue Room 150

Sacramento, CA 95821

OR

Public Affairs Office

U.S. Army Corps of Engineers

1325 J Street Room 1513

Sacramento, CA 95814

3. Email:

PublicCommentARCF16@water.ca.gov

spk-pao@usace.army.mil

use “SREL Contract 2” in subject line