

AMERICAN RIVER WATERSHED COMMON FEATURES, WATER RESOURCES DEVELOPMENT ACT OF 2016, SACRAMENTO RIVER EAST LEVEE (SREL) CONTRACT 4

Draft Supplemental Environmental Assessment/ Environmental Impact Report

Sacramento District
US Army Corps of Engineers

13JUL2022



US Army Corps
of Engineers®



Source: U.S. Army Corps of Engineers, Sacramento District



ON-LINE COMMUNICATION TIPS



If you have joined by computer and computer audio, you will only see the panelist and the presentation deck.

For audio problems help, use the Q&A chat at the bottom of the screen

Computer Use	Phone Only Use
<ul style="list-style-type: none">- You will be muted upon entry- To “raise hand”, click on three dots- Please lower hand after comment- We will un-mute you during Q&A- To write comments, click on the Q&A icon at the bottom of the screen	<ul style="list-style-type: none">- To raise your hand, use *9- We will un-mute you.



NEPA/CEQA COMMENTS



Draft Supplemental EA/EIR is available at:
sacleveeupgrades.com

Public Comment Period: June 15 – August 1, 2022

CEQA Certification: Expected October 2022

Final Document: Expected November 2022



AGENDA



American River Watershed Common Features 2016 Project

- Final Environmental Impact Statement/ Final Environmental Impact Report

Sacramento River East Levee Contract 4

- Supplemental Environmental Impact Report/ Environmental Assessment (SEA/SEIR)

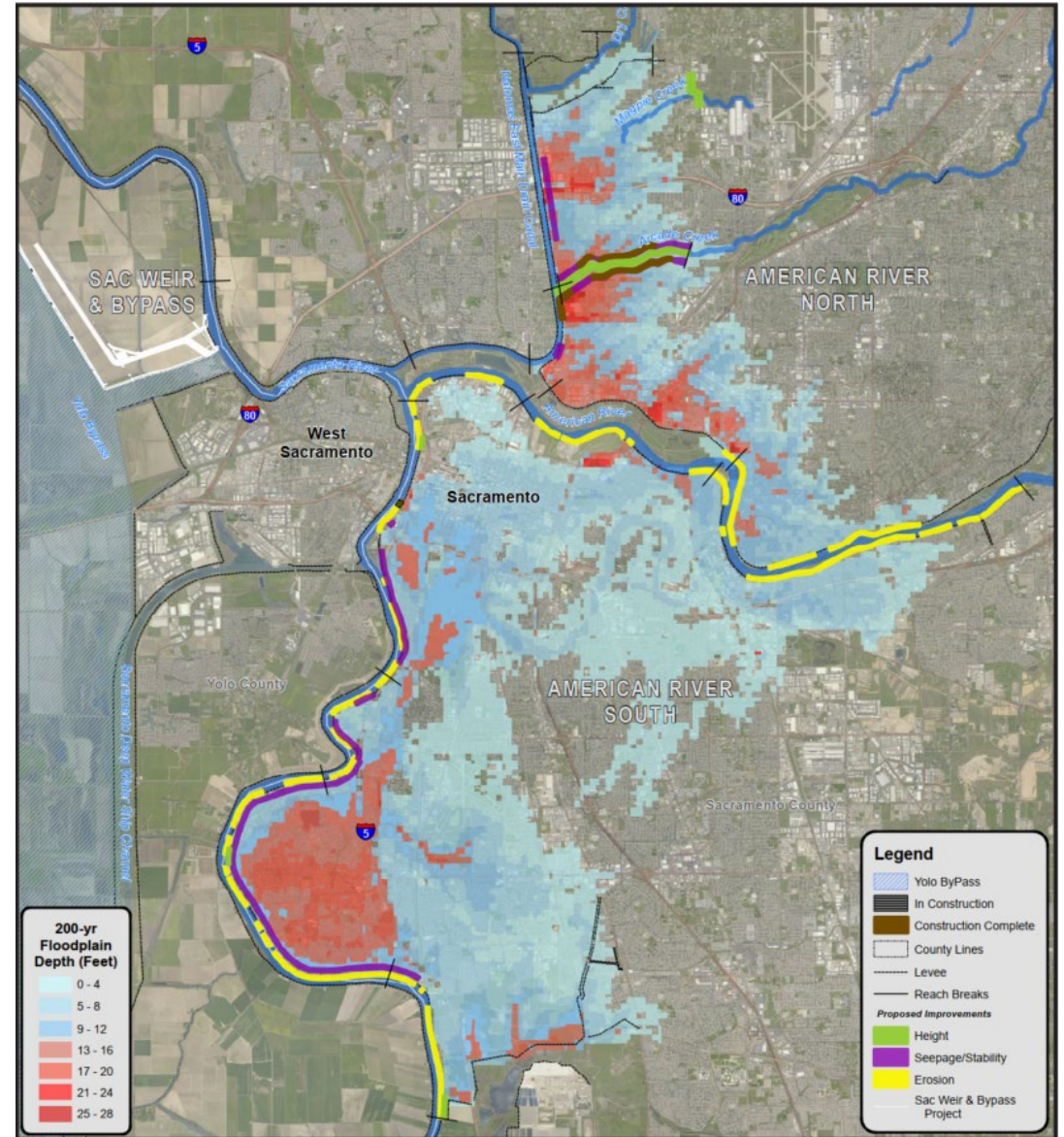
Opportunities for Public Input



AMERICAN RIVER COMMON FEATURES (ARCF) 2016



- Water Resources Development Act of 2016
- Emergency Supplemental Appropriations in the Bipartisan Budget Act of 2018





PROJECT PARTNERS



Federal Government



**US Army Corps
of Engineers®**

State Government



Central Valley
Flood Protection
Board



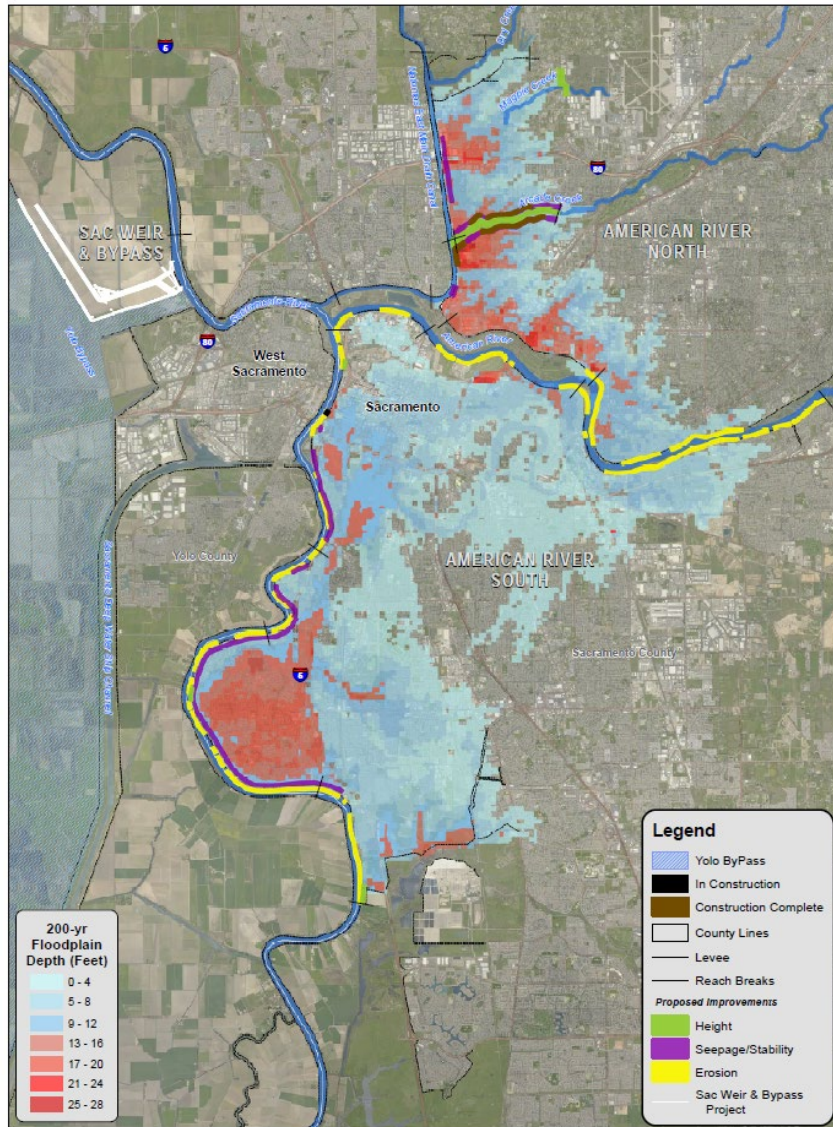
Department of
Water
Resources

Local Government





AMERICAN RIVER COMMON FEATURES (ARCF) 2016



SUPPLEMENTAL TARGET JAN 2024

Authorized Plan

Features	
North Area Streams Seepage	4 miles
Sacramento River Seepage	9 miles
American River Erosion	11 miles
Sacramento River Erosion	10 miles
Levee Stabilization	5 miles
Levee raises	5 miles
Widen Sacramento Weir and Bypass	1500 feet
Reduces Risk	500,000 people
	125,000 structures
	\$62 billion protection



CAUSES OF LEVEE FAILURE

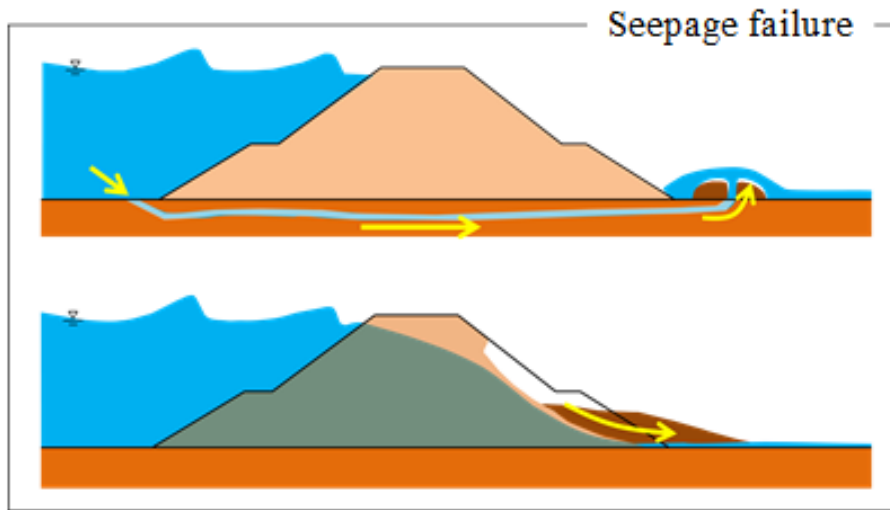
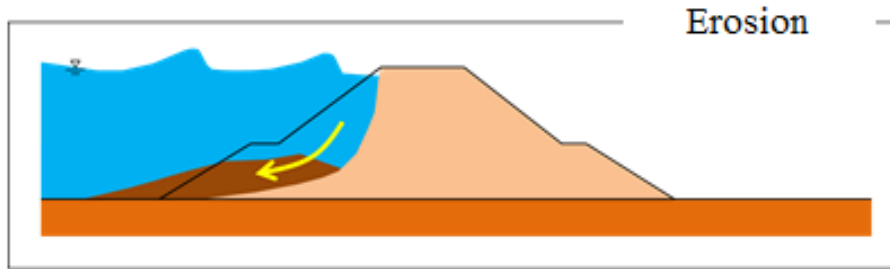
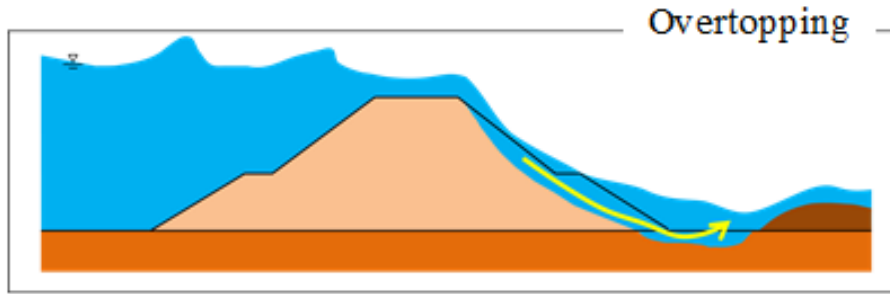


Image courtesy of PWRI Web Magazine



CAUSES OF LEVEE FAILURE

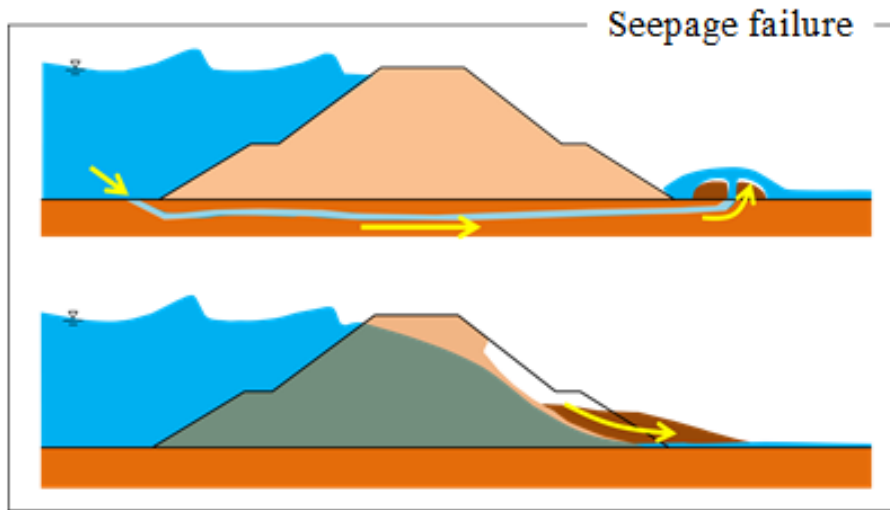
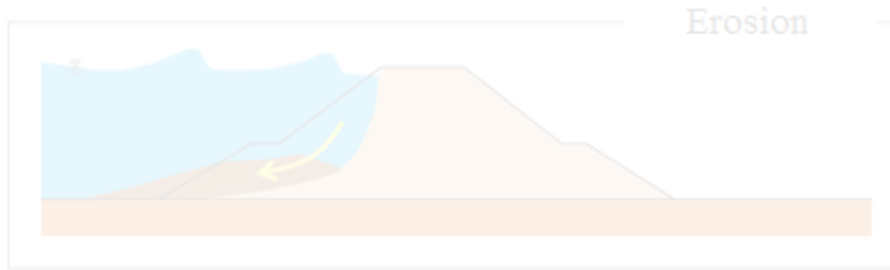
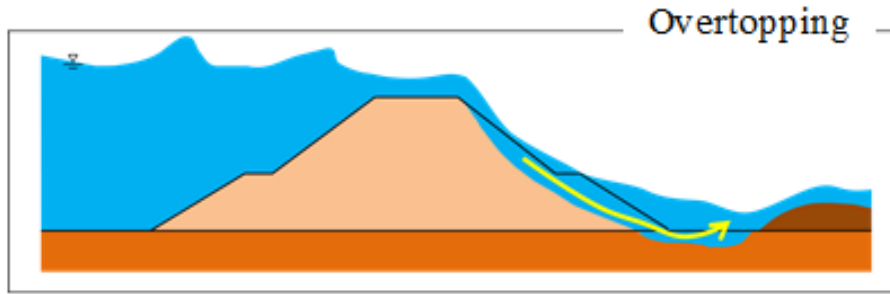


Image courtesy of PWRI Web Magazine



CAUSES OF LEVEE FAILURE

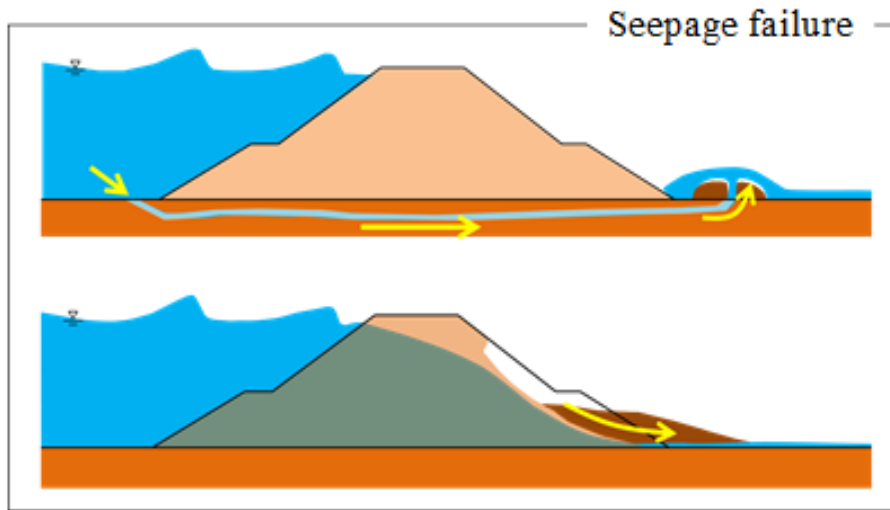
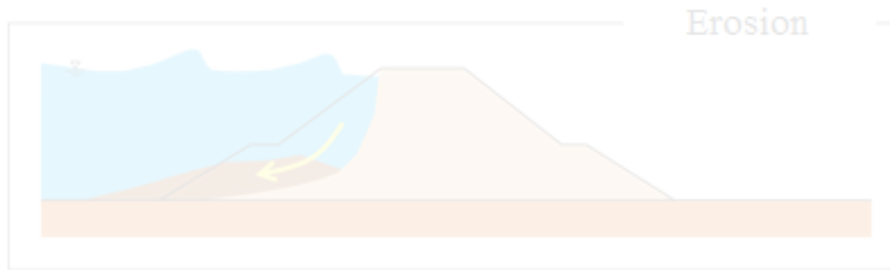
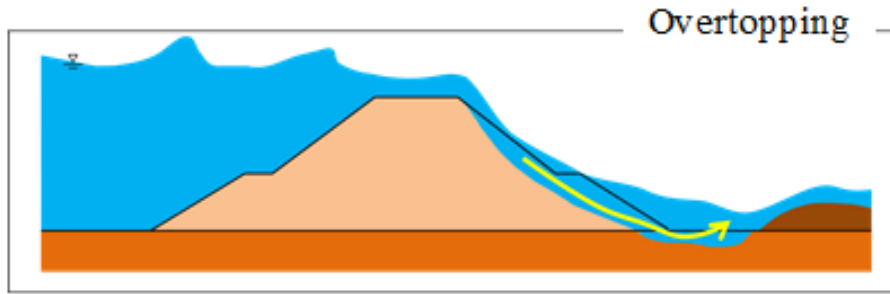


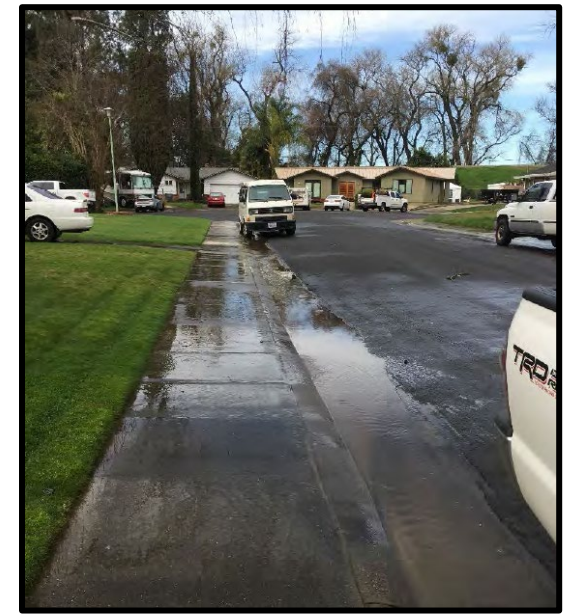
Image courtesy of PWRI Web Magazine



Atchison County, MO - 2011



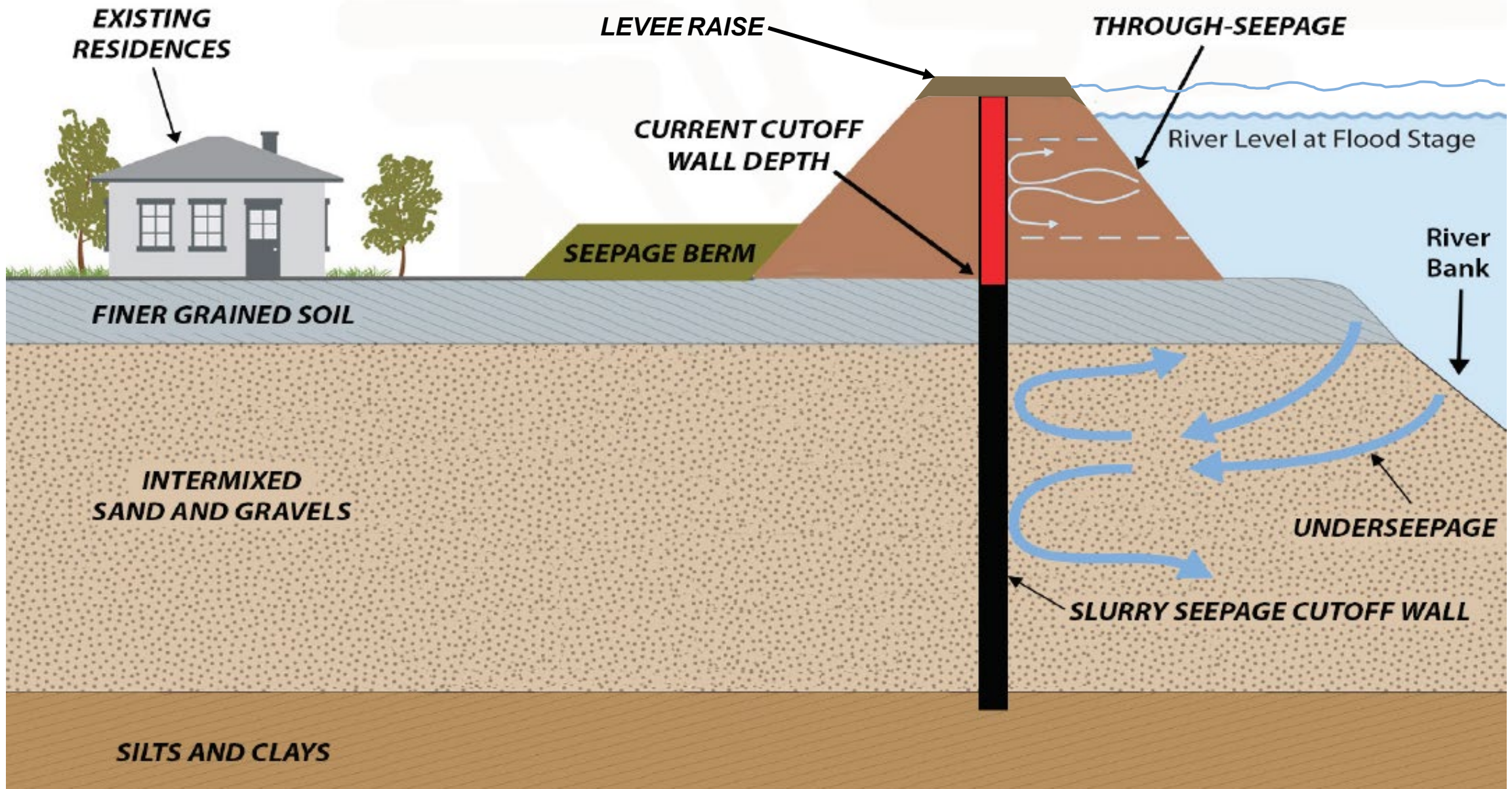
Natomas Garden Hwy - 1986



2017 Flood - Riverview Court, Little Pocket.



SEEPAGE & STABILITY ISSUES ADDRESSED

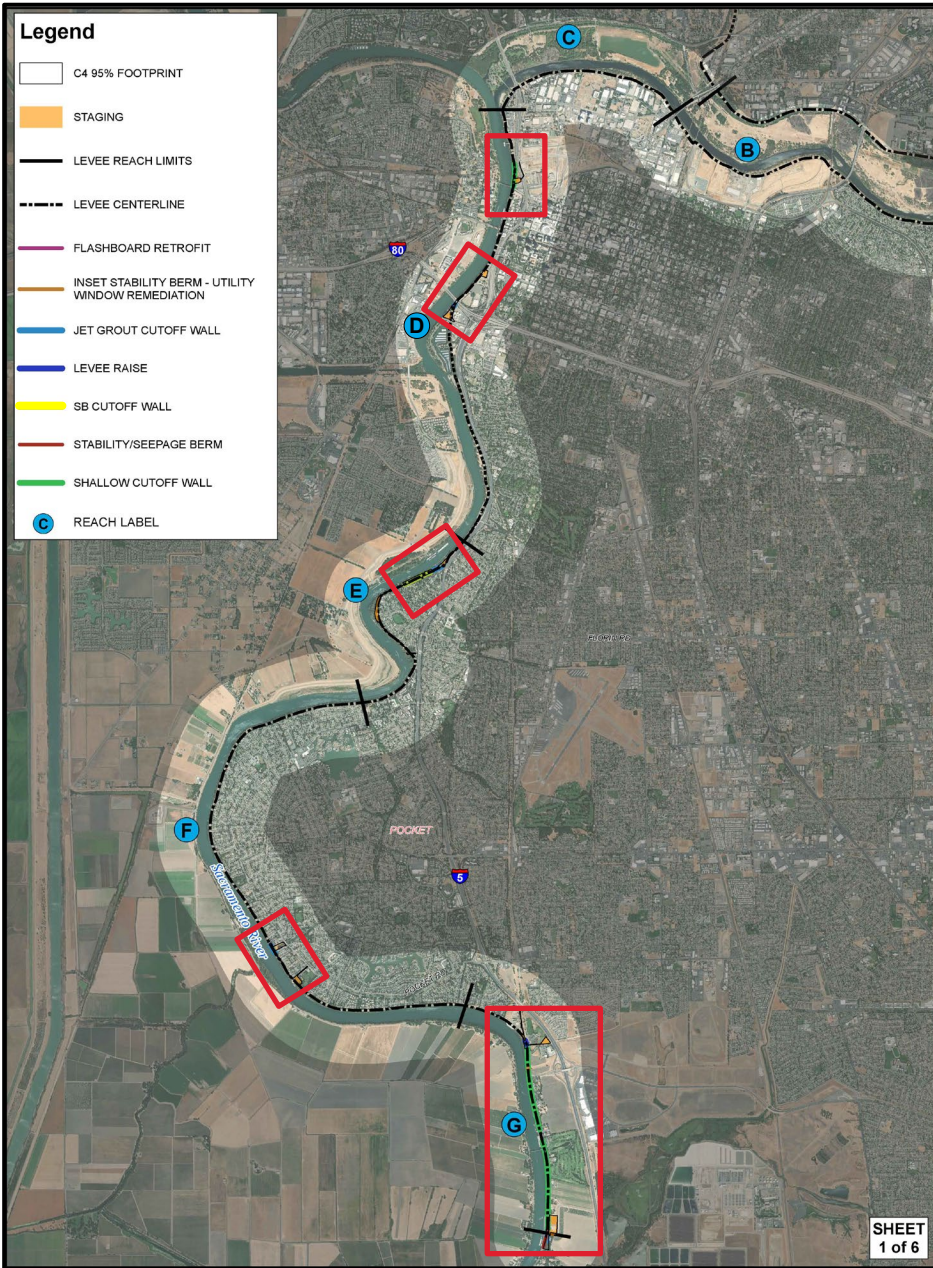


SILTS AND CLAYS



U.S. ARMY

SREL CONTRACT 4 OVERVIEW



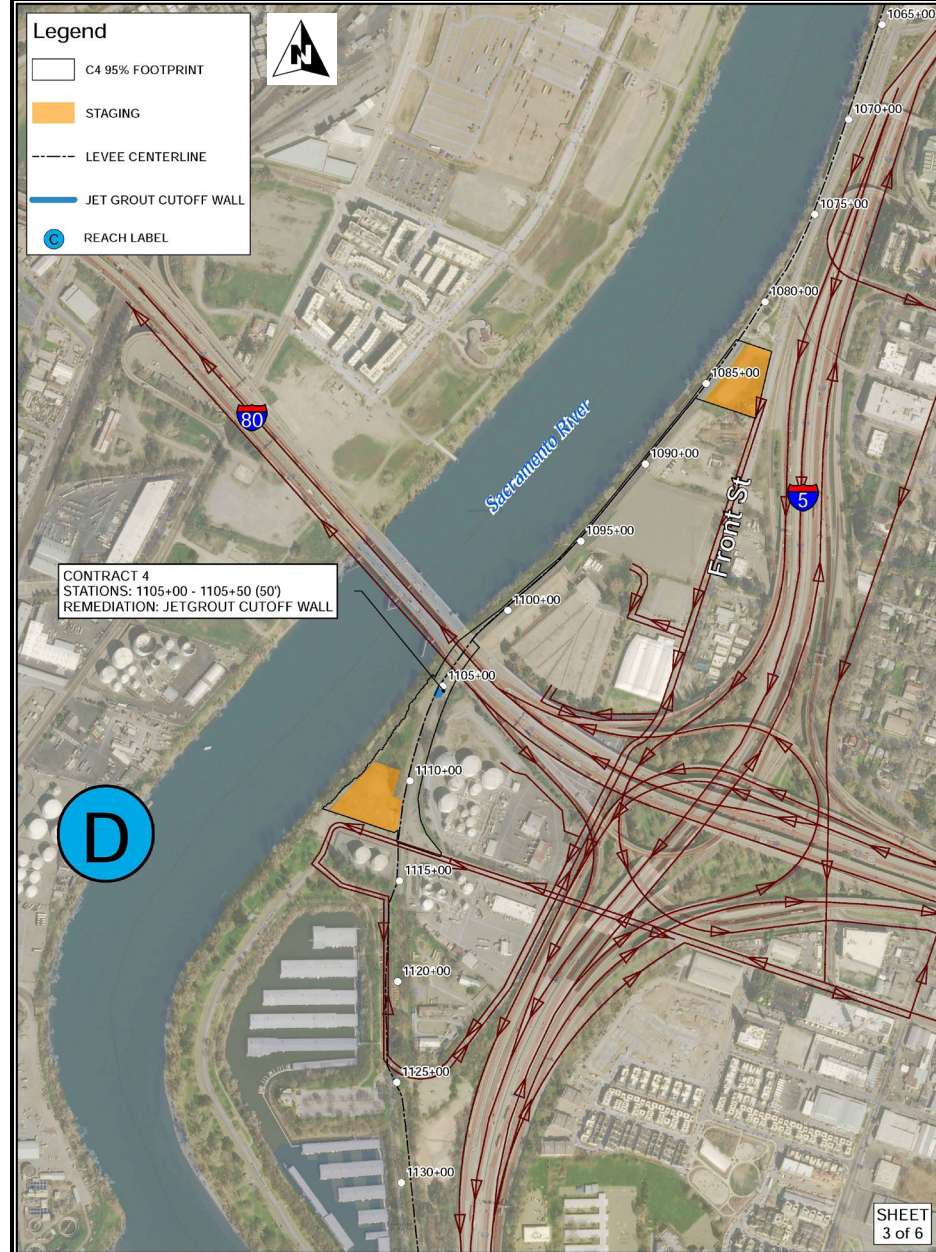
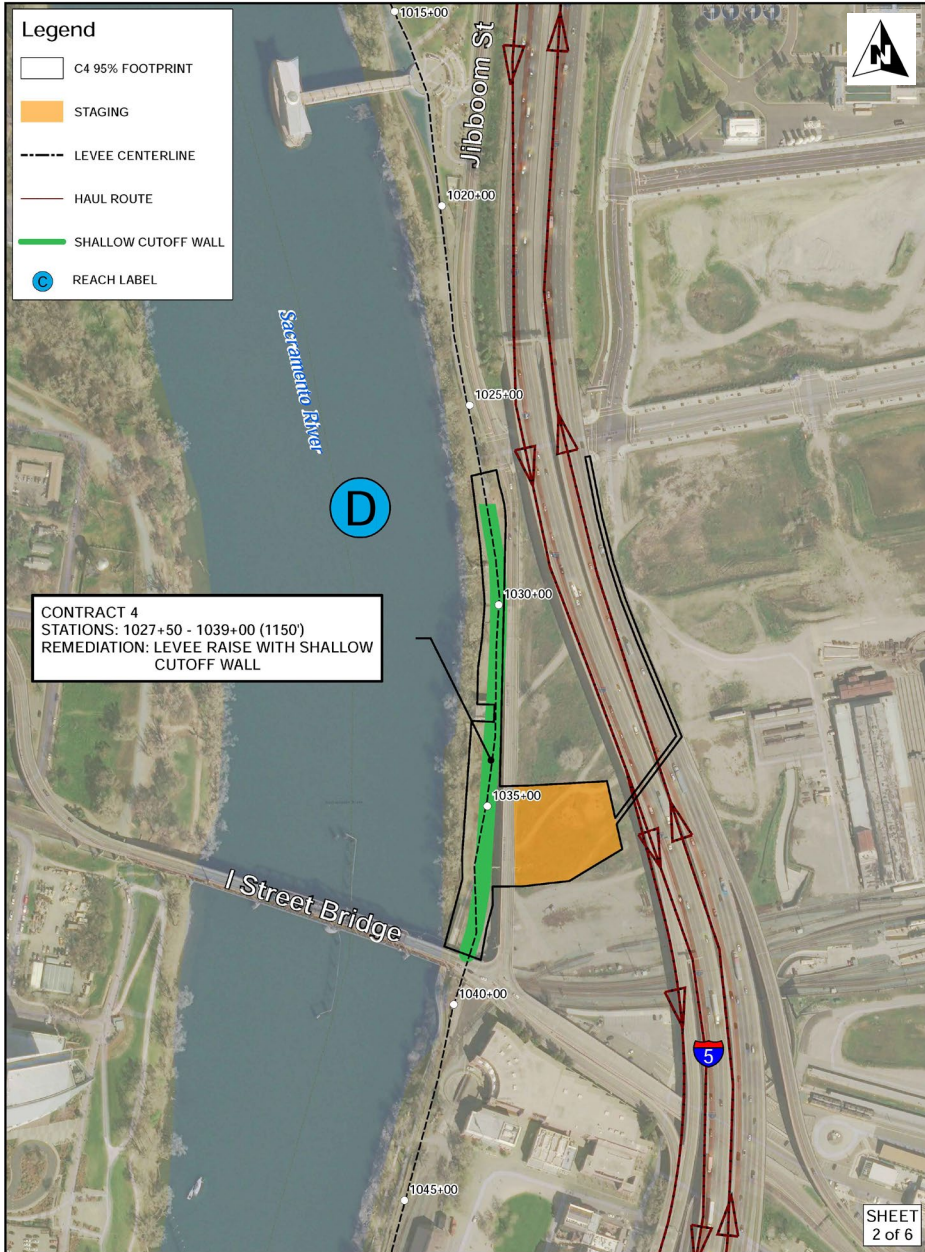
- 2.3 Miles of Seepage Cutoff Wall
- 0.12 Miles of Berm
- 0.37 Miles of Levee Raise

SREL Contract 4 Remediation Summary

GRR Reach ID	SREL Reach ID	Remediation Stationing		Remediation Length (ft)	Remediation Type
		Start	End		
D	A	1027+50	1039+00	1150	Levee Raise w/ Shallow Cutoff Wall
E	10 - 11-2	1244+70	1250+00	530	Jet Grout Cutoff Wall
	11-3	1250+00	1261+75	1175	SB Cutoff Wall
F	23	1530+30	1534+00	370	Jet Grout Cutoff Wall
G	N	1676+00	1678+00	200	Levee Raise
		1678+00	1710+29	3229	Shallow Cutoff Wall
		1689+00	1690+00	100	Seepage and Stability Berm
	O	1710+29	1719+60	931	Shallow Cutoff Wall
		1725+50	1728+75	325	
	P	1730+50	1766+00	3550	Levee Raise
1766+00		1772+00	600		
NBLL		1770+20	1774+00	380	Jet Grout Cutoff Wall
		1773+00	1778+20	520	Seepage and Stability Berm

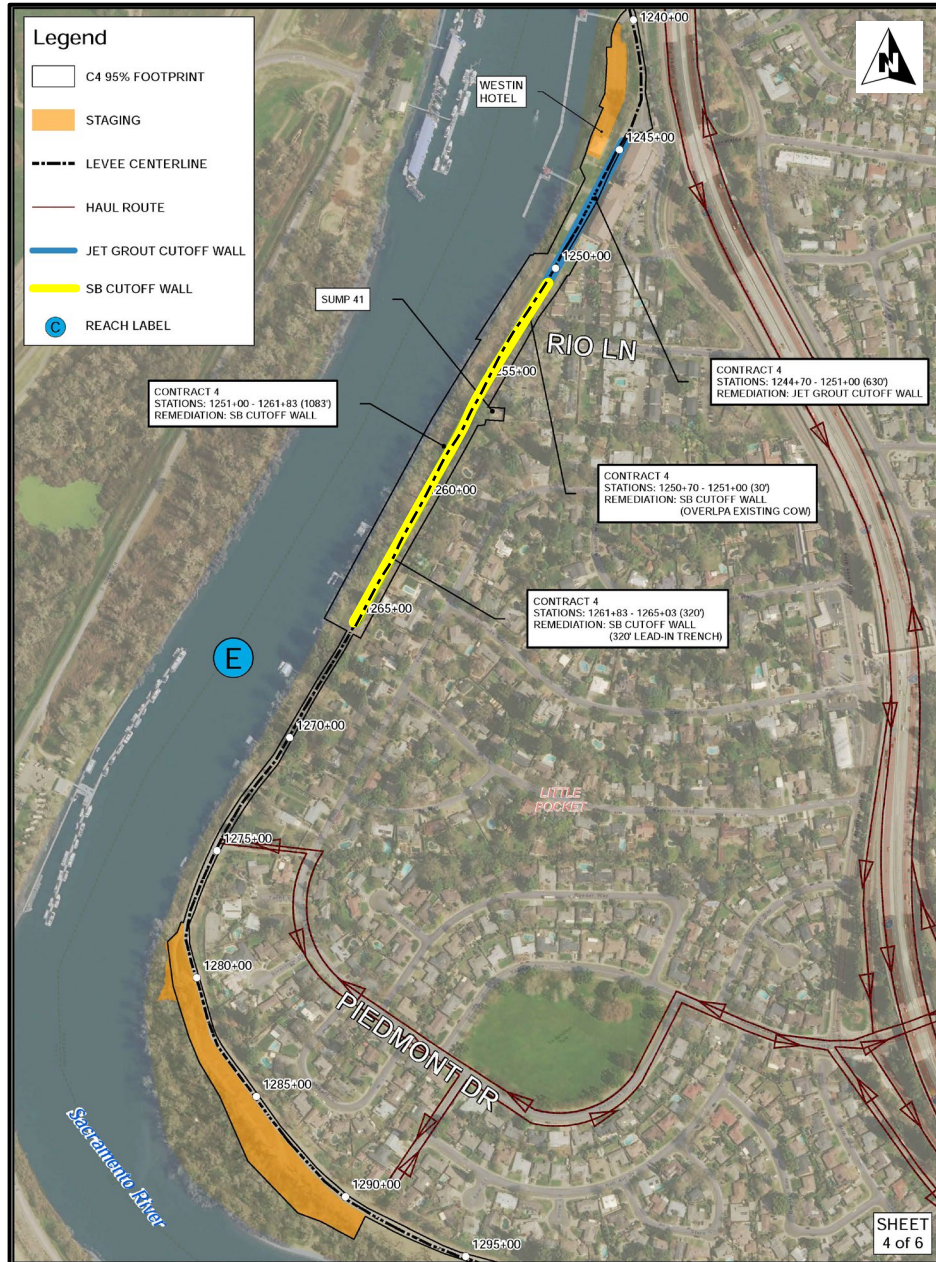


SREL CONTRACT 4 OVERVIEW



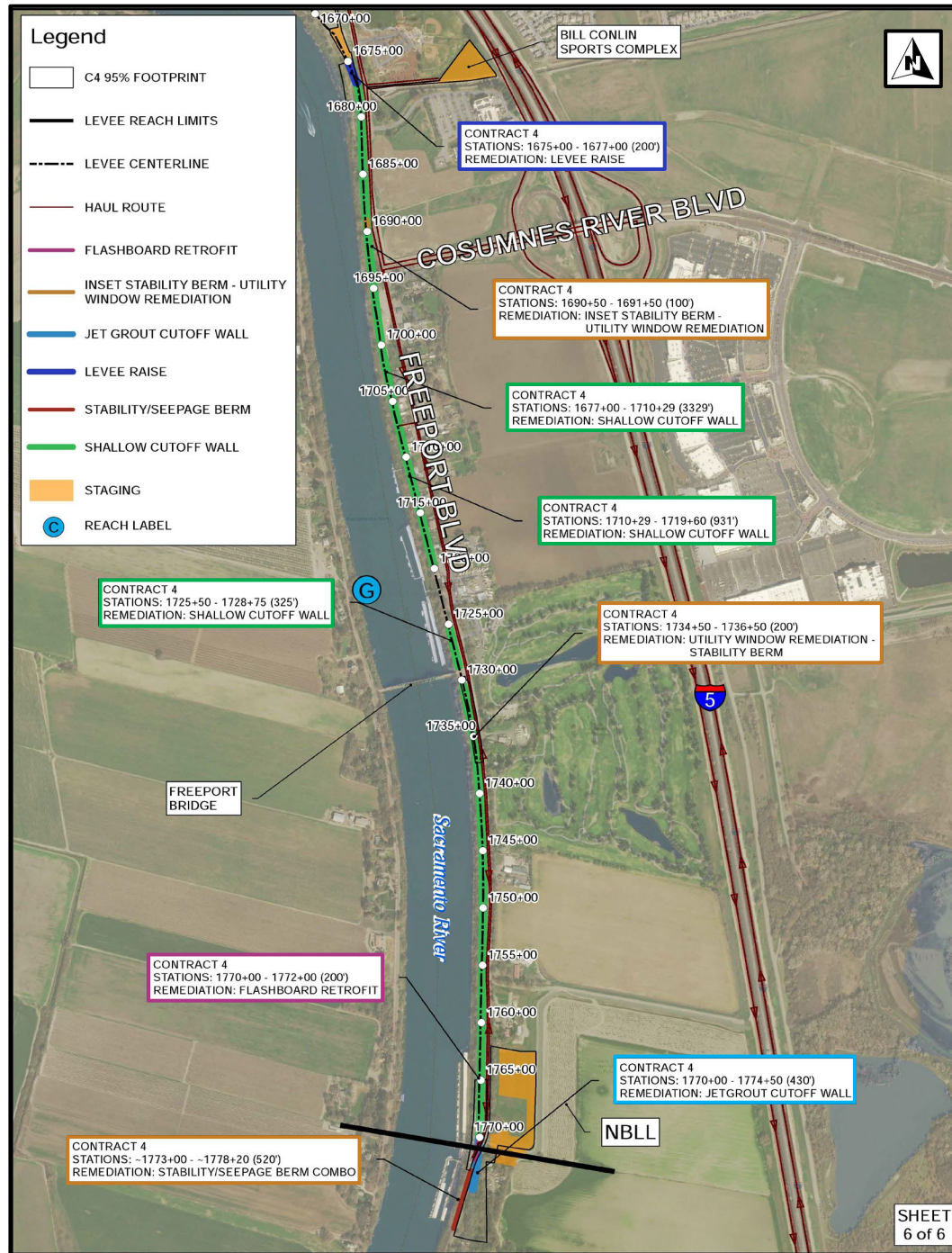


SREL CONTRACT 4 OVERVIEW





C4 OVERVIEW

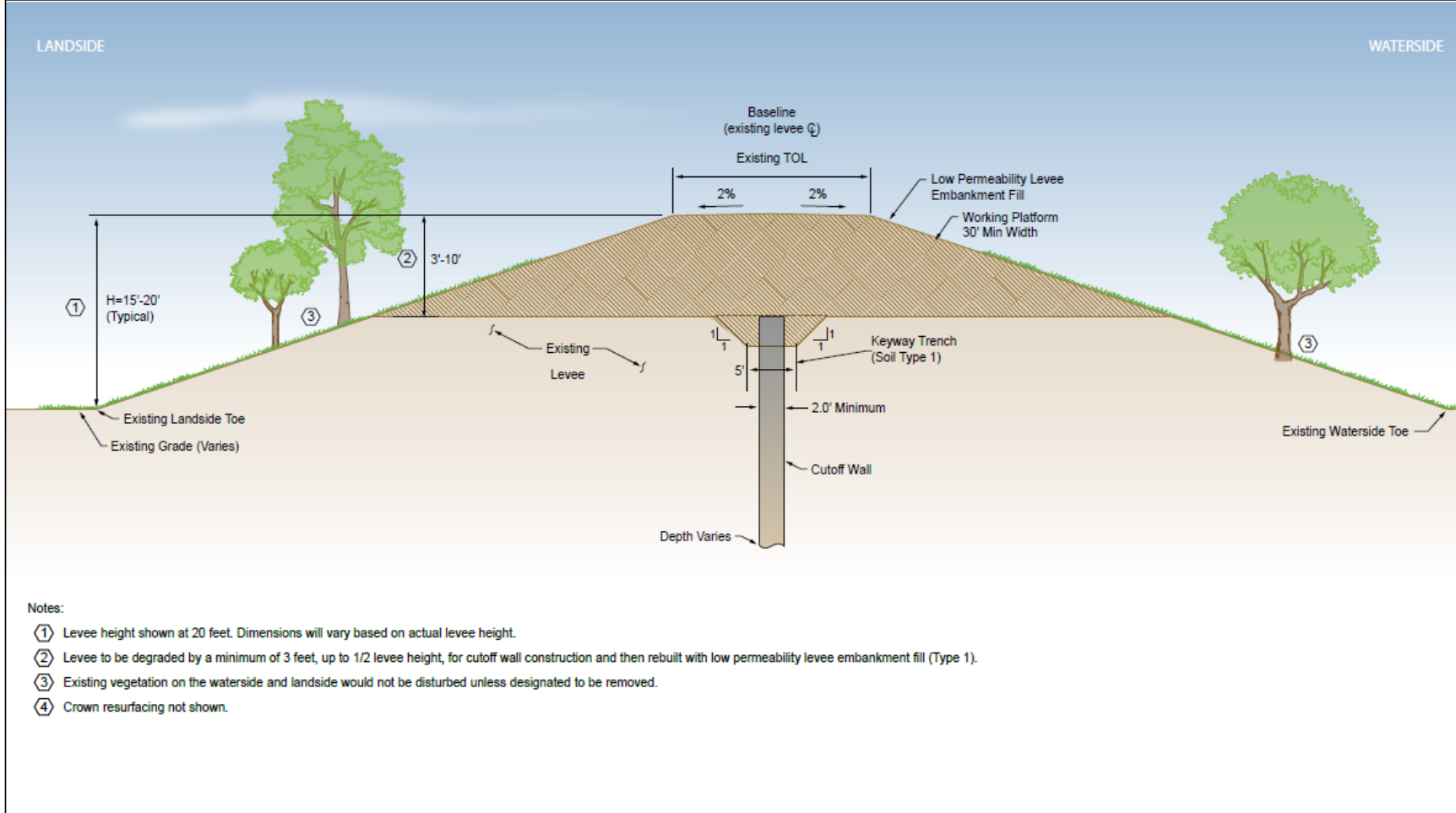




TYPICAL CUTOFF WALL CROSS SECTION



CONTRACT 4 CONVENTIONAL (OPEN TRENCH) CUTOFF WALL



Source: GEI & HDR 2014, adapted by GEI 2019



2020 Contract 1 SB Cutoff Wall Excavation



2020 Contract 1 SB Wall Material Mixing



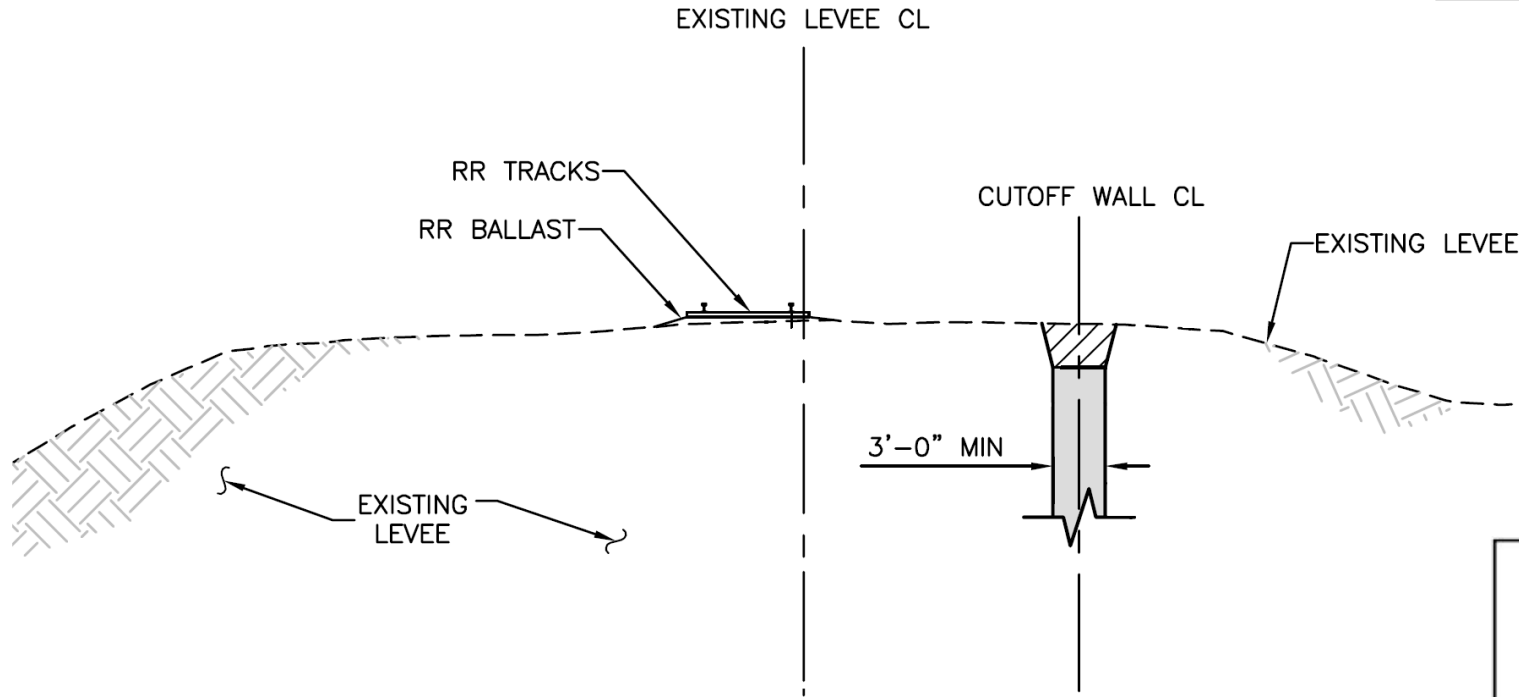
TYPICAL CUTOFF WALL CROSS SECTION



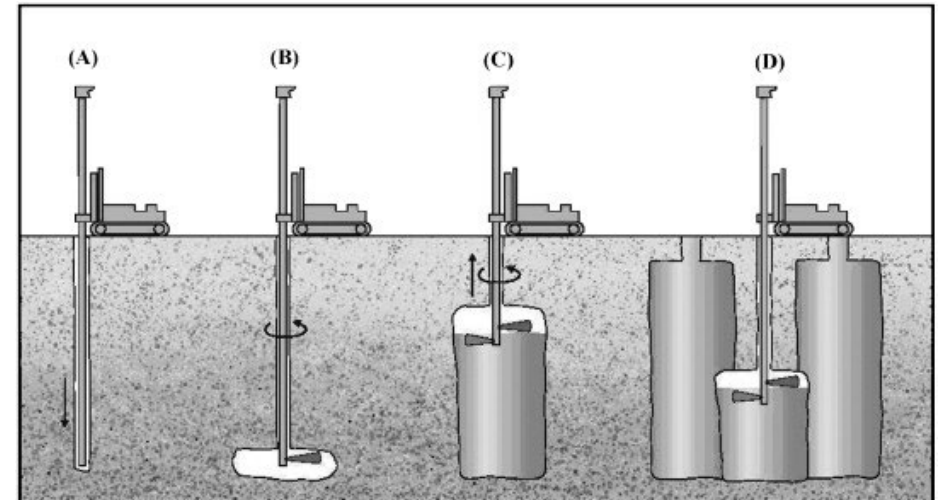
WORK AREAS NORTH OF MILLER PARK – JET GROUT CUTOFF WALLS

LANDSIDE

WATERSIDE



Source: Wikimedia.org



Source: Science Direct <https://doi.org/10.1016/j.jrmms.2008.10.005>



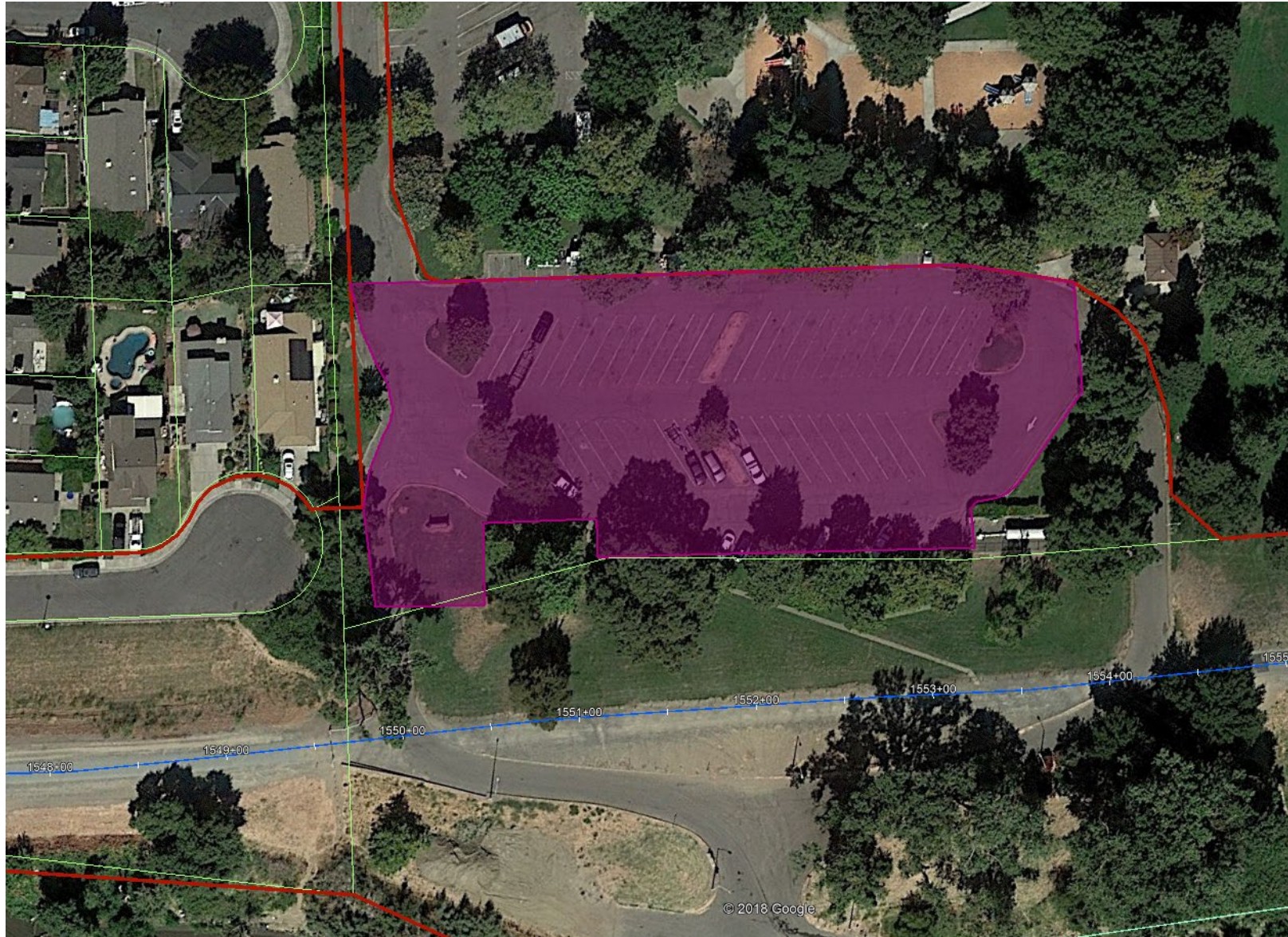
SREL C4 –ACCESS, STAGING, AND HAUL ROUTES



MARCH – DECEMBER 2023	
Cutoff Wall	10,580 feet
Staging Areas	<ul style="list-style-type: none">• Interior Drainage Sump 132• Garcia Bend Park• Bill Conlin Sports Complex (Empty field)• 1 Waterside Staging Areas• Railyards (empty field)• Front St• Broadway• Westin Hotel Valet Parking Lot• Landside Near Cosumnes River Blvd• North Beach Lake Levee Empty
Access Points	<ul style="list-style-type: none">• Jibboom Street• Railyards Blvd• Front Street• Broadway• Sutterville Road• Riverside Blvd• Pocket Rd• Interior Drainage Sump 132• Garcia-Bend Park• Freeport Blvd



GARCIA-BEND PARK STAGING AREA



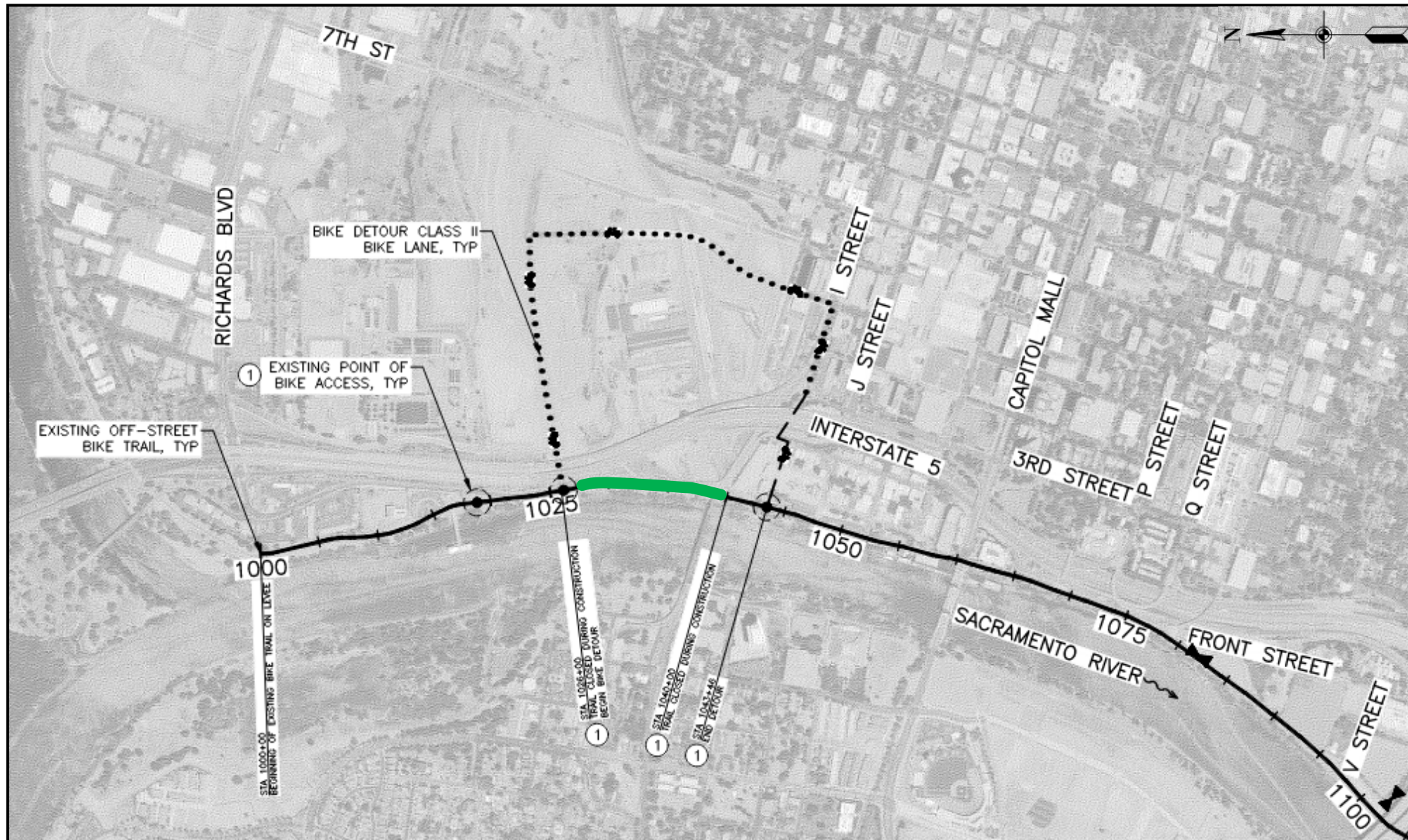
- Owner: City of Sacramento
- Approx. 1.4 acres
- Within Garcia-Bend Park boat launch parking lot

- Restoration of the boat launch Parking Lot following completion of the jet grout cutoff wall at the Pocket Canal levee segment.

- Construction of the jet grout cutoff wall and parking lot restoration may require temporary closures of the boat launch at its parking lot.

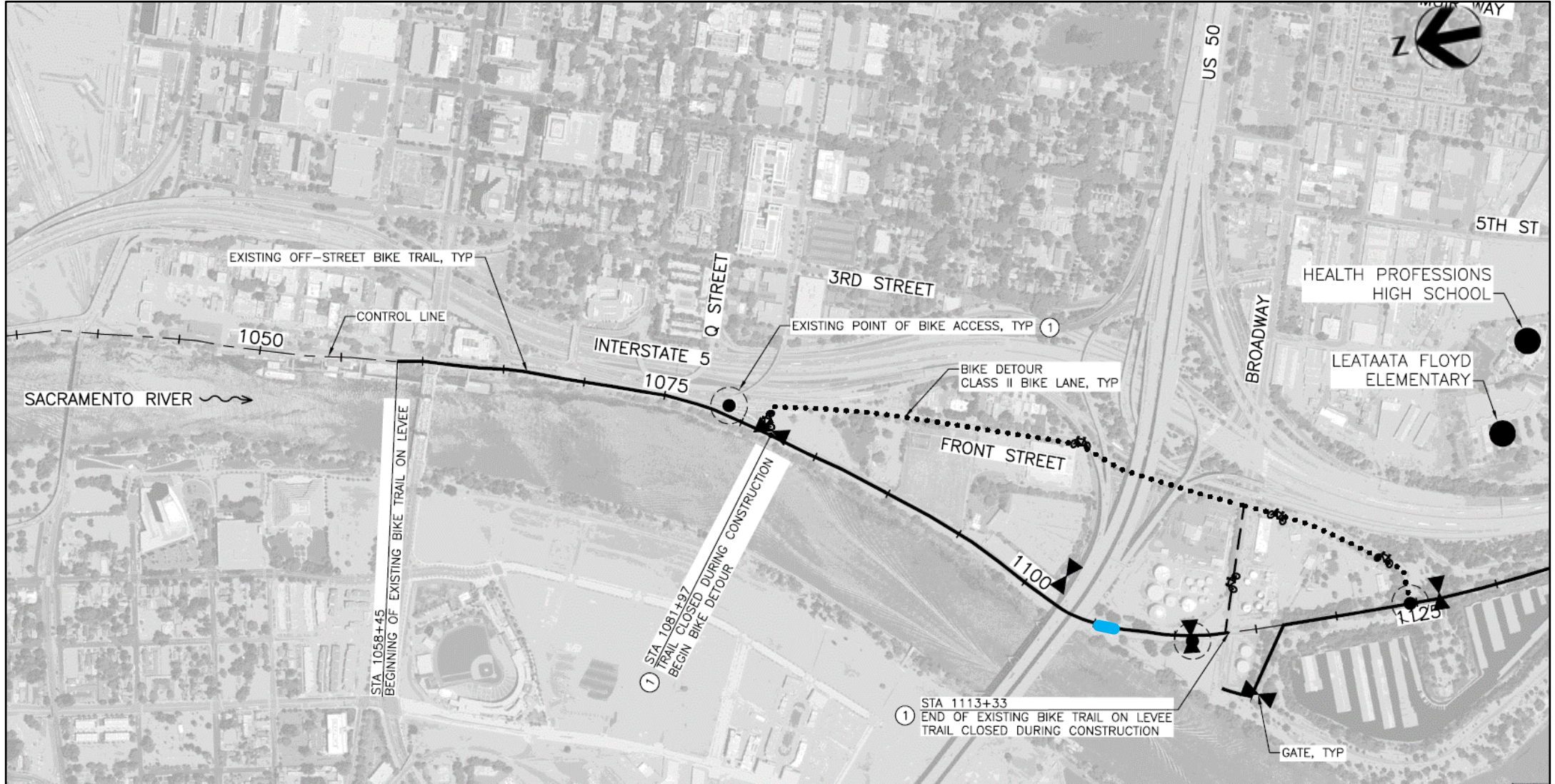


ALTERNATE BIKE ROUTE



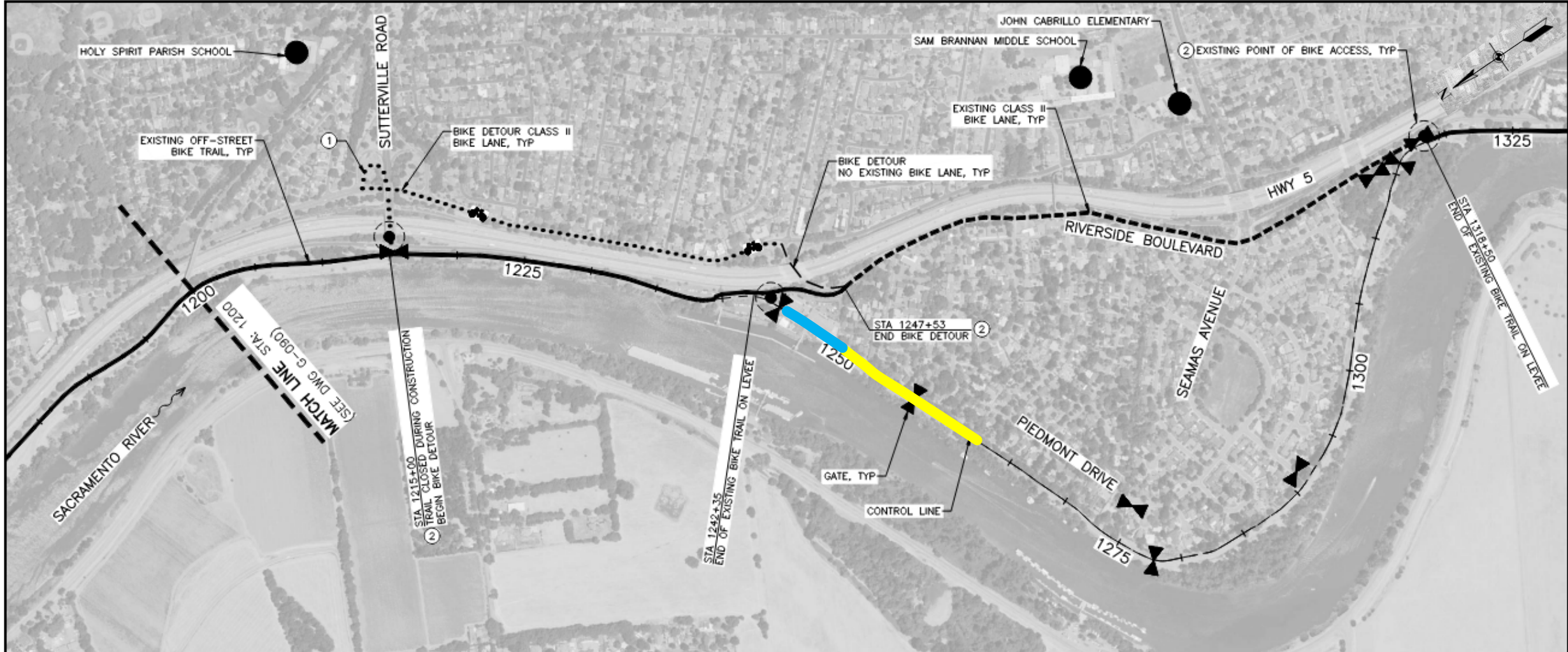


ALTERNATE BIKE ROUTE



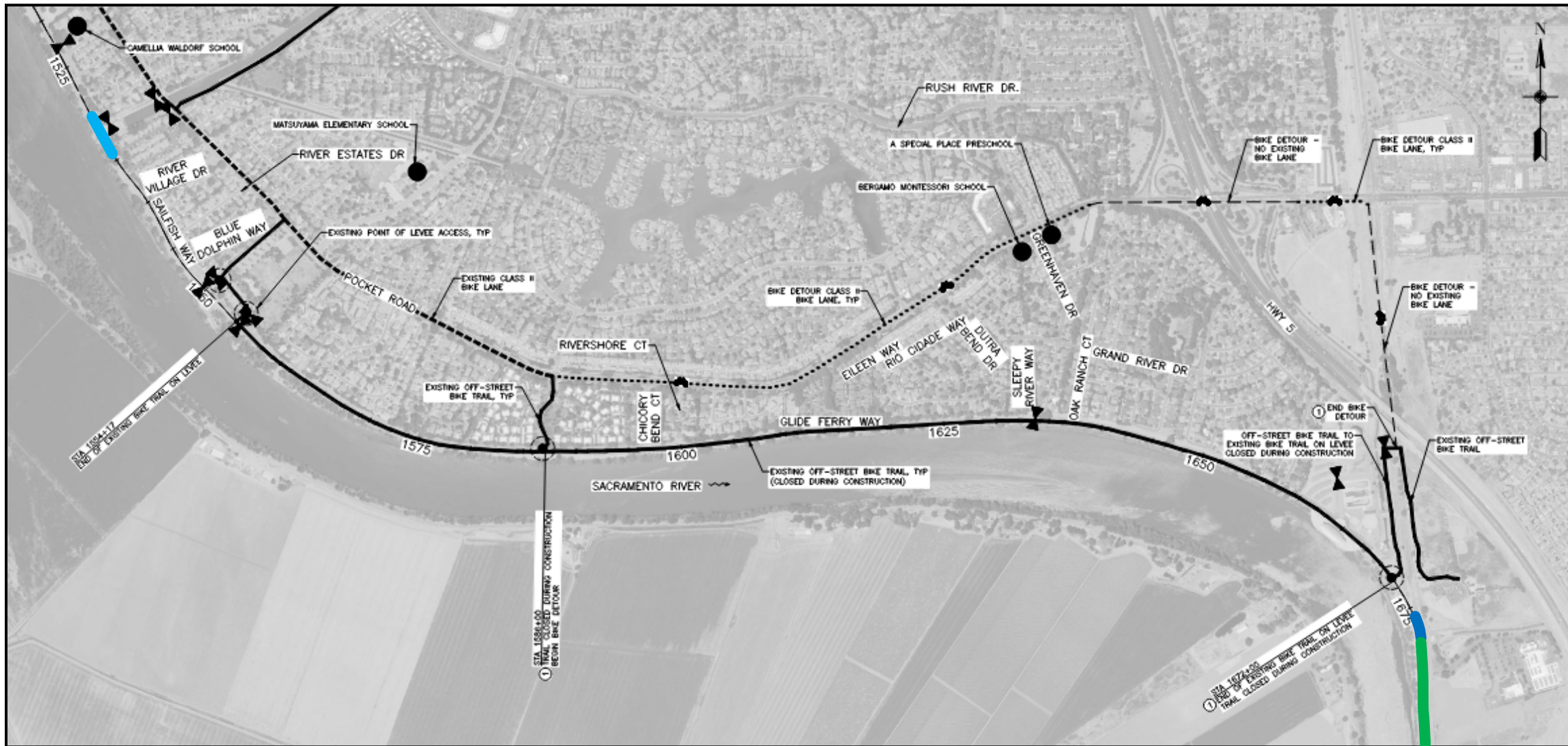


ALTERNATE BIKE ROUTE





ALTERNATE BIKE ROUTE





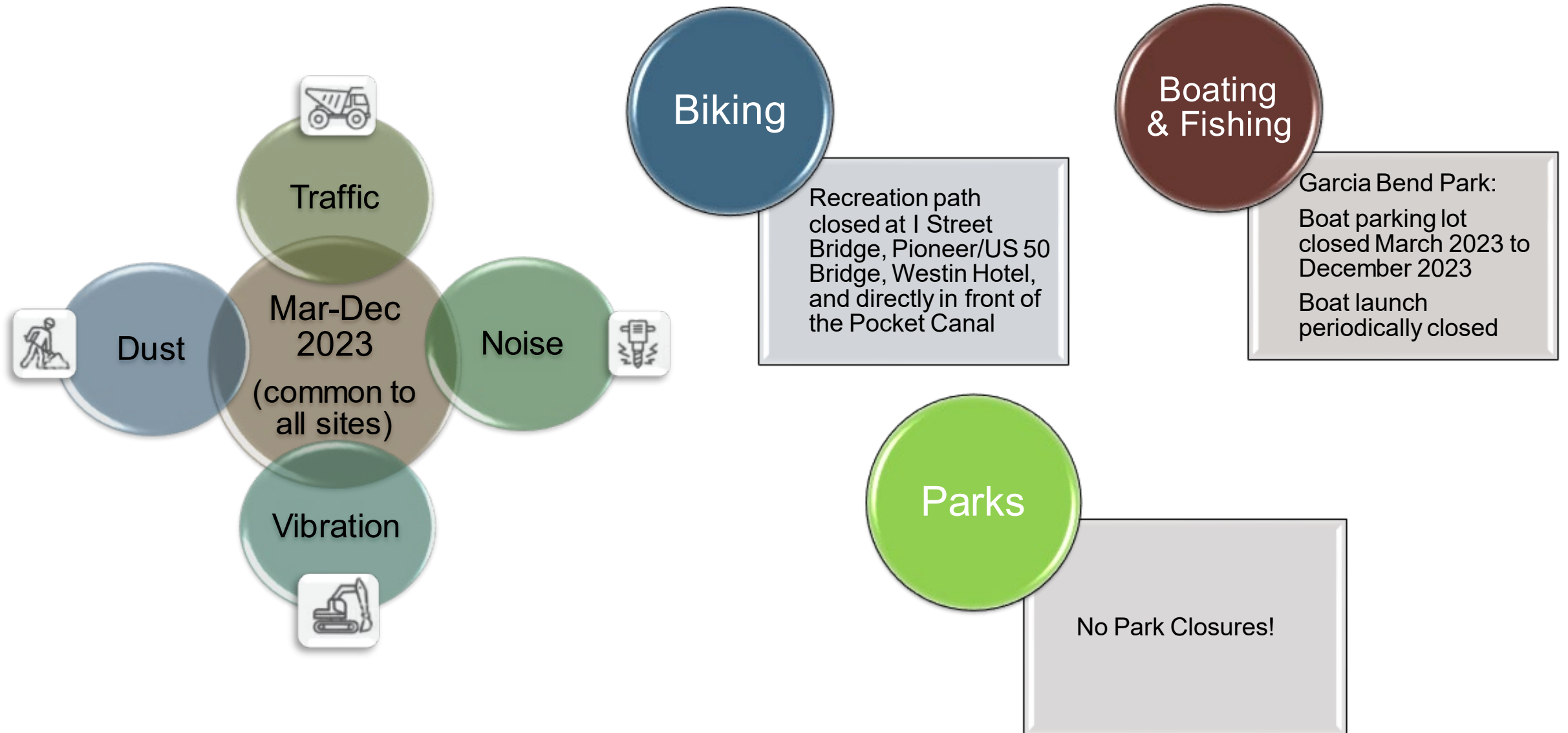
SUPPLEMENTAL EA/EIR

TOPIC AREAS ANALYZED



- Visual Resources
- Hydrology and Water Quality
- Vegetation and Wildlife
- Fisheries
- Special Status Species
- Cultural Resources
- Transportation and Circulation
- Geological Resources
- Air Quality
- Greenhouse Gas Emissions and Energy Consumption
- Noise
- Recreation
- Public Utilities and Service Systems
- Hazardous Materials
- Socioeconomic, Population, and Environmental Justice

IMPACTS



MITIGATION MEASURES



Detour Routes



Vibration Monitoring



Dust Control



Water & Air Quality Monitoring

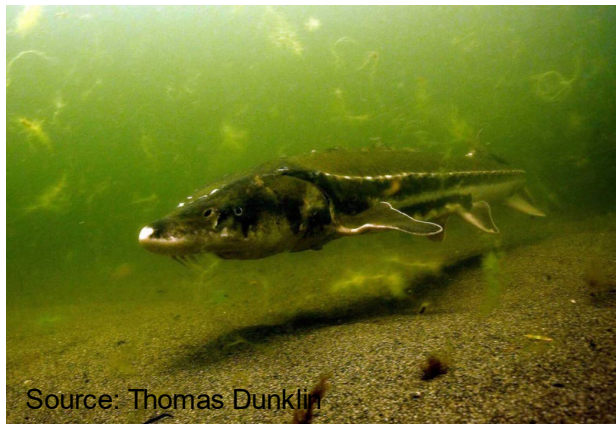
VEGETATION & WILDLIFE



Trimming and Removing Trees Outside of Bird Nesting Season and to Protect Bats



Creation of new habitat



No impact to fisheries



Comprehensive Monitoring by Qualified Biologists



HABITAT MITIGATION SITE



Beach Stone Lakes Mitigation Site (24.2 acres) - Diverse oak woodland habitat near Cliff's Marina



Photographs from March 2022



ANTICIPATED CONSTRUCTION SCHEDULE



Pre-construction (November 2022 (March 2023)

- Site prep, cut and trim trees

Construction Contract Award (January 2023)

- Submittals, site reconnaissance, preparation and mobilization

Site Construction (March 2023 - Fall/Winter 2023)

- Construct seepage/stability levee improvements



FOR MORE INFORMATION...



Home / Missions / Civil Works / Sacramento Levee Upgrades / Sac River Levees



Project Overview

American River Levees

Sacramento River Levees

Sacramento Weir

Mitigation

Subscribe for Construction & Traffic email updates

Project Information Tri-fold

Construction Work Inquiry & Concern Submission Form



2022 will see two miles of levee improvements in Big Pocket

The Sacramento Metropolitan area is one of the most at risk areas for flooding in the United States due to its location at the confluence and within the floodplain of two major rivers. The 1997 Sacramento flood events revealed deep under-seepage on the Sacramento River, including in areas that were remediated to address through-seepage with shallow cutoff walls in the early 1990s.

Construction is set to begin this spring on two miles of levee improvements in the Pocket neighborhood. The work will entail installation of a seepage cutoff wall from Surfside Way at the northern end of down to Sump 132 at the Pocket Canal on the southern end.

This is the third major construction contract to address seepage and stability concerns with the levee between Old Sacramento and the Freeport Regional Water Intake Facility near Sacramento's Pocket neighborhood. In 2020, construction crews installed nearly three miles of seepage cutoff wall along the Sacramento River East Levee, and a 400-foot-long seepage berm on the landside levee adjacent to Front St. In 2021, USACE contractors installed approximately 1.8 miles of seepage cutoff wall at four locations, including on both sides of Business 80/Highway 50 just upstream of Miller Park, on the south side of the little pocket, and on the north side of the big pocket. In total, the American River Common Features 2016 project is expected to construct approximately 9 miles of slurry cutoff walls along the Sacramento River East Levee, and will add erosion protection at a number of locations.

Current Project Activities

- Sacramento River Erosion Contract 1
- Sacramento River Erosion Contract 2
- Sacramento River East Levee Contract 2 Construction
- Sacramento River East Levee Contract 3 Construction

sacleveeupgrades.com



NEPA/CEQA COMMENTS



Draft Supplemental EA/EIR is available at:

sacleveeupgrades.com

Public Comment Period: June 15 – August 1, 2022

CEQA Certification: Expected October 2022

Final Document: Expected November 2022



HOW TO PROVIDE COMMENTS



1. Write:

Kalia Schuster
Department of Water Resources
3310 El Camino Ave, Annex Suite 200 OR
Sacramento, CA 95821

Public Affairs Office
U.S. Army Corps of Engineers
1325 J Street Room 1513
Sacramento, CA 95814

2. Email:

PublicCommentARCF16@water.ca.gov

ARCF_SRELC4@usace.army.mil

Please include “SREL Contract 4 SEA/SEIR” in subject line



CLARIFYING QUESTIONS



Please “raise hand” and limit question to 3 minutes
Computer: click on three dots
Phone: enter *9