

# AMERICAN RIVER WATERSHED COMMON FEATURES WATER RESOURCES DEVELOPMENT ACT OF 2016

## SACRAMENTO RIVER EAST LEVEE, MILE 55.2 LEFT BANK PROTECTION

### SUPPLEMENTAL ENVIRONMENTAL ASSESSMENT / SUPPLEMENTAL ENVIRONMENTAL IMPACT REPORT

PUBLIC MEETING

27 July 2020



U.S. Army Corps  
of Engineers  
Sacramento District





# HOW TO PROVIDE COMMENTS

## During the Meeting:

- Questions or comments may be typed into the WebEx “chat” function
- Time-permitting, we will address comments in Q&A after the presentation

**Comment Period is open until August 26<sup>th</sup>, 2020.**

Mail: U.S. Army Corps of Engineers,  
Sacramento District  
1325 J Street, Room 1513  
Sacramento, CA 95814

-OR-

Miles Claret  
Department of Water Resources  
3464 El Camino Avenue, Room 150  
Sacramento, CA 95821

Email: [spk-pao@usace.army.mil](mailto:spk-pao@usace.army.mil)

[PublicCommentARCF16@water.ca.gov](mailto:PublicCommentARCF16@water.ca.gov)

Use “Sacramento River 55.2L Project” in the subject line



# PUBLIC MEETING OUTLINE

- 1) Overarching Project and Environmental Analysis:  
American River Watershed Common Features 2016  
Environmental Impact Statement / Environmental Impact Report
- 2) Current Project and Environmental Analysis:  
Sacramento River Erosion Contract 1: River Mile 55.2 Left Bank  
(55.2L) Protection Project Supplemental EA / Supplemental EIR
  - Project Background
  - Project Design and Construction
  - Environmental Analysis
- 3) Opportunity for Questions & Comments



# **AMERICAN RIVER WATERSHED COMMON FEATURES 2016 (ARCF 16) ENVIRONMENTAL IMPACT STATEMENT / ENVIRONMENTAL IMPACT REPORT**

The Overarching Project and Environmental Analysis





# ARCF 16 PROJECT NEED

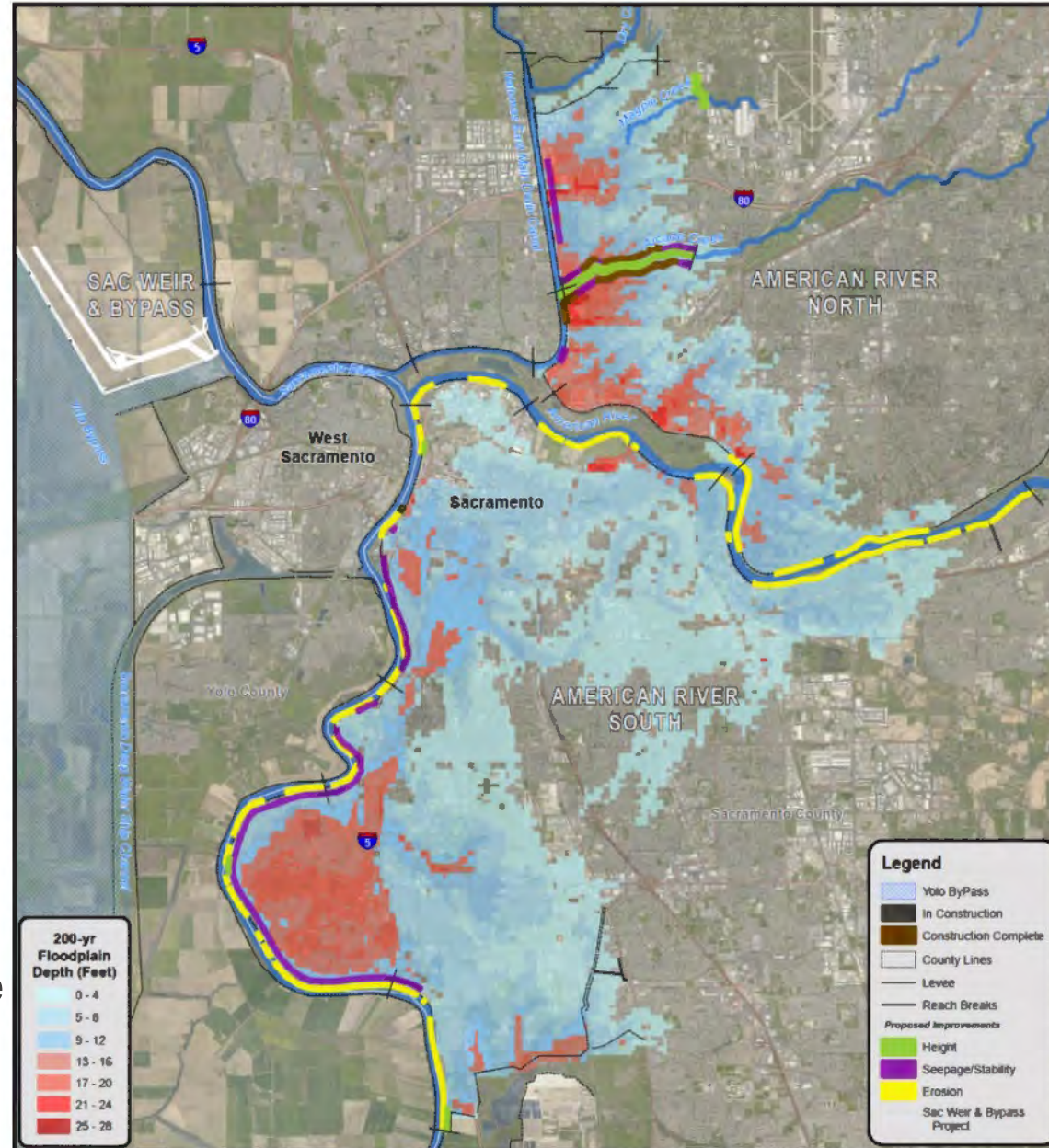


February 1986





# ARCF 16 PROJECT AREA AND FLOOD RISK



200-year flood risk map  
and proposed/active levee  
improvements under the  
ARCF 2016 Project







# ARCF 16 PROJECT PARTNERS

NEPA Lead Agency: USACE

CEQA Lead Agency: CVFPB

## Federal Government



**US Army Corps  
of Engineers®**

## State Government



Central Valley  
Flood Protection  
Board



Department of  
Water  
Resources

## Local Government



Sacramento Area Flood Control Agency



# AUTHORITIES

The ARCF 2016 Project (and the current Erosion project) are authorized under:

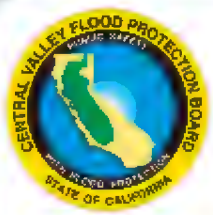
- Water Resources Development Act (WRDA) of 2016





# **SACRAMENTO RIVER EAST LEVEE, RIVER MILE 55.2 BANK PROTECTION PROJECT (55.2L)**

Current Project and Environmental Analysis



## 55.2L PROJECT LOCATION

Critical area:  
A 1,150 foot levee  
section  
along the  
Sacramento River  
at river mile 55.2  
on the east (left)  
bank.

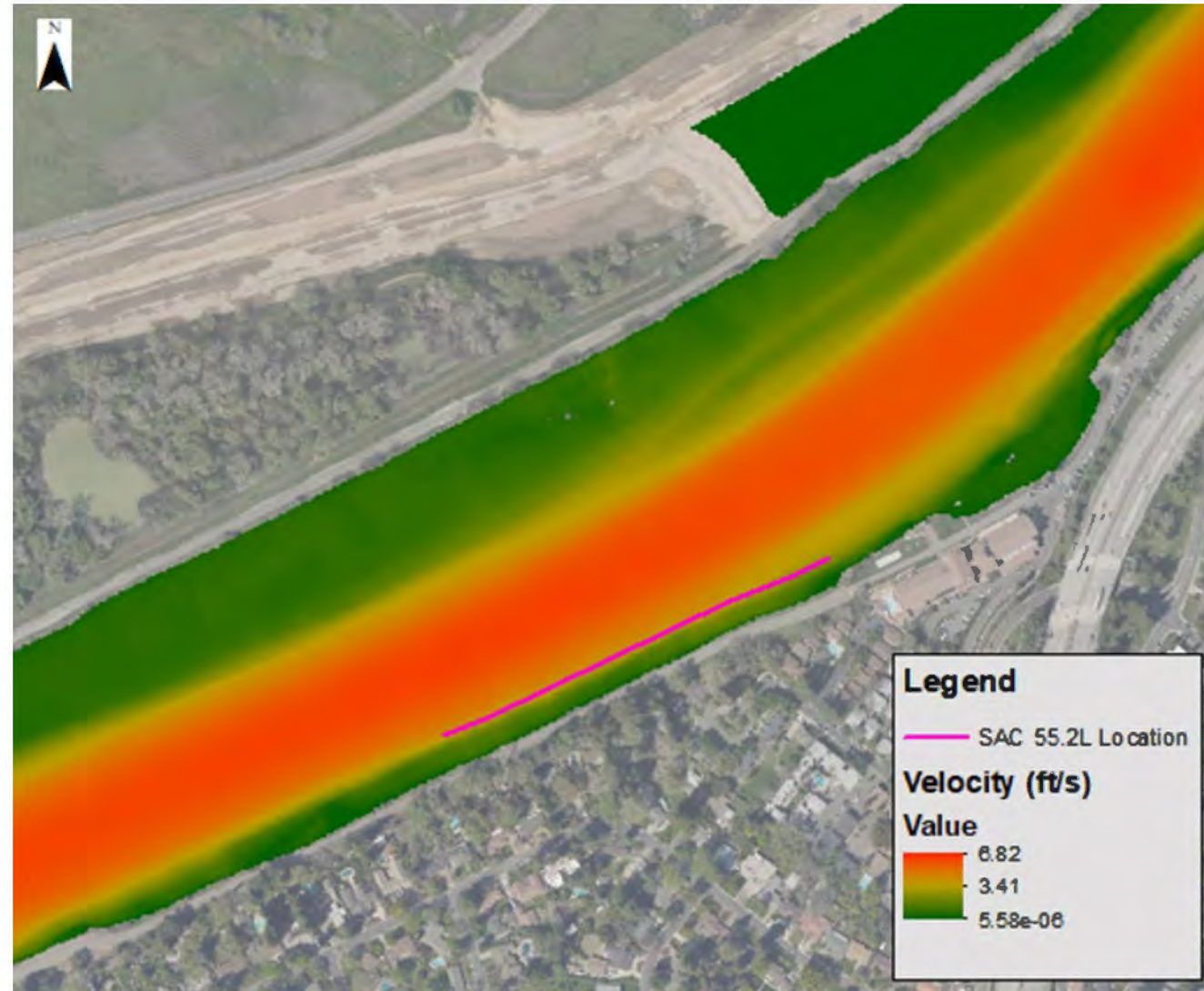




## 55.2L PROJECT NEED

Risks to Levee Section:  
Levees narrowly confine the river which leads to high velocities.

**High velocities and wind waves/boat wakes could lead to further erosion which could jeopardize the levee.**



Velocity map for the maximum flow at 115,000CFS (future without project).

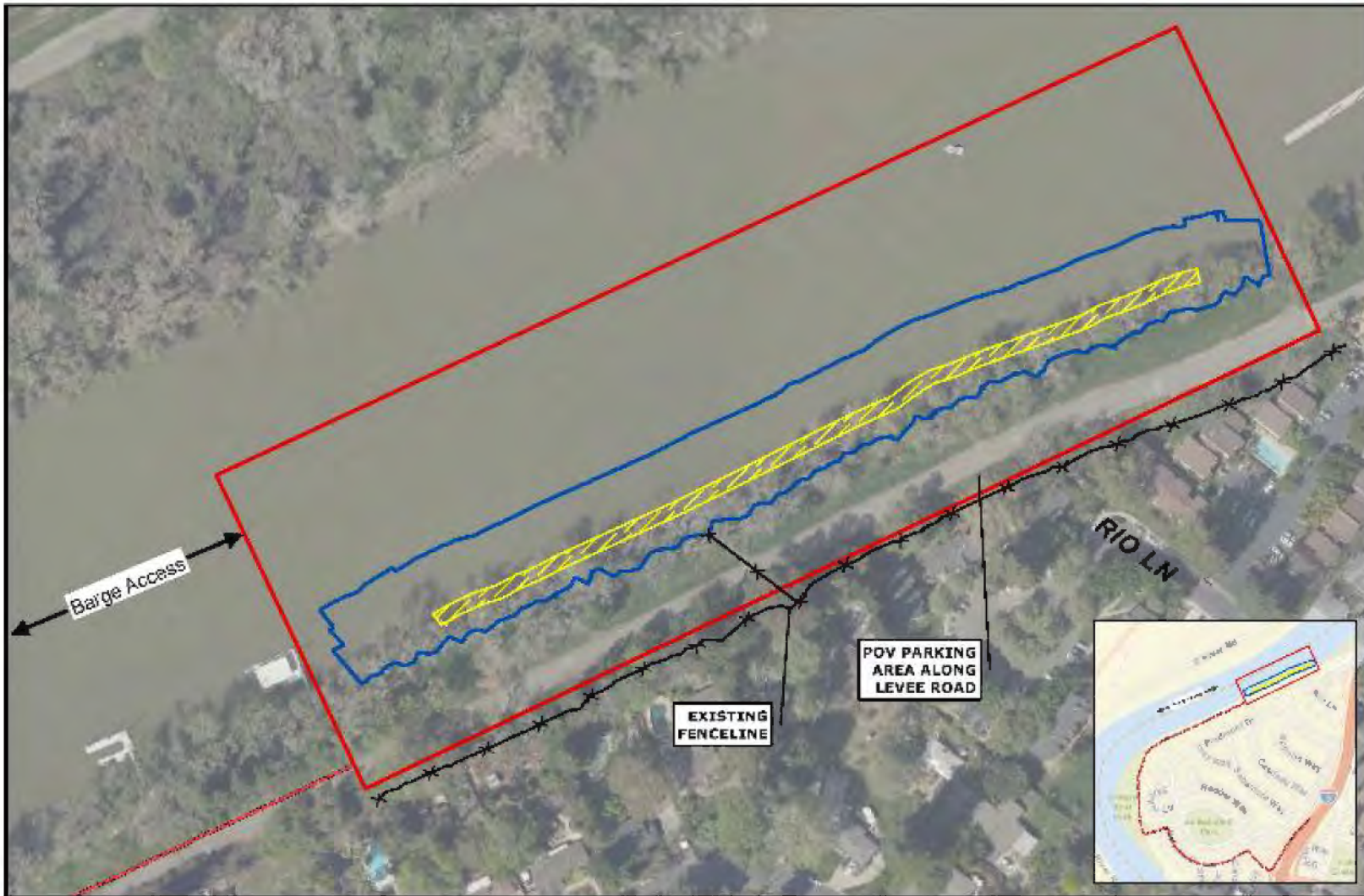




# 55.2L PROJECT DESIGN

Project design includes:

- Bank protection:
  - Rock placement on the river side of the levee
- Planting bench:
  - Creates habitat for fish and wildlife
- Instream woody material:
  - Creates habitat for fish



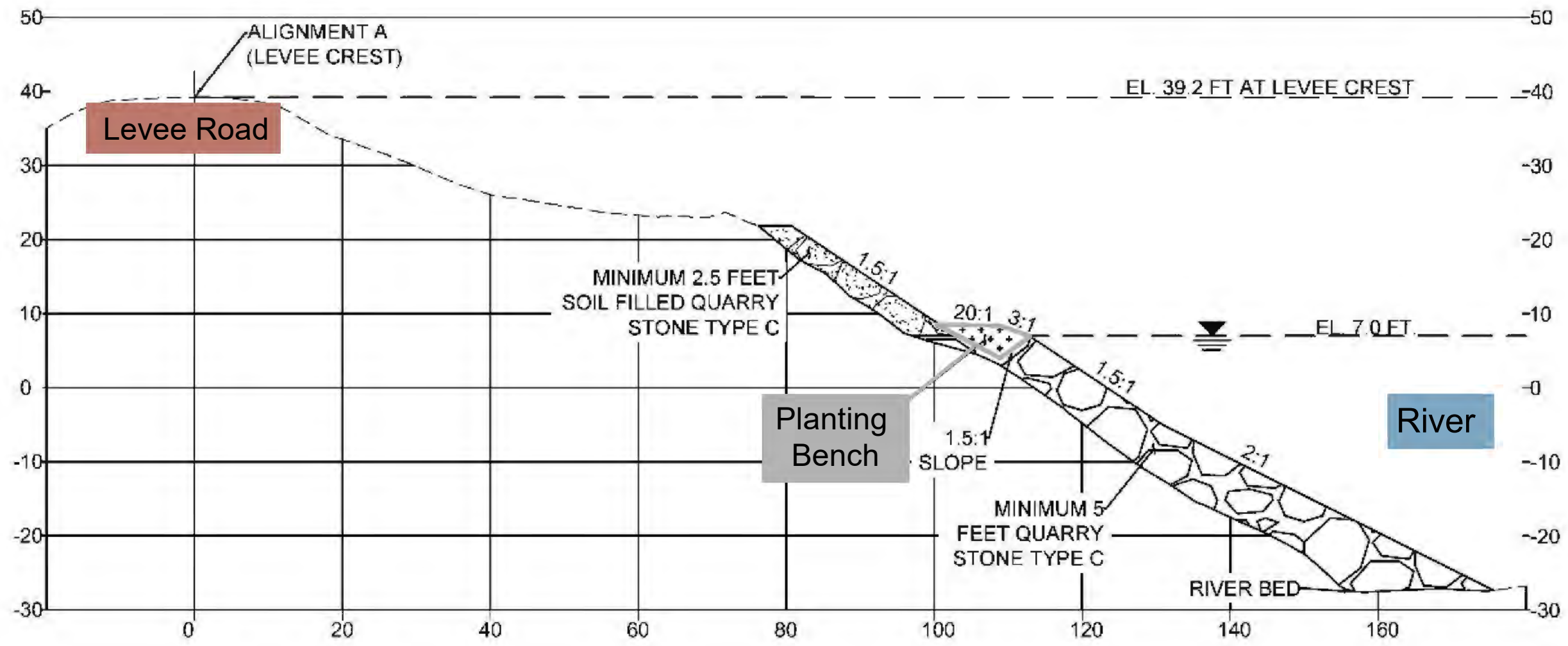
Construction Limit      Project Footprint  
Planting Bench      Access Route

**90% PROJECT FOOTPRINT**

SAC RM 55.2L



# 55.2L PROJECT DESIGN (CONT.)



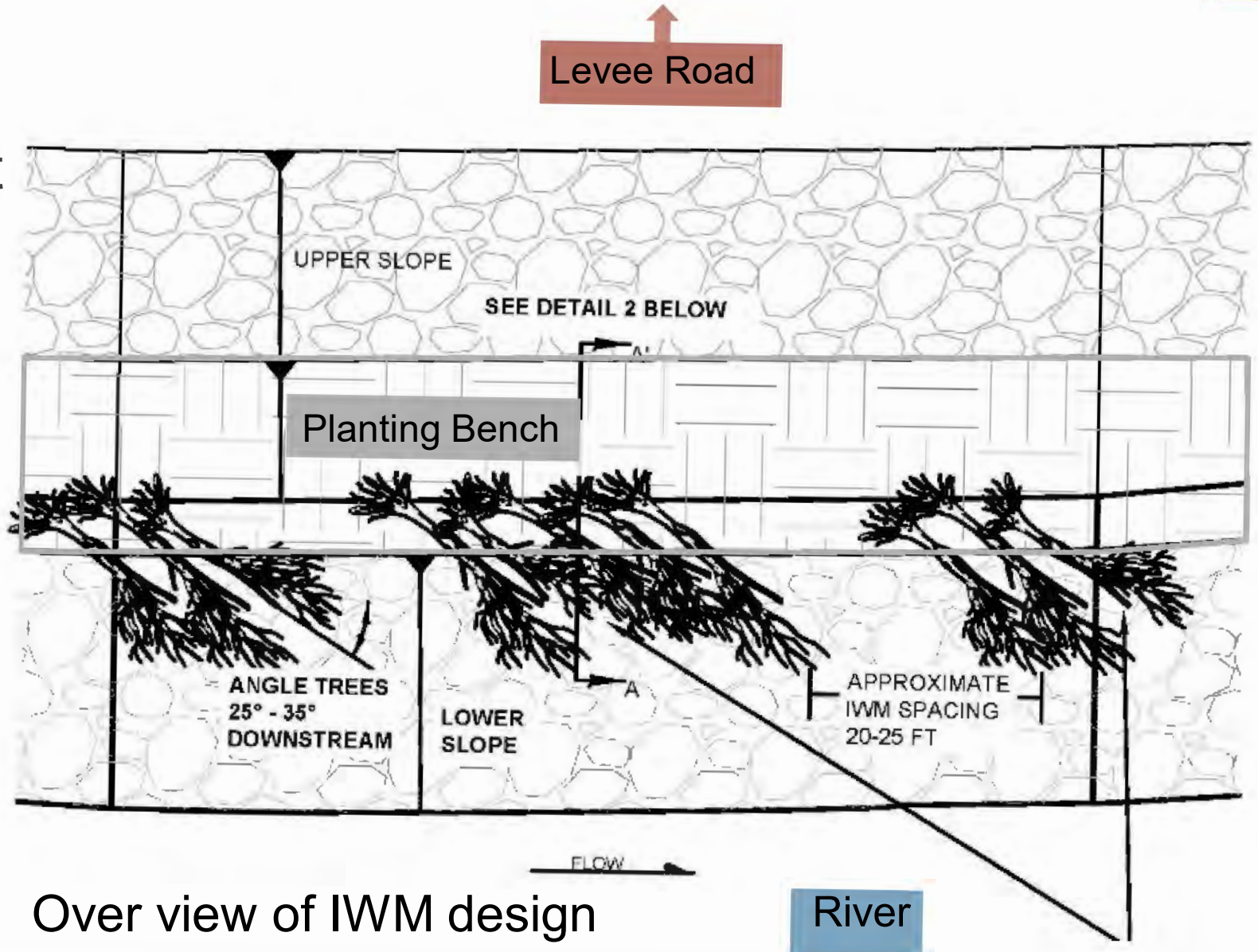
Typical cross section bank protection and planting bench



# IN-STREAM WOODY MATERIAL (IWM)

In-stream wood:

- Each tree 23 - 35 feet in length and 10 – 24 inch diameter (at 4.5 feet above the roots)
- Alternating groups of 3 and 5 trees
- Groups spaced 5 to 10 feet apart.



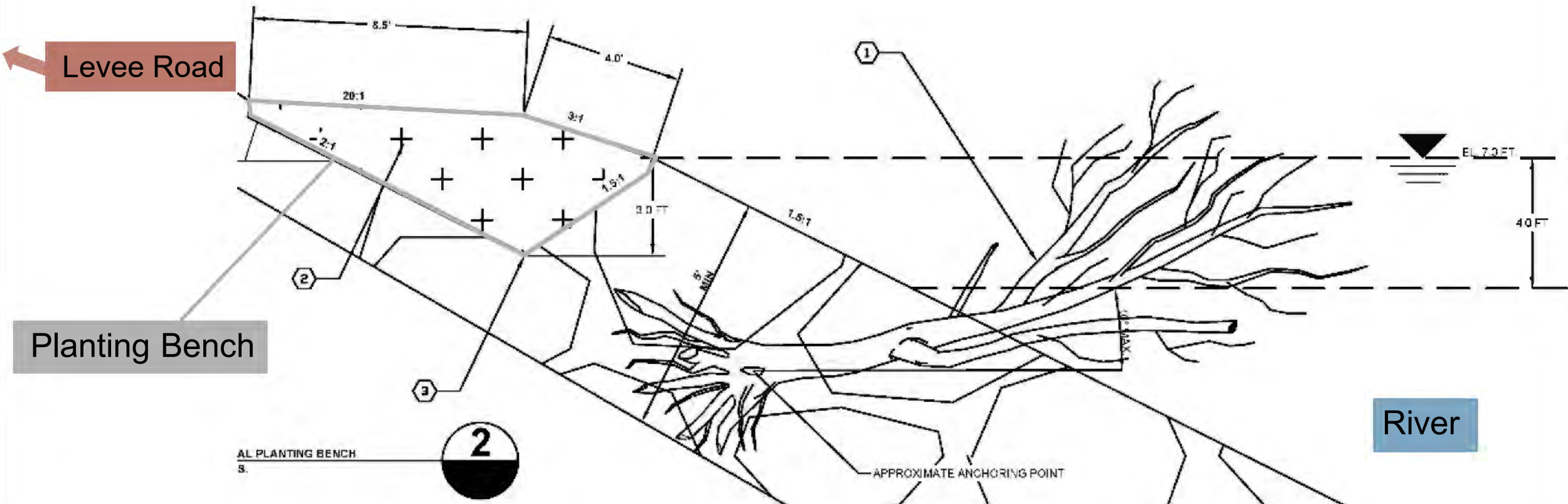
Over view of IWM design





# IN-STREAM WOODY MATERIAL (CONT)

In-stream wood is designed to have the majority of the tree under the average low flow water surface elevation (7 ft) of August, September, and October, with some sticking out of the water for boater safety.



Cross section of IWM design



# ACCESS ROUTES



Construction personnel access:

- Via existing streets and levee road
- Parking on levee road

Equipment and material delivery:

- Access from the river via barge.



 Construction Limit  
 Access Route

**90% ACCESS ROUTE**  
SAC RM 55.2L  
WRDA 2016







# CONSTRUCTION SCHEDULE AND NOTICES

Construction would follow the city's noise ordinances

- limit construction activities to 7 am to 7 pm Monday through Saturday and 9 am to 6 pm on Sundays.

Subscribe to construction and traffic email updates at [sacleveeupgrades.com](http://sacleveeupgrades.com)



Sac Bank Project,  
2006  
(Source: SAFCA)

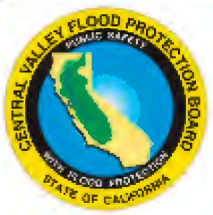


# SUPPLEMENTAL EA/EIR

- The 2016 ARCF EIS/EIR analyzed the basic erosion protection measures.
- This SEA/EIR analyzes the effects on resource areas due to construction elements. The construction elements have been identified through project design and refinement.

## Resource Areas Analyzed

- Visual Resources
- Water Quality
- Vegetation and Wildlife
- Fisheries
- Special Status Species
- Air Quality
- Climate Change
- Noise
- Recreation
- Cultural Resources
- Hazardous Wastes and Materials



# MITIGATION MEASURES

The planting bench will mitigate for impacts to vegetation, wildlife, and fish species. It will provide habitat for:

- Western Yellow-billed Cuckoo migration
- nesting Swainson's Hawks
- listed fishes by creating shade

Additional mitigation is to be implemented at a future date in coordination with USFWS and NMFS according to Section 7 consultation.



Nesting Bird Surveys



Turbidity Curtains



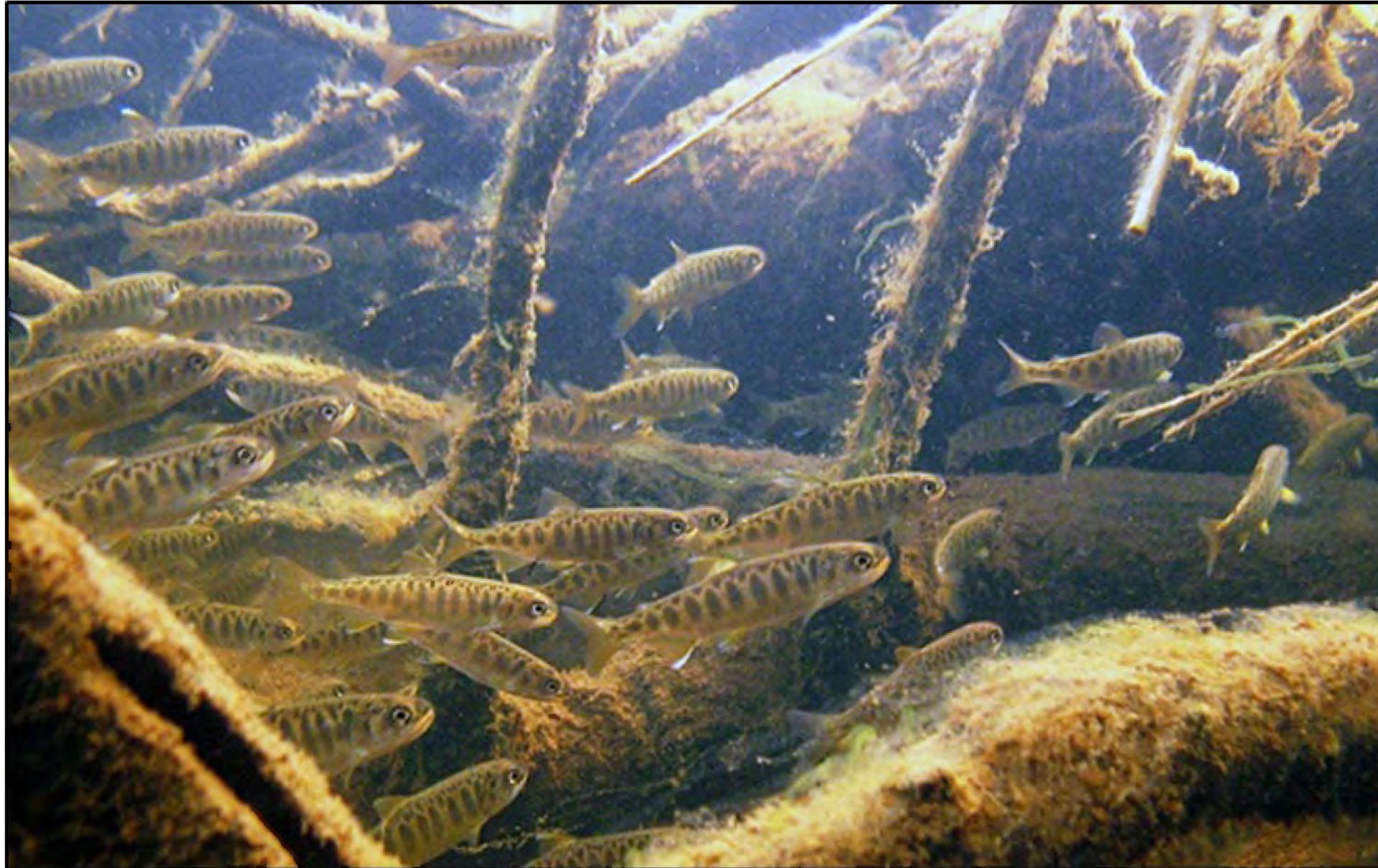
Instream Woody Material

Photo 3: Imported orchard trees selected for use as IWM. Note complex canopy structure and retention of small to medium-sized branches.





# IWM: HABITAT FOR JUVENILE SALMON, STEELHEAD, AND GREEN STURGEON





# ENVIRONMENTAL COMMITMENTS AND CONSISTENCY DETERMINATIONS

Environmental commitments from the following documents would be followed:

- 2016 ARCF EIS/EIR
- Biological Opinions (NMFS, USFWS)
- Section 401, Water Quality Certification (Central Valley Regional Water Quality Control Board)

CVFPB would demonstrate consistency with the Delta Plan and the Delta Reform Act through the Covered Actions process in coordination with the Delta Stewardship Council.



## NEPA/CEQA NEXT STEPS

The Draft Supplemental EA/EIR is available at:  
[sacleveeupgrades.com](https://sacleveeupgrades.com)

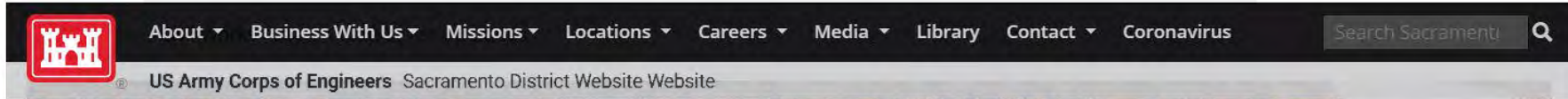
Public comment period: July 11<sup>th</sup> through August 26<sup>th</sup> 2020

Final document anticipated to be adopted/certified:  
late 2020 or early 2021





# MORE INFORMATION



## Project Overview

### American River Levees

### Sacramento River Levees

### Sacramento Weir

Subscribe for Construction  
& Traffic email updates



Project Information Tri-fold



## Reducing flood risk in Sacramento

Greater Sacramento, California, is often considered to be the most at-risk region in America for catastrophic flooding, relying on an aging system of levees, weirs and bypasses and Folsom Dam to reduce its flood risk. But that system, just like a chain, is only as strong as its weakest link. Together, the U.S. Army Corps of Engineers, California's Central Valley Flood Protection Board, California Department of Water Resources, and the Sacramento Area Flood Control Agency have made tremendous progress in reducing the flood risk, but more work remains. Through the Bipartisan Budget Act, the Corps has received full upfront funding to modernize Sacramento's aging flood infrastructure. This allows us to more efficiently implement nearly \$1.8 billion in upgrades to Sacramento's flood risk management system. The authorized work includes up to: 13 miles of seepage cutoff walls, 21 miles of bank protection, 5 miles of levee stabilization, 5 miles of levee raises and widening the Sacramento Weir and bypass.

## Current Project Activities

Sacramento River East Levee Contract 1 Construction

[sacleveeupgrades.com](http://sacleveeupgrades.com)



# HOW TO PROVIDE COMMENTS

## During the Meeting:

- Questions or comments may be typed into the WebEx “chat” function
- Time-permitting, we will address comments in Q&A after the presentation

**Comment Period is open until August 26<sup>th</sup>, 2020.**

Mail: U.S. Army Corps of Engineers,  
Sacramento District  
1325 J Street, Room 1513  
Sacramento, CA 95814

-OR-

Miles Claret  
Department of Water Resources  
3464 El Camino Avenue, Room 150  
Sacramento, CA 95821

Email: [spk-pao@usace.army.mil](mailto:spk-pao@usace.army.mil)

[PublicCommentARCF16@water.ca.gov](mailto:PublicCommentARCF16@water.ca.gov)

Use “Sacramento River 55.2L Project” in the subject line



**THANK YOU!**

