

APPENDIX A. AIR QUALITY MODELING RESULTS


Road Construction Emissions Model Data Entry Worksheet

Note: Required data input sections have a yellow background.
Optional data input sections have a blue background. Only areas with a yellow or blue background can be modified. Program defaults have a white background.
The user is required to enter information in cells D10 through D24, E28 through G35, and D38 through D41 for all project types.
Please use "Clear Data Input & User Overrides" button first before changing the Project Type or begin a new project.

Input Type

Project Name
Construction Start Year
Project Type
Project Construction Time
Working Days per Month
Predominant Soil/Site Type: Enter 1, 2, or 3
(for project within "Sacramento County", follow soil type selection instructions in cells E18 to E20 otherwise see instructions provided in cells J18 to J22)
Project Length
Total Project Area
Maximum Area Disturbed/Day
Water Trucks Used?

Version 8.1.0



To begin a new project, click this button to clear data previously entered. This button will only work if you opted not to disable macros when loading this spreadsheet.

Sac River S/S Contract 3: 2022 Vegetation and Cutoff Wall

2022 Enter a Year between 2014 and 2025 (inclusive)

4

- 1) New Road Construction : Project to build a roadway from bare ground, which generally requires more site preparation than widening an existing roadway
- 2) Road Widening : Project to add a new lane to an existing roadway
- 3) Bridge/Overpass Construction : Project to build an elevated roadway, which generally requires some different equipment than a new roadway, such as a crane
- 4) Other Linear Project Type: Non-roadway project such as a pipeline, transmission line, or levee construction

7.00 months
22.00 days (assume 22 if unknown)

2

- 1) Sand Gravel : Use for quaternary deposits (Delta/West County)
- 2) Weathered Rock-Earth : Use for Laguna formation (Jackson Highway area) or the lone formation (Scott Road, Rancho Murieta)
- 3) Blasted Rock : Use for Salt Springs Slate or Copper Hill Volcanics (Folsom South of Highway 50, Rancho Murieta)

2.30 miles
28.00 acres
5.00 acres

1 Yes
2 No

Please note that the soil type instructions provided in cells E18 to E20 are specific to Sacramento County. Maps available from the California Geologic Survey (see weblink below) can be used to determine soil type outside Sacramento County.

http://www.conservation.ca.gov/cgs/information/geologic_mapping/Pages/googlemaps.aspx#regionalseries

Material Hauling Quantity Input

Material Type	Phase	Haul Truck Capacity (yd ³) (assume 20 if unknown)	Import Volume (yd/day)	Export Volume (yd/day)
Soil	Grubbing/Land Clearing	15.00	0.00	35.00
	Grading/Excavation	15.00	1922.00	36.00
	Drainage/Utilities/Sub-Grade			
	Paving			
Asphalt	Grubbing/Land Clearing			
	Grading/Excavation			
	Drainage/Utilities/Sub-Grade			
	Paving			

Mitigation Options

On-road Fleet Emissions Mitigation

Off-road Equipment Emissions Mitigation

No Mitigation

Select "2010 and Newer On-road Vehicles Fleet" option when the on-road heavy-duty truck fleet for the project will be limited to vehicles of model year 2010 or newer

Select "20% NOx and 45% Exhaust PM reduction" option if the project will be required to use a lower emitting off-road construction fleet. The SMAQMD Construction Mitigation Calculator can be used to confirm compliance with this mitigation measure (<http://www.airquality.org/ceqa/mitigation.shtml>).

Select "Tier 4 Equipment" option if some or all off-road equipment used for the project meets CARB Tier 4 Standard

The remaining sections of this sheet contain areas that require modification when 'Other Project Type' is selected.

Note: The program's estimates of construction period phase length can be overridden in cells D50 through D53, and F50 through F53.

Construction Periods	User Override of Construction Months	Program Calculated Months	User Override of Phase Starting Date	Program Default Phase Starting Date
Grubbing/Land Clearing	1.20	0.70	4/1/2022	1/1/2022
Grading/Excavation	5.50	3.15	5/8/2022	2/7/2022
Drainage/Utilities/Sub-Grade	0.00	2.10		7/28/2022
Paving	0.00	1.05		7/28/2022
Totals (Months)		7		

Note: You have entered a non-default starting date. Please provide starting date for all phases, or default values for other phases will be used.

Please note: You have entered a different number of months than the project length shown in cell D16.

Note: Soil Hauling emission default values can be overridden in cells D61 through D64, and F61 through F64.

Soil Hauling Emissions	User Override of Miles/Round Trip	Program Estimate of Miles/Round Trip	User Override of Truck Round Trips/Day	Default Values Round Trips/Day	Calculated Daily VMT					
User Input										
Miles/round trip: Grubbing/Land Clearing	26.00			3	78.00					
Miles/round trip: Grading/Excavation	41.00			131	5371.00					
Miles/round trip: Drainage/Utilities/Sub-Grade				0	0.00					
Miles/round trip: Paving				0	0.00					
Emission Rates	ROG	CO	NOx	PM10	PM2.5	SOx	CO2	CH4	N2O	CO2e
Grubbing/Land Clearing (grams/mile)	0.10	0.43	3.23	0.11	0.05	0.02	1,596.61	0.00	0.05	1,612.86
Grading/Excavation (grams/mile)	0.10	0.43	3.23	0.11	0.05	0.02	1,596.61	0.00	0.05	1,612.86
Draining/Utilities/Sub-Grade (grams/mile)	0.00	0.00	0.00	0.00	0.00	0.00	0.00	0.00	0.00	0.00
Paving (grams/mile)	0.00	0.00	0.00	0.00	0.00	0.00	0.00	0.00	0.00	0.00
Hauling Emissions	ROG	CO	NOx	PM10	PM2.5	SOx	CO2	CH4	N2O	CO2e
Pounds per day - Grubbing/Land Clearing	0.02	0.07	0.56	0.02	0.01	0.00	274.55	0.00	0.01	277.35
Tons per const. Period - Grubbing/Land Clearing	0.00	0.00	0.01	0.00	0.00	0.00	3.62	0.00	0.00	3.66
Pounds per day - Grading/Excavation	1.16	5.08	38.27	1.33	0.59	0.18	18,905.54	0.05	0.64	19,097.92
Tons per const. Period - Grading/Excavation	0.07	0.31	2.36	0.08	0.04	0.01	1,164.58	0.00	0.04	1,176.43
Pounds per day - Drainage/Utilities/Sub-Grade	0.00	0.00	0.00	0.00	0.00	0.00	0.00	0.00	0.00	0.00
Tons per const. Period - Drainage/Utilities/Sub-Grade	0.00	0.00	0.00	0.00	0.00	0.00	0.00	0.00	0.00	0.00
Pounds per day - Paving	0.00	0.00	0.00	0.00	0.00	0.00	0.00	0.00	0.00	0.00
Tons per const. Period - Paving	0.00	0.00	0.00	0.00	0.00	0.00	0.00	0.00	0.00	0.00
Total tons per construction project	0.07	0.31	2.37	0.08	0.04	0.01	1,168.21	0.00	0.04	1,180.09

Note: Asphalt Hauling emission default values can be overridden in cells D87 through D90, and F87 through F90.

Asphalt Hauling Emissions	User Override of Miles/Round Trip	Program Estimate of Miles/Round Trip	User Override of Truck Round Trips/Day	Default Values Round Trips/Day	Calculated Daily VMT					
User Input										
Miles/round trip: Grubbing/Land Clearing				0	0.00					
Miles/round trip: Grading/Excavation				0	0.00					
Miles/round trip: Drainage/Utilities/Sub-Grade				0	0.00					
Miles/round trip: Paving				0	0.00					
Emission Rates	ROG	CO	NOx	PM10	PM2.5	SOx	CO2	CH4	N2O	CO2e
Grubbing/Land Clearing (grams/mile)	0.10	0.43	3.23	0.11	0.05	0.02	1,596.61	0.00	0.05	1,612.86
Grading/Excavation (grams/mile)	0.10	0.43	3.23	0.11	0.05	0.02	1,596.61	0.00	0.05	1,612.86
Draining/Utilities/Sub-Grade (grams/mile)	0.00	0.00	0.00	0.00	0.00	0.00	0.00	0.00	0.00	0.00
Paving (grams/mile)	0.00	0.00	0.00	0.00	0.00	0.00	0.00	0.00	0.00	0.00
Emissions	ROG	CO	NOx	PM10	PM2.5	SOx	CO2	CH4	N2O	CO2e
Pounds per day - Grubbing/Land Clearing	0.00	0.00	0.00	0.00	0.00	0.00	0.00	0.00	0.00	0.00
Tons per const. Period - Grubbing/Land Clearing	0.00	0.00	0.00	0.00	0.00	0.00	0.00	0.00	0.00	0.00
Pounds per day - Grading/Excavation	0.00	0.00	0.00	0.00	0.00	0.00	0.00	0.00	0.00	0.00
Tons per const. Period - Grading/Excavation	0.00	0.00	0.00	0.00	0.00	0.00	0.00	0.00	0.00	0.00
Pounds per day - Drainage/Utilities/Sub-Grade	0.00	0.00	0.00	0.00	0.00	0.00	0.00	0.00	0.00	0.00
Tons per const. Period - Drainage/Utilities/Sub-Grade	0.00	0.00	0.00	0.00	0.00	0.00	0.00	0.00	0.00	0.00
Pounds per day - Paving	0.00	0.00	0.00	0.00	0.00	0.00	0.00	0.00	0.00	0.00
Tons per const. Period - Paving	0.00	0.00	0.00	0.00	0.00	0.00	0.00	0.00	0.00	0.00
Total tons per construction project	0.00	0.00	0.00	0.00	0.00	0.00	0.00	0.00	0.00	0.00

Note: Worker commute default values can be overridden in cells D113 through D118.

Worker Commute Emissions		User Override of Worker Commute Default Values		Default Values							
User Input				Calculated Daily Trips	Calculated Daily VMT						
Miles/one-way trip	20										
One-way trips/day	2										
No. of employees: Grubbing/Land Clearing	14			28	560.00						
No. of employees: Grading/Excavation	100			200	4,000.00						
No. of employees: Drainage/Utilities/Sub-Grade				0	0.00						
No. of employees: Paving				0	0.00						
Emission Rates	ROG	CO	NOx	PM10	PM2.5	SOx	CO2	CH4	N2O	CO2e	
Grubbing/Land Clearing (grams/mile)	0.02	0.92	0.09	0.05	0.02	0.00	348.29	0.01	0.00	349.59	
Grading/Excavation (grams/mile)	0.02	0.92	0.09	0.05	0.02	0.00	348.29	0.01	0.00	349.59	
Draining/Utilities/Sub-Grade (grams/mile)	0.00	0.00	0.00	0.00	0.00	0.00	0.00	0.00	0.00	0.00	
Paving (grams/mile)	0.00	0.00	0.00	0.00	0.00	0.00	0.00	0.00	0.00	0.00	
Grubbing/Land Clearing (grams/trip)	0.87	2.06	0.16	0.00	0.00	0.00	79.59	0.01	0.01	81.77	
Grading/Excavation (grams/trip)	0.87	2.06	0.16	0.00	0.00	0.00	79.59	0.01	0.01	81.77	
Draining/Utilities/Sub-Grade (grams/trip)	0.00	0.00	0.00	0.00	0.00	0.00	0.00	0.00	0.00	0.00	
Paving (grams/trip)	0.00	0.00	0.00	0.00	0.00	0.00	0.00	0.00	0.00	0.00	
Emissions	ROG	CO	NOx	PM10	PM2.5	SOx	CO2	CH4	N2O	CO2e	
Pounds per day - Grubbing/Land Clearing	0.07	1.26	0.12	0.06	0.02	0.00	434.90	0.01	0.01	436.65	
Tons per const. Period - Grubbing/Land Clearing	0.00	0.02	0.00	0.00	0.00	0.00	5.74	0.00	0.00	5.76	
Pounds per day - Grading/Excavation	0.53	9.00	0.88	0.41	0.17	0.03	3,106.46	0.07	0.04	3,118.95	
Tons per const. Period - Grading/Excavation	0.03	0.55	0.05	0.03	0.01	0.00	191.36	0.00	0.00	192.13	
Pounds per day - Drainage/Utilities/Sub-Grade	0.00	0.00	0.00	0.00	0.00	0.00	0.00	0.00	0.00	0.00	
Tons per const. Period - Drainage/Utilities/Sub-Grade	0.00	0.00	0.00	0.00	0.00	0.00	0.00	0.00	0.00	0.00	
Pounds per day - Paving	0.00	0.00	0.00	0.00	0.00	0.00	0.00	0.00	0.00	0.00	
Tons per const. Period - Paving	0.00	0.00	0.00	0.00	0.00	0.00	0.00	0.00	0.00	0.00	
Total tons per construction project	0.03	0.57	0.06	0.03	0.01	0.00	197.10	0.00	0.00	197.89	

Note: Water Truck default values can be overridden in cells D145 through D148, and F145 through F148.

Water Truck Emissions		User Override of Program Estimate of		User Override of Truck		Default Values		Calculated			
User Input	Default # Water Trucks	Number of Water Trucks	Miles Traveled/Vehicle/Day	Miles Traveled/Vehicle/Day	Miles Traveled/Vehicle/Day	Daily VMT					
Grubbing/Land Clearing - Exhaust	1		40.00			40.00					
Grading/Excavation - Exhaust	2		40.00			80.00					
Drainage/Utilities/Subgrade						0.00					
Paving						0.00					
Emission Rates	ROG	CO	NOx	PM10	PM2.5	SOx	CO2	CH4	N2O	CO2e	
Grubbing/Land Clearing (grams/mile)	0.10	0.43	3.23	0.11	0.05	0.02	1,596.61	0.00	0.05	1,612.86	
Grading/Excavation (grams/mile)	0.10	0.43	3.23	0.11	0.05	0.02	1,596.61	0.00	0.05	1,612.86	
Draining/Utilities/Sub-Grade (grams/mile)	0.00	0.00	0.00	0.00	0.00	0.00	0.00	0.00	0.00	0.00	
Paving (grams/mile)	0.00	0.00	0.00	0.00	0.00	0.00	0.00	0.00	0.00	0.00	
Emissions	ROG	CO	NOx	PM10	PM2.5	SOx	CO2	CH4	N2O	CO2e	
Pounds per day - Grubbing/Land Clearing	0.01	0.04	0.29	0.01	0.00	0.00	140.80	0.00	0.00	142.23	
Tons per const. Period - Grubbing/Land Clearing	0.00	0.00	0.00	0.00	0.00	0.00	1.86	0.00	0.00	1.88	
Pounds per day - Grading/Excavation	0.02	0.08	0.57	0.02	0.01	0.00	281.59	0.00	0.01	284.46	
Tons per const. Period - Grading/Excavation	0.00	0.00	0.04	0.00	0.00	0.00	17.35	0.00	0.00	17.52	
Pounds per day - Drainage/Utilities/Sub-Grade	0.00	0.00	0.00	0.00	0.00	0.00	0.00	0.00	0.00	0.00	
Tons per const. Period - Drainage/Utilities/Sub-Grade	0.00	0.00	0.00	0.00	0.00	0.00	0.00	0.00	0.00	0.00	
Pounds per day - Paving	0.00	0.00	0.00	0.00	0.00	0.00	0.00	0.00	0.00	0.00	
Tons per const. Period - Paving	0.00	0.00	0.00	0.00	0.00	0.00	0.00	0.00	0.00	0.00	
Total tons per construction project	0.00	0.01	0.04	0.00	0.00	0.00	19.20	0.00	0.00	19.40	

Note: Fugitive dust default values can be overridden in cells D171 through D173.

Fugitive Dust	User Override of Max		Default	PM10	PM10	PM2.5	PM2.5
	Acreage Disturbed/Day	Maximum Acreage/Day					
Fugitive Dust - Grubbing/Land Clearing		5.00		50.00	0.66	10.40	0.14
Fugitive Dust - Grading/Excavation		5.00		50.00	3.08	10.40	0.64
Fugitive Dust - Drainage/Utilities/Subgrade		0.00		0.00	0.00	0.00	0.00

Values in cells D183 through D216, D234 through D267, D285 through D318, and D336 through D369 are required when 'Other Project Type' is selected.

Off-Road Equipment Emissions														
Grubbing/Land Clearing	Default	Mitigation Option		ROG	CO	NOx	PM10	PM2.5	SOx	CO2	CH4	N2O	CO2e	
	Number of Vehicles	Override of	Default											
	Override of Default Number of Vehicles	Default Equipment Tier (applicable only when "Tier 4 Mitigation" Option Selected)	Equipment Tier											
0.00	Program-estimate		Model Default Tier	Aerial Lifts	0.00	0.00	0.00	0.00	0.00	0.00	0.00	0.00	0.00	
0.00			Model Default Tier	Air Compressors	0.00	0.00	0.00	0.00	0.00	0.00	0.00	0.00	0.00	
0.00			Model Default Tier	Bore/Drill Rigs	0.00	0.00	0.00	0.00	0.00	0.00	0.00	0.00	0.00	
0.00			Model Default Tier	Cement and Mortar Mixers	0.00	0.00	0.00	0.00	0.00	0.00	0.00	0.00	0.00	
0.00			Model Default Tier	Concrete/Industrial Saws	0.00	0.00	0.00	0.00	0.00	0.00	0.00	0.00	0.00	
0.00			Model Default Tier	Cranes	0.00	0.00	0.00	0.00	0.00	0.00	0.00	0.00	0.00	
0.00			Model Default Tier	Crawler Tractors	0.00	0.00	0.00	0.00	0.00	0.00	0.00	0.00	0.00	
0.00			Model Default Tier	Crushing/Proc. Equipment	0.00	0.00	0.00	0.00	0.00	0.00	0.00	0.00	0.00	
2.00			Model Default Tier	Excavators	0.52	8.40	4.58	0.22	0.20	0.01	1,289.60	0.42	0.01	1,303.50
0.00			Model Default Tier	Forklifts	0.00	0.00	0.00	0.00	0.00	0.00	0.00	0.00	0.00	
0.00			Model Default Tier	Generator Sets	0.00	0.00	0.00	0.00	0.00	0.00	0.00	0.00	0.00	
0.00			Model Default Tier	Graders	0.00	0.00	0.00	0.00	0.00	0.00	0.00	0.00	0.00	
0.00			Model Default Tier	Off-Highway Tractors	0.00	0.00	0.00	0.00	0.00	0.00	0.00	0.00	0.00	
0.00			Model Default Tier	Off-Highway Trucks	0.00	0.00	0.00	0.00	0.00	0.00	0.00	0.00	0.00	
0.00			Model Default Tier	Other Construction Equipment	0.00	0.00	0.00	0.00	0.00	0.00	0.00	0.00	0.00	
0.00			Model Default Tier	Other General Industrial Equipment	0.00	0.00	0.00	0.00	0.00	0.00	0.00	0.00	0.00	
0.00			Model Default Tier	Other Material Handling Equipment	0.00	0.00	0.00	0.00	0.00	0.00	0.00	0.00	0.00	
0.00			Model Default Tier	Pavers	0.00	0.00	0.00	0.00	0.00	0.00	0.00	0.00	0.00	
0.00			Model Default Tier	Paving Equipment	0.00	0.00	0.00	0.00	0.00	0.00	0.00	0.00	0.00	
0.00			Model Default Tier	Plate Compactors	0.00	0.00	0.00	0.00	0.00	0.00	0.00	0.00	0.00	
0.00			Model Default Tier	Pressure Washers	0.00	0.00	0.00	0.00	0.00	0.00	0.00	0.00	0.00	
0.00			Model Default Tier	Pumps	0.00	0.00	0.00	0.00	0.00	0.00	0.00	0.00	0.00	
0.00			Model Default Tier	Rollers	0.00	0.00	0.00	0.00	0.00	0.00	0.00	0.00	0.00	
0.00			Model Default Tier	Rough Terrain Forklifts	0.00	0.00	0.00	0.00	0.00	0.00	0.00	0.00	0.00	
0.00			Model Default Tier	Rubber Tired Dozers	0.00	0.00	0.00	0.00	0.00	0.00	0.00	0.00	0.00	
0.00			Model Default Tier	Rubber Tired Loaders	0.00	0.00	0.00	0.00	0.00	0.00	0.00	0.00	0.00	
0.00			Model Default Tier	Scrapers	0.00	0.00	0.00	0.00	0.00	0.00	0.00	0.00	0.00	
1.00			Model Default Tier	Signal Boards	0.07	0.38	0.45	0.02	0.02	0.00	61.64	0.01	0.00	61.96
0.00			Model Default Tier	Skid Steer Loaders	0.00	0.00	0.00	0.00	0.00	0.00	0.00	0.00	0.00	
0.00			Model Default Tier	Surfacing Equipment	0.00	0.00	0.00	0.00	0.00	0.00	0.00	0.00	0.00	
1.00			Model Default Tier	Sweepers/Scrubbers	0.24	2.40	2.25	0.15	0.14	0.00	307.72	0.10	0.00	311.03
2.00			Model Default Tier	Tractors/Loaders/Backhoes	0.42	5.65	4.23	0.23	0.21	0.01	760.86	0.25	0.01	769.05
0.00			Model Default Tier	Trenchers	0.00	0.00	0.00	0.00	0.00	0.00	0.00	0.00	0.00	
0.00			Model Default Tier	Welders	0.00	0.00	0.00	0.00	0.00	0.00	0.00	0.00	0.00	
User-Defined Off-road Equipment					ROG	CO	NOx	PM10	PM2.5	SOx	CO2	CH4	N2O	CO2e
Number of Vehicles	If non-default vehicles are used, please provide information in 'Non-default Off-road Equipment' tab				pounds/day	pounds/day	pounds/day	pounds/day	pounds/day	pounds/day	pounds/day	pounds/day	pounds/day	pounds/day
0.00			N/A	Type	0	0.00	0.00	0.00	0.00	0.00	0.00	0.00	0.00	0.00
0.00			N/A		0	0.00	0.00	0.00	0.00	0.00	0.00	0.00	0.00	0.00
0.00			N/A		0	0.00	0.00	0.00	0.00	0.00	0.00	0.00	0.00	0.00
0.00			N/A		0	0.00	0.00	0.00	0.00	0.00	0.00	0.00	0.00	0.00
0.00			N/A		0	0.00	0.00	0.00	0.00	0.00	0.00	0.00	0.00	0.00
0.00			N/A		0	0.00	0.00	0.00	0.00	0.00	0.00	0.00	0.00	0.00
0.00			N/A		0	0.00	0.00	0.00	0.00	0.00	0.00	0.00	0.00	0.00
	Grubbing/Land Clearing			pounds per day	1.25	16.82	11.52	0.62	0.57	0.03	2,419.82	0.77	0.02	2,445.54
	Grubbing/Land Clearing			tons per phase	0.02	0.22	0.15	0.01	0.01	0.00	31.94	0.01	0.00	32.28

Grading/Excavation	Default		Mitigation Option		ROG	CO	NOx	PM10	PM2.5	SOx	CO2	CH4	N2O	CO2e
	Number of Vehicles	Override of	Default											
	Override of Default Number of Vehicles	Program-estimate	Default Equipment Tier (applicable only when "Tier 4 Mitigation" Option Selected)	Equipment Tier										
				Type	pounds/day	pounds/day	pounds/day	pounds/day	pounds/day	pounds/day	pounds/day	pounds/day	pounds/day	pounds/day
0.00			Model Default Tier	Aerial Lifts	0.00	0.00	0.00	0.00	0.00	0.00	0.00	0.00	0.00	0.00
0.00			Model Default Tier	Air Compressors	0.00	0.00	0.00	0.00	0.00	0.00	0.00	0.00	0.00	0.00
4.00			Model Default Tier	Bore/Dnll Rigs	1.04	9.51	10.56	0.34	0.31	0.04	4,257.78	1.38	0.04	4,303.77
0.00			Model Default Tier	Cement and Mortar Mixers	0.00	0.00	0.00	0.00	0.00	0.00	0.00	0.00	0.00	0.00
0.00			Model Default Tier	Concrete/Industrial Saws	0.00	0.00	0.00	0.00	0.00	0.00	0.00	0.00	0.00	0.00
4.00			Model Default Tier	Cranes	1.82	9.26	20.47	0.85	0.78	0.03	2,733.67	0.88	0.02	2,763.14
0.00			Model Default Tier	Crawler Tractors	0.00	0.00	0.00	0.00	0.00	0.00	0.00	0.00	0.00	0.00
0.00			Model Default Tier	Crushing/Proc. Equipment	0.00	0.00	0.00	0.00	0.00	0.00	0.00	0.00	0.00	0.00
10.00			Model Default Tier	Excavators	2.61	41.98	22.92	1.11	1.02	0.07	6,447.99	2.09	0.06	6,517.51
0.00			Model Default Tier	Forklifts	0.00	0.00	0.00	0.00	0.00	0.00	0.00	0.00	0.00	0.00
1.00			Model Default Tier	Generator Sets	0.41	4.59	3.66	0.18	0.18	0.01	778.79	0.04	0.01	781.46
4.00			Model Default Tier	Graders	2.79	22.10	26.10	1.45	1.33	0.03	3,028.02	0.98	0.03	3,060.56
0.00			Model Default Tier	Off-Highway Tractors	0.00	0.00	0.00	0.00	0.00	0.00	0.00	0.00	0.00	0.00
0.00			Model Default Tier	Off-Highway Trucks	0.00	0.00	0.00	0.00	0.00	0.00	0.00	0.00	0.00	0.00
0.00			Model Default Tier	Other Construction Equipment	0.00	0.00	0.00	0.00	0.00	0.00	0.00	0.00	0.00	0.00
0.00			Model Default Tier	Other General Industrial Equipment	0.00	0.00	0.00	0.00	0.00	0.00	0.00	0.00	0.00	0.00
16.00			Model Default Tier	Other Material Handling Equipment	5.32	74.84	44.62	2.42	2.23	0.12	11,126.92	3.60	0.10	11,246.88
0.00			Model Default Tier	Pavers	0.00	0.00	0.00	0.00	0.00	0.00	0.00	0.00	0.00	0.00
0.00			Model Default Tier	Paving Equipment	0.00	0.00	0.00	0.00	0.00	0.00	0.00	0.00	0.00	0.00
0.00			Model Default Tier	Plate Compactors	0.00	0.00	0.00	0.00	0.00	0.00	0.00	0.00	0.00	0.00
0.00			Model Default Tier	Pressure Washers	0.00	0.00	0.00	0.00	0.00	0.00	0.00	0.00	0.00	0.00
0.00			Model Default Tier	Pumps	0.00	0.00	0.00	0.00	0.00	0.00	0.00	0.00	0.00	0.00
6.00			Model Default Tier	Rollers	1.26	14.13	13.11	0.76	0.70	0.02	1,929.60	0.62	0.02	1,950.39
10.00			Model Default Tier	Rough Terrain Forklifts	1.40	28.60	18.50	0.65	0.59	0.04	4,171.93	1.35	0.04	4,216.90
10.00			Model Default Tier	Rubber Tired Dozers	10.68	87.59	108.11	4.94	4.55	0.11	10,778.34	3.49	0.10	10,894.12
0.00			Model Default Tier	Rubber Tired Loaders	0.00	0.00	0.00	0.00	0.00	0.00	0.00	0.00	0.00	0.00
0.00			Model Default Tier	Scrapers	0.00	0.00	0.00	0.00	0.00	0.00	0.00	0.00	0.00	0.00
6.00			Model Default Tier	Signal Boards	0.43	2.26	2.70	0.10	0.10	0.01	369.85	0.04	0.00	371.73
0.00			Model Default Tier	Skid Steer Loaders	0.00	0.00	0.00	0.00	0.00	0.00	0.00	0.00	0.00	0.00
0.00			Model Default Tier	Surfacing Equipment	0.00	0.00	0.00	0.00	0.00	0.00	0.00	0.00	0.00	0.00
1.00			Model Default Tier	Sweepers/Scrubbers	0.24	2.40	2.25	0.15	0.14	0.00	307.72	0.10	0.00	311.03
6.00			Model Default Tier	Tractors/Loaders/Backhoes	1.25	16.96	12.70	0.68	0.63	0.02	2,282.59	0.74	0.02	2,307.15
0.00			Model Default Tier	Trenchers	0.00	0.00	0.00	0.00	0.00	0.00	0.00	0.00	0.00	0.00
0.00			Model Default Tier	Welders	0.00	0.00	0.00	0.00	0.00	0.00	0.00	0.00	0.00	0.00
User-Defined Off-road Equipment	If non-default vehicles are used, please provide information in 'Non-default Off-road Equipment' tab				ROG	CO	NOx	PM10	PM2.5	SOx	CO2	CH4	N2O	CO2e
	Number of Vehicles		Equipment Tier	Type	pounds/day	pounds/day	pounds/day	pounds/day	pounds/day	pounds/day	pounds/day	pounds/day	pounds/day	pounds/day
0.00			N/A		0	0.00	0.00	0.00	0.00	0.00	0.00	0.00	0.00	0.00
0.00			N/A		0	0.00	0.00	0.00	0.00	0.00	0.00	0.00	0.00	0.00
0.00			N/A		0	0.00	0.00	0.00	0.00	0.00	0.00	0.00	0.00	0.00
0.00			N/A		0	0.00	0.00	0.00	0.00	0.00	0.00	0.00	0.00	0.00
0.00			N/A		0	0.00	0.00	0.00	0.00	0.00	0.00	0.00	0.00	0.00
0.00			N/A		0	0.00	0.00	0.00	0.00	0.00	0.00	0.00	0.00	0.00
0.00			N/A		0	0.00	0.00	0.00	0.00	0.00	0.00	0.00	0.00	0.00
	Grading/Excavation			pounds per day	29.25	314.21	285.70	13.64	12.57	0.50	48,213.20	15.30	0.43	48,724.65
	Grading/Excavation			tons per phase	1.80	19.36	17.60	0.84	0.77	0.03	2,969.93	0.94	0.03	3,001.44

Drainage/Utilities/Subgrade		Default Number of Vehicles	Mitigation Option Override of Default Equipment Tier (applicable only when "Tier 4 Mitigation" Option Selected)	Default Equipment Tier	ROG	CO	NOx	PM10	PM2.5	SOx	CO2	CH4	N2O	CO2e
Override of Default Number of Vehicles		Program-estimate			pounds/day	pounds/day	pounds/day	pounds/day	pounds/day	pounds/day	pounds/day	pounds/day	pounds/day	pounds/day
0.00				Model Default Tier	Aerial Lifts	0.00	0.00	0.00	0.00	0.00	0.00	0.00	0.00	0.00
0.00				Model Default Tier	Air Compressors	0.00	0.00	0.00	0.00	0.00	0.00	0.00	0.00	0.00
0.00				Model Default Tier	Bore/Dnll Rigs	0.00	0.00	0.00	0.00	0.00	0.00	0.00	0.00	0.00
0.00				Model Default Tier	Cement and Mortar Mixers	0.00	0.00	0.00	0.00	0.00	0.00	0.00	0.00	0.00
0.00				Model Default Tier	Concrete/Industrial Saws	0.00	0.00	0.00	0.00	0.00	0.00	0.00	0.00	0.00
0.00				Model Default Tier	Cranes	0.00	0.00	0.00	0.00	0.00	0.00	0.00	0.00	0.00
0.00				Model Default Tier	Crawler Tractors	0.00	0.00	0.00	0.00	0.00	0.00	0.00	0.00	0.00
0.00				Model Default Tier	Crushing/Proc. Equipment	0.00	0.00	0.00	0.00	0.00	0.00	0.00	0.00	0.00
0.00				Model Default Tier	Excavators	0.00	0.00	0.00	0.00	0.00	0.00	0.00	0.00	0.00
0.00				Model Default Tier	Forklifts	0.00	0.00	0.00	0.00	0.00	0.00	0.00	0.00	0.00
0.00				Model Default Tier	Generator Sets	0.00	0.00	0.00	0.00	0.00	0.00	0.00	0.00	0.00
0.00				Model Default Tier	Graders	0.00	0.00	0.00	0.00	0.00	0.00	0.00	0.00	0.00
0.00				Model Default Tier	Off-Highway Tractors	0.00	0.00	0.00	0.00	0.00	0.00	0.00	0.00	0.00
0.00				Model Default Tier	Off-Highway Trucks	0.00	0.00	0.00	0.00	0.00	0.00	0.00	0.00	0.00
0.00				Model Default Tier	Other Construction Equipment	0.00	0.00	0.00	0.00	0.00	0.00	0.00	0.00	0.00
0.00				Model Default Tier	Other General Industrial Equipment	0.00	0.00	0.00	0.00	0.00	0.00	0.00	0.00	0.00
0.00				Model Default Tier	Other Material Handling Equipment	0.00	0.00	0.00	0.00	0.00	0.00	0.00	0.00	0.00
0.00				Model Default Tier	Pavers	0.00	0.00	0.00	0.00	0.00	0.00	0.00	0.00	0.00
0.00				Model Default Tier	Paving Equipment	0.00	0.00	0.00	0.00	0.00	0.00	0.00	0.00	0.00
0.00				Model Default Tier	Plate Compactors	0.00	0.00	0.00	0.00	0.00	0.00	0.00	0.00	0.00
0.00				Model Default Tier	Pressure Washers	0.00	0.00	0.00	0.00	0.00	0.00	0.00	0.00	0.00
0.00				Model Default Tier	Pumps	0.00	0.00	0.00	0.00	0.00	0.00	0.00	0.00	0.00
0.00				Model Default Tier	Rollers	0.00	0.00	0.00	0.00	0.00	0.00	0.00	0.00	0.00
0.00				Model Default Tier	Rough Terrain Forklifts	0.00	0.00	0.00	0.00	0.00	0.00	0.00	0.00	0.00
0.00				Model Default Tier	Rubber Tired Dozers	0.00	0.00	0.00	0.00	0.00	0.00	0.00	0.00	0.00
0.00				Model Default Tier	Rubber Tired Loaders	0.00	0.00	0.00	0.00	0.00	0.00	0.00	0.00	0.00
0.00				Model Default Tier	Scrapers	0.00	0.00	0.00	0.00	0.00	0.00	0.00	0.00	0.00
0.00				Model Default Tier	Signal Boards	0.00	0.00	0.00	0.00	0.00	0.00	0.00	0.00	0.00
0.00				Model Default Tier	Skid Steer Loaders	0.00	0.00	0.00	0.00	0.00	0.00	0.00	0.00	0.00
0.00				Model Default Tier	Surfacing Equipment	0.00	0.00	0.00	0.00	0.00	0.00	0.00	0.00	0.00
0.00				Model Default Tier	Sweepers/Scrubbers	0.00	0.00	0.00	0.00	0.00	0.00	0.00	0.00	0.00
0.00				Model Default Tier	Tractors/Loaders/Backhoes	0.00	0.00	0.00	0.00	0.00	0.00	0.00	0.00	0.00
0.00				Model Default Tier	Trenchers	0.00	0.00	0.00	0.00	0.00	0.00	0.00	0.00	0.00
0.00				Model Default Tier	Welders	0.00	0.00	0.00	0.00	0.00	0.00	0.00	0.00	0.00
User-Defined Off-road Equipment														
					If non-default vehicles are used, please provide information in 'Non-default Off-road Equipment' tab									
Number of Vehicles		Equipment Tier		Type	ROG	CO	NOx	PM10	PM2.5	SOx	CO2	CH4	N2O	CO2e
0.00		N/A		0	0.00	0.00	0.00	0.00	0.00	0.00	0.00	0.00	0.00	0.00
0.00		N/A		0	0.00	0.00	0.00	0.00	0.00	0.00	0.00	0.00	0.00	0.00
0.00		N/A		0	0.00	0.00	0.00	0.00	0.00	0.00	0.00	0.00	0.00	0.00
0.00		N/A		0	0.00	0.00	0.00	0.00	0.00	0.00	0.00	0.00	0.00	0.00
0.00		N/A		0	0.00	0.00	0.00	0.00	0.00	0.00	0.00	0.00	0.00	0.00
0.00		N/A		0	0.00	0.00	0.00	0.00	0.00	0.00	0.00	0.00	0.00	0.00
0.00		N/A		0	0.00	0.00	0.00	0.00	0.00	0.00	0.00	0.00	0.00	0.00
Drainage/Utilities/Sub-Grade				pounds per day	0.00	0.00	0.00	0.00	0.00	0.00	0.00	0.00	0.00	0.00
Drainage/Utilities/Sub-Grade				tons per phase	0.00	0.00	0.00	0.00	0.00	0.00	0.00	0.00	0.00	0.00

Paving	Default		Mitigation Option		ROG	CO	NOx	PM10	PM2.5	SOx	CO2	CH4	N2O	CO2e
	Number of Vehicles		Override of	Default										
	Override of Default Number of Vehicles	Program-estimate	Default Equipment Tier (applicable only when "Tier 4 Mitigation" Option Selected)	Equipment Tier										
	0.00			Model Default Tier	Aerial Lifts	0.00	0.00	0.00	0.00	0.00	0.00	0.00	0.00	0.00
	0.00			Model Default Tier	Air Compressors	0.00	0.00	0.00	0.00	0.00	0.00	0.00	0.00	0.00
	0.00			Model Default Tier	Bore/DnH Rigs	0.00	0.00	0.00	0.00	0.00	0.00	0.00	0.00	0.00
	0.00			Model Default Tier	Cement and Mortar Mixers	0.00	0.00	0.00	0.00	0.00	0.00	0.00	0.00	0.00
	0.00			Model Default Tier	Concrete/Industrial Saws	0.00	0.00	0.00	0.00	0.00	0.00	0.00	0.00	0.00
	0.00			Model Default Tier	Cranes	0.00	0.00	0.00	0.00	0.00	0.00	0.00	0.00	0.00
	0.00			Model Default Tier	Crawler Tractors	0.00	0.00	0.00	0.00	0.00	0.00	0.00	0.00	0.00
	0.00			Model Default Tier	Crushing/Proc. Equipment	0.00	0.00	0.00	0.00	0.00	0.00	0.00	0.00	0.00
	0.00			Model Default Tier	Excavators	0.00	0.00	0.00	0.00	0.00	0.00	0.00	0.00	0.00
	0.00			Model Default Tier	Forklifts	0.00	0.00	0.00	0.00	0.00	0.00	0.00	0.00	0.00
	0.00			Model Default Tier	Generator Sets	0.00	0.00	0.00	0.00	0.00	0.00	0.00	0.00	0.00
	0.00			Model Default Tier	Graders	0.00	0.00	0.00	0.00	0.00	0.00	0.00	0.00	0.00
	0.00			Model Default Tier	Off-Highway Tractors	0.00	0.00	0.00	0.00	0.00	0.00	0.00	0.00	0.00
	0.00			Model Default Tier	Off-Highway Trucks	0.00	0.00	0.00	0.00	0.00	0.00	0.00	0.00	0.00
	0.00			Model Default Tier	Other Construction Equipment	0.00	0.00	0.00	0.00	0.00	0.00	0.00	0.00	0.00
	0.00			Model Default Tier	Other General Industrial Equipment	0.00	0.00	0.00	0.00	0.00	0.00	0.00	0.00	0.00
	0.00			Model Default Tier	Other Material Handling Equipment	0.00	0.00	0.00	0.00	0.00	0.00	0.00	0.00	0.00
	0.00			Model Default Tier	Pavers	0.00	0.00	0.00	0.00	0.00	0.00	0.00	0.00	0.00
	0.00			Model Default Tier	Paving Equipment	0.00	0.00	0.00	0.00	0.00	0.00	0.00	0.00	0.00
	0.00			Model Default Tier	Plate Compactors	0.00	0.00	0.00	0.00	0.00	0.00	0.00	0.00	0.00
	0.00			Model Default Tier	Pressure Washers	0.00	0.00	0.00	0.00	0.00	0.00	0.00	0.00	0.00
	0.00			Model Default Tier	Pumps	0.00	0.00	0.00	0.00	0.00	0.00	0.00	0.00	0.00
	0.00			Model Default Tier	Rollers	0.00	0.00	0.00	0.00	0.00	0.00	0.00	0.00	0.00
	0.00			Model Default Tier	Rough Terrain Forklifts	0.00	0.00	0.00	0.00	0.00	0.00	0.00	0.00	0.00
	0.00			Model Default Tier	Rubber Tired Dozers	0.00	0.00	0.00	0.00	0.00	0.00	0.00	0.00	0.00
	0.00			Model Default Tier	Rubber Tired Loaders	0.00	0.00	0.00	0.00	0.00	0.00	0.00	0.00	0.00
	0.00			Model Default Tier	Scrapers	0.00	0.00	0.00	0.00	0.00	0.00	0.00	0.00	0.00
	0.00			Model Default Tier	Signal Boards	0.00	0.00	0.00	0.00	0.00	0.00	0.00	0.00	0.00
	0.00			Model Default Tier	Skid Steer Loaders	0.00	0.00	0.00	0.00	0.00	0.00	0.00	0.00	0.00
	0.00			Model Default Tier	Surfacing Equipment	0.00	0.00	0.00	0.00	0.00	0.00	0.00	0.00	0.00
	0.00			Model Default Tier	Sweepers/Scrubbers	0.00	0.00	0.00	0.00	0.00	0.00	0.00	0.00	0.00
	0.00			Model Default Tier	Tractors/Loaders/Backhoes	0.00	0.00	0.00	0.00	0.00	0.00	0.00	0.00	0.00
	0.00			Model Default Tier	Trenchers	0.00	0.00	0.00	0.00	0.00	0.00	0.00	0.00	0.00
	0.00			Model Default Tier	Welders	0.00	0.00	0.00	0.00	0.00	0.00	0.00	0.00	0.00
User-Defined Off-road Equipment	If non-default vehicles are used, please provide information in 'Non-default Off-road Equipment' tab				ROG	CO	NOx	PM10	PM2.5	SOx	CO2	CH4	N2O	CO2e
	Number of Vehicles		Equipment Tier	Type	pounds/day	pounds/day	pounds/day	pounds/day	pounds/day	pounds/day	pounds/day	pounds/day	pounds/day	pounds/day
	0.00		N/A		0	0.00	0.00	0.00	0.00	0.00	0.00	0.00	0.00	0.00
	0.00		N/A		0	0.00	0.00	0.00	0.00	0.00	0.00	0.00	0.00	0.00
	0.00		N/A		0	0.00	0.00	0.00	0.00	0.00	0.00	0.00	0.00	0.00
	0.00		N/A		0	0.00	0.00	0.00	0.00	0.00	0.00	0.00	0.00	0.00
	0.00		N/A		0	0.00	0.00	0.00	0.00	0.00	0.00	0.00	0.00	0.00
	0.00		N/A		0	0.00	0.00	0.00	0.00	0.00	0.00	0.00	0.00	0.00
	0.00		N/A		0	0.00	0.00	0.00	0.00	0.00	0.00	0.00	0.00	0.00
		Paving		pounds per day	0.00	0.00	0.00	0.00	0.00	0.00	0.00	0.00	0.00	0.00
		Paving		tons per phase	0.00	0.00	0.00	0.00	0.00	0.00	0.00	0.00	0.00	0.00
Total Emissions all Phases (tons per construction period) =>					1.82	19.58	17.75	0.85	0.78	0.03	3,001.87	0.95	0.03	3,033.72

Equipment default values for horsepower and hours/day can be overridden in cells D391 through D424 and F391 through F424.

Equipment	User Override of Horsepower	Default Values Horsepower	User Override of Hours/day	Default Values Hours/day
Aerial Lifts		63	10.00	8
Air Compressors		78	10.00	8
Bore/Drill Rigs		206	10.00	8
Cement and Mortar Mixers		9	10.00	8
Concrete/Industrial Saws		81	10.00	8
Cranes		226	10.00	8
Crawler Tractors		208	10.00	8
Crushing/Proc. Equipment		85	10.00	8
Excavators		163	10.00	8
Forklifts		89	10.00	8
Generator Sets		84	10.00	8
Graders		175	10.00	8
Off-Highway Tractors		123	10.00	8
Off-Highway Trucks		400	10.00	8
Other Construction Equipment		172	10.00	8
Other General Industrial Equipment		88	10.00	8
Other Material Handling Equipment		167	10.00	8
Pavers		126	10.00	8
Paving Equipment		131	10.00	8
Plate Compactors		8	10.00	8
Pressure Washers		13	10.00	8
Pumps		84	10.00	8
Rollers		81	10.00	8
Rough Terrain Forklifts		100	10.00	8
Rubber Tired Dozers		255	10.00	8
Rubber Tired Loaders		200	10.00	8
Scrapers		362	10.00	8
Signal Boards		6	10.00	8
Skid Steer Loaders		65	10.00	8
Surfacing Equipment		254	10.00	8
Sweepers/Scrubbers		64	10.00	8
Tractors/Loaders/Backhoes		98	10.00	8
Trenchers		81	10.00	8
Welders		46	10.00	8

END OF DATA ENTRY SHEET

The maximum pounds per day in row 11 is summed over overlapping phases, but the maximum tons per phase in row 34 is not summed over overlapping phases.

Road Construction Emissions Model, Version 8.1.0

Daily Emission Estimates for -> Sac River S/S Contract 3: 2022 Vegetation and Cutoff Wall													Total	Exhaust	Fugitive Dust	Total	Exhaust	Fugitive Dust
Project Phases (Pounds)	ROG (lbs/day)	CO (lbs/day)	NOx (lbs/day)	PM10 (lbs/day)	PM10 (lbs/day)	PM10 (lbs/day)	PM2.5 (lbs/day)	PM2.5 (lbs/day)	PM2.5 (lbs/day)	SOx (lbs/day)	CO2 (lbs/day)	CH4 (lbs/day)	N2O (lbs/day)	CO2e (lbs/day)				
Grubbing/Land Clearing	1.35	18.19	12.48	50.70	0.70	50.00	11.01	0.61	10.40	0.03	3,270.08	0.78	0.04	3,301.77				
Grading/Excavation	30.96	328.37	325.42	65.40	15.40	50.00	23.73	13.33	10.40	0.71	70,506.79	15.42	1.12	71,225.98				
Drainage/Utilities/Sub-Grade	0.00	0.00	0.00	0.00	0.00	0.00	0.00	0.00	0.00	0.00	0.00	0.00	0.00	0.00				
Paving	0.00	0.00	0.00	0.00	0.00	0.00	0.00	0.00	0.00	0.00	0.00	0.00	0.00	0.00				
Maximum (pounds/day)	30.96	328.37	325.42	65.40	15.40	50.00	23.73	13.33	10.40	0.71	70,506.79	15.42	1.12	71,225.98				
Total (tons/construction project)	1.93	20.47	20.21	4.70	0.96	3.74	1.61	0.83	0.78	0.04	4,386.38	0.96	0.07	4,431.10				

Notes:
 Project Start Year -> 2022
 Project Length (months) -> 7
 Total Project Area (acres) -> 28
 Maximum Area Disturbed/Day (acres) -> 5
 Water Truck Used? -> Yes

Phase	Total Material Imported/Exported Volume (yd ³ /day)		Daily VMT (miles/day)			
	Soil	Asphalt	Soil Hauling	Asphalt Hauling	Worker Commute	Water Truck
Grubbing/Land Clearing	35	0	78	0	560	40
Grading/Excavation	1,958	0	5,371	0	4,000	80
Drainage/Utilities/Sub-Grade	0	0	0	0	0	0
Paving	0	0	0	0	0	0

PM10 and PM2.5 estimates assume 50% control of fugitive dust from watering and associated dust control measures if a minimum number of water trucks are specified.

Total PM10 emissions shown in column F are the sum of exhaust and fugitive dust emissions shown in columns G and H. Total PM2.5 emissions shown in Column I are the sum of exhaust and fugitive dust emissions shown in columns J and K.

CO2e emissions are estimated by multiplying mass emissions for each GHG by its global warming potential (GWP), 1, 25 and 298 for CO2, CH4 and N2O, respectively. Total CO2e is then estimated by summing CO2e estimates over all GHGs.

Total Emission Estimates by Phase for -> Sac River S/S Contract 3: 2022 Vegetation and Cutoff Wall													Total	Exhaust	Fugitive Dust	Total	Exhaust	Fugitive Dust
Project Phases (Tons for all except CO2e. Metric tonnes for CO2e)	ROG (tons/phase)	CO (tons/phase)	NOx (tons/phase)	PM10 (tons/phase)	PM10 (tons/phase)	PM10 (tons/phase)	PM2.5 (tons/phase)	PM2.5 (tons/phase)	PM2.5 (tons/phase)	SOx (tons/phase)	CO2 (tons/phase)	CH4 (tons/phase)	N2O (tons/phase)	CO2e (MT/phase)				
Grubbing/Land Clearing	0.02	0.24	0.16	0.67	0.01	0.66	0.15	0.01	0.14	0.00	43.17	0.01	0.00	39.54				
Grading/Excavation	1.91	20.23	20.05	4.03	0.95	3.08	1.46	0.82	0.64	0.04	4,343.22	0.95	0.07	3,980.33				
Drainage/Utilities/Sub-Grade	0.00	0.00	0.00	0.00	0.00	0.00	0.00	0.00	0.00	0.00	0.00	0.00	0.00	0.00				
Paving	0.00	0.00	0.00	0.00	0.00	0.00	0.00	0.00	0.00	0.00	0.00	0.00	0.00	0.00				
Maximum (tons/phase)	1.91	20.23	20.05	4.03	0.95	3.08	1.46	0.82	0.64	0.04	4,343.22	0.95	0.07	3,980.33				
Total (tons/construction project)	1.93	20.47	20.21	4.70	0.96	3.74	1.61	0.83	0.78	0.04	4,386.38	0.96	0.07	4,019.87				

PM10 and PM2.5 estimates assume 50% control of fugitive dust from watering and associated dust control measures if a minimum number of water trucks are specified.

Total PM10 emissions shown in column F are the sum of exhaust and fugitive dust emissions shown in columns G and H. Total PM2.5 emissions shown in Column I are the sum of exhaust and fugitive dust emissions shown in columns J and K.

CO2e emissions are estimated by multiplying mass emissions for each GHG by its global warming potential (GWP), 1, 25 and 298 for CO2, CH4 and N2O, respectively. Total CO2e is then estimated by summing CO2e estimates over all GHGs.

The CO2e emissions are reported as metric tons per phase.

The maximum pounds per day in row 11 is summed over overlapping phases, but the maximum tons per phase in row 34 is not summed over overlapping phases.

Road Construction Emissions Model, Version 8.1.0

Daily Emission Estimates for -> Sac River S/S Contract 3: 2022 Vegetation and Cutoff Wall													Total	Exhaust	Fugitive Dust	Total	Exhaust	Fugitive Dust
Project Phases (Pounds)	ROG (lbs/day)	CO (lbs/day)	NOx (lbs/day)	PM10 (lbs/day)	PM10 (lbs/day)	PM10 (lbs/day)	PM2.5 (lbs/day)	PM2.5 (lbs/day)	PM2.5 (lbs/day)	SOx (lbs/day)	CO2 (lbs/day)	CH4 (lbs/day)	N2O (lbs/day)	CO2e (lbs/day)				
Grubbing/Land Clearing	1.34	18.18	12.00	50.70	0.70	50.00	11.00	0.60	10.40	0.03	3,257.62	0.78	0.04	3,289.06				
Grading/Excavation	30.59	327.68	303.28	65.28	15.28	50.00	23.62	13.22	10.40	0.71	69,931.17	15.40	1.08	70,638.50				
Drainage/Utilities/Sub-Grade	0.00	0.00	0.00	0.00	0.00	0.00	0.00	0.00	0.00	0.00	0.00	0.00	0.00	0.00				
Paving	0.00	0.00	0.00	0.00	0.00	0.00	0.00	0.00	0.00	0.00	0.00	0.00	0.00	0.00				
Maximum (pounds/day)	30.59	327.68	303.28	65.28	15.28	50.00	23.62	13.22	10.40	0.71	69,931.17	15.40	1.08	70,638.50				
Total (tons/construction project)	1.90	20.42	18.84	4.69	0.95	3.74	1.60	0.82	0.78	0.04	4,350.76	0.96	0.07	4,394.75				

Notes:
 Project Start Year -> 2022
 Project Length (months) -> 7
 Total Project Area (acres) -> 28
 Maximum Area Disturbed/Day (acres) -> 5
 Water Truck Used? -> Yes

Phase	Total Material Imported/Exported Volume (yd ³ /day)		Daily VMT (miles/day)			
	Soil	Asphalt	Soil Hauling	Asphalt Hauling	Worker Commute	Water Truck
Grubbing/Land Clearing	35	0	78	0	560	40
Grading/Excavation	1,958	0	5,371	0	4,000	80
Drainage/Utilities/Sub-Grade	0	0	0	0	0	0
Paving	0	0	0	0	0	0

PM10 and PM2.5 estimates assume 50% control of fugitive dust from watering and associated dust control measures if a minimum number of water trucks are specified.

Total PM10 emissions shown in column F are the sum of exhaust and fugitive dust emissions shown in columns G and H. Total PM2.5 emissions shown in Column I are the sum of exhaust and fugitive dust emissions shown in columns J and K.

CO2e emissions are estimated by multiplying mass emissions for each GHG by its global warming potential (GWP), 1, 25 and 298 for CO2, CH4 and N2O, respectively. Total CO2e is then estimated by summing CO2e estimates over all GHGs.

Total Emission Estimates by Phase for -> Sac River S/S Contract 3: 2022 Vegetation and Cutoff Wall													Total	Exhaust	Fugitive Dust	Total	Exhaust	Fugitive Dust
Project Phases (Tons for all except CO2e. Metric tonnes for CO2e)	ROG (tons/phase)	CO (tons/phase)	NOx (tons/phase)	PM10 (tons/phase)	PM10 (tons/phase)	PM10 (tons/phase)	PM2.5 (tons/phase)	PM2.5 (tons/phase)	PM2.5 (tons/phase)	SOx (tons/phase)	CO2 (tons/phase)	CH4 (tons/phase)	N2O (tons/phase)	CO2e (MT/phase)				
Grubbing/Land Clearing	0.02	0.24	0.16	0.67	0.01	0.66	0.15	0.01	0.14	0.00	43.00	0.01	0.00	39.39				
Grading/Excavation	1.88	20.18	18.68	4.02	0.94	3.08	1.46	0.81	0.64	0.04	4,307.76	0.95	0.07	3,947.50				
Drainage/Utilities/Sub-Grade	0.00	0.00	0.00	0.00	0.00	0.00	0.00	0.00	0.00	0.00	0.00	0.00	0.00	0.00				
Paving	0.00	0.00	0.00	0.00	0.00	0.00	0.00	0.00	0.00	0.00	0.00	0.00	0.00	0.00				
Maximum (tons/phase)	1.88	20.18	18.68	4.02	0.94	3.08	1.46	0.81	0.64	0.04	4,307.76	0.95	0.07	3,947.50				
Total (tons/construction project)	1.90	20.42	18.84	4.69	0.95	3.74	1.60	0.82	0.78	0.04	4,350.76	0.96	0.07	3,986.89				

PM10 and PM2.5 estimates assume 50% control of fugitive dust from watering and associated dust control measures if a minimum number of water trucks are specified.

Total PM10 emissions shown in column F are the sum of exhaust and fugitive dust emissions shown in columns G and H. Total PM2.5 emissions shown in Column I are the sum of exhaust and fugitive dust emissions shown in columns J and K.

CO2e emissions are estimated by multiplying mass emissions for each GHG by its global warming potential (GWP), 1, 25 and 298 for CO2, CH4 and N2O, respectively. Total CO2e is then estimated by summing CO2e estimates over all GHGs.

The CO2e emissions are reported as metric tons per phase.

The maximum pounds per day in row 11 is summed over overlapping phases, but the maximum tons per phase in row 34 is not summed over overlapping phases.

Road Construction Emissions Model, Version 8.1.0

Daily Emission Estimates for -> Sac River S/S Contract 3: 2022 Vegetation and Cutoff Wall														
Project Phases (Pounds)	ROG (lbs/day)	CO (lbs/day)	NOx (lbs/day)	Total PM10 (lbs/day)	Exhaust PM10 (lbs/day)	Fugitive Dust PM10 (lbs/day)	Total PM2.5 (lbs/day)	Exhaust PM2.5 (lbs/day)	Fugitive Dust PM2.5 (lbs/day)	SOx (lbs/day)	CO2 (lbs/day)	CH4 (lbs/day)	N2O (lbs/day)	CO2e (lbs/day)
Grubbing/Land Clearing	0.89	20.43	4.52	50.19	0.19	50.00	10.54	0.14	10.40	0.03	3,257.62	0.78	0.04	3,289.06
Grading/Excavation	16.63	341.55	53.19	53.35	3.35	50.00	12.63	2.23	10.40	0.71	69,931.17	15.40	1.08	70,638.50
Drainage/Utilities/Sub-Grade	0.00	0.00	0.00	0.00	0.00	0.00	0.00	0.00	0.00	0.00	0.00	0.00	0.00	0.00
Paving	0.00	0.00	0.00	0.00	0.00	0.00	0.00	0.00	0.00	0.00	0.00	0.00	0.00	0.00
Maximum (pounds/day)	16.63	341.55	53.19	53.35	3.35	50.00	12.63	2.23	10.40	0.71	69,931.17	15.40	1.08	70,638.50
Total (tons/construction project)	1.04	21.31	3.34	3.95	0.21	3.74	0.92	0.14	0.78	0.04	4,350.76	0.96	0.07	4,394.75

Notes:
 Project Start Year -> 2022
 Project Length (months) -> 7
 Total Project Area (acres) -> 28
 Maximum Area Disturbed/Day (acres) -> 5
 Water Truck Used? -> Yes

Phase	Total Material Imported/Exported Volume (yd ³ /day)		Daily VMT (miles/day)			
	Soil	Asphalt	Soil Hauling	Asphalt Hauling	Worker Commute	Water Truck
Grubbing/Land Clearing	35	0	78	0	560	40
Grading/Excavation	1,958	0	5,371	0	4,000	80
Drainage/Utilities/Sub-Grade	0	0	0	0	0	0
Paving	0	0	0	0	0	0

PM10 and PM2.5 estimates assume 50% control of fugitive dust from watering and associated dust control measures if a minimum number of water trucks are specified.

Total PM10 emissions shown in column F are the sum of exhaust and fugitive dust emissions shown in columns G and H. Total PM2.5 emissions shown in Column I are the sum of exhaust and fugitive dust emissions shown in columns J and K.

CO2e emissions are estimated by multiplying mass emissions for each GHG by its global warming potential (GWP), 1, .25 and 298 for CO2, CH4 and N2O, respectively. Total CO2e is then estimated by summing CO2e estimates over all GHGs.

Total Emission Estimates by Phase for -> Sac River S/S Contract 3: 2022 Vegetation and Cutoff Wall														
Project Phases (Tons for all except CO2e. Metric tonnes for CO2e)	ROG (tons/phase)	CO (tons/phase)	NOx (tons/phase)	Total PM10 (tons/phase)	Exhaust PM10 (tons/phase)	Fugitive Dust PM10 (tons/phase)	Total PM2.5 (tons/phase)	Exhaust PM2.5 (tons/phase)	Fugitive Dust PM2.5 (tons/phase)	SOx (tons/phase)	CO2 (tons/phase)	CH4 (tons/phase)	N2O (tons/phase)	CO2e (MT/phase)
Grubbing/Land Clearing	0.01	0.27	0.06	0.66	0.00	0.66	0.14	0.00	0.14	0.00	43.00	0.01	0.00	39.39
Grading/Excavation	1.02	21.04	3.28	3.29	0.21	3.08	0.78	0.14	0.64	0.04	4,307.76	0.95	0.07	3,947.50
Drainage/Utilities/Sub-Grade	0.00	0.00	0.00	0.00	0.00	0.00	0.00	0.00	0.00	0.00	0.00	0.00	0.00	0.00
Paving	0.00	0.00	0.00	0.00	0.00	0.00	0.00	0.00	0.00	0.00	0.00	0.00	0.00	0.00
Maximum (tons/phase)	1.02	21.04	3.28	3.29	0.21	3.08	0.78	0.14	0.64	0.04	4,307.76	0.95	0.07	3,947.50
Total (tons/construction project)	1.04	21.31	3.34	3.95	0.21	3.74	0.92	0.14	0.78	0.04	4,350.76	0.96	0.07	3,986.89

PM10 and PM2.5 estimates assume 50% control of fugitive dust from watering and associated dust control measures if a minimum number of water trucks are specified.

Total PM10 emissions shown in column F are the sum of exhaust and fugitive dust emissions shown in columns G and H. Total PM2.5 emissions shown in Column I are the sum of exhaust and fugitive dust emissions shown in columns J and K.

CO2e emissions are estimated by multiplying mass emissions for each GHG by its global warming potential (GWP), 1, .25 and 298 for CO2, CH4 and N2O, respectively. Total CO2e is then estimated by summing CO2e estimates over all GHGs.

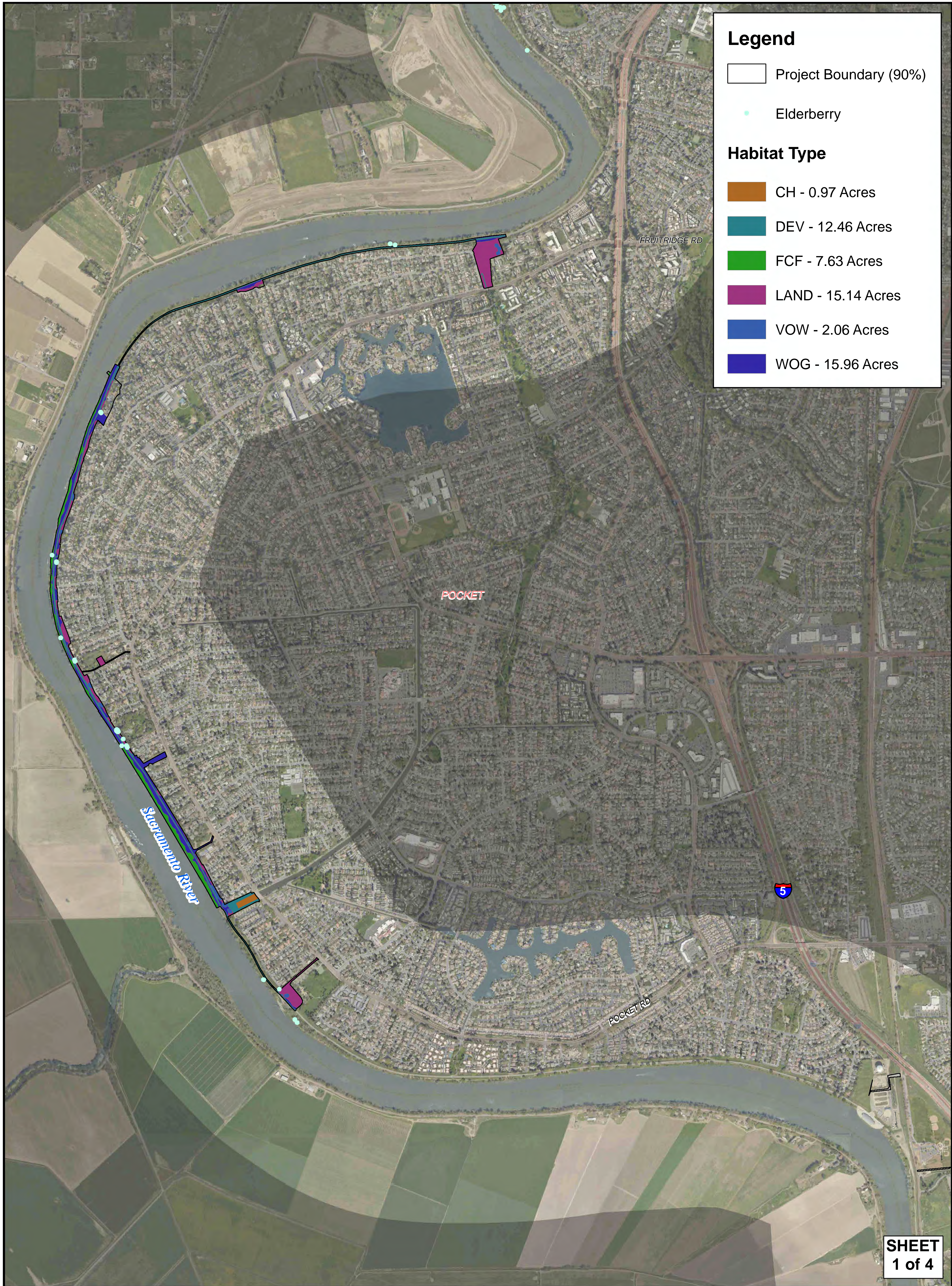
The CO2e emissions are reported as metric tons per phase.

APPENDIX B. BIOLOGICAL RESOURCES DATA

Appendix B-1: Land Cover Maps and Sensitive Biological Resources

Appendix B-2: Species Lists

Appendix B-3: Special-Status Species Occurrence Tables



Legend

- Project Boundary (90%)
- Elderberry

Habitat Type

- CH - 0.97 Acres
- DEV - 12.46 Acres
- FCF - 7.63 Acres
- LAND - 15.14 Acres
- VOW - 2.06 Acres
- WOG - 15.96 Acres

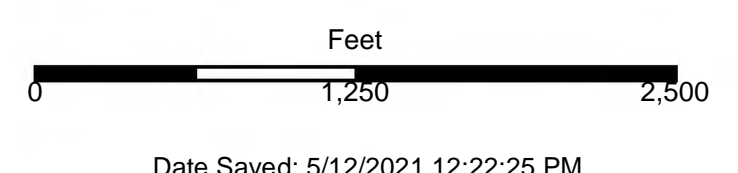
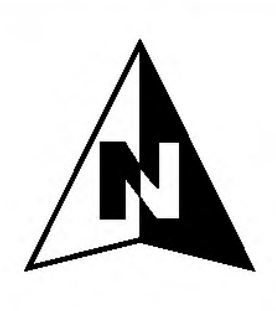
SHEET
1 of 4



SREL C3 HABITAT/ELDERBERRY



ARCF 2016



Date Saved: 5/12/2021 12:22:25 PM



Legend

Project Boundary (90%)

Elderberry

Habitat Type

CH - 0.97 Acres

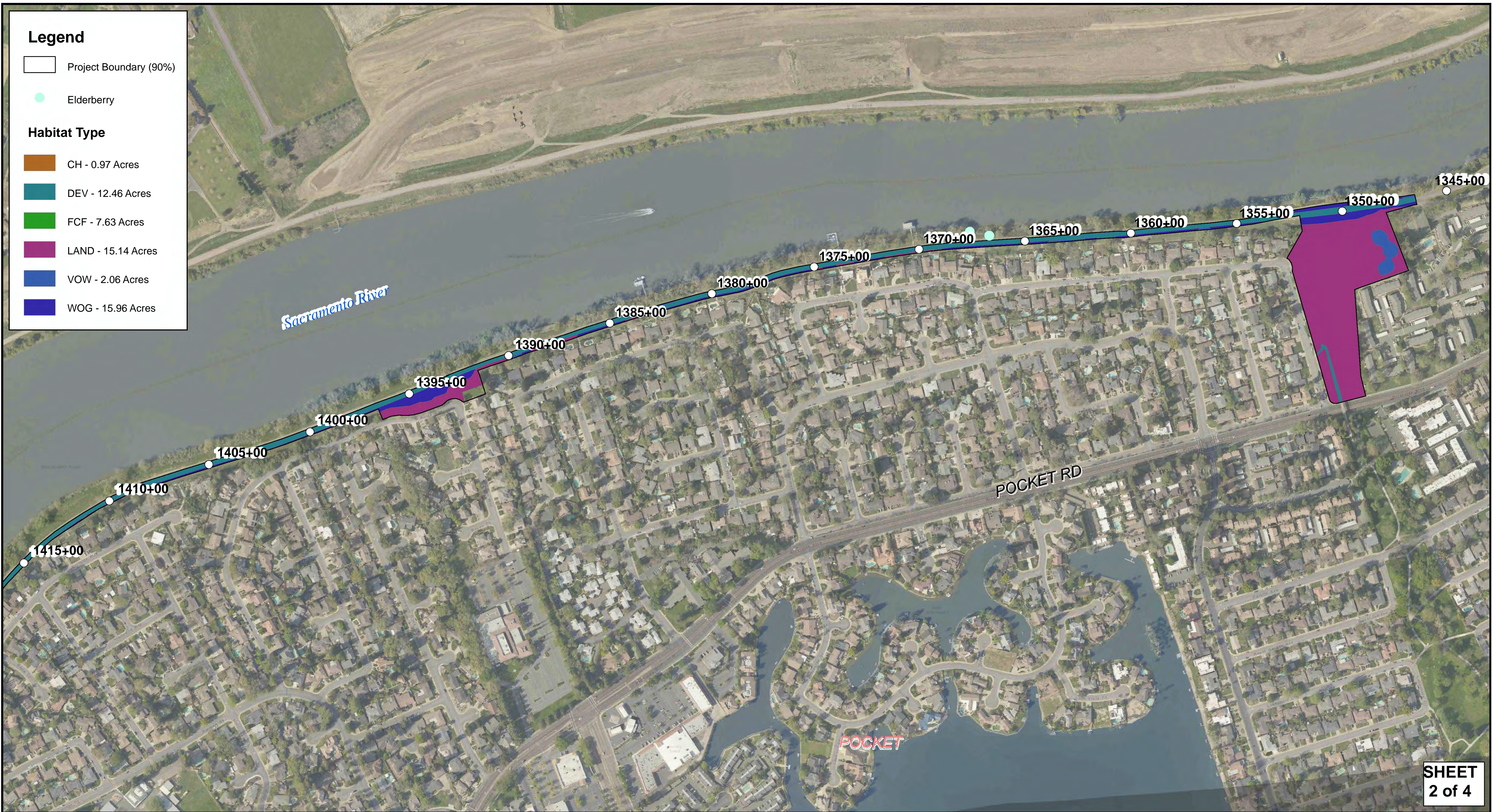
DEV - 12.46 Acres

FCF - 7.63 Acres

LAND - 15.14 Acres

VOW - 2.06 Acres

WOG - 15.96 Acres



SHEET
2 of 4



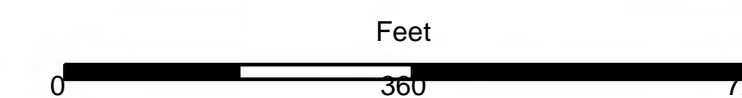
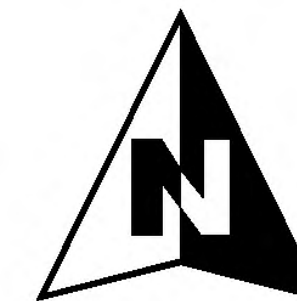
US Army Corps
of Engineers
Sacramento District



SREL C3 HABITAT/ELDERBERRY

1345+00 - 1415+00

ARCF 2016



Date Saved: 5/12/2021 12:18:47 PM





Legend


 Project Boundary (90%)

 Elderberry


Habitat Type

 CH - 0.97 Acres

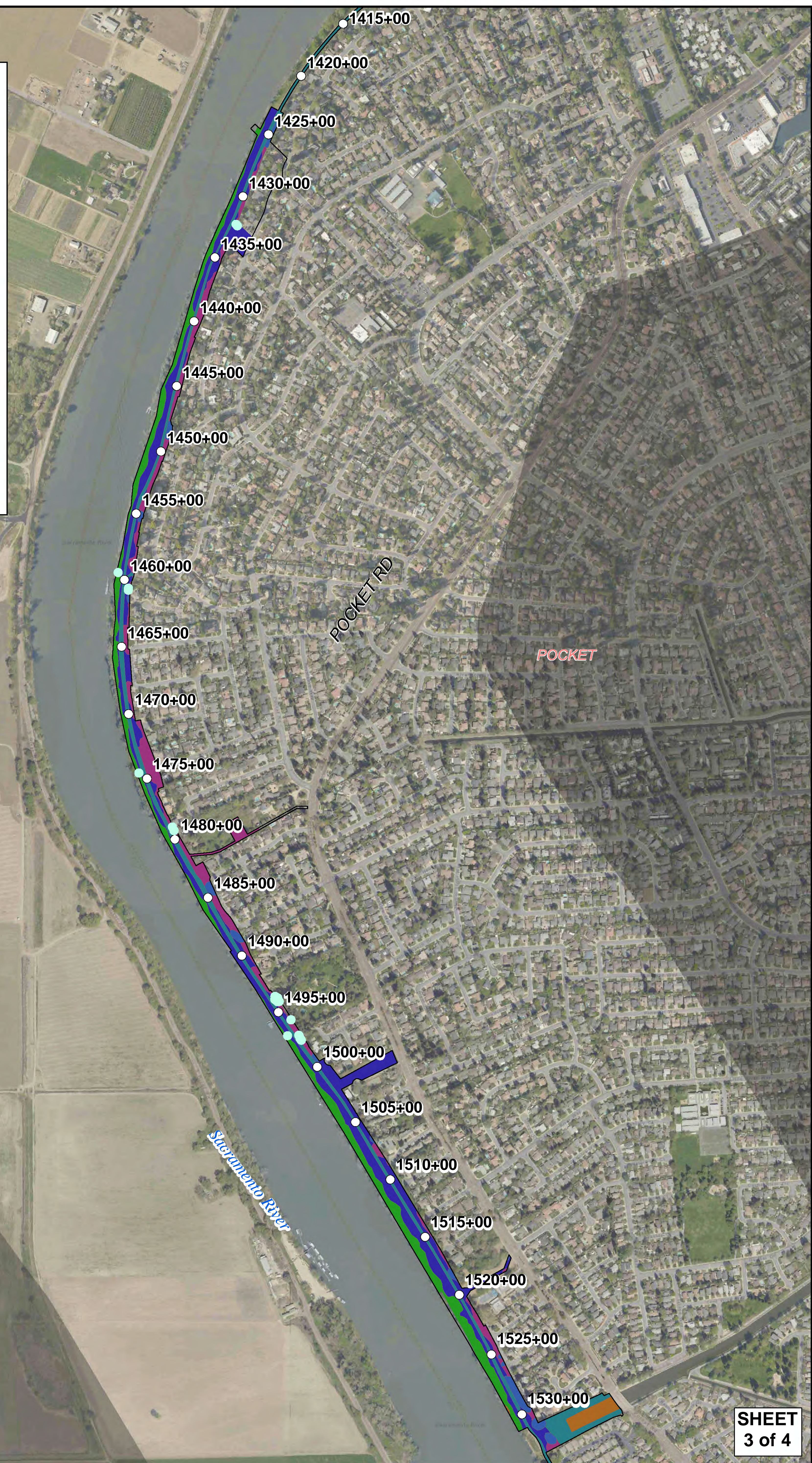
 DEV - 12.46 Acres

 FCF - 7.63 Acres

 LAND - 15.14 Acres

 VOW - 2.06 Acres

 WOG - 15.96 Acres



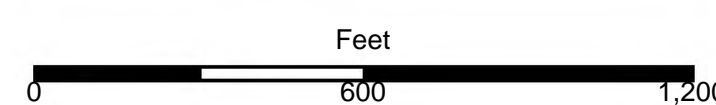
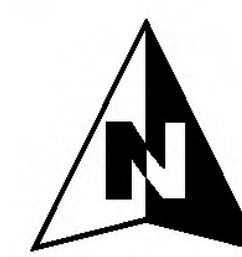
SHEET
3 of 4



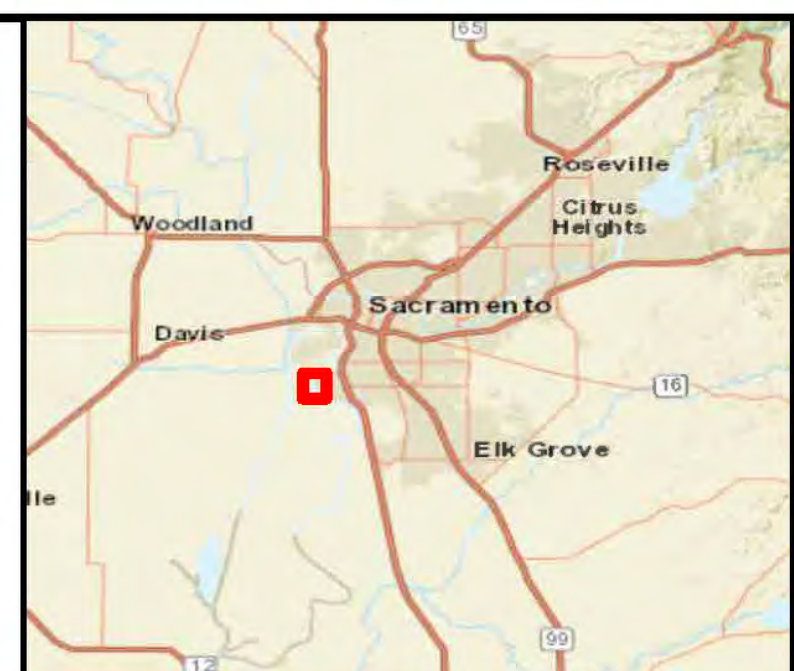
SREL C3 HABITAT/ELDERBERRY

1415+00 - 1530+00

ARCF 2016



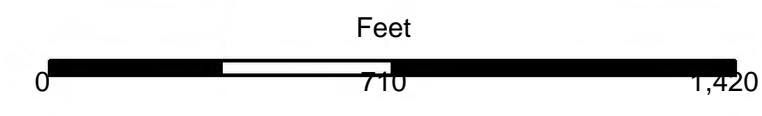
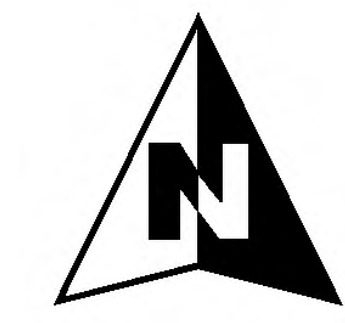
Date Saved: 5/12/2021 11:46:15 AM





SREL C3 HABITAT/ELDERBERRY

1535+00 - 1665+00
ARCF 2016



Date Saved: 5/12/2021 11:49:28 AM





Selected Elements by Scientific Name
California Department of Fish and Wildlife
California Natural Diversity Database



Query Criteria: Quad (Sacramento West (3812155) OR Clarksburg (3812145) OR Taylor Monument (3812165) OR Sacramento East (3812154) OR Rio Linda (3812164) OR Florin (3812144) OR Bruceville (3812134) OR Liberty Island (3812136) OR Davis (3812156) OR Grays Bend (3812166))

Species	Element Code	Federal Status	State Status	Global Rank	State Rank	Rare Plant Rank/CDFW SSC or FP
<i>Accipiter cooperii</i> Cooper's hawk	ABNKC12040	None	None	G5	S4	WL
<i>Agelaius tricolor</i> tricolored blackbird	ABPBXB0020	None	Threatened	G1G2	S1S2	SSC
<i>Antrozous pallidus</i> pallid bat	AMACC10010	None	None	G4	S3	SSC
<i>Archoplites interruptus</i> Sacramento perch	AFCQB07010	None	None	G2G3	S1	SSC
<i>Ardea alba</i> great egret	ABNGA04040	None	None	G5	S4	
<i>Ardea herodias</i> great blue heron	ABNGA04010	None	None	G5	S4	
<i>Astragalus tener var. ferrisiae</i> Ferris' milk-vetch	PDFAB0F8R3	None	None	G2T1	S1	1B.1
<i>Astragalus tener var. tener</i> alkali milk-vetch	PDFAB0F8R1	None	None	G2T1	S1	1B.2
<i>Athene cunicularia</i> burrowing owl	ABNSB10010	None	None	G4	S3	SSC
<i>Atriplex cordulata var. cordulata</i> heartscale	PDCHE040B0	None	None	G3T2	S2	1B.2
<i>Atriplex depressa</i> brittlescale	PDCHE042L0	None	None	G2	S2	1B.2
<i>Bombus crotchii</i> Crotch bumble bee	IIHYM24480	None	Candidate Endangered	G3G4	S1S2	
<i>Bombus occidentalis</i> western bumble bee	IIHYM24250	None	Candidate Endangered	G2G3	S1	
<i>Branchinecta lynchi</i> vernal pool fairy shrimp	ICBRA03030	Threatened	None	G3	S3	
<i>Branchinecta mesovallensis</i> midvalley fairy shrimp	ICBRA03150	None	None	G2	S2S3	
<i>Brasenia schreberi</i> watershield	PDCAB01010	None	None	G5	S3	2B.3
<i>Buteo regalis</i> ferruginous hawk	ABNKC19120	None	None	G4	S3S4	WL
<i>Buteo swainsoni</i> Swainson's hawk	ABNKC19070	None	Threatened	G5	S3	



Selected Elements by Scientific Name
California Department of Fish and Wildlife
California Natural Diversity Database



Species	Element Code	Federal Status	State Status	Global Rank	State Rank	Rare Plant Rank/CDFW SSC or FP
Carex comosa bristly sedge	PMCYP032Y0	None	None	G5	S2	2B.1
Centromadia parryi ssp. parryi pappose tarplant	PDAST4R0P2	None	None	G3T2	S2	1B.2
Charadrius montanus mountain plover	ABNNB03100	None	None	G3	S2S3	SSC
Charadrius nivosus nivosus western snowy plover	ABNNB03031	Threatened	None	G3T3	S2	SSC
Chloropyron palmatum palmate-bracted bird's-beak	PDSCR0J0J0	Endangered	Endangered	G1	S1	1B.1
Cicindela hirticollis abrupta Sacramento Valley tiger beetle	IICOL02106	None	None	G5TH	SH	
Cicuta maculata var. bolanderi Bolander's water-hemlock	PDAP10M051	None	None	G5T4T5	S2?	2B.1
Coastal and Valley Freshwater Marsh Coastal and Valley Freshwater Marsh	CTT52410CA	None	None	G3	S2.1	
Coccyzus americanus occidentalis western yellow-billed cuckoo	ABNRB02022	Threatened	Endangered	G5T2T3	S1	
Cuscuta obtusiflora var. glandulosa Peruvian dodder	PDCUS01111	None	None	G5T4?	SH	2B.2
Desmocerus californicus dimorphus valley elderberry longhorn beetle	IICOL48011	Threatened	None	G3T2	S3	
Downingia pusilla dwarf downingia	PDCAM060C0	None	None	GU	S2	2B.2
Egretta thula snowy egret	ABNGA06030	None	None	G5	S4	
Elanus leucurus white-tailed kite	ABNKC06010	None	None	G5	S3S4	FP
Elderberry Savanna Elderberry Savanna	CTT63440CA	None	None	G2	S2.1	
Emys marmorata western pond turtle	ARAAD02030	None	None	G3G4	S3	SSC
Extriplex joaquinana San Joaquin spearscale	PDCHE041F3	None	None	G2	S2	1B.2
Falco columbarius merlin	ABNKD06030	None	None	G5	S3S4	WL
Fritillaria agrestis stinkbells	PMLIL0V010	None	None	G3	S3	4.2
Gonidea angulata western ridged mussel	IMBIV19010	None	None	G3	S1S2	
Gratiola heterosepala Boggs Lake hedge-hyssop	PDSCR0R060	None	Endangered	G2	S2	1B.2



Selected Elements by Scientific Name
California Department of Fish and Wildlife
California Natural Diversity Database



Species	Element Code	Federal Status	State Status	Global Rank	State Rank	Rare Plant Rank/CDFW SSC or FP
Great Valley Cottonwood Riparian Forest Great Valley Cottonwood Riparian Forest	CTT61410CA	None	None	G2	S2.1	
Great Valley Mixed Riparian Forest Great Valley Mixed Riparian Forest	CTT61420CA	None	None	G2	S2.2	
Great Valley Valley Oak Riparian Forest Great Valley Valley Oak Riparian Forest	CTT61430CA	None	None	G1	S1.1	
Hibiscus lasiocarpus var. occidentalis woolly rose-mallow	PDMAL0H0R3	None	None	G5T3	S3	1B.2
Hydrochara rickseckeri Ricksecker's water scavenger beetle	IICOL5V010	None	None	G2?	S2?	
Hypomesus transpacificus Delta smelt	AFCHB01040	Threatened	Endangered	G1	S1	
Lasionycteris noctivagans silver-haired bat	AMACC02010	None	None	G3G4	S3S4	
Lasiurus cinereus hoary bat	AMACC05030	None	None	G3G4	S4	
Lasthenia chrysantha alkali-sink goldfields	PDAST5L030	None	None	G2	S2	1B.1
Laterallus jamaicensis coturniculus California black rail	ABNME03041	None	Threatened	G3G4T1	S1	FP
Lathyrus jepsonii var. jepsonii Delta tule pea	PDFAB250D2	None	None	G5T2	S2	1B.2
Legenere limosa legenere	PDCAM0C010	None	None	G2	S2	1B.1
Lepidium latipes var. heckardii Heckard's pepper-grass	PDBRA1M0K1	None	None	G4T1	S1	1B.2
Lepidurus packardii vernal pool tadpole shrimp	ICBRA10010	Endangered	None	G4	S3S4	
Lilaeopsis masonii Mason's lilaeopsis	PDAPI19030	None	Rare	G2	S2	1B.1
Limosella australis Delta mudwort	PDSCR10030	None	None	G4G5	S2	2B.1
Linderiella occidentalis California linderiella	ICBRA06010	None	None	G2G3	S2S3	
Melospiza melodia song sparrow ("Modesto" population)	ABPBXA3010	None	None	G5	S3?	SSC
Myrmosula pacifica Antioch multilid wasp	IIHYM15010	None	None	GH	SH	
Northern Claypan Vernal Pool Northern Claypan Vernal Pool	CTT44120CA	None	None	G1	S1.1	
Northern Hardpan Vernal Pool Northern Hardpan Vernal Pool	CTT44110CA	None	None	G3	S3.1	



Selected Elements by Scientific Name
California Department of Fish and Wildlife
California Natural Diversity Database



Species	Element Code	Federal Status	State Status	Global Rank	State Rank	Rare Plant Rank/CDFW SSC or FP
<i>Nycticorax nycticorax</i> black-crowned night heron	ABNGA11010	None	None	G5	S4	
<i>Oncorhynchus mykiss irideus pop. 11</i> steelhead - Central Valley DPS	AFCHA0209K	Threatened	None	G5T2Q	S2	
<i>Oncorhynchus tshawytscha pop. 11</i> chinook salmon - Central Valley spring-run ESU	AFCHA0205L	Threatened	Threatened	G5T1T2Q	S2	
<i>Oncorhynchus tshawytscha pop. 7</i> chinook salmon - Sacramento River winter-run ESU	AFCHA0205B	Endangered	Endangered	G5T1Q	S1	
<i>Phalacrocorax auritus</i> double-crested cormorant	ABNFD01020	None	None	G5	S4	WL
<i>Plegadis chihi</i> white-faced ibis	ABNGE02020	None	None	G5	S3S4	WL
<i>Pogonichthys macrolepidotus</i> Sacramento splittail	AFCJB34020	None	None	GNR	S3	SSC
<i>Progne subis</i> purple martin	ABPAU01010	None	None	G5	S3	SSC
<i>Puccinellia simplex</i> California alkali grass	PMPOA53110	None	None	G3	S2	1B.2
<i>Riparia riparia</i> bank swallow	ABPAU08010	None	Threatened	G5	S2	
<i>Sagittaria sanfordii</i> Sanford's arrowhead	PMALI040Q0	None	None	G3	S3	1B.2
<i>Scutellaria galericulata</i> marsh skullcap	PDLAM1U0J0	None	None	G5	S2	2B.2
<i>Scutellaria lateriflora</i> side-flowering skullcap	PDLAM1U0Q0	None	None	G5	S2	2B.2
<i>Spirinchus thaleichthys</i> longfin smelt	AFCHB03010	Candidate	Threatened	G5	S1	
<i>Symphotrichum lentum</i> Suisun Marsh aster	PDASTE8470	None	None	G2	S2	1B.2
<i>Taxidea taxus</i> American badger	AMAJF04010	None	None	G5	S3	SSC
<i>Thamnophis gigas</i> giant gartersnake	ARADB36150	Threatened	Threatened	G2	S2	
<i>Trifolium hydrophilum</i> saline clover	PDFAB400R5	None	None	G2	S2	1B.2
<i>Valley Oak Woodland</i> Valley Oak Woodland	CTT71130CA	None	None	G3	S2.1	
<i>Vireo bellii pusillus</i> least Bell's vireo	ABPBW01114	Endangered	Endangered	G5T2	S2	
<i>Xanthocephalus xanthocephalus</i> yellow-headed blackbird	ABPBXB3010	None	None	G5	S3	SSC

Record Count: 81

*The database used to provide updates to the Online Inventory is under construction. [View updates and changes made since May 2019 here.](#)

Plant List

37 matches found. [Click on scientific name for details](#)

Search Criteria

Found in Quads 3812154, 3812155, 3812145, 3812165, 3812164, 3812144, 3812134, 3812135, 3812136, 3812146 3812156 and 3812166;

[Modify Search Criteria](#) [Export to Excel](#) [Modify Columns](#) [Modify Sort](#) [Display Photos](#)

Scientific Name	Common Name	Family	Lifeform	Blooming Period	Federal Listing Status	State Listing Status	CA Rare Plant Rank	Habitats	Lowest Elevation	Highest Elevation
Astragalus pauperculus	depauperate milk-vetch	Fabaceae	annual herb	Mar-Jun			4.3	<ul style="list-style-type: none"> Chaparral Cismontane woodland Valley and foothill grassland 	60 m	1215 m
Astragalus tener var. ferrisiae	Ferris' milk-vetch	Fabaceae	annual herb	Apr-May			1B.1	<ul style="list-style-type: none"> Meadows and seeps (vernally mesic) Valley and foothill grassland (subalkaline flats) 	2 m	75 m
Astragalus tener var. tener	alkali milk-vetch	Fabaceae	annual herb	Mar-Jun			1B.2	<ul style="list-style-type: none"> Playas Valley and foothill grassland (adobe clay) Vernal pools 	1 m	60 m
Atriplex cordulata var. cordulata	heartscale	Chenopodiaceae	annual herb	Apr-Oct			1B.2	<ul style="list-style-type: none"> Chenopod scrub Meadows and seeps Valley and foothill grassland (sandy) 	0 m	560 m
Atriplex depressa	brittlescale	Chenopodiaceae	annual herb	Apr-Oct			1B.2	<ul style="list-style-type: none"> Chenopod scrub Meadows and seeps Playas Valley and foothill grassland Vernal pools 	1 m	320 m
Brasenia schreberi	watershield	Cabombaceae	perennial rhizomatous herb (aquatic)	Jun-Sep			2B.3	<ul style="list-style-type: none"> Marshes and swamps (freshwater) 	30 m	2200 m
Brodiaea rosea ssp. vallicola	valley brodiaea	Themidaceae	perennial bulbiferous herb	Apr-May(Jun)			4.2	<ul style="list-style-type: none"> Valley and foothill grassland (swales) Vernal pools 	10 m	335 m
Carex comosa	bristly sedge	Cyperaceae	perennial rhizomatous herb	May-Sep			2B.1	<ul style="list-style-type: none"> Coastal prairie Marshes and swamps (lake margins) Valley and foothill grassland 	0 m	625 m
Centromadia parryi ssp. parryi	pappose tarplant	Asteraceae	annual herb	May-Nov			1B.2	<ul style="list-style-type: none"> Chaparral Coastal prairie Meadows and seeps Marshes and swamps (coastal salt) Valley and foothill grassland (vernally mesic) 	0 m	420 m
Centromadia parryi ssp. rudis	Parry's rough tarplant	Asteraceae	annual herb	May-Oct			4.2	<ul style="list-style-type: none"> Valley and foothill grassland Vernal pools 	0 m	100 m
Chloropyron palmatum	palmate-bracted bird's-beak	Orobanchaceae	annual herb (hemiparasitic)	May-Oct	FE	CE	1B.1	<ul style="list-style-type: none"> Chenopod scrub Valley and foothill grassland 	5 m	155 m
Cicuta maculata var. bolanderi	Bolander's water-hemlock	Apiaceae	perennial herb	Jul-Sep			2B.1	<ul style="list-style-type: none"> Marshes and swamps Coastal, fresh or brackish water 	0 m	200 m

Cuscuta obtusiflora var. glandulosa	Peruvian dodder	Convolvulaceae	annual vine (parasitic)	Jul-Oct		2B.2	• Marshes and swamps (freshwater)	15 m	280 m	
Downingia pusilla	dwarf downingia	Campanulaceae	annual herb	Mar-May		2B.2	• Valley and foothill grassland (mesic) • Vernal pools	1 m	445 m	
Eryngium jepsonii	Jepson's coyote thistle	Apiaceae	perennial herb	Apr-Aug		1B.2	• Valley and foothill grassland • Vernal pools	3 m	300 m	
Extriplex joaquinana	San Joaquin spearscale	Chenopodiaceae	annual herb	Apr-Oct		1B.2	• Chenopod scrub • Meadows and seeps • Playas • Valley and foothill grassland • Chaparral • Cismontane woodland	1 m	835 m	
Fritillaria agrestis	stinkbells	Liliaceae	perennial bulbiferous herb	Mar-Jun		4.2	• Pinyon and juniper woodland • Valley and foothill grassland	10 m	1555 m	
Gratiola heterosepala	Boggs Lake hedge-hyssop	Plantaginaceae	annual herb	Apr-Aug	CE	1B.2	• Marshes and swamps (lake margins) • Vernal pools	10 m	2375 m	
Hesperex caulescens	hogwallow starfish	Asteraceae	annual herb	Mar-Jun		4.2	• Valley and foothill grassland (mesic, clay) • Vernal pools (shallow)	0 m	505 m	
Hibiscus lasiocarpus var. occidentalis	woolly rose-mallow	Malvaceae	perennial rhizomatous herb (emergent)	Jun-Sep		1B.2	• Marshes and swamps (freshwater)	0 m	120 m	
Juglans hindsii	Northern California black walnut	Juglandaceae	perennial deciduous tree	Apr-May		1B.1	• Riparian forest • Riparian woodland	0 m	440 m	
Lasthenia ferrisiae	Ferris' goldfields	Asteraceae	annual herb	Feb-May		4.2	• Vernal pools (alkaline, clay)	20 m	700 m	
Lathyrus jepsonii var. jepsonii	Delta tule pea	Fabaceae	perennial herb	May-Jul(Aug-Sep)		1B.2	• Marshes and swamps (freshwater and brackish)	0 m	5 m	
Legenere limosa	legenere	Campanulaceae	annual herb	Apr-Jun		1B.1	• Vernal pools	1 m	880 m	
Lepidium latipes var. heckardii	Heckard's pepper-grass	Brassicaceae	annual herb	Mar-May		1B.2	• Valley and foothill grassland (alkaline flats)	2 m	200 m	
Lilaeopsis masonii	Mason's lilaeopsis	Apiaceae	perennial rhizomatous herb	Apr-Nov	CR	1B.1	• Marshes and swamps (brackish or freshwater) • Riparian scrub	0 m	10 m	
Myosurus minimus ssp. apus	little mousetail	Ranunculaceae	annual herb	Mar-Jun		3.1	• Valley and foothill grassland • Vernal pools (alkaline)	20 m	640 m	
Navarretia leucocephala ssp. bakeri	Baker's navarretia	Polemoniaceae	annual herb	Apr-Jul		1B.1	• Cismontane woodland • Lower montane coniferous forest • Meadows and seeps • Valley and foothill grassland • Vernal pools	5 m	1740 m	
Neostapfia colusana	Colusa grass	Poaceae	annual herb	May-Aug	FT	CE	1B.1	• Vernal pools (adobe, large)	5 m	200 m
Plagiobothrys hystriculus	bearded popcornflower	Boraginaceae	annual herb	Apr-May		1B.1	• Valley and foothill grassland (mesic) • Vernal pools margins	0 m	274 m	
Puccinellia simplex	California alkali grass	Poaceae	annual herb	Mar-May		1B.2	• Chenopod scrub • Meadows and seeps • Valley and foothill grassland • Vernal pools	2 m	930 m	
Sagittaria sanfordii	Sanford's arrowhead	Alismataceae	perennial rhizomatous herb (emergent)	May-Oct(Nov)		1B.2	• Marshes and swamps (assorted shallow freshwater)	0 m	650 m	
Scutellaria galericulata	marsh skullcap	Lamiaceae	perennial rhizomatous herb	Jun-Sep		2B.2	• Lower montane coniferous forest • Meadows and seeps (mesic) • Marshes and swamps	0 m	2100 m	
Scutellaria lateriflora	side-flowering skullcap	Lamiaceae	perennial rhizomatous herb	Jul-Sep		2B.2	• Meadows and seeps (mesic)	0 m	500 m	

Symphyotrichum lentum	Suisun Marsh aster	Asteraceae	perennial rhizomatous herb	(Apr)May-Nov				1B.2	<ul style="list-style-type: none"> • Marshes and swamps • Marshes and swamps (brackish and freshwater) 	0 m	3 m
Trifolium hydrophilum	saline clover	Fabaceae	annual herb	Apr-Jun				1B.2	<ul style="list-style-type: none"> • Marshes and swamps • Valley and foothill grassland (mesic, alkaline) • Vernal pools 	0 m	300 m
Tuctoria mucronata	Crampton's tuctoria or Solano grass	Poaceae	annual herb	Apr-Aug	FE	CE		1B.1	<ul style="list-style-type: none"> • Valley and foothill grassland (mesic) • Vernal pools 	5 m	10 m

Suggested Citation

California Native Plant Society, Rare Plant Program. 2021. Inventory of Rare and Endangered Plants of California (online edition, v8-03 0.39). Website <http://www.rareplants.cnps.org> [accessed 11 May 2021].

Search the Inventory[Simple Search](#)[Advanced Search](#)[Glossary](#)**Information**[About the Inventory](#)[About the Rare Plant Program](#)[CNPS Home Page](#)[About CNPS](#)[Join CNPS](#)**Contributors**[The Calflora Database](#)[The California Lichen Society](#)[California Natural Diversity Database](#)[The Jepson Flora Project](#)[The Consortium of California Herbaria](#)[CalPhotos](#)**Questions and Comments**rareplants@cnps.org

NMFS Database Query (5/11/2021)

Quad Name **Sacramento West**

Quad Number **38121-E5**

ESA Anadromous Fish

SONCC Coho ESU (T) -

CCC Coho ESU (E) -

CC Chinook Salmon ESU (T) -

CVSR Chinook Salmon ESU (T) - **X**

SRWR Chinook Salmon ESU (E) - **X**

NC Steelhead DPS (T) -

CCC Steelhead DPS (T) -

SCCC Steelhead DPS (T) -

SC Steelhead DPS (E) -

CCV Steelhead DPS (T) - **X**

Eulachon (T) -

sDPS Green Sturgeon (T) - **X**

ESA Anadromous Fish Critical Habitat

SONCC Coho Critical Habitat -

CCC Coho Critical Habitat -

CC Chinook Salmon Critical Habitat -

CVSR Chinook Salmon Critical Habitat - **X**

SRWR Chinook Salmon Critical Habitat - **X**

NC Steelhead Critical Habitat -

CCC Steelhead Critical Habitat -

SCCC Steelhead Critical Habitat -

SC Steelhead Critical Habitat -

CCV Steelhead Critical Habitat - **X**

Eulachon Critical Habitat -

sDPS Green Sturgeon Critical Habitat - **X**

ESA Marine Invertebrates

Range Black Abalone (E) -

Range White Abalone (E) -

ESA Marine Invertebrates Critical Habitat

Black Abalone Critical Habitat -

ESA Sea Turtles

East Pacific Green Sea Turtle (T) -

Olive Ridley Sea Turtle (T/E) -

Leatherback Sea Turtle (E) -

North Pacific Loggerhead Sea Turtle (E) -

ESA Whales

Blue Whale (E) -

Fin Whale (E) -

Humpback Whale (E) -

Southern Resident Killer Whale (E) -

North Pacific Right Whale (E) -

Sei Whale (E) -

Sperm Whale (E) -

ESA Pinnipeds

Guadalupe Fur Seal (T) -

Steller Sea Lion Critical Habitat -

Essential Fish Habitat

Coho EFH -

Chinook Salmon EFH - **X**

Groundfish EFH - **X**

Coastal Pelagics EFH -

Highly Migratory Species EFH -

MMPA Species (See list at left)

ESA and MMPA Cetaceans/Pinnipeds

**See list at left and consult the NMFS Long Beach office
562-980-4000**

MMPA Cetaceans -

MMPA Pinnipeds -

Quad Name **Clarksburg**

Quad Number **38121-D5**

ESA Anadromous Fish

SONCC Coho ESU (T) -

CCC Coho ESU (E) -

CC Chinook Salmon ESU (T) -

CVSR Chinook Salmon ESU (T) - **X**

SRWR Chinook Salmon ESU (E) - **X**

NC Steelhead DPS (T) -

CCC Steelhead DPS (T) -

SCCC Steelhead DPS (T) -

SC Steelhead DPS (E) -

CCV Steelhead DPS (T) - **X**

Eulachon (T) -

sDPS Green Sturgeon (T) - **X**

ESA Anadromous Fish Critical Habitat

SONCC Coho Critical Habitat -

CCC Coho Critical Habitat -

CC Chinook Salmon Critical Habitat -

CVSR Chinook Salmon Critical Habitat - **X**

SRWR Chinook Salmon Critical Habitat - **X**

NC Steelhead Critical Habitat -

CCC Steelhead Critical Habitat -

SCCC Steelhead Critical Habitat -

SC Steelhead Critical Habitat -

CCV Steelhead Critical Habitat - **X**

Eulachon Critical Habitat -

sDPS Green Sturgeon Critical Habitat - **X**

ESA Marine Invertebrates

Range Black Abalone (E) -

Range White Abalone (E) -

ESA Marine Invertebrates Critical Habitat

Black Abalone Critical Habitat -

ESA Sea Turtles

East Pacific Green Sea Turtle (T) -

Olive Ridley Sea Turtle (T/E) -

Leatherback Sea Turtle (E) -

North Pacific Loggerhead Sea Turtle (E) -

ESA Whales

Blue Whale (E) -

Fin Whale (E) -

Humpback Whale (E) -

Southern Resident Killer Whale (E) -

North Pacific Right Whale (E) -

Sei Whale (E) -

Sperm Whale (E) -

ESA Pinnipeds

Guadalupe Fur Seal (T) -

Steller Sea Lion Critical Habitat -

Essential Fish Habitat

Coho EFH -

Chinook Salmon EFH - **X**

Groundfish EFH - **X**

Coastal Pelagics EFH -

Highly Migratory Species EFH -

MMPA Species (See list at left)

ESA and MMPA Cetaceans/Pinnipeds

**See list at left and consult the NMFS Long Beach office
562-980-4000**

MMPA Cetaceans -

MMPA Pinnipeds -

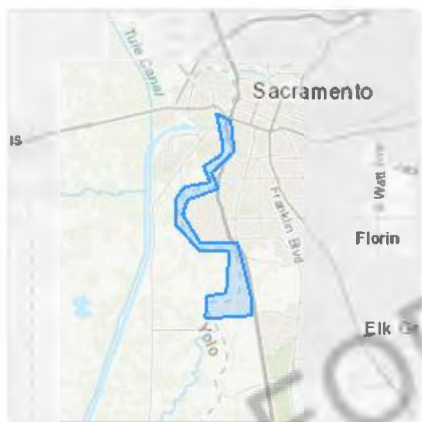
IPaC resource list

This report is an automatically generated list of species and other resources such as critical habitat (collectively referred to as *trust resources*) under the U.S. Fish and Wildlife Service's (USFWS) jurisdiction that are known or expected to be on or near the project area referenced below. The list may also include trust resources that occur outside of the project area, but that could potentially be directly or indirectly affected by activities in the project area. However, determining the likelihood and extent of effects a project may have on trust resources typically requires gathering additional site-specific (e.g., vegetation/species surveys) and project-specific (e.g., magnitude and timing of proposed activities) information.

Below is a summary of the project information you provided and contact information for the USFWS office(s) with jurisdiction in the defined project area. Please read the introduction to each section that follows (Endangered Species, Migratory Birds, USFWS Facilities, and NWI Wetlands) for additional information applicable to the trust resources addressed in that section.

Location

Sacramento and Yolo counties, California



Local offices

Sacramento Fish And Wildlife Office

☎ (916) 414-6600

📠 (916) 414-6713

Federal Building
2800 Cottage Way, Room W-2605
Sacramento, CA 95825-1846

San Francisco Bay-Delta Fish And Wildlife

☎ (916) 930-5603

📠 (916) 930-5654

650 Capitol Mall
Suite 8-300
Sacramento, CA 95814

[http://kim_squires@fws.gov](mailto:kim_squires@fws.gov)

Endangered species

This resource list is for informational purposes only and does not constitute an analysis of project level impacts.

The primary information used to generate this list is the known or expected range of each species. Additional areas of influence (AOI) for species are also considered. An AOI includes areas outside of the species range if the species could be indirectly affected by activities in that area (e.g., placing a dam upstream of a fish population even if that fish does not occur at the dam site, may indirectly impact the species by reducing or eliminating water flow downstream). Because species can move, and site conditions can change, the species on this list are not guaranteed to be found on or near the project area. To fully determine any potential effects to species, additional site-specific and project-specific information is often required.

Section 7 of the Endangered Species Act **requires** Federal agencies to "request of the Secretary information whether any species which is listed or proposed to be listed may be present in the area of such proposed action" for any project that is conducted, permitted, funded, or licensed by any Federal agency. A letter from the local office and a species list which fulfills this requirement can **only** be obtained by requesting an official species list from either the Regulatory Review section in IPaC (see directions below) or from the local field office directly.

For project evaluations that require USFWS concurrence/review, please return to the IPaC website and request an official species list by doing the following:

1. Draw the project location and click CONTINUE.
2. Click DEFINE PROJECT.
3. Log in (if directed to do so).
4. Provide a name and description for your project.
5. Click REQUEST SPECIES LIST.

Listed species¹ and their critical habitats are managed by the [Ecological Services Program](#) of the U.S. Fish and Wildlife Service (USFWS) and the fisheries division of the National Oceanic and Atmospheric Administration (NOAA Fisheries²).

Species and critical habitats under the sole responsibility of NOAA Fisheries are **not** shown on this list. Please contact [NOAA Fisheries](#) for [species under their jurisdiction](#).

1. Species listed under the [Endangered Species Act](#) are threatened or endangered; IPaC also shows species that are candidates, or proposed, for listing. See the [listing status page](#) for more information. IPaC only shows species that are regulated by USFWS (see FAQ).
2. [NOAA Fisheries](#), also known as the National Marine Fisheries Service (NMFS), is an office of the National Oceanic and Atmospheric Administration within the Department of Commerce.

The following species are potentially affected by activities in this location:

Birds

NAME	STATUS
Least Bell's Vireo <i>Vireo bellii pusillus</i> Wherever found There is final critical habitat for this species. The location of the critical habitat is not available. https://ecos.fws.gov/ecp/species/5945	Endangered
Yellow-billed Cuckoo <i>Coccyzus americanus</i> There is final critical habitat for this species. The location of the critical habitat is not available. https://ecos.fws.gov/ecp/species/3911	Threatened

Reptiles

NAME	STATUS
Giant Garter Snake <i>Thamnophis gigas</i> Wherever found No critical habitat has been designated for this species. https://ecos.fws.gov/ecp/species/4482	Threatened

Amphibians

NAME	STATUS
California Red-legged Frog <i>Rana draytonii</i> Wherever found There is final critical habitat for this species. The location of the critical habitat is not available. https://ecos.fws.gov/ecp/species/2891	Threatened
California Tiger Salamander <i>Ambystoma californiense</i> There is final critical habitat for this species. The location of the critical habitat is not available. https://ecos.fws.gov/ecp/species/2076	Threatened

Fishes

NAME	STATUS
Delta Smelt <i>Hypomesus transpacificus</i> Wherever found There is final critical habitat for this species. Your location overlaps the critical habitat. https://ecos.fws.gov/ecp/species/321	Threatened

Insects

NAME	STATUS
Valley Elderberry Longhorn Beetle <i>Desmocerus californicus dimorphus</i> Wherever found There is final critical habitat for this species. The location of the critical habitat is not available. https://ecos.fws.gov/ecp/species/7850	Threatened

Crustaceans

NAME	STATUS
Conservancy Fairy Shrimp <i>Branchinecta conservatio</i> Wherever found There is final critical habitat for this species. The location of the critical habitat is not available. https://ecos.fws.gov/ecp/species/8246	Endangered
Vernal Pool Fairy Shrimp <i>Branchinecta lynchi</i> Wherever found There is final critical habitat for this species. The location of the critical habitat is not available. https://ecos.fws.gov/ecp/species/498	Threatened

Vernal Pool Tadpole Shrimp *Lepidurus packardii*

Endangered

Wherever found

There is **final** critical habitat for this species. The location of the critical habitat is not available.

<https://ecos.fws.gov/ecp/species/2246>

Critical habitats

Potential effects to critical habitat(s) in this location must be analyzed along with the endangered species themselves.

This location overlaps the critical habitat for the following species:

NAME	TYPE
Delta Smelt <i>Hypomesus transpacificus</i> https://ecos.fws.gov/ecp/species/321#crithab	Final

Migratory birds

Certain birds are protected under the Migratory Bird Treaty Act¹ and the Bald and Golden Eagle Protection Act².

Any person or organization who plans or conducts activities that may result in impacts to migratory birds, eagles, and their habitats should follow appropriate regulations and consider implementing appropriate conservation measures, as described [below](#).

1. The [Migratory Birds Treaty Act](#) of 1918.
2. The [Bald and Golden Eagle Protection Act](#) of 1940.

Additional information can be found using the following links:

- Birds of Conservation Concern <http://www.fws.gov/birds/management/managed-species/birds-of-conservation-concern.php>
- Measures for avoiding and minimizing impacts to birds <http://www.fws.gov/birds/management/project-assessment-tools-and-guidance/conservation-measures.php>
- Nationwide conservation measures for birds <http://www.fws.gov/migratorybirds/pdf/management/nationwidestandardconservationmeasures.pdf>

The birds listed below are birds of particular concern either because they occur on the [USFWS Birds of Conservation Concern](#) (BCC) list or warrant special attention in your project location. To learn more about the levels of concern for birds on your list and how this list is generated, see the FAQ [below](#). This is not a list of every bird you may find in this location, nor a guarantee that every bird on this list will be found in your project area. To see exact locations of where birders and the general public have sighted birds in and around your project area, visit the [E-bird data mapping tool](#) (Tip: enter your location, desired date range and a species on your list). For projects that occur off the Atlantic Coast, additional maps and models detailing the relative occurrence and abundance of bird species on your list are available. Links to additional information about Atlantic Coast birds, and other important information about your migratory bird list, including how to properly interpret and use your migratory bird report, can be found [below](#).

For guidance on when to schedule activities or implement avoidance and minimization measures to reduce impacts to migratory birds on your list, click on the PROBABILITY OF PRESENCE SUMMARY at the top of your list to see when these birds are most likely to be present and breeding in your project area.

NAME

BREEDING SEASON (IF A BREEDING SEASON IS INDICATED FOR A BIRD ON YOUR LIST, THE BIRD MAY BREED IN

YOUR PROJECT AREA SOMETIME WITHIN THE TIMEFRAME SPECIFIED, WHICH IS A VERY LIBERAL ESTIMATE OF THE DATES INSIDE WHICH THE BIRD BREEDS ACROSS ITS ENTIRE RANGE. "BREEDS ELSEWHERE" INDICATES THAT THE BIRD DOES NOT LIKELY BREED IN YOUR PROJECT AREA.)

<p>Bald Eagle <i>Haliaeetus leucocephalus</i> This is not a Bird of Conservation Concern (BCC) in this area, but warrants attention because of the Eagle Act or for potential susceptibilities in offshore areas from certain types of development or activities. https://ecos.fws.gov/ecp/species/1626</p>	Breeds Jan 1 to Aug 31
<p>Black-chinned Sparrow <i>Spizella atrogularis</i> This is a Bird of Conservation Concern (BCC) throughout its range in the continental USA and Alaska. https://ecos.fws.gov/ecp/species/9447</p>	Breeds Apr 15 to Jul 31
<p>Burrowing Owl <i>Athene cucularia</i> This is a Bird of Conservation Concern (BCC) only in particular Bird Conservation Regions (BCRs) in the continental USA https://ecos.fws.gov/ecp/species/9737</p>	Breeds Mar 15 to Aug 31
<p>California Thrasher <i>Toxostoma redivivum</i> This is a Bird of Conservation Concern (BCC) throughout its range in the continental USA and Alaska.</p>	Breeds Jan 1 to Jul 31
<p>Clark's Grebe <i>Aechmophorus clarkii</i> This is a Bird of Conservation Concern (BCC) throughout its range in the continental USA and Alaska.</p>	Breeds Jan 1 to Dec 31
<p>Common Yellowthroat <i>Geothlypis trichas sinuosa</i> This is a Bird of Conservation Concern (BCC) only in particular Bird Conservation Regions (BCRs) in the continental USA https://ecos.fws.gov/ecp/species/2084</p>	Breeds May 20 to Jul 31
<p>Costa's Hummingbird <i>Calypte costae</i> This is a Bird of Conservation Concern (BCC) only in particular Bird Conservation Regions (BCRs) in the continental USA https://ecos.fws.gov/ecp/species/9470</p>	Breeds Jan 15 to Jun 10
<p>Golden Eagle <i>Aquila chrysaetos</i> This is not a Bird of Conservation Concern (BCC) in this area, but warrants attention because of the Eagle Act or for potential susceptibilities in offshore areas from certain types of development or activities. https://ecos.fws.gov/ecp/species/1680</p>	Breeds Jan 1 to Aug 31
<p>Lawrence's Goldfinch <i>Carduelis lawrencei</i> This is a Bird of Conservation Concern (BCC) throughout its range in the continental USA and Alaska. https://ecos.fws.gov/ecp/species/9464</p>	Breeds Mar 20 to Sep 20

<p>Lewis's Woodpecker <i>Melanerpes lewis</i> This is a Bird of Conservation Concern (BCC) throughout its range in the continental USA and Alaska. https://ecos.fws.gov/ecp/species/9408</p>	Breeds Apr 20 to Sep 30
<p>Long-billed Curlew <i>Numenius americanus</i> This is a Bird of Conservation Concern (BCC) throughout its range in the continental USA and Alaska. https://ecos.fws.gov/ecp/species/5511</p>	Breeds elsewhere
<p>Marbled Godwit <i>Limosa fedoa</i> This is a Bird of Conservation Concern (BCC) throughout its range in the continental USA and Alaska. https://ecos.fws.gov/ecp/species/9481</p>	Breeds elsewhere
<p>Nuttall's Woodpecker <i>Picoides nuttallii</i> This is a Bird of Conservation Concern (BCC) only in particular Bird Conservation Regions (BCRs) in the continental USA https://ecos.fws.gov/ecp/species/9410</p>	Breeds Apr 1 to Jul 20
<p>Oak Titmouse <i>Baeolophus inornatus</i> This is a Bird of Conservation Concern (BCC) throughout its range in the continental USA and Alaska. https://ecos.fws.gov/ecp/species/9656</p>	Breeds Mar 15 to Jul 15
<p>Rufous Hummingbird <i>selasphorus rufus</i> This is a Bird of Conservation Concern (BCC) throughout its range in the continental USA and Alaska. https://ecos.fws.gov/ecp/species/8002</p>	Breeds elsewhere
<p>Short-billed Dowitcher <i>Limnodromus griseus</i> This is a Bird of Conservation Concern (BCC) throughout its range in the continental USA and Alaska. https://ecos.fws.gov/ecp/species/9480</p>	Breeds elsewhere
<p>Song Sparrow <i>Melospiza melodia</i> This is a Bird of Conservation Concern (BCC) only in particular Bird Conservation Regions (BCRs) in the continental USA</p>	Breeds Feb 20 to Sep 5
<p>Spotted Towhee <i>Pipilo maculatus clementae</i> This is a Bird of Conservation Concern (BCC) only in particular Bird Conservation Regions (BCRs) in the continental USA https://ecos.fws.gov/ecp/species/4243</p>	Breeds Apr 15 to Jul 20
<p>Tricolored Blackbird <i>Agelaius tricolor</i> This is a Bird of Conservation Concern (BCC) throughout its range in the continental USA and Alaska. https://ecos.fws.gov/ecp/species/3910</p>	Breeds Mar 15 to Aug 10
<p>Whimbrel <i>Numenius phaeopus</i> This is a Bird of Conservation Concern (BCC) throughout its range in the continental USA and Alaska. https://ecos.fws.gov/ecp/species/9483</p>	Breeds elsewhere

Willet *Tringa semipalmata*

This is a Bird of Conservation Concern (BCC) throughout its range in the continental USA and Alaska.

Breeds elsewhere

Wrentit *Chamaea fasciata*

This is a Bird of Conservation Concern (BCC) throughout its range in the continental USA and Alaska.

Breeds Mar 15 to Aug 10

Yellow-billed Magpie *Pica nuttalli*

This is a Bird of Conservation Concern (BCC) throughout its range in the continental USA and Alaska.

Breeds Apr 1 to Jul 31

<https://ecos.fws.gov/ecp/species/9726>

Probability of Presence Summary

The graphs below provide our best understanding of when birds of concern are most likely to be present in your project area. This information can be used to tailor and schedule your project activities to avoid or minimize impacts to birds. Please make sure you read and understand the FAQ "Proper Interpretation and Use of Your Migratory Bird Report" before using or attempting to interpret this report.

Probability of Presence (■)

Each green bar represents the bird's relative probability of presence in the 10km grid cell(s) your project overlaps during a particular week of the year. (A year is represented as 12 4-week months.) A taller bar indicates a higher probability of species presence. The survey effort (see below) can be used to establish a level of confidence in the presence score. One can have higher confidence in the presence score if the corresponding survey effort is also high.

How is the probability of presence score calculated? The calculation is done in three steps:

1. The probability of presence for each week is calculated as the number of survey events in the week where the species was detected divided by the total number of survey events for that week. For example, if in week 12 there were 20 survey events and the Spotted Towhee was found in 5 of them, the probability of presence of the Spotted Towhee in week 12 is 0.25.
2. To properly present the pattern of presence across the year, the relative probability of presence is calculated. This is the probability of presence divided by the maximum probability of presence across all weeks. For example, imagine the probability of presence in week 20 for the Spotted Towhee is 0.05, and that the probability of presence at week 12 (0.25) is the maximum of any week of the year. The relative probability of presence on week 12 is $0.25/0.25 = 1$; at week 20 it is $0.05/0.25 = 0.2$.
3. The relative probability of presence calculated in the previous step undergoes a statistical conversion so that all possible values fall between 0 and 10, inclusive. This is the probability of presence score.

To see a bar's probability of presence score, simply hover your mouse cursor over the bar.

Breeding Season (■)

Yellow bars denote a very liberal estimate of the time-frame inside which the bird breeds across its entire range. If there are no yellow bars shown for a bird, it does not breed in your project area.

Survey Effort (|)

Vertical black lines superimposed on probability of presence bars indicate the number of surveys performed for that species in the 10km grid cell(s) your project area overlaps. The number of surveys is expressed as a range, for example, 33 to 64 surveys.

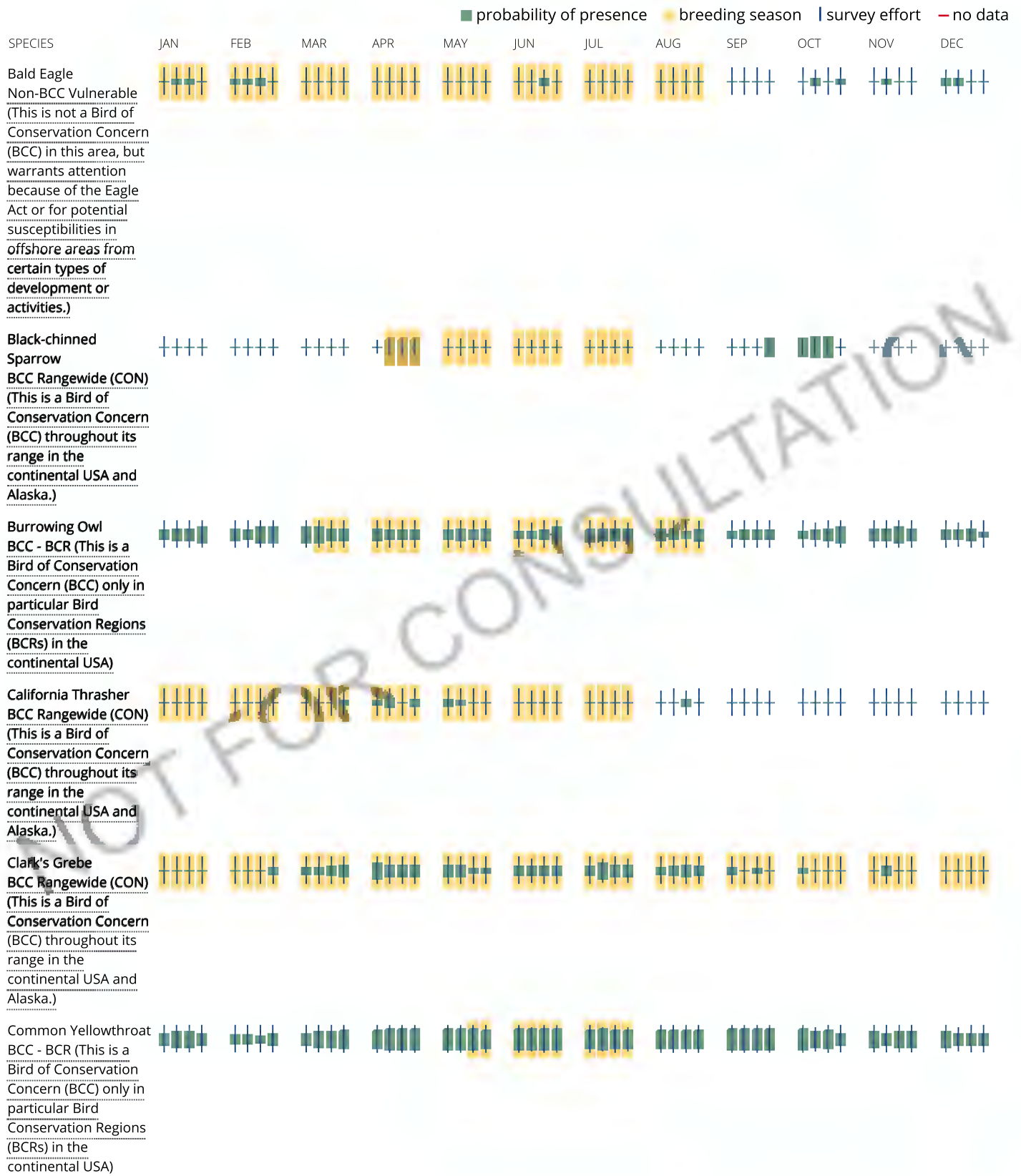
To see a bar's survey effort range, simply hover your mouse cursor over the bar.

No Data (—)

A week is marked as having no data if there were no survey events for that week.

Survey Timeframe

Surveys from only the last 10 years are used in order to ensure delivery of currently relevant information. The exception to this is areas off the Atlantic coast, where bird returns are based on all years of available data, since data in these areas is currently much more sparse.



Costa's Hummingbird BCC - BCR (This is a Bird of Conservation Concern (BCC) only in particular Bird Conservation Regions (BCRs) in the continental USA)	
Golden Eagle Non-BCC Vulnerable (This is not a Bird of Conservation Concern (BCC) in this area, but warrants attention because of the Eagle Act or for potential susceptibilities in offshore areas from certain types of development or activities.)	
Lawrence's Goldfinch BCC Rangwide (CON) (This is a Bird of Conservation Concern (BCC) throughout its range in the continental USA and Alaska.)	
Lewis's Woodpecker BCC Rangwide (CON) (This is a Bird of Conservation Concern (BCC) throughout its range in the continental USA and Alaska.)	
Long-billed Curlew BCC Rangwide (CON) (This is a Bird of Conservation Concern (BCC) throughout its range in the continental USA and Alaska.)	
Marbled Godwit BCC Rangwide (CON) (This is a Bird of Conservation Concern (BCC) throughout its range in the continental USA and Alaska.)	
SPECIES	JAN FEB MAR APR MAY JUN JUL AUG SEP OCT NOV DEC
Nuttall's Woodpecker BCC - BCR (This is a Bird of Conservation Concern (BCC) only in particular Bird Conservation Regions (BCRs) in the continental USA)	

<p>Oak Titmouse BCC Rangewide (CON) (This is a Bird of Conservation Concern (BCC) throughout its range in the continental USA and Alaska.)</p>												
<p>Rufous Hummingbird BCC Rangewide (CON) (This is a Bird of Conservation Concern (BCC) throughout its range in the continental USA and Alaska.)</p>												
<p>Short-billed Dowitcher BCC Rangewide (CON) (This is a Bird of Conservation Concern (BCC) throughout its range in the continental USA and Alaska.)</p>												
<p>Song Sparrow BCC - BCR (This is a Bird of Conservation Concern (BCC) only in particular Bird Conservation Regions (BCRs) in the continental USA)</p>												
<p>Spotted Towhee BCC - BCR (This is a Bird of Conservation Concern (BCC) only in particular Bird Conservation Regions (BCRs) in the continental USA)</p>												
<p>Tricolored Blackbird BCC Rangewide (CON) (This is a Bird of Conservation Concern (BCC) throughout its range in the continental USA and Alaska.)</p>												
<p>Whimbrel BCC Rangewide (CON) (This is a Bird of Conservation Concern (BCC) throughout its range in the continental USA and Alaska.)</p>												
<p>Willet BCC Rangewide (CON) (This is a Bird of Conservation Concern (BCC) throughout its range in the continental USA and Alaska.)</p>												



Tell me more about conservation measures I can implement to avoid or minimize impacts to migratory birds.

[Nationwide Conservation Measures](#) describes measures that can help avoid and minimize impacts to all birds at any location year round. Implementation of these measures is particularly important when birds are most likely to occur in the project area. When birds may be breeding in the area, identifying the locations of any active nests and avoiding their destruction is a very helpful impact minimization measure. To see when birds are most likely to occur and be breeding in your project area, view the Probability of Presence Summary. [Additional measures](#) or [permits](#) may be advisable depending on the type of activity you are conducting and the type of infrastructure or bird species present on your project site.

What does IPaC use to generate the migratory birds potentially occurring in my specified location?

The Migratory Bird Resource List is comprised of USFWS [Birds of Conservation Concern \(BCC\)](#) and other species that may warrant special attention in your project location.

The migratory bird list generated for your project is derived from data provided by the [Avian Knowledge Network \(AKN\)](#). The AKN data is based on a growing collection of [survey, banding, and citizen science datasets](#) and is queried and filtered to return a list of those birds reported as occurring in the 10km grid cell(s) which your project intersects, and that have been identified as warranting special attention because they are a BCC species in that area, an eagle ([Eagle Act](#) requirements may apply), or a species that has a particular vulnerability to offshore activities or development.

Again, the Migratory Bird Resource list includes only a subset of birds that may occur in your project area. It is not representative of all birds that may occur in your project area. To get a list of all birds potentially present in your project area, please visit the [AKN Phenology Tool](#).

What does IPaC use to generate the probability of presence graphs for the migratory birds potentially occurring in my specified location?

The probability of presence graphs associated with your migratory bird list are based on data provided by the [Avian Knowledge Network \(AKN\)](#). This data is derived from a growing collection of [survey, banding, and citizen science datasets](#).

Probability of presence data is continuously being updated as new and better information becomes available. To learn more about how the probability of presence graphs are produced and how to interpret them, go the Probability of Presence Summary and then click on the "Tell me about these graphs" link.

How do I know if a bird is breeding, wintering, migrating or present year-round in my project area?

To see what part of a particular bird's range your project area falls within (i.e. breeding, wintering, migrating or year-round), you may refer to the following resources: [The Cornell Lab of Ornithology All About Birds Bird Guide](#), or (if you are unsuccessful in locating the bird of interest there), the [Cornell Lab of Ornithology Neotropical Birds guide](#). If a bird on your migratory bird species list has a breeding season associated with it, if that bird does occur in your project area, there may be nests present at some point within the timeframe specified. If "Breeds elsewhere" is indicated, then the bird likely does not breed in your project area.

What are the levels of concern for migratory birds?

Migratory birds delivered through IPaC fall into the following distinct categories of concern:

1. "BCC Rangewide" birds are [Birds of Conservation Concern \(BCC\)](#) that are of concern throughout their range anywhere within the USA (including Hawaii, the Pacific Islands, Puerto Rico, and the Virgin Islands);
2. "BCC - BCR" birds are BCCs that are of concern only in particular Bird Conservation Regions (BCRs) in the continental USA; and

3. "Non-BCC - Vulnerable" birds are not BCC species in your project area, but appear on your list either because of the [Eagle Act](#) requirements (for eagles) or (for non-eagles) potential susceptibilities in offshore areas from certain types of development or activities (e.g. offshore energy development or longline fishing).

Although it is important to try to avoid and minimize impacts to all birds, efforts should be made, in particular, to avoid and minimize impacts to the birds on this list, especially eagles and BCC species of rangewide concern. For more information on conservation measures you can implement to help avoid and minimize migratory bird impacts and requirements for eagles, please see the FAQs for these topics.

Details about birds that are potentially affected by offshore projects

For additional details about the relative occurrence and abundance of both individual bird species and groups of bird species within your project area off the Atlantic Coast, please visit the [Northeast Ocean Data Portal](#). The Portal also offers data and information about other taxa besides birds that may be helpful to you in your project review. Alternately, you may download the bird model results files underlying the portal maps through the [NOAA NCCOS Integrative Statistical Modeling and Predictive Mapping of Marine Bird Distributions and Abundance on the Atlantic Outer Continental Shelf](#) project webpage.

Bird tracking data can also provide additional details about occurrence and habitat use throughout the year, including migration. Models relying on survey data may not include this information. For additional information on marine bird tracking data, see the [Diving Bird Study](#) and the [nanotag studies](#) or contact [Caleb Spiegel](#) or [Pam Loring](#).

What if I have eagles on my list?

If your project has the potential to disturb or kill eagles, you may need to [obtain a permit](#) to avoid violating the Eagle Act should such impacts occur.

Proper Interpretation and Use of Your Migratory Bird Report

The migratory bird list generated is not a list of all birds in your project area, only a subset of birds of priority concern. To learn more about how your list is generated, and see options for identifying what other birds may be in your project area, please see the FAQ "What does IPaC use to generate the migratory birds potentially occurring in my specified location". Please be aware this report provides the "probability of presence" of birds within the 10 km grid cell(s) that overlap your project; not your exact project footprint. On the graphs provided, please also look carefully at the survey effort (indicated by the black vertical bar) and for the existence of the "no data" indicator (a red horizontal bar). A high survey effort is the key component. If the survey effort is high, then the probability of presence score can be viewed as more dependable. In contrast, a low survey effort bar or no data bar means a lack of data and, therefore, a lack of certainty about presence of the species. This list is not perfect; it is simply a starting point for identifying what birds of concern have the potential to be in your project area, when they might be there, and if they might be breeding (which means nests might be present). The list helps you know what to look for to confirm presence, and helps guide you in knowing when to implement conservation measures to avoid or minimize potential impacts from your project activities, should presence be confirmed. To learn more about conservation measures, visit the FAQ "Tell me about conservation measures I can implement to avoid or minimize impacts to migratory birds" at the bottom of your migratory bird trust resources page.

Facilities

National Wildlife Refuge lands

Any activity proposed on lands managed by the [National Wildlife Refuge](#) system must undergo a 'Compatibility Determination' conducted by the Refuge. Please contact the individual Refuges to discuss any questions or concerns.

THERE ARE NO REFUGE LANDS AT THIS LOCATION.

Fish hatcheries

THERE ARE NO FISH HATCHERIES AT THIS LOCATION.

Wetlands in the National Wetlands Inventory

Impacts to [NWI wetlands](#) and other aquatic habitats may be subject to regulation under Section 404 of the Clean Water Act, or other State/Federal statutes.

For more information please contact the Regulatory Program of the local [U.S. Army Corps of Engineers District](#).

Please note that the NWI data being shown may be out of date. We are currently working to update our NWI data set. We recommend you verify these results with a site visit to determine the actual extent of wetlands on site.

This location overlaps the following wetlands:

FRESHWATER EMERGENT WETLAND

[PEM1C](#)
[PEM1A](#)
[PEM1Ch](#)
[PEM1F](#)
[PEM1J](#)
[PEM1Cx](#)

FRESHWATER FORESTED/SHRUB WETLAND

[PSS1C](#)
[PFO1C](#)
[PFOR](#)
[PFO1R](#)
[PSS1A](#)
[PFO1A](#)
[PSSR](#)
[PFOC](#)
[PSSC](#)
[PSS1Cx](#)
[PSS1R](#)
[PSS1Ax](#)

FRESHWATER POND

[PUBHh](#)
[PUBHx](#)
[PUBH](#)
[PUBKx](#)
[PUBFx](#)

LAKE

[L1UBH](#)

RIVERINE

[R1UBV](#)
[R2UBH](#)
[R2UBHx](#)
[R4SBCx](#)
[R5UBFx](#)
[R5UBF](#)
[R1USQ](#)

A full description for each wetland code can be found at the [National Wetlands Inventory website](#)

Data limitations

The Service's objective of mapping wetlands and deepwater habitats is to produce reconnaissance level information on the location, type and size of these resources. The maps are prepared from the analysis of high altitude imagery. Wetlands are identified based on vegetation, visible hydrology and geography. A margin of error is inherent in the use of imagery; thus, detailed on-the-ground inspection of any particular site may result in revision of the wetland boundaries or classification established through image analysis.

The accuracy of image interpretation depends on the quality of the imagery, the experience of the image analysts, the amount and quality of the collateral data and the amount of ground truth verification work conducted. Metadata should be consulted to determine the date of the source imagery used and any mapping problems.

Wetlands or other mapped features may have changed since the date of the imagery or field work. There may be occasional differences in polygon boundaries or classifications between the information depicted on the map and the actual conditions on site.

Data exclusions

Certain wetland habitats are excluded from the National mapping program because of the limitations of aerial imagery as the primary data source used to detect wetlands. These habitats include seagrasses or submerged aquatic vegetation that are found in the intertidal and subtidal zones of estuaries and nearshore coastal waters. Some deepwater reef communities (coral or tubercid worm reefs) have also been excluded from the inventory. These habitats, because of their depth, go undetected by aerial imagery.

Data precautions

Federal, state, and local regulatory agencies with jurisdiction over wetlands may define and describe wetlands in a different manner than that used in this inventory. There is no attempt, in either the design or products of this inventory, to define the limits of proprietary jurisdiction of any Federal, state, or local government or to establish the geographical scope of the regulatory programs of government agencies. Persons intending to engage in activities involving modifications within or adjacent to wetland areas should seek the advice of appropriate federal, state, or local agencies concerning specified agency regulatory programs and proprietary jurisdictions that may affect such activities.