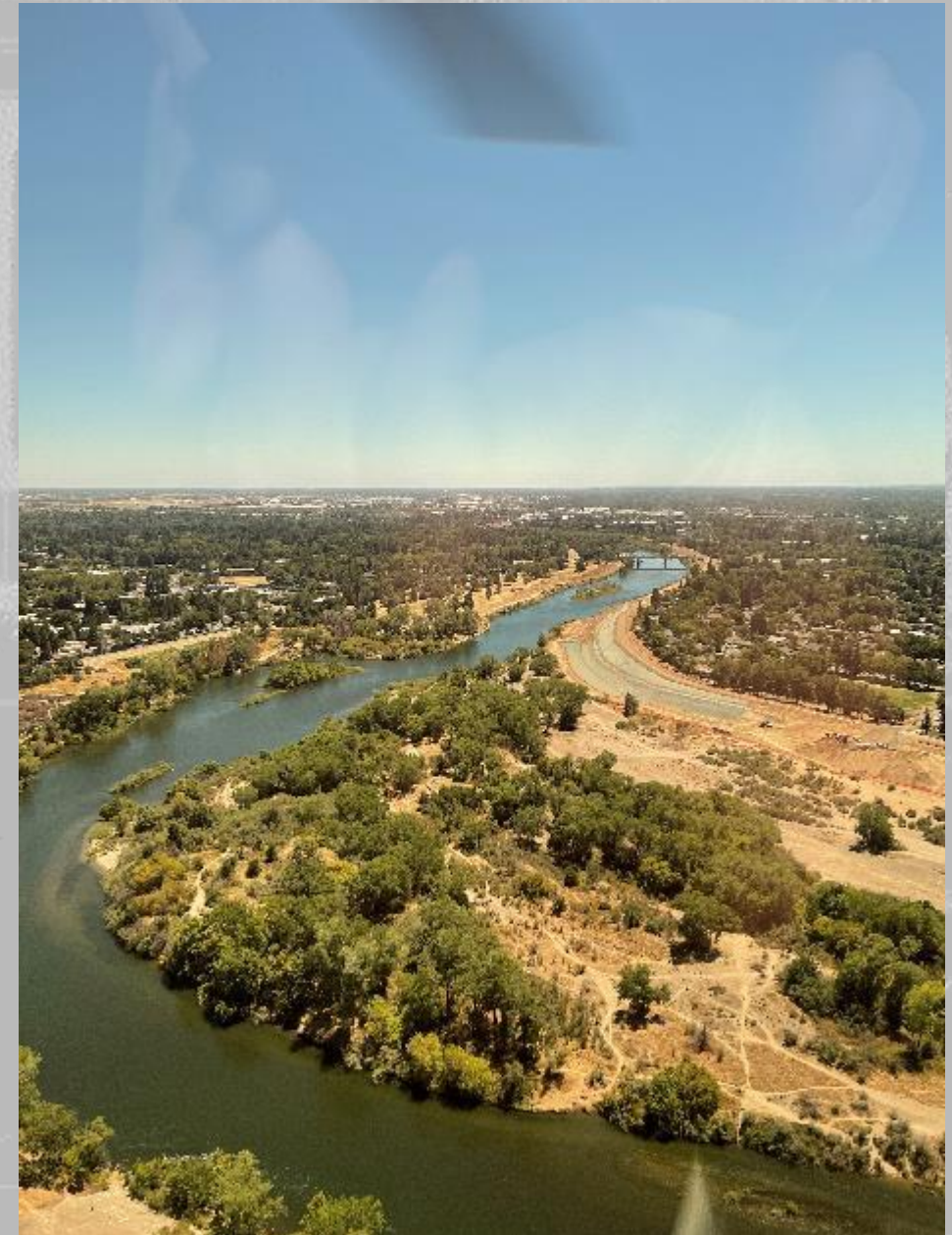


# AMERICAN RIVER COMMON FEATURES

## NEPA Scoping Meeting For Development of a Supplemental Environmental Impact Statement / Subsequent Environmental Impact Report

*2 November 2022*

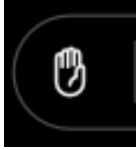
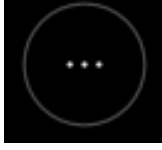
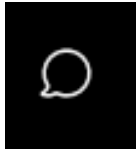



**US Army Corps  
of Engineers®**



# ON-LINE COMMUNICATION TIPS



- We will be muting everyone so if you would like to talk please first raise your hand by clicking this button:  (for those on mobile, first click  ). We will then unmute you.
- For anyone calling in press \*3 to raise your hand
- For help with audio problems use the chat button  (for those on mobile, first click  )
- If you are having general audio issues, you can also try calling in at: (844) 800-2712, Meeting ID: 1999 47 2135



# NEPA SCOPING PROCESS



Due to potential significant impacts to resources in the region, an Supplemental Environmental Impact Statement (SEIS) Subsequent Environmental Impact Report (SEIR) is being developed for this study

Scoping is an important step in the completion of the SEIS and is required under 40 CFR 1501.9

Provides an early opportunity for the public and other interested parties to express concerns and suggest alternatives to be considered in the SEIS

The Notice of Intent was published in the Federal Register on October 7, 2022 and is available at [www.sacleveeupdates.com](http://www.sacleveeupdates.com)



# HOW TO PROVIDE COMMENTS



1. Please provide comment in writing to the following addresses:

Public Affairs Office  
Attn: ARCF SEIS  
U.S. Army Corps of Engineers  
1325 J Street Room 1513  
Sacramento, CA 95814

2. Email: [ARCF\\_SEIS@usace.army.mil](mailto:ARCF_SEIS@usace.army.mil)

use “ARCF SEIS/SEIR” in the subject line

3. Comments will inform the preparation of the SEIS/SEIR but will not be responded to verbally during this meeting. Comments will only be accepted in writing via email or regular mail.



# PROJECT AUTHORITY



- WRDA 2016, Pub. L. No. 114-322 § 1322
  - Also known as the Water Infrastructure Improvements for the Nation Act (WIIN Act).
- The project was fully funded through the Bipartisan Budget Act of 2018 (Public Law 115-123).



# FLOOD RISK



*Source: U.S. Army Corps of Engineers, Sacramento District*

Post-Flood 1986 - Flow of 134,000 cfs



*Source: U.S. Army Corps of Engineers, Sacramento District*

Post-Flood 1986

Flooding from levee failure threatens over 500,000 people and 83,000 structures in the Sacramento Region



# PROJECT PARTNERS



## Federal Government



**US Army Corps  
of Engineers®**

## State Government



Central Valley  
Flood Protection  
Board



Department of  
Water  
Resources

## Local Government

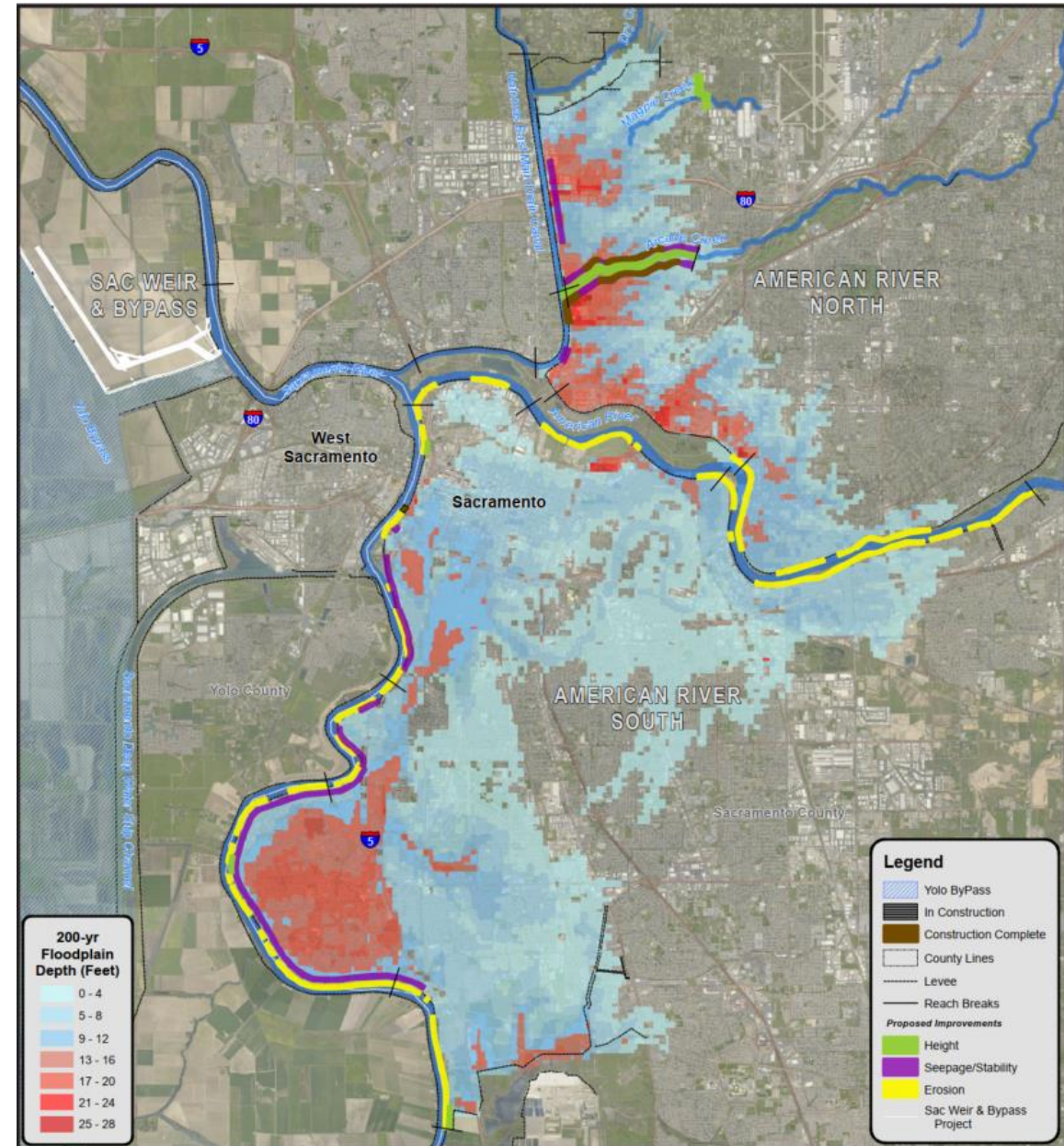






# 2016 STUDY AREA

The study area is located within the Sacramento and American River Watersheds, with the focus being on the vicinity of the confluence of these two rivers where they meet within the City of Sacramento

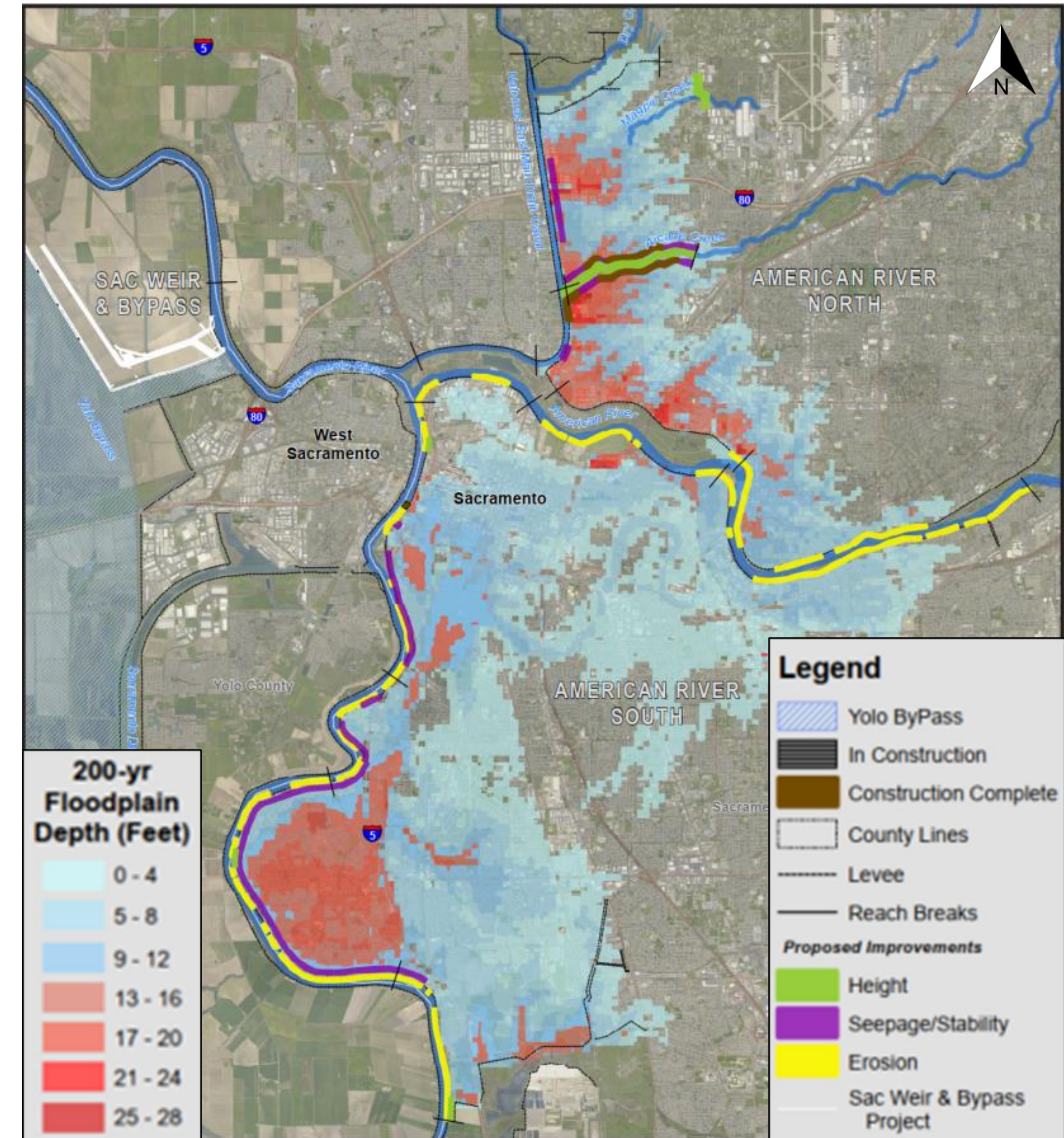




# 2016 STUDY PURPOSE

Reduce the risk of flooding to the greater Sacramento area

- Sacramento River East Levee Improvements
- American River Levee Improvements
- Sacramento Weir and Bypass Widening
- North Area Streams Levee Improvements





## NEED FOR SEIS/SEIR

- A Supplemental Environmental Impact Statement/Subsequent Environmental Impact Report (SEIS/SEIR) is needed to analyze refinements made during design that could result in potentially significant environmental effects.
- Project components requiring further consideration are:
  - American River Contract 3B and 4A
  - Sacramento River Contract 3
  - Magpie Creek
  - Mitigation Strategy
- SEIS/SEIR will focus on refinements of project designs that have evolved since the original 2016 ARCF GRR FEIS/FEIR was completed
- SEIS/SEIR Schedule: Record of Decision – Anticipated in May 2024



# NO ACTION ALTERNATIVE



**Future Without Project Condition-** Most likely condition of the resources and human environment if no additional actions are taken as a result of this study

## **Construction within the Basin**

- American River Levees
- Sacramento River Levees
- Sacramento Weir Widening

## **Increased flood risk**

- Winter Storm Events

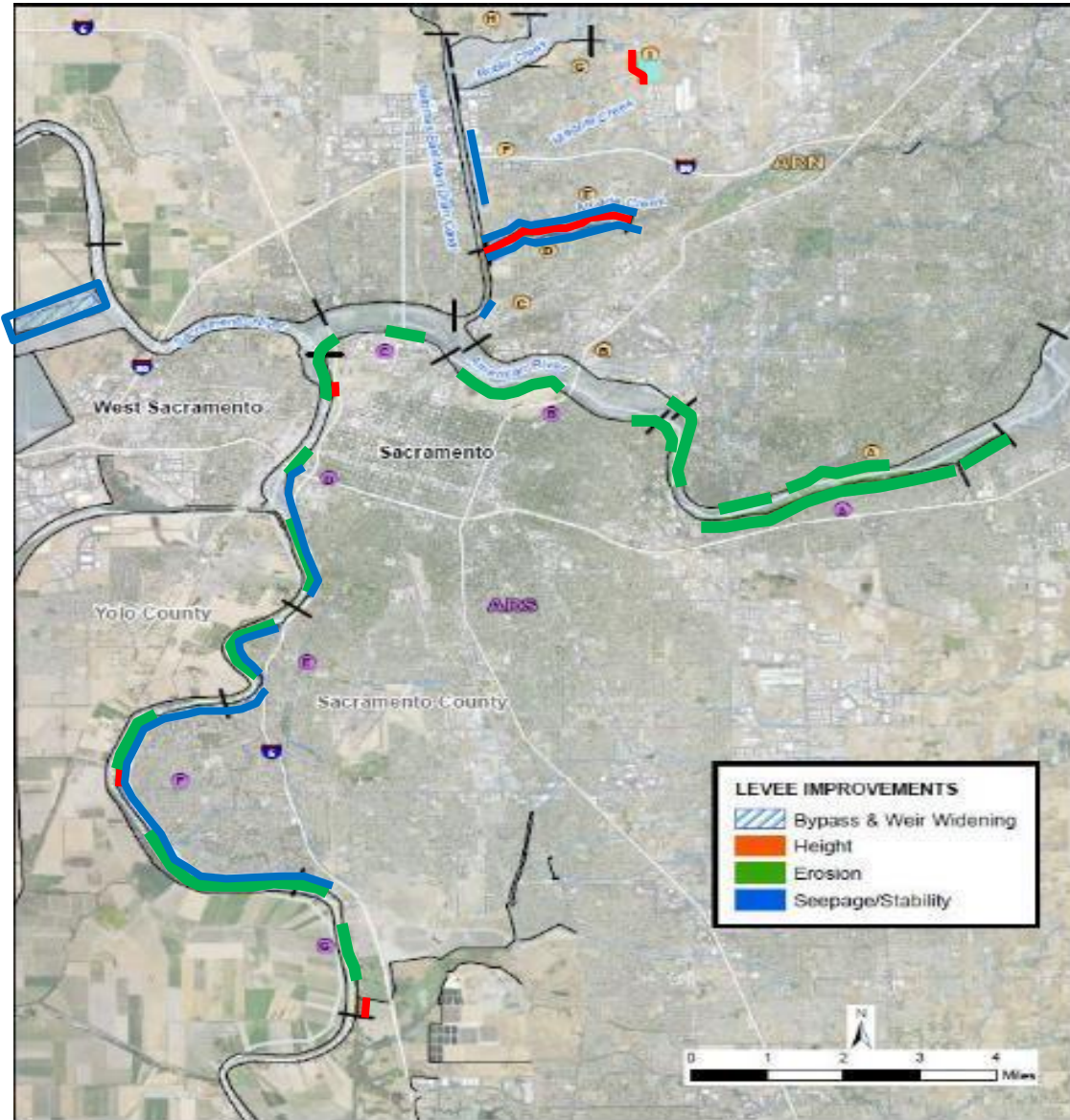
## **Increased storm damages**

- Frequency
- Intensity





# Overview of Refinements



## Key features of the Report:

- Refinements identified over the past six years require changes to the analysis in the 2016 ARCF GRR EIS (the original NEPA document)
- Plan to include SR C3, LAR C3B, LAR C4A, Magpie Creek, Mitigation Sites
- Written as Joint Document with CEQA and NEPA
- 21-month schedule to ROD



# DESIGN REFINEMENTS



## American River

- Refined erosion protection methods (launchable toe protection) to provide better onsite mitigation, fisheries habitat, and to decrease impacts to heritage oak trees.
- Refined haul routes and staging areas
- Erosion protection around State Route 160 Bridge
- Refined designs require more soil and rock material

## Sacramento River

- Refined erosion protection methods (launchable toe protection) to provide better onsite mitigation
- Identification of land side staging areas
- Construction equipment operating on the river's shoreline (previously it was assumed all work would be done by barge)
- Refined designs require more soil and rock material

## Magpie Creek

- Realignment of levee and canal at Magpie Creek
- Night work
- Full road closure at Raley Boulevard for a portion of the construction

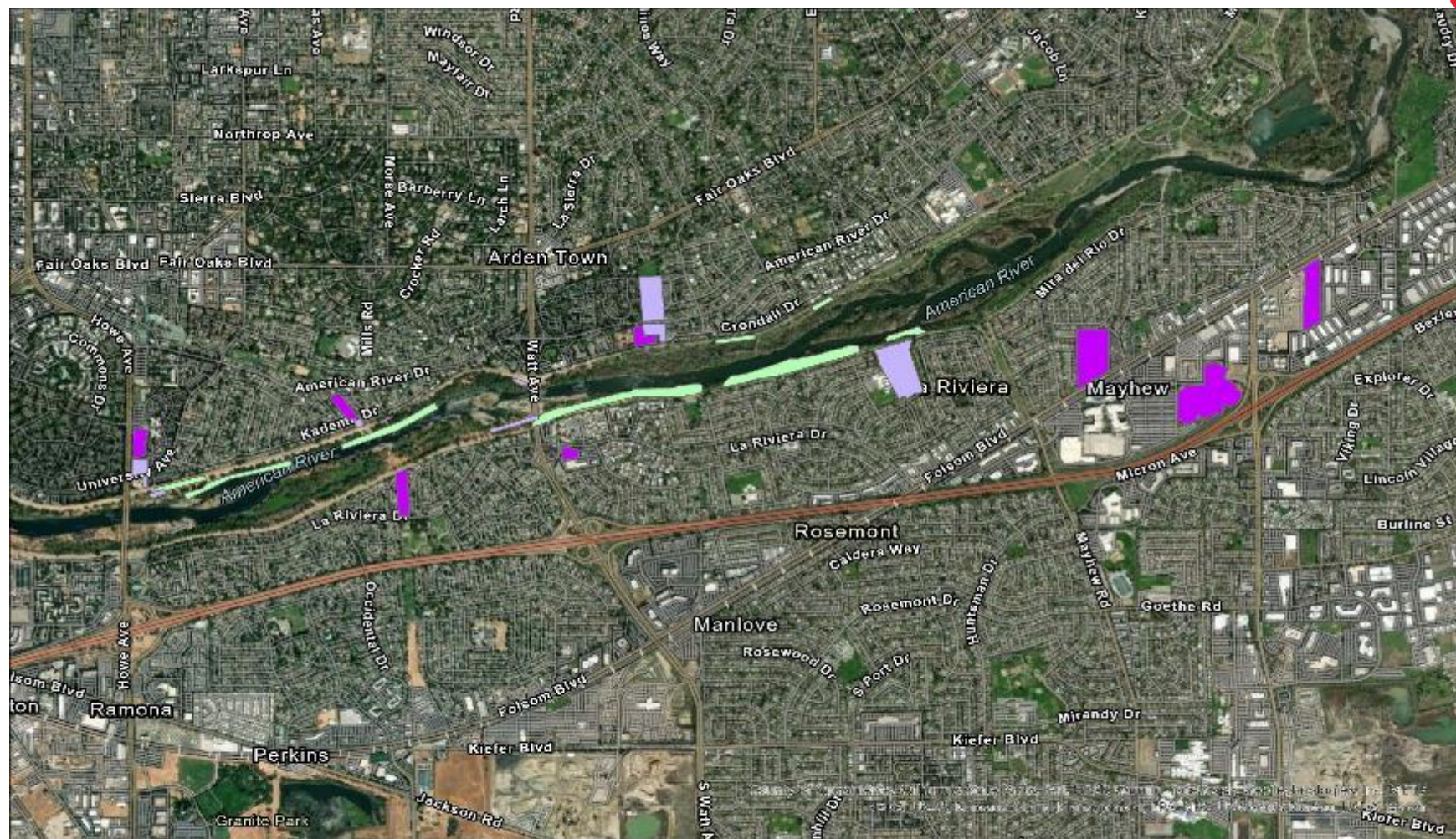




# REFINEMENTS

## Lower American River Contact 3B

14



### ARCF LAR C3B

- Erosion Protection
- Staging
- Secondary Staging

0 0.25 0.5 1 Miles







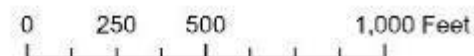
# Lower American River Contact 4A



ARCF LAR C4a

■ Erosion Protection

- Staging

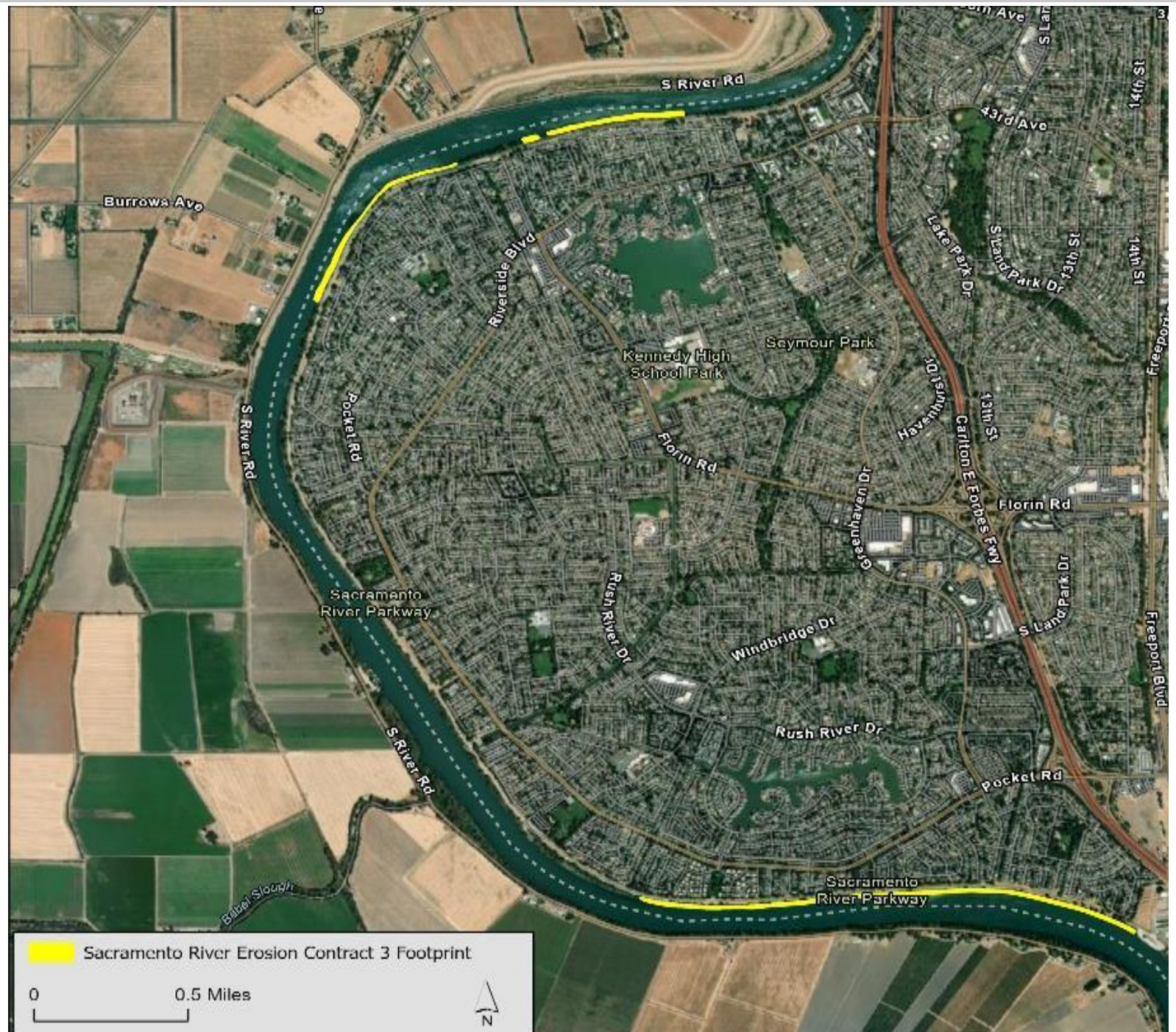






# REFINEMENTS

## Sacramento River Erosion Contract 3







# REFINEMENTS

## Magpie Creek







# REFINEMENTS - MITIGATION



Project Partners continue to seek a mitigation site that can accommodate Fisheries, Riparian, and VELB habitat.

Impacts on the Sacramento River will be mitigated as close to impacts as possible to avoid higher mitigation ratios.

Onsite mitigation is being incorporated where possible for both Sacramento River and American River.

Elderberry shrubs are being transplanted to 5 locations along the American River Parkway.



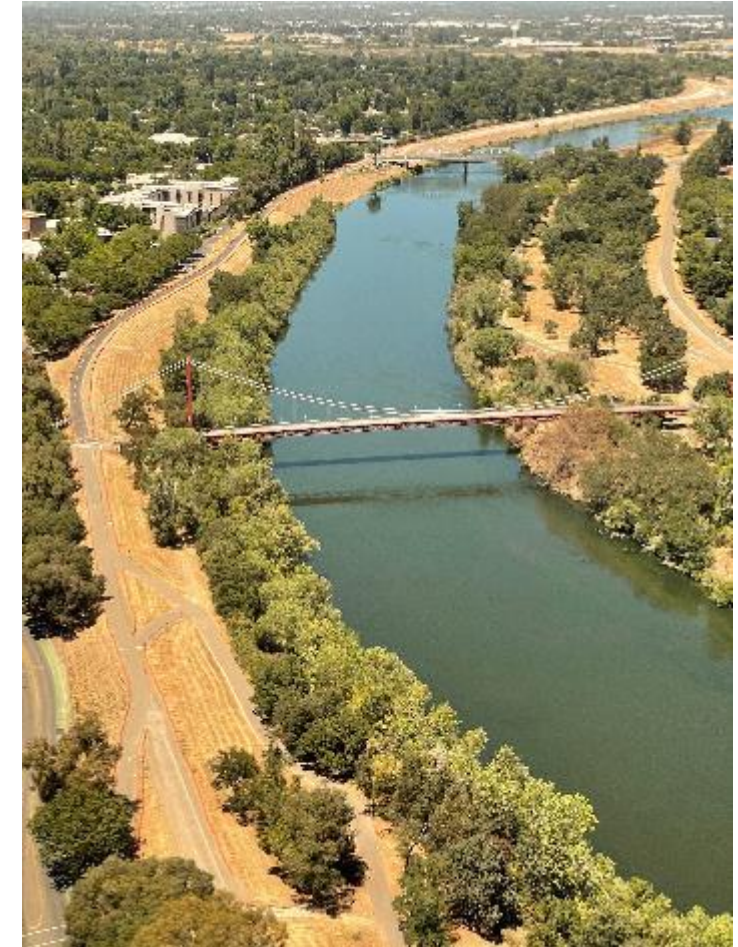
# RESOURCES ADDRESSED IN THE SEIS/SEIR

## Natural Environment

- Cultural Resources
- Fisheries
- Wildlife
- Essential Fish Habitat (EFH)
- Water Quality
- Air Quality
- Threatened and Endangered Species (T&E)

## Human Environment

- Noise / Traffic
- Recreation
- Hydrology
- Socio-Economics





# MILESTONE SCHEDULE



Milestone	Baseline
NOI Published	Complete
Scoping Public Meeting	Complete
Prepare Draft Biological Assessment	DEC 2022
Release Draft SEIS/SEIR for Public Review	AUG 2023
Public Comment Period	SEP 2023
Response to Comments Admin Final SEIS/SEIR	FEB 2024
Prepare Final SEIS/SEIR	MAR 2024
Federal Register Notification	MAR 2024
Record of Decision	MAY 2024





# SCOPING REPORT



- Scoping Report will be written that summarizes the significant issues, alternatives and concerns of the public
- Report will be used to focus the EIS study on the significant issues and to inform the public
- A copy of the report will be posted on [www.sacleveeupgrades.com](http://www.sacleveeupgrades.com)



# SCOPING QUESTIONS





QUESTION #1: What are the most important issues, resources, and impacts that we should consider in the SEIS/SEIR?

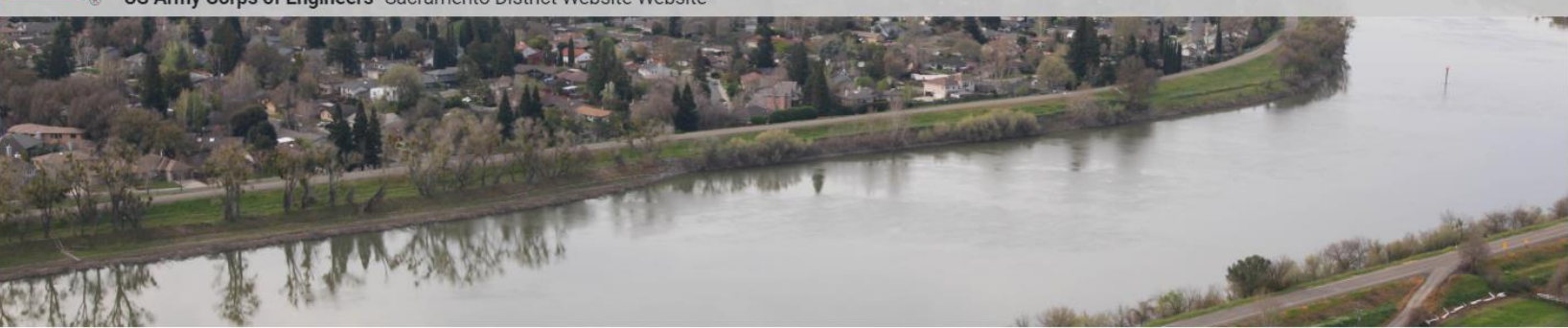
QUESTION #2: Are there any other modifications to the existing proposals that we should consider in the SEIS/SEIR?



# FOR MORE INFORMATION...

[About](#) [Business With Us](#) [Missions](#) [Locations](#) [Careers](#) [Media](#) [Library](#) [Contact](#) [Coronavirus](#)  

US Army Corps of Engineers Sacramento District Website Website




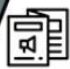
**Project Overview**

**American River Levees**

**Sacramento River Levees**

**Sacramento Weir**

*Subscribe for Construction  
& Traffic email updates* 

*Project Information Tri-fold* 

**Reducing flood risk in Sacramento**

Greater Sacramento, California, is often considered to be the most at-risk region in America for catastrophic flooding, relying on an aging system of levees, weirs and bypasses and Folsom Dam to reduce its flood risk. But that system, just like a chain, is only as strong as its weakest link. Together, the U.S. Army Corps of Engineers, California's Central Valley Flood Protection Board, California Department of Water Resources, and the Sacramento Area Flood Control Agency have made tremendous progress in reducing the flood risk, but more work remains. Through the Bipartisan Budget Act, the Corps has received full upfront funding to modernize Sacramento's aging flood infrastructure. This allows us to more efficiently implement nearly \$1.8 billion in upgrades to Sacramento's flood risk management system. The authorized work includes up to: 13 miles of seepage cutoff walls, 21 miles of bank protection, 5 miles of levee stabilization, 5 miles of levee raises and widening the Sacramento Weir and bypass.

**Current Project Activities**

Sacramento River East Levee Contract 1 Construction

[www.sacleveeupgrades.com](http://www.sacleveeupgrades.com)



# Questions

USACE encourages full public participation to promote open communication on the issues surrounding the SEIS/SEIR. Comments are due December 1, 2022:

Written comments at the end of each meeting

E-mail: [ARCF\\_SEIS@usace.army.mil](mailto:ARCF_SEIS@usace.army.mil)

Mail: Public Affairs Office

Attn: ARCF SEIS

1325 J Street Room 1513

Sacramento, CA 95814-2922

Information about the study is available online for public review at:

[www.sacleveeupgrades.com](http://www.sacleveeupgrades.com)