

AMERICAN RIVER WATERSHED COMMON FEATURES, WATER RESOURCES DEVELOPMENT ACT OF 2016, AMERICAN RIVER CONTRACT 1

Supplemental Environmental Assessment / Supplemental Environmental Impact Report

Sacramento District
US Army Corps of Engineers

15 JUNE 2020



Source: U.S. Army Corps of Engineers, Sacramento District



US Army Corps
of Engineers®



ON-LINE COMMUNICATION TIPS

If you have joined by computer and computer audio, you will only see the panelist and the presentation deck.

For audio problems help, use the Q&A chat at the bottom of the screen

Computer Use	Phone Only Use
<ul style="list-style-type: none">- You will be muted upon entry- To “raise hand”, click on three dots- Please lower hand after comment- We will un-mute you during Q&A- To write comments, click on the Q&A icon at the bottom of the screen	<ul style="list-style-type: none">- To raise your hand, use *3- We will un-mute you.



HOW TO PROVIDE COMMENTS

Connect by computer audio OR by phone, but not both

Talk:

Use WebEx “raise hand” function by clicking on the three dots (*3 on phone)

Write:

Miles Claret
Department of Water Resources
3464 El Camino Avenue Room 150
Sacramento, CA 95821

OR

Public Affairs Office
U.S. Army Corps of Engineers
1325 J Street Room 1513
Sacramento, CA 95814

Email:

PublicComment@cvflood.ca.gov

spk-pao@usace.army.mil

use “American River Contract 1” in subject line



AGENDA

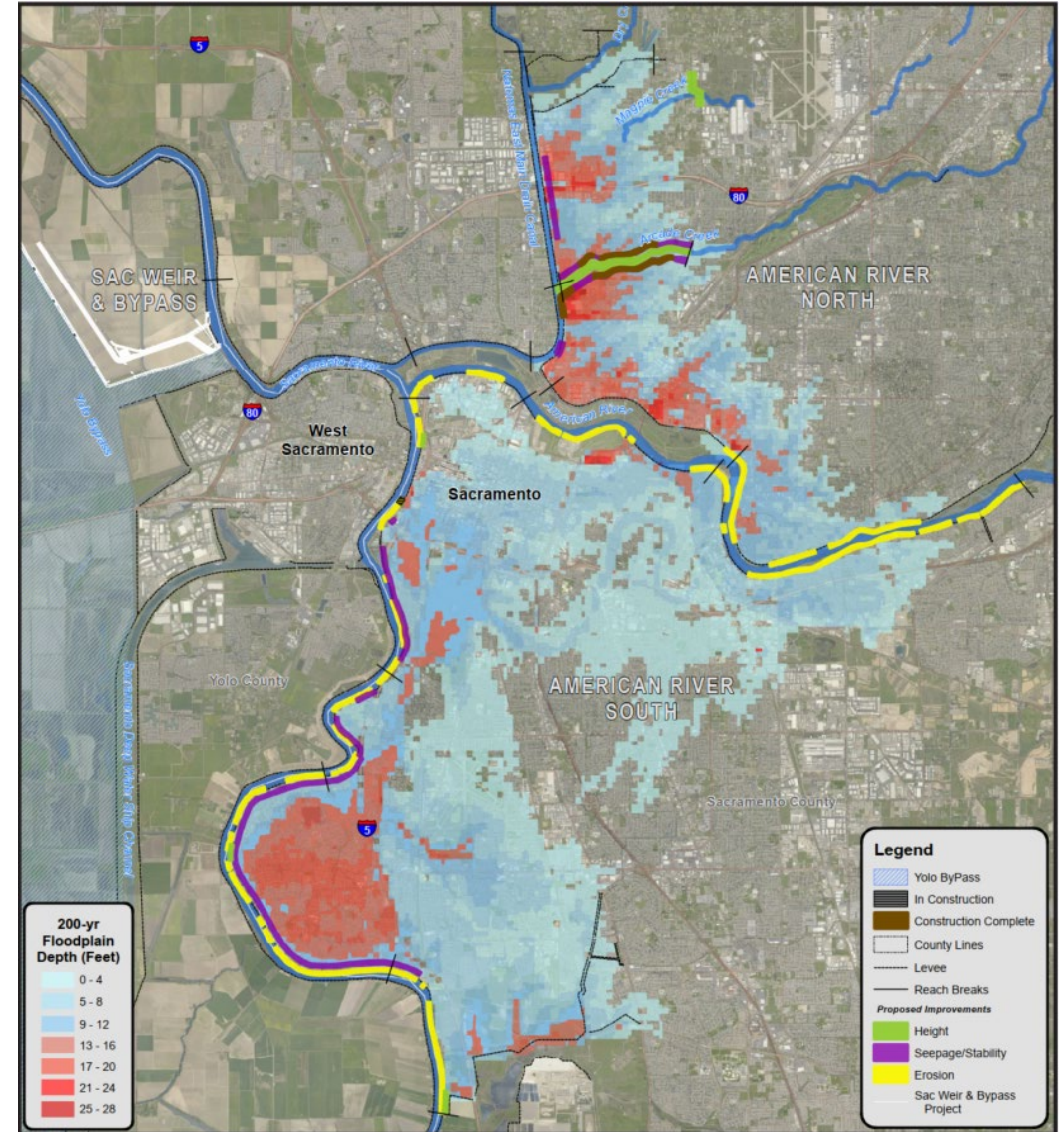
- American River Watershed Common Features 2016 Project
 - Final Environmental Impact Statement / Final Environmental Impact Report
- American River Contract 1
 - Supplemental EA / Supplemental EIR
- Opportunities for Public Input



AMERICAN RIVER WATERSHED COMMON FEATURES 2016



- Water Resources Development Act of 2016
- Emergency Supplemental Appropriations in the Bipartisan Budget Act of 2018





PROJECT PARTNERS

Federal Government



**US Army Corps
of Engineers®**

State Government



Central Valley
Flood Protection
Board



Department of
Water
Resources

Local Government





PROJECT NEED



Source: U.S. Army Corps of Engineers, Sacramento District

Post-Flood 1986 - Flow of 134,000 cfs



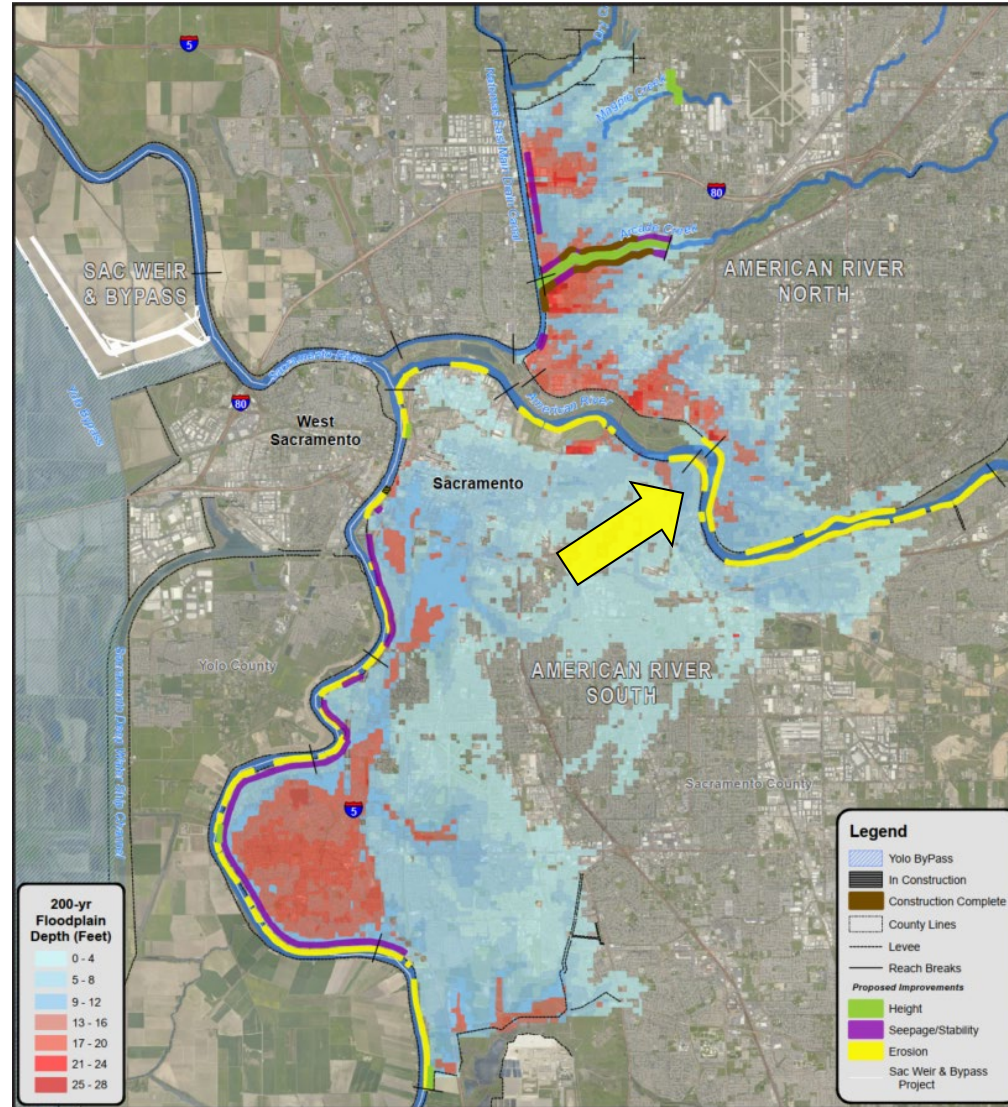
Source: U.S. Army Corps of Engineers, Sacramento District

Post-Flood 1986

Flooding from levee failure threatens the safety of over 500,000 people in the Sacramento Region

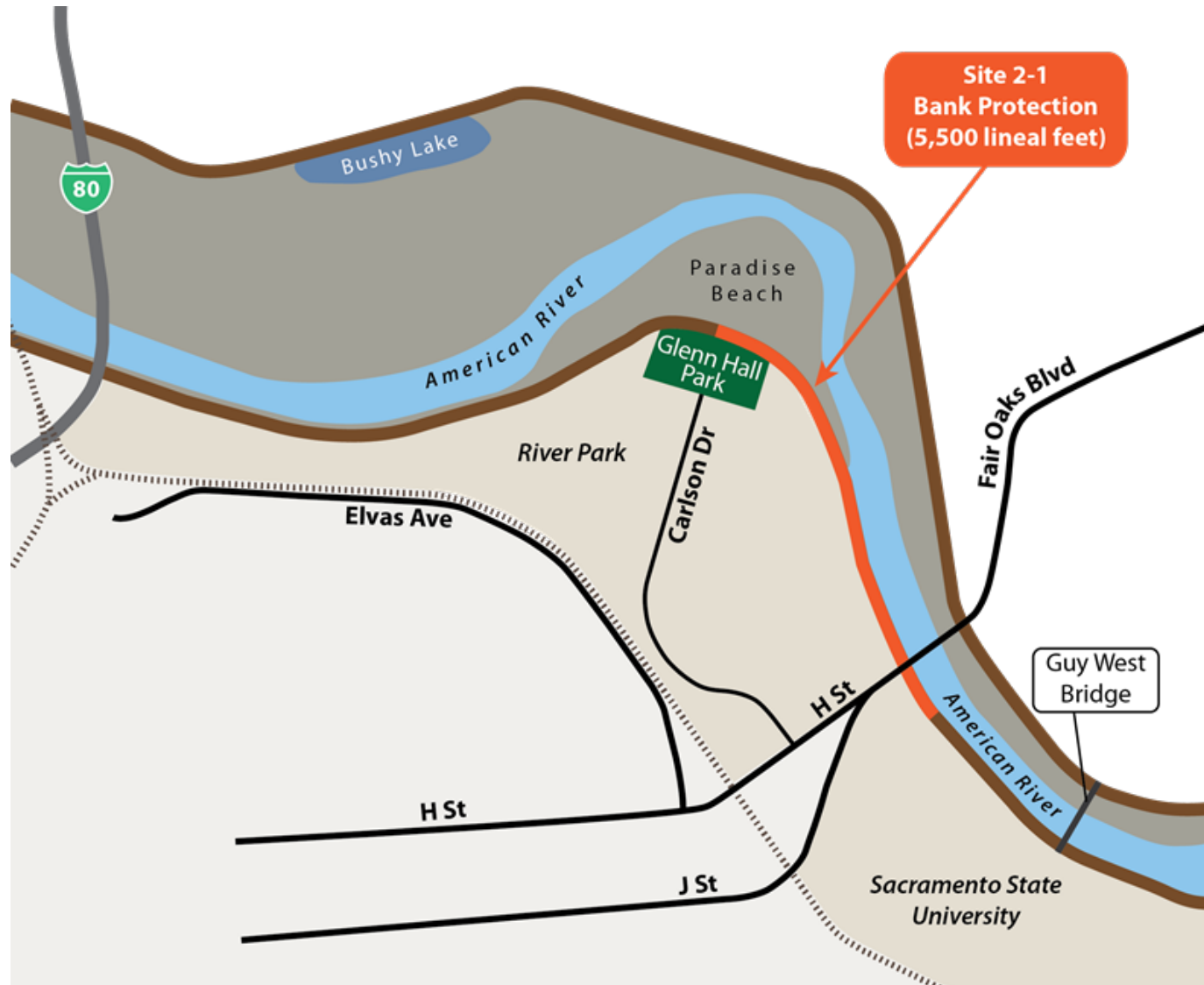


AMERICAN RIVER WATERSHED COMMON FEATURES 2016





PROJECT LOCATION





AMERICAN RIVER EROSION PROTECTION

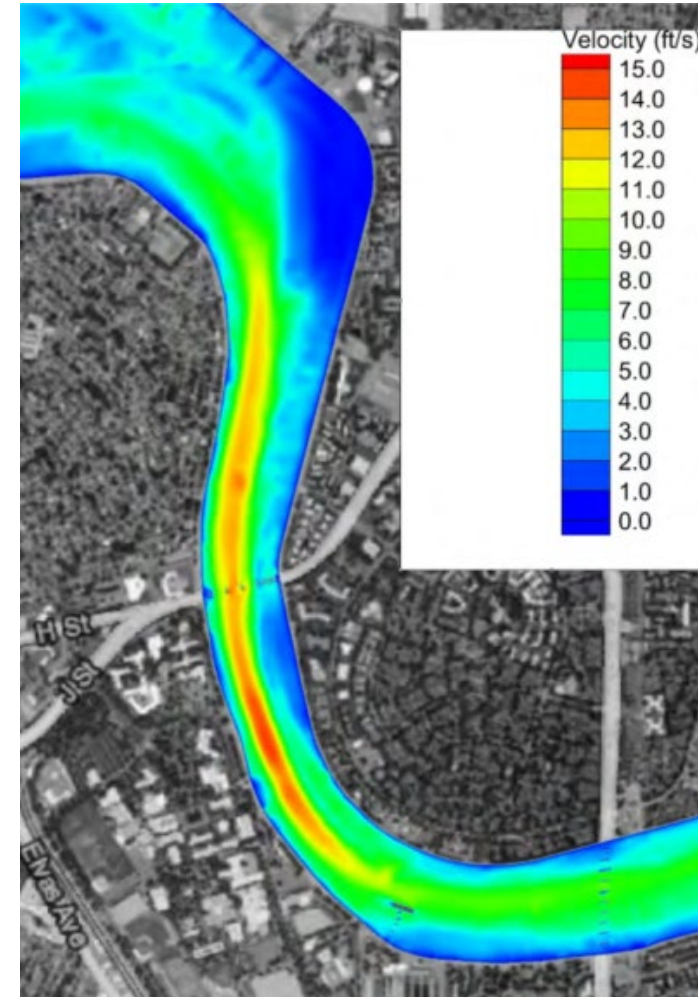


Up to 11 miles of erosion protection measures

Critical area: Paradise Beach – Howe Ave

Narrow levees lead to high flood flow velocities

High velocities at flood flows could lead to substantial levee erosion



Velocities at 160,000 cfs



AMERICAN RIVER EROSION PROTECTION

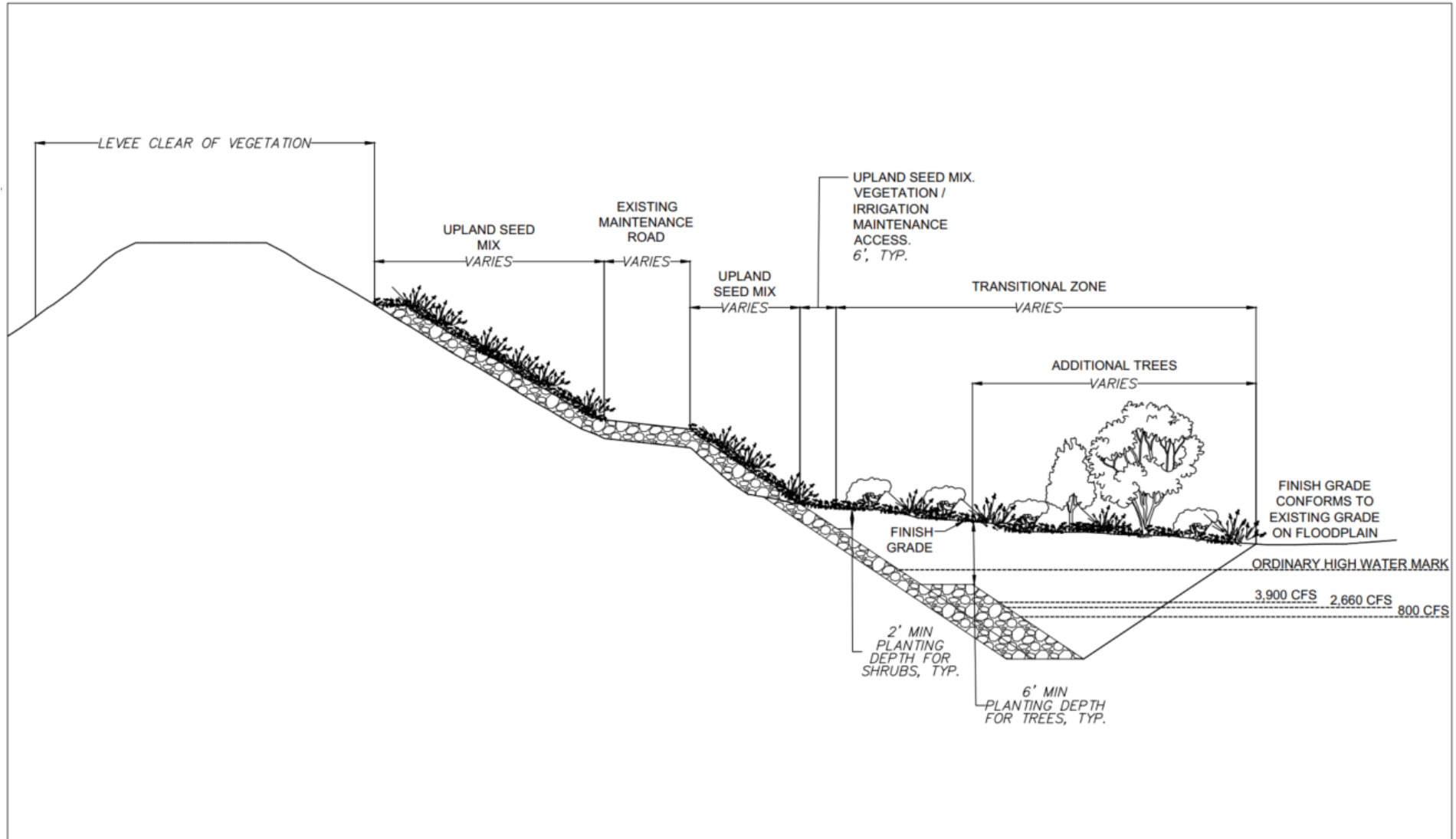


Erosion protection measures combine two approaches:

- Launchable rock trench
- Bank protection with planting bench and launchable toe



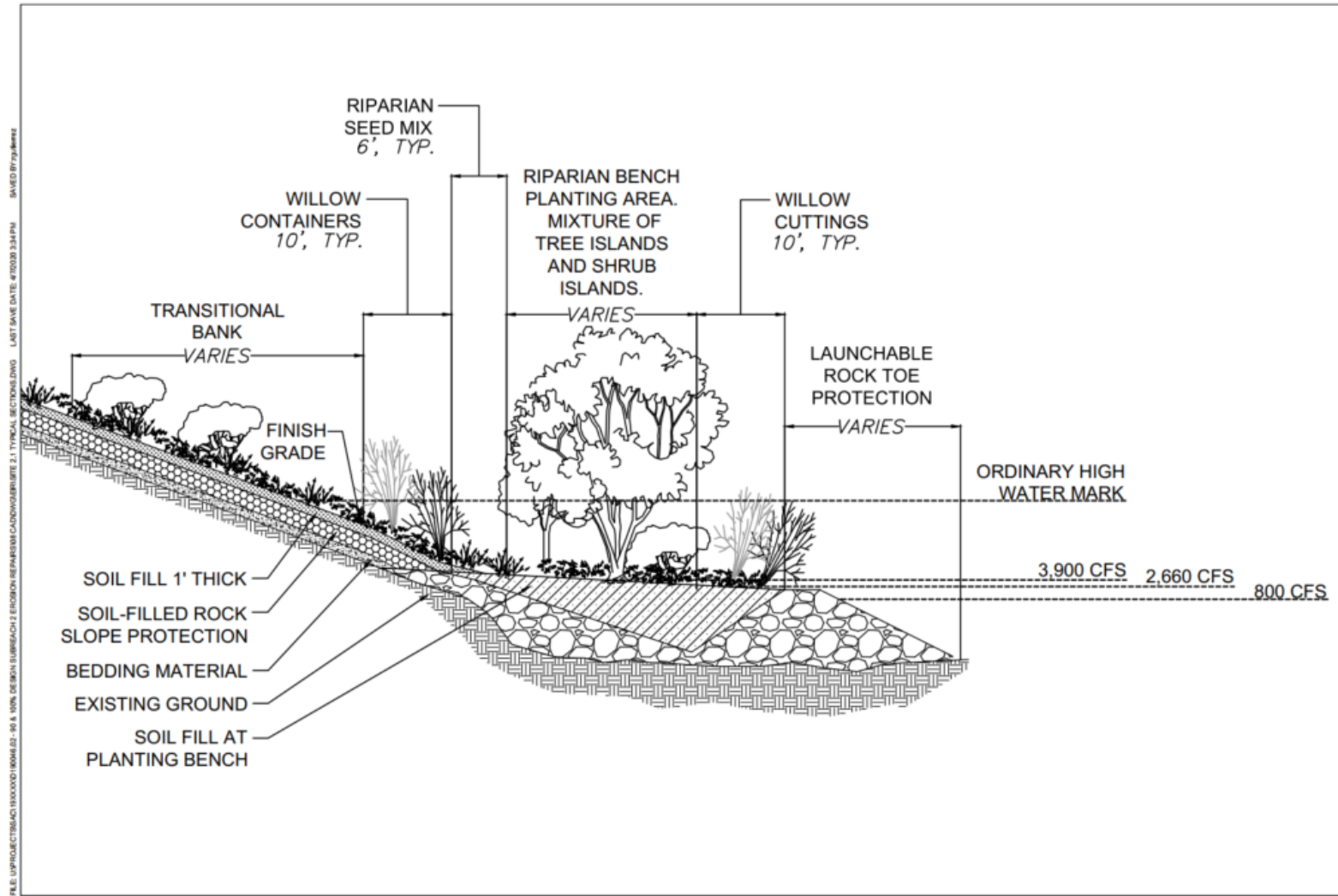
LAUNCHABLE ROCK TRENCH



ARCF 2016 American River Contract 1

Launchable Rock Trench and Soil-filled Rock Slope Protection (typical cross section)

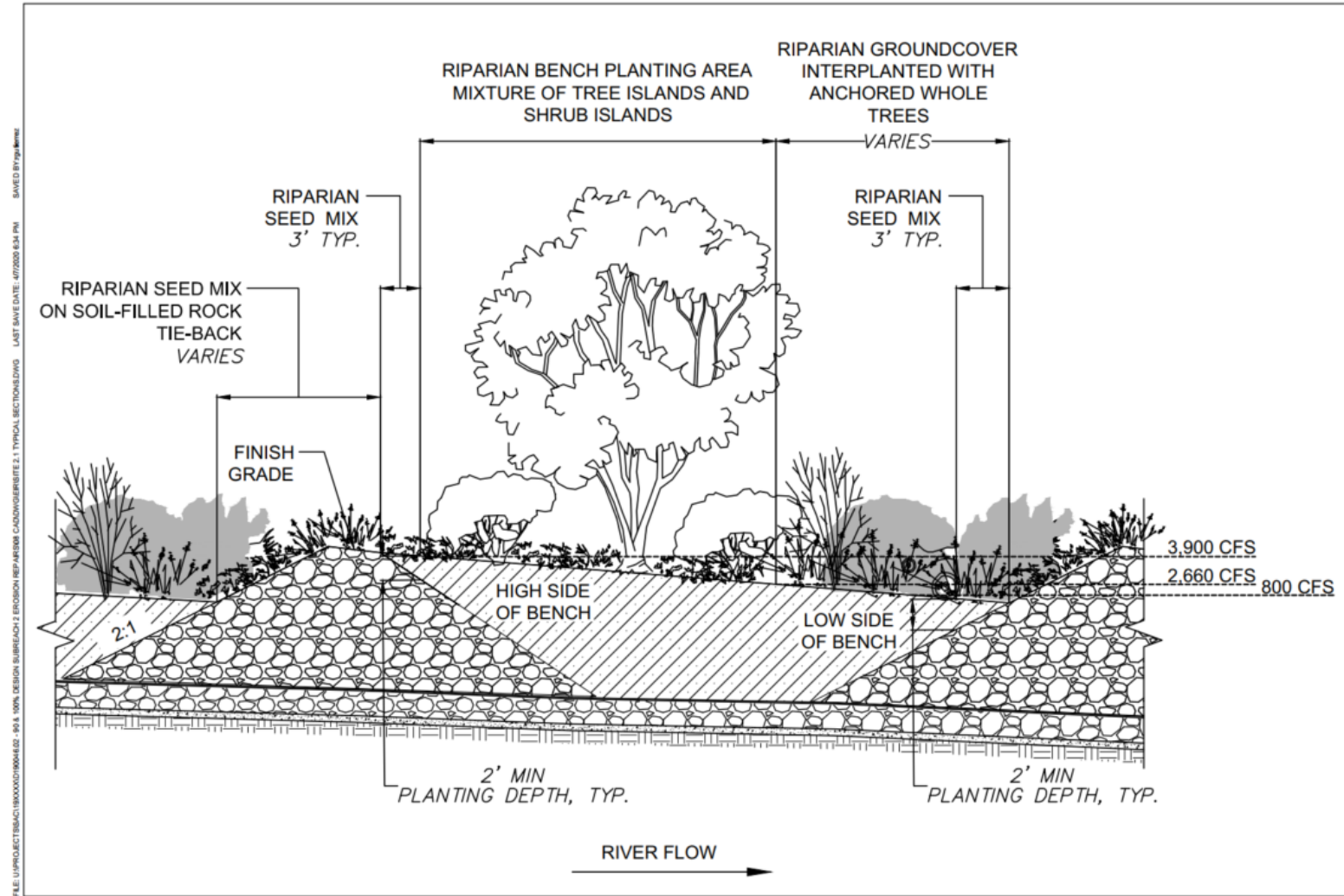
PLANTING BENCH



ARCF 2016 American River Contract 1

Planting Bench and Soil-filled Rock Slope Protection (typical cross section)

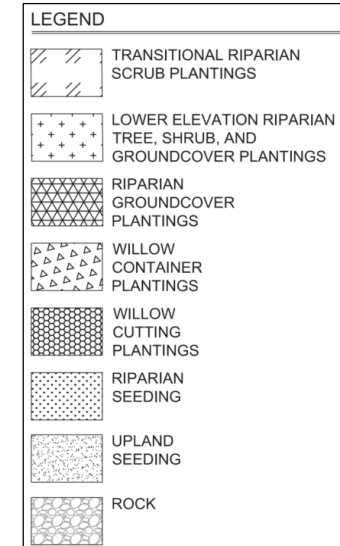
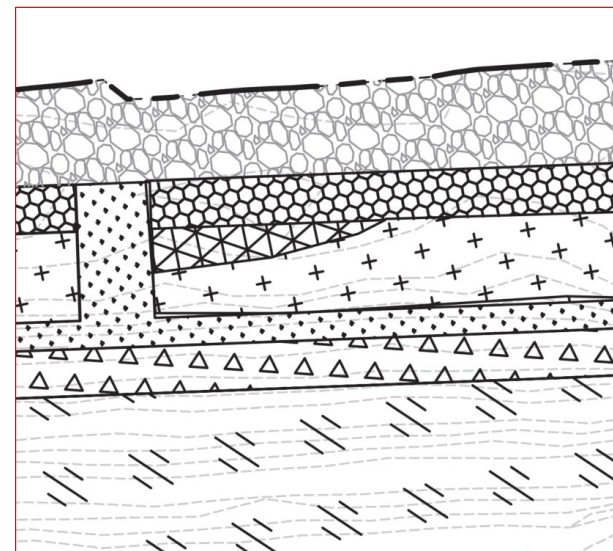
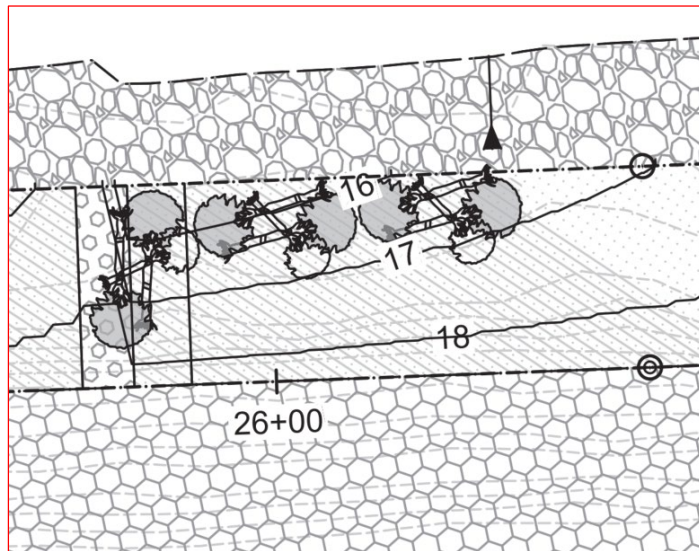
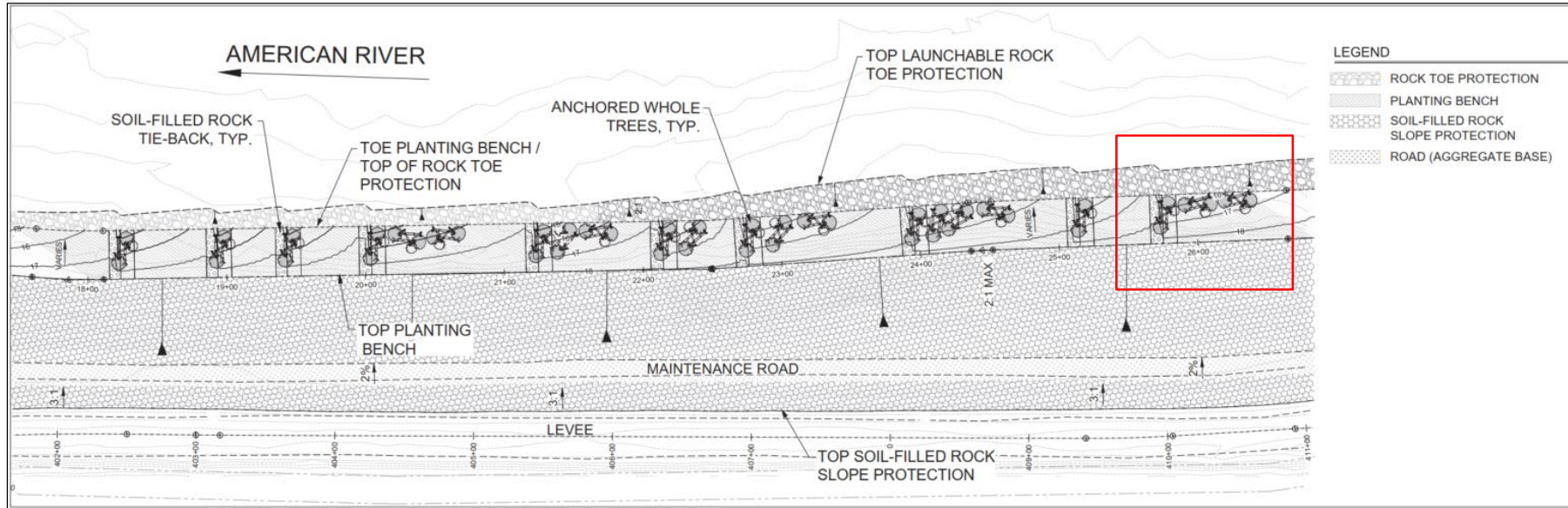
PLANTING BENCH



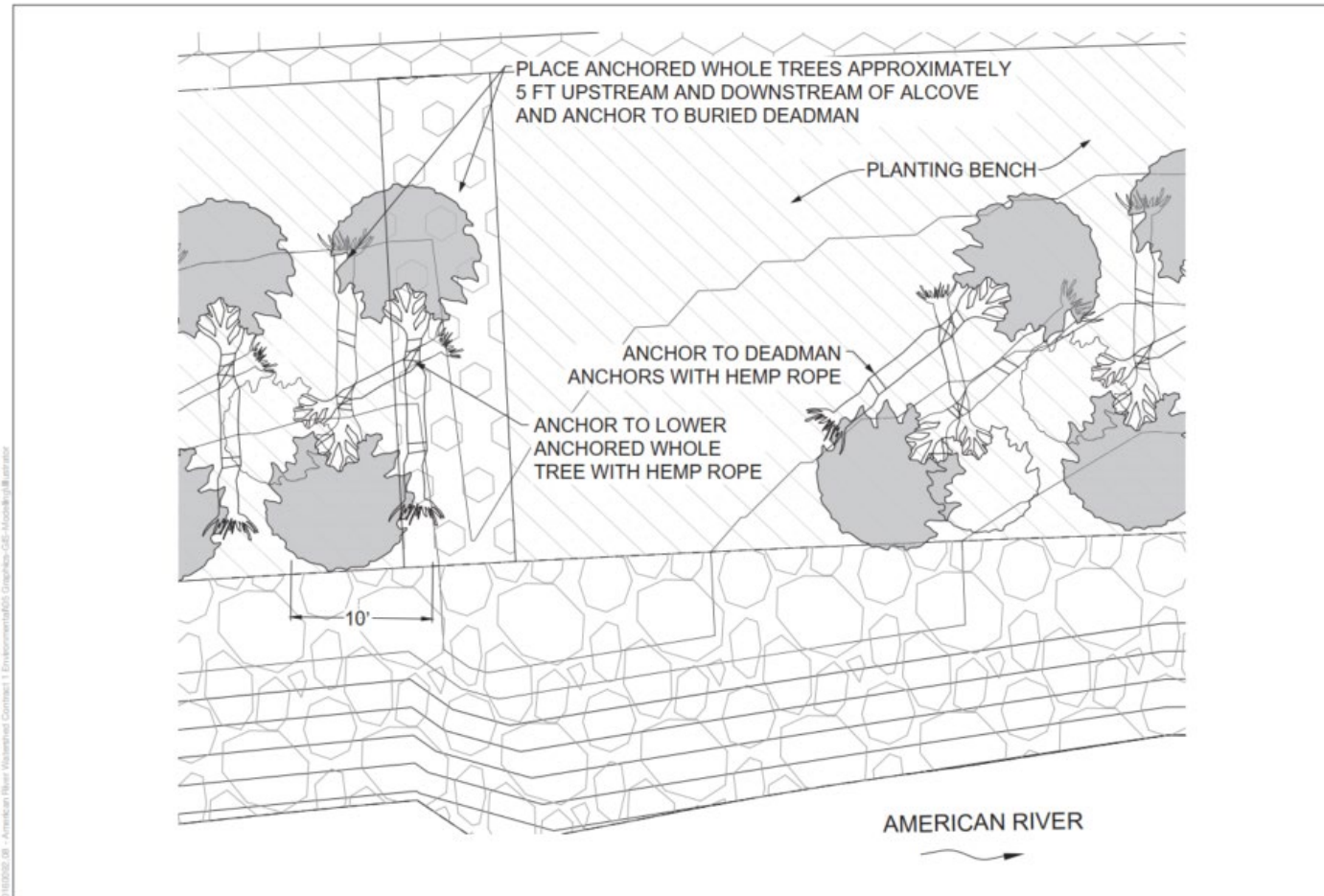
ARCF 2016 American River Contract 1

Planting Bench and Tie-Backs (typical longitudinal section parallel to levee)

PLANTING BENCH DESIGN



ANCHORED TREES AND TIE-BACKS



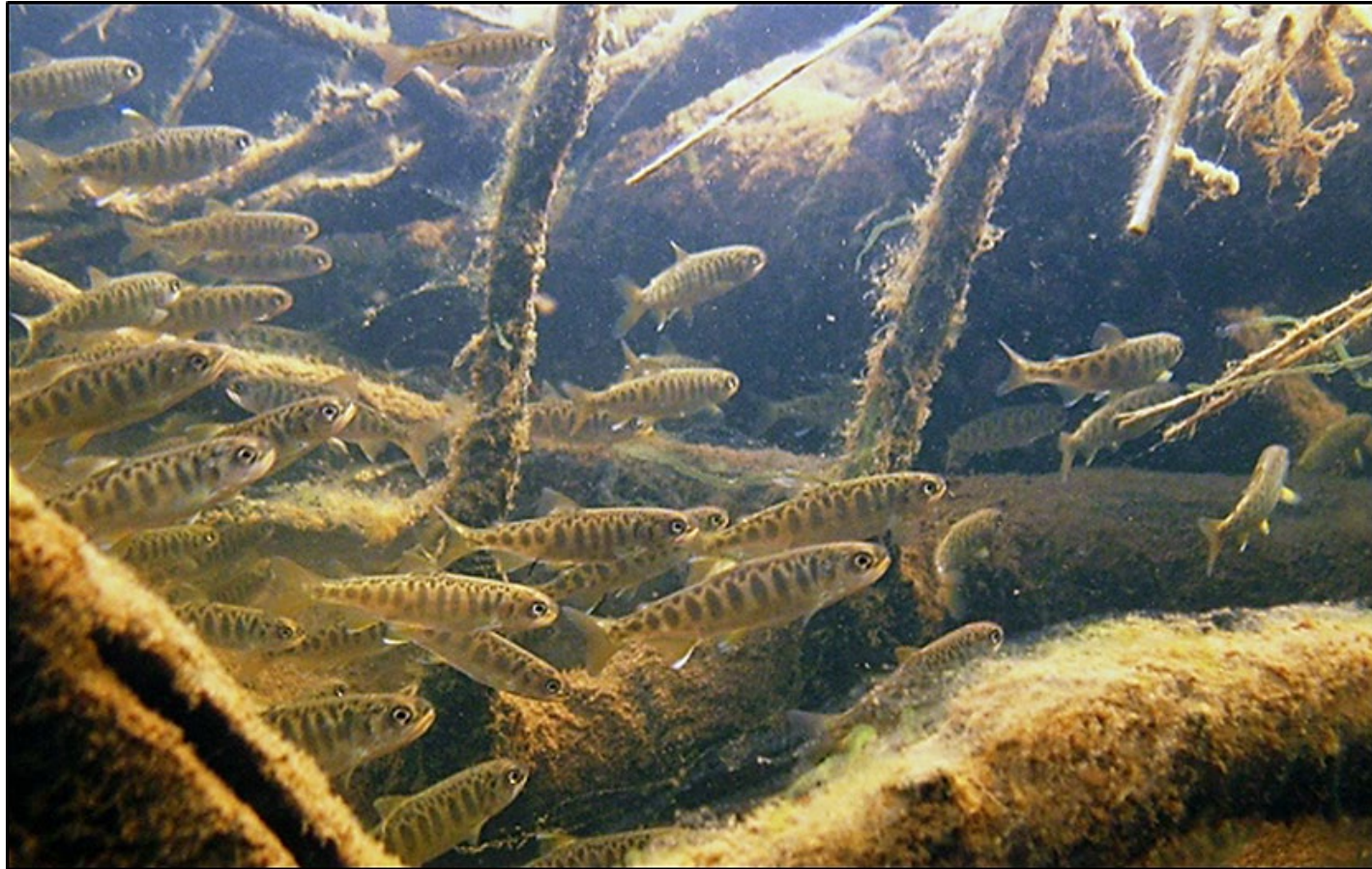
SOURCE: USACE, 2020

ARCF 2016 American River Contract 1

Anchored trees provide juvenile salmon and steelhead habitat



HABITAT FOR JUVENILE SALMON AND STEELHEAD



. Photo: USFWS/Togiak National Wildlife Refuge (CC BY-NC-ND 2.0)
https://www.flickr.com/photos/usfws_alaska/6479109041/



SUPPLEMENTAL EA/EIR

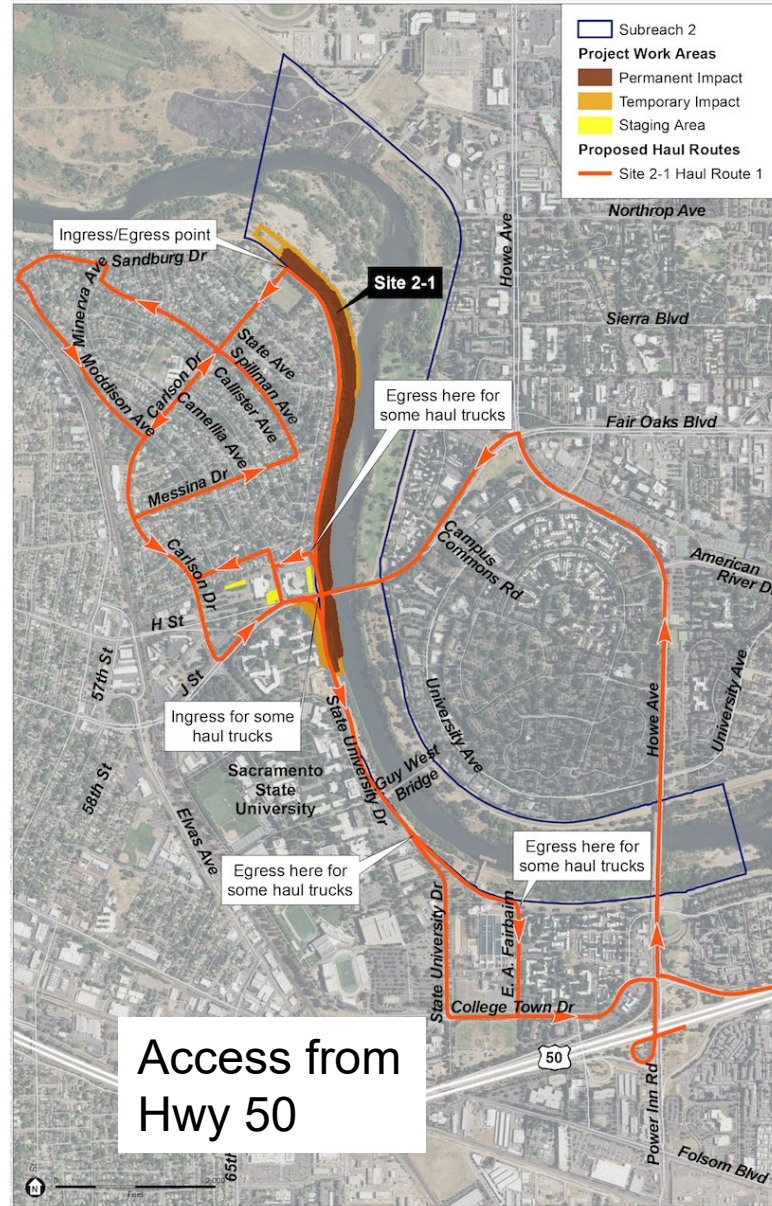
TOPIC AREAS ANALYZED



- Visual Resources
- Hydrology and Water Quality
- Vegetation and Wildlife
- Fisheries
- Special Status Species
- Cultural Resources
- Transportation and Circulation
- Air Quality
- Greenhouse Gas Emissions and Energy Consumption
- Noise
- Recreation
- Public Utilities and Service Systems
- Hazards and Hazardous Materials

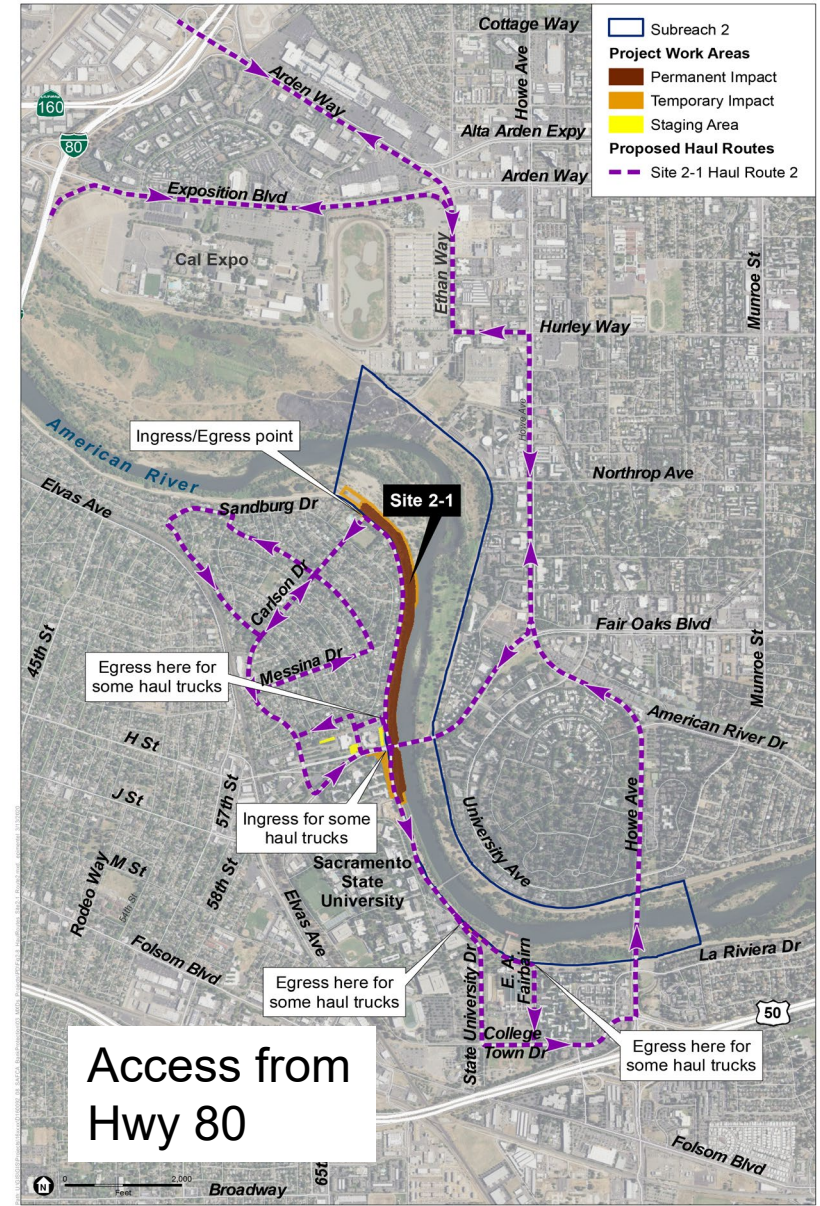


HAUL ROUTES



Access from Hwy 50

Haul trucks will access Site 2-1 from Hwy 50 or Hwy 80 during construction



Access from Hwy 80

MITIGATION MEASURES



Detour Routes



Source: NHC

Turbidity Curtains



Source: SAFCA

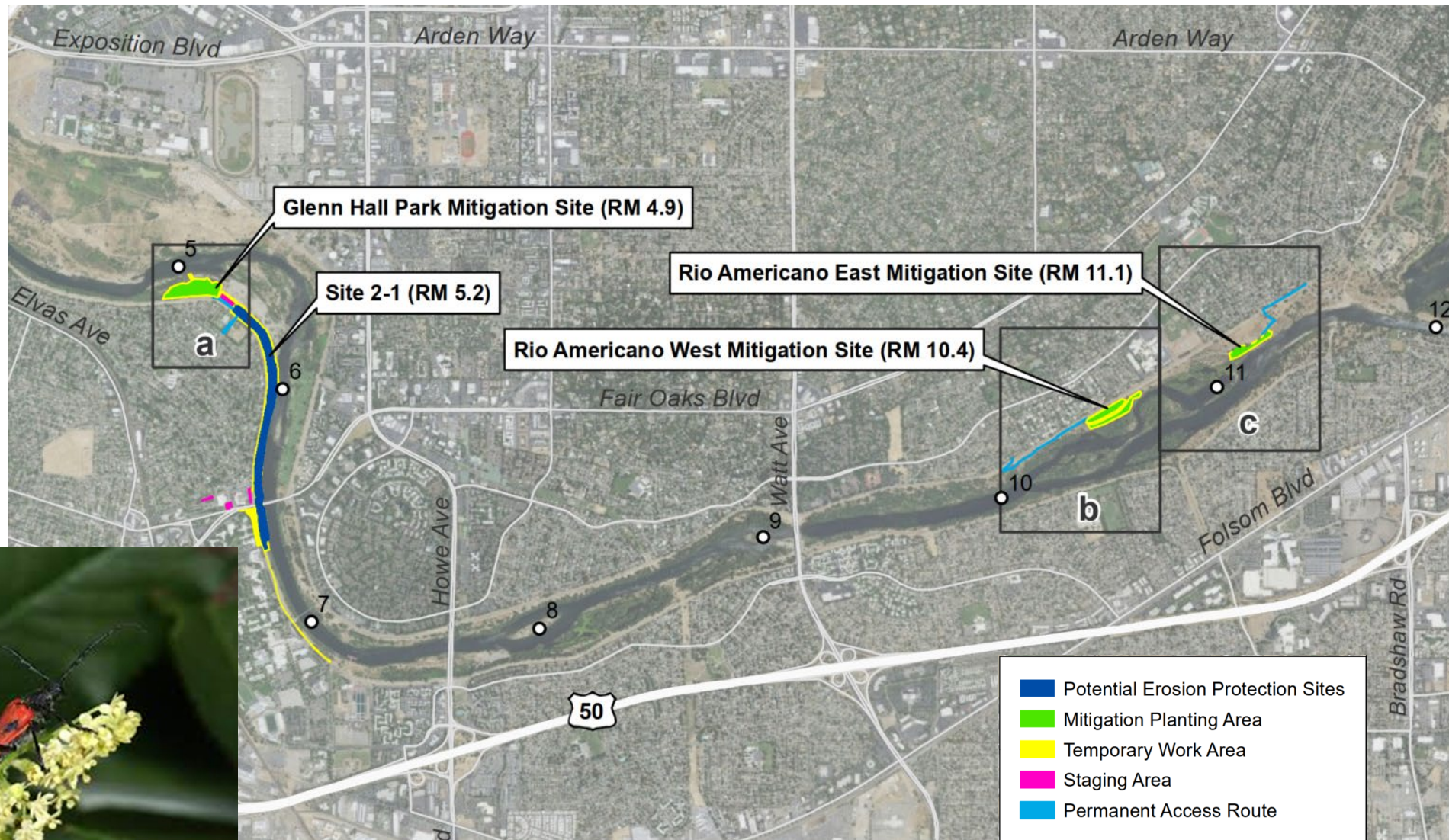
Anchored Trees for Fish



Source: SAFCA

Elderberry Shrub Transplant

THREE HABITAT MITIGATION SITES



A male valley elderberry longhorned beetle on elderberry.
Photo courtesy of Jon Katz and Joe Silveira, USFWS



ENVIRONMENTAL COMMITMENTS AND CONSISTENCY

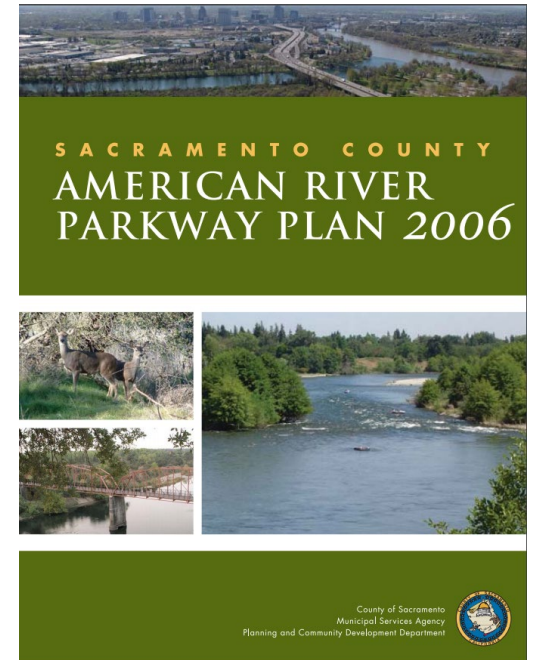


Environmental Commitments

- Final EIS/EIR
- Biological Opinions (NMFS, USFWS)
- Water Quality Certification (Water Board)

Consistency

- American River Parkway Plan
- Wild and Scenic Rivers Act





ANTICIPATED CONSTRUCTION SCHEDULE



Pre-construction (November 2020 - March 2021)

- Site prep, elderberry shrub transplant, cut and trim trees

Site Construction (Summer 2021 - Fall/Winter 2021)

- Install erosion protection and backfill for revegetation

Post-Construction Planting (Summer 2021 – Fall 2022)

- Install mixture of native vegetation on-site and within mitigation sites



NEPA/CEQA COMMENTS



Draft Supplemental EA/EIR is available at:


sacleveeupgrades.com

Public Comment Period: June 5 – July 20, 2020

Final Document Adopted/Certified: Fall/Winter 2020



FOR MORE INFORMATION...


[About](#)
[Business With Us](#)
[Missions](#)
[Locations](#)
[Careers](#)
[Media](#)
[Library](#)
[Contact](#)
[Coronavirus](#)

US Army Corps of Engineers Sacramento District Website Website



- [Project Overview](#)
- [American River Levees](#)
- [Sacramento River Levees](#)
- [Sacramento Weir](#)
- [Subscribe for Construction & Traffic email updates](#) 
- [Project Information Tri-fold](#) 

Reducing flood risk in Sacramento

Greater Sacramento, California, is often considered to be the most at-risk region in America for catastrophic flooding, relying on an aging system of levees, weirs and bypasses and Folsom Dam to reduce its flood risk. But that system, just like a chain, is only as strong as its weakest link. Together, the U.S. Army Corps of Engineers, California's Central Valley Flood Protection Board, California Department of Water Resources, and the Sacramento Area Flood Control Agency have made tremendous progress in reducing the flood risk, but more work remains. Through the Bipartisan Budget Act, the Corps has received full upfront funding to modernize Sacramento's aging flood infrastructure. This allows us to more efficiently implement nearly \$1.8 billion in upgrades to Sacramento's flood risk management system. The authorized work includes up to: 13 miles of seepage cutoff walls, 21 miles of bank protection, 5 miles of levee stabilization, 5 miles of levee raises and widening the Sacramento Weir and bypass.

Current Project Activities

Sacramento River East Levee Contract 1 Construction

sacleveeupgrades.com



CLOSURES AND NOTICES



Stay Informed about Temporary Road and Trail Closures:

– Subscribe to construction and traffic email updates at sacleveeupgrades.com

– For updates follow us:

On Facebook:
www.facebook.com/SacramentoDistrict

On Twitter:
www.twitter.com/USACESacramento



Source: Sacramento County Regional Parks



HOW TO PROVIDE COMMENTS

1. Comment now:

Provide audio comments at this webinar (state name and affiliation)
Use WebEx “raise hand” function by clicking on the three dots
(phone audio: use *3 to “raise hand”)

2. Write:

Miles Claret
Department of Water Resources
3464 El Camino Avenue Room 150
Sacramento, CA 95821

OR

Public Affairs Office
U.S. Army Corps of Engineers
1325 J Street Room 1513
Sacramento, CA 95814

3. Email:

PublicComment@cvflood.ca.gov

spk-pao@usace.army.mil

use “American River Contract 1” in subject line