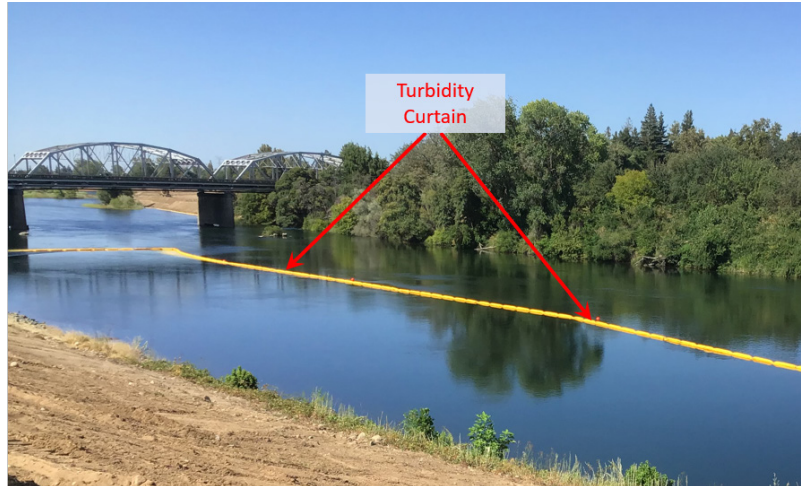


Caution Boaters and Swimmers!

U.S. Army Corps of Engineers contractors are working to armor approximately 2.5 miles of levee along the lower American River between Sacramento State University and Glenn Hall Park.

In this section where construction work is occurring, you will see yellow barriers that look like long yellow flotations. These are our in-water environmental protection barriers called turbidity curtains. They're used to control sediments stirred up by construction activities.

Please avoid recreating near these turbidity curtains. They present potential hazards to boaters and swimmers as they are held in place with ropes, weights, and anchors that can cause boaters and swimmers to become entangled in the curtain or anchor lines.



To help you stay safe while we complete this important flood risk reduction work, please:

- Avoid in-water environmental protection barriers (yellow barriers)
- Follow the center of the channel through the construction section
- Stay away from shoreline as major construction is occurring on both sides of the river