

AMERICAN RIVER WATERSHED COMMON FEATURES, CALIFORNIA WRDA 2016 PROJECT

American River Contract 2

Supplemental Environmental Impact Statement / Supplemental Environmental Impact Report

Sacramento District
US Army Corps of Engineers

29 JUNE 2021



US Army Corps
of Engineers®



ON-LINE COMMUNICATION TIPS

If you have joined by computer and computer audio, you will only see the panelist and the presentation deck.

For help with audio problems use the Q&A chat at the bottom of the screen

Computer Use	Phone Only Use
<ul style="list-style-type: none">- You will be muted upon entry- To “raise hand”, click on three dots- Please lower hand after you are recognized- We will un-mute you during the public comment period at the end of the presentation- To get help, click on the Q&A icon at the bottom of the screen	<ul style="list-style-type: none">- To raise your hand, use *3- We will un-mute you.



HOW TO PROVIDE COMMENTS

1. Notify us via Webex during this meeting that you would like to make comments at the end of this presentation. **Comments will be recorded and transcribed by a court reporter. Commenters are limited to one comment period of 2 minutes.**
2. In writing to the following addresses:

Flood Projects Office
 Department of Water Resources
 3464 El Camino Avenue Room 150
 Sacramento, CA 95821

OR

Public Affairs Office
 U.S. Army Corps of Engineers
 1325 J Street Room 1513
 Sacramento, CA 95814

Email:
PublicCommentARCF16@water.ca.gov

Email:
spk-pao@usace.army.mil

use “American River Contract 2” in subject line

There will be no answers to comments at this meeting. Responses to comments will be provided in the Final Supplemental EIS/EIR for comments received here and in writing.



AGENDA

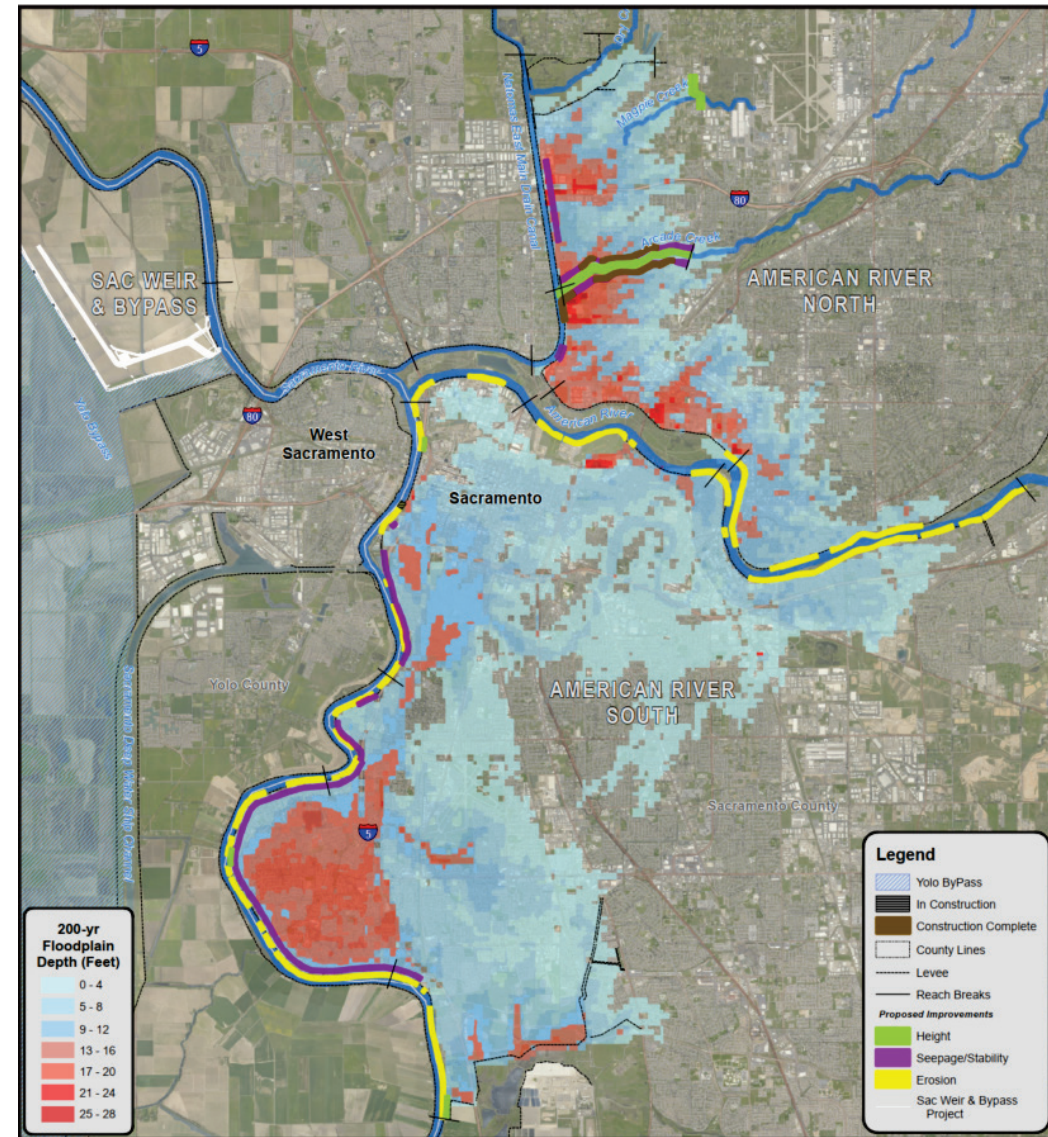
- 2016 American River Watershed Common Features General Reevaluation Report (2016 ARCF GRR EIS/EIR)
 - Final Environmental Impact Statement / Final Environmental Impact Report
- American River Contract 2
 - Supplemental EIS / Supplemental EIR
- Opportunities for Public Input
 - During comment period after the presentation
 - Mail-in using information provided



AMERICAN RIVER WATERSHED COMMON FEATURES 2016



- Water Resources Development Act of 2016
- Emergency Supplemental Appropriations in the Bipartisan Budget Act of 2018





PROJECT PARTNERS

Federal Government



**US Army Corps
of Engineers®**

State Government



Central Valley
Flood Protection
Board



Department of
Water
Resources


Local Government





FOR MORE INFORMATION...




[About](#) ▾ [Business With Us](#) ▾ [Missions](#) ▾ [Locations](#) ▾ [Careers](#) ▾ [Media](#) ▾ [Library](#) [Contact](#) ▾ [Coronavirus](#)

US Army Corps of Engineers Sacramento District Website Website



Project Overview

American River Levees

Sacramento River Levees

Sacramento Weir

Subscribe for Construction & Traffic email updates



Project Information Tri-fold



Reducing flood risk in Sacramento

Greater Sacramento, California, is often considered to be the most at-risk region in America for catastrophic flooding, relying on an aging system of levees, weirs and bypasses and Folsom Dam to reduce its flood risk. But that system, just like a chain, is only as strong as its weakest link. Together, the U.S. Army Corps of Engineers, California's Central Valley Flood Protection Board, California Department of Water Resources, and the Sacramento Area Flood Control Agency have made tremendous progress in reducing the flood risk, but more work remains. Through the Bipartisan Budget Act, the Corps has received full upfront funding to modernize Sacramento's aging flood infrastructure. This allows us to more efficiently implement nearly \$1.8 billion in upgrades to Sacramento's flood risk management system. The authorized work includes up to: 13 miles of seepage cutoff walls, 21 miles of bank protection, 5 miles of levee stabilization, 5 miles of levee raises and widening the Sacramento Weir and bypass.

Current Project Activities

Sacramento River East Levee Contract 1 Construction

sacleveeupgrades.com



PROJECT NEED



Source: U.S. Army Corps of Engineers, Sacramento District

Post-Flood 1986 - Flow of 134,000 cfs



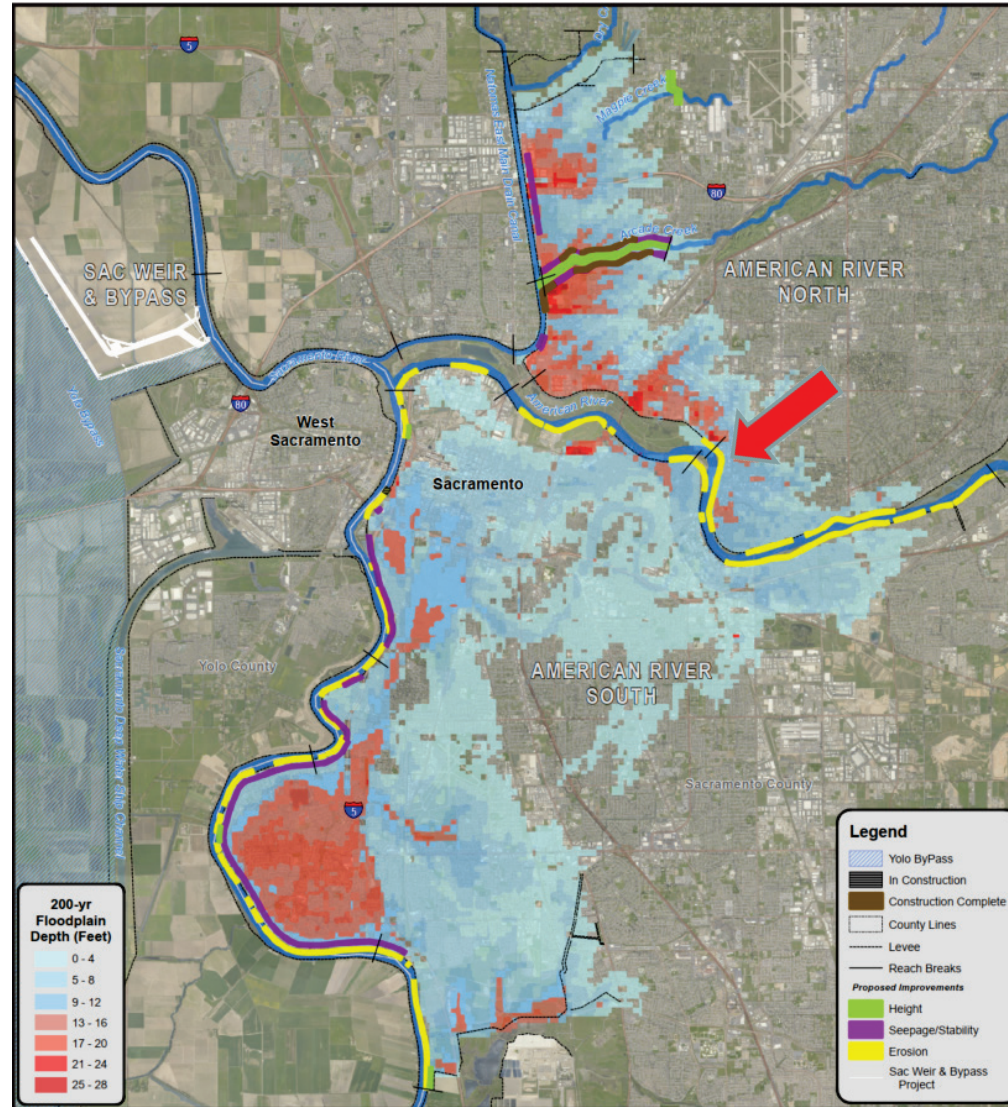
Source: U.S. Army Corps of Engineers, Sacramento District

Post-Flood 1986

Flooding from levee failure threatens the safety of over 500,000 people in the Sacramento Region



AMERICAN RIVER WATERSHED COMMON FEATURES 2016





AMERICAN RIVER EROSION PROTECTION



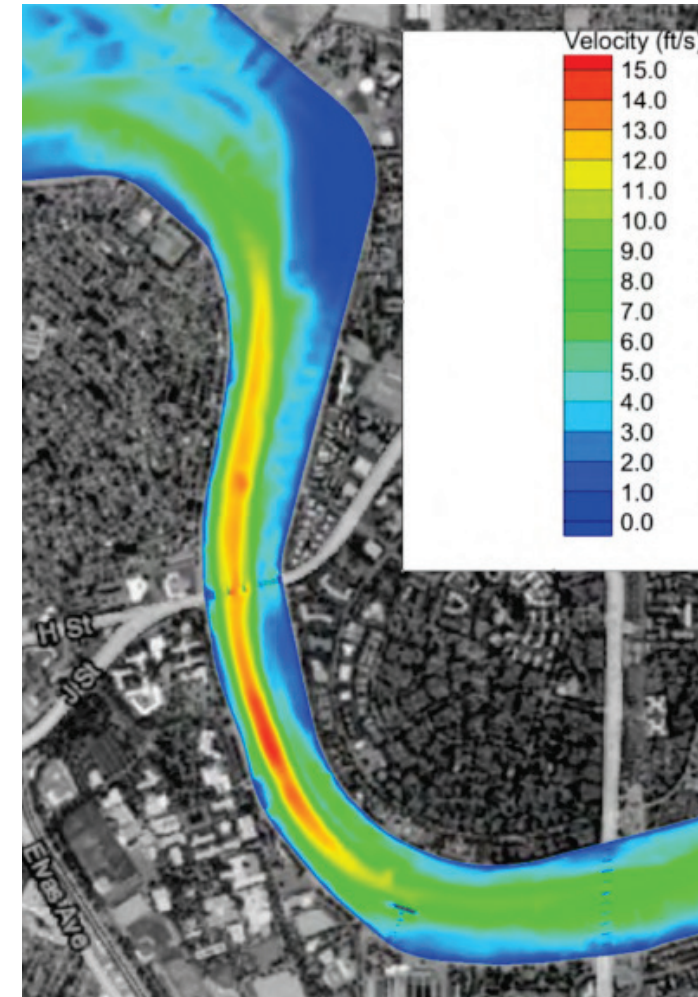
Up to 11 miles of erosion protection measures

Critical area: Paradise Beach – Howe Ave

Narrow levees – high flood flow velocities

High velocities at flood flows could lead to substantial levee erosion

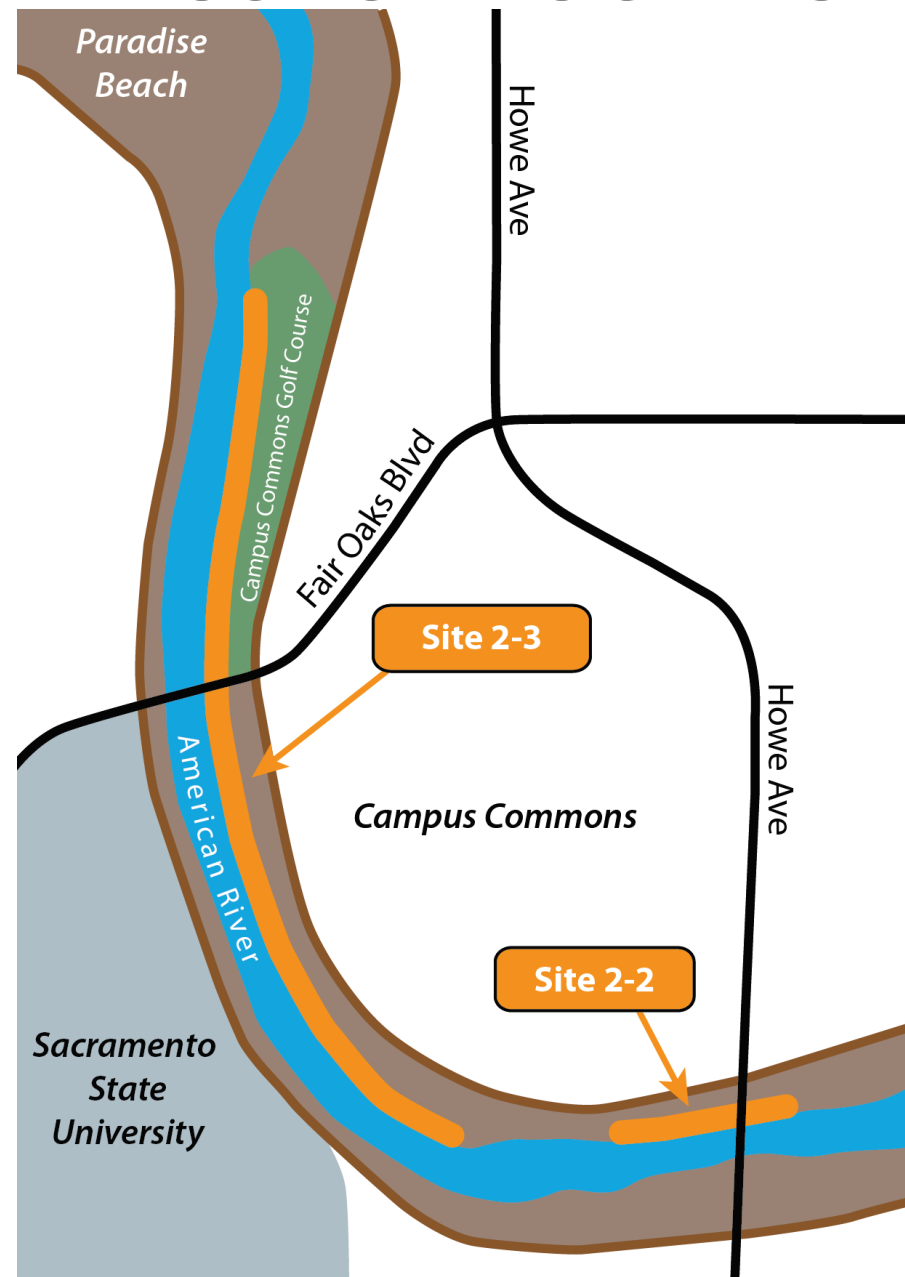
- *High priority area at Site 2-2 and 2-3*



Velocities at 160,000 cfs



PROJECT LOCATION



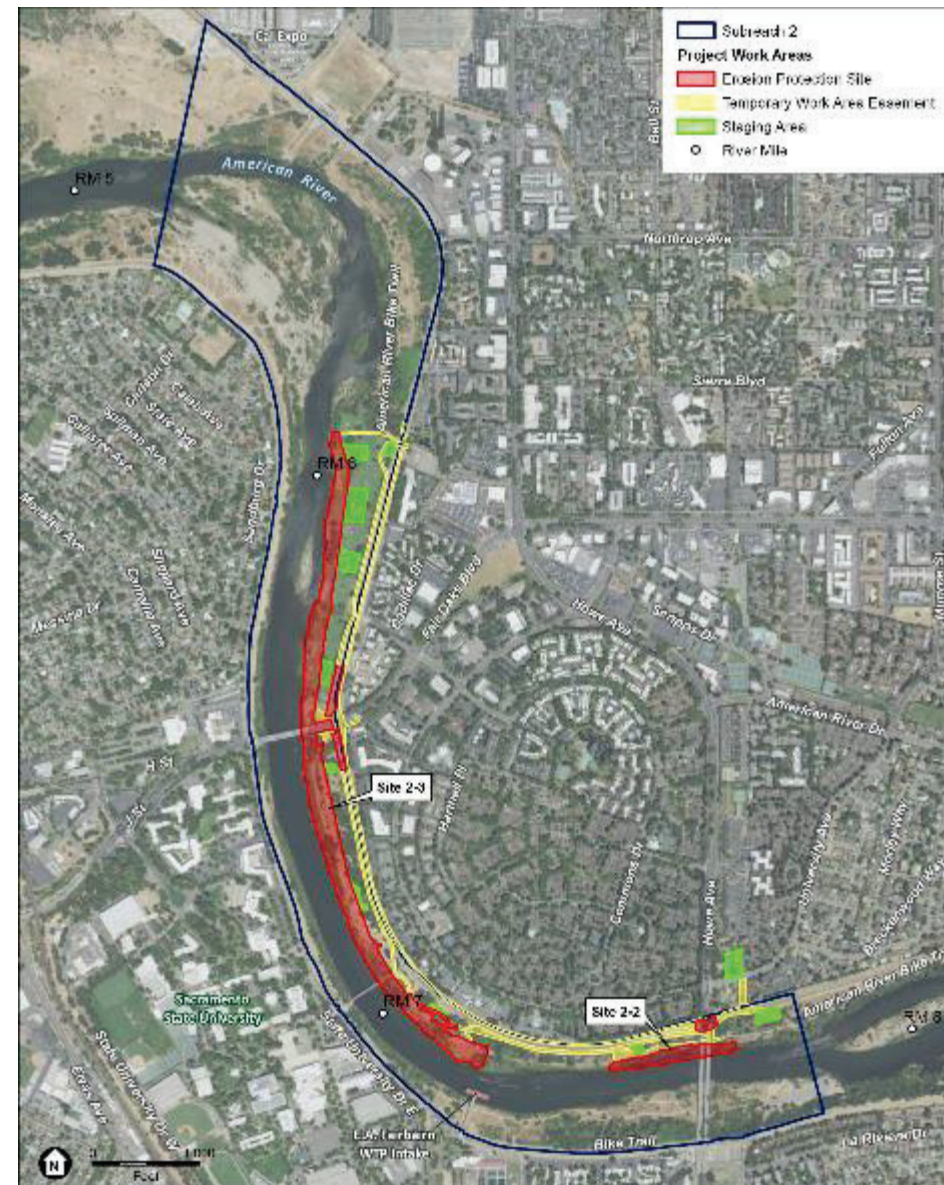


AMERICAN RIVER EROSION PROTECTION



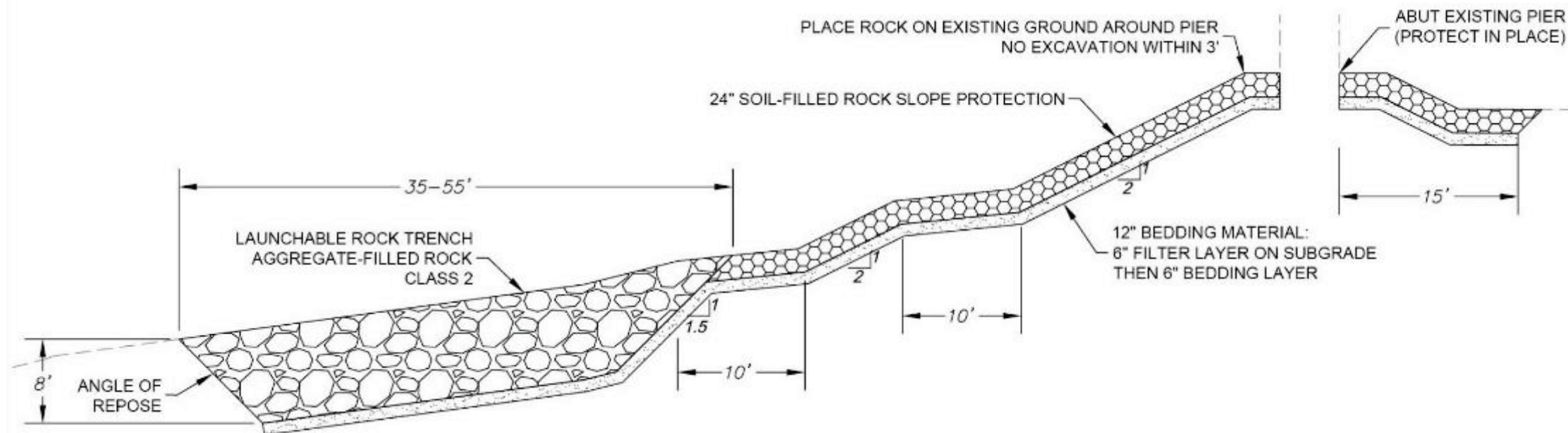
Combine erosion protection approaches

- Launchable rock trench
- Bank protection with planting bench and launchable toe



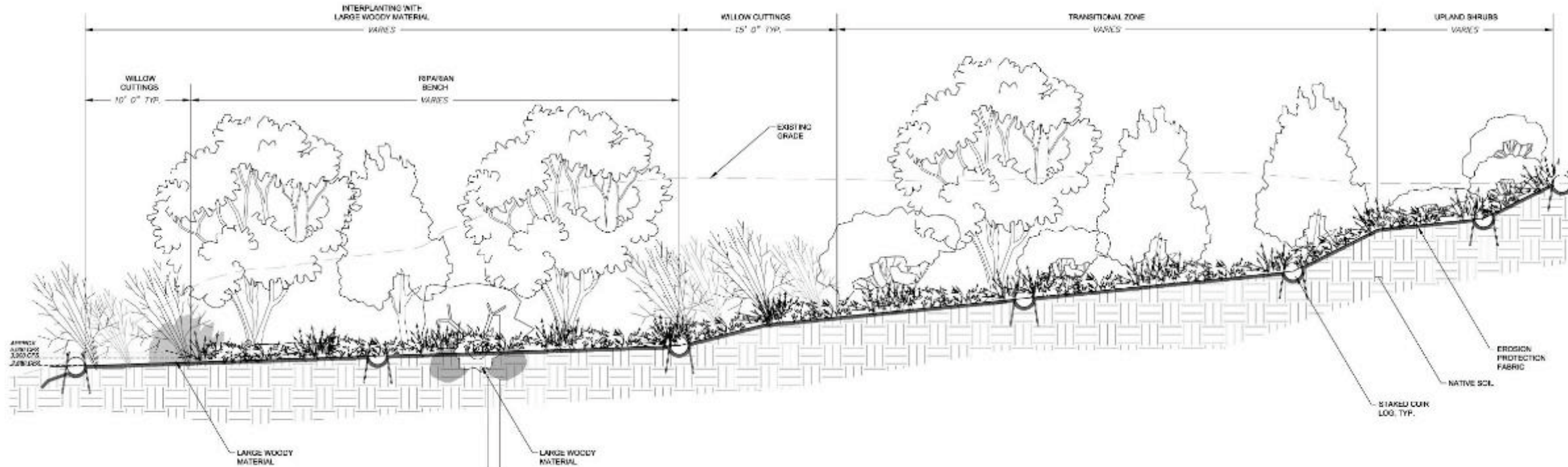


LAUNCHABLE ROCK TRENCH



Launchable Rock Trench and Soil-filled Rock Slope Protection (typical cross section)

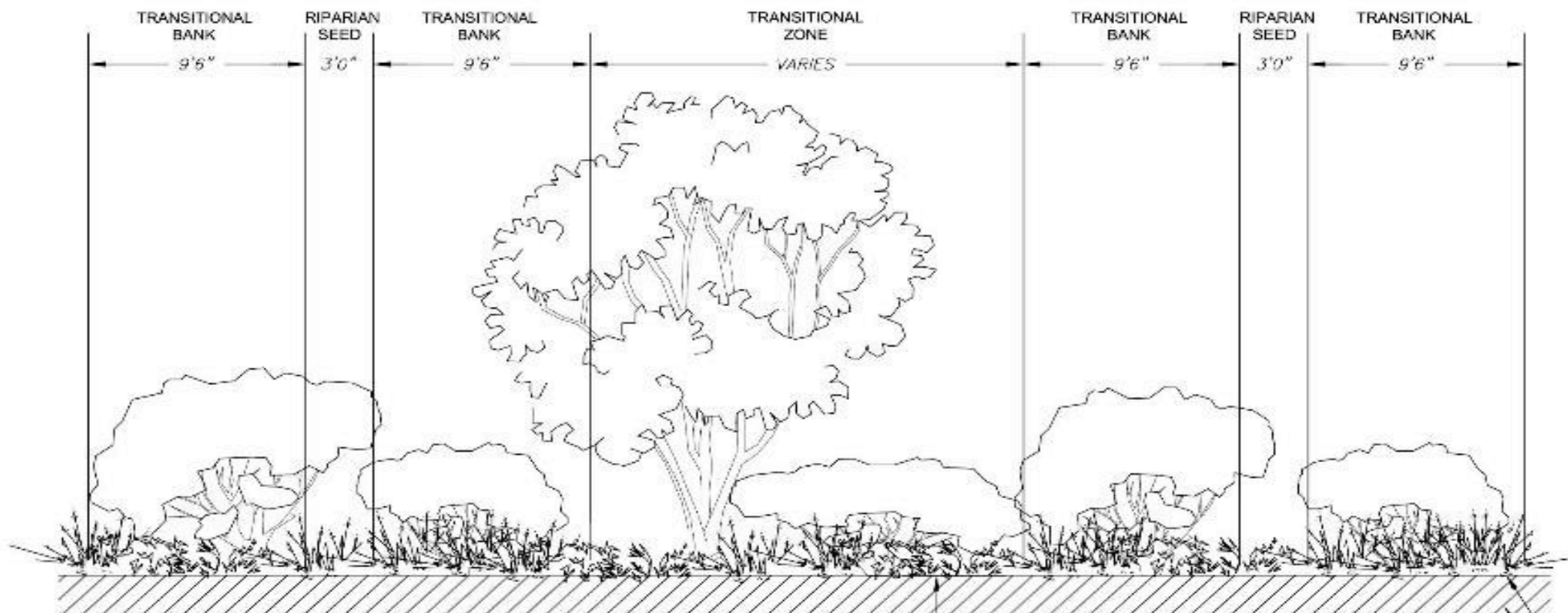
PLANTING BENCH



Planting Bench and Soil-filled Rock Slope Protection (typical cross section)



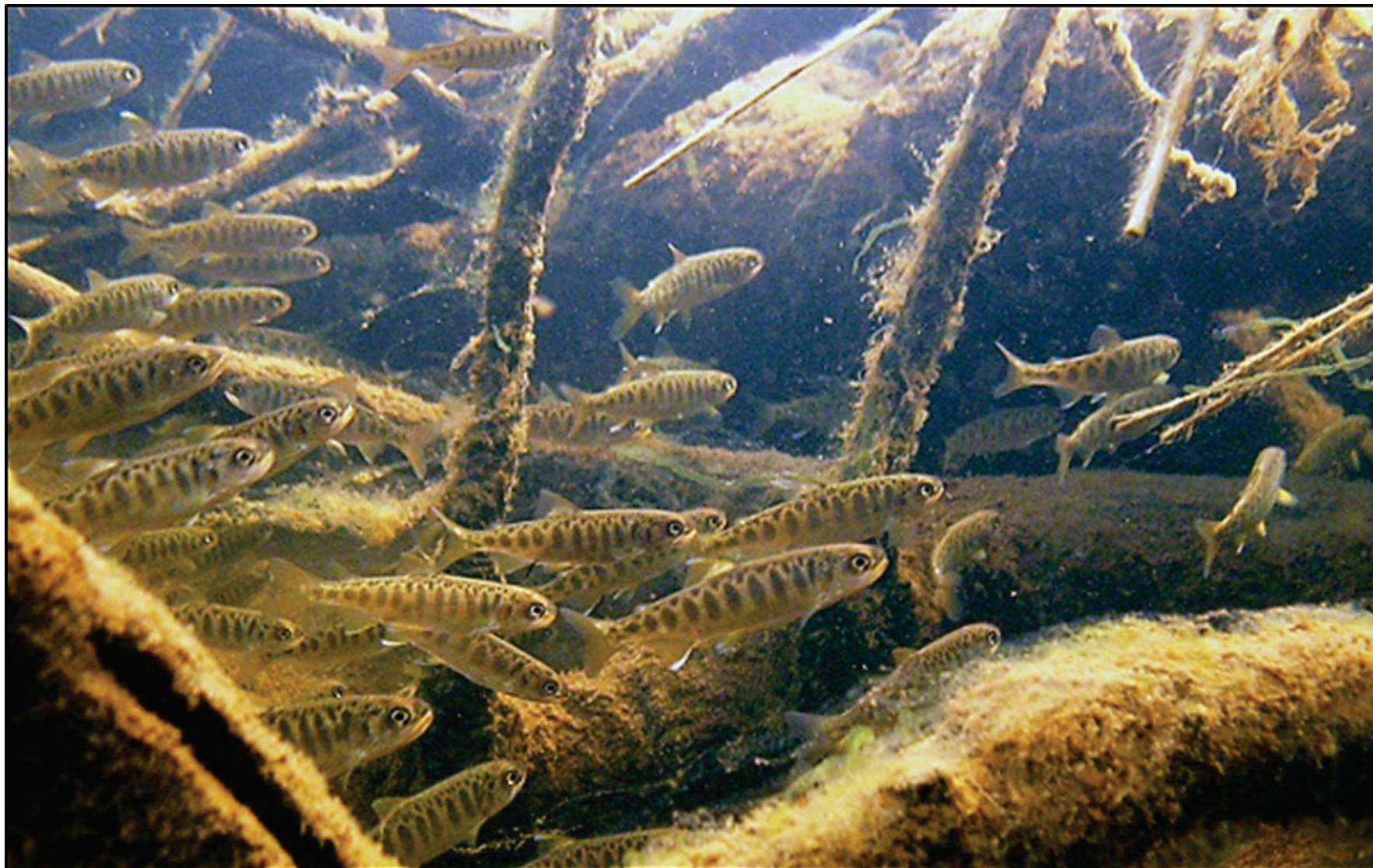
PLANTING BENCH



Planting Bench (typical cross section parallel to levee)

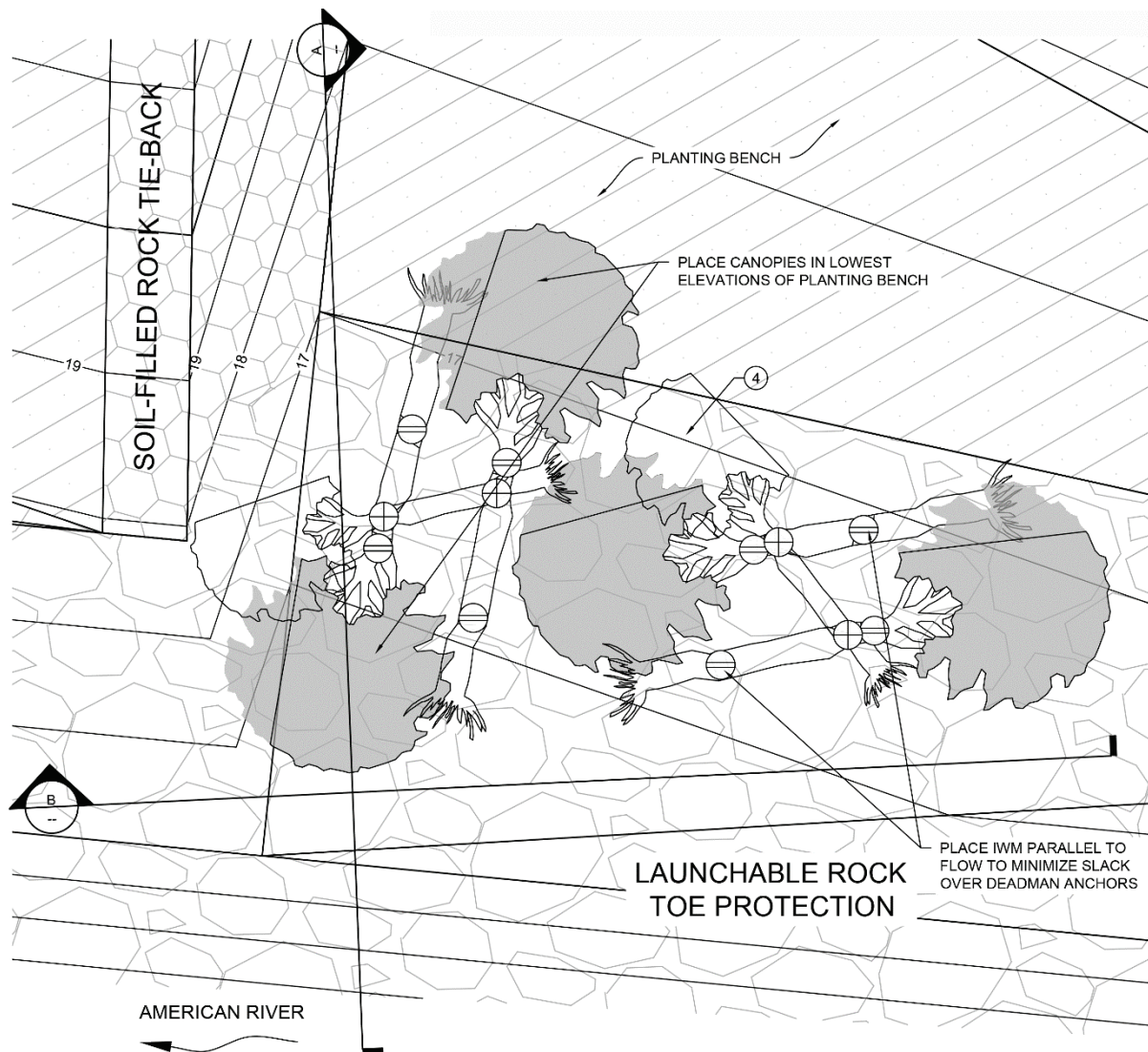


HABITAT FOR JUVENILE SALMON AND STEELHEAD





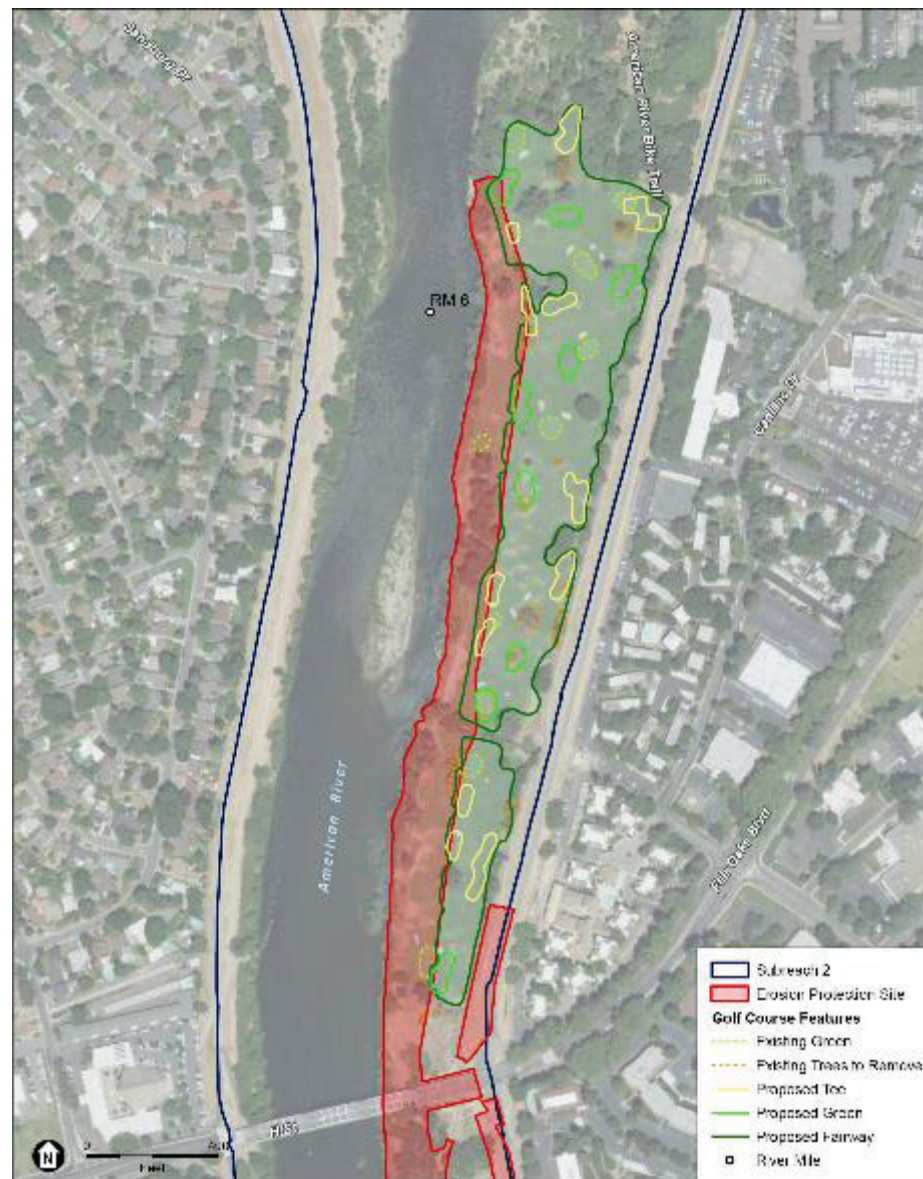
ANCHORED TREES



16 INSTREAM WOODY MATERIAL (IWM) TYPE 3
NTS.

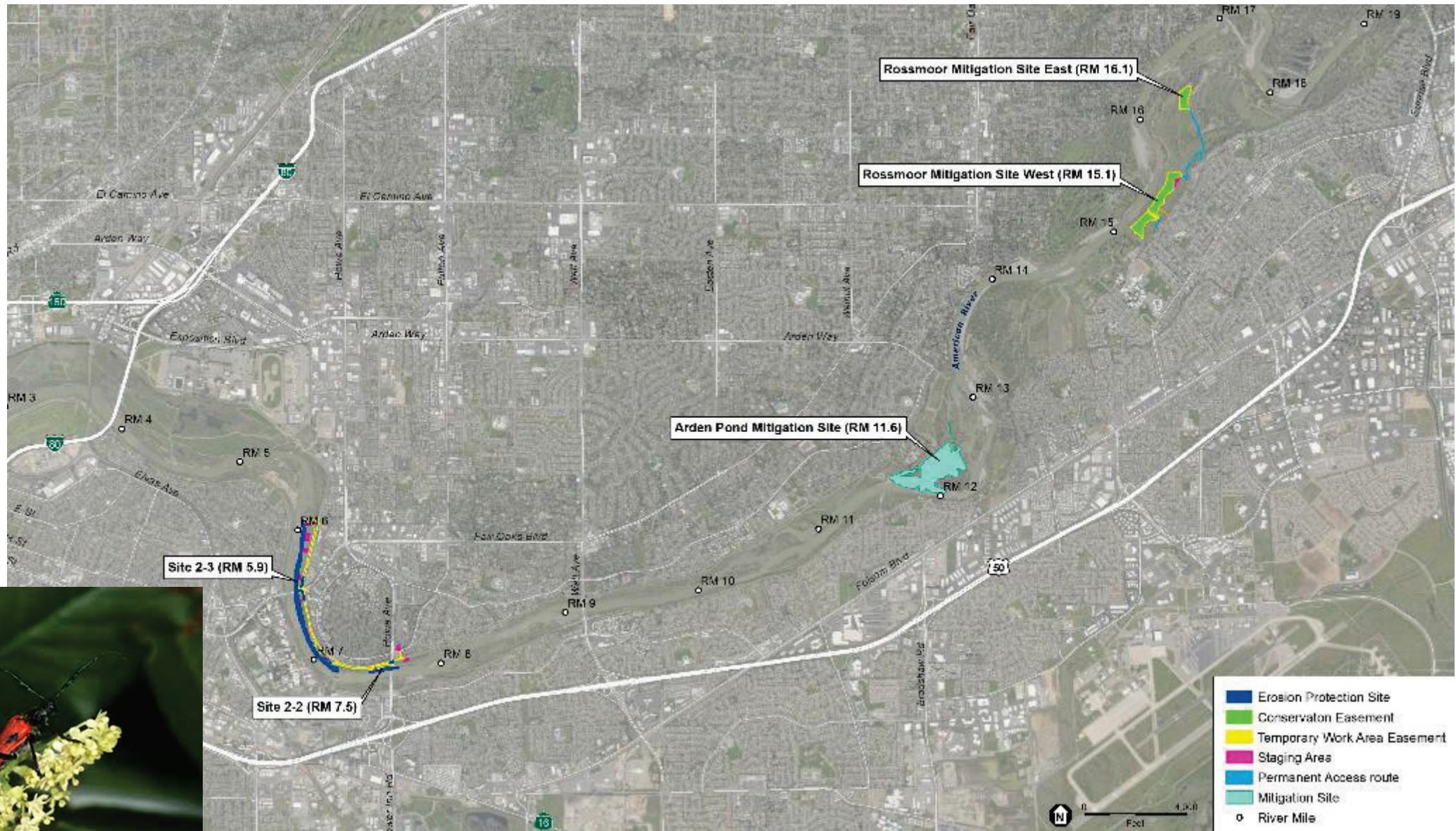


GOLF COURSE RECONSTRUCTION





THREE HABITAT MITIGATION SITES



A male valley elderberry longhorned beetle on elderberry.
Photo courtesy of Jon Katz and Joe Silveira, USFWS



ARDEN POND MITIGATION SITE

The image displays two aerial views of the Arden Pond area. The top view, labeled 'Existing', shows the current state of the site with the American River and surrounding vegetation. The bottom view, labeled 'Design', shows the proposed mitigation site with various colored overlays: blue for water bodies, green for vegetated areas, and purple for specific structures or features. Labels in the design view include 'Main Pond', 'West Pond', 'East Pond', 'Middle Pond', 'North Pond', 'South Pond', 'West Wetland', 'East Wetland', 'Middle Wetland', 'North Wetland', 'South Wetland', 'West Island', 'East Island', 'Middle Island', 'North Island', 'South Island', 'West Channel', 'East Channel', 'Middle Channel', 'North Channel', 'South Channel', 'West Dam', 'East Dam', 'Middle Dam', 'North Dam', 'South Dam', 'West Gate', 'East Gate', 'Middle Gate', 'North Gate', 'South Gate', 'West Wall', 'East Wall', 'Middle Wall', 'North Wall', 'South Wall', 'West Gate', 'East Gate', 'Middle Gate', 'North Gate', 'South Gate', 'West Wall', 'East Wall', 'Middle Wall', 'North Wall', 'South Wall'.



ARDEN POND MITIGATION SITE





ARDEN POND MITIGATION SITE CROSS SECTION





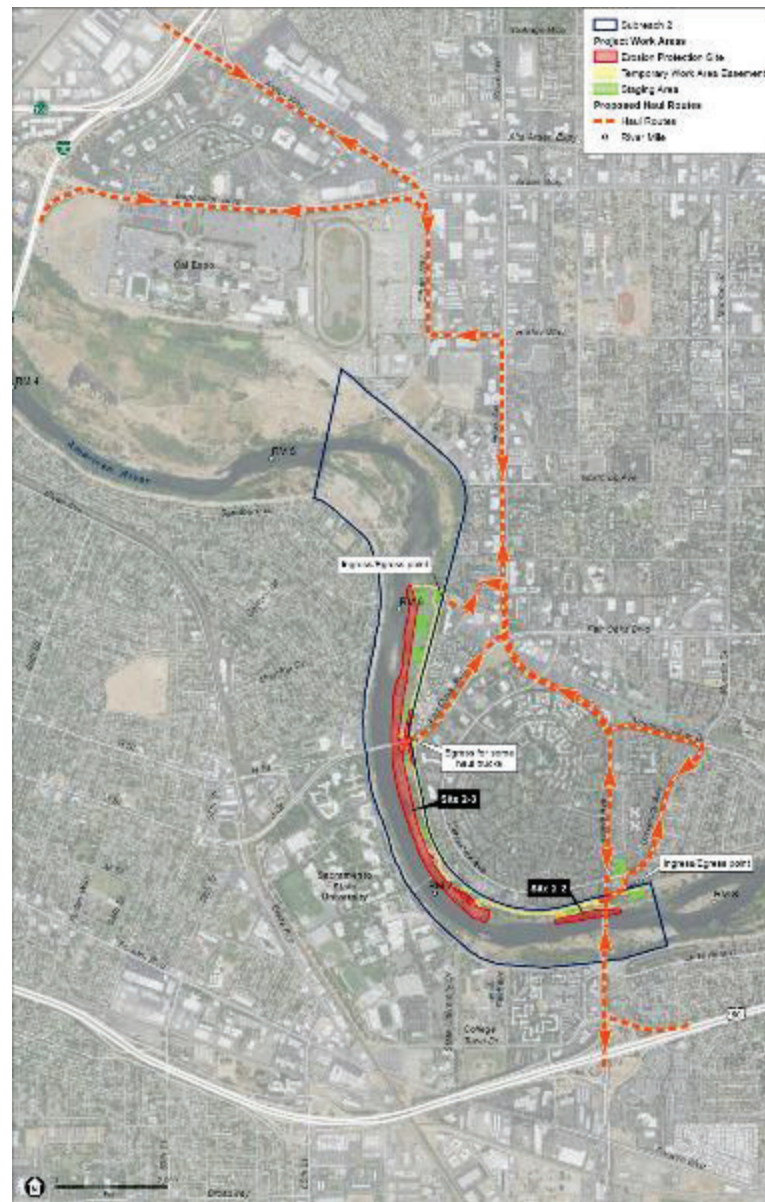
DRAFT SUPPLEMENTAL EIS/EIR

TOPICS ANALYZED

- Visual Resources
- Hydrology and Water Quality
- Vegetation and Wildlife
- Fisheries
- Special Status Species
- Cultural Resources
- Transportation and Circulation
- Air Quality
- Greenhouse Gas Emissions and Energy Consumption
- Noise and Vibration
- Recreation
- Public Utilities and Service Systems
- Hazards and Hazardous Materials



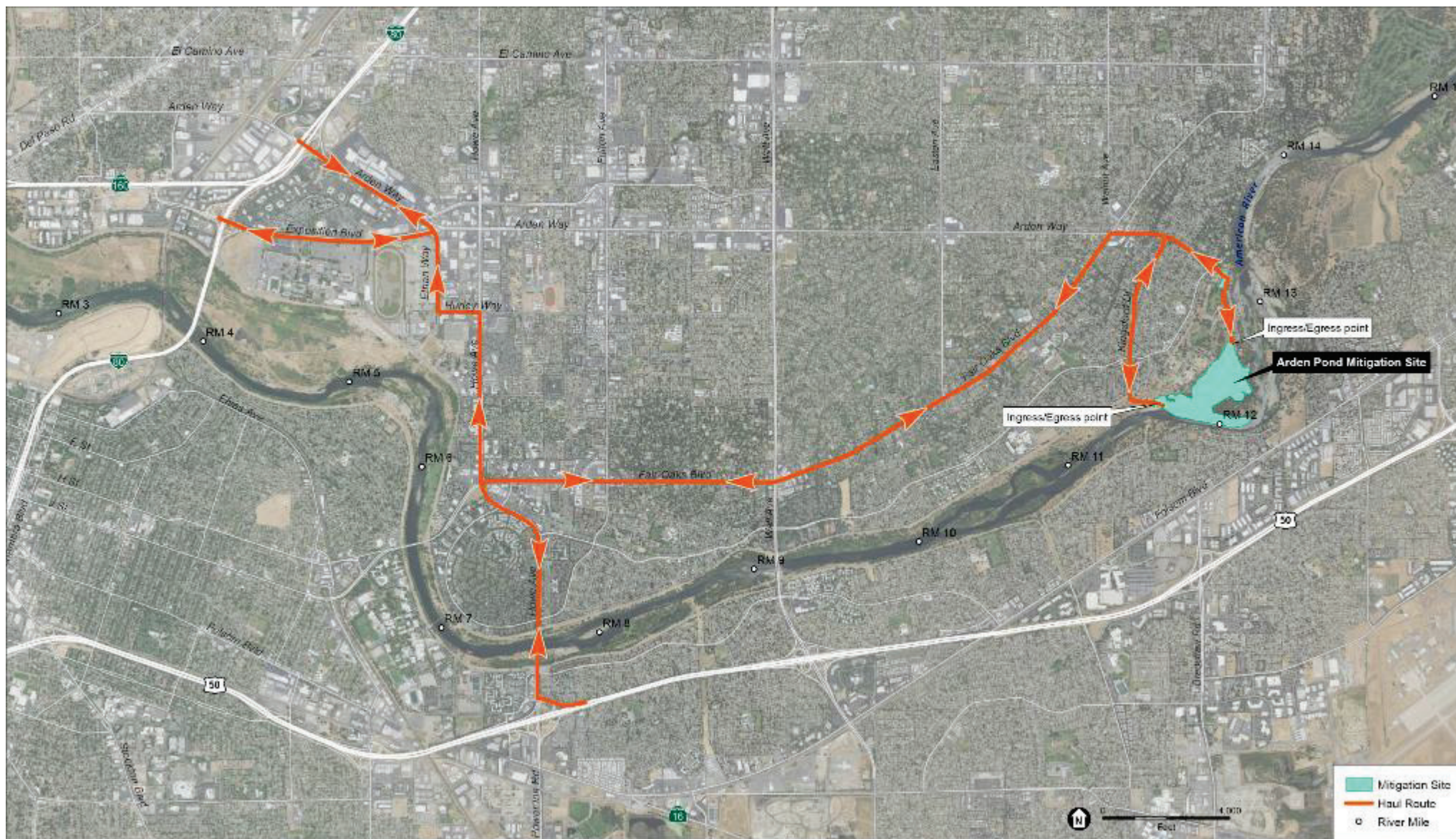
HAUL ROUTES



Access from Hwy 50 and 80



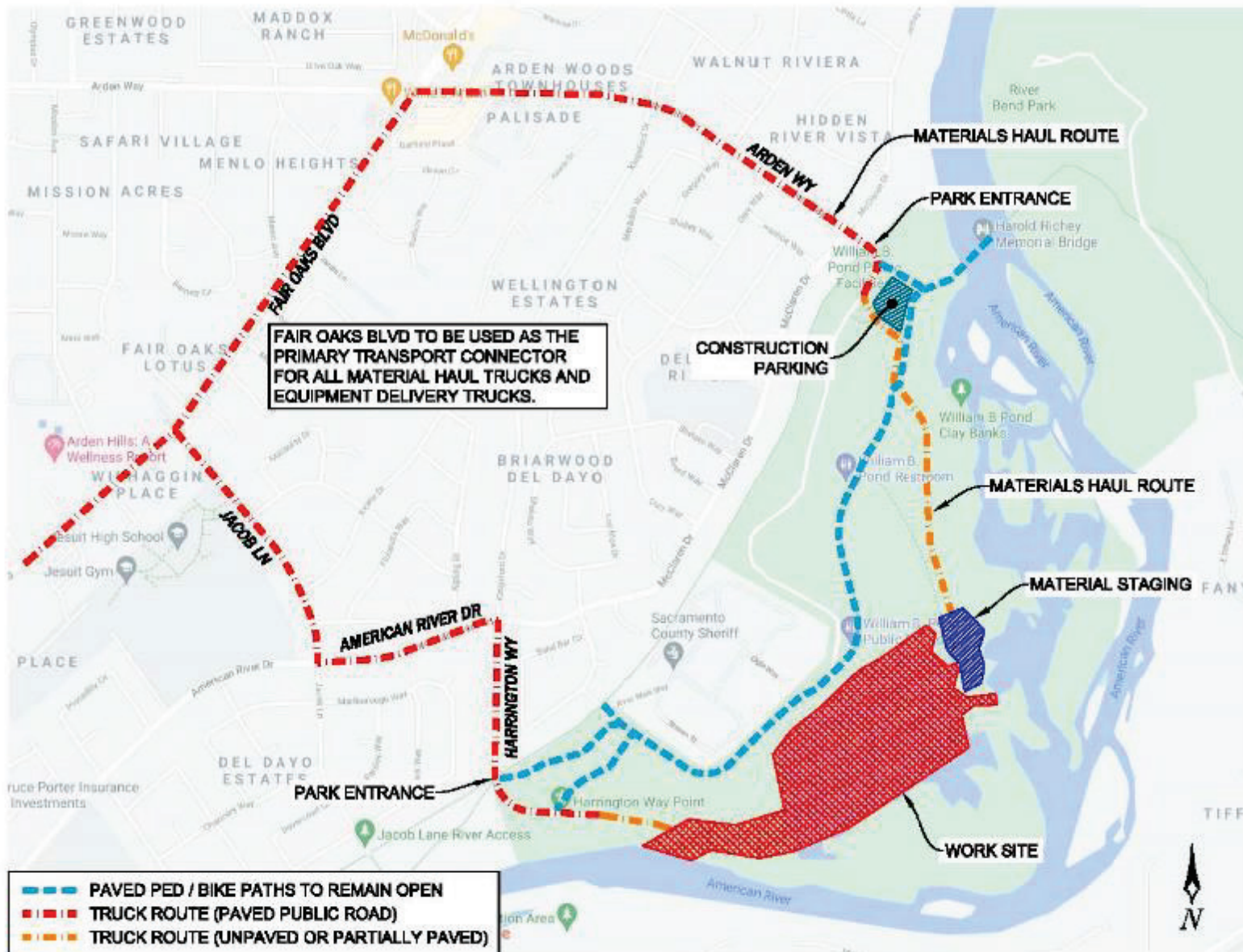
HAUL ROUTES



Access from Hwy 50 and 80 to and from Arden Pond and Site 2-3



HAUL ROUTES AT ARDEN POND





MITIGATION MEASURES



Detour Routes



Turbidity Curtains



Anchored Trees for Fish



Elderberry Shrub Transplant



ENVIRONMENTAL COMMITMENTS AND CONSISTENCY

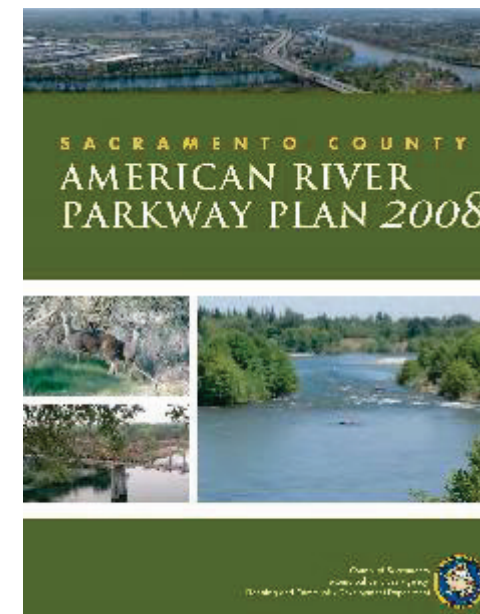


Environmental Commitments

- Final Supplemental EIS/EIR
- Biological Opinions (NMFS, USFWS)
- Water Quality Certification (State Water Board)

Consistency

- American River Parkway Plan
- Wild and Scenic Rivers Act





ANTICIPATED CONSTRUCTION SCHEDULE

Pre-construction (November 2021 - February 2022)

- Site prep, elderberry shrub transplant, cut and trim trees

Site Construction (Late Spring 2022 - Fall 2022)

- Install erosion protection and backfill for revegetation, construction at mitigation sites

Post-Construction Planting (Spring 2023 – Fall 2023)

- Install mixture of native vegetation on-site and within mitigation sites
- Vegetation Establishment (Next 3 to 5 years)

Reconstruction at Campus Commons Golf Course (Late Spring 2023 - Fall 2023)

- Recontour and reconstruct golf course with new course design, install new vegetation



NEPA/CEQA NEXT STEPS



Draft Supplemental EIS/EIR is available at:
sacleveeupgrades.com

Public Comment Period: June 4 – July 19, 2021

Anticipated Final Document: Fall 2021



CLOSURES AND NOTICES



Stay Informed about Temporary Road and Trail Closures:


- Subscribe to construction and traffic email updates at: sacleveeupgrades.com



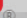
Source: Sacramento County Regional Parks




FOR MORE INFORMATION...



[About](#) [Business With Us](#) [Missions](#) [Locations](#) [Careers](#) [Media](#) [Library](#) [Contact](#) [Coronavirus](#)


US Army Corps of Engineers Sacramento District Website Website



Project Overview

Reducing flood risk in Sacramento


Greater Sacramento, California, is often considered to be the most at-risk region in America for catastrophic flooding, relying on an aging system of levees, weirs and bypasses and Folsom Dam to reduce its flood risk. But that system, just like a chain, is only as strong as its weakest link. Together, the U.S. Army Corps of Engineers, California's Central Valley Flood Protection Board, California Department of Water Resources, and the Sacramento Area Flood Control Agency have made tremendous progress in reducing the flood risk, but more work remains. Through the Bipartisan Budget Act, the Corps has received full upfront funding to modernize Sacramento's aging flood infrastructure. This allows us to more efficiently implement nearly \$1.8 billion in upgrades to Sacramento's flood risk management system. The authorized work includes up to: 13 miles of seepage cutoff walls, 21 miles of bank protection, 5 miles of levee stabilization, 5 miles of levee raises and widening the Sacramento Weir and bypass.

American River Levees

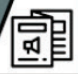
Sacramento River Levees

Sacramento Weir

Subscribe for Construction & Traffic email updates



Project Information Tri-fold



Current Project Activities

Sacramento River East Levee Contract 1 Construction

sacleveeupgrades.com



HOW TO PROVIDE COMMENTS

1. Notify us via Webex during this meeting that you would like to make comments at the end of this presentation. **Comments will be recorded and transcribed by a court reporter. Commenters are limited to one comment period of 2 minutes.**
2. In writing to the following addresses:

Flood Projects Office
Department of Water Resources
3464 El Camino Avenue Room 150
Sacramento, CA 95821

OR

Public Affairs Office
U.S. Army Corps of Engineers
1325 J Street Room 1513
Sacramento, CA 95814

Email:

PublicCommentARCF16@water.ca.gov

Email:

spk-pao@usace.army.mil

use “American River Contract 2” in subject line

There will be no answers to comments at this meeting. Responses to comments will be provided in the Final Supplemental EIS/EIR for comments received here and in writing.