

Project Overview

The American River Common Features 2016 Project is a \$1.8 billion cooperative effort between the U.S. Army Corps of Engineers, Central Valley Flood Protection Board, California Department of Water Resources, and the Sacramento Area Flood Control Agency (SAFCA).

This project serves as one piece of the larger plan to help the Sacramento region achieve a 200-year level of protection, meaning a one-in-200 chance of flooding in any given year.

Full upfront funding for our project, provided through the Bipartisan Budget Act of 2018, provided the unprecedented opportunity to proactively address limitations of the existing flood risk management system and, as a result, lower the flood risk for millions of people who live, work and play in the Sacramento region.

The ARCF 2016 project is to reduce the risk of flooding on the Lower American River and the eastside of the Sacramento River by addressing seepage, stability, overtopping, and erosion risks. Generally, the authorized project's features includes up to:

- 13 Miles of Cutoff Walls
- 21 Miles of Bank Protection
 - 11 miles on the American River
 - 10 miles on the Sacramento River
- 5 Miles of Levee Stabilization
- 5 Miles of Levee Raises
- Widen Sacramento Weir and Bypass by approximately 1,500 feet

Project Partners



Central Valley Flood Protection Board
California Dept. of Water Resources
Sacramento Area Flood Control Agency



Contact

**U.S. Army Corps of Engineers
Sacramento District**

(916) 557-5100

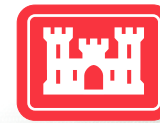
spk-pao@usace.army.mil

For More Information

Project Webpage
www.sacleveeupgrades.com

Sacramento District Homepage
www.spk.usace.army.mil

U.S. Army Corps of Engineers Homepage
www.usace.army.mil



**US Army Corps
of Engineers®**



BUILDING STRONG®

SACRAMENTO LEVEE UPGRADES

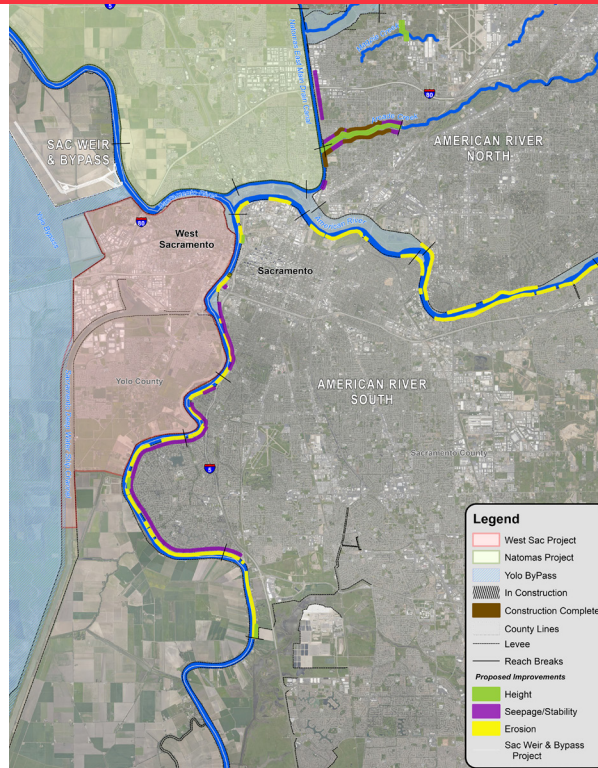
Reducing Sacramento's Flood Risk

The American River Watershed Common Features (ARCF) project was authorized by Congress in 2014, funded fully in 2018, and work is underway.

This work includes levee improvements to address seepage, stability, and overtopping concerns identified for the Sacramento River, erosion concerns on the American and Sacramento River levees, and widening of the Sacramento Weir and Bypass. Several mitigation actions are connected to this work, such as plantings and habitat improvements.

Seepage and stability improvements are typically addressed by the installation of a cutoff wall, seepage berm, or relief wells. Levee improvements to address overtopping could include floodwalls, levee raises, and a detention basin. Levee improvements to address erosion are typically bank stabilization measures using rocks on the water side of the levee.

More information about this ongoing flood risk reduction work, and all associated documents, can be found at www.sacleveeupgrades.com. Here you can also sign up to receive monthly construction update emails, or find out how to reach out to our team for more information. To learn about other projects in the region, visit www.spk.usace.army.mil/Missions/Civil-Works/



What Work is Already Complete?

In 2019, SAFCA completed construction to address the seepage and stability concerns along Arcade Creek's north and south levees, as well as the Natomas East Main Drainage Canal (NEMDC) east levee to address identified levee seepage and embankment and foundation stability problems.

2019: Four miles of levee improvements to address seepage, stability, and erosion concerns in south Natomas.

2020: 400-foot-long seepage berm to address seepage and stability concerns just south of Old Sacramento.

Wrapping Up: Three miles of levee improvements on the east side of the Sacramento River from Sutterville Rd to just north of Freeport to address seepage and stability concerns.

What's Coming Up?

Construction is expected to occur for the next several years. While construction will occur year-round in some locations, our construction season typically starts each year by April 15 and continues through October. Design work and environmental analysis will occur during months that construction work is dormant.

Levee improvements are anticipated to be broken into multiple construction packages. In 2021, we'll be completing seepage/stability work that requires installation of seepage cutoff walls at multiple locations along the Sacramento River East Levee, and construction along an approximately 1,150-foot-long section of the levee directly south of the Westin hotel (River Mile 55.2L) is scheduled to address erosion issues.

Other future flood risk reduction work:
Sacramento River: Levee improvements to address seepage, stability, overtopping and erosion continuing through 2024.

American River: Levee improvements to address erosion to occur from 2021-2025.

Sacramento Weir and Bypass Widening: Approximately doubling the size of the Sacramento weir and bypass to occur 2020-2025.

We intend to keep the lines of communication open through public meetings, newsletters and other correspondence, media interviews, industry days, and posting the latest information on our website www.sacleveeupgrades.com.

