



# American River Common Features 2016 Sacramento River Levees Monthly Update

MAR 2024

## Highlights (last 30 days)

**Sacramento River Erosion (SRE):** Contract 2 Season 2 and Contract 4 are on track for 2024 construction! Within the next couple of months, an informational pre-construction meeting will be scheduled to address engineering details, environmental and construction impacts and what the Corps and its non-federal partners are doing to mitigate said impacts (similar to pre-construction meetings held last year in preparation for Contract 2 Season 1 and SREL C4).

**Sacramento River East Levee (SREL):** Contract 3 is complete. Contract 4 is over 85% complete and will continue into 2024 due to delays with Jet Grout work at Westin Hotel.

## Looking Ahead (next 30+ days)

### What can I expect?

#### SRE Sacramento River Erosion

Tree cutting in preparation for Contract 2 Season 2 (no tree clearing is necessary to prepare for Contract 4). Approximately 55% of the Contract 2 clearing was completed by February 15th, and the remainder will be done when weather and river conditions permit safe clearing. The public should expect to see a bird monitor and possibly an archeological monitor observing the tree-clearing to ensure nesting birds are spared and artifacts are properly preserved on any portion of cultural significance.

#### SREL Seepage, Stability, and Overtopping

Jet Grout work is complete at Garcia Bend Park and Sump 132. Garcia Bend Park will remain unavailable for public use through April 2024 because of restoration of parking lot. Jet Grouting at Westin Hotel will continue through June 2024.

Hours of Operation: Mon – Sat from 7am-7pm.

#### Garcia Bend Park Staging

- ◆ Boat ramp closed during construction at the City's request with intermittent vehicle traffic during construction.
- ◆ Garcia Bend Park will have light traffic in and out until the end of the year.

#### Westin

- ◆ Work on levee cutoff wall will continue through June 2024 due to delays in construction.
- ◆ Sump 41 pump station construction is complete.

## Question of the Month

### *Why is tree clearing required for erosion protection and bank stabilization work?*

It is required for several reasons. Safety, environmental considerations, erosion control measures and bank protection drive the need to clear trees prior to this kind of construction. For example, trees in or near construction sites can pose significant safety hazards to workers and equipment. Falling branches or trees can cause serious injury, death, damage to equipment and disruption to the construction process. Removing trees before the work reduces these risks. Also, while there may be some environmental impact, the trees and their roots may exacerbate erosive forces or impede the effectiveness of erosion control measures.

### Information Resources:

#### Project Webpage:

[www.sacleveeupgrades.com](http://www.sacleveeupgrades.com)



#### Sacramento District Homepage:

[www.spk.usace.army.mil](http://www.spk.usace.army.mil)

#### Contact Information:

For questions or concerns, please contact our Public Affairs Office at  
916-557-5100  
[spk-pao@usace.army.mil](mailto:spk-pao@usace.army.mil)

## Upcoming Milestones

### Seepage/Stability/ Overtopping

#### SREL Contract 4

Construction  
April 2023 - June 2024

### Erosion

#### Contract 2

Construction  
July 2023—October 2024

#### Contract 3

Construction Contract Award  
Anticipated January/February  
2025

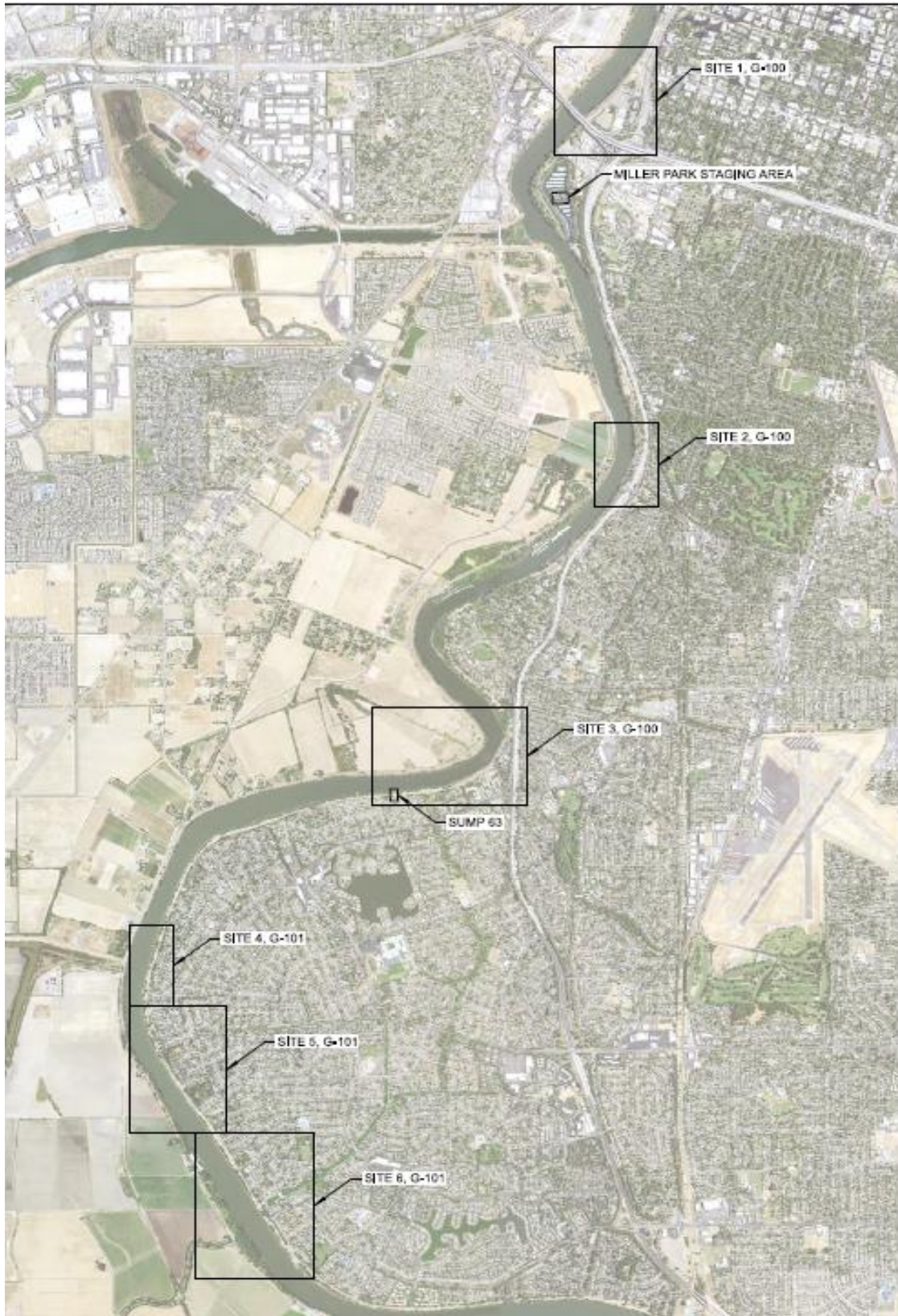
#### Contract 4

Construction  
July 2024—October 2024

Additional information can be found on  
our project web page at  
[www.sacleveeupgrades.com](http://www.sacleveeupgrades.com)

\*All Dates Subject to Change

# Erosion Contract 2 Construction Map



# Erosion C4 Construction Map

